



Crestone Peak Resources

Well Name:

REGNIER FARMS 1D-19H-B268

Project Name:

Sec 19 T2N-R68W

Pad Name:

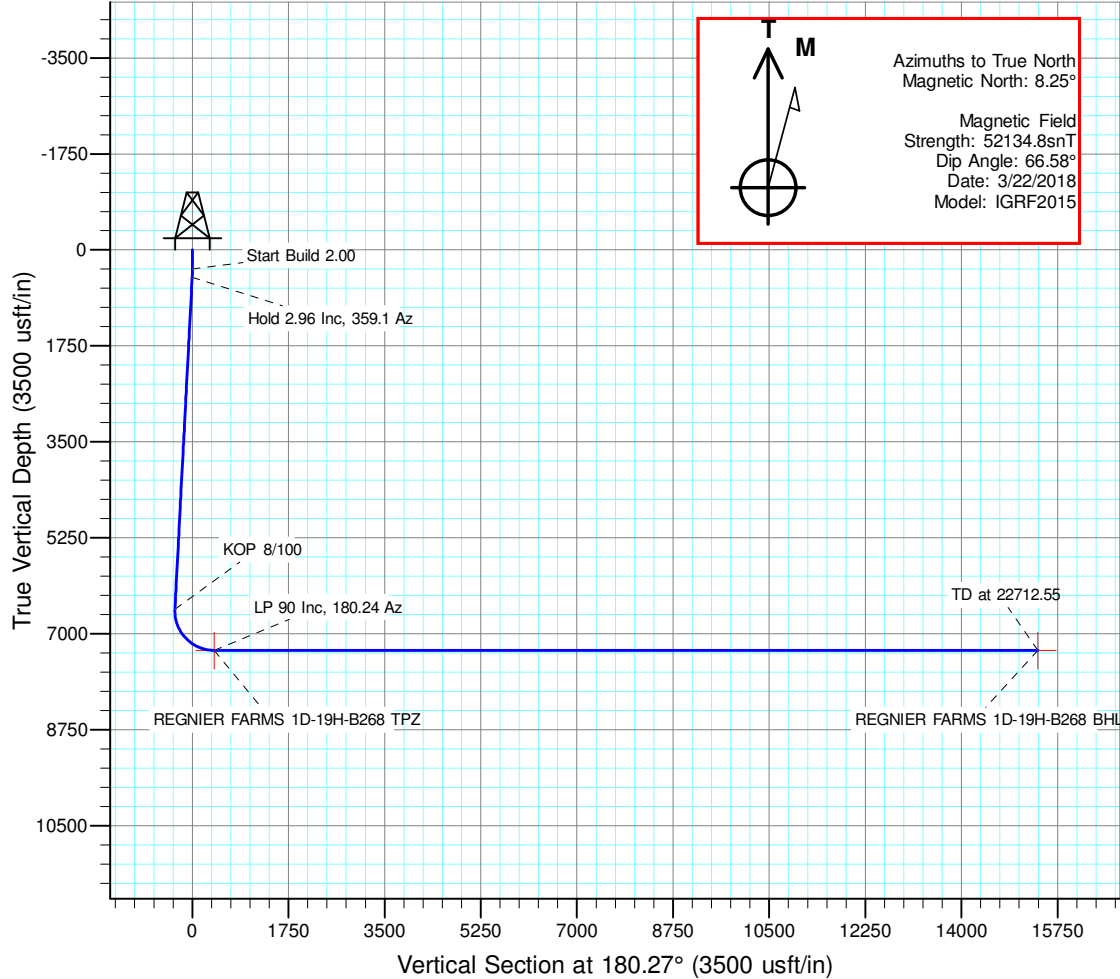
Regnier Farms Pad

ANNOTATIONS

MD	Inc	Azi	TVD	+N/-S	+E/-W	VSect	Departure	Annotation
350.00	0.00	0.00	350.00	0.00	0.00	0.00	0.00	Start Build 2.00
498.04	2.96	359.10	497.98	3.82	-0.06	-3.82	3.82	Hold 2.96 Inc, 359.1 Az
6558.97	2.96	359.10	6550.82	316.85	-4.95	-316.83	316.89	KOP 8/100
7720.98	90.00	180.24	7304.00	-398.38	-8.77	398.42	1034.26	LP 90 Inc, 180.24 Az
22711.55	90.00	180.24	7304.00	-15388.82	-72.62	15388.99	16024.83	TD at 22712.55

DESIGN TARGET DETAILS

Name	TVD	+N/-S	+E/-W	Northing	Easting	Latitude	Longitude	Shape
REGNIER FARMS 1D-19H-B268 BHL	7304.00	-15389.82	-72.62	1275579.125	3127733.815	40.088953	-105.043460	Point
REGNIER FARMS 1D-19H-B268 TPZ	7304.00	-398.38	-8.77	1290570.695	3127720.440	40.130107	-105.043232	Point

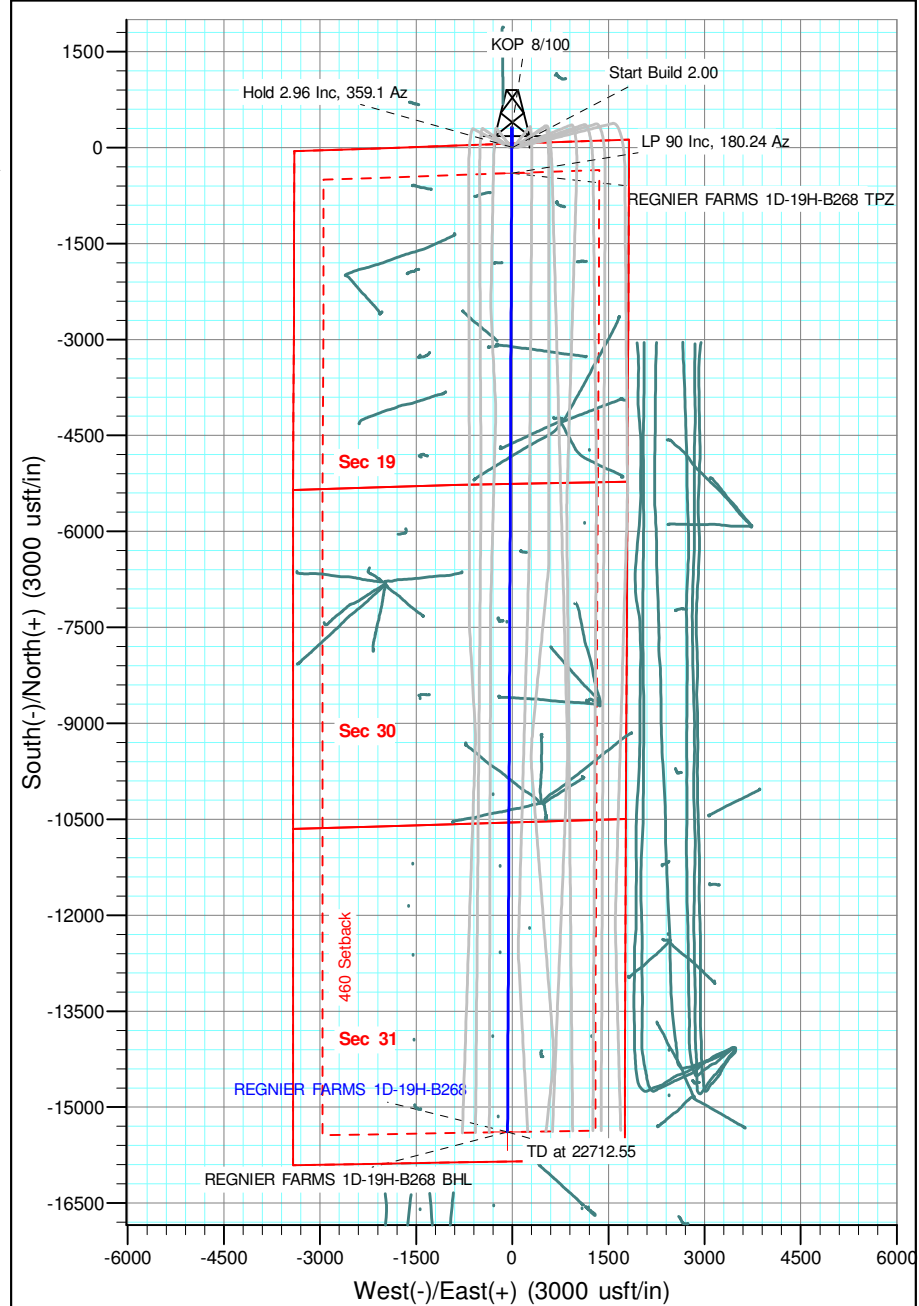


Geodetic Datum:

North American Datum 1983
US State Plane 1983, Colorado Northern Zone

Elevation:

Ground Elevation: 4966.00
KB Elevation: WELL @ 4989.00usft (Original Well Elev)





Crestone Peak Resources

Sec 19 T2N-R68W

Regnier Farms Pad

REGNIER FARMS 1D-19H-B268

Wellbore #1

Plan: Design #1 22Mar18 kjs

Standard Planning Report - Geographic

03 April, 2018

Database:	EDM 5000.14 Single User Db	Local Co-ordinate Reference:	Well REGNIER FARMS 1D-19H-B268
Company:	Crestone Peak Resources	TVD Reference:	WELL @ 4989.00usft (Original Well Elev)
Project:	Sec 19 T2N-R68W	MD Reference:	WELL @ 4989.00usft (Original Well Elev)
Site:	Regnier Farms Pad	North Reference:	True
Well:	REGNIER FARMS 1D-19H-B268	Survey Calculation Method:	Minimum Curvature
Wellbore:	Wellbore #1		
Design:	Design #1 22Mar18 kjs		

Project	Sec 19 T2N-R68W, Weld County, CO		
Map System:	US State Plane 1983	System Datum:	Mean Sea Level
Geo Datum:	North American Datum 1983		
Map Zone:	Colorado Northern Zone		

Site		Regnier Farms Pad			
Site Position:		Northing:	1,290,967.816 usft	Latitude:	40.131198
From:	Map	Easting:	3,127,697.187 usft	Longitude:	-105.043308
Position Uncertainty:	0.00 usft	Slot Radius:	13-3/16 "	Grid Convergence:	0.30 °

Well	REGNIER FARMS 1D-19H-B268					
Well Position	+N/-S	0.00 usft	Northing:	1,290,969.114 usft	Latitude:	40.131201
	+E/-W	0.00 usft	Easting:	3,127,727.159 usft	Longitude:	-105.043201
Position Uncertainty		0.00 usft	Wellhead Elevation:		Ground Level:	4,966.00 usft

Wellbore	Wellbore #1				
Magnetics	Model Name	Sample Date	Declination (°)	Dip Angle (°)	Field Strength (nT)
	IGRF2015	3/22/2018	8.25	66.58	52,134.84713678

Design	Design #1 22Mar18 kjs			
Audit Notes:				
Version:	Phase:	PLAN	Tie On Depth:	0.00
Vertical Section:	Depth From (TVD) (usft)	+N/-S (usft)	+E/-W (usft)	Direction (°)
	0.00	0.00	0.00	180.27

Plan Survey Tool Program	Date	4/2/2018		
Depth From (usft)	Depth To (usft)	Survey (Wellbore)	Tool Name	Remarks
1	0.00	22,712.36 Design #1 22Mar18 kjs (Wellbore)	MWD	
			OWSG MWD - Standard	

Plan Sections										
Measured Depth (usft)	Inclination (°)	Azimuth (°)	Vertical Depth (usft)	+N/-S (usft)	+E/-W (usft)	Dogleg Rate (°/100usft)	Build Rate (°/100usft)	Turn Rate (°/100usft)	TFO (°)	Target
0.00	0.00	0.00	0.00	0.00	0.00	0.00	0.00	0.00	0.00	
350.00	0.00	0.00	350.00	0.00	0.00	0.00	0.00	0.00	0.00	
498.04	2.96	359.10	497.98	3.82	-0.06	2.00	2.00	0.00	359.10	
6,558.97	2.96	359.10	6,550.82	316.85	-4.95	0.00	0.00	0.00	0.00	
7,720.98	90.00	180.24	7,304.00	-398.38	-8.77	8.00	7.49	-15.39	-178.86	REGNIER FARMS 1C
22,712.55	90.00	180.24	7,304.00	-15,389.82	-72.62	0.00	0.00	0.00	0.00	REGNIER FARMS 1C

Database:	EDM 5000.14 Single User Db	Local Co-ordinate Reference:	Well REGNIER FARMS 1D-19H-B268
Company:	Crestone Peak Resources	TVD Reference:	WELL @ 4989.00usft (Original Well Elev)
Project:	Sec 19 T2N-R68W	MD Reference:	WELL @ 4989.00usft (Original Well Elev)
Site:	Regnier Farms Pad	North Reference:	True
Well:	REGNIER FARMS 1D-19H-B268	Survey Calculation Method:	Minimum Curvature
Wellbore:	Wellbore #1		
Design:	Design #1 22Mar18 kjs		

Planned Survey									
Measured Depth (usft)	Inclination (°)	Azimuth (°)	Vertical Depth (usft)	+N/-S (usft)	+E/-W (usft)	Map Northing (usft)	Map Easting (usft)	Latitude	Longitude
0.00	0.00	0.00	0.00	0.00	0.00	1,290,969.114	3,127,727.159	40.131201	-105.043201
200.00	0.00	0.00	200.00	0.00	0.00	1,290,969.114	3,127,727.159	40.131201	-105.043201
350.00	0.00	0.00	350.00	0.00	0.00	1,290,969.114	3,127,727.159	40.131201	-105.043201
Start Build 2.00									
400.00	1.00	359.10	400.00	0.44	-0.01	1,290,969.550	3,127,727.150	40.131202	-105.043201
498.04	2.96	359.10	497.98	3.82	-0.06	1,290,972.937	3,127,727.080	40.131211	-105.043201
Hold 2.96 Inc, 359.1 Az									
600.00	2.96	359.10	599.80	9.09	-0.14	1,290,978.202	3,127,726.971	40.131226	-105.043202
800.00	2.96	359.10	799.53	19.42	-0.30	1,290,988.531	3,127,726.756	40.131254	-105.043202
1,000.00	2.96	359.10	999.26	29.75	-0.46	1,290,998.859	3,127,726.541	40.131282	-105.043203
1,200.00	2.96	359.10	1,199.00	40.08	-0.63	1,291,009.188	3,127,726.327	40.131311	-105.043203
1,400.00	2.96	359.10	1,398.73	50.41	-0.79	1,291,019.516	3,127,726.112	40.131339	-105.043204
1,600.00	2.96	359.10	1,598.46	60.74	-0.95	1,291,029.845	3,127,725.898	40.131367	-105.043204
1,800.00	2.96	359.10	1,798.20	71.07	-1.11	1,291,040.173	3,127,725.683	40.131396	-105.043205
2,000.00	2.96	359.10	1,997.93	81.40	-1.27	1,291,050.501	3,127,725.468	40.131424	-105.043206
2,200.00	2.96	359.10	2,197.66	91.72	-1.43	1,291,060.830	3,127,725.254	40.131452	-105.043206
2,400.00	2.96	359.10	2,397.40	102.05	-1.59	1,291,071.158	3,127,725.039	40.131481	-105.043207
2,600.00	2.96	359.10	2,597.13	112.38	-1.76	1,291,081.487	3,127,724.825	40.131509	-105.043207
2,800.00	2.96	359.10	2,796.86	122.71	-1.92	1,291,091.815	3,127,724.610	40.131538	-105.043208
3,000.00	2.96	359.10	2,996.59	133.04	-2.08	1,291,102.144	3,127,724.395	40.131566	-105.043209
3,200.00	2.96	359.10	3,196.33	143.37	-2.24	1,291,112.472	3,127,724.181	40.131594	-105.043209
3,400.00	2.96	359.10	3,396.06	153.70	-2.40	1,291,122.800	3,127,723.966	40.131623	-105.043210
3,600.00	2.96	359.10	3,595.79	164.03	-2.56	1,291,133.129	3,127,723.752	40.131651	-105.043210
3,800.00	2.96	359.10	3,795.53	174.36	-2.72	1,291,143.457	3,127,723.537	40.131679	-105.043211
4,000.00	2.96	359.10	3,995.26	184.69	-2.89	1,291,153.786	3,127,723.323	40.131708	-105.043211
4,200.00	2.96	359.10	4,194.99	195.02	-3.05	1,291,164.114	3,127,723.108	40.131736	-105.043212
4,400.00	2.96	359.10	4,394.73	205.35	-3.21	1,291,174.443	3,127,722.893	40.131764	-105.043213
4,600.00	2.96	359.10	4,594.46	215.68	-3.37	1,291,184.771	3,127,722.679	40.131793	-105.043213
4,800.00	2.96	359.10	4,794.19	226.01	-3.53	1,291,195.099	3,127,722.464	40.131821	-105.043214
5,000.00	2.96	359.10	4,993.92	236.34	-3.69	1,291,205.428	3,127,722.250	40.131849	-105.043214
5,200.00	2.96	359.10	5,193.66	246.67	-3.85	1,291,215.756	3,127,722.035	40.131878	-105.043215
5,400.00	2.96	359.10	5,393.39	257.00	-4.02	1,291,226.085	3,127,721.820	40.131906	-105.043215
5,600.00	2.96	359.10	5,593.12	267.32	-4.18	1,291,236.413	3,127,721.606	40.131935	-105.043216
5,800.00	2.96	359.10	5,792.86	277.65	-4.34	1,291,246.742	3,127,721.391	40.131963	-105.043217
6,000.00	2.96	359.10	5,992.59	287.98	-4.50	1,291,257.070	3,127,721.177	40.131991	-105.043217
6,200.00	2.96	359.10	6,192.32	298.31	-4.66	1,291,267.398	3,127,720.962	40.132020	-105.043218
6,400.00	2.96	359.10	6,392.06	308.64	-4.82	1,291,277.727	3,127,720.747	40.132048	-105.043218
6,558.97	2.96	359.10	6,550.82	316.85	-4.95	1,291,285.937	3,127,720.577	40.132070	-105.043219
KOP 8/100									
6,600.00	0.33	190.62	6,591.83	317.80	-4.99	1,291,286.881	3,127,720.534	40.132073	-105.043219
6,800.00	16.32	180.45	6,789.08	288.95	-5.31	1,291,258.028	3,127,720.357	40.131994	-105.043220
7,000.00	32.32	180.34	6,970.74	206.84	-5.85	1,291,175.923	3,127,720.243	40.131768	-105.043222
7,200.00	48.32	180.30	7,122.73	77.85	-6.56	1,291,046.927	3,127,720.202	40.131414	-105.043225
7,400.00	64.32	180.27	7,233.27	-88.04	-7.38	1,290,881.034	3,127,720.236	40.130959	-105.043227
7,600.00	80.32	180.25	7,293.81	-277.98	-8.25	1,290,691.097	3,127,720.344	40.130438	-105.043231
7,720.98	90.00	180.24	7,304.00	-398.38	-8.77	1,290,570.695	3,127,720.440	40.130107	-105.043232
LP 90 Inc, 180.24 Az									
7,800.00	90.00	180.24	7,304.00	-477.40	-9.11	1,290,491.671	3,127,720.511	40.129890	-105.043234
8,000.00	90.00	180.24	7,304.00	-677.40	-9.96	1,290,291.671	3,127,720.689	40.129341	-105.043237
8,200.00	90.00	180.24	7,304.00	-877.40	-10.81	1,290,091.671	3,127,720.868	40.128792	-105.043240
8,400.00	90.00	180.24	7,304.00	-1,077.40	-11.66	1,289,891.671	3,127,721.046	40.128243	-105.043243
8,600.00	90.00	180.24	7,304.00	-1,277.39	-12.52	1,289,691.672	3,127,721.225	40.127694	-105.043246
8,800.00	90.00	180.24	7,304.00	-1,477.39	-13.37	1,289,491.672	3,127,721.403	40.127145	-105.043249
9,000.00	90.00	180.24	7,304.00	-1,677.39	-14.22	1,289,291.672	3,127,721.582	40.126596	-105.043252

Database:	EDM 5000.14 Single User Db	Local Co-ordinate Reference:	Well REGNIER FARMS 1D-19H-B268
Company:	Crestone Peak Resources	TVD Reference:	WELL @ 4989.00usft (Original Well Elev)
Project:	Sec 19 T2N-R68W	MD Reference:	WELL @ 4989.00usft (Original Well Elev)
Site:	Regnier Farms Pad	North Reference:	True
Well:	REGNIER FARMS 1D-19H-B268	Survey Calculation Method:	Minimum Curvature
Wellbore:	Wellbore #1		
Design:	Design #1 22Mar18 kjs		

Planned Survey										
Measured Depth (usft)	Inclination (°)	Azimuth (°)	Vertical Depth (usft)	+N/-S (usft)	+E/-W (usft)	Map Northing (usft)	Map Easting (usft)	Latitude	Longitude	
9,200.00	90.00	180.24	7,304.00	-1,877.39	-15.07	1,289,091.672	3,127,721.760	40.126047	-105.043255	
9,400.00	90.00	180.24	7,304.00	-2,077.39	-15.92	1,288,891.672	3,127,721.938	40.125498	-105.043258	
9,600.00	90.00	180.24	7,304.00	-2,277.39	-16.77	1,288,691.672	3,127,722.117	40.124949	-105.043261	
9,800.00	90.00	180.24	7,304.00	-2,477.38	-17.63	1,288,491.672	3,127,722.295	40.124400	-105.043264	
10,000.00	90.00	180.24	7,304.00	-2,677.38	-18.48	1,288,291.672	3,127,722.474	40.123851	-105.043267	
10,200.00	90.00	180.24	7,304.00	-2,877.38	-19.33	1,288,091.672	3,127,722.652	40.123302	-105.043270	
10,400.00	90.00	180.24	7,304.00	-3,077.38	-20.18	1,287,891.672	3,127,722.831	40.122753	-105.043273	
10,600.00	90.00	180.24	7,304.00	-3,277.38	-21.03	1,287,691.672	3,127,723.009	40.122204	-105.043276	
10,800.00	90.00	180.24	7,304.00	-3,477.37	-21.89	1,287,491.672	3,127,723.187	40.121655	-105.043279	
11,000.00	90.00	180.24	7,304.00	-3,677.37	-22.74	1,287,291.673	3,127,723.366	40.121106	-105.043282	
11,200.00	90.00	180.24	7,304.00	-3,877.37	-23.59	1,287,091.673	3,127,723.544	40.120557	-105.043285	
11,400.00	90.00	180.24	7,304.00	-4,077.37	-24.44	1,286,891.673	3,127,723.723	40.120008	-105.043288	
11,600.00	90.00	180.24	7,304.00	-4,277.37	-25.29	1,286,691.673	3,127,723.901	40.119459	-105.043292	
11,800.00	90.00	180.24	7,304.00	-4,477.37	-26.14	1,286,491.673	3,127,724.080	40.118910	-105.043295	
12,000.00	90.00	180.24	7,304.00	-4,677.36	-27.00	1,286,291.673	3,127,724.258	40.118361	-105.043298	
12,200.00	90.00	180.24	7,304.00	-4,877.36	-27.85	1,286,091.673	3,127,724.436	40.117812	-105.043301	
12,400.00	90.00	180.24	7,304.00	-5,077.36	-28.70	1,285,891.673	3,127,724.615	40.117263	-105.043304	
12,600.00	90.00	180.24	7,304.00	-5,277.36	-29.55	1,285,691.673	3,127,724.793	40.116714	-105.043307	
12,800.00	90.00	180.24	7,304.00	-5,477.36	-30.40	1,285,491.673	3,127,724.972	40.116165	-105.043310	
13,000.00	90.00	180.24	7,304.00	-5,677.35	-31.26	1,285,291.673	3,127,725.150	40.115616	-105.043313	
13,200.00	90.00	180.24	7,304.00	-5,877.35	-32.11	1,285,091.674	3,127,725.329	40.115066	-105.043316	
13,400.00	90.00	180.24	7,304.00	-6,077.35	-32.96	1,284,891.674	3,127,725.507	40.114517	-105.043319	
13,600.00	90.00	180.24	7,304.00	-6,277.35	-33.81	1,284,691.674	3,127,725.686	40.113968	-105.043322	
13,800.00	90.00	180.24	7,304.00	-6,477.35	-34.66	1,284,491.674	3,127,725.864	40.113419	-105.043325	
14,000.00	90.00	180.24	7,304.00	-6,677.35	-35.52	1,284,291.674	3,127,726.042	40.112870	-105.043328	
14,200.00	90.00	180.24	7,304.00	-6,877.34	-36.37	1,284,091.674	3,127,726.221	40.112321	-105.043331	
14,400.00	90.00	180.24	7,304.00	-7,077.34	-37.22	1,283,891.674	3,127,726.399	40.111772	-105.043334	
14,600.00	90.00	180.24	7,304.00	-7,277.34	-38.07	1,283,691.674	3,127,726.578	40.111223	-105.043337	
14,800.00	90.00	180.24	7,304.00	-7,477.34	-38.92	1,283,491.674	3,127,726.756	40.110674	-105.043340	
15,000.00	90.00	180.24	7,304.00	-7,677.34	-39.77	1,283,291.674	3,127,726.935	40.110125	-105.043343	
15,200.00	90.00	180.24	7,304.00	-7,877.34	-40.63	1,283,091.674	3,127,727.113	40.109576	-105.043346	
15,400.00	90.00	180.24	7,304.00	-8,077.33	-41.48	1,282,891.675	3,127,727.291	40.109027	-105.043349	
15,600.00	90.00	180.24	7,304.00	-8,277.33	-42.33	1,282,691.675	3,127,727.470	40.108478	-105.043352	
15,800.00	90.00	180.24	7,304.00	-8,477.33	-43.18	1,282,491.675	3,127,727.648	40.107929	-105.043355	
16,000.00	90.00	180.24	7,304.00	-8,677.33	-44.03	1,282,291.675	3,127,727.827	40.107380	-105.043359	
16,200.00	90.00	180.24	7,304.00	-8,877.33	-44.89	1,282,091.675	3,127,728.005	40.106831	-105.043362	
16,400.00	90.00	180.24	7,304.00	-9,077.32	-45.74	1,281,891.675	3,127,728.184	40.106282	-105.043365	
16,600.00	90.00	180.24	7,304.00	-9,277.32	-46.59	1,281,691.675	3,127,728.362	40.105733	-105.043368	
16,800.00	90.00	180.24	7,304.00	-9,477.32	-47.44	1,281,491.675	3,127,728.540	40.105184	-105.043371	
17,000.00	90.00	180.24	7,304.00	-9,677.32	-48.29	1,281,291.675	3,127,728.719	40.104635	-105.043374	
17,200.00	90.00	180.24	7,304.00	-9,877.32	-49.14	1,281,091.675	3,127,728.897	40.104086	-105.043377	
17,400.00	90.00	180.24	7,304.00	-10,077.32	-50.00	1,280,891.675	3,127,729.076	40.103537	-105.043380	
17,600.00	90.00	180.24	7,304.00	-10,277.31	-50.85	1,280,691.676	3,127,729.254	40.102988	-105.043383	
17,800.00	90.00	180.24	7,304.00	-10,477.31	-51.70	1,280,491.676	3,127,729.433	40.102439	-105.043386	
18,000.00	90.00	180.24	7,304.00	-10,677.31	-52.55	1,280,291.676	3,127,729.611	40.101890	-105.043389	
18,200.00	90.00	180.24	7,304.00	-10,877.31	-53.40	1,280,091.676	3,127,729.789	40.101341	-105.043392	
18,400.00	90.00	180.24	7,304.00	-11,077.31	-54.26	1,279,891.676	3,127,729.968	40.100792	-105.043395	
18,600.00	90.00	180.24	7,304.00	-11,277.30	-55.11	1,279,691.676	3,127,730.146	40.100243	-105.043398	
18,800.00	90.00	180.24	7,304.00	-11,477.30	-55.96	1,279,491.676	3,127,730.325	40.099694	-105.043401	
19,000.00	90.00	180.24	7,304.00	-11,677.30	-56.81	1,279,291.676	3,127,730.503	40.099145	-105.043404	
19,200.00	90.00	180.24	7,304.00	-11,877.30	-57.66	1,279,091.676	3,127,730.682	40.098596	-105.043407	
19,400.00	90.00	180.24	7,304.00	-12,077.30	-58.51	1,278,891.676	3,127,730.860	40.098047	-105.043410	
19,600.00	90.00	180.24	7,304.00	-12,277.30	-59.37	1,278,691.676	3,127,731.039	40.097498	-105.043413	
19,800.00	90.00	180.24	7,304.00	-12,477.29	-60.22	1,278,491.677	3,127,731.217	40.096949	-105.043416	
20,000.00	90.00	180.24	7,304.00	-12,677.29	-61.07	1,278,291.677	3,127,731.395	40.096400	-105.043419	

Database:	EDM 5000.14 Single User Db	Local Co-ordinate Reference:	Well REGNIER FARMS 1D-19H-B268
Company:	Crestone Peak Resources	TVD Reference:	WELL @ 4989.00usft (Original Well Elev)
Project:	Sec 19 T2N-R68W	MD Reference:	WELL @ 4989.00usft (Original Well Elev)
Site:	Regnier Farms Pad	North Reference:	True
Well:	REGNIER FARMS 1D-19H-B268	Survey Calculation Method:	Minimum Curvature
Wellbore:	Wellbore #1		
Design:	Design #1 22Mar18 kjs		

Planned Survey										
Measured Depth (usft)	Inclination (°)	Azimuth (°)	Vertical Depth (usft)	+N/-S (usft)	+E/-W (usft)	Map Northing (usft)	Map Easting (usft)	Latitude	Longitude	
20,200.00	90.00	180.24	7,304.00	-12,877.29	-61.92	1,278,091.677	3,127,731.574	40.095851	-105.043422	
20,400.00	90.00	180.24	7,304.00	-13,077.29	-62.77	1,277,891.677	3,127,731.752	40.095302	-105.043425	
20,600.00	90.00	180.24	7,304.00	-13,277.29	-63.63	1,277,691.677	3,127,731.931	40.094753	-105.043429	
20,800.00	90.00	180.24	7,304.00	-13,477.28	-64.48	1,277,491.677	3,127,732.109	40.094203	-105.043432	
21,000.00	90.00	180.24	7,304.00	-13,677.28	-65.33	1,277,291.677	3,127,732.288	40.093654	-105.043435	
21,200.00	90.00	180.24	7,304.00	-13,877.28	-66.18	1,277,091.677	3,127,732.466	40.093105	-105.043438	
21,400.00	90.00	180.24	7,304.00	-14,077.28	-67.03	1,276,891.677	3,127,732.644	40.092556	-105.043441	
21,600.00	90.00	180.24	7,304.00	-14,277.28	-67.89	1,276,691.677	3,127,732.823	40.092007	-105.043444	
21,800.00	90.00	180.24	7,304.00	-14,477.28	-68.74	1,276,491.677	3,127,733.001	40.091458	-105.043447	
22,000.00	90.00	180.24	7,304.00	-14,677.27	-69.59	1,276,291.677	3,127,733.180	40.090909	-105.043450	
22,200.00	90.00	180.24	7,304.00	-14,877.27	-70.44	1,276,091.678	3,127,733.358	40.090360	-105.043453	
22,400.00	90.00	180.24	7,304.00	-15,077.27	-71.29	1,275,891.678	3,127,733.537	40.089811	-105.043456	
22,600.00	90.00	180.24	7,304.00	-15,277.27	-72.14	1,275,691.678	3,127,733.715	40.089262	-105.043459	
22,711.55	90.00	180.24	7,304.00	-15,388.82	-72.62	1,275,580.128	3,127,733.815	40.088956	-105.043461	
TD at 22712.55										
22,712.55	90.00	180.24	7,304.00	-15,389.82	-72.62	1,275,579.125	3,127,733.815	40.088953	-105.043461	

Design Targets										
Target Name - hit/miss target - Shape	Dip Angle (°)	Dip Dir. (°)	TVD (usft)	+N/-S (usft)	+E/-W (usft)	Northing (usft)	Easting (usft)	Latitude	Longitude	
REGNIER FARMS 1D-1 - plan hits target center - Point	0.00	0.00	7,304.00	-15,389.82	-72.62	1,275,579.125	3,127,733.815	40.088953	-105.043461	
REGNIER FARMS 1D-1 - plan hits target center - Point	0.00	0.00	7,304.00	-398.38	-8.77	1,290,570.695	3,127,720.440	40.130107	-105.043232	

Plan Annotations					
Measured Depth (usft)	Vertical Depth (usft)	Local Coordinates			
		+N/-S (usft)	+E/-W (usft)	Comment	
350.00	350.00	0.00	0.00	Start Build 2.00	
498.04	497.98	3.82	-0.06	Hold 2.96 Inc, 359.1 Az	
6,558.97	6,550.82	316.85	-4.95	KOP 8/100	
7,720.98	7,304.00	-398.38	-8.77	LP 90 Inc, 180.24 Az	
22,711.55	7,304.00	-15,388.82	-72.62	TD at 22712.55	