

Well Name:
REGNIER FARMS 1C-19H-B268

Project Name:
Sec 19 T2N-R68W

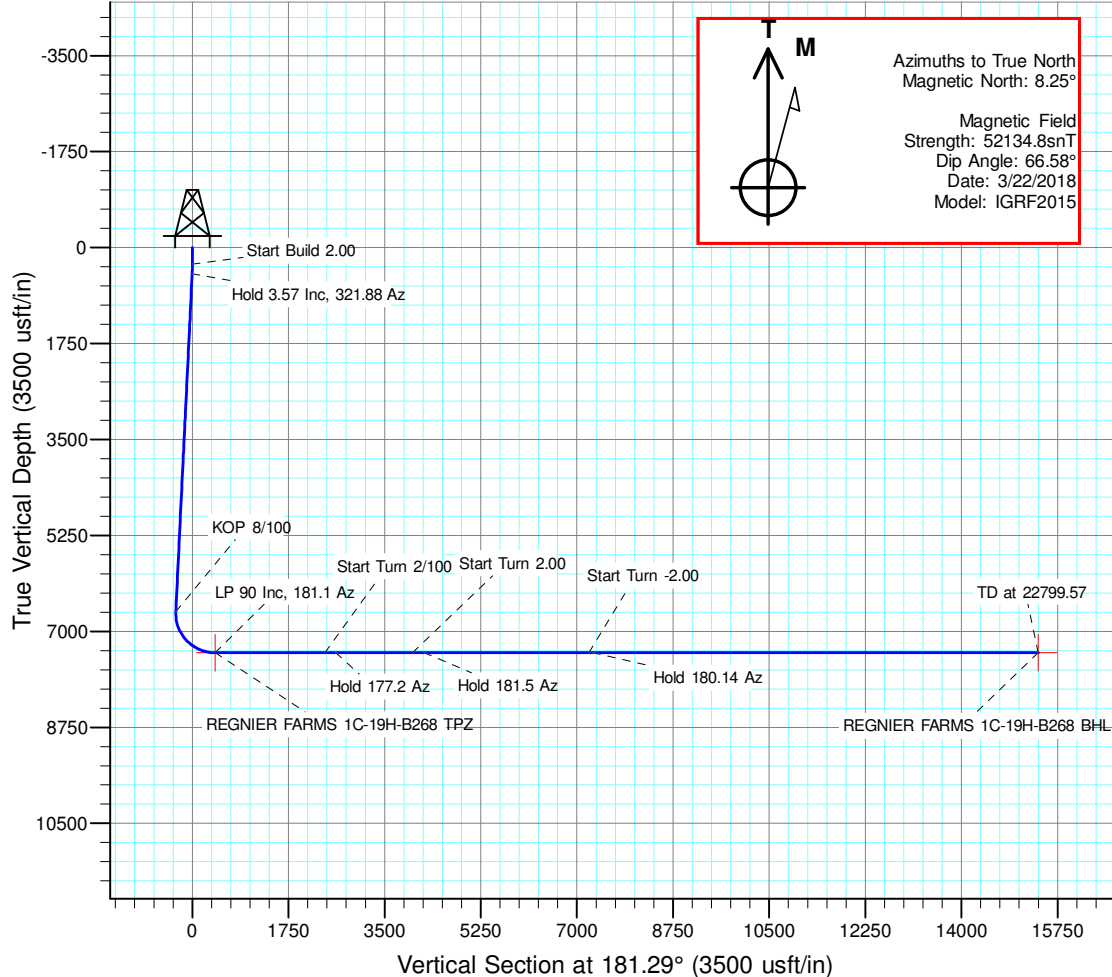
Pad Name:
Regnier Farms Pad

ANNOTATIONS

MD	Inc	Azi	TVD	+N/-S	+E/-W	Vsect	Departure	Annotation
300.00	0.00	0.00	300.00	0.00	0.00	0.00	0.00	Start Build 2.00
478.36	3.57	321.88	478.25	4.37	-3.43	-4.29	5.55	Hold 3.57 Inc, 321.88 Az
6650.94	3.57	321.88	6638.86	306.51	-240.53	-301.00	389.61	KOP 8/100
7810.47	90.00	181.10	7389.00	-408.16	-283.82	414.46	1110.26	LP 90 Inc, 181.1 Az
9810.47	90.00	181.10	7389.00	-2407.79	-322.22	2414.45	3110.26	Start Turn 2/100
10005.47	90.00	177.20	7389.00	-2602.73	-319.33	2609.28	3305.26	Hold 177.2 Az
11405.47	90.00	177.20	7389.00	-4001.06	-250.94	4005.71	4705.26	Start Turn 2.00
11620.47	90.00	181.50	7389.00	-4216.00	-248.50	4220.53	4920.26	Hold 181.5 Az
14620.47	90.00	181.50	7389.00	-7214.97	-327.03	7220.51	7920.26	Start Turn -2.00
14688.54	90.00	180.14	7389.00	-7283.03	-328.00	7288.57	7988.33	Hold 180.14 Az
22799.57	90.00	180.14	7389.00	-15394.03	-347.63	15397.95	16099.35	TD at 22799.57

DESIGN TARGET DETAILS

Name	TVD	+N/-S	+E/-W	Northing	Easting	Latitude	Longitude	Shape
REGNIER FARMS 1C-19H-B268 BHL	7389.00	-15394.03	-347.63	1275573.065	3127448.832	40.088941	-105.044479	Point
REGNIER FARMS 1C-19H-B268 TPZ	7389.00	-408.16	-283.82	1290559.065	3127435.450	40.130079	-105.044252	Point

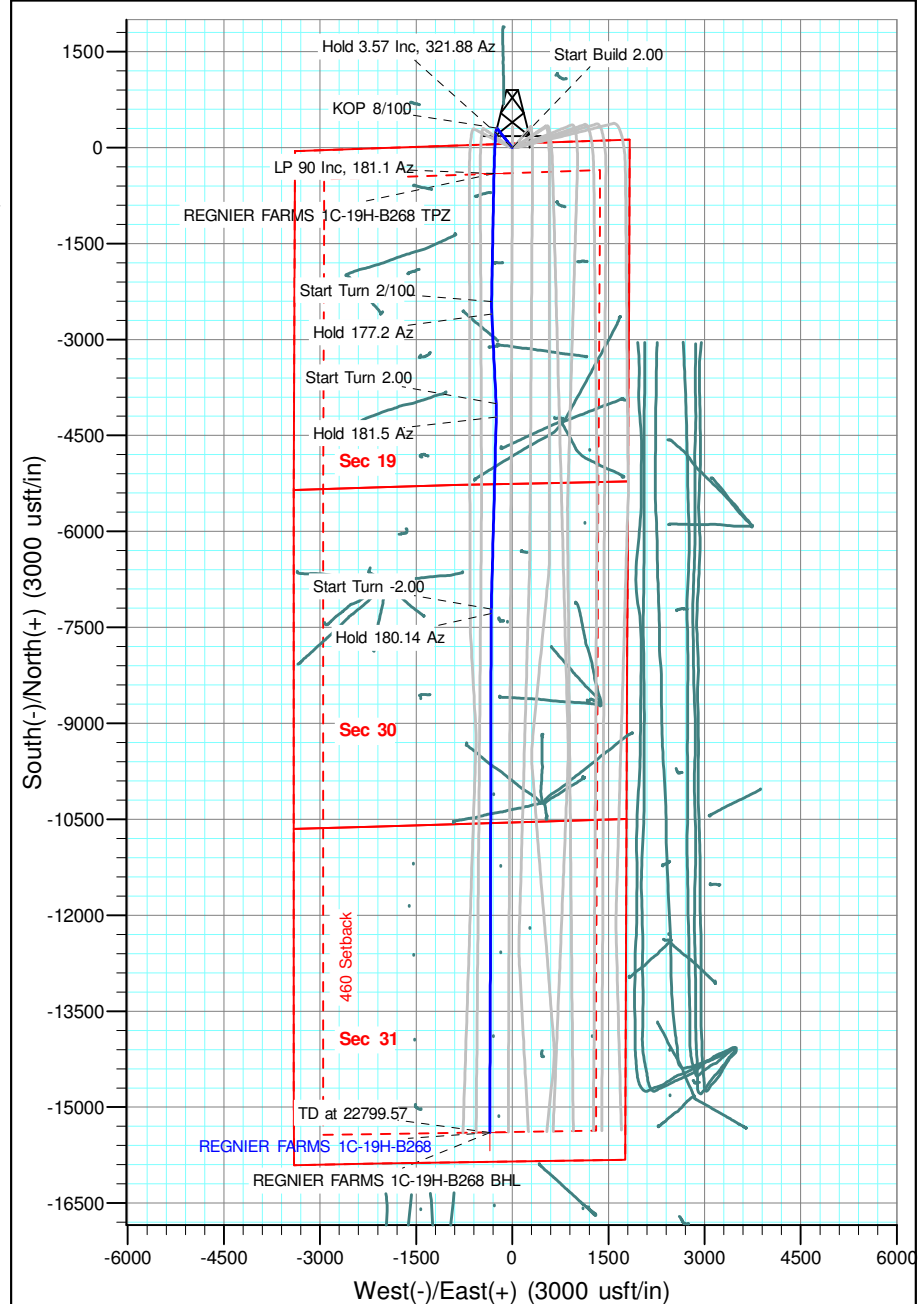


Geodetic Datum:

North American Datum 1983
US State Plane 1983, Colorado Northern Zone

Elevation:

Ground Elevation: 4966.00
KB Elevation: WELL @ 4989.00usft (Original Well Elev)





Crestone Peak Resources

Sec 19 T2N-R68W

Regnier Farms Pad

REGNIER FARMS 1C-19H-B268

Wellbore #1

Plan: Design #1 22Mar18 kjs

Standard Planning Report - Geographic

03 April, 2018

Database:	EDM 5000.14 Single User Db	Local Co-ordinate Reference:	Well REGNIER FARMS 1C-19H-B268
Company:	Crestone Peak Resources	TVD Reference:	WELL @ 4989.00usft (Original Well Elev)
Project:	Sec 19 T2N-R68W	MD Reference:	WELL @ 4989.00usft (Original Well Elev)
Site:	Regnier Farms Pad	North Reference:	True
Well:	REGNIER FARMS 1C-19H-B268	Survey Calculation Method:	Minimum Curvature
Wellbore:	Wellbore #1		
Design:	Design #1 22Mar18 kjs		

Project	Sec 19 T2N-R68W, Weld County, CO		
Map System:	US State Plane 1983	System Datum:	Mean Sea Level
Geo Datum:	North American Datum 1983		
Map Zone:	Colorado Northern Zone		

Site		Regnier Farms Pad			
Site Position:		Northing:	1,290,967.816 usft	Latitude:	40.131198
From:	Map	Easting:	3,127,697.187 usft	Longitude:	-105.043308
Position Uncertainty:	0.00 usft	Slot Radius:	13-3/16 "	Grid Convergence:	0.30 °

Well	REGNIER FARMS 1C-19H-B268					
Well Position	+N/-S	0.00 usft	Northing:	1,290,968.681 usft	Latitude:	40.131200
	+E/-W	0.00 usft	Easting:	3,127,717.168 usft	Longitude:	-105.043237
Position Uncertainty		0.00 usft	Wellhead Elevation:		Ground Level:	4,966.00 usft

Wellbore	Wellbore #1				
Magnetics	Model Name	Sample Date	Declination (°)	Dip Angle (°)	Field Strength (nT)
	IGRF2015	3/22/2018	8.25	66.58	52,134.84275709

Design	Design #1 22Mar18 kjs			
Audit Notes:				
Version:	Phase:	PLAN	Tie On Depth:	0.00
Vertical Section:	Depth From (TVD) (usft)	+N/-S (usft)	+E/-W (usft)	Direction (°)
	0.00	0.00	0.00	181.29

Plan Survey Tool Program	Date	4/3/2018		
Depth From (usft)	Depth To (usft)	Survey (Wellbore)	Tool Name	Remarks
1	0.00	22,799.57 Design #1 22Mar18 kjs (Wellbore)	MWD OWSG MWD - Standard	

Database:	EDM 5000.14 Single User Db	Local Co-ordinate Reference:	Well REGNIER FARMS 1C-19H-B268
Company:	Crestone Peak Resources	TVD Reference:	WELL @ 4989.00usft (Original Well Elev)
Project:	Sec 19 T2N-R68W	MD Reference:	WELL @ 4989.00usft (Original Well Elev)
Site:	Regnier Farms Pad	North Reference:	True
Well:	REGNIER FARMS 1C-19H-B268	Survey Calculation Method:	Minimum Curvature
Wellbore:	Wellbore #1		
Design:	Design #1 22Mar18 kjs		

Plan Sections										
Measured Depth (usft)	Inclination (°)	Azimuth (°)	Vertical Depth (usft)	+N/-S (usft)	+E/-W (usft)	Dogleg Rate (°/100usft)	Build Rate (°/100usft)	Turn Rate (°/100usft)	TFO (°)	Target
0.00	0.00	0.00	0.00	0.00	0.00	0.00	0.00	0.00	0.00	
300.00	0.00	0.00	300.00	0.00	0.00	0.00	0.00	0.00	0.00	
478.36	3.57	321.88	478.25	4.37	-3.43	2.00	2.00	0.00	321.88	
6,650.94	3.57	321.88	6,638.86	306.51	-240.53	0.00	0.00	0.00	0.00	
7,810.47	90.00	181.10	7,389.00	-408.16	-283.82	8.00	7.45	-12.14	-140.72	REGNIER FARMS 1C
9,810.47	90.00	181.10	7,389.00	-2,407.79	-322.22	0.00	0.00	0.00	0.00	
10,005.47	90.00	177.20	7,389.00	-2,602.73	-319.33	2.00	0.00	-2.00	-90.00	
11,405.47	90.00	177.20	7,389.00	-4,001.06	-250.94	0.00	0.00	0.00	0.00	
11,620.47	90.00	181.50	7,389.00	-4,216.00	-248.50	2.00	0.00	2.00	90.00	
14,620.47	90.00	181.50	7,389.00	-7,214.97	-327.03	0.00	0.00	0.00	0.00	
14,688.54	90.00	180.14	7,389.00	-7,283.03	-328.00	2.00	0.00	-2.00	-90.00	
22,799.57	90.00	180.14	7,389.00	-15,394.03	-347.63	0.00	0.00	0.00	0.00	REGNIER FARMS 1C

Database:	EDM 5000.14 Single User Db	Local Co-ordinate Reference:	Well REGNIER FARMS 1C-19H-B268
Company:	Crestone Peak Resources	TVD Reference:	WELL @ 4989.00usft (Original Well Elev)
Project:	Sec 19 T2N-R68W	MD Reference:	WELL @ 4989.00usft (Original Well Elev)
Site:	Regnier Farms Pad	North Reference:	True
Well:	REGNIER FARMS 1C-19H-B268	Survey Calculation Method:	Minimum Curvature
Wellbore:	Wellbore #1		
Design:	Design #1 22Mar18 kjs		

Planned Survey									
Measured Depth (usft)	Inclination (°)	Azimuth (°)	Vertical Depth (usft)	+N/-S (usft)	+E/-W (usft)	Map Northing (usft)	Map Easting (usft)	Latitude	Longitude
0.00	0.00	0.00	0.00	0.00	0.00	1,290,968.681	3,127,717.168	40.131200	-105.043237
200.00	0.00	0.00	200.00	0.00	0.00	1,290,968.681	3,127,717.168	40.131200	-105.043237
300.00	0.00	0.00	300.00	0.00	0.00	1,290,968.681	3,127,717.168	40.131200	-105.043237
Start Build 2.00									
400.00	2.00	321.88	399.98	1.37	-1.08	1,290,970.048	3,127,716.084	40.131203	-105.043241
478.36	3.57	321.88	478.25	4.37	-3.43	1,290,973.030	3,127,713.719	40.131212	-105.043249
Hold 3.57 Inc, 321.88 Az									
600.00	3.57	321.88	599.65	10.32	-8.10	1,290,978.959	3,127,709.016	40.131228	-105.043266
800.00	3.57	321.88	799.26	20.11	-15.78	1,290,988.710	3,127,701.284	40.131255	-105.043293
1,000.00	3.57	321.88	998.87	29.90	-23.46	1,290,998.460	3,127,693.551	40.131282	-105.043321
1,200.00	3.57	321.88	1,198.49	39.69	-31.15	1,291,008.210	3,127,685.818	40.131309	-105.043348
1,400.00	3.57	321.88	1,398.10	49.48	-38.83	1,291,017.960	3,127,678.086	40.131335	-105.043376
1,600.00	3.57	321.88	1,597.71	59.27	-46.51	1,291,027.710	3,127,670.353	40.131362	-105.043403
1,800.00	3.57	321.88	1,797.32	69.06	-54.19	1,291,037.460	3,127,662.620	40.131389	-105.043431
2,000.00	3.57	321.88	1,996.94	78.85	-61.88	1,291,047.210	3,127,654.888	40.131416	-105.043458
2,200.00	3.57	321.88	2,196.55	88.64	-69.56	1,291,056.960	3,127,647.155	40.131443	-105.043486
2,400.00	3.57	321.88	2,396.16	98.43	-77.24	1,291,066.710	3,127,639.423	40.131470	-105.043513
2,600.00	3.57	321.88	2,595.77	108.22	-84.92	1,291,076.460	3,127,631.690	40.131497	-105.043541
2,800.00	3.57	321.88	2,795.39	118.01	-92.60	1,291,086.210	3,127,623.957	40.131524	-105.043568
3,000.00	3.57	321.88	2,995.00	127.80	-100.29	1,291,095.960	3,127,616.225	40.131550	-105.043596
3,200.00	3.57	321.88	3,194.61	137.59	-107.97	1,291,105.710	3,127,608.492	40.131577	-105.043623
3,400.00	3.57	321.88	3,394.22	147.38	-115.65	1,291,115.460	3,127,600.759	40.131604	-105.043650
3,600.00	3.57	321.88	3,593.84	157.17	-123.33	1,291,125.210	3,127,593.027	40.131631	-105.043678
3,800.00	3.57	321.88	3,793.45	166.96	-131.02	1,291,134.960	3,127,585.294	40.131658	-105.043705
4,000.00	3.57	321.88	3,993.06	176.75	-138.70	1,291,144.710	3,127,577.561	40.131685	-105.043733
4,200.00	3.57	321.88	4,192.67	186.54	-146.38	1,291,154.460	3,127,569.829	40.131712	-105.043760
4,400.00	3.57	321.88	4,392.29	196.33	-154.06	1,291,164.210	3,127,562.096	40.131739	-105.043788
4,600.00	3.57	321.88	4,591.90	206.12	-161.75	1,291,173.960	3,127,554.363	40.131765	-105.043815
4,800.00	3.57	321.88	4,791.51	215.90	-169.43	1,291,183.710	3,127,546.631	40.131792	-105.043843
5,000.00	3.57	321.88	4,991.12	225.69	-177.11	1,291,193.460	3,127,538.898	40.131819	-105.043870
5,200.00	3.57	321.88	5,190.74	235.48	-184.79	1,291,203.210	3,127,531.165	40.131846	-105.043898
5,400.00	3.57	321.88	5,390.35	245.27	-192.47	1,291,212.960	3,127,523.433	40.131873	-105.043925
5,600.00	3.57	321.88	5,589.96	255.06	-200.16	1,291,222.710	3,127,515.700	40.131900	-105.043953
5,800.00	3.57	321.88	5,789.57	264.85	-207.84	1,291,232.460	3,127,507.967	40.131927	-105.043980
6,000.00	3.57	321.88	5,989.19	274.64	-215.52	1,291,242.210	3,127,500.235	40.131954	-105.044008
6,200.00	3.57	321.88	6,188.80	284.43	-223.20	1,291,251.960	3,127,492.502	40.131980	-105.044035
6,400.00	3.57	321.88	6,388.41	294.22	-230.89	1,291,261.710	3,127,484.769	40.132007	-105.044063
6,600.00	3.57	321.88	6,588.02	304.01	-238.57	1,291,271.460	3,127,477.037	40.132034	-105.044090
6,650.94	3.57	321.88	6,638.86	306.51	-240.53	1,291,273.943	3,127,475.067	40.132041	-105.044097
KOP 8/100									
6,800.00	9.43	194.82	6,787.31	298.31	-246.54	1,291,265.722	3,127,469.099	40.132019	-105.044119
7,000.00	25.26	185.89	6,977.64	239.65	-255.17	1,291,207.009	3,127,460.771	40.131857	-105.044149
7,200.00	41.21	183.68	7,144.39	130.75	-263.83	1,291,098.066	3,127,452.666	40.131559	-105.044180
7,400.00	57.19	182.56	7,274.65	-19.95	-271.86	1,290,947.331	3,127,445.413	40.131145	-105.044209
7,600.00	73.18	181.78	7,358.32	-200.76	-278.63	1,290,766.485	3,127,439.574	40.130649	-105.044233
7,800.00	89.16	181.13	7,388.92	-397.69	-283.62	1,290,569.537	3,127,435.601	40.130108	-105.044251
7,810.47	90.00	181.10	7,389.00	-408.16	-283.82	1,290,559.065	3,127,435.450	40.130079	-105.044252
LP 90 Inc, 181.1 Az									
8,000.00	90.00	181.10	7,389.00	-597.65	-287.46	1,290,369.557	3,127,432.788	40.129559	-105.044265
8,200.00	90.00	181.10	7,389.00	-797.61	-291.30	1,290,169.577	3,127,429.979	40.129010	-105.044279
8,400.00	90.00	181.10	7,389.00	-997.58	-295.14	1,289,969.597	3,127,427.169	40.128461	-105.044292
8,600.00	90.00	181.10	7,389.00	-1,197.54	-298.98	1,289,769.617	3,127,424.360	40.127912	-105.044306
8,800.00	90.00	181.10	7,389.00	-1,397.50	-302.82	1,289,569.636	3,127,421.550	40.127363	-105.044320
9,000.00	90.00	181.10	7,389.00	-1,597.47	-306.66	1,289,369.656	3,127,418.741	40.126814	-105.044333

Database:	EDM 5000.14 Single User Db	Local Co-ordinate Reference:	Well REGNIER FARMS 1C-19H-B268
Company:	Crestone Peak Resources	TVD Reference:	WELL @ 4989.00usft (Original Well Elev)
Project:	Sec 19 T2N-R68W	MD Reference:	WELL @ 4989.00usft (Original Well Elev)
Site:	Regnier Farms Pad	North Reference:	True
Well:	REGNIER FARMS 1C-19H-B268	Survey Calculation Method:	Minimum Curvature
Wellbore:	Wellbore #1		
Design:	Design #1 22Mar18 kjs		

Planned Survey										
Measured Depth (usft)	Inclination (°)	Azimuth (°)	Vertical Depth (usft)	+N/-S (usft)	+E/-W (usft)	Map Northing (usft)	Map Easting (usft)	Latitude	Longitude	
9,200.00	90.00	181.10	7,389.00	-1,797.43	-310.50	1,289,169.676	3,127,415.932	40.126265	-105.044347	
9,400.00	90.00	181.10	7,389.00	-1,997.39	-314.34	1,288,969.696	3,127,413.122	40.125716	-105.044361	
9,600.00	90.00	181.10	7,389.00	-2,197.36	-318.18	1,288,769.715	3,127,410.313	40.125168	-105.044375	
9,800.00	90.00	181.10	7,389.00	-2,397.32	-322.02	1,288,569.735	3,127,407.503	40.124619	-105.044388	
9,810.47	90.00	181.10	7,389.00	-2,407.79	-322.22	1,288,559.262	3,127,407.356	40.124590	-105.044389	
Start Turn 2/100										
10,000.00	90.00	177.31	7,389.00	-2,597.26	-319.59	1,288,369.805	3,127,410.962	40.124070	-105.044380	
10,005.47	90.00	177.20	7,389.00	-2,602.73	-319.33	1,288,364.339	3,127,411.252	40.124055	-105.044379	
Hold 177.2 Az										
10,200.00	90.00	177.20	7,389.00	-2,797.03	-309.82	1,288,170.096	3,127,421.756	40.123521	-105.044345	
10,400.00	90.00	177.20	7,389.00	-2,996.79	-300.05	1,287,970.388	3,127,432.554	40.122973	-105.044310	
10,600.00	90.00	177.20	7,389.00	-3,196.55	-290.28	1,287,770.680	3,127,443.353	40.122425	-105.044275	
10,800.00	90.00	177.20	7,389.00	-3,396.31	-280.51	1,287,570.972	3,127,454.152	40.121876	-105.044240	
11,000.00	90.00	177.20	7,389.00	-3,596.07	-270.74	1,287,371.263	3,127,464.951	40.121328	-105.044205	
11,200.00	90.00	177.20	7,389.00	-3,795.83	-260.97	1,287,171.555	3,127,475.750	40.120780	-105.044170	
11,400.00	90.00	177.20	7,389.00	-3,995.59	-251.20	1,286,971.847	3,127,486.548	40.120231	-105.044135	
11,405.47	90.00	177.20	7,389.00	-4,001.06	-250.94	1,286,966.381	3,127,486.844	40.120216	-105.044134	
Start Turn 2.00										
11,600.00	90.00	181.09	7,389.00	-4,195.53	-248.04	1,286,771.931	3,127,490.747	40.119682	-105.044124	
11,620.47	90.00	181.50	7,389.00	-4,216.00	-248.50	1,286,751.461	3,127,490.390	40.119626	-105.044125	
Hold 181.5 Az										
11,800.00	90.00	181.50	7,389.00	-4,395.46	-253.20	1,286,571.974	3,127,486.615	40.119133	-105.044142	
12,000.00	90.00	181.50	7,389.00	-4,595.39	-258.43	1,286,372.019	3,127,482.409	40.118585	-105.044161	
12,200.00	90.00	181.50	7,389.00	-4,795.32	-263.67	1,286,172.063	3,127,478.204	40.118036	-105.044180	
12,400.00	90.00	181.50	7,389.00	-4,995.26	-268.90	1,285,972.107	3,127,473.998	40.117487	-105.044198	
12,600.00	90.00	181.50	7,389.00	-5,195.19	-274.14	1,285,772.151	3,127,469.793	40.116938	-105.044217	
12,800.00	90.00	181.50	7,389.00	-5,395.12	-279.38	1,285,572.196	3,127,465.587	40.116389	-105.044236	
13,000.00	90.00	181.50	7,389.00	-5,595.05	-284.61	1,285,372.240	3,127,461.382	40.115840	-105.044254	
13,200.00	90.00	181.50	7,389.00	-5,794.98	-289.85	1,285,172.284	3,127,457.176	40.115292	-105.044273	
13,400.00	90.00	181.50	7,389.00	-5,994.91	-295.08	1,284,972.328	3,127,452.971	40.114743	-105.044292	
13,600.00	90.00	181.50	7,389.00	-6,194.84	-300.32	1,284,772.372	3,127,448.765	40.114194	-105.044311	
13,800.00	90.00	181.50	7,389.00	-6,394.78	-305.55	1,284,572.417	3,127,444.560	40.113645	-105.044329	
14,000.00	90.00	181.50	7,389.00	-6,594.71	-310.79	1,284,372.461	3,127,440.354	40.113096	-105.044348	
14,200.00	90.00	181.50	7,389.00	-6,794.64	-316.02	1,284,172.505	3,127,436.149	40.112547	-105.044367	
14,400.00	90.00	181.50	7,389.00	-6,994.57	-321.26	1,283,972.549	3,127,431.943	40.111999	-105.044385	
14,600.00	90.00	181.50	7,389.00	-7,194.50	-326.49	1,283,772.594	3,127,427.738	40.111450	-105.044404	
14,620.47	90.00	181.50	7,389.00	-7,214.97	-327.03	1,283,752.124	3,127,427.307	40.111393	-105.044406	
Start Turn -2.00										
14,688.54	90.00	180.14	7,389.00	-7,283.03	-328.00	1,283,684.063	3,127,426.685	40.111207	-105.044410	
Hold 180.14 Az										
14,800.00	90.00	180.14	7,389.00	-7,394.49	-328.27	1,283,572.603	3,127,426.989	40.110901	-105.044411	
15,000.00	90.00	180.14	7,389.00	-7,594.48	-328.76	1,283,372.604	3,127,427.535	40.110352	-105.044412	
15,200.00	90.00	180.14	7,389.00	-7,794.48	-329.24	1,283,172.604	3,127,428.081	40.109803	-105.044414	
15,400.00	90.00	180.14	7,389.00	-7,994.48	-329.72	1,282,972.605	3,127,428.627	40.109254	-105.044416	
15,600.00	90.00	180.14	7,389.00	-8,194.48	-330.21	1,282,772.606	3,127,429.173	40.108705	-105.044417	
15,800.00	90.00	180.14	7,389.00	-8,394.48	-330.69	1,282,572.607	3,127,429.720	40.108156	-105.044419	
16,000.00	90.00	180.14	7,389.00	-8,594.48	-331.18	1,282,372.607	3,127,430.266	40.107606	-105.044421	
16,200.00	90.00	180.14	7,389.00	-8,794.48	-331.66	1,282,172.608	3,127,430.812	40.107057	-105.044423	
16,400.00	90.00	180.14	7,389.00	-8,994.48	-332.15	1,281,972.609	3,127,431.358	40.106508	-105.044424	
16,600.00	90.00	180.14	7,389.00	-9,194.48	-332.63	1,281,772.610	3,127,431.904	40.105959	-105.044426	
16,800.00	90.00	180.14	7,389.00	-9,394.48	-333.11	1,281,572.611	3,127,432.450	40.105410	-105.044428	
17,000.00	90.00	180.14	7,389.00	-9,594.48	-333.60	1,281,372.611	3,127,432.996	40.104861	-105.044429	
17,200.00	90.00	180.14	7,389.00	-9,794.48	-334.08	1,281,172.612	3,127,433.542	40.104312	-105.044431	
17,400.00	90.00	180.14	7,389.00	-9,994.48	-334.57	1,280,972.613	3,127,434.088	40.103763	-105.044433	

Database:	EDM 5000.14 Single User Db	Local Co-ordinate Reference:	Well REGNIER FARMS 1C-19H-B268
Company:	Crestone Peak Resources	TVD Reference:	WELL @ 4989.00usft (Original Well Elev)
Project:	Sec 19 T2N-R68W	MD Reference:	WELL @ 4989.00usft (Original Well Elev)
Site:	Regnier Farms Pad	North Reference:	True
Well:	REGNIER FARMS 1C-19H-B268	Survey Calculation Method:	Minimum Curvature
Wellbore:	Wellbore #1		
Design:	Design #1 22Mar18 kjs		

Planned Survey									
Measured Depth (usft)	Inclination (°)	Azimuth (°)	Vertical Depth (usft)	+N/-S (usft)	+E/-W (usft)	Map Northing (usft)	Map Easting (usft)	Latitude	Longitude
17,600.00	90.00	180.14	7,389.00	-10,194.48	-335.05	1,280,772.614	3,127,434.635	40.103214	-105.044435
17,800.00	90.00	180.14	7,389.00	-10,394.48	-335.53	1,280,572.614	3,127,435.181	40.102665	-105.044436
18,000.00	90.00	180.14	7,389.00	-10,594.48	-336.02	1,280,372.615	3,127,435.727	40.102116	-105.044438
18,200.00	90.00	180.14	7,389.00	-10,794.48	-336.50	1,280,172.616	3,127,436.273	40.101567	-105.044440
18,400.00	90.00	180.14	7,389.00	-10,994.47	-336.99	1,279,972.617	3,127,436.819	40.101018	-105.044441
18,600.00	90.00	180.14	7,389.00	-11,194.47	-337.47	1,279,772.617	3,127,437.365	40.100469	-105.044443
18,800.00	90.00	180.14	7,389.00	-11,394.47	-337.95	1,279,572.618	3,127,437.911	40.099920	-105.044445
19,000.00	90.00	180.14	7,389.00	-11,594.47	-338.44	1,279,372.619	3,127,438.457	40.099371	-105.044447
19,200.00	90.00	180.14	7,389.00	-11,794.47	-338.92	1,279,172.620	3,127,439.004	40.098822	-105.044448
19,400.00	90.00	180.14	7,389.00	-11,994.47	-339.41	1,278,972.620	3,127,439.550	40.098273	-105.044450
19,600.00	90.00	180.14	7,389.00	-12,194.47	-339.89	1,278,772.621	3,127,440.096	40.097724	-105.044452
19,800.00	90.00	180.14	7,389.00	-12,394.47	-340.37	1,278,572.622	3,127,440.642	40.097175	-105.044454
20,000.00	90.00	180.14	7,389.00	-12,594.47	-340.86	1,278,372.623	3,127,441.188	40.096626	-105.044455
20,200.00	90.00	180.14	7,389.00	-12,794.47	-341.34	1,278,172.623	3,127,441.734	40.096077	-105.044457
20,400.00	90.00	180.14	7,389.00	-12,994.47	-341.83	1,277,972.624	3,127,442.280	40.095528	-105.044459
20,600.00	90.00	180.14	7,389.00	-13,194.47	-342.31	1,277,772.625	3,127,442.826	40.094979	-105.044460
20,800.00	90.00	180.14	7,389.00	-13,394.47	-342.80	1,277,572.626	3,127,443.372	40.094430	-105.044462
21,000.00	90.00	180.14	7,389.00	-13,594.47	-343.28	1,277,372.626	3,127,443.919	40.093881	-105.044464
21,200.00	90.00	180.14	7,389.00	-13,794.47	-343.76	1,277,172.627	3,127,444.465	40.093332	-105.044466
21,400.00	90.00	180.14	7,389.00	-13,994.47	-344.25	1,276,972.628	3,127,445.011	40.092783	-105.044467
21,600.00	90.00	180.14	7,389.00	-14,194.47	-344.73	1,276,772.629	3,127,445.557	40.092234	-105.044469
21,800.00	90.00	180.14	7,389.00	-14,394.47	-345.22	1,276,572.629	3,127,446.103	40.091685	-105.044471
22,000.00	90.00	180.14	7,389.00	-14,594.46	-345.70	1,276,372.630	3,127,446.649	40.091136	-105.044472
22,200.00	90.00	180.14	7,389.00	-14,794.46	-346.18	1,276,172.631	3,127,447.195	40.090587	-105.044474
22,400.00	90.00	180.14	7,389.00	-14,994.46	-346.67	1,275,972.632	3,127,447.741	40.090038	-105.044476
22,600.00	90.00	180.14	7,389.00	-15,194.46	-347.15	1,275,772.632	3,127,448.288	40.089489	-105.044478
22,799.57	90.00	180.14	7,389.00	-15,394.03	-347.63	1,275,573.065	3,127,448.832	40.088941	-105.044479
TD at 22799.57									

Design Targets									
Target Name	Dip Angle (°)	Dip Dir. (°)	TVD (usft)	+N/-S (usft)	+E/-W (usft)	Northing (usft)	Easting (usft)	Latitude	Longitude
- hit/miss target									
- Shape									
REGNIER FARMS 1C-1	0.00	0.00	7,389.00	-408.16	-283.82	1,290,559.065	3,127,435.450	40.130079	-105.044252
- plan hits target center									
- Point									
REGNIER FARMS 1C-1	0.00	0.00	7,389.00	-15,394.03	-347.63	1,275,573.065	3,127,448.832	40.088941	-105.044479
- plan hits target center									
- Point									

Database:	EDM 5000.14 Single User Db	Local Co-ordinate Reference:	Well REGNIER FARMS 1C-19H-B268
Company:	Crestone Peak Resources	TVD Reference:	WELL @ 4989.00usft (Original Well Elev)
Project:	Sec 19 T2N-R68W	MD Reference:	WELL @ 4989.00usft (Original Well Elev)
Site:	Regnier Farms Pad	North Reference:	True
Well:	REGNIER FARMS 1C-19H-B268	Survey Calculation Method:	Minimum Curvature
Wellbore:	Wellbore #1		
Design:	Design #1 22Mar18 kjs		

Plan Annotations				
Measured Depth (usft)	Vertical Depth (usft)	Local Coordinates		Comment
		+N/-S (usft)	+E/-W (usft)	
300.00	300.00	0.00	0.00	Start Build 2.00
478.36	478.25	4.37	-3.43	Hold 3.57 Inc, 321.88 Az
6,650.94	6,638.86	306.51	-240.53	KOP 8/100
7,810.47	7,389.00	-408.16	-283.82	LP 90 Inc, 181.1 Az
9,810.47	7,389.00	-2,407.79	-322.22	Start Turn 2/100
10,005.47	7,389.00	-2,602.73	-319.33	Hold 177.2 Az
11,405.47	7,389.00	-4,001.06	-250.94	Start Turn 2.00
11,620.47	7,389.00	-4,216.00	-248.50	Hold 181.5 Az
14,620.47	7,389.00	-7,214.97	-327.03	Start Turn -2.00
14,688.54	7,389.00	-7,283.03	-328.00	Hold 180.14 Az
22,799.57	7,389.00	-15,394.03	-347.63	TD at 22799.57