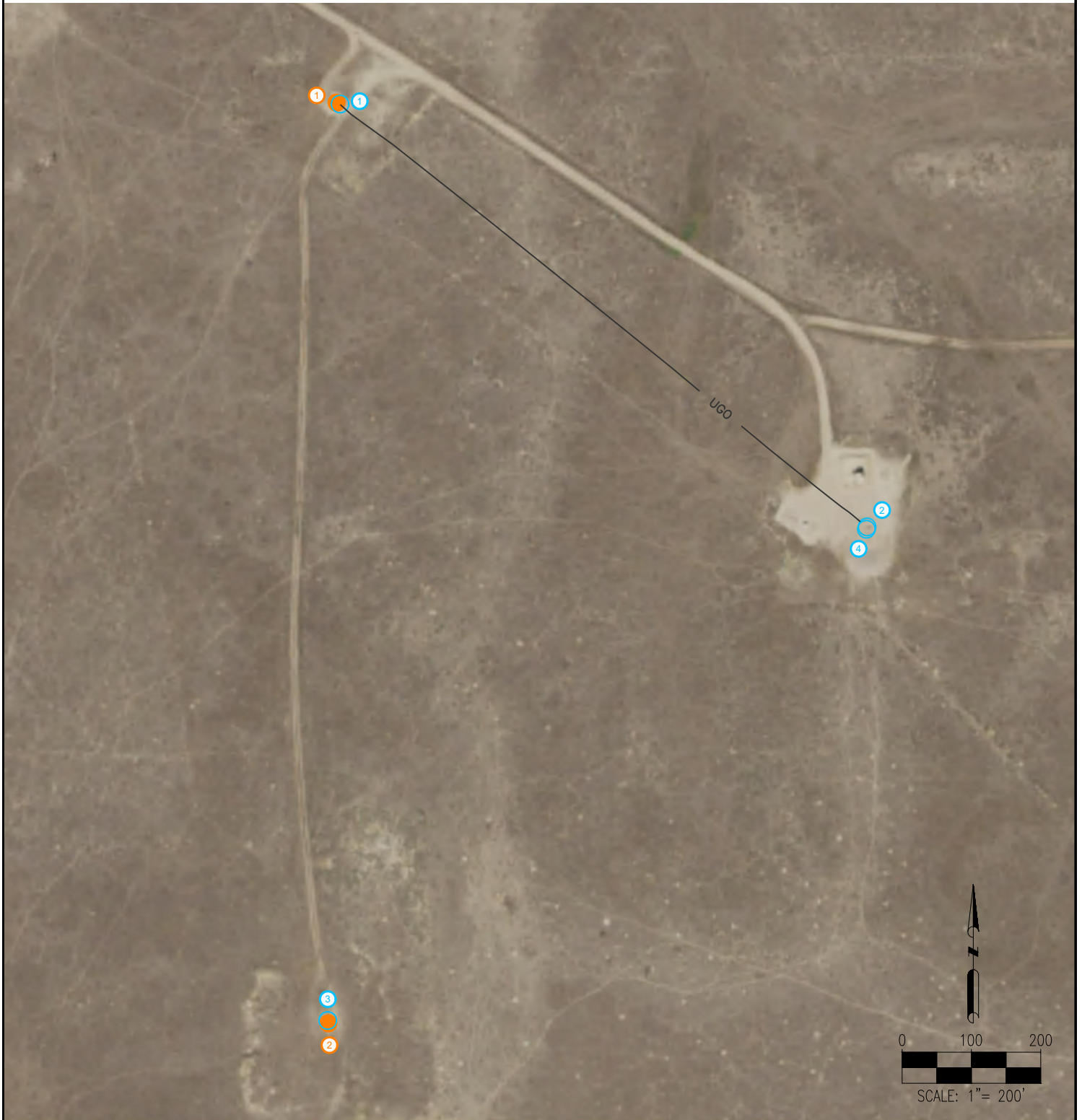


# HAZLET A #2, A #3 AS-BUILT EXHIBIT



**LEGEND:**

- = WELL HEAD
- = RISER
- UGO — = FLOWLINE

① HAZLET A #3  
② ~~HAZLET A #2~~

① HAZLET A #3 RISER AT WELLHEAD  
② HAZLET A #3 RISER AT SEPARATOR  
③ ~~HAZLET A #2 RISER AT WELLHEAD~~  
④ ~~HAZLET A #2 RISER AT SEPARATOR~~

**NOTE: LOCATES UNAVAILABLE FOR HAZLET A #2 FLOWLINE.**



7535 Hilltop Circle  
Denver, CO 80221  
(303) 928-7128  
www.ascentgeomatics.com


FIELD DATE:  
**08-09-18**

DRAWING DATE:  
**08-22-18**

BY: **SJH**      CHECKED: **IJM**

SURFACE LOCATION:  
**SEC. 32, T1S, R64W, 6TH P.M.**  
**ADAMS COUNTY, COLORADO**

PREPARED FOR:



**BAYSWATER**  
EXPLORATION AND PRODUCTION, LLC