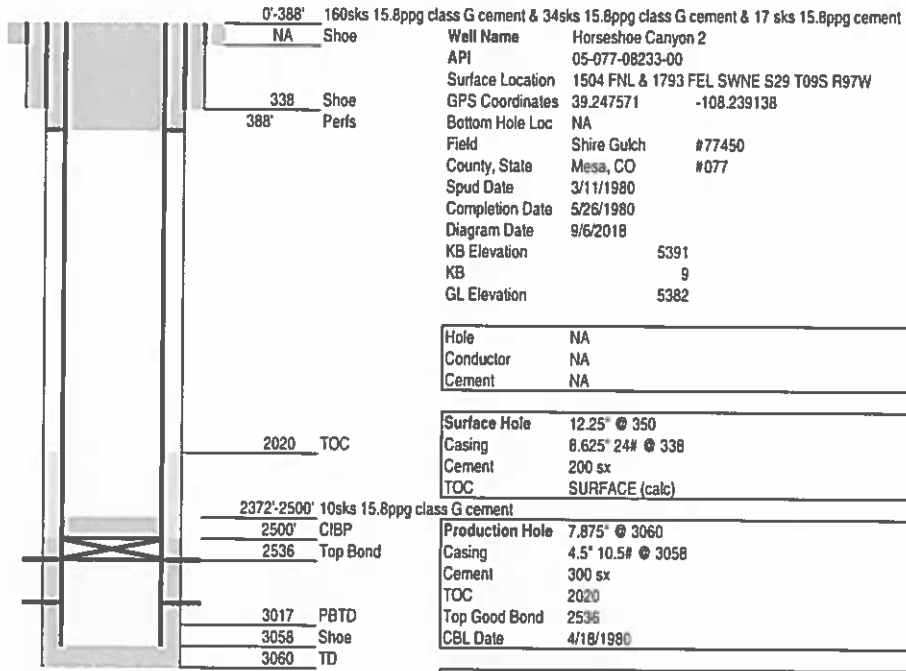


# Laramie Energy

## Current Wellbore Diagram

Not to Scale

Geological Tops	Depth
Rollins	2296
Cozzette	2516
Corcoran	2712
Mancos	2990



Well Name: Horseshoe Canyon 2  
 API: 05-077-08233-00  
 Surface Location: 1504 FNL & 1793 FEL SWNE S29 T09S R97W  
 GPS Coordinates: 39.247571 -108.239138  
 Bottom Hole Loc: NA  
 Field: Shire Gulch #77450  
 County, State: Mesa, CO #077  
 Spud Date: 3/11/1980  
 Completion Date: 5/26/1980  
 Diagram Date: 9/6/2018  
 KB Elevation: 5391  
 KB: 9  
 GL Elevation: 5382

Hole	NA
Conductor	NA
Cement	NA

Surface Hole	12.25" @ 350
Casing	8.625" 24# @ 338
Cement	200 sx
TOC	SURFACE (calc)

Production Hole	7.875" @ 3060
Casing	4.5" 10.5# @ 3058
Cement	300 sx
TOC	2020
Top Good Bond	2536
CBL Date	4/18/1980

Tubing	Unknown
--------	---------

Perforations	Top	Bottom	Holes	Date
Cozzette	2545	2578		
Corcoran	2757	2786		