



August 28, 2018

Ms. Julie Murphy, Director  
Colorado Oil and Gas Conservation Commission  
The Chancery Building  
1120 Lincoln Street, Suite 801  
Denver, CO 80203

RE: Park 4-63-4-1609D  
Township 4 North, Range 63 West, 6<sup>th</sup> P.M.  
Section 4: SE/4 NE/4 (surface location)  
Weld County, Colorado

Proposed Wellbore Unit (Containing 160 Acres, more or less):

Township 4 North, Range 63 West, 6<sup>th</sup> P.M.  
Section 3: N/2N/2

Dear Ms. Julie Murphy:

HighPoint is planning to drill the captioned boundary well in accordance with the provisions of COGCC 318A.e.

HighPoint's wellbore spacing unit consists of Section 3 N/2N/2, creating the above referenced spacing unit in which we will target the Codell formation. I certify that all of the owners within the proposed wellbore spacing unit were noticed and no objections were received.

Enclosed is a copy of the following document to assist you in your review and approval of HighPoint's proposed changes for the captioned well.

- Plat illustrating the proposed wellbore spacing unit on existing location plat

Thank you for your attention to the enclosed. HighPoint's respectfully requests that the COGCC review the enclosed information and approve the proposed changes for the captioned well.

If you have any questions, please contact me at 303-312-8145.

HIGHPOINT OPERATING CORPORATION

A handwritten signature in blue ink that reads "Delores Montoya".

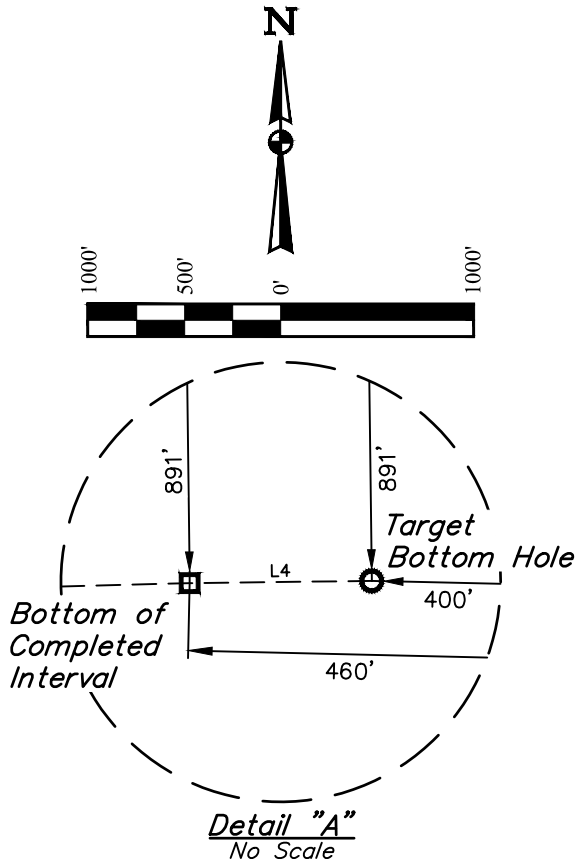
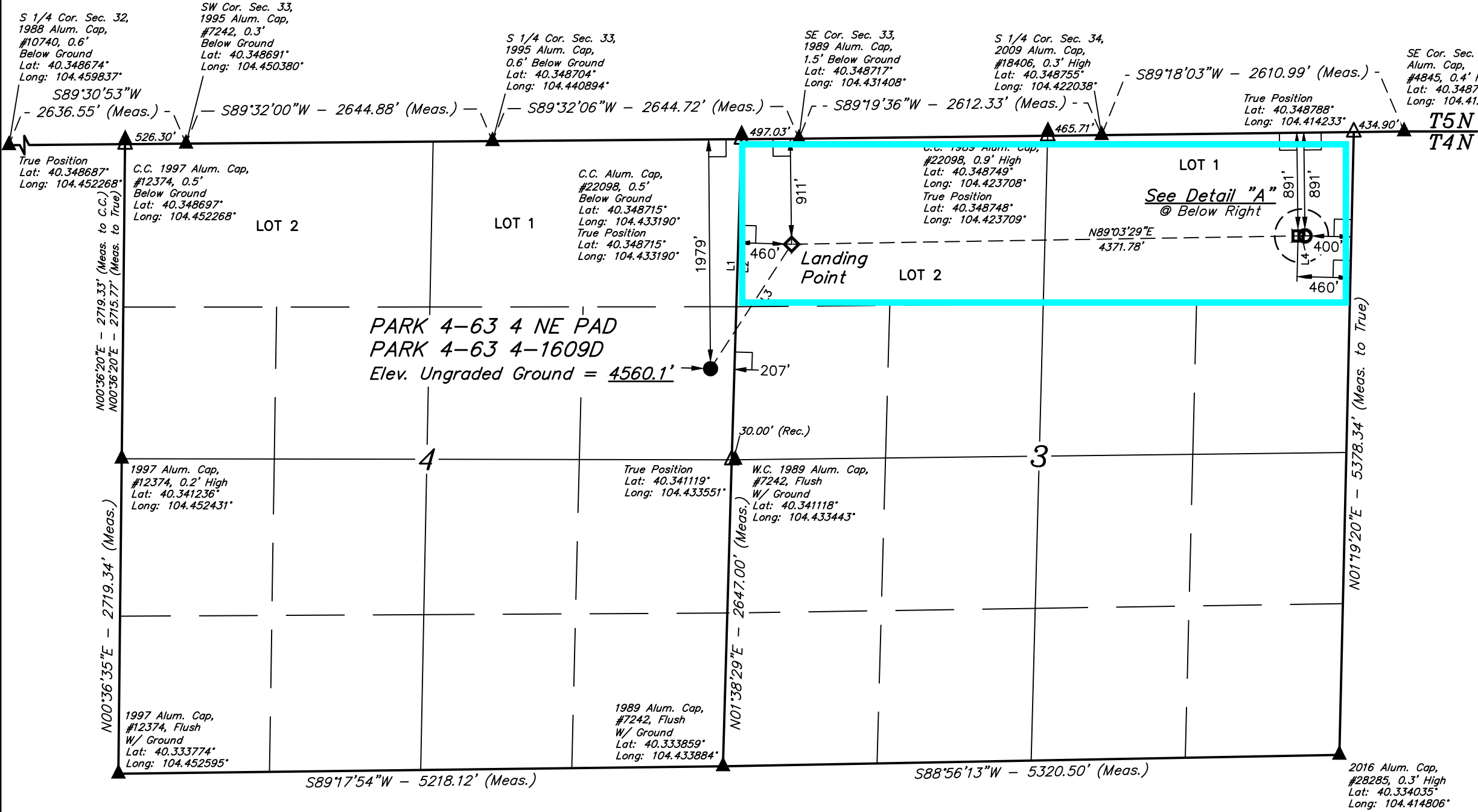
Delores Montoya  
Sr. Regulatory Analyst

T4N, R63W, 6th P.M.

HIGHPOINT OPERATING CORPORATION

PARK 4-63 4 NE PAD  
PARK 4-63 4-1609D  
SE 1/4 NE 1/4, SECTION 4, T4N, R63W, 6th P.M.  
WELD COUNTY, COLORADO

**BASIS OF BEARINGS**  
TRANSVERSE MERCATOR PROJECTION WITH  
A CENTRAL MERIDIAN OF W105°00'00".  
**BASIS OF ELEVATION**  
OPUS SOLUTION GENERATED NAVD 88



LINE TABLE		
LINE	DIRECTION	LENGTH
L1	N01°42'46"E	2769.72' (Meas. to C.C.)
L2	N01°42'46"E	2769.65' (Meas. to True)
L3	N33°04'18"E	1281.71'
L4	N89°18'03"E	60.04'

- LEGEND:**
- 90° SYMBOL
  - PROPOSED WELLHEAD.
  - LANDING POINT.
  - BOTTOM OF COMPLETED INTERVAL.
  - TARGET BOTTOM HOLE TD.
  - SECTION CORNERS LOCATED. (NAD 83)
  - SECTION CORNERS RE-ESTABLISHED. (Not Set on Ground.) (NAD 83)

NAD 83 (SURFACE LOCATION)	NAD 83 (LANDING POINT)	NAD 83 (BTM. OF COMPLETED INT.)	NAD 83 (TARGET BOTTOM HOLE)
LATITUDE = 40°20'35.81" (40.343281°)	LATITUDE = 40°20'46.38" (40.346217°)	LATITUDE = 40°20'46.81" (40.346336°)	LATITUDE = 40°20'46.81" (40.346337°)
LONGITUDE = 104°26'03.09" (104.434191°)	LONGITUDE = 104°25'53.97" (104.431658°)	LONGITUDE = 104°24'57.52" (104.415979°)	LONGITUDE = 104°24'56.75" (104.415764°)
NAD 27 (SURFACE LOCATION)	NAD 27 (LANDING POINT)	NAD 27 (BTM. OF COMPLETED INT.)	NAD 27 (TARGET BOTTOM HOLE)
LATITUDE = 40°20'35.88" (40.343300°)	LATITUDE = 40°20'46.45" (40.346235°)	LATITUDE = 40°20'46.88" (40.346355°)	LATITUDE = 40°20'46.88" (40.346355°)
LONGITUDE = 104°26'01.25" (104.433681°)	LONGITUDE = 104°25'52.13" (104.431148°)	LONGITUDE = 104°24'55.69" (104.415469°)	LONGITUDE = 104°24'54.91" (104.415254°)
STATE PLANE NAD 83 (CO. NORTH)	STATE PLANE NAD 83 (CO. NORTH)	STATE PLANE NAD 83 (CO. NORTH)	STATE PLANE NAD 83 (CO. NORTH)
N: 1369683.48' E: 3297079.97'	N: 1370761.14' E: 3297773.13'	N: 1370857.57' E: 3302142.53'	N: 1370858.64' E: 3302202.54'
STATE PLANE NAD 27 (CO. NORTH)	STATE PLANE NAD 27 (CO. NORTH)	STATE PLANE NAD 27 (CO. NORTH)	STATE PLANE NAD 27 (CO. NORTH)
N: 369685.50' E: 2297230.03'	N: 370763.13' E: 2297923.18'	N: 370859.57' E: 2302292.59'	N: 370860.64' E: 2302352.60'

PDOP = 1.5

CERTIFICATE

THIS IS TO CERTIFY THAT THE ABOVE PLAT WAS PREPARED FROM FIELD NOTES OF ACTUAL SURVEYS MADE BY ME OR UNDER MY SUPERVISION, AND THAT THE SAME ARE TRUE AND CORRECT TO THE BEST OF MY KNOWLEDGE AND BELIEF.

REGISTERED LAND SURVEYOR  
REGISTRATION NO. 28285  
STATE OF COLORADO  
2018-10-18

**UINTAH**  
ENGINEERING & LAND SURVEYING

**UELS, LLC**  
Corporate Office \* 85 South 200 East  
Vernal, UT 84078 \* (435) 789-1017

SURVEYED BY	MATTHEW MILLER, D.E.	08-06-18	SCALE
DRAWN BY	C.C.	08-07-18	1" = 1000'

**WELL LOCATION PLAT**