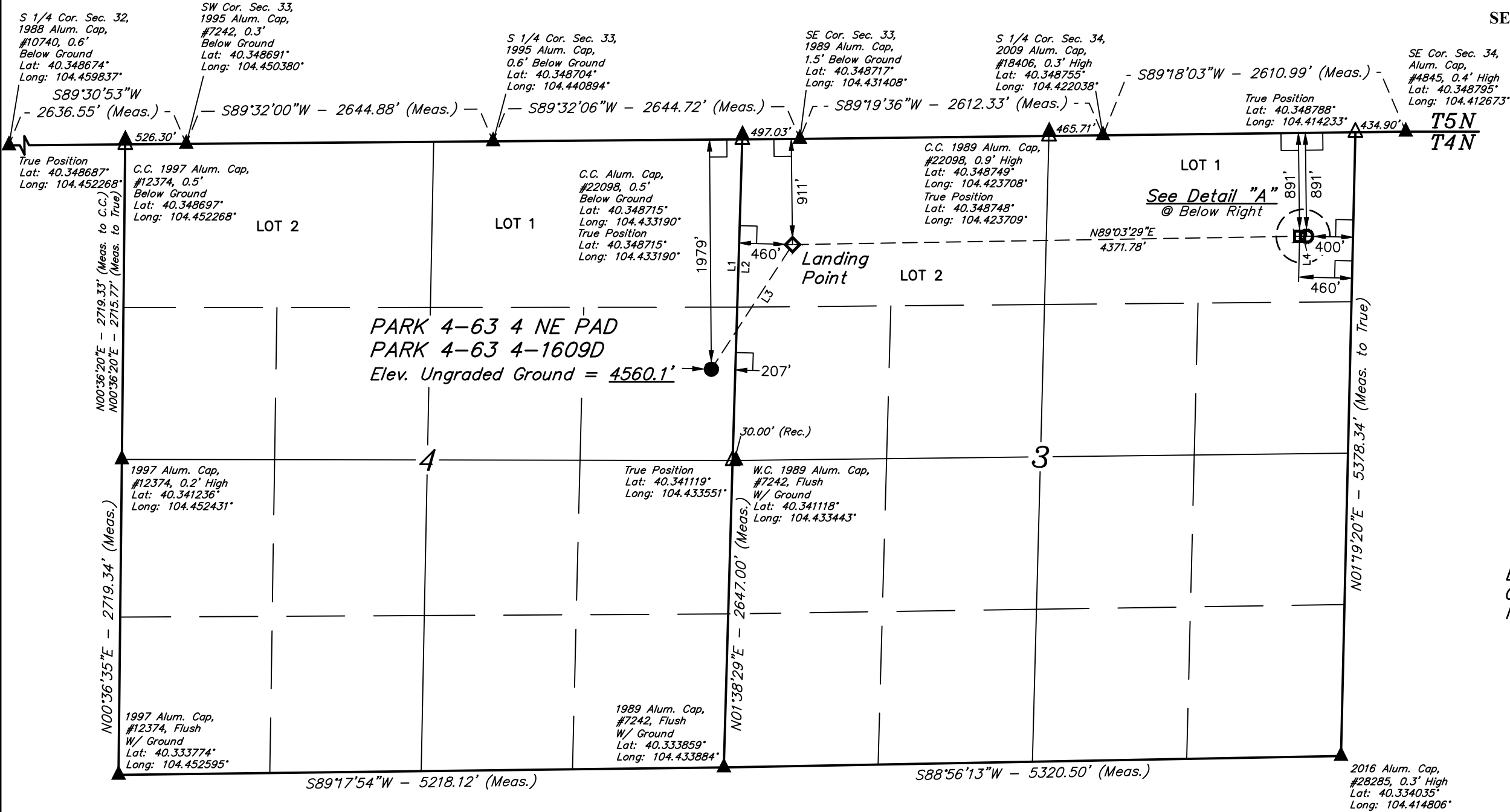


T4N, R63W, 6th P.M.

HIGHPOINT OPERATING CORPORATION

PARK 4-63 4 NE PAD
PARK 4-63 4-1609D
SE 1/4 NE 1/4, SECTION 4, T4N, R63W, 6th P.M.
WELD COUNTY, COLORADO

BASIS OF BEARINGS
TRANSVERSE MERCATOR PROJECTION WITH
A CENTRAL MERIDIAN OF W105°00'00".
BASIS OF ELEVATION
OPUS SOLUTION GENERATED NAVD 88



LINE TABLE		
LINE	DIRECTION	LENGTH
L1	N01°42'46"E	2769.72' (Meas. to C.C.)
L2	N01°42'46"E	2769.65' (Meas. to True)
L3	N33°04'18"E	1281.71'
L4	N89°18'03"E	60.04'

LEGEND:

- 90° SYMBOL
- PROPOSED WELLHEAD.
- LANDING POINT.
- BOTTOM OF COMPLETED INTERVAL.
- TARGET BOTTOM HOLE TD.
- SECTION CORNERS LOCATED. (NAD 83)
- SECTION CORNERS RE-ESTABLISHED. (Not Set on Ground.) (NAD 83)

NAD 83 (SURFACE LOCATION)	NAD 83 (LANDING POINT)	NAD 83 (BTM. OF COMPLETED INT.)	NAD 83 (TARGET BOTTOM HOLE)
LATITUDE = 40°20'35.81" (40.343281°)	LATITUDE = 40°20'46.38" (40.346217°)	LATITUDE = 40°20'46.81" (40.346336°)	LATITUDE = 40°20'46.81" (40.346337°)
LONGITUDE = 104°26'03.09" (104.434191°)	LONGITUDE = 104°25'53.97" (104.431658°)	LONGITUDE = 104°24'57.52" (104.415979°)	LONGITUDE = 104°24'56.75" (104.415764°)
NAD 27 (SURFACE LOCATION)	NAD 27 (LANDING POINT)	NAD 27 (BTM. OF COMPLETED INT.)	NAD 27 (TARGET BOTTOM HOLE)
LATITUDE = 40°20'35.88" (40.343300°)	LATITUDE = 40°20'46.45" (40.346235°)	LATITUDE = 40°20'46.88" (40.346355°)	LATITUDE = 40°20'46.88" (40.346355°)
LONGITUDE = 104°26'01.25" (104.433681°)	LONGITUDE = 104°25'52.13" (104.431148°)	LONGITUDE = 104°24'55.69" (104.415469°)	LONGITUDE = 104°24'54.91" (104.415254°)
STATE PLANE NAD 83 (CO. NORTH)	STATE PLANE NAD 83 (CO. NORTH)	STATE PLANE NAD 83 (CO. NORTH)	STATE PLANE NAD 83 (CO. NORTH)
N: 1369683.48' E: 3297079.97'	N: 1370761.14' E: 3297773.13'	N: 1370857.57' E: 3302142.53'	N: 1370858.64' E: 3302202.54'
STATE PLANE NAD 27 (CO. NORTH)	STATE PLANE NAD 27 (CO. NORTH)	STATE PLANE NAD 27 (CO. NORTH)	STATE PLANE NAD 27 (CO. NORTH)
N: 369685.50' E: 2297230.03'	N: 370763.13' E: 2297923.18'	N: 370859.57' E: 2302292.59'	N: 370860.64' E: 2302352.60'

PDOP = 1.5

CERTIFICATE
THIS IS TO CERTIFY THAT THE ABOVE PLAT WAS PREPARED FROM FIELD NOTES OF ACTUAL SURVEYS MADE BY ME OR UNDER MY SUPERVISION, AND THAT THE SAME ARE TRUE AND CORRECT TO THE BEST OF MY KNOWLEDGE AND BELIEF.

REGISTERED LAND SURVEYOR
REGISTRATION NO. 28285
STATE OF COLORADO
EXPIRATION DATE 08-15-18



UELS, LLC
Corporate Office * 85 South 200 East
Vernal, UT 84078 * (435) 789-1017

SURVEYED BY	MATTHEW MILLER, D.E.	08-06-18	SCALE
DRAWN BY	C.C.	08-07-18	1" = 1000'

WELL LOCATION PLAT