

BONANZA CREEK OIL COMPANY

Location: COLORADO Slot: SLOT#07 ANTELOPE O24-19-18XRLNC (225°FSL & 1288°FEL, SEC.19)
Field: WELD COUNTY Well: ANTELOPE O24-19-18XRLNC
Facility: SEC.19-T05N-R62W Wellbore: ANTELOPE O24-19-18XRLNC PWB

Plot reference wellpath is ANTELOPE O24-19-18XRLNC PWP (REV-A.0)

Grid System: NAD83 / Lambert Colorado SP, Northern Zone (501), US feet
* = Wellpath was transformed from a different geodetic datum

True vertical depths are referenced to RIG (17KB) (RKB)
Measured depths are referenced to RIG (17KB) (RKB)
North Reference: True north
Scale: True distance
RIG (17KB) (RKB) to Mean Sea Level: 4675 feet
Mean Sea Level to Mud line (At Slot: SLOT#07 ANTELOPE O24-19-18XRLNC (225°FSL & 1288°FEL, SEC.19)): 0 feet
Depths are in feet
Coordinates are in feet referenced to Slot
Created by: ingram on 2018-01-10
Database: Denver

Location Information

Facility Name				Grid East (US ft)	Grid North (US ft)	Latitude	Longitude
SEC.19-T05N-R62W				3317343.701	1382714.267	40°22'42.085"N	104°21'39.240"W
Slot	Local N (ft)	Local E (ft)	Grid East (US ft)	Grid North (US ft)	Latitude	Longitude	
SLOT#07 ANTELOPE O24-19-18XRLNC (225°FSL & 1288°FEL, SEC.19)	-3.24	-120.11	3317223.645	1382709.427	40°22'42.053"N	104°21'40.792"W	
RIG (17KB) (RKB) to Mud line (At Slot: SLOT#07 ANTELOPE O24-19-18XRLNC (225°FSL & 1288°FEL, SEC.19))						4675ft	
Mean Sea Level to Mud line (At Slot: SLOT#07 ANTELOPE O24-19-18XRLNC (225°FSL & 1288°FEL, SEC.19))						0ft	
RIG (17KB) (RKB) to Mean Sea Level						4675ft	

Well Profile Data

Design Comment	MD (ft)	Inc (°)	Az (°)	TVD (ft)	Local N (ft)	Local E (ft)	DLS (°/100ft)	VS (ft)
Tie On	17.00	0.000	253.471	17.00	0.00	0.00	0.00	0.00
End of Tangent	1700.00	0.000	253.471	1700.00	0.00	0.00	0.00	0.00
End of Build (XS)	2674.02	19.480	253.471	2655.37	-46.66	-157.22	2.00	-17.13
End of Tangent (XS)	6102.88	19.480	253.471	5887.94	-371.98	-1253.44	0.00	-136.54
End of 3D Arc (XS)	7050.53	90.000	357.896	6475.00	191.23	-1475.39	10.00	457.75
End of Tangent (XS)	16706.04	90.000	357.896	6475.00	9840.23	-1829.94	0.00	10008.93

Hole and Casing Sections

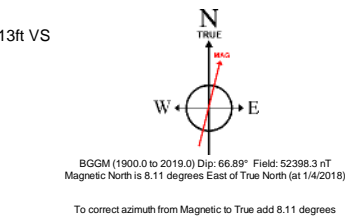
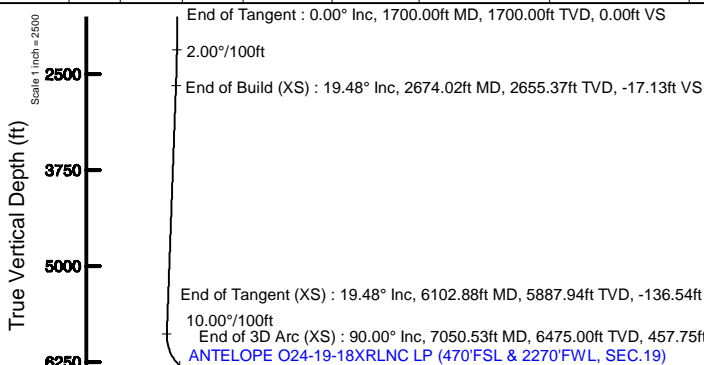
Name	Start MD (ft)	End MD (ft)	Interval (ft)	Start TVD (ft)	End TVD (ft)	Start Local N (ft)	Start Local E (ft)	End Local N (ft)	End Local E (ft)	Wellbore
9.625in Casing Surface	17.00	1550.00	1533.00	17.00	1550.00	0.00	0.00	0.00	0.00	ANTELOPE O24-19-18XRLNC PWB
8.5in Open Hole	1550.00	16706.04	15156.04	1550.00	6475.00	0.00	0.00	9840.23	-1829.94	ANTELOPE O24-19-18XRLNC PWB

Survey Program

Start MD (ft)	End MD (ft)	Tool	Model	Log Name/Comment	Wellbore
17.00	1550.00	BHI NavTrak	Custom BHI NavTrak (Standard Rotating+Axial Cor) (Rockies 0.03G model)		ANTELOPE O24-19-18XRLNC PWB
1550.00	16706.04	BHI AutoTrak Curve	Custom BHI AutoTrak Curve (Axial Cor, Short spacing) (Rockies 0.03G model)		ANTELOPE O24-19-18XRLNC PWB

Bottom Hole Location

MD (ft)	Inc (°)	Az (°)	TVD (ft)	Local N (ft)	Local E (ft)	Grid East (US ft)	Grid North (US ft)	Latitude	Longitude
16706.04	90.000	357.896	6475.00	9840.23	-1829.94	3315267.59	1392524.93	40°24'19.290"N	104°22'04.446"W



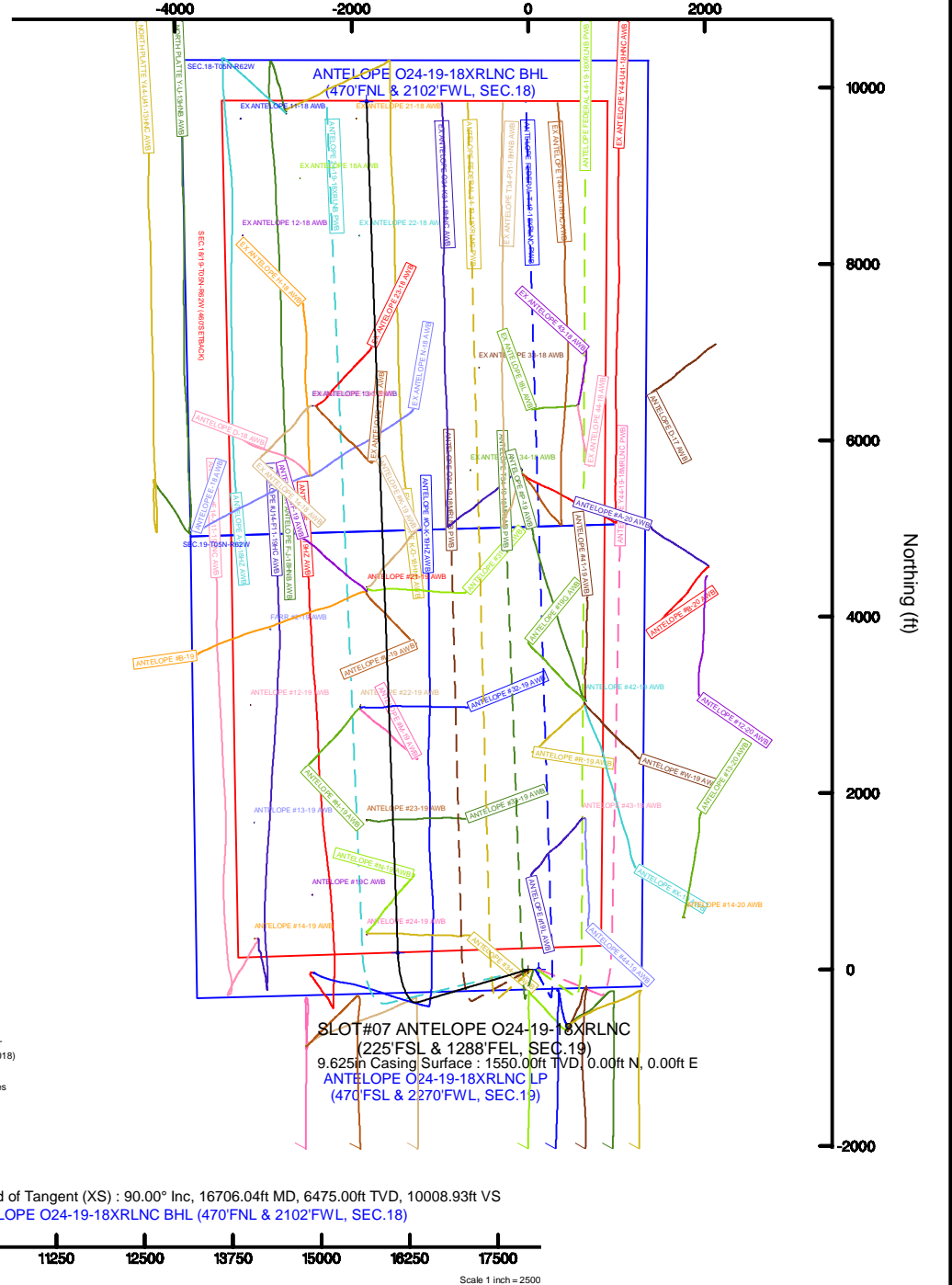
End of Tangent (XS) : 90.00° Inc, 16706.04ft MD, 6475.00ft TVD, 10008.93ft VS
ANTELOPE O24-19-18XRLNC BHL (470°FNL & 2102°FWL, SEC.18)

Vertical Section (ft)
Azimuth 349.47° with reference 0.00 N, 0.00 E



Scale 1 inch = 2000

Easting (ft)



Scale 1 inch = 2500



Planned Wellpath Report

ANTELOPE O24-19-18XRLNC PWP (REV-A.0)

Page 1 of 9



REFERENCE WELLPATH IDENTIFICATION

Operator	BONANZA CREEK OIL COMPANY	Slot	SLOT#07 ANTELOPE O24-19-18XRLNC (225'FSL & 1288'FEL, SEC.19)
Area	COLORADO	Well	ANTELOPE O24-19-18XRLNC
Field	WELD COUNTY	Wellbore	ANTELOPE O24-19-18XRLNC PWB
Facility	SEC.19-T05N-R62W		

REPORT SETUP INFORMATION

Projection System	NAD83 / Lambert Colorado SP, Northern Zone (501), US feet	Software System	WellArchitect® 5.0
North Reference	True	User	Ingmjmr
Scale	0.999959	Report Generated	1/10/2018 at 12:13:36 PM
Convergence at slot	0.74° East	Database/Source file	Denver/ANTELOPE_O24-19-18XRLNC_PWP__REV-A.0_.xml

WELLPATH LOCATION

	Local coordinates		Grid coordinates		Geographic coordinates	
	North[ft]	East[ft]	Easting[US ft]	Northing[US ft]	Latitude	Longitude
Slot Location	-3.24	-120.11	3317223.65	1382709.43	40°22'42.053"N	104°21'40.792"W
Facility Reference Pt			3317343.70	1382714.21	40°22'42.085"N	104°21'39.240"W
Field Reference Pt			3224525.77	1254425.87	40°01'44.400"N	104°41'53.556"W

WELLPATH DATUM

Calculation method	Minimum curvature	RIG (17'KB) (RKB) to Facility Vertical Datum	4675.00ft
Horizontal Reference Pt	Slot	RIG (17'KB) (RKB) to Mean Sea Level	4675.00ft
Vertical Reference Pt	RIG (17'KB) (RKB)	RIG (17'KB) (RKB) to Mud Line at Slot (SLOT#07 ANTELOPE O24-19-18XRLNC (225'FSL & 1288'FEL, SEC.19))	4675.00ft
MD Reference Pt	RIG (17'KB) (RKB)	Section Origin	N 0.00, E 0.00 ft
Field Vertical Reference	Mean Sea Level	Section Azimuth	349.47°



Planned Wellpath Report

ANTELOPE O24-19-18XRLNC PWP (REV-A.0)

Page 2 of 9



REFERENCE WELLPATH IDENTIFICATION			
Operator	BONANZA CREEK OIL COMPANY	Slot	SLOT#07 ANTELOPE O24-19-18XRLNC (225'FSL & 1288'FEL, SEC.19)
Area	COLORADO	Well	ANTELOPE O24-19-18XRLNC
Field	WELD COUNTY	Wellbore	ANTELOPE O24-19-18XRLNC PWB
Facility	SEC.19-T05N-R62W		

WELLPATH DATA (173 stations) † = interpolated/extrapolated station										
MD [ft]	Inclination [°]	Azimuth [°]	TVD [ft]	Vert Sect [ft]	North [ft]	East [ft]	Latitude	Longitude	DLS [°/100ft]	Comments
0.00†	0.000	253.471	0.00	0.00	0.00	0.00	40°22'42.053"N	104°21'40.792"W	0.00	
17.00	0.000	253.471	17.00	0.00	0.00	0.00	40°22'42.053"N	104°21'40.792"W	0.00	Tie On
117.00†	0.000	253.471	117.00	0.00	0.00	0.00	40°22'42.053"N	104°21'40.792"W	0.00	
217.00†	0.000	253.471	217.00	0.00	0.00	0.00	40°22'42.053"N	104°21'40.792"W	0.00	
317.00†	0.000	253.471	317.00	0.00	0.00	0.00	40°22'42.053"N	104°21'40.792"W	0.00	
417.00†	0.000	253.471	417.00	0.00	0.00	0.00	40°22'42.053"N	104°21'40.792"W	0.00	
517.00†	0.000	253.471	517.00	0.00	0.00	0.00	40°22'42.053"N	104°21'40.792"W	0.00	
617.00†	0.000	253.471	617.00	0.00	0.00	0.00	40°22'42.053"N	104°21'40.792"W	0.00	
717.00†	0.000	253.471	717.00	0.00	0.00	0.00	40°22'42.053"N	104°21'40.792"W	0.00	
817.00†	0.000	253.471	817.00	0.00	0.00	0.00	40°22'42.053"N	104°21'40.792"W	0.00	
917.00†	0.000	253.471	917.00	0.00	0.00	0.00	40°22'42.053"N	104°21'40.792"W	0.00	
1017.00†	0.000	253.471	1017.00	0.00	0.00	0.00	40°22'42.053"N	104°21'40.792"W	0.00	
1117.00†	0.000	253.471	1117.00	0.00	0.00	0.00	40°22'42.053"N	104°21'40.792"W	0.00	
1217.00†	0.000	253.471	1217.00	0.00	0.00	0.00	40°22'42.053"N	104°21'40.792"W	0.00	
1317.00†	0.000	253.471	1317.00	0.00	0.00	0.00	40°22'42.053"N	104°21'40.792"W	0.00	
1417.00†	0.000	253.471	1417.00	0.00	0.00	0.00	40°22'42.053"N	104°21'40.792"W	0.00	
1517.00†	0.000	253.471	1517.00	0.00	0.00	0.00	40°22'42.053"N	104°21'40.792"W	0.00	
1617.00†	0.000	253.471	1617.00	0.00	0.00	0.00	40°22'42.053"N	104°21'40.792"W	0.00	
1700.00	0.000	253.471	1700.00	0.00	0.00	0.00	40°22'42.053"N	104°21'40.792"W	0.00	End of Tangent
1717.00†	0.340	253.471	1717.00	-0.01	-0.01	-0.05	40°22'42.053"N	104°21'40.793"W	2.00	
1817.00†	2.340	253.471	1816.97	-0.25	-0.68	-2.29	40°22'42.046"N	104°21'40.822"W	2.00	
1917.00†	4.340	253.471	1916.79	-0.86	-2.34	-7.88	40°22'42.030"N	104°21'40.894"W	2.00	
2017.00†	6.340	253.471	2016.35	-1.83	-4.98	-16.80	40°22'42.004"N	104°21'41.009"W	2.00	
2117.00†	8.340	253.471	2115.53	-3.16	-8.62	-29.04	40°22'41.968"N	104°21'41.167"W	2.00	
2217.00†	10.340	253.471	2214.20	-4.86	-13.24	-44.60	40°22'41.922"N	104°21'41.368"W	2.00	
2317.00†	12.340	253.471	2312.24	-6.91	-18.83	-63.45	40°22'41.867"N	104°21'41.612"W	2.00	
2417.00†	14.340	253.471	2409.54	-9.32	-25.39	-85.57	40°22'41.802"N	104°21'41.898"W	2.00	
2517.00†	16.340	253.471	2505.97	-12.08	-32.92	-110.93	40°22'41.728"N	104°21'42.225"W	2.00	
2617.00†	18.340	253.471	2601.42	-15.20	-41.40	-139.50	40°22'41.644"N	104°21'42.595"W	2.00	
2674.02	19.480	253.471	2655.37	-17.13	-46.66	-157.22	40°22'41.592"N	104°21'42.823"W	2.00	End of Build (XS)



Planned Wellpath Report

ANTELOPE O24-19-18XRLNC PWP (REV-A.0)

Page 3 of 9



REFERENCE WELLPATH IDENTIFICATION			
Operator	BONANZA CREEK OIL COMPANY	Slot	SLOT#07 ANTELOPE O24-19-18XRLNC (225'FSL & 1288'FEL, SEC.19)
Area	COLORADO	Well	ANTELOPE O24-19-18XRLNC
Field	WELD COUNTY	Wellbore	ANTELOPE O24-19-18XRLNC PWB
Facility	SEC.19-T05N-R62W		

WELLPATH DATA (173 stations) † = interpolated/extrapolated station										
MD [ft]	Inclination [°]	Azimuth [°]	TVD [ft]	Vert Sect [ft]	North [ft]	East [ft]	Latitude	Longitude	DLS [°/100ft]	Comments
2717.00†	19.480	253.471	2695.88	-18.62	-50.73	-170.96	40°22'41.552"N	104°21'43.001"W	0.00	
2817.00†	19.480	253.471	2790.16	-22.11	-60.22	-202.93	40°22'41.458"N	104°21'43.414"W	0.00	
2917.00†	19.480	253.471	2884.43	-25.59	-69.71	-234.90	40°22'41.364"N	104°21'43.827"W	0.00	
3017.00†	19.480	253.471	2978.71	-29.07	-79.20	-266.87	40°22'41.270"N	104°21'44.240"W	0.00	
3117.00†	19.480	253.471	3072.98	-32.55	-88.68	-298.84	40°22'41.177"N	104°21'44.653"W	0.00	
3217.00†	19.480	253.471	3167.26	-36.04	-98.17	-330.81	40°22'41.083"N	104°21'45.066"W	0.00	
3317.00†	19.480	253.471	3261.54	-39.52	-107.66	-362.78	40°22'40.989"N	104°21'45.480"W	0.00	
3417.00†	19.480	253.471	3355.81	-43.00	-117.15	-394.75	40°22'40.895"N	104°21'45.893"W	0.00	
3517.00†	19.480	253.471	3450.09	-46.48	-126.64	-426.72	40°22'40.802"N	104°21'46.306"W	0.00	
3617.00†	19.480	253.471	3544.36	-49.97	-136.12	-458.69	40°22'40.708"N	104°21'46.719"W	0.00	
3717.00†	19.480	253.471	3638.64	-53.45	-145.61	-490.66	40°22'40.614"N	104°21'47.132"W	0.00	
3817.00†	19.480	253.471	3732.91	-56.93	-155.10	-522.63	40°22'40.520"N	104°21'47.545"W	0.00	
3917.00†	19.480	253.471	3827.19	-60.41	-164.59	-554.60	40°22'40.427"N	104°21'47.958"W	0.00	
4017.00†	19.480	253.471	3921.46	-63.90	-174.07	-586.57	40°22'40.333"N	104°21'48.371"W	0.00	
4117.00†	19.480	253.471	4015.74	-67.38	-183.56	-618.54	40°22'40.239"N	104°21'48.784"W	0.00	
4217.00†	19.480	253.471	4110.01	-70.86	-193.05	-650.51	40°22'40.145"N	104°21'49.197"W	0.00	
4317.00†	19.480	253.471	4204.29	-74.34	-202.54	-682.48	40°22'40.051"N	104°21'49.610"W	0.00	
4417.00†	19.480	253.471	4298.57	-77.83	-212.02	-714.46	40°22'39.958"N	104°21'50.024"W	0.00	
4517.00†	19.480	253.471	4392.84	-81.31	-221.51	-746.43	40°22'39.864"N	104°21'50.437"W	0.00	
4617.00†	19.480	253.471	4487.12	-84.79	-231.00	-778.40	40°22'39.770"N	104°21'50.850"W	0.00	
4717.00†	19.480	253.471	4581.39	-88.27	-240.49	-810.37	40°22'39.676"N	104°21'51.263"W	0.00	
4817.00†	19.480	253.471	4675.67	-91.76	-249.98	-842.34	40°22'39.583"N	104°21'51.676"W	0.00	
4917.00†	19.480	253.471	4769.94	-95.24	-259.46	-874.31	40°22'39.489"N	104°21'52.089"W	0.00	
5017.00†	19.480	253.471	4864.22	-98.72	-268.95	-906.28	40°22'39.395"N	104°21'52.502"W	0.00	
5117.00†	19.480	253.471	4958.49	-102.21	-278.44	-938.25	40°22'39.301"N	104°21'52.915"W	0.00	
5217.00†	19.480	253.471	5052.77	-105.69	-287.93	-970.22	40°22'39.208"N	104°21'53.328"W	0.00	
5317.00†	19.480	253.471	5147.05	-109.17	-297.41	-1002.19	40°22'39.114"N	104°21'53.741"W	0.00	
5417.00†	19.480	253.471	5241.32	-112.65	-306.90	-1034.16	40°22'39.020"N	104°21'54.154"W	0.00	
5517.00†	19.480	253.471	5335.60	-116.14	-316.39	-1066.13	40°22'38.926"N	104°21'54.568"W	0.00	
5617.00†	19.480	253.471	5429.87	-119.62	-325.88	-1098.10	40°22'38.833"N	104°21'54.981"W	0.00	



Planned Wellpath Report

ANTELOPE O24-19-18XRLNC PWP (REV-A.0)

Page 4 of 9



REFERENCE WELLPATH IDENTIFICATION			
Operator	BONANZA CREEK OIL COMPANY	Slot	SLOT#07 ANTELOPE O24-19-18XRLNC (225'FSL & 1288'FEL, SEC.19)
Area	COLORADO	Well	ANTELOPE O24-19-18XRLNC
Field	WELD COUNTY	Wellbore	ANTELOPE O24-19-18XRLNC PWB
Facility	SEC.19-T05N-R62W		

WELLPATH DATA (173 stations) † = interpolated/extrapolated station										
MD [ft]	Inclination [°]	Azimuth [°]	TVD [ft]	Vert Sect [ft]	North [ft]	East [ft]	Latitude	Longitude	DLS [°/100ft]	Comments
5717.00†	19.480	253.471	5524.15	-123.10	-335.37	-1130.07	40°22'38.739"N	104°21'55.394"W	0.00	
5817.00†	19.480	253.471	5618.42	-126.58	-344.85	-1162.04	40°22'38.645"N	104°21'55.807"W	0.00	
5917.00†	19.480	253.471	5712.70	-130.07	-354.34	-1194.01	40°22'38.551"N	104°21'56.220"W	0.00	
6017.00†	19.480	253.471	5806.97	-133.55	-363.83	-1225.98	40°22'38.457"N	104°21'56.633"W	0.00	
6102.88	19.480	253.471	5887.94	-136.54	-371.98	-1253.44	40°22'38.377"N	104°21'56.988"W	0.00	End of Tangent (XS)
6117.00†	19.195	257.647	5901.26	-136.86	-373.14	-1257.96	40°22'38.365"N	104°21'57.046"W	10.00	
6217.00†	20.004	287.672	5995.70	-129.28	-371.46	-1290.40	40°22'38.382"N	104°21'57.465"W	10.00	
6317.00†	24.991	310.589	6088.24	-104.69	-352.48	-1322.82	40°22'38.570"N	104°21'57.884"W	10.00	
6417.00†	32.269	325.038	6176.06	-63.83	-316.77	-1354.24	40°22'38.922"N	104°21'58.290"W	10.00	
6517.00†	40.622	334.355	6256.49	-7.96	-265.41	-1383.70	40°22'39.430"N	104°21'58.671"W	10.00	
6617.00†	49.500	340.883	6327.10	61.24	-199.98	-1410.31	40°22'40.076"N	104°21'59.015"W	10.00	
6717.00†	58.659	345.854	6385.72	141.66	-122.45	-1433.26	40°22'40.843"N	104°21'59.311"W	10.00	
6817.00†	67.975	349.930	6430.60	230.86	-35.18	-1451.85	40°22'41.705"N	104°21'59.552"W	10.00	
6917.00†	77.380	353.496	6460.35	326.12	59.18	-1465.51	40°22'42.637"N	104°21'59.728"W	10.00	
7017.00†	86.828	356.808	6474.07	424.55	157.75	-1473.84	40°22'43.611"N	104°21'59.836"W	10.00	
7050.53	90.000	357.896	6475.00†	457.75	191.23	-1475.39	40°22'43.942"N	104°21'59.856"W	10.00	End of 3D Arc (XS)
7117.00†	90.000	357.896	6475.00	523.50	257.65	-1477.83	40°22'44.599"N	104°21'59.888"W	0.00	
7217.00†	90.000	357.896	6475.00	622.42	357.58	-1481.50	40°22'45.586"N	104°21'59.935"W	0.00	
7317.00†	90.000	357.896	6475.00	721.34	457.52	-1485.17	40°22'46.574"N	104°21'59.983"W	0.00	
7417.00†	90.000	357.896	6475.00	820.26	557.45	-1488.85	40°22'47.561"N	104°22'00.030"W	0.00	
7517.00†	90.000	357.896	6475.00	919.18	657.38	-1492.52	40°22'48.549"N	104°22'00.078"W	0.00	
7617.00†	90.000	357.896	6475.00	1018.10	757.31	-1496.19	40°22'49.536"N	104°22'00.125"W	0.00	
7717.00†	90.000	357.896	6475.00	1117.02	857.25	-1499.86	40°22'50.524"N	104°22'00.173"W	0.00	
7817.00†	90.000	357.896	6475.00	1215.94	957.18	-1503.53	40°22'51.511"N	104°22'00.220"W	0.00	
7917.00†	90.000	357.896	6475.00	1314.86	1057.11	-1507.20	40°22'52.499"N	104°22'00.268"W	0.00	
8017.00†	90.000	357.896	6475.00	1413.78	1157.04	-1510.88	40°22'53.486"N	104°22'00.315"W	0.00	
8117.00†	90.000	357.896	6475.00	1512.70	1256.98	-1514.55	40°22'54.474"N	104°22'00.363"W	0.00	
8217.00†	90.000	357.896	6475.00	1611.62	1356.91	-1518.22	40°22'55.461"N	104°22'00.410"W	0.00	
8317.00†	90.000	357.896	6475.00	1710.53	1456.84	-1521.89	40°22'56.449"N	104°22'00.458"W	0.00	
8417.00†	90.000	357.896	6475.00	1809.45	1556.78	-1525.56	40°22'57.436"N	104°22'00.505"W	0.00	



Planned Wellpath Report

ANTELOPE O24-19-18XRLNC PWP (REV-A.0)

Page 5 of 9



REFERENCE WELLPATH IDENTIFICATION			
Operator	BONANZA CREEK OIL COMPANY	Slot	SLOT#07 ANTELOPE O24-19-18XRLNC (225'FSL & 1288'FEL, SEC.19)
Area	COLORADO	Well	ANTELOPE O24-19-18XRLNC
Field	WELD COUNTY	Wellbore	ANTELOPE O24-19-18XRLNC PWB
Facility	SEC.19-T05N-R62W		

WELLPATH DATA (173 stations) † = interpolated/extrapolated station										
MD [ft]	Inclination [°]	Azimuth [°]	TVD [ft]	Vert Sect [ft]	North [ft]	East [ft]	Latitude	Longitude	DLS [°/100ft]	Comments
8517.00†	90.000	357.896	6475.00	1908.37	1656.71	-1529.24	40°22'58.424"N	104°22'00.553"W	0.00	
8617.00†	90.000	357.896	6475.00	2007.29	1756.64	-1532.91	40°22'59.411"N	104°22'00.600"W	0.00	
8717.00†	90.000	357.896	6475.00	2106.21	1856.57	-1536.58	40°23'00.399"N	104°22'00.648"W	0.00	
8817.00†	90.000	357.896	6475.00	2205.13	1956.51	-1540.25	40°23'01.386"N	104°22'00.696"W	0.00	
8917.00†	90.000	357.896	6475.00	2304.05	2056.44	-1543.92	40°23'02.374"N	104°22'00.743"W	0.00	
9017.00†	90.000	357.896	6475.00	2402.97	2156.37	-1547.60	40°23'03.361"N	104°22'00.791"W	0.00	
9117.00†	90.000	357.896	6475.00	2501.89	2256.30	-1551.27	40°23'04.349"N	104°22'00.838"W	0.00	
9217.00†	90.000	357.896	6475.00	2600.81	2356.24	-1554.94	40°23'05.336"N	104°22'00.886"W	0.00	
9317.00†	90.000	357.896	6475.00	2699.73	2456.17	-1558.61	40°23'06.324"N	104°22'00.933"W	0.00	
9417.00†	90.000	357.896	6475.00	2798.65	2556.10	-1562.28	40°23'07.311"N	104°22'00.981"W	0.00	
9517.00†	90.000	357.896	6475.00	2897.57	2656.03	-1565.96	40°23'08.299"N	104°22'01.028"W	0.00	
9617.00†	90.000	357.896	6475.00	2996.49	2755.97	-1569.63	40°23'09.286"N	104°22'01.076"W	0.00	
9717.00†	90.000	357.896	6475.00	3095.41	2855.90	-1573.30	40°23'10.274"N	104°22'01.123"W	0.00	
9817.00†	90.000	357.896	6475.00	3194.33	2955.83	-1576.97	40°23'11.261"N	104°22'01.171"W	0.00	
9917.00†	90.000	357.896	6475.00	3293.25	3055.76	-1580.64	40°23'12.249"N	104°22'01.218"W	0.00	
10017.00†	90.000	357.896	6475.00	3392.17	3155.70	-1584.32	40°23'13.236"N	104°22'01.266"W	0.00	
10117.00†	90.000	357.896	6475.00	3491.09	3255.63	-1587.99	40°23'14.224"N	104°22'01.313"W	0.00	
10217.00†	90.000	357.896	6475.00	3590.01	3355.56	-1591.66	40°23'15.211"N	104°22'01.361"W	0.00	
10317.00†	90.000	357.896	6475.00	3688.92	3455.49	-1595.33	40°23'16.199"N	104°22'01.409"W	0.00	
10417.00†	90.000	357.896	6475.00	3787.84	3555.43	-1599.00	40°23'17.186"N	104°22'01.456"W	0.00	
10517.00†	90.000	357.896	6475.00	3886.76	3655.36	-1602.68	40°23'18.174"N	104°22'01.504"W	0.00	
10617.00†	90.000	357.896	6475.00	3985.68	3755.29	-1606.35	40°23'19.161"N	104°22'01.551"W	0.00	
10717.00†	90.000	357.896	6475.00	4084.60	3855.22	-1610.02	40°23'20.149"N	104°22'01.599"W	0.00	
10817.00†	90.000	357.896	6475.00	4183.52	3955.16	-1613.69	40°23'21.136"N	104°22'01.646"W	0.00	
10917.00†	90.000	357.896	6475.00	4282.44	4055.09	-1617.36	40°23'22.123"N	104°22'01.694"W	0.00	
11017.00†	90.000	357.896	6475.00	4381.36	4155.02	-1621.04	40°23'23.111"N	104°22'01.741"W	0.00	
11117.00†	90.000	357.896	6475.00	4480.28	4254.95	-1624.71	40°23'24.098"N	104°22'01.789"W	0.00	
11217.00†	90.000	357.896	6475.00	4579.20	4354.89	-1628.38	40°23'25.086"N	104°22'01.836"W	0.00	
11317.00†	90.000	357.896	6475.00	4678.12	4454.82	-1632.05	40°23'26.073"N	104°22'01.884"W	0.00	
11417.00†	90.000	357.896	6475.00	4777.04	4554.75	-1635.72	40°23'27.061"N	104°22'01.931"W	0.00	



Planned Wellpath Report

ANTELOPE O24-19-18XRLNC PWP (REV-A.0)

Page 6 of 9



REFERENCE WELLPATH IDENTIFICATION			
Operator	BONANZA CREEK OIL COMPANY	Slot	SLOT#07 ANTELOPE O24-19-18XRLNC (225'FSL & 1288'FEL, SEC.19)
Area	COLORADO	Well	ANTELOPE O24-19-18XRLNC
Field	WELD COUNTY	Wellbore	ANTELOPE O24-19-18XRLNC PWB
Facility	SEC.19-T05N-R62W		

WELLPATH DATA (173 stations) † = interpolated/extrapolated station										
MD [ft]	Inclination [°]	Azimuth [°]	TVD [ft]	Vert Sect [ft]	North [ft]	East [ft]	Latitude	Longitude	DLS [°/100ft]	Comments
11517.00†	90.000	357.896	6475.00	4875.96	4654.68	-1639.40	40°23'28.048"N	104°22'01.979"W	0.00	
11617.00†	90.000	357.896	6475.00	4974.88	4754.62	-1643.07	40°23'29.036"N	104°22'02.027"W	0.00	
11717.00†	90.000	357.896	6475.00	5073.80	4854.55	-1646.74	40°23'30.023"N	104°22'02.074"W	0.00	
11817.00†	90.000	357.896	6475.00	5172.72	4954.48	-1650.41	40°23'31.011"N	104°22'02.122"W	0.00	
11917.00†	90.000	357.896	6475.00	5271.64	5054.41	-1654.08	40°23'31.998"N	104°22'02.169"W	0.00	
12017.00†	90.000	357.896	6475.00	5370.56	5154.35	-1657.76	40°23'32.986"N	104°22'02.217"W	0.00	
12117.00†	90.000	357.896	6475.00	5469.48	5254.28	-1661.43	40°23'33.973"N	104°22'02.264"W	0.00	
12217.00†	90.000	357.896	6475.00	5568.39	5354.21	-1665.10	40°23'34.961"N	104°22'02.312"W	0.00	
12317.00†	90.000	357.896	6475.00	5667.31	5454.15	-1668.77	40°23'35.948"N	104°22'02.359"W	0.00	
12417.00†	90.000	357.896	6475.00	5766.23	5554.08	-1672.44	40°23'36.936"N	104°22'02.407"W	0.00	
12517.00†	90.000	357.896	6475.00	5865.15	5654.01	-1676.12	40°23'37.923"N	104°22'02.454"W	0.00	
12617.00†	90.000	357.896	6475.00	5964.07	5753.94	-1679.79	40°23'38.911"N	104°22'02.502"W	0.00	
12717.00†	90.000	357.896	6475.00	6062.99	5853.88	-1683.46	40°23'39.898"N	104°22'02.550"W	0.00	
12817.00†	90.000	357.896	6475.00	6161.91	5953.81	-1687.13	40°23'40.886"N	104°22'02.597"W	0.00	
12917.00†	90.000	357.896	6475.00	6260.83	6053.74	-1690.80	40°23'41.873"N	104°22'02.645"W	0.00	
13017.00†	90.000	357.896	6475.00	6359.75	6153.67	-1694.48	40°23'42.861"N	104°22'02.692"W	0.00	
13117.00†	90.000	357.896	6475.00	6458.67	6253.61	-1698.15	40°23'43.848"N	104°22'02.740"W	0.00	
13217.00†	90.000	357.896	6475.00	6557.59	6353.54	-1701.82	40°23'44.836"N	104°22'02.787"W	0.00	
13317.00†	90.000	357.896	6475.00	6656.51	6453.47	-1705.49	40°23'45.823"N	104°22'02.835"W	0.00	
13417.00†	90.000	357.896	6475.00	6755.43	6553.40	-1709.16	40°23'46.811"N	104°22'02.882"W	0.00	
13517.00†	90.000	357.896	6475.00	6854.35	6653.34	-1712.83	40°23'47.798"N	104°22'02.930"W	0.00	
13617.00†	90.000	357.896	6475.00	6953.27	6753.27	-1716.51	40°23'48.786"N	104°22'02.977"W	0.00	
13717.00†	90.000	357.896	6475.00	7052.19	6853.20	-1720.18	40°23'49.773"N	104°22'03.025"W	0.00	
13817.00†	90.000	357.896	6475.00	7151.11	6953.13	-1723.85	40°23'50.761"N	104°22'03.073"W	0.00	
13917.00†	90.000	357.896	6475.00	7250.03	7053.07	-1727.52	40°23'51.748"N	104°22'03.120"W	0.00	
14017.00†	90.000	357.896	6475.00	7348.95	7153.00	-1731.19	40°23'52.736"N	104°22'03.168"W	0.00	
14117.00†	90.000	357.896	6475.00	7447.87	7252.93	-1734.87	40°23'53.723"N	104°22'03.215"W	0.00	
14217.00†	90.000	357.896	6475.00	7546.78	7352.86	-1738.54	40°23'54.711"N	104°22'03.263"W	0.00	
14317.00†	90.000	357.896	6475.00	7645.70	7452.80	-1742.21	40°23'55.698"N	104°22'03.310"W	0.00	
14417.00†	90.000	357.896	6475.00	7744.62	7552.73	-1745.88	40°23'56.686"N	104°22'03.358"W	0.00	



Planned Wellpath Report

ANTELOPE O24-19-18XRLNC PWP (REV-A.0)

Page 7 of 9



REFERENCE WELLPATH IDENTIFICATION			
Operator	BONANZA CREEK OIL COMPANY	Slot	SLOT#07 ANTELOPE O24-19-18XRLNC (225'FSL & 1288'FEL, SEC.19)
Area	COLORADO	Well	ANTELOPE O24-19-18XRLNC
Field	WELD COUNTY	Wellbore	ANTELOPE O24-19-18XRLNC PWB
Facility	SEC.19-T05N-R62W		

WELLPATH DATA (173 stations) † = interpolated/extrapolated station										
MD [ft]	Inclination [°]	Azimuth [°]	TVD [ft]	Vert Sect [ft]	North [ft]	East [ft]	Latitude	Longitude	DLS [°/100ft]	Comments
14517.00†	90.000	357.896	6475.00	7843.54	7652.66	-1749.55	40°23'57.673"N	104°22'03.405"W	0.00	
14617.00†	90.000	357.896	6475.00	7942.46	7752.59	-1753.23	40°23'58.661"N	104°22'03.453"W	0.00	
14717.00†	90.000	357.896	6475.00	8041.38	7852.53	-1756.90	40°23'59.648"N	104°22'03.501"W	0.00	
14817.00†	90.000	357.896	6475.00	8140.30	7952.46	-1760.57	40°24'00.636"N	104°22'03.548"W	0.00	
14917.00†	90.000	357.896	6475.00	8239.22	8052.39	-1764.24	40°24'01.623"N	104°22'03.596"W	0.00	
15017.00†	90.000	357.896	6475.00	8338.14	8152.32	-1767.91	40°24'02.611"N	104°22'03.643"W	0.00	
15117.00†	90.000	357.896	6475.00	8437.06	8252.26	-1771.59	40°24'03.598"N	104°22'03.691"W	0.00	
15217.00†	90.000	357.896	6475.00	8535.98	8352.19	-1775.26	40°24'04.586"N	104°22'03.738"W	0.00	
15317.00†	90.000	357.896	6475.00	8634.90	8452.12	-1778.93	40°24'05.573"N	104°22'03.786"W	0.00	
15417.00†	90.000	357.896	6475.00	8733.82	8552.05	-1782.60	40°24'06.561"N	104°22'03.833"W	0.00	
15517.00†	90.000	357.896	6475.00	8832.74	8651.99	-1786.27	40°24'07.548"N	104°22'03.881"W	0.00	
15617.00†	90.000	357.896	6475.00	8931.66	8751.92	-1789.95	40°24'08.536"N	104°22'03.929"W	0.00	
15717.00†	90.000	357.896	6475.00	9030.58	8851.85	-1793.62	40°24'09.523"N	104°22'03.976"W	0.00	
15817.00†	90.000	357.896	6475.00	9129.50	8951.78	-1797.29	40°24'10.511"N	104°22'04.024"W	0.00	
15917.00†	90.000	357.896	6475.00	9228.42	9051.72	-1800.96	40°24'11.498"N	104°22'04.071"W	0.00	
16017.00†	90.000	357.896	6475.00	9327.34	9151.65	-1804.63	40°24'12.486"N	104°22'04.119"W	0.00	
16117.00†	90.000	357.896	6475.00	9426.26	9251.58	-1808.31	40°24'13.473"N	104°22'04.166"W	0.00	
16217.00†	90.000	357.896	6475.00	9525.17	9351.51	-1811.98	40°24'14.461"N	104°22'04.214"W	0.00	
16317.00†	90.000	357.896	6475.00	9624.09	9451.45	-1815.65	40°24'15.448"N	104°22'04.261"W	0.00	
16417.00†	90.000	357.896	6475.00	9723.01	9551.38	-1819.32	40°24'16.436"N	104°22'04.309"W	0.00	
16517.00†	90.000	357.896	6475.00	9821.93	9651.31	-1822.99	40°24'17.423"N	104°22'04.357"W	0.00	
16617.00†	90.000	357.896	6475.00	9920.85	9751.25	-1826.67	40°24'18.411"N	104°22'04.404"W	0.00	
16706.04	90.000	357.896	6475.00 ²	10008.93	9840.23	-1829.94	40°24'19.290"N	104°22'04.446"W	0.00	End of Tangent (XS)



Planned Wellpath Report

ANTELOPE O24-19-18XRLNC PWP (REV-A.0)

Page 8 of 9



REFERENCE WELLPATH IDENTIFICATION			
Operator	BONANZA CREEK OIL COMPANY	Slot	SLOT#07 ANTELOPE O24-19-18XRLNC (225'FSL & 1288'FEL, SEC.19)
Area	COLORADO	Well	ANTELOPE O24-19-18XRLNC
Field	WELD COUNTY	Wellbore	ANTELOPE O24-19-18XRLNC PWB
Facility	SEC.19-T05N-R62W		

HOLE & CASING SECTIONS - Ref Wellbore: ANTELOPE O24-19-18XRLNC PWB Ref Wellpath: ANTELOPE O24-19-18XRLNC PWP (REV-A.0)									
String/Diameter	Start MD [ft]	End MD [ft]	Interval [ft]	Start TVD [ft]	End TVD [ft]	Start N/S [ft]	Start E/W [ft]	End N/S [ft]	End E/W [ft]
9.625in Casing Surface	17.00	1550.00	1533.00	17.00	1550.00	0.00	0.00	0.00	0.00
8.5in Open Hole	1550.00	16706.04	15156.04	1550.00	6475.00	0.00	0.00	9840.23	-1829.94

TARGETS									
Name	MD [ft]	TVD [ft]	North [ft]	East [ft]	Grid East [US ft]	Grid North [US ft]	Latitude	Longitude	Shape
SEC.18-T05N-R62W		0.00	3.24	120.11	3317343.70	1382714.21	40°22'42.085"N	104°21'39.240"W	polygon
SEC.19-T05N-R62W		0.00	3.24	120.11	3317343.70	1382714.21	40°22'42.085"N	104°21'39.240"W	polygon
2) ANTELOPE O24-19-18XRLNC BHL (470'FNL & 2102'FWL, SEC.18)	16706.04	6475.00	9840.23	-1829.94	3315267.59	1392524.93	40°24'19.290"N	104°22'04.446"W	point
1) ANTELOPE O24-19-18XRLNC LP (470'FSL & 2270'FWL, SEC.19)	7050.53	6475.00	191.23	-1475.39	3315745.99	1382881.69	40°22'43.942"N	104°21'59.856"W	point
SEC.18/19-T05N-R62W (460'SETBACK)		6475.00	3.24	120.11	3317343.70	1382714.21	40°22'42.085"N	104°21'39.240"W	polygon

SURVEY PROGRAM - Ref Wellbore: ANTELOPE O24-19-18XRLNC PWB Ref Wellpath: ANTELOPE O24-19-18XRLNC PWP (REV-A.0)				
Start MD [ft]	End MD [ft]	Positional Uncertainty Model	Log Name/Comment	Wellbore
17.00	1550.00	Custom BHI NaviTrak (Standard Rotating+Axial Corr) (Rockies 0.03Gt model)		ANTELOPE O24-19-18XRLNC PWB
1550.00	16706.04	Custom BHI AutoTrak Curve (Axial Corr, Short spacing) (Rockies 0.03Gt model)		ANTELOPE O24-19-18XRLNC PWB



Planned Wellpath Report

ANTELOPE O24-19-18XRLNC PWP (REV-A.0)

Page 9 of 9



REFERENCE WELLPATH IDENTIFICATION			
Operator	BONANZA CREEK OIL COMPANY	Slot	SLOT#07 ANTELOPE O24-19-18XRLNC (225'FSL & 1288'FEL, SEC.19)
Area	COLORADO	Well	ANTELOPE O24-19-18XRLNC
Field	WELD COUNTY	Wellbore	ANTELOPE O24-19-18XRLNC PWB
Facility	SEC.19-T05N-R62W		

DESIGN COMMENTS				
MD [ft]	Inclination [°]	Azimuth [°]	TVD [ft]	Comment
17.00	0.000	253.471	17.00	Tie On
1700.00	0.000	253.471	1700.00	End of Tangent
2674.02	19.480	253.471	2655.37	End of Build (XS)
6102.88	19.480	253.471	5887.94	End of Tangent (XS)
7050.53	90.000	357.896	6475.00	End of 3D Arc (XS)
16706.04	90.000	357.896	6475.00	End of Tangent (XS)