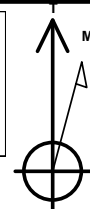




PROJECT DETAILS: Weld County, CO NAD 83

Geodetic System: US State Plane 1983
Datum: North American Datum 1983
Ellipsoid: GRS 1980
Zone: Colorado Northern Zone
System Datum: Mean Sea Level
Local North: True

Project: Weld County, CO NAD 83
Site: Critter Creek 15 SW Pad
Well: Critter Creek 15-6104XBW
Wellbore: OH
Design: Plan 1



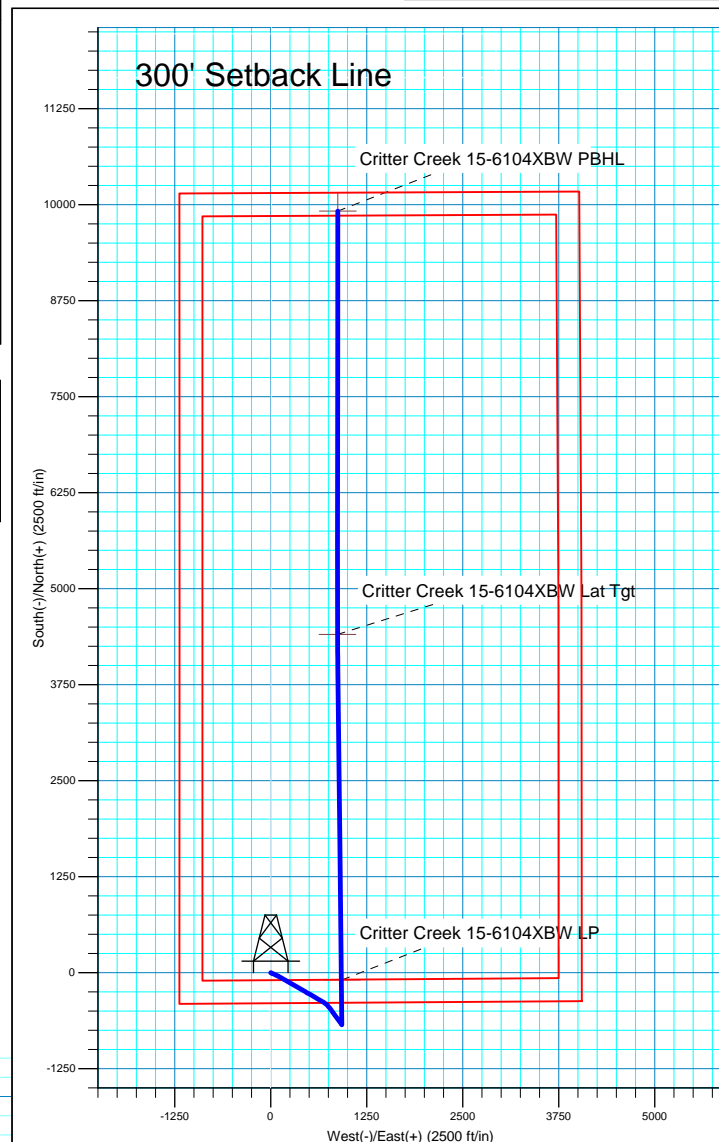
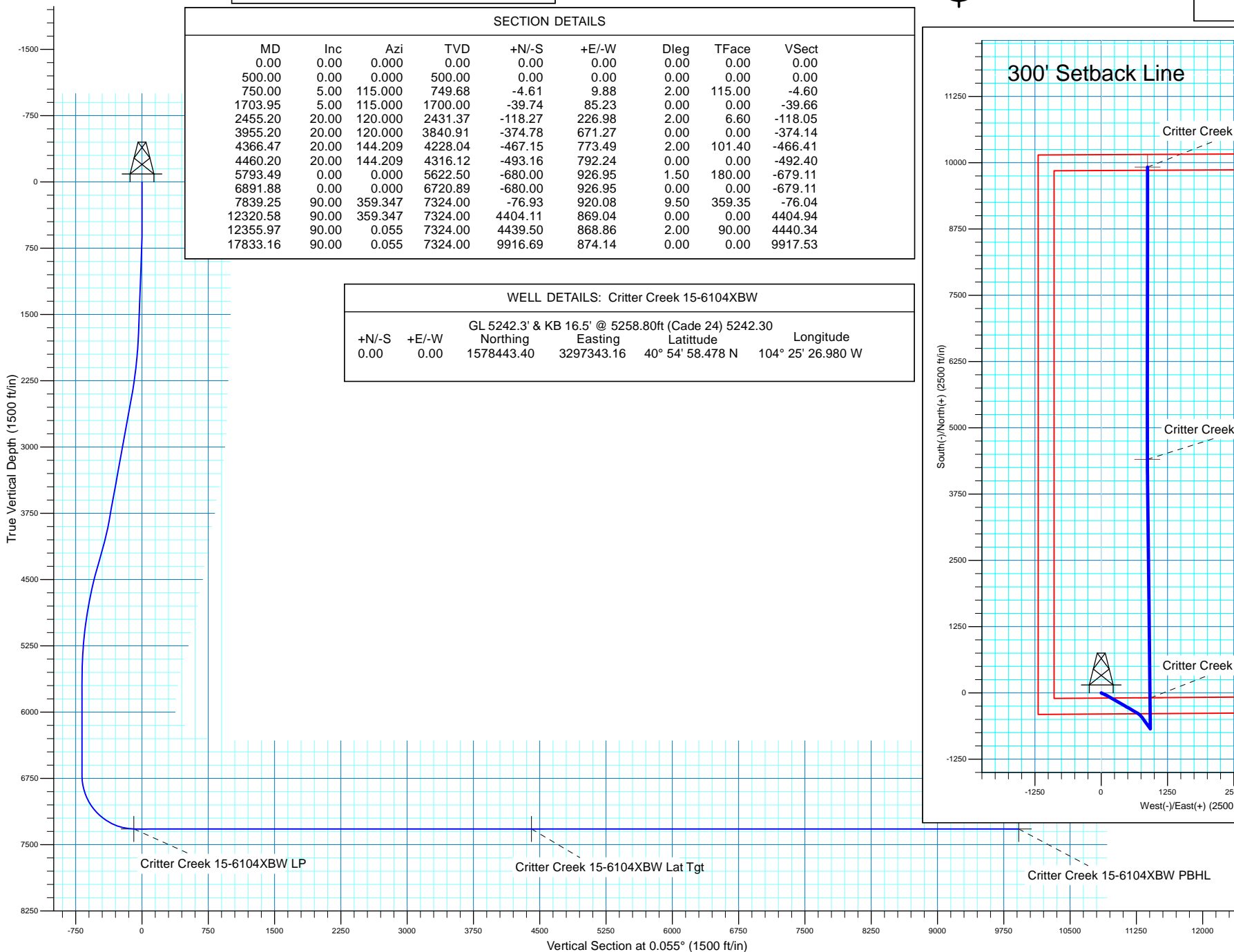
Azimuths to True North
Magnetic North: 8.25°

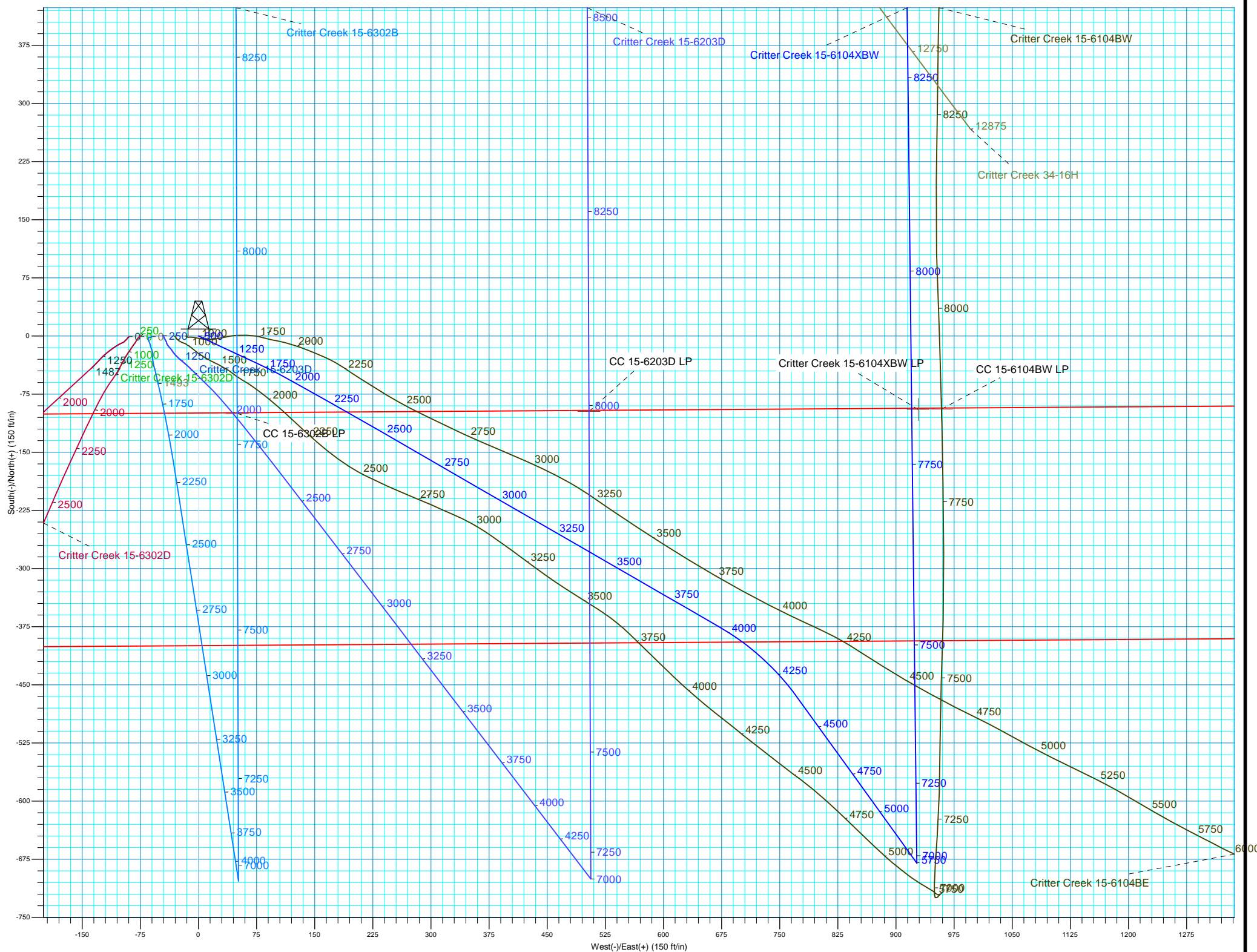
Magnetic Field
Strength: 52745.4nT
Dip Angle: 67.18°
Date: 9/11/2018
Model: HDGM

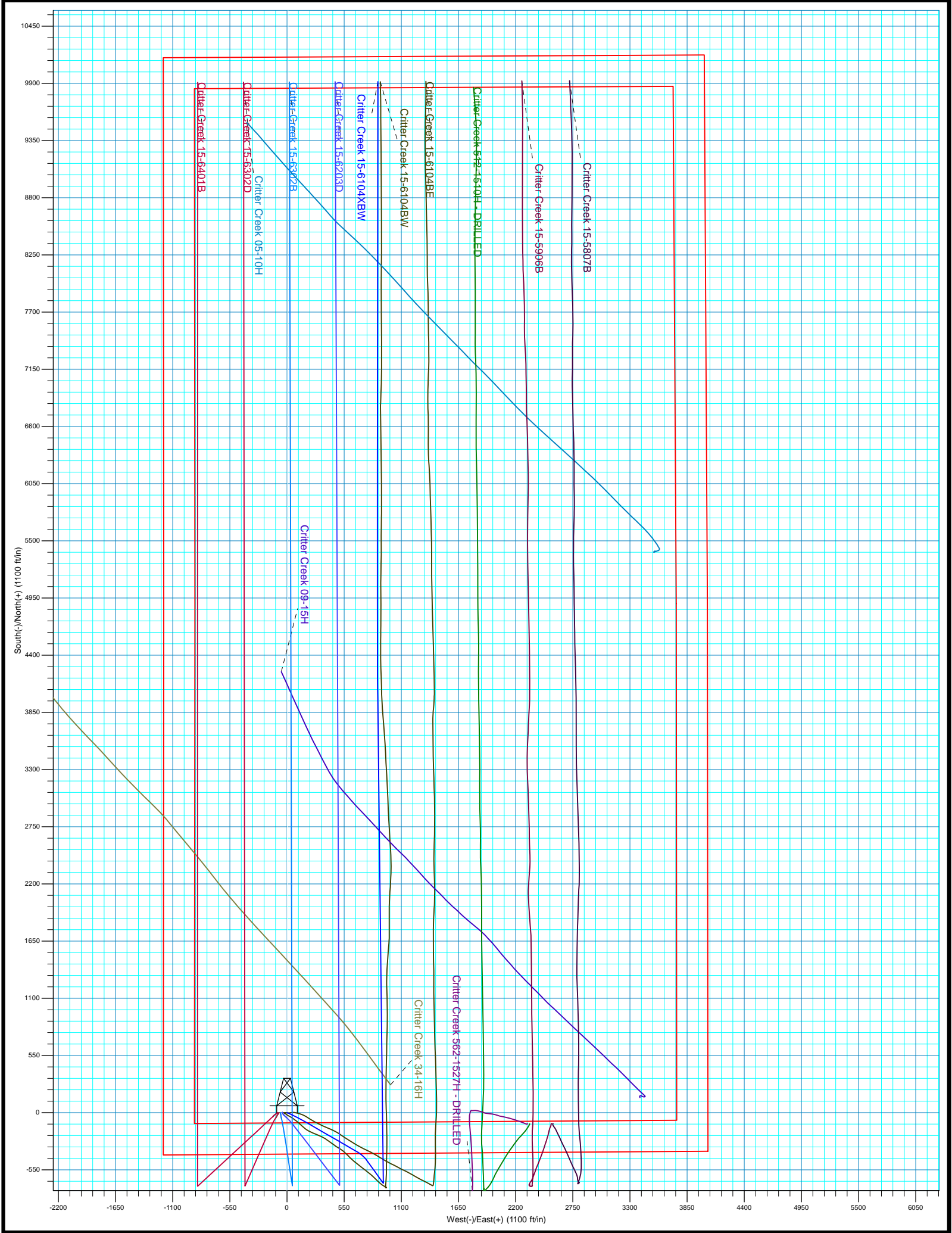


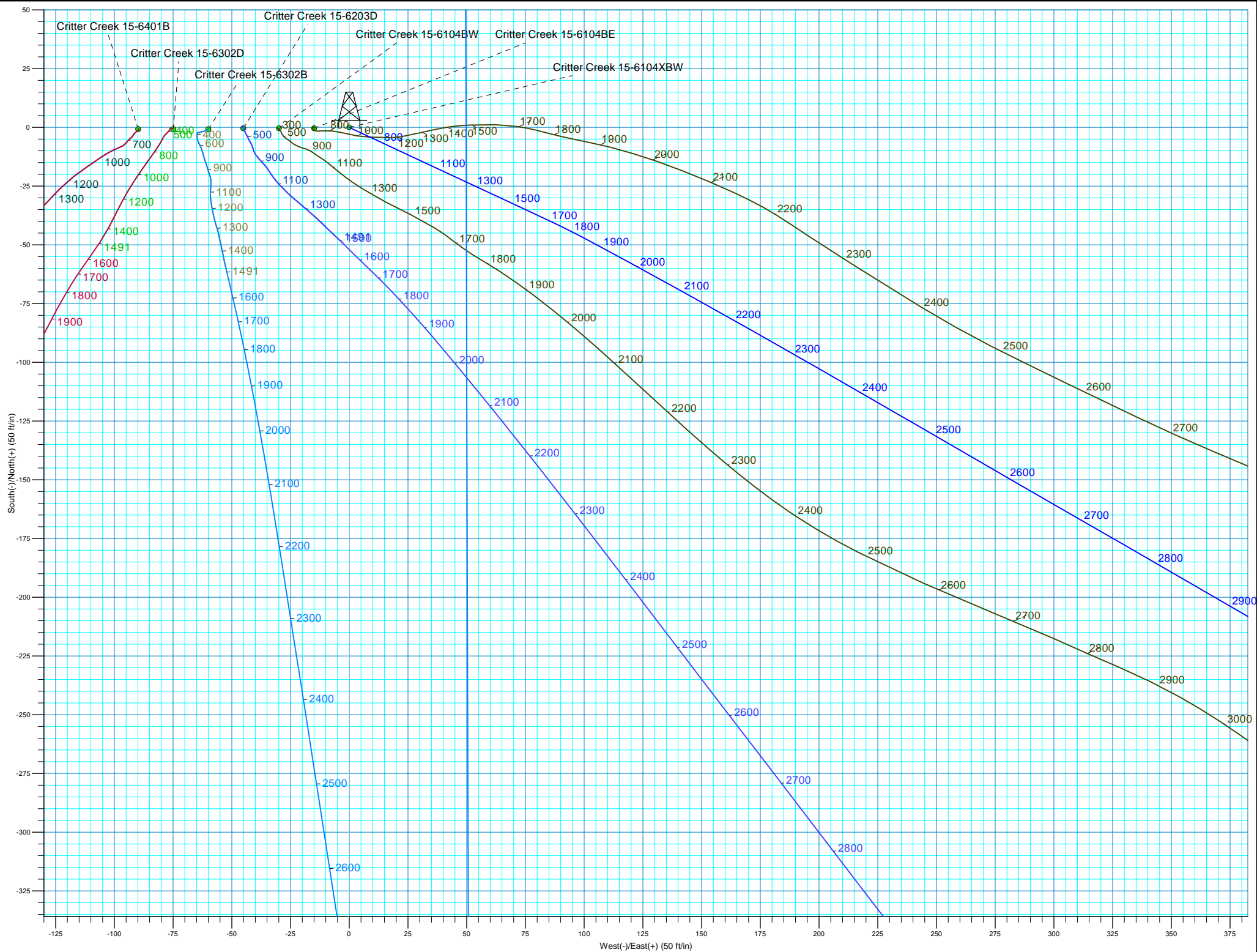
Plan: Plan 1 (Critter Creek 15-6104XBW/OH)

Created By: Seth Burstad











HighPoint Resources

Weld County, CO NAD 83
Crittter Creek 15 SW Pad
Crittter Creek 15-6104XBW

OH

Plan: Plan 1

Standard Planning Report

11 September, 2018



Database:	Casper District	Local Co-ordinate Reference:	Well Critter Creek 15-6104XBW
Company:	HighPoint Resources	TVD Reference:	GL 5242.3' & KB 16.5' @ 5258.80ft (Cade 24)
Project:	Weld County, CO NAD 83	MD Reference:	GL 5242.3' & KB 16.5' @ 5258.80ft (Cade 24)
Site:	Critter Creek 15 SW Pad	North Reference:	True
Well:	Critter Creek 15-6104XBW	Survey Calculation Method:	Minimum Curvature
Wellbore:	OH		
Design:	Plan 1		

Project	Weld County, CO NAD 83		
Map System:	US State Plane 1983	System Datum:	Mean Sea Level
Geo Datum:	North American Datum 1983		
Map Zone:	Colorado Northern Zone		

Site		Critter Creek 15 SW Pad, Site Center : Critter Creek 15-6104BE			
Site Position:		Northing:	1,578,441.59 usft	Latitude:	40° 54' 58.471 N
From:	Lat/Long	Easting:	3,297,253.35 usft	Longitude:	104° 25' 28.150 W
Position Uncertainty:	0.00 ft	Slot Radius:	13.200 in	Grid Convergence:	0.69 °

Well	Critter Creek 15-6104XBW, 400' FSL 1175' FWL Sec 15 T11N R63W					
Well Position	+N/-S	0.72 ft	Northing:	1,578,443.40 usft	Latitude:	40° 54' 58.478 N
	+E/-W	89.83 ft	Easting:	3,297,343.16 usft	Longitude:	104° 25' 26.980 W
Position Uncertainty		0.00 ft	Wellhead Elevation:	0.00 ft	Ground Level:	5,242.30 ft

Wellbore	OH				
Magnetics	Model Name	Sample Date	Declination (°)	Dip Angle (°)	Field Strength (nT)
	HDGM	9/11/2018	8.25	67.18	52,745

Design	Plan 1			
Audit Notes:				
Version:	Phase:	PLAN	Tie On Depth:	0.00
Vertical Section:	Depth From (TVD) (ft)	+N/-S (ft)	+E/-W (ft)	Direction (°)
	0.00	0.00	0.00	0.055

Plan Sections										
Measured Depth (ft)	Inclination (°)	Azimuth (°)	Vertical Depth (ft)	+N/-S (ft)	+E/-W (ft)	Dogleg Rate (°/100ft)	Build Rate (°/100ft)	Turn Rate (°/100ft)	TFO (°)	Target
0.00	0.00	0.000	0.00	0.00	0.00	0.00	0.00	0.00	0.00	
500.00	0.00	0.000	500.00	0.00	0.00	0.00	0.00	0.00	0.00	
750.00	5.00	115.000	749.68	-4.61	9.88	2.00	2.00	0.00	115.00	
1,703.95	5.00	115.000	1,700.00	-39.74	85.23	0.00	0.00	0.00	0.00	
2,455.20	20.00	120.000	2,431.37	-118.27	226.98	2.00	2.00	0.67	6.60	
3,955.20	20.00	120.000	3,840.91	-374.78	671.27	0.00	0.00	0.00	0.00	
4,366.47	20.00	144.209	4,228.04	-467.15	773.49	2.00	0.00	5.89	101.40	
4,460.20	20.00	144.209	4,316.12	-493.16	792.24	0.00	0.00	0.00	0.00	
5,793.49	0.00	0.000	5,622.50	-680.00	926.95	1.50	-1.50	0.00	180.00	
6,891.88	0.00	0.000	6,720.89	-680.00	926.95	0.00	0.00	0.00	0.00	
7,839.25	90.00	359.347	7,324.00	-76.93	920.08	9.50	9.50	-0.07	359.35	
12,320.58	90.00	359.347	7,324.00	4,404.11	869.04	0.00	0.00	0.00	0.00	Critter Creek 15-6104
12,355.97	90.00	0.055	7,324.00	4,439.51	868.86	2.00	0.00	2.00	90.00	Critter Creek 15-6104
17,833.16	90.00	0.055	7,324.00	9,916.69	874.14	0.00	0.00	0.00	0.00	Critter Creek 15-6104

Database:	Casper District	Local Co-ordinate Reference:	Well Critter Creek 15-6104XBW
Company:	HighPoint Resources	TVD Reference:	GL 5242.3' & KB 16.5' @ 5258.80ft (Cade 24)
Project:	Weld County, CO NAD 83	MD Reference:	GL 5242.3' & KB 16.5' @ 5258.80ft (Cade 24)
Site:	Critter Creek 15 SW Pad	North Reference:	True
Well:	Critter Creek 15-6104XBW	Survey Calculation Method:	Minimum Curvature
Wellbore:	OH		
Design:	Plan 1		

Planned Survey									
Measured Depth (ft)	Inclination (°)	Azimuth (°)	Vertical Depth (ft)	+N/-S (ft)	+E/-W (ft)	Vertical Section (ft)	Dogleg Rate (°/100ft)	Build Rate (°/100ft)	Turn Rate (°/100ft)
0.00	0.00	0.000	0.00	0.00	0.00	0.00	0.00	0.00	0.00
100.00	0.00	0.000	100.00	0.00	0.00	0.00	0.00	0.00	0.00
200.00	0.00	0.000	200.00	0.00	0.00	0.00	0.00	0.00	0.00
300.00	0.00	0.000	300.00	0.00	0.00	0.00	0.00	0.00	0.00
400.00	0.00	0.000	400.00	0.00	0.00	0.00	0.00	0.00	0.00
500.00	0.00	0.000	500.00	0.00	0.00	0.00	0.00	0.00	0.00
Start Build 2.00									
600.00	2.00	115.000	599.98	-0.74	1.58	-0.74	2.00	2.00	0.00
700.00	4.00	115.000	699.84	-2.95	6.32	-2.94	2.00	2.00	0.00
750.00	5.00	115.000	749.68	-4.61	9.88	-4.60	2.00	2.00	0.00
Start 953.95 hold at 750.00 MD									
800.00	5.00	115.000	799.49	-6.45	13.83	-6.44	0.00	0.00	0.00
900.00	5.00	115.000	899.11	-10.13	21.73	-10.11	0.00	0.00	0.00
1,000.00	5.00	115.000	998.73	-13.82	29.63	-13.79	0.00	0.00	0.00
1,100.00	5.00	115.000	1,098.35	-17.50	37.53	-17.46	0.00	0.00	0.00
1,200.00	5.00	115.000	1,197.97	-21.18	45.43	-21.14	0.00	0.00	0.00
1,300.00	5.00	115.000	1,297.59	-24.87	53.32	-24.81	0.00	0.00	0.00
1,400.00	5.00	115.000	1,397.21	-28.55	61.22	-28.49	0.00	0.00	0.00
1,500.00	5.00	115.000	1,496.83	-32.23	69.12	-32.17	0.00	0.00	0.00
1,600.00	5.00	115.000	1,596.45	-35.92	77.02	-35.84	0.00	0.00	0.00
1,700.00	5.00	115.000	1,696.07	-39.60	84.92	-39.52	0.00	0.00	0.00
1,703.95	5.00	115.000	1,700.00	-39.74	85.23	-39.66	0.00	0.00	0.00
Start DLS 2.00 TFO 6.60									
1,800.00	6.91	116.836	1,795.53	-44.12	94.18	-44.03	2.00	1.99	1.91
1,900.00	8.91	117.911	1,894.57	-50.46	106.39	-50.36	2.00	1.99	1.08
2,000.00	10.90	118.595	1,993.08	-58.61	121.54	-58.50	2.00	2.00	0.68
2,100.00	12.90	119.070	2,090.92	-68.57	139.60	-68.43	2.00	2.00	0.47
2,200.00	14.90	119.419	2,187.99	-80.31	160.56	-80.15	2.00	2.00	0.35
2,300.00	16.90	119.687	2,284.16	-93.82	184.39	-93.64	2.00	2.00	0.27
2,400.00	18.90	119.900	2,379.32	-109.09	211.05	-108.89	2.00	2.00	0.21
2,455.20	20.00	120.000	2,431.37	-118.27	226.98	-118.05	2.00	2.00	0.18
Start 1500.00 hold at 2455.20 MD									
2,500.00	20.00	120.000	2,473.46	-125.93	240.25	-125.70	0.00	0.00	0.00
2,600.00	20.00	120.000	2,567.43	-143.03	269.87	-142.77	0.00	0.00	0.00
2,700.00	20.00	120.000	2,661.40	-160.13	299.49	-159.84	0.00	0.00	0.00
2,800.00	20.00	120.000	2,755.37	-177.23	329.10	-176.91	0.00	0.00	0.00
2,900.00	20.00	120.000	2,849.34	-194.33	358.72	-193.99	0.00	0.00	0.00
3,000.00	20.00	120.000	2,943.31	-211.43	388.34	-211.06	0.00	0.00	0.00
3,100.00	20.00	120.000	3,037.28	-228.53	417.96	-228.13	0.00	0.00	0.00
3,200.00	20.00	120.000	3,131.25	-245.63	447.58	-245.20	0.00	0.00	0.00
3,300.00	20.00	120.000	3,225.22	-262.74	477.20	-262.28	0.00	0.00	0.00
3,400.00	20.00	120.000	3,319.19	-279.84	506.82	-279.35	0.00	0.00	0.00
3,500.00	20.00	120.000	3,413.16	-296.94	536.44	-296.42	0.00	0.00	0.00
3,600.00	20.00	120.000	3,507.13	-314.04	566.06	-313.50	0.00	0.00	0.00
3,700.00	20.00	120.000	3,601.10	-331.14	595.68	-330.57	0.00	0.00	0.00
3,800.00	20.00	120.000	3,695.07	-348.24	625.30	-347.64	0.00	0.00	0.00
3,900.00	20.00	120.000	3,789.03	-365.34	654.92	-364.71	0.00	0.00	0.00
3,955.20	20.00	120.000	3,840.91	-374.78	671.27	-374.14	0.00	0.00	0.00
Start DLS 2.00 TFO 101.40									
4,000.00	19.84	122.588	3,883.03	-382.71	684.31	-382.05	2.00	-0.35	5.78
4,100.00	19.63	128.479	3,977.16	-402.30	711.76	-401.62	2.00	-0.22	5.89
4,200.00	19.60	134.439	4,071.37	-424.50	736.89	-423.79	2.00	-0.02	5.96
4,300.00	19.78	140.355	4,165.53	-449.27	759.66	-448.54	2.00	0.17	5.92

Database:	Casper District	Local Co-ordinate Reference:	Well Critter Creek 15-6104XBW
Company:	HighPoint Resources	TVD Reference:	GL 5242.3' & KB 16.5' @ 5258.80ft (Cade 24)
Project:	Weld County, CO NAD 83	MD Reference:	GL 5242.3' & KB 16.5' @ 5258.80ft (Cade 24)
Site:	Critter Creek 15 SW Pad	North Reference:	True
Well:	Critter Creek 15-6104XBW	Survey Calculation Method:	Minimum Curvature
Wellbore:	OH		
Design:	Plan 1		

Planned Survey									
Measured Depth (ft)	Inclination (°)	Azimuth (°)	Vertical Depth (ft)	+N/-S (ft)	+E/-W (ft)	Vertical Section (ft)	Dogleg Rate (°/100ft)	Build Rate (°/100ft)	Turn Rate (°/100ft)
4,366.47	20.00	144.209	4,228.04	-467.15	773.49	-466.41	2.00	0.33	5.80
Start 93.73 hold at 4366.47 MD									
4,400.00	20.00	144.209	4,259.55	-476.46	780.20	-475.71	0.00	0.00	0.00
4,460.20	20.00	144.209	4,316.12	-493.16	792.24	-492.40	0.00	0.00	0.00
Start Drop -1.50									
4,500.00	19.40	144.209	4,353.59	-504.04	800.08	-503.27	1.50	-1.50	0.00
4,600.00	17.90	144.209	4,448.33	-529.98	818.79	-529.20	1.50	-1.50	0.00
4,700.00	16.40	144.209	4,543.88	-553.90	836.03	-553.10	1.50	-1.50	0.00
4,800.00	14.90	144.209	4,640.17	-575.79	851.81	-574.97	1.50	-1.50	0.00
4,900.00	13.40	144.209	4,737.13	-595.62	866.11	-594.79	1.50	-1.50	0.00
5,000.00	11.90	144.209	4,834.70	-613.39	878.92	-612.54	1.50	-1.50	0.00
5,100.00	10.40	144.209	4,932.81	-629.07	890.23	-628.22	1.50	-1.50	0.00
5,200.00	8.90	144.209	5,031.39	-642.68	900.04	-641.81	1.50	-1.50	0.00
5,300.00	7.40	144.209	5,130.38	-654.18	908.33	-653.31	1.50	-1.50	0.00
5,400.00	5.90	144.209	5,229.70	-663.57	915.11	-662.70	1.50	-1.50	0.00
5,500.00	4.40	144.209	5,329.29	-670.86	920.36	-669.97	1.50	-1.50	0.00
5,600.00	2.90	144.209	5,429.09	-676.03	924.08	-675.14	1.50	-1.50	0.00
5,700.00	1.40	144.209	5,529.02	-679.07	926.28	-678.18	1.50	-1.50	0.00
5,793.49	0.00	0.000	5,622.50	-680.00	926.95	-679.11	1.50	-1.50	0.00
Start 1098.39 hold at 5793.49 MD									
5,800.00	0.00	0.000	5,629.01	-680.00	926.95	-679.11	0.00	0.00	0.00
5,900.00	0.00	0.000	5,729.01	-680.00	926.95	-679.11	0.00	0.00	0.00
6,000.00	0.00	0.000	5,829.01	-680.00	926.95	-679.11	0.00	0.00	0.00
6,100.00	0.00	0.000	5,929.01	-680.00	926.95	-679.11	0.00	0.00	0.00
6,200.00	0.00	0.000	6,029.01	-680.00	926.95	-679.11	0.00	0.00	0.00
6,300.00	0.00	0.000	6,129.01	-680.00	926.95	-679.11	0.00	0.00	0.00
6,400.00	0.00	0.000	6,229.01	-680.00	926.95	-679.11	0.00	0.00	0.00
6,500.00	0.00	0.000	6,329.01	-680.00	926.95	-679.11	0.00	0.00	0.00
6,600.00	0.00	0.000	6,429.01	-680.00	926.95	-679.11	0.00	0.00	0.00
6,700.00	0.00	0.000	6,529.01	-680.00	926.95	-679.11	0.00	0.00	0.00
6,800.00	0.00	0.000	6,629.01	-680.00	926.95	-679.11	0.00	0.00	0.00
6,891.88	0.00	0.000	6,720.89	-680.00	926.95	-679.11	0.00	0.00	0.00
Start DLS 9.50 TFO 359.35									
6,900.00	0.77	359.347	6,729.01	-679.95	926.95	-679.06	9.50	9.50	0.00
7,000.00	10.27	359.347	6,828.43	-670.34	926.84	-669.45	9.50	9.50	0.00
7,100.00	19.77	359.347	6,924.90	-644.45	926.55	-643.56	9.50	9.50	0.00
7,200.00	29.27	359.347	7,015.78	-603.00	926.07	-602.11	9.50	9.50	0.00
7,300.00	38.77	359.347	7,098.57	-547.12	925.44	-546.23	9.50	9.50	0.00
7,400.00	48.27	359.347	7,170.99	-478.34	924.65	-477.45	9.50	9.50	0.00
7,500.00	57.77	359.347	7,231.08	-398.55	923.74	-397.66	9.50	9.50	0.00
7,600.00	67.27	359.347	7,277.17	-309.94	922.73	-309.05	9.50	9.50	0.00
7,700.00	76.77	359.347	7,308.00	-214.94	921.65	-214.05	9.50	9.50	0.00
7,800.00	86.27	359.347	7,322.73	-116.15	920.53	-115.26	9.50	9.50	0.00
7,839.25	90.00	359.347	7,324.00	-76.93	920.08	-76.04	9.50	9.50	0.00
Start 4481.33 hold at 7839.25 MD									
7,900.00	90.00	359.347	7,324.00	-16.18	919.39	-15.30	0.00	0.00	0.00
8,000.00	90.00	359.347	7,324.00	83.81	918.25	84.69	0.00	0.00	0.00
8,100.00	90.00	359.347	7,324.00	183.80	917.11	184.69	0.00	0.00	0.00
8,200.00	90.00	359.347	7,324.00	283.80	915.97	284.68	0.00	0.00	0.00
8,300.00	90.00	359.347	7,324.00	383.79	914.83	384.67	0.00	0.00	0.00
8,400.00	90.00	359.347	7,324.00	483.79	913.69	484.66	0.00	0.00	0.00
8,500.00	90.00	359.347	7,324.00	583.78	912.56	584.65	0.00	0.00	0.00
8,600.00	90.00	359.347	7,324.00	683.77	911.42	684.65	0.00	0.00	0.00

Database:	Casper District	Local Co-ordinate Reference:	Well Critter Creek 15-6104XBW
Company:	HighPoint Resources	TVD Reference:	GL 5242.3' & KB 16.5' @ 5258.80ft (Cade 24)
Project:	Weld County, CO NAD 83	MD Reference:	GL 5242.3' & KB 16.5' @ 5258.80ft (Cade 24)
Site:	Critter Creek 15 SW Pad	North Reference:	True
Well:	Critter Creek 15-6104XBW	Survey Calculation Method:	Minimum Curvature
Wellbore:	OH		
Design:	Plan 1		

Planned Survey									
Measured Depth (ft)	Inclination (°)	Azimuth (°)	Vertical Depth (ft)	+N/-S (ft)	+E/-W (ft)	Vertical Section (ft)	Dogleg Rate (°/100ft)	Build Rate (°/100ft)	Turn Rate (°/100ft)
8,700.00	90.00	359.347	7,324.00	783.77	910.28	784.64	0.00	0.00	0.00
8,800.00	90.00	359.347	7,324.00	883.76	909.14	884.63	0.00	0.00	0.00
8,900.00	90.00	359.347	7,324.00	983.75	908.00	984.62	0.00	0.00	0.00
9,000.00	90.00	359.347	7,324.00	1,083.75	906.86	1,084.62	0.00	0.00	0.00
9,100.00	90.00	359.347	7,324.00	1,183.74	905.72	1,184.61	0.00	0.00	0.00
9,200.00	90.00	359.347	7,324.00	1,283.73	904.58	1,284.60	0.00	0.00	0.00
9,300.00	90.00	359.347	7,324.00	1,383.73	903.44	1,384.59	0.00	0.00	0.00
9,400.00	90.00	359.347	7,324.00	1,483.72	902.30	1,484.59	0.00	0.00	0.00
9,500.00	90.00	359.347	7,324.00	1,583.71	901.17	1,584.58	0.00	0.00	0.00
9,600.00	90.00	359.347	7,324.00	1,683.71	900.03	1,684.57	0.00	0.00	0.00
9,700.00	90.00	359.347	7,324.00	1,783.70	898.89	1,784.56	0.00	0.00	0.00
9,800.00	90.00	359.347	7,324.00	1,883.69	897.75	1,884.56	0.00	0.00	0.00
9,900.00	90.00	359.347	7,324.00	1,983.69	896.61	1,984.55	0.00	0.00	0.00
10,000.00	90.00	359.347	7,324.00	2,083.68	895.47	2,084.54	0.00	0.00	0.00
10,100.00	90.00	359.347	7,324.00	2,183.68	894.33	2,184.53	0.00	0.00	0.00
10,200.00	90.00	359.347	7,324.00	2,283.67	893.19	2,284.53	0.00	0.00	0.00
10,300.00	90.00	359.347	7,324.00	2,383.66	892.05	2,384.52	0.00	0.00	0.00
10,400.00	90.00	359.347	7,324.00	2,483.66	890.91	2,484.51	0.00	0.00	0.00
10,500.00	90.00	359.347	7,324.00	2,583.65	889.78	2,584.50	0.00	0.00	0.00
10,600.00	90.00	359.347	7,324.00	2,683.64	888.64	2,684.49	0.00	0.00	0.00
10,700.00	90.00	359.347	7,324.00	2,783.64	887.50	2,784.49	0.00	0.00	0.00
10,800.00	90.00	359.347	7,324.00	2,883.63	886.36	2,884.48	0.00	0.00	0.00
10,900.00	90.00	359.347	7,324.00	2,983.62	885.22	2,984.47	0.00	0.00	0.00
11,000.00	90.00	359.347	7,324.00	3,083.62	884.08	3,084.46	0.00	0.00	0.00
11,100.00	90.00	359.347	7,324.00	3,183.61	882.94	3,184.46	0.00	0.00	0.00
11,200.00	90.00	359.347	7,324.00	3,283.60	881.80	3,284.45	0.00	0.00	0.00
11,300.00	90.00	359.347	7,324.00	3,383.60	880.66	3,384.44	0.00	0.00	0.00
11,400.00	90.00	359.347	7,324.00	3,483.59	879.53	3,484.43	0.00	0.00	0.00
11,500.00	90.00	359.347	7,324.00	3,583.58	878.39	3,584.43	0.00	0.00	0.00
11,600.00	90.00	359.347	7,324.00	3,683.58	877.25	3,684.42	0.00	0.00	0.00
11,700.00	90.00	359.347	7,324.00	3,783.57	876.11	3,784.41	0.00	0.00	0.00
11,800.00	90.00	359.347	7,324.00	3,883.57	874.97	3,884.40	0.00	0.00	0.00
11,900.00	90.00	359.347	7,324.00	3,983.56	873.83	3,984.40	0.00	0.00	0.00
12,000.00	90.00	359.347	7,324.00	4,083.55	872.69	4,084.39	0.00	0.00	0.00
12,100.00	90.00	359.347	7,324.00	4,183.55	871.55	4,184.38	0.00	0.00	0.00
12,200.00	90.00	359.347	7,324.00	4,283.54	870.41	4,284.37	0.00	0.00	0.00
12,300.00	90.00	359.347	7,324.00	4,383.53	869.27	4,384.37	0.00	0.00	0.00
12,320.58	90.00	359.347	7,324.00	4,404.11	869.04	4,404.94	0.00	0.00	0.00
Start DLS 2.00 TFO 90.00									
12,355.97	90.00	0.055	7,324.00	4,439.51	868.86	4,440.34	2.00	0.00	2.00
Start 5477.19 hold at 12355.97 MD									
12,400.00	90.00	0.055	7,324.00	4,483.53	868.90	4,484.36	0.00	0.00	0.00
12,500.00	90.00	0.055	7,324.00	4,583.53	868.99	4,584.36	0.00	0.00	0.00
12,600.00	90.00	0.055	7,324.00	4,683.53	869.09	4,684.36	0.00	0.00	0.00
12,700.00	90.00	0.055	7,324.00	4,783.53	869.19	4,784.36	0.00	0.00	0.00
12,800.00	90.00	0.055	7,324.00	4,883.53	869.28	4,884.36	0.00	0.00	0.00
12,900.00	90.00	0.055	7,324.00	4,983.53	869.38	4,984.36	0.00	0.00	0.00
13,000.00	90.00	0.055	7,324.00	5,083.53	869.48	5,084.36	0.00	0.00	0.00
13,100.00	90.00	0.055	7,324.00	5,183.53	869.57	5,184.36	0.00	0.00	0.00
13,200.00	90.00	0.055	7,324.00	5,283.53	869.67	5,284.36	0.00	0.00	0.00
13,300.00	90.00	0.055	7,324.00	5,383.53	869.77	5,384.36	0.00	0.00	0.00
13,400.00	90.00	0.055	7,324.00	5,483.53	869.86	5,484.36	0.00	0.00	0.00
13,500.00	90.00	0.055	7,324.00	5,583.53	869.96	5,584.36	0.00	0.00	0.00
13,600.00	90.00	0.055	7,324.00	5,683.53	870.06	5,684.36	0.00	0.00	0.00

Database:	Casper District	Local Co-ordinate Reference:	Well Critter Creek 15-6104XBW
Company:	HighPoint Resources	TVD Reference:	GL 5242.3' & KB 16.5' @ 5258.80ft (Cade 24)
Project:	Weld County, CO NAD 83	MD Reference:	GL 5242.3' & KB 16.5' @ 5258.80ft (Cade 24)
Site:	Critter Creek 15 SW Pad	North Reference:	True
Well:	Critter Creek 15-6104XBW	Survey Calculation Method:	Minimum Curvature
Wellbore:	OH		
Design:	Plan 1		

Planned Survey									
Measured Depth (ft)	Inclination (°)	Azimuth (°)	Vertical Depth (ft)	+N/-S (ft)	+E/-W (ft)	Vertical Section (ft)	Dogleg Rate (°/100ft)	Build Rate (°/100ft)	Turn Rate (°/100ft)
13,700.00	90.00	0.055	7,324.00	5,783.53	870.15	5,784.36	0.00	0.00	0.00
13,800.00	90.00	0.055	7,324.00	5,883.53	870.25	5,884.36	0.00	0.00	0.00
13,900.00	90.00	0.055	7,324.00	5,983.53	870.35	5,984.36	0.00	0.00	0.00
14,000.00	90.00	0.055	7,324.00	6,083.53	870.44	6,084.36	0.00	0.00	0.00
14,100.00	90.00	0.055	7,324.00	6,183.53	870.54	6,184.36	0.00	0.00	0.00
14,200.00	90.00	0.055	7,324.00	6,283.53	870.64	6,284.36	0.00	0.00	0.00
14,300.00	90.00	0.055	7,324.00	6,383.53	870.73	6,384.36	0.00	0.00	0.00
14,400.00	90.00	0.055	7,324.00	6,483.53	870.83	6,484.36	0.00	0.00	0.00
14,500.00	90.00	0.055	7,324.00	6,583.53	870.93	6,584.36	0.00	0.00	0.00
14,600.00	90.00	0.055	7,324.00	6,683.53	871.02	6,684.36	0.00	0.00	0.00
14,700.00	90.00	0.055	7,324.00	6,783.53	871.12	6,784.36	0.00	0.00	0.00
14,800.00	90.00	0.055	7,324.00	6,883.53	871.22	6,884.36	0.00	0.00	0.00
14,900.00	90.00	0.055	7,324.00	6,983.53	871.31	6,984.36	0.00	0.00	0.00
15,000.00	90.00	0.055	7,324.00	7,083.53	871.41	7,084.36	0.00	0.00	0.00
15,100.00	90.00	0.055	7,324.00	7,183.53	871.50	7,184.36	0.00	0.00	0.00
15,200.00	90.00	0.055	7,324.00	7,283.53	871.60	7,284.36	0.00	0.00	0.00
15,300.00	90.00	0.055	7,324.00	7,383.53	871.70	7,384.36	0.00	0.00	0.00
15,400.00	90.00	0.055	7,324.00	7,483.53	871.79	7,484.36	0.00	0.00	0.00
15,500.00	90.00	0.055	7,324.00	7,583.53	871.89	7,584.36	0.00	0.00	0.00
15,600.00	90.00	0.055	7,324.00	7,683.53	871.99	7,684.36	0.00	0.00	0.00
15,700.00	90.00	0.055	7,324.00	7,783.53	872.08	7,784.36	0.00	0.00	0.00
15,800.00	90.00	0.055	7,324.00	7,883.53	872.18	7,884.36	0.00	0.00	0.00
15,900.00	90.00	0.055	7,324.00	7,983.53	872.28	7,984.36	0.00	0.00	0.00
16,000.00	90.00	0.055	7,324.00	8,083.53	872.37	8,084.36	0.00	0.00	0.00
16,100.00	90.00	0.055	7,324.00	8,183.53	872.47	8,184.36	0.00	0.00	0.00
16,200.00	90.00	0.055	7,324.00	8,283.53	872.57	8,284.36	0.00	0.00	0.00
16,300.00	90.00	0.055	7,324.00	8,383.53	872.66	8,384.36	0.00	0.00	0.00
16,400.00	90.00	0.055	7,324.00	8,483.53	872.76	8,484.36	0.00	0.00	0.00
16,500.00	90.00	0.055	7,324.00	8,583.53	872.86	8,584.36	0.00	0.00	0.00
16,600.00	90.00	0.055	7,324.00	8,683.53	872.95	8,684.36	0.00	0.00	0.00
16,700.00	90.00	0.055	7,324.00	8,783.53	873.05	8,784.36	0.00	0.00	0.00
16,800.00	90.00	0.055	7,324.00	8,883.53	873.15	8,884.36	0.00	0.00	0.00
16,900.00	90.00	0.055	7,324.00	8,983.53	873.24	8,984.36	0.00	0.00	0.00
17,000.00	90.00	0.055	7,324.00	9,083.53	873.34	9,084.36	0.00	0.00	0.00
17,100.00	90.00	0.055	7,324.00	9,183.53	873.44	9,184.36	0.00	0.00	0.00
17,200.00	90.00	0.055	7,324.00	9,283.53	873.53	9,284.36	0.00	0.00	0.00
17,300.00	90.00	0.055	7,324.00	9,383.53	873.63	9,384.36	0.00	0.00	0.00
17,400.00	90.00	0.055	7,324.00	9,483.53	873.73	9,484.36	0.00	0.00	0.00
17,500.00	90.00	0.055	7,324.00	9,583.53	873.82	9,584.36	0.00	0.00	0.00
17,600.00	90.00	0.055	7,324.00	9,683.53	873.92	9,684.36	0.00	0.00	0.00
17,700.00	90.00	0.055	7,324.00	9,783.53	874.02	9,784.36	0.00	0.00	0.00
17,800.00	90.00	0.055	7,324.00	9,883.53	874.11	9,884.36	0.00	0.00	0.00
17,833.16	90.00	0.055	7,324.00	9,916.69	874.14	9,917.53	0.00	0.00	0.00
TD at 17833.16									

Database:	Casper District	Local Co-ordinate Reference:	Well Critter Creek 15-6104XBW
Company:	HighPoint Resources	TVD Reference:	GL 5242.3' & KB 16.5' @ 5258.80ft (Cade 24)
Project:	Weld County, CO NAD 83	MD Reference:	GL 5242.3' & KB 16.5' @ 5258.80ft (Cade 24)
Site:	Critter Creek 15 SW Pad	North Reference:	True
Well:	Critter Creek 15-6104XBW	Survey Calculation Method:	Minimum Curvature
Wellbore:	OH		
Design:	Plan 1		

Design Targets									
Target Name									
- hit/miss target	Dip Angle	Dip Dir.	TVD	+N/-S	+E/-W	Northing	Easting	Latitude	Longitude
- Shape	(°)	(°)	(ft)	(ft)	(ft)	(usft)	(usft)		
Critter Creek 15-6104XE - plan hits target center - Point	0.00	0.000	7,324.00	9,916.69	874.14	1,588,369.95	3,298,096.93	40° 56' 36.460 N	104° 25' 15.589 W
Critter Creek 15-6104XE - plan misses target center by 8.39ft at 7821.39ft MD (7323.74 TVD, -94.79 N, 920.28 E) - Point	0.00	0.000	7,324.00	-94.70	928.67	1,578,359.97	3,298,272.91	40° 54' 57.542 N	104° 25' 14.884 W
Critter Creek 15-6104XE - plan hits target center - Point	0.00	0.000	7,324.00	4,404.11	869.04	1,582,857.72	3,298,158.70	40° 55' 41.993 N	104° 25' 15.658 W

Plan Annotations				
Measured Depth	Vertical Depth	Local Coordinates		Comment
(ft)	(ft)	+N/-S (ft)	+E/-W (ft)	
500.00	500.00	0.00	0.00	Start Build 2.00
750.00	749.68	-4.61	9.88	Start 953.95 hold at 750.00 MD
1,703.95	1,700.00	-39.74	85.23	Start DLS 2.00 TFO 6.60
2,455.20	2,431.37	-118.27	226.98	Start 1500.00 hold at 2455.20 MD
3,955.20	3,840.91	-374.78	671.27	Start DLS 2.00 TFO 101.40
4,366.47	4,228.04	-467.15	773.49	Start 93.73 hold at 4366.47 MD
4,460.20	4,316.12	-493.16	792.24	Start Drop -1.50
5,793.49	5,622.50	-680.00	926.95	Start 1098.39 hold at 5793.49 MD
6,891.88	6,720.89	-680.00	926.95	Start DLS 9.50 TFO 359.35
7,839.25	7,324.00	-76.93	920.08	Start 4481.33 hold at 7839.25 MD
12,320.58	7,324.00	4,404.11	869.04	Start DLS 2.00 TFO 90.00
12,355.97	7,324.00	4,439.51	868.86	Start 5477.19 hold at 12355.97 MD
17,833.16	7,324.00	9,916.69	874.14	TD at 17833.16