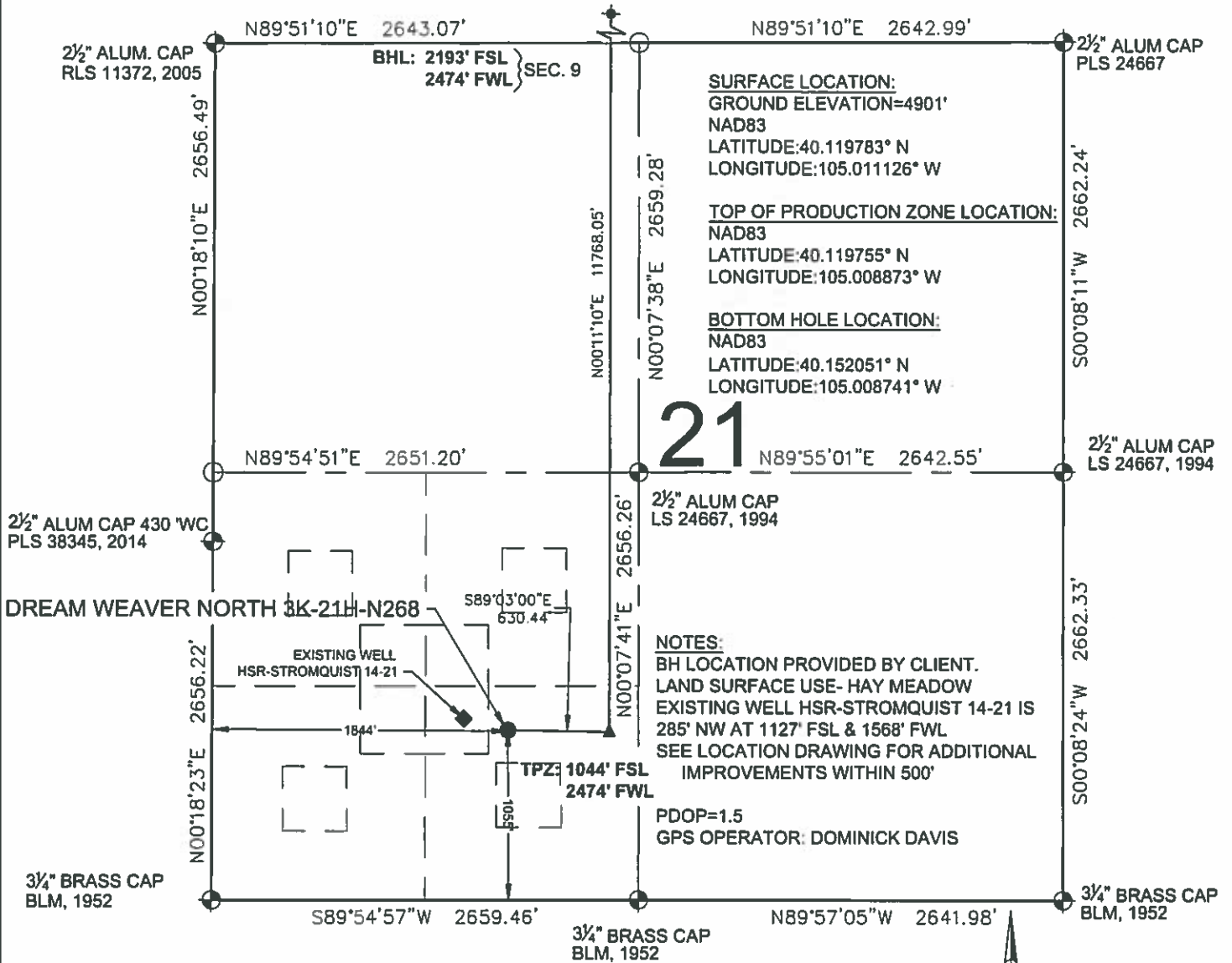


DREAM WEAVER NORTH 3K-21H-N268 WELL LOCATION EXHIBIT



SURFACE LOCATION:
GROUND ELEVATION=4901'
NAD83
LATITUDE:40.119783° N
LONGITUDE:105.011126° W

TOP OF PRODUCTION ZONE LOCATION:
NAD83
LATITUDE:40.119755° N
LONGITUDE:105.008873° W

BOTTOM HOLE LOCATION:
NAD83
LATITUDE:40.152051° N
LONGITUDE:105.008741° W

NOTES:
BH LOCATION PROVIDED BY CLIENT.
LAND SURFACE USE- HAY MEADOW
EXISTING WELL HSR-STROMQUIST 14-21 IS
285' NW AT 1127' FSL & 1568' FWL
SEE LOCATION DRAWING FOR ADDITIONAL
IMPROVEMENTS WITHIN 500'

PDOP=1.5
GPS OPERATOR: DOMINICK DAVIS

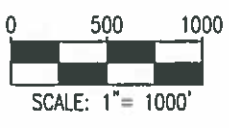
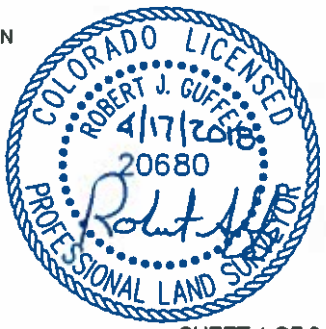
- LEGEND**
- ⊕ = EXISTING MONUMENT
 - = CALCULATED POSITION
 - = PROPOSED WELL
 - ◆ = EXISTING WELL
 - ⬆ = BOTTOM HOLE
 - ▲ = TOP OF PRODUCTION ZONE
 - TPZ = TOP OF PRODUCTION ZONE
 - BHL = BOTTOM HOLE LOCATION
 - WC = WITNESS CORNER

- NOTES:**
- THIS FIELD SURVEY CONFORMS TO THE MINIMUM STANDARDS SET BY THE C.O.G.C.C., RULE NO. 215
 - ALL DISTANCES AND BEARINGS SHOWN HEREON ARE GROUND VALUES AS GPS MEASURED IN THE FIELD, WITH TIES TO WELLS MEASURED PERPENDICULAR TO LINES SHOWN HEREON. THIS LOW DISTORTION PROJECTION (LDP) IS BASED ON THE NORTH AMERICAN DATUM OF 1983, U.S. SURVEY FOOT WITH A LATITUDE ORIGIN OF 40.131498°N, A CENTRAL MERIDIAN LONGITUDE OF 104.998741°W, AND A SCALE FACTOR ON THE CENTRAL MERIDIAN OF 1.000232 (EXACT). THE LDP BASIS OF BEARINGS IS GEODETIC NORTH.
 - FIELD VERIFICATION OF MONUMENTS COMPLETED WITHIN 1 YEAR OF SIGNATURE DATE, UNLESS OTHERWISE NOTED.

**WELL DREAM WEAVER NORTH 3K-21H-N268
TO BE LOCATED 1055' FSL & 1844' FWL**

I, ROBERT J. GUFFEY, A LICENSED PROFESSIONAL LAND SURVEYOR IN THE STATE OF COLORADO, DO HEREBY STATE TO **CRESTONE PEAK RESOURCES** THAT THE WELL LOCATION EXHIBIT SHOWN HEREON WAS PREPARED BY ME OR UNDER MY DIRECT SUPERVISION AND THE DRAWING SHOWN HEREON ACCURATELY DEPICTS THE PROPOSED LOCATION OF THE WELL. THIS EXHIBIT MEETS THE REQUIREMENTS OF A GIS LAND POSITION AS DEFINED BY SECTION 38-51-102 (7.5) C.R.S. AND AS SUCH PER SECTION 38-51-109.3 C.R.S. CANNOT BE RELIED UPON TO DETERMINE OWNERSHIP.

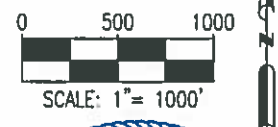
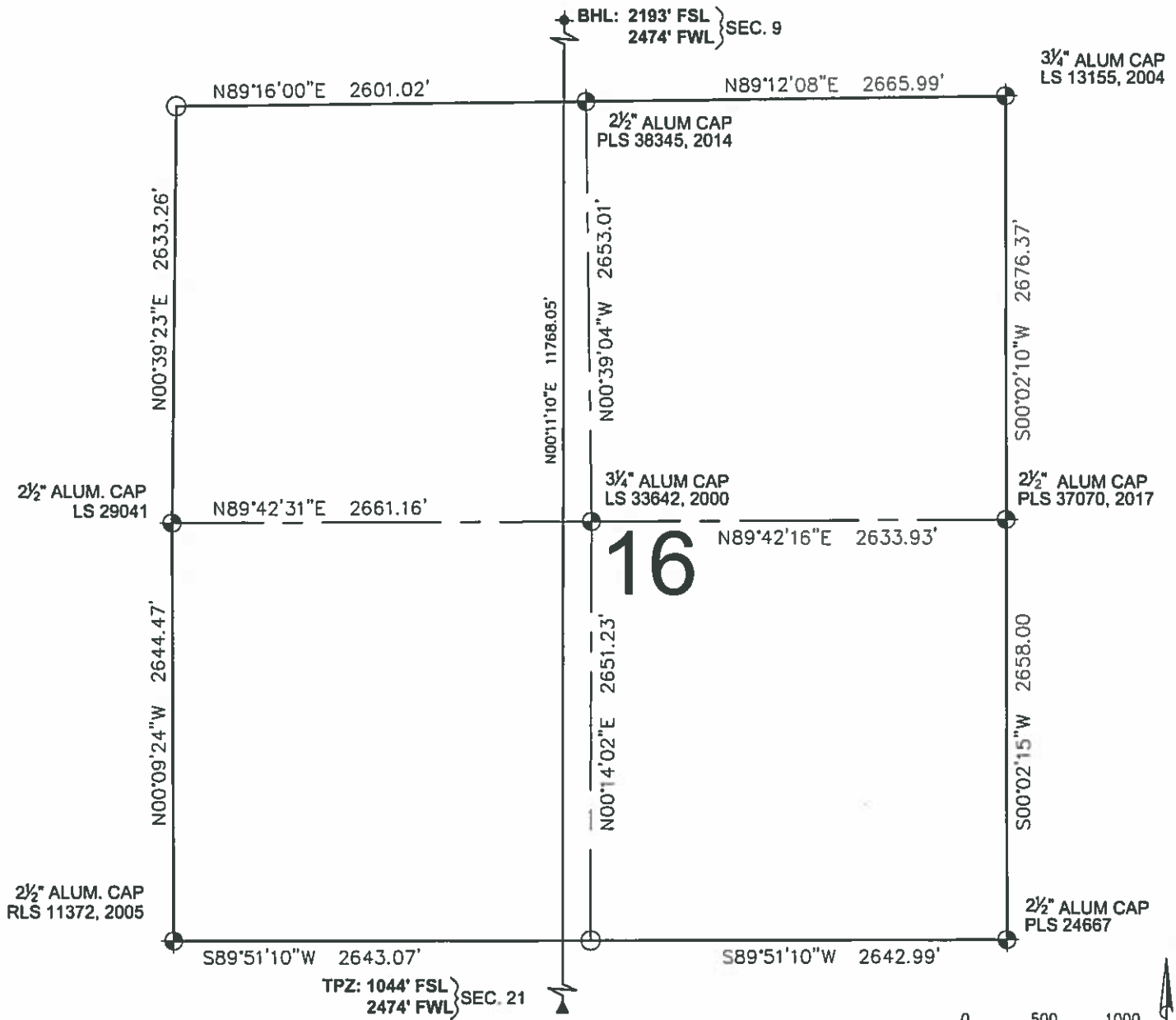
ROBERT J. GUFFEY, PLS 20680
COLORADO LICENSED PROFESSIONAL LAND SURVEYOR
FOR AND ON BEHALF OF P.F.S., LLC
d.b.a. ASCENT GEOMATICS SOLUTIONS



NOTICE: ACCORDING TO COLORADO LAW YOU MUST COMMENCE ANY LEGAL ACTION BASED UPON ANY DEFECT IN THIS SURVEY WITHIN THREE YEARS AFTER YOU FIRST DISCOVER SUCH DEFECT. IN NO EVENT MAY ANY ACTION BASED UPON ANY DEFECT IN THIS SURVEY BE COMMENCED MORE THAN TEN YEARS FROM THIS SAID DATE OF THIS CERTIFICATION SHOWN HEREON.

<p>ASCENT GEOMATICS SOLUTIONS</p>	FIELD DATE: 02-13-18	WELL NAME: DREAM WEAVER NORTH 3K-21H-N268	PREPARED FOR: <p>CRESTONE PEAK RESOURCES</p>
	DRAWING DATE: 04-12-18	SURFACE LOCATION: SE 1/4 SW 1/4 SEC. 21, T2N, R68W, 6TH P.M. WELD COUNTY, COLORADO	
BY: RMC	CHECKED: CLP		

DREAM WEAVER NORTH 3K-21H-N268 WELL LOCATION EXHIBIT





LEGEND

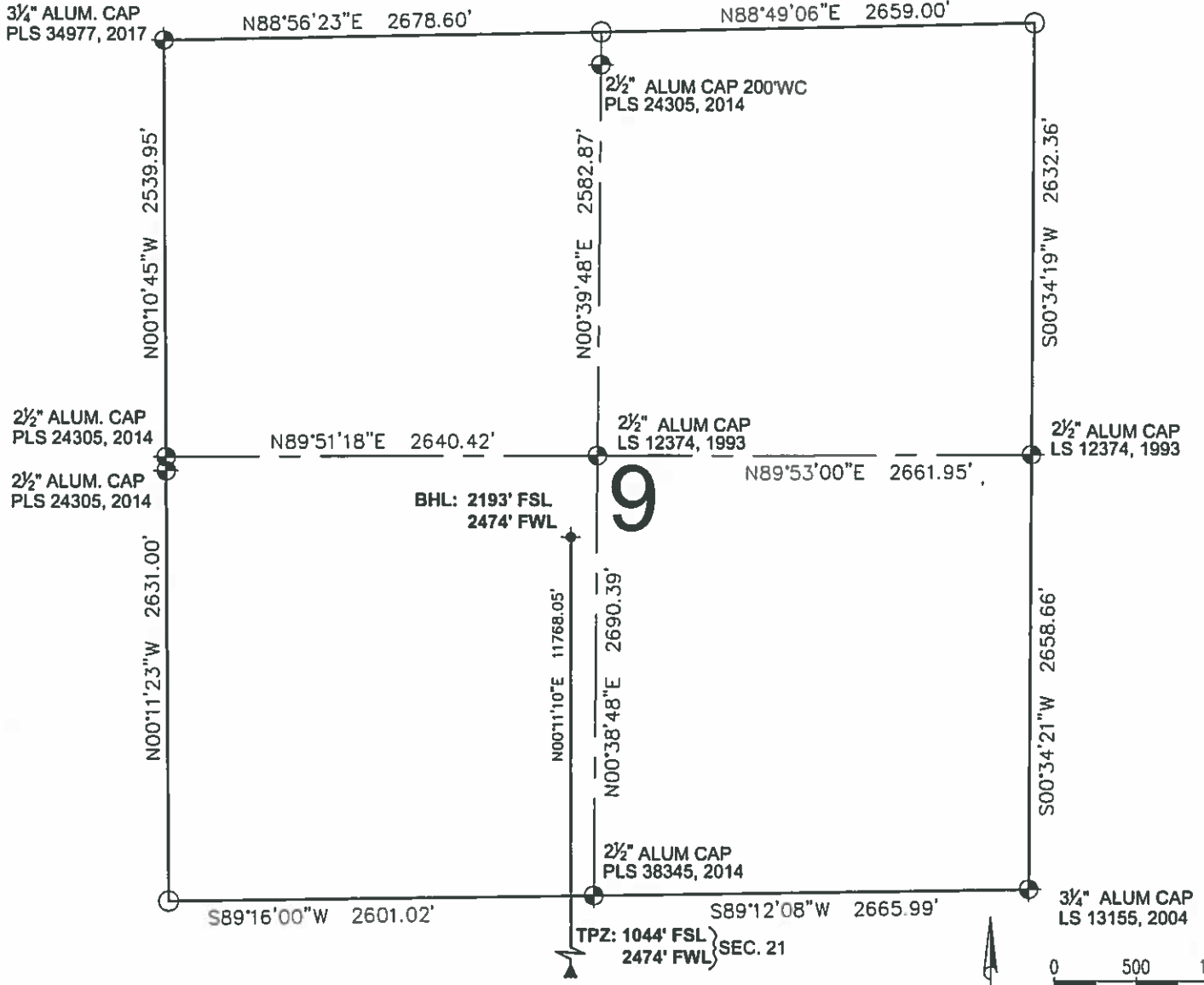
- ⊙ = EXISTING MONUMENT ⬆ = BOTTOM HOLE
- = CALCULATED POSITION ▲ = TOP OF PRODUCTION ZONE
- = PROPOSED WELL TPZ = TOP OF PRODUCTION ZONE
- ◆ = EXISTING WELL BHL = BOTTOM HOLE LOCATION
- WC = WITNESS CORNER

ROBERT J. GUFFEY, PLS 20680
 COLORADO LICENSED PROFESSIONAL LAND SURVEYOR
 FOR AND ON BEHALF OF P.F.S., LLC
 d.b.a. ASCENT GEOMATICS SOLUTIONS

SHEET 2 OF 3

 <p>7535 Hilltop Circle Denver, CO 80221 (303) 928-7128 www.ascentgeomatics.com</p>	FIELD DATE 02-13-18	WELL NAME DREAM WEAVER NORTH 3K-21H-N268	PREPARED FOR:
	DRAWING DATE 04-12-18	SURFACE LOCATION SE 1/4 SW 1/4 SEC. 21, T2N, R68W, 6TH P.M. WELD COUNTY, COLORADO	 CRESTONE PEAK RESOURCES
BY: RMC	CHECKED: CLP		

DREAM WEAVER NORTH 3K-21H-N268 WELL LOCATION EXHIBIT





LEGEND

- ⊕ = EXISTING MONUMENT
- = CALCULATED POSITION
- = PROPOSED WELL
- ◆ = EXISTING WELL
- ⬆ = BOTTOM HOLE
- ▲ = TOP OF PRODUCTION ZONE

ROBERT J. GUFFEY, PLS 20680
 COLORADO LICENSED PROFESSIONAL LAND SURVEYOR
 FOR AND ON BEHALF OF P.F.S., LLC
 d.b.a. ASCENT GEOMATICS SOLUTIONS



SHEET 3 OF 3

 <p>7535 Hilltop Circle Denver, CO 80221 (303) 928-7128 www.ascentgeomatics.com</p>	FIELD DATE: 02-13-18	WELL NAME: DREAM WEAVER NORTH 3K-21H-N268	PREPARED FOR:  <p>CRESTONE PEAK RESOURCES</p>
	DRAWING DATE: 04-12-18	SURFACE LOCATION: SE 1/4 SW 1/4 SEC. 21, T2N, R68W, 6TH P.M. WELD COUNTY, COLORADO	
BY: RMC	CHECKED: CLP		