

Crestone Peak Resources

DJ BASIN

S21-T2N-R68W

DREAM WEAVER North 3J-21H-N268

OH

PLAN #1

Anticollision Summary Report

23 May, 2018

Cathedral Energy Services

Anticollision Summary Report

Company:	Crestone Peak Resources	Local Co-ordinate Reference:	Well DREAM WEAVER North 3J-21H-N268 - Slot DREAM WEAVER North 3J-21H-N268 SHL
Project:	DJ BASIN	TVD Reference:	23' KB @ 4924.00usft (Original Well Elev)
Reference Site:	S21-T2N-R68W	MD Reference:	23' KB @ 4924.00usft (Original Well Elev)
Site Error:	0.00 usft	North Reference:	True
Reference Well:	DREAM WEAVER North 3J-21H-N268	Survey Calculation Method:	Minimum Curvature
Well Error:	0.00 usft	Output errors are at	2.00 sigma
Reference Wellbore	OH	Database:	USA EDM 5000 Multi Users DB
Reference Design:	PLAN #1	Offset TVD Reference:	Offset Datum

Reference	PLAN #1		
Filter type:	NO GLOBAL FILTER: Using user defined selection & filtering criteria		
Interpolation Method:	MD Interval 100.00usft	Error Model:	ISCWSA
Depth Range:	Unlimited	Scan Method:	Closest Approach 3D
Results Limited by:	Maximum center-center distance of 1,933.21 usft	Error Surface:	Pedal Curve
Warning Levels Evaluated at:	2.00 Sigma	Casing Method:	Not applied

Survey Tool Program	Date	5/23/2018		
From (usft)	To (usft)	Survey (Wellbore)	Tool Name	Description
0.00	2,000.00	PLAN #1 (OH)	VESSI_GYROFLEX	VESSI Gyroflex Gyro
2,001.00	19,774.94	PLAN #1 (OH)	MWD+HDGM	OWSG MWD + HDGM

Summary						
Site Name	Reference Measured Depth (usft)	Offset Measured Depth (usft)	Distance Between Centres (usft)	Distance Between Ellipses (usft)	Separation Factor	Warning
S21-T2N-R68W						
DREAM WEAVER North 3A-21H-N268 - OH - PLAN #1	200.00	200.00	109.29	108.80	222.884	CC, ES
DREAM WEAVER North 3A-21H-N268 - OH - PLAN #1	6,700.00	6,407.87	1,928.73	1,889.81	49.552	SF
DREAM WEAVER North 3B-21H-N268 - OH - PLAN #3	200.00	200.00	97.14	96.65	198.119	CC, ES
DREAM WEAVER North 3B-21H-N268 - OH - PLAN #3	19,774.94	19,884.15	1,904.26	1,517.87	4.928	SF
DREAM WEAVER North 3C-21H-N268 - OH - PLAN #2	200.00	200.00	85.00	84.51	173.354	CC, ES
DREAM WEAVER North 3C-21H-N268 - OH - PLAN #2	10,300.00	10,101.14	1,929.14	1,834.03	20.284	SF
DREAM WEAVER North 3D-21H-N268 - OH - PLAN #1	200.00	200.00	72.86	72.37	148.589	CC, ES
DREAM WEAVER North 3D-21H-N268 - OH - PLAN #1	19,700.00	19,560.00	1,512.34	1,130.75	3.963	SF
DREAM WEAVER North 3E-21H-N268 - OH - PLAN #1	200.00	200.00	60.71	60.22	123.824	CC, ES
DREAM WEAVER North 3E-21H-N268 - OH - PLAN #1	19,774.94	19,481.38	1,267.40	887.52	3.336	SF
DREAM WEAVER North 3F-21H-N268 - OH - PLAN #1	200.00	200.00	48.57	48.08	99.059	CC, ES
DREAM WEAVER North 3F-21H-N268 - OH - PLAN #1	19,774.94	19,748.66	1,199.28	812.42	3.100	SF
DREAM WEAVER North 3G-21H-N268 - OH - PLAN #1	200.00	200.00	36.43	35.94	74.293	CC, ES
DREAM WEAVER North 3G-21H-N268 - OH - PLAN #1	19,774.94	19,626.62	979.39	593.15	2.536	SF
DREAM WEAVER North 3H-21H-N268 - OH - PLAN #1	200.00	200.00	24.29	23.80	49.530	CC, ES
DREAM WEAVER North 3H-21H-N268 - OH - PLAN #1	19,774.94	19,529.80	670.86	300.44	1.811	SF
DREAM WEAVER North 3I-21H-N268 - OH - PLAN #1	567.58	569.07	11.74	9.93	6.482	CC
DREAM WEAVER North 3I-21H-N268 - OH - PLAN #1	19,200.00	19,047.34	245.27	-77.44	0.760	Level 1, ES, SF
DREAM WEAVER North 3K-21H-N268 - OH - PLAN #1	200.00	200.00	12.14	11.65	24.765	CC, ES
DREAM WEAVER North 3K-21H-N268 - OH - PLAN #1	19,774.94	19,555.21	247.91	14.54	1.062	Level 2, SF
DREAM WEAVER South 3A-21H-N268 - OH - PLAN #1	397.81	398.30	8.25	7.07	6.954	CC, ES
DREAM WEAVER South 3A-21H-N268 - OH - PLAN #1	400.00	400.45	8.26	7.07	6.914	SF
DREAM WEAVER South 3B-21H-N268 - OH - PLAN #2	449.54	450.37	12.29	10.92	8.935	CC, ES, SF
DREAM WEAVER South 3C-21H-N268 - OH - PLAN #1	487.18	488.02	21.61	20.10	14.275	CC, ES
DREAM WEAVER South 3C-21H-N268 - OH - PLAN #1	500.00	500.32	21.90	20.33	13.979	SF
DREAM WEAVER South 3D-21H-N268 - OH - PLAN #1	564.67	565.65	19.74	17.95	11.062	CC, ES, SF
DREAM WEAVER South 3E-21H-N268 - OH - PLAN #1	876.17	872.40	11.40	8.53	3.977	CC, ES, SF
DREAM WEAVER South 3F-21H-N268 - OH - PLAN #1	721.36	721.68	32.13	29.78	13.702	CC, ES, SF
DREAM WEAVER South 3G-21H-N268 - OH - PLAN #1	956.17	952.37	13.45	10.30	4.267	CC, ES, SF
DREAM WEAVER South 3H-21H-N268 - OH - PLAN #1	946.19	942.39	28.00	24.88	8.975	CC, ES, SF
DREAM WEAVER South 3I-21H-N268 - OH - PLAN #2	928.92	924.03	50.99	47.92	16.636	CC
DREAM WEAVER South 3I-21H-N268 - OH - PLAN #2	7,550.21	8,304.97	71.95	26.63	1.588	ES, SF
DREAM WEAVER South 3J-21H-N268 - OH - PLAN #2	908.23	902.50	71.04	68.05	23.702	CC
DREAM WEAVER South 3J-21H-N268 - OH - PLAN #2	8,132.57	7,900.68	89.03	44.23	1.987	ES, SF

CC - Min centre to center distance or convergent point, SF - min separation factor, ES - min ellipse separation

Cathedral Energy Services

Anticollision Summary Report

Company:	Crestone Peak Resources	Local Co-ordinate Reference:	Well DREAM WEAVER North 3J-21H-N268 - Slot DREAM WEAVER North 3J-21H-N268 SHL
Project:	DJ BASIN	TVD Reference:	23' KB @ 4924.00usft (Original Well Elev)
Reference Site:	S21-T2N-R68W	MD Reference:	23' KB @ 4924.00usft (Original Well Elev)
Site Error:	0.00 usft	North Reference:	True
Reference Well:	DREAM WEAVER North 3J-21H-N268	Survey Calculation Method:	Minimum Curvature
Well Error:	0.00 usft	Output errors are at	2.00 sigma
Reference Wellbore	OH	Database:	USA EDM 5000 Multi Users DB
Reference Design:	PLAN #1	Offset TVD Reference:	Offset Datum

Summary						
Site Name Offset Well - Wellbore - Design	Reference Measured Depth (usft)	Offset Measured Depth (usft)	Distance Between Centres (usft)	Distance Between Ellipses (usft)	Separation Factor	Warning
S21-T2N-R68W						
DREAM WEAVER South 3K-21H-N268 - OH - PLAN #2	867.12	860.34	93.38	90.52	32.635	CC, ES
DREAM WEAVER South 3K-21H-N268 - OH - PLAN #2	7,498.01	8,253.82	352.08	306.16	7.667	SF

Cathedral Energy Services

Anticollision Summary Report

Company:	Crestone Peak Resources	Local Co-ordinate Reference:	Well DREAM WEAVER North 3J-21H-N268 - Slot DREAM WEAVER North 3J-21H-N268 SHL
Project:	DJ BASIN	TVD Reference:	23' KB @ 4924.00usft (Original Well Elev)
Reference Site:	S21-T2N-R68W	MD Reference:	23' KB @ 4924.00usft (Original Well Elev)
Site Error:	0.00 usft	North Reference:	True
Reference Well:	DREAM WEAVER North 3J-21H-N268	Survey Calculation Method:	Minimum Curvature
Well Error:	0.00 usft	Output errors are at	2.00 sigma
Reference Wellbore	OH	Database:	USA EDM 5000 Multi Users DB
Reference Design:	PLAN #1	Offset TVD Reference:	Offset Datum

Summary						
Site Name Offset Well - Wellbore - Design	Reference Measured Depth (usft)	Offset Measured Depth (usft)	Distance Between Centres (usft)	Distance Between Ellipses (usft)	Separation Factor	Warning
S21-T2N-R68W (OFFSETS)						
ARTHUR STROMQUIST 2 - KMG WELL - GYRO	10,333.02	7,519.39	1,850.34	1,788.56	29.950	CC, ES
ARTHUR STROMQUIST 2 - KMG WELL - GYRO	10,800.00	7,534.99	1,908.31	1,841.77	28.680	SF
BLISS 41-21 - KPK WELL - SURVEYS						Out of range
BOULDER CREEK 9-4K8 - SNYDER OIL - NO SURVEY						Out of range
BROWN C UNIT 1 - CPR WELL - GYRO						Out of range
CANINO 1 - HUGHES C W-SOTEXCO 1 - NO SURVEY						Out of range
CHAMPLIN 41-4/1-68/ 1 - KMG WELL - NO SURVEYS						Out of range
CHAMPLIN 86 AMOCO B 2 - KPK WELL - NO SURVEY						Out of range
CHAMPLIN 86 AMOCO UT/Q 1 - KMG WELL - GYRO						Out of range
CHAMPLIN 86 AMOCO-B 1 - KPK WELL - NO SURVEY						Out of range
CHAMPLIN 86 AMOCO-B 3 - KPK WELL - NO SURVEY						Out of range
CHAMPLIN 86 AMOCO-B 4 - KPK WELL - NO SURVEY						Out of range
CHAMPLIN 86 AMOCO-B 5 - KPK WELL - NO SURVEY						Out of range
CHAMPLIN 86 AMOCO-B 6 - KPK WELL - NO SURVEY						Out of range
CHAMPLIN 86 AMOCO-F 5 - KPK WELL - NO SURVEY						Out of range
CHAMPLIN 86 AMOCO-O 9 - KMG WELL - GYRO						Out of range
CHAMPLIN32-4/1-68/ 2 - KMG WELL - NO SURVEYS						Out of range
CHMPLN 86 AMOCO-F 1 - KPK WELL - NO SURVEYS						Out of range
COLCLASURE 42-21 - KPK WELL - NO SURVEYS						Out of range
COOLEY 11-16 - KMG WELL - SURVEYS	14,299.38	7,756.42	392.50	257.52	2.908	CC, ES, SF
COOLEY 12-16 - KMG WELL - SURVEYS	14,247.77	7,700.21	1,709.66	1,578.10	12.995	CC
COOLEY 12-16 - KMG WELL - SURVEYS	14,300.00	7,700.71	1,710.46	1,578.04	12.917	ES
COOLEY 12-16 - KMG WELL - SURVEYS	14,500.00	7,702.61	1,728.16	1,593.47	12.830	SF
COOLEY 13-16 - KMG WELL - SURVEYS	12,778.01	7,600.39	1,837.71	1,734.41	17.790	CC
COOLEY 13-16 - KMG WELL - SURVEYS	12,800.00	7,600.58	1,837.84	1,734.30	17.749	ES
COOLEY 13-16 - KMG WELL - SURVEYS	13,000.00	7,602.26	1,851.07	1,745.79	17.581	SF
COOLEY 14-16 - KMG WELL - SURVEYS	12,807.32	7,683.03	258.99	154.90	2.488	CC, ES, SF
COOLEY 22-16 - KMG WELL - SURVEYS	14,874.61	7,771.70	1,083.49	933.77	7.237	CC, ES
COOLEY 22-16 - KMG WELL - SURVEYS	14,900.00	7,771.85	1,083.79	933.81	7.226	SF
COOLEY 23-16 - KMG WELL - SURVEYS	13,604.73	7,737.87	214.19	96.90	1.826	CC, ES, SF
COOLEY 35-16 - KMG WELL - SURVEYS	12,367.41	7,622.06	1,021.07	920.52	10.155	CC, ES
COOLEY 35-16 - KMG WELL - SURVEYS	12,500.00	7,623.41	1,029.64	927.85	10.116	SF
COPPER 31-15 - KMG WELL - SURVEYS						Out of range
CPC 31-4 (1-68) 3 - ANADARKO WELL - NO SURVEYS						Out of range
CPC 42-4 (1-68) 4 - ANADARKO WELL - NO SURVEYS						Out of range
DOMENICO 1 - NOBLE WELL - GYRO	19,774.94	7,485.43	1,625.81	1,564.74	26.620	CC, ES, SF
DUCKWORTH 31-16 - CPR WELL - GYRO	16,944.09	7,737.10	930.85	766.23	5.655	CC, ES
DUCKWORTH 31-16 - CPR WELL - GYRO	17,000.00	7,738.01	932.52	767.25	5.642	SF
DUCKWORTH 32-16 - CPR WELL - SURVEYS	15,470.31	7,651.39	935.45	789.93	6.428	CC
DUCKWORTH 32-16 - CPR WELL - SURVEYS	15,500.00	7,651.58	935.92	789.74	6.402	ES
DUCKWORTH 32-16 - CPR WELL - SURVEYS	15,600.00	7,652.22	944.39	796.85	6.401	SF
DUCKWORTH 33-16 - CPR WELL - SURVEYS	14,409.35	7,692.91	949.35	808.77	6.753	CC, ES, SF
DUCKWORTH 41-16 - CPR WELL - SURVEYS						Out of range
DUCKWORTH 43-16 - CPR WELL - GYRO						Out of range
DUCKWORTH 44-16 - CPR WELL - SURVEYS						Out of range
DUCKWORTH 6-0-16 - CPR WELL - SURVEYS	17,535.09	7,703.77	1,540.74	1,347.96	7.992	CC, ES
DUCKWORTH 6-0-16 - CPR WELL - SURVEYS	17,600.00	7,704.40	1,542.11	1,348.50	7.965	SF
DUCKWORTH B UNIT 1 - CPR WELL - GYRO	15,967.12	7,505.56	1,852.65	1,704.98	12.546	CC
DUCKWORTH B UNIT 1 - CPR WELL - GYRO	16,000.00	7,505.75	1,852.94	1,704.73	12.502	ES
DUCKWORTH B UNIT 1 - CPR WELL - GYRO	16,200.00	7,506.94	1,867.23	1,716.63	12.399	SF
DUCKWORTH B UNIT 2 - CPR WELL - GYRO	13,067.10	7,533.36	1,366.71	1,263.96	13.301	CC

CC - Min centre to center distance or convergent point, SF - min separation factor, ES - min ellipse separation

Cathedral Energy Services

Anticollision Summary Report

Company:	Crestone Peak Resources	Local Co-ordinate Reference:	Well DREAM WEAVER North 3J-21H-N268 - Slot DREAM WEAVER North 3J-21H-N268 SHL
Project:	DJ BASIN	TVD Reference:	23' KB @ 4924.00usft (Original Well Elev)
Reference Site:	S21-T2N-R68W	MD Reference:	23' KB @ 4924.00usft (Original Well Elev)
Site Error:	0.00 usft	North Reference:	True
Reference Well:	DREAM WEAVER North 3J-21H-N268	Survey Calculation Method:	Minimum Curvature
Well Error:	0.00 usft	Output errors are at	2.00 sigma
Reference Wellbore	OH	Database:	USA EDM 5000 Multi Users DB
Reference Design:	PLAN #1	Offset TVD Reference:	Offset Datum

Summary						
Site Name Offset Well - Wellbore - Design	Reference Measured Depth (usft)	Offset Measured Depth (usft)	Distance Between Centres (usft)	Distance Between Ellipses (usft)	Separation Factor	Warning
S21-T2N-R68W (OFFSETS)						
DUCKWORTH B UNIT 2 - CPR WELL - GYRO	13,100.00	7,533.45	1,367.11	1,263.81	13.235	ES
DUCKWORTH B UNIT 2 - CPR WELL - GYRO	13,200.00	7,533.72	1,373.16	1,268.51	13.122	SF
EAST RINN 0-4-15 - CPR WELL - SURVEYS						Out of range
EAST RINN 13-15 - CPR WELL - SURVEYS						Out of range
EDITH ANN 1 - CPR WELL - GYRO						Out of range
EDITH ANN 33-21 - CPR WELL - GYRO	9,064.76	7,539.79	815.48	770.48	18.121	CC, ES
EDITH ANN 33-21 - CPR WELL - GYRO	9,200.00	7,540.63	826.62	780.04	17.747	SF
EDITH ANN 34-21 - CPR WELL - GYRO	7,687.98	7,462.41	714.29	680.03	20.852	CC, ES
EDITH ANN 34-21 - CPR WELL - GYRO	7,700.00	7,467.59	714.38	680.10	20.841	SF
EDITH ANN 4-21 - CPR WELL - SURVEYS	8,249.12	7,710.18	1,607.83	1,561.00	34.332	CC, ES
EDITH ANN 4-21 - CPR WELL - SURVEYS	8,400.00	7,711.19	1,614.89	1,567.67	34.195	SF
EDITH ANN 44-21 - CPR WELL - GYRO						Out of range
EDITH ANN 6-8-21 - CPR WELL - SURVEYS	7,170.17	7,269.19	1,518.33	1,479.46	39.061	CC, ES
EDITH ANN 6-8-21 - CPR WELL - SURVEYS	7,600.00	7,584.82	1,566.93	1,525.84	38.132	SF
EDITH ANN 8-8-21 - CPR WELL - SURVEYS						Out of range
EDITH ANN-DUCKWORTH 4A-21H-O268 - CPR - FINAL	8,319.04	8,364.07	426.50	379.82	9.138	CC
EDITH ANN-DUCKWORTH 4A-21H-O268 - CPR - FINAL	17,078.49	17,135.47	444.52	167.31	1.604	ES, SF
EDITH ANN-DUCKWORTH 4B-21H-O268 - CPR - FINAL	14,822.72	14,971.25	700.93	450.45	2.798	CC
EDITH ANN-DUCKWORTH 4B-21H-O268 - CPR - FINAL	17,091.78	17,237.97	719.44	394.54	2.214	ES, SF
EDITH ANN-DUCKWORTH 4C-21H-O268 - CPR - FINA	16,832.97	16,767.00	1,104.71	794.43	3.560	CC, ES, SF
EDITH ANN-DUCKWORTH 4D-21H-O268 - CPR - FINA	17,090.29	17,188.00	1,399.69	1,073.27	4.288	CC
EDITH ANN-DUCKWORTH 4D-21H-O268 - CPR - FINA	17,100.00	17,188.00	1,399.72	1,073.17	4.286	ES, SF
EDITH ANN-DUCKWORTH 4E-21H-O268 - CPR - FINAL	15,862.57	15,788.40	1,687.08	1,402.22	5.922	CC
EDITH ANN-DUCKWORTH 4E-21H-O268 - CPR - FINAL	16,000.00	15,866.52	1,689.70	1,401.36	5.860	ES
EDITH ANN-DUCKWORTH 4E-21H-O268 - CPR - FINAL	17,200.00	17,002.97	1,770.07	1,443.70	5.424	SF
EDITH ANN-DUCKWORTH 4F-21H-O268 - CPR - FINAL						Out of range
EDITH ANN-DUCKWORTH 4G-21H-O268 - CPR - FINA						Out of range
EDITH ANN-DUCKWORTH 4H-21H-O268 - CPR - FINA						Out of range
ERIE CORP 42-4 - KMG WELL - NO SURVEYS						Out of range
EVERIST 12-10 - KMG WELL - SURVEYS						Out of range
EVERIST 12-10X - KMG WELL - NO SURVEYS						Out of range
EVERIST 13-10 - KMG WELL - SURVEYS						Out of range
EVERIST 33-10 - KMG WELL - SURVEYS						Out of range
FAIRVIEW 1 - EXTRACTION WELL - NO SURVEYS						Out of range
FAIRVIEW 3 - EXTRACTION O&G LLC - SURVEYS						Out of range
FAIRVIEW 4 - EXTRACTION O&G LLC - SURVEYS						Out of range
FAIRVIEW 5 - EXTRACTION O&G LLC - SURVEYS						Out of range
FILE 1-17 - CPR WELL - SURVEYS						Out of range
FILE 31-17 - CPR WELL - SURVEYS						Out of range
FILE 32-17 - CPR WELL - SURVEYS						Out of range
FILE 41-17 - CPR WELL - SURVEYS						Out of range
FILE 42-17 - CPR WELL - NO SURVEYS						Out of range
FILE 4-2-17 - CPR WELL - SURVEYS						Out of range
FILE 42-17X - CPR WELL - SURVEYS						Out of range
FILE 6-0-17 - CPR WELL - SURVEYS						Out of range
FILE 8-2-17 - CPR WELL - SURVEYS						Out of range
FREDERICKS 13-27 - KMG WELL - NO SURVEYS						Out of range
FREDERICKS 13-27X - KMG WELL - SURVEYS						Out of range
GARVER U 34-5JI - KMG WELL - NO SURVEYS						Out of range
HINGLEY 1 - KPK WELL - NO SURVEYS						Out of range
HINGLEY 2 - KPK WELL - NO SUREYS						Out of range

CC - Min centre to center distance or convergent point, SF - min separation factor, ES - min ellipse separation

Cathedral Energy Services

Anticollision Summary Report

Company:	Crestone Peak Resources	Local Co-ordinate Reference:	Well DREAM WEAVER North 3J-21H-N268 - Slot DREAM WEAVER North 3J-21H-N268 SHL
Project:	DJ BASIN	TVD Reference:	23' KB @ 4924.00usft (Original Well Elev)
Reference Site:	S21-T2N-R68W	MD Reference:	23' KB @ 4924.00usft (Original Well Elev)
Site Error:	0.00 usft	North Reference:	True
Reference Well:	DREAM WEAVER North 3J-21H-N268	Survey Calculation Method:	Minimum Curvature
Well Error:	0.00 usft	Output errors are at	2.00 sigma
Reference Wellbore	OH	Database:	USA EDM 5000 Multi Users DB
Reference Design:	PLAN #1	Offset TVD Reference:	Offset Datum

Summary						
Site Name Offset Well - Wellbore - Design	Reference Measured Depth (usft)	Offset Measured Depth (usft)	Distance Between Centres (usft)	Distance Between Ellipses (usft)	Separation Factor	Warning
S21-T2N-R68W (OFFSETS)						
HSR-STROMQUIST 14-21 - KMG WELL - GYRO	0.00	0.00	276.54			
HSR-STROMQUIST 14-21 - KMG WELL - GYRO	8,200.00	7,541.63	881.58	844.85	24.003	SF
JACK A MLEYNEK 2 - KPK WELL - NO SURVEYS						Out of range
JACK MLEYNEK 1 - KPK WELL - NO SURVEYS						Out of range
JACK MLEYNEK 3 - KPK WELL - NO SURVEYS						Out of range
JACK MLEYNEK 4 - KPK WELL - NO SURVEYS						Out of range
JACK MLEYNEK 5 - KPK WELL - NO SURVEYS						Out of range
JILLSON 0-6-22 - CPR WELL - SURVEYS						Out of range
JILLSON 1 - KPK WELL - NO SURVEYS						Out of range
JILLSON 11-22 - CPR WELL - GYRO						Out of range
JILLSON 12-22 - CPR WELL - GYRO						Out of range
JILLSON 14-22 - CPR WELL - GYRO						Out of range
JILLSON 3 - KPK WELL - NO SURVEYS						Out of range
JILLSON 5 - KPK WELL - NO SURVEYS						Out of range
JILLSON A 1 - KPK WELL - NO SURVEYS	5,541.22	5,471.57	1,111.86	1,087.62	45.863	CC, ES, SF
JILLSON A 2 - KPK WELL - NO SURVEYS	200.00	175.99	1,721.65	1,721.10	3,127.702	CC, ES
JILLSON A 2 - KPK WELL - NO SURVEYS	5,500.00	5,430.72	1,863.30	1,839.38	77.898	SF
JILLSON A 3 - KPK WELL - NO SURVEYS						Out of range
JILLSON A 4 - KPK WELL - NO SURVEYS						Out of range
JILLSON-EAST RINN 3A-22H-M268 - CPR WELL - SUR						Out of range
JILLSON-EAST RINN 3B-22H-M268 - CPR WELL - SUR						Out of range
JILLSON-EAST RINN 3C-22H-M268 - CPR WELL - SUR						Out of range
KENNEDY 1 - MACEY & MERSHON WELL - NO SURVE						Out of range
KENNEDY 31-21 - CPR WELL - GYRO	11,621.40	7,546.20	818.31	737.56	10.133	CC, ES
KENNEDY 31-21 - CPR WELL - GYRO	11,700.00	7,546.07	822.08	740.20	10.040	SF
KENNEDY 32-21 - CPR WELL - GYRO	10,130.23	7,534.02	1,059.63	1,000.69	17.978	CC, ES
KENNEDY 32-21 - CPR WELL - GYRO	10,300.00	7,536.26	1,073.14	1,011.99	17.549	SF
KENNEDY 41-21 - CPR WELL - GYRO						Out of range
KENNEDY 4-2-21 - CPR WELL - SURVEYS	10,942.38	7,596.99	379.22	302.10	4.917	CC, ES
KENNEDY 4-2-21 - CPR WELL - SURVEYS	11,000.00	7,597.18	383.57	305.25	4.898	SF
KENNEDY 6-0-21 - CPR WELL - SURVEYS	12,228.32	7,605.07	1,563.53	1,467.84	16.341	CC, ES
KENNEDY 6-0-21 - CPR WELL - SURVEYS	12,500.00	7,609.91	1,586.95	1,486.93	15.867	SF
KENNEDY 6-4-21 - CPR WELL - SURVEYS	9,779.33	7,662.19	1,640.31	1,576.56	25.730	CC
KENNEDY 6-4-21 - CPR WELL - SURVEYS	9,800.00	7,662.49	1,640.44	1,576.34	25.593	ES
KENNEDY 6-4-21 - CPR WELL - SURVEYS	10,200.00	7,668.36	1,693.38	1,623.86	24.359	SF
KENNEDY 8-0-21 - CPR WELL - SURVEYS						Out of range
KENNEDY GAS UNIT 1 - CPR WELL - GYRO	10,663.20	7,498.18	1,907.95	1,841.51	28.718	CC
KENNEDY GAS UNIT 1 - CPR WELL - GYRO	10,700.00	7,497.51	1,908.30	1,841.30	28.481	ES
KENNEDY GAS UNIT 1 - CPR WELL - GYRO	10,900.00	7,493.92	1,922.58	1,852.80	27.551	SF
LONGMONT 8-10K - TOP OPERATING WELL - NO SUR						Out of range
LONGMONT FARMS 1 - KPK WELL - NO SURVEYS						Out of range
LONGMONT FARMS 3 - KPK WELL - NO SURVEYS						Out of range
MAX SERAFINI 1 - KPK WELL - NO SURVEYS						Out of range
MAX SERAFINI C 1 - KPK WELL - NO SURVEYS						Out of range
MILES 1 - KPK WELL - NO SURVEYS						Out of range
MILES 33-3M - KMG WELL - GYRO						Out of range
MILES 4 - KPK WELL - NO SURVEYS						Out of range
MILES 5 - KPK WELL - NO SURVEYS						Out of range
MILES JOSEPHINE 1 - KPK WELL - NO SURVEYS						Out of range
MILES JOSEPHINE 2 - KPK WELL - NO SURVEYS						Out of range
MILES JOSEPHINE B 1 - KPK WELL - NO SURVEYS						Out of range

CC - Min centre to center distance or convergent point, SF - min separation factor, ES - min ellipse separation

Cathedral Energy Services

Anticollision Summary Report

Company:	Crestone Peak Resources	Local Co-ordinate Reference:	Well DREAM WEAVER North 3J-21H-N268 - Slot DREAM WEAVER North 3J-21H-N268 SHL
Project:	DJ BASIN	TVD Reference:	23' KB @ 4924.00usft (Original Well Elev)
Reference Site:	S21-T2N-R68W	MD Reference:	23' KB @ 4924.00usft (Original Well Elev)
Site Error:	0.00 usft	North Reference:	True
Reference Well:	DREAM WEAVER North 3J-21H-N268	Survey Calculation Method:	Minimum Curvature
Well Error:	0.00 usft	Output errors are at	2.00 sigma
Reference Wellbore	OH	Database:	USA EDM 5000 Multi Users DB
Reference Design:	PLAN #1	Offset TVD Reference:	Offset Datum

Summary						
Site Name Offset Well - Wellbore - Design	Reference Measured Depth (usft)	Offset Measured Depth (usft)	Distance Between Centres (usft)	Distance Between Ellipses (usft)	Separation Factor	Warning
S21-T2N-R68W (OFFSETS)						
MILLER 12-27 - CPR WELL - GYRO						Out of range
MILTON NELSON 1 - KPK WELL - NO SURVEYS	200.00	181.00	903.11	902.58	1,712.398	CC, ES
MILTON NELSON 1 - KPK WELL - NO SURVEYS	5,200.00	4,960.00	1,472.34	1,448.83	62.622	SF
MILTON NELSON UN-C 1 - KPK WELL - NO SURVEYS	628.41	612.85	1,100.91	1,098.66	488.139	CC, ES
MILTON NELSON UN-C 1 - KPK WELL - NO SURVEYS	5,500.00	5,227.00	1,379.16	1,353.09	52.907	SF
MILTON NELSON UNIT 1 - KPK WELL - NO SURVEYS	3,743.00	3,702.50	101.83	85.80	6.351	CC
MILTON NELSON UNIT 1 - KPK WELL - NO SURVEYS	3,800.00	3,753.98	102.12	85.76	6.242	ES
MILTON NELSON UNIT 1 - KPK WELL - NO SURVEYS	3,900.00	3,853.09	103.97	87.04	6.138	SF
MLEYNEK 28-10M - KMG WELL - GYRO						Out of range
MLEYNEK U 28-10JI - KMG WELL - GYRO						Out of range
MLEYNEK U 28-15JI - KMG WELL - GYRO						Out of range
MORGAN-A 4 - KPK WELL - NO SURVEYS						Out of range
NELSON 42-33 /2-68/ 2 - ANADARKO WELL - NO SURV						Out of range
NELSON DUANE E 41-33 (2-68) 1 - CHAMPLIN PETRO						Out of range
NELSON DUANE E 41-33 (2-68) 1-X - KMG WELL - NO						Out of range
NELSON E UNIT 2 - CPR WELL - GYRO						Out of range
NELSON MILTON H 'D' 1 - KMG WELL - GYRO						Out of range
NELSON MILTON H 'M' 1 - KMG WELL - GYRO						Out of range
NELSON MILTON-F 1 - KPK WELL - NO SURVEYS						Out of range
NORTH RINN 0-4-9 - CPR WELL - SURVEYS						Out of range
NORTH RINN 0-6-9 - CPR WELL - SURVEYS						Out of range
NORTH RINN 0-8-9 - CPR WELL - SURVEYS						Out of range
NORTH RINN 13-9 - CPR WELL - SURVEYS	19,545.37	7,610.76	1,686.93	1,474.78	7.951	CC, ES
NORTH RINN 13-9 - CPR WELL - SURVEYS	19,700.00	7,610.61	1,694.01	1,480.07	7.918	SF
NORTH RINN 14-9 - CPR WELL - SURVEYS	18,149.51	7,564.71	1,736.74	1,549.58	9.279	CC, ES
NORTH RINN 14-9 - CPR WELL - SURVEYS	18,300.00	7,565.55	1,743.25	1,554.91	9.256	SF
NORTH RINN 24-9 - CPR WELL - SURVEYS	18,274.49	7,611.32	385.28	196.25	2.038	CC, ES, SF
NORTH RINN 2-4-9 - CPR WELL - SURVEYS	19,774.94	7,706.49	1,071.46	857.30	5.003	CC, ES, SF
NORTH RINN 2-6-9 - CPR WELL - SURVEYS	18,802.50	7,502.31	1,318.65	1,123.90	6.771	CC, ES
NORTH RINN 2-6-9 - CPR WELL - SURVEYS	18,900.00	7,503.31	1,322.25	1,126.64	6.760	SF
OSKARSON 1 - HRM RES II LLC - NO SURVEYS						Out of range
OSKARSON 2 - ENERVEST OP - NO SURVEYS						Out of range
OSKARSON 24-33 - CPR WELL - GYRO						Out of range
OSKARSON 2-8-33 - CPR WELL - SURVEYS						Out of range
OSKARSON 3 - HRM RES II LLC - NO SURVEYS						Out of range
OSKARSON-E 1 - CPR WELL - GYRO						Out of range
OSKARSON-E 2 - CPR WELL - NO SURVEYS						Out of range
RASMUSSEN 3 - PETERSON ENERGY - GYRO						Out of range
RASMUSSEN 1 - PETERSON - GYRO	5,103.54	4,967.00	1,211.52	1,190.54	57.745	CC, ES
RASMUSSEN 1 - PETERSON - GYRO	5,200.00	4,967.00	1,215.35	1,194.10	57.192	SF
RASMUSSEN 11-28 - CPR WELL - SURVEYS	6,073.54	6,350.02	1,762.40	1,711.37	34.540	CC
RASMUSSEN 11-28 - CPR WELL - SURVEYS	6,100.00	6,373.36	1,762.42	1,711.27	34.456	ES
RASMUSSEN 11-28 - CPR WELL - SURVEYS	6,900.00	7,104.61	1,784.07	1,729.12	32.467	SF
RASMUSSEN 12-28 - CPR WELL - SURVEYS						Out of range
RASMUSSEN 2 - PETERSON ENERGY - NO SURVEYS	5,247.92	5,003.00	1,642.33	1,618.37	68.554	CC, ES
RASMUSSEN 2 - PETERSON ENERGY - NO SURVEYS	5,500.00	5,003.00	1,661.56	1,636.61	66.612	SF
RASMUSSEN 21-28 - CPR WELL - GYRO	6,858.18	6,800.39	1,083.43	1,052.06	34.536	CC, ES
RASMUSSEN 21-28 - CPR WELL - GYRO	7,000.00	6,949.07	1,094.60	1,062.52	34.118	SF
RASMUSSEN 22-28 - CPR WELL - GYRO						Out of range
RASMUSSEN 2-4-28 - CPR WELL - SURVEYS						Out of range
RASMUSSEN 31-28 - CPR WELL - GYRO	6,917.86	6,865.41	1,274.84	1,244.40	41.876	CC, ES

CC - Min centre to center distance or convergent point, SF - min separation factor, ES - min ellipse separation

Cathedral Energy Services

Anticollision Summary Report

Company:	Crestone Peak Resources	Local Co-ordinate Reference:	Well DREAM WEAVER North 3J-21H-N268 - Slot DREAM WEAVER North 3J-21H-N268 SHL
Project:	DJ BASIN	TVD Reference:	23' KB @ 4924.00usft (Original Well Elev)
Reference Site:	S21-T2N-R68W	MD Reference:	23' KB @ 4924.00usft (Original Well Elev)
Site Error:	0.00 usft	North Reference:	True
Reference Well:	DREAM WEAVER North 3J-21H-N268	Survey Calculation Method:	Minimum Curvature
Well Error:	0.00 usft	Output errors are at	2.00 sigma
Reference Wellbore	OH	Database:	USA EDM 5000 Multi Users DB
Reference Design:	PLAN #1	Offset TVD Reference:	Offset Datum

Summary						
Site Name Offset Well - Wellbore - Design	Reference Measured Depth (usft)	Offset Measured Depth (usft)	Distance Between Centres (usft)	Distance Between Ellipses (usft)	Separation Factor	Warning
S21-T2N-R68W (OFFSETS)						
RASMUSSEN 31-28 - CPR WELL - GYRO	7,100.00	7,048.60	1,291.40	1,260.18	41.362	SF
RASMUSSEN 32-28 32-28 - CPR WELL - GYRO						Out of range
RASMUSSEN 4-0-28 - CPR WELL - SURVEYS	6,945.88	7,348.39	486.65	431.22	8.780	CC, ES, SF
RASMUSSEN 41-28 - CPR WELL - GYRO						Out of range
RASMUSSEN 42-28 - KPK WELL - SURVEYS						Out of range
RASMUSSEN 4-2-28 - CPR WELL - SURVEYS	6,900.00	6,993.19	1,670.11	1,628.89	40.522	CC, ES
RASMUSSEN 4-2-28 - CPR WELL - SURVEYS	7,000.00	7,094.35	1,677.25	1,635.66	40.330	SF
RASMUSSEN 4-4-28 - CPR WELL - SURVEYS						Out of range
RASMUSSEN 44-29 - KPK WELL - NO SURVEYS						Out of range
RASMUSSEN 4-A - PETERSON ENERGY - GYRO	5,043.22	4,960.00	1,901.24	1,879.79	88.617	CC, ES
RASMUSSEN 4-A - PETERSON ENERGY - GYRO	5,300.00	4,960.00	1,918.50	1,896.15	85.812	SF
RASMUSSEN C" 2" - CPR WELL - GYRO						Out of range
RASMUSSEN-C-UNIT 1 - CPR WELL - GYRO						Out of range
RODGERS 1 - KPK WELL - NO SURVEYS						Out of range
SAUNDERS TRUST 8-2K8 - EXTRACTION WELL - NO						Out of range
SCHLAGEL 2 - EXTRACTION WELL - NO SURVEYS						Out of range
SERAFINI E MAX GU 1 - KMG WELL - GYRO	13,196.83	7,497.38	1,283.60	1,178.97	12.269	CC
SERAFINI E MAX GU 1 - KMG WELL - GYRO	13,200.00	7,497.24	1,283.60	1,178.94	12.264	ES
SERAFINI E MAX GU 1 - KMG WELL - GYRO	13,300.00	7,493.10	1,287.73	1,182.02	12.181	SF
SERAFINI-B 2 - KPK WELL - NO SURVEYS						Out of range
SHAW 1 - KPK WELL - NO SURVEYS						Out of range
SHAW 15-20 - KPK - SURVEYS						Out of range
SHAW 16-20 - KPK - SURVEYS						Out of range
STROMQUIST 1 - KPK WELL - NO SURVEYS						Out of range
STROMQUIST 11-21 - KMG WELL - GYRO	8,956.28	7,542.74	267.79	224.11	6.131	CC, ES, SF
STROMQUIST 13-21 - KMG WELL - GYRO	2,409.35	2,418.24	1,030.51	1,022.51	128.785	CC, ES
STROMQUIST 13-21 - KMG WELL - GYRO	7,700.00	7,513.46	1,474.18	1,439.75	42.821	SF
STROMQUIST 22-21 - KMG WELL - SURVEYS	247.48	243.24	967.97	967.36	1,587.500	CC, ES
STROMQUIST 22-21 - KMG WELL - SURVEYS	9,700.00	7,652.28	1,049.21	990.82	17.967	SF
STROMQUIST 23-21 - KMG WELL - SURVEYS	8,140.89	7,575.35	47.09	9.09	1.239	Level 2, CC, ES, SF
STROMQUIST 34-21 - KMG WELL - SURVEYS	630.49	609.65	1,098.93	1,096.59	468.886	CC, ES
STROMQUIST 34-21 - KMG WELL - SURVEYS	4,600.00	4,306.10	1,918.79	1,896.92	87.734	SF
STROMQUIST 35-21 - KMG WELL - SURVEYS	1,825.67	1,766.87	350.25	343.15	49.377	CC, ES
STROMQUIST 35-21 - KMG WELL - SURVEYS	7,000.00	7,026.86	981.16	944.13	26.493	SF
TRAVELERS 28-11M - KMG WELL - GYRO						Out of range
TRAVELERS U 28-13DI - KMG WELL - GYRO						Out of range
UPRC 33-1M - KMG WELL - GYRO						Out of range
UPRR 43 PAN AM-B 7 - KPK WELL - NO SURVEYS						Out of range
WESTERN 3-21A - KMG WELL - GYRO	11,515.55	7,512.40	409.07	329.94	5.170	CC, ES, SF
WILDFLOWER 12-27 - KMG WELL - SURVEYS						Out of range
WILDFLOWER 33-27 - KMG WELL - SURVEYS						Out of range
WOOLEY UNIT 1 - KPK WELL - NO SURVEYS						Out of range

CC - Min centre to center distance or convergent point, SF - min separation factor, ES - min ellipse separation

Cathedral Energy Services

Anticollision Summary Report

Company:	Crestone Peak Resources	Local Co-ordinate Reference:	Well DREAM WEAVER North 3J-21H-N268 - Slot DREAM WEAVER North 3J-21H-N268 SHL
Project:	DJ BASIN	TVD Reference:	23' KB @ 4924.00usft (Original Well Elev)
Reference Site:	S21-T2N-R68W	MD Reference:	23' KB @ 4924.00usft (Original Well Elev)
Site Error:	0.00 usft	North Reference:	True
Reference Well:	DREAM WEAVER North 3J-21H-N268	Survey Calculation Method:	Minimum Curvature
Well Error:	0.00 usft	Output errors are at	2.00 sigma
Reference Wellbore	OH	Database:	USA EDM 5000 Multi Users DB
Reference Design:	PLAN #1	Offset TVD Reference:	Offset Datum

Summary						
Site Name	Reference Measured Depth (usft)	Offset Measured Depth (usft)	Distance Between Centres (usft)	Distance Between Ellipses (usft)	Separation Factor	Warning
Offset Well - Wellbore - Design						
S32-T2N-R68W						
Anderson 22-32 - KPK WELL - NO SURVEYS						Out of range
Anderson 32-32 - CPR WELL - SURVEYS						Out of range
Anderson 41-32 - CPR - GYRO						Out of range
Anderson 4-2-32 - CPR WELL - SURVEYS						Out of range
Anderson 6-4-32 - CPR WELL - SURVEYS						Out of range
Anderson Trust 1 - KPK - NO SURVEYS						Out of range
Anderson Trust 1 A - CPR WELL - GYRO						Out of range
Anderson Trust 2-A - CPR WELL - NO SURVEYS						Out of range
Anderson Trust 32-2 - CPR WELL - GYRO						Out of range
Anderson Trust 32-8 - CPR WELL - GYRO						Out of range
Anderson Trust C 1 - CPR WELL - SURVEYS						Out of range
Anderson Trust C Unit 2 - CPR WELL - GYRO						Out of range
Brown 22-5 - CPR WELL - GYRO						Out of range
Brown 31-5 - CPR WELL - SURVEYS						Out of range
Brown 41-5 - CPR WELL - SURVEYS						Out of range
Brown 5-3 - CPR WELL - GYRO						Out of range
Brown 5-5 - CPR WELL - GYRO						Out of range
Brown C Unit 1 - CPR WELL - GYRO						Out of range
Brown C Unit 2 - CPR WELL - GYRO						Out of range
Bryant 10-30 - KMG WELL - SURVEYS						Out of range
Bryant 16-30 - KMG WELL - SURVEYS						Out of range
Bryant 20-30 - KMG WELL - SURVEYS						Out of range
Bryant 23-30 - KMG WELL - SURVEYS						Out of range
Bryant 24-30 - KMG WELL - SURVEYS						Out of range
Bryant 33-29 - KMG WELL - SURVEYS						Out of range
Bryant 36-30 - KMG WELL - SURVEYS						Out of range
Bryant 8-30 - KMG WELL - SURVEYS						Out of range
Bryant Federal 37-30 - KMG WELL - SURVEYS						Out of range
Bulthaup 1-6 - KMG WELL - GYRO						Out of range
Bulthaup 16-6 - KMG WELL - SURVEYS						Out of range
Bulthaup 17-6 - KMG WELL - SURVEYS						Out of range
Bulthaup 24-6 - KMG WELL - SURVEYS						Out of range
Bulthaup 27-6 - KMG WELL - SURVEYS						Out of range
Bulthaup 39-6 - KMG WELL - SURVEYS						Out of range
Bulthaup 40-6 - KMG WELL - SURVEYS						Out of range
Bulthaup 8-6 - KMG WELL - GYRO						Out of range
Bulthaup 9-6 - KMG WELL - SURVEYS						Out of range
Canino 1-X - HUGHES CW - NO SURVEYS						Out of range
Champlin 86 Amoco F 6 - KPK - NO SURVEYS						Out of range
Champlin 86 N 1 - KMG WELL - GYRO						Out of range
Champlin Amoco 86 F 7 - KPK WELL - SURVEYS						Out of range
Cinque 1 - FOUNDATION WELL - NO SURVEYS						Out of range
Cinque 2 - FOUNDATION WELL - NO SURVEYS						Out of range
Cinque 4 - FOUNDATION WELL - NO SURVEYS						Out of range
FILE 3A-32H-K268 - OH - FINAL						Out of range
FILE 3B-32H-K268 - OH - FINAL						Out of range
FILE 3C-32H-K268 - OH - FINAL						Out of range
FILE 3D-32H-K268 - OH - FINAL						Out of range
FILE 3E-32H-K268 - OH - FINAL						Out of range
FILE 3F-32H-K268 - OH - FINAL						Out of range
FILE 3G-32H-K268 - OH - FINAL						Out of range

CC - Min centre to center distance or convergent point, SF - min separation factor, ES - min ellipse separation

Cathedral Energy Services

Anticollision Summary Report

Company:	Crestone Peak Resources	Local Co-ordinate Reference:	Well DREAM WEAVER North 3J-21H-N268 - Slot DREAM WEAVER North 3J-21H-N268 SHL
Project:	DJ BASIN	TVD Reference:	23' KB @ 4924.00usft (Original Well Elev)
Reference Site:	S21-T2N-R68W	MD Reference:	23' KB @ 4924.00usft (Original Well Elev)
Site Error:	0.00 usft	North Reference:	True
Reference Well:	DREAM WEAVER North 3J-21H-N268	Survey Calculation Method:	Minimum Curvature
Well Error:	0.00 usft	Output errors are at	2.00 sigma
Reference Wellbore	OH	Database:	USA EDM 5000 Multi Users DB
Reference Design:	PLAN #1	Offset TVD Reference:	Offset Datum

Summary						
Site Name	Reference Measured Depth (usft)	Offset Measured Depth (usft)	Distance Between Centres (usft)	Distance Between Ellipses (usft)	Separation Factor	Warning
Offset Well - Wellbore - Design						
S32-T2N-R68W						
FILE 3H-32H-K268 - OH - FINAL						Out of range
FILE 3Q-32H-K268 - OH - FINAL						Out of range
FILE 3R-32H-K268 - OH - FINAL						Out of range
FILE 3S-32H-K268 - OH - FINAL						Out of range
FILE 3T-32H-K268 - OH - FINAL						Out of range
FILE FED 3I-32H-K268 - OH - FINAL						Out of range
FILE FED 3J-32H-K268 - OH - FINAL						Out of range
FILE FED 3K-32H-K268 - OH - FINAL						Out of range
FILE FED 3K-32H-K268 - OH - PLAN #4						Out of range
FILE FED 3L-32H-K268 - OH - FINAL						Out of range
FILE FED 3M-32H-K268 - OH - FINAL						Out of range
FILE FED 3N-32H-K268 - OH - FINAL						Out of range
FILE FED 3O-32H-K268 - OH - FINAL						Out of range
FILE FED 3P-32H-K268 - OH - FINAL						Out of range
Foster 33-5 - CPR WELL - SURVEYS						Out of range
Foster 43-5 - CPR WELL - SURVEYS						Out of range
Foster 4-5 - CPR WELL - SURVEYS						Out of range
Foster 4-6-5 - CPR WELL - SURVEYS						Out of range
Foster 6-4-5 - CPR - SURVEYS						Out of range
Foster 6-4-5X - CPR WELL - SURVEYS						Out of range
Foster 6-8-5 - CPR WELL - SURVEYS						Out of range
Foster 8-8-5 - CPR WELL - SURVEYS						Out of range
Foster E Unit 1 - CPR - GYRO						Out of range
Gene 11-5 - KERR-MCGEE - GYRO						Out of range
Hankins 1 - KPK WELL - NO SURVEYS						Out of range
Hauck 17-29 - KMG WELL - SURVEYS						Out of range
Hauck 24-29 - KMG WELL - SURVEYS						Out of range
Hauck 7-29 - KMG WELL - SURVEYS						Out of range
HSR-Bryant 9-30A - KMG WELL - GYRO						Out of range
HSR-Williams 10-20 - KMG WELL - GYRO						Out of range
HWY52 4A-32H-O268 - OH - FINAL						Out of range
HWY52 4B-32H-O268 - OH - FINAL						Out of range
HWY52 4C-32H-O268 - OH - FINAL						Out of range
HWY52 4D-32H-O268 - OH - FINAL						Out of range
HWY52 4E-32H-O268 - OH - FINAL						Out of range
HWY52 4F-32H-O268 - OH - FINAL						Out of range
HWY52 4G-32H-O268 - OH - FINAL						Out of range
HWY52 4H-32H-O268 - OH - FINAL						Out of range
HWY52 4I-32H-O268 - OH - FINAL						Out of range
HWY52 4J-32H-O268 - OH - FINAL						Out of range
HWY52 4K-32H-O268 - OH - FINAL						Out of range
HWY52 4L-32H-O268 - OH - FINAL						Out of range
HWY52 4M-32H-O268 - OH - FINAL						Out of range
HWY52 4N-32H-O268 - OH - FINAL						Out of range
HWY52 4O-32H-O268 - OH - FINAL						Out of range
HWY52 4P-32H-O268 - OH - FINAL						Out of range
HWY52 4Q-32H-O268 - OH - FINAL						Out of range
HWY52 4R-32H-O268 - OH - FINAL						Out of range
HWY52 4S-32H-O268 - OH - FINAL						Out of range
HWY52 4T-32H-O268 - OH - FINAL						Out of range
HWY52 4U-32H-O268 - OH - FINAL						Out of range

CC - Min centre to center distance or convergent point, SF - min separation factor, ES - min ellipse separation

Cathedral Energy Services

Anticollision Summary Report

Company:	Crestone Peak Resources	Local Co-ordinate Reference:	Well DREAM WEAVER North 3J-21H-N268 - Slot DREAM WEAVER North 3J-21H-N268 SHL
Project:	DJ BASIN	TVD Reference:	23' KB @ 4924.00usft (Original Well Elev)
Reference Site:	S21-T2N-R68W	MD Reference:	23' KB @ 4924.00usft (Original Well Elev)
Site Error:	0.00 usft	North Reference:	True
Reference Well:	DREAM WEAVER North 3J-21H-N268	Survey Calculation Method:	Minimum Curvature
Well Error:	0.00 usft	Output errors are at	2.00 sigma
Reference Wellbore	OH	Database:	USA EDM 5000 Multi Users DB
Reference Design:	PLAN #1	Offset TVD Reference:	Offset Datum

Summary

Site Name Offset Well - Wellbore - Design	Reference Measured Depth (usft)	Offset Measured Depth (usft)	Distance Between Centres (usft)	Distance Between Ellipses (usft)	Separation Factor	Warning
S32-T2N-R68W						
HWY52 4V-32H-O268 - OH - FINAL						Out of range
HWY52 4W-32H-O268 - OH - FINAL						Out of range
Jack Hein Unit 1 - HS RESOURCES WELL - NO SURVE						Out of range
John Lamar 1 - KPK WELL - NO SURVEYS						Out of range
Johnson 32-30 - KPK WELL - NO SURVEYS						Out of range
Johnson 7-30A - KMG WELL - GYRO						Out of range
Kenneth Koch 1 - KPK WELL - NO SURVEYS						Out of range
Kenyon 34-19 - CPR WELL - SURVEYS						Out of range
Kenyon 4-8-19 - CPR WELL - SURVEYS						Out of range
Kenyon 8-4-19 - CPR WELL - SURVEYS						Out of range
Kenyon 8-6-19 - CPR WELL - SURVEYS						Out of range
Kenyon 8-8-19 - CPR WELL - SURVEYS						Out of range
Koch 41-6 - KPK WELL - NO SURVEYS						Out of range
Koch Kenneth E A-1 - KMG WELL - SURVEY						Out of range
Milton H Nelson H-1 - KMG WELL - GYRO						Out of range
Milton H Nelson I1 - KMG WELL - GYRO						Out of range
Milton H Nelson L1 - KMG WELL - GYRO						Out of range
Milton Nelson K1 - KMG WELL - GYRO						Out of range
Nelson 1 - TEXAS TEA - NO SURVEYS						Out of range
Nelson 1-A - TEXAS TEA WELL - NO SURVEYS						Out of range
Nelson 2 - TEXAS TEA WELL - NO SURVEYS						Out of range
Nelson 3 - TEXAS TEA WELL - NO SURVEYS						Out of range
Nelson 4 - TEXAS TEA WELL - NO SURVEYS						Out of range
Nelson 5 - TEXAS TEA WELL - NO SURVEYS						Out of range
Nelson D2 - KPK WELL - NO SURVEYS						Out of range
Nelson E Unit 1 - CPR WELL - GYRO						Out of range
Nelson E Unit 2 - CPR WELL - GYRO						Out of range
NOAA Federal 11-32 - CPR WELL - GYRO						Out of range
Osarkson 2-8-33 - CPR WELL - SURVEYS						Out of range
Oskarson 13-33 - CPR - GYRO						Out of range
Oskarson 23-33 - CPR WELL - GYRO						Out of range
Oskarson 4 - HRM - NO SURVEYS						Out of range
Oskarson 4-4-33 - CPR WELL - SURVEYS						Out of range
Oskarson 4-6-33 - CPR WELL - SURVEYS						Out of range
Oskarson 4-8-33 - CPR WELL - SURVEYS						Out of range
Oskarson E Unit 1 - CPR WELL - GYRO						Out of range
Paquette 13-5 - KMG WELL - GYRO						Out of range
Paquette 14-5 - KERR-MCGEE - GYRO						Out of range
Rasmussen 10-29 - KMG WELL - SURVEYS						Out of range
Rasmussen 14-29 - KMG WELL - SURVEYS						Out of range
Rasmussen 16-29 - KMG WELL - SURVEYS						Out of range
Rasmussen 19-29 - KMG WELL - SURVEYS						Out of range
Rasmussen 20-29 - KMG WELL - SURVEYS						Out of range
Rasmussen 22-29 - KMG WELL - SURVEYS						Out of range
Rasmussen 23-29 - KMG WELL - SURVEYS						Out of range
Rasmussen 25-29 - KMG WELL - SURVEYS						Out of range
Rasmussen 36-29 - KMG WELL - SURVEYS						Out of range
Rasmussen 37-29 - KMG WELL - SURVEYS						Out of range
Rasmussen 39-29 - KMG WELL - SURVEYS						Out of range
Rasmussen Fed 35-29 - KMG WELL - SURVEYS						Out of range
Ray Nelson 0-4-32 - CPR WELL - SURVEYS						Out of range

CC - Min centre to center distance or convergent point, SF - min separation factor, ES - min ellipse separation

Cathedral Energy Services

Anticollision Summary Report

Company:	Crestone Peak Resources	Local Co-ordinate Reference:	Well DREAM WEAVER North 3J-21H-N268 - Slot DREAM WEAVER North 3J-21H-N268 SHL
Project:	DJ BASIN	TVD Reference:	23' KB @ 4924.00usft (Original Well Elev)
Reference Site:	S21-T2N-R68W	MD Reference:	23' KB @ 4924.00usft (Original Well Elev)
Site Error:	0.00 usft	North Reference:	True
Reference Well:	DREAM WEAVER North 3J-21H-N268	Survey Calculation Method:	Minimum Curvature
Well Error:	0.00 usft	Output errors are at	2.00 sigma
Reference Wellbore	OH	Database:	USA EDM 5000 Multi Users DB
Reference Design:	PLAN #1	Offset TVD Reference:	Offset Datum

Summary						
Site Name	Reference Measured Depth (usft)	Offset Measured Depth (usft)	Distance Between Centres (usft)	Distance Between Ellipses (usft)	Separation Factor	Warning
Offset Well - Wellbore - Design						
S32-T2N-R68W						
Ray Nelson 12-32 - CPR WELL - GYRO						Out of range
Ray Nelson 13-32 - CPR WELL - SURVEYS						Out of range
Ray Nelson 14-32 - CPR WELL - SURVEYS						Out of range
Ray Nelson 23-32 - CPR WELL - GYRO						Out of range
Ray Nelson 24-32 - CPR WELL - SURVEYS						Out of range
Ray Nelson 2-4-32 - CPR WELL - SURVEYS						Out of range
Ray Nelson 33-32 - CPR WELL - SURVEYS						Out of range
Ray Nelson 34-32 - CPR WELL - SURVEYS						Out of range
Ray Nelson 44-32 - CPR WELL - SURVEYS						Out of range
Ray Nelson 4-4-32 - CPR WELL - SURVEYS						Out of range
Ray Nelson 4-6-32 - CPR WELL - SURVEYS						Out of range
Ray Nelson 8-8-32 - CPR WELL - SURVEYS						Out of range
Regnier Farms 32-19 - CPR WELL - GYRO						Out of range
Regnier Farms 33-19 - CPR WELL - GYRO						Out of range
Regnier Farms 42-19 - CPR WELL - GYRO						Out of range
Regnier Farms 43-19 - CPR WELL - SURVEYS						Out of range
Regnier Farms B 2 - CPR WELL - GYRO						Out of range
Regnier Farms B Unit 1 - CPR WELL - GYRO						Out of range
Sawdey Unit 2 - KMG WELL - GYRO						Out of range
Schriner 11-5 - KMG WELL - GYRO						Out of range
Schriner 12-5 - KMG WELL - GYRO						Out of range
SEC Four 12-4 - KMG WELL - SURVEYS						Out of range
SEC Four 13-4 - KMG WELL - SURVEYS						Out of range
SEC Four 14-4 - KMG WELL - SURVEYS						Out of range
SEC Four 21-4 - KMG WELL - SURVEYS						Out of range
SEC Four 22-4 - KMG WELL - SURVEYS						Out of range
SEC Four 31-4 - KMG WELL - SURVEYS						Out of range
SEC Four 32-4 - KMG WELL - SURVEYS						Out of range
SEC Four 33-4 - KMG WELL - SURVEYS						Out of range
SEC Four 3-4 - KMG WELL - SURVEYS						Out of range
SEC Four 35-4 - KMG WELL - SURVEYS						Out of range
SEC Four 4-4 - KMG WELL - SURVEYS						Out of range
SEC Four 5-4 - KMG WELL - SURVEYS						Out of range
SEC Four 6-4 - KMG WELL - SURVEYS						Out of range
Shaw 11-29A - KMG WELL - SURVEYS						Out of range
Shaw 12-29A - KMG - GYRO						Out of range
Shaw 15-20 - KPK - SURVEYS						Out of range
Shaw 16-20 - KPK - SURVEYS						Out of range
Tallgrass 1-8 - KMG - SURVEYS						Out of range
Tallgrass 2-8 - KMG - SURVEYS						Out of range
Tallgrass 3-8 - KMG - SURVEYS						Out of range
Tallgrass 4-8 - KMG - SURVEYS						Out of range
Tallgrass 5-8 - KMG - SURVEYS						Out of range
Tallgrass 6-8 - KMG WELL - SURVEYS						Out of range
Williams 10-20 - KMG WELL - SURVEYS						Out of range
Williams 11-20 - KMG WELL - SURVEYS						Out of range
Williams 13-20 - KMG WELL - SURVEYS						Out of range
Williams 14-20 - KMG WELL - SURVEYS						Out of range
Williams 16-20 - KMG WELL - SURVEYS						Out of range
Williams 18-29 - KMG WELL - SURVEYS						Out of range
Williams 23-20 - KMG WELL - SURVEYS						Out of range

CC - Min centre to center distance or convergent point, SF - min separation factor, ES - min ellipse separation

Cathedral Energy Services

Anticollision Summary Report

Company:	Crestone Peak Resources	Local Co-ordinate Reference:	Well DREAM WEAVER North 3J-21H-N268 - Slot DREAM WEAVER North 3J-21H-N268 SHL
Project:	DJ BASIN	TVD Reference:	23' KB @ 4924.00usft (Original Well Elev)
Reference Site:	S21-T2N-R68W	MD Reference:	23' KB @ 4924.00usft (Original Well Elev)
Site Error:	0.00 usft	North Reference:	True
Reference Well:	DREAM WEAVER North 3J-21H-N268	Survey Calculation Method:	Minimum Curvature
Well Error:	0.00 usft	Output errors are at	2.00 sigma
Reference Wellbore	OH	Database:	USA EDM 5000 Multi Users DB
Reference Design:	PLAN #1	Offset TVD Reference:	Offset Datum

Summary						
Site Name	Reference Measured Depth (usft)	Offset Measured Depth (usft)	Distance Between Centres (usft)	Distance Between Ellipses (usft)	Separation Factor	Warning
Offset Well - Wellbore - Design						
S32-T2N-R68W						
Williams 24-20 - KMG WELL - SURVEYS						Out of range
Williams 24-20X - KMG WELL - SURVEYS						Out of range
Williams 25-20 - KMG WELL - SURVEYS						Out of range
Williams 35-20 - KMG WELL - SURVEYS						Out of range
Williams 36-20 - KMG WELL - SURVEYS						Out of range
Williams 39-20 - KMG WELL - SURVEYS						Out of range
Williams 4-29 - KMG WELL - SURVEYS						Out of range
Williams 7-20 - KMG WELL - SURVEYS						Out of range
Williams 8-20 - KMG WELL - SURVEYS						Out of range
Williams 9-20 - KMG WELL - SURVEYS						Out of range
Woolley 41-7 - CPR WELL - GYRO						Out of range
Woolley 42-7 KPK - KPK WELL - SURVEYS						Out of range

Cathedral Energy Services

Anticollision Summary Report

Company:	Crestone Peak Resources	Local Co-ordinate Reference:	Well DREAM WEAVER North 3J-21H-N268 - Slot DREAM WEAVER North 3J-21H-N268 SHL
Project:	DJ BASIN	TVD Reference:	23' KB @ 4924.00usft (Original Well Elev)
Reference Site:	S21-T2N-R68W	MD Reference:	23' KB @ 4924.00usft (Original Well Elev)
Site Error:	0.00 usft	North Reference:	True
Reference Well:	DREAM WEAVER North 3J-21H-N268	Survey Calculation Method:	Minimum Curvature
Well Error:	0.00 usft	Output errors are at	2.00 sigma
Reference Wellbore	OH	Database:	USA EDM 5000 Multi Users DB
Reference Design:	PLAN #1	Offset TVD Reference:	Offset Datum

Summary

Site Name Offset Well - Wellbore - Design	Reference Measured Depth (usft)	Offset Measured Depth (usft)	Distance Between Centres (usft)	Distance Between Ellipses (usft)	Separation Factor	Warning
S7-T1N-R68W (Woolley-S/B/Morgan Hills)						
BAILEY 8-8-1 (EXISTING) - CPR WELL - SURVEYS						Out of range
BEARDEN 0-6-6 (EXISTING) - CPR WELL - SURVEYS						Out of range
BEARDEN 1 (EXISTING) - CPR WELL - GYRO						Out of range
BEARDEN 13-6 (EXISTING) - CPR WELL - SURVEYS						Out of range
BEARDEN 14-6 (EXISTING) - CPR WELL - SURVEYS						Out of range
BEARDEN 23-6 (EXISTING) - ENCANA WELL - GYRO						Out of range
BEARDEN 24-6 (EXISTING) - CPR WELL - CPR WELL						Out of range
BEARDEN 2-4-6 (EXISTING) - CPR WELL - SURVEYS						Out of range
BEARDEN 2-8-6 (EXISTING) - CPR WELL - SURVEYS						Out of range
BECKY 1 (EXISTING) - FOUNDATION WELL - NO SUR						Out of range
BECKY 2-6 (EXISTING) - EXTRACTION WELL - GYRO						Out of range
BECKY 5-6 (EXISTING) - FOUNDATION WELL - NO SU						Out of range
BECKY 7-6 (EXISTING) - EXTRACTION WELL - GYRO						Out of range
BILLINGS 21-7 (EXISTING) - KPK WELL - SURVEYS						Out of range
BULTHAUP 10-6 (EXISTING) - KMG WELL - SURVEYS						Out of range
BULTHAUP 15-6 (EXISTING) - KMG WELL - GYRO						Out of range
BULTHAUP 17-6 (EXISTING) - KMG WELL - SURVEYS						Out of range
BULTHAUP 21-6 (EXISTING) - KMG WELL - SURVEYS						Out of range
BULTHAUP 23-6 (EXISTING) - KMG WELL - SURVEYS						Out of range
BULTHAUP 27-6 (EXISTING) - KMG WELL - SURVEYS						Out of range
CANYON CREEK 43-13 (EXISTING) - CPR WELL - SUR						Out of range
CANYON CREEK 8-6-13X (EXISTING) - CPR WELL - S						Out of range
CHAMPLIN-86-AMOCO 1 (EXISTING) - AMOCO - SURV						Out of range
COAL CREEK 6-0-19 (EXISTING) - CPR WELL - STK						Out of range
COAL CREEK 6-0-19 (EXISTING) - OH - SURVEYS						Out of range
COMMONS 28-19 (EXISTING) - KMG WELL - SURVEYS						Out of range
ERIE CHAMPLIN 18-9 (EXISTING) - EXISTING - SURVE						Out of range
ERIE CHAMPLIN B UNIT 1 - CPR WELL - GYRO						Out of range
ERIE CHAMPLIN B UNIT 2 - CPR WELL - GYRO						Out of range
I & J 7-6 (EXISTING) - KMG WELL - GYRO						Out of range
Morgan Hills 1A-7H-A168 - HZ - FINAL						Out of range
Morgan Hills 1B-7H-A168 - HZ - FINAL						Out of range
Morgan Hills 1C-7H-A168 - HZ - FINAL						Out of range
Morgan Hills 1D-7H-A168 - HZ - FINAL						Out of range
Morgan Hills 1E-7H-A168 - HZ - FINAL						Out of range
Morgan Hills 1F-7H-A168 - HZ - FINAL						Out of range
Morgan Hills 1G-7H-A168 - HZ - FINAL						Out of range
Morgan Hills 1H-7H-A168 - HZ - FINAL						Out of range
Morgan Hills 1I-7H-A168 - OH - FINAL						Out of range
SOSA 11-18 (EXISTING) - CPR WELL - SURVEYS						Out of range
SOSA 12-18 (EXISTING) - CPR WELL - SURVEYS						Out of range
SOSA 21-18 (EXISTING) - CPR WELL - SURVEYS						Out of range
SOSA 22-18 (EXISTING) - CPR WELL - SURVEYS						Out of range
SOSA A UNIT 1 (EXISTING) - CPR WELL - GYRO						Out of range
TALLGRASS 33-17 (EXISTING) - KMG WELL - SURVEY						Out of range
THOMAS 14-7(EXISTING) - CPR WELL - SURVEYS						Out of range
THOMAS 24-7 (EXISTING) - CPR WELL - SURVEYS						Out of range
THOMAS 2-8-7 (EXISTING) - CPR WELL - SURVEYS						Out of range
THOMAS 33-7 (EXISTING) - CPR WELL - SURVEYS						Out of range
THOMAS 7-12 (EXISTING) - CPR WELL - GYRO						Out of range
Thomas 7-14 (AL) - Existing - NO SURVEYS						Out of range

CC - Min centre to center distance or convergent point, SF - min separation factor, ES - min ellipse separation

Cathedral Energy Services

Anticollision Summary Report

Company:	Crestone Peak Resources	Local Co-ordinate Reference:	Well DREAM WEAVER North 3J-21H-N268 - Slot DREAM WEAVER North 3J-21H-N268 SHL
Project:	DJ BASIN	TVD Reference:	23' KB @ 4924.00usft (Original Well Elev)
Reference Site:	S21-T2N-R68W	MD Reference:	23' KB @ 4924.00usft (Original Well Elev)
Site Error:	0.00 usft	North Reference:	True
Reference Well:	DREAM WEAVER North 3J-21H-N268	Survey Calculation Method:	Minimum Curvature
Well Error:	0.00 usft	Output errors are at	2.00 sigma
Reference Wellbore	OH	Database:	USA EDM 5000 Multi Users DB
Reference Design:	PLAN #1	Offset TVD Reference:	Offset Datum

Summary						
Site Name	Reference Measured Depth (usft)	Offset Measured Depth (usft)	Distance Between Centres (usft)	Distance Between Ellipses (usft)	Separation Factor	Warning
S7-T1N-R68W (Woolley-S/B/Morgan Hills)						
THOMAS E UNIT 1 (EXISTING) - CPR WELL - GYRO						Out of range
THOMAS E UNIT 2 - VESSELS WELL - INC ONLY						Out of range
THOMAS K UNIT 1 (EXISTING) - EXISTING - NO SURV						Out of range
WHEELER G UNIT 1 - CPR - GYRO						Out of range
WIGGETT 13-1 - CPR - GYRO						Out of range
WIGGETT 8-2-13 (EXISTING) - CPR WELL - SURVEYS						Out of range
WOOLLEY 11-7 (EXISTING) - CPR WELL - SURVEYS						Out of range
WOOLLEY 12-7 (EXISTING) - CPR WELL - GYRO						Out of range
WOOLLEY 21-7 (EXISTING) - CPR WELL - GYRO						Out of range
WOOLLEY 22-7 (EXISTING) - CPR WELL - SURVEYS						Out of range
WOOLLEY 2-4-7 (EXISTING) - CPR WELL - SURVEYS						Out of range
WOOLLEY 4-0-7 (EXISTING) - CPR WELL - SURVEYS						Out of range
WOOLLEY 41-7 (EXISTING) - CPR WELL - GYRO						Out of range
WOOLLEY 42-7 (EXISTING) - CPR WELL - GYRO						Out of range
WOOLLEY 42-7 KPK (EXISTING) - KPK WELL - SURVE						Out of range
WOOLLEY A 1-7 (EXISTING) - CPR WELL - GYRO						Out of range
WOOLLEY F UNIT 1 (EXISTING) - CPR WELL - GYRO						Out of range
Woolley-Becky 2A-7H-E168 - Hz - FINAL						Out of range
Woolley-Becky 2B-7H-E168 - Hz - FINAL						Out of range
Woolley-Becky 2C-7H-E168 - Hz - FINAL						Out of range
Woolley-Becky 2D-7H-E168 - Hz - FINAL						Out of range
Woolley-Becky 2E-7H-E168 - Hz - FINAL						Out of range
Woolley-Becky 2F-7H-E168 - Hz - FINAL						Out of range
Woolley-Becky 2G-7H-E168 - Hz - FINAL						Out of range
Woolley-Becky 2H-7H-E168 - Hz - FINAL						Out of range
Woolley-Sosa 2A-7H-E168 - OH - FINAL						Out of range
Woolley-Sosa 2B-7H-E168 - HZ - FINAL						Out of range
Woolley-Sosa 2C-7H-E168 - HZ - FINAL						Out of range
Woolley-Sosa 2D-7H-E168 - HZ - FINAL						Out of range
Woolley-Sosa 2E-7H-E168 - HZ - FINAL						Out of range
Woolley-Sosa 2F-7H-E168 - HZ - FINAL						Out of range
Woolley-Sosa 2G-7H-E168 - HZ - FINAL						Out of range

Cathedral Energy Services

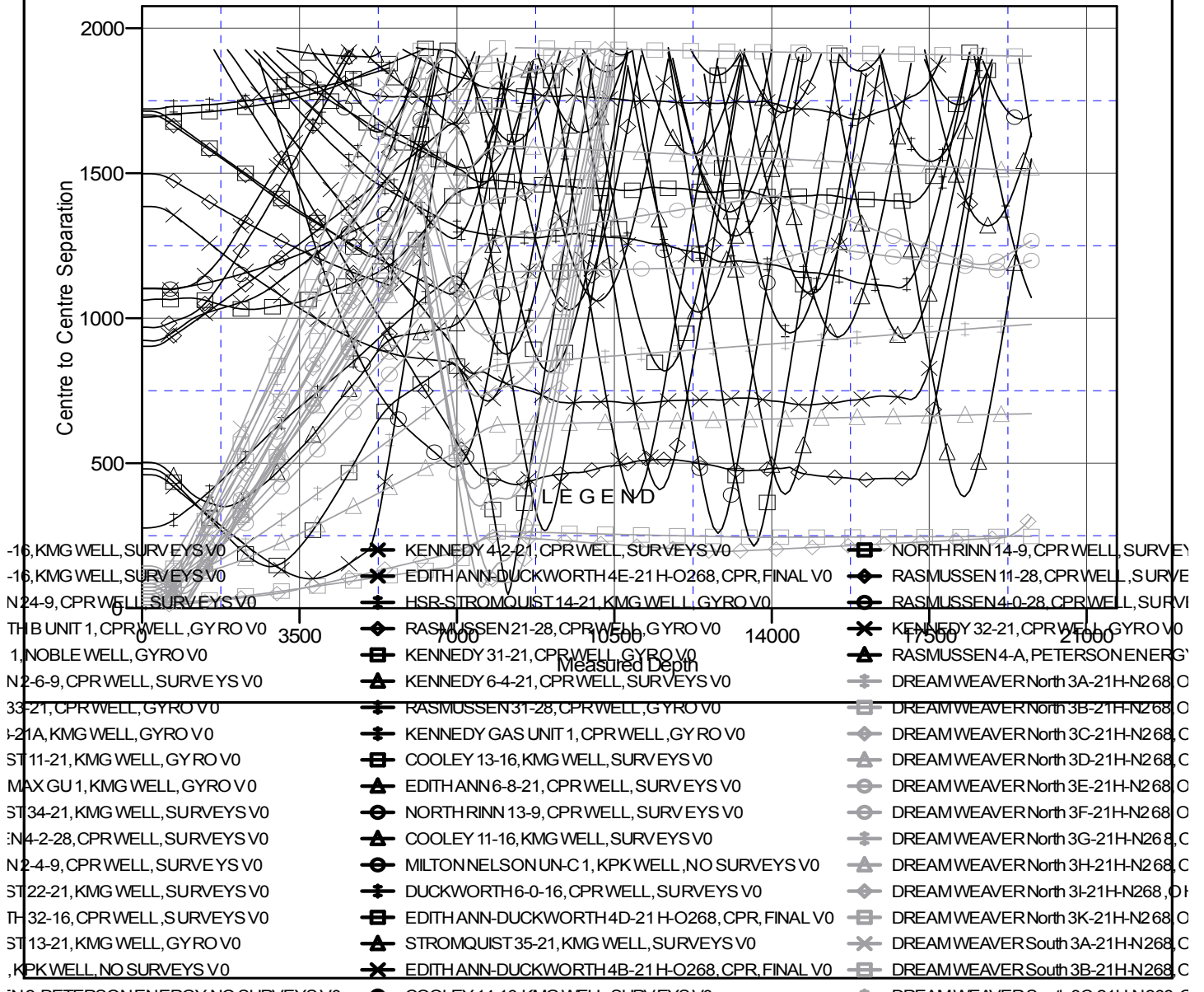
Anticollision Summary Report

Company:	Crestone Peak Resources	Local Co-ordinate Reference:	Well DREAM WEAVER North 3J-21H-N268 - Slot DREAM WEAVER North 3J-21H-N268 SHL
Project:	DJ BASIN	TVD Reference:	23' KB @ 4924.00usft (Original Well Elev)
Reference Site:	S21-T2N-R68W	MD Reference:	23' KB @ 4924.00usft (Original Well Elev)
Site Error:	0.00 usft	North Reference:	True
Reference Well:	DREAM WEAVER North 3J-21H-N268	Survey Calculation Method:	Minimum Curvature
Well Error:	0.00 usft	Output errors are at	2.00 sigma
Reference Wellbore	OH	Database:	USA EDM 5000 Multi Users DB
Reference Design:	PLAN #1	Offset TVD Reference:	Offset Datum

Reference Depths are relative to 23' KB @ 4924.00usft (Original Well E
Offset Depths are relative to Offset Datum
Central Meridian is -105.500000

Coordinates are relative to: DREAM WEAVER North 3J-21H-N268 - Slot DREAM
Coordinate System is US State Plane 1983, Colorado Northern Zone
Grid Convergence at Surface is: 0.32°

Ladder Plot



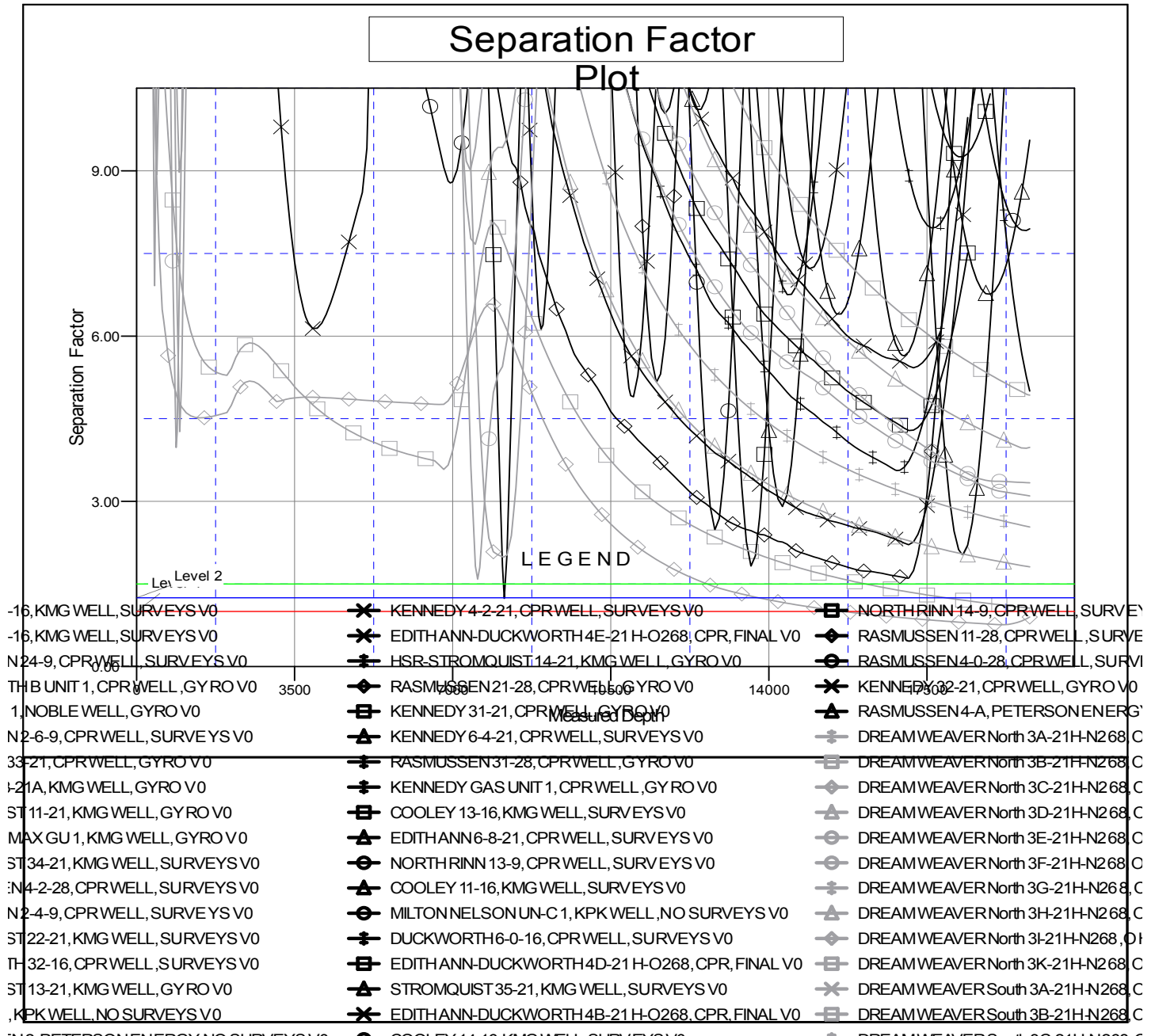
CC - Min centre to center distance or convergent point, SF - min separation factor, ES - min ellipse separation

Cathedral Energy Services
Anticollision Summary Report

Company:	Crestone Peak Resources	Local Co-ordinate Reference:	Well DREAM WEAVER North 3J-21H-N268 - Slot DREAM WEAVER North 3J-21H-N268 SHL
Project:	DJ BASIN	TVD Reference:	23' KB @ 4924.00usft (Original Well Elev)
Reference Site:	S21-T2N-R68W	MD Reference:	23' KB @ 4924.00usft (Original Well Elev)
Site Error:	0.00 usft	North Reference:	True
Reference Well:	DREAM WEAVER North 3J-21H-N268	Survey Calculation Method:	Minimum Curvature
Well Error:	0.00 usft	Output errors are at	2.00 sigma
Reference Wellbore	OH	Database:	USA EDM 5000 Multi Users DB
Reference Design:	PLAN #1	Offset TVD Reference:	Offset Datum

Reference Depths are relative to 23' KB @ 4924.00usft (Original Well E
Offset Depths are relative to Offset Datum
Central Meridian is -105.500000

Coordinates are relative to: DREAM WEAVER North 3J-21H-N268 - Slot DREAM
Coordinate System is US State Plane 1983, Colorado Northern Zone
Grid Convergence at Surface is: 0.32°



CC - Min centre to center distance or convergent point, SF - min separation factor, ES - min ellipse separation