

# **Crestone Peak Resources**

**DJ BASIN**

**S21-T2N-R68W**

**DREAM WEAVER North 3H-21H-N268**

**OH**

**PLAN #1**

## **Anticollision Summary Report**

**23 May, 2018**

# Cathedral Energy Services

## Anticollision Summary Report

<b>Company:</b>	Crestone Peak Resources	<b>Local Co-ordinate Reference:</b>	Well DREAM WEAVER North 3H-21H-N268 - Slot DREAM WEAVER North 3H-21H-N268 SHL
<b>Project:</b>	DJ BASIN	<b>TVD Reference:</b>	23' KB @ 4924.00usft (Original Well Elev)
<b>Reference Site:</b>	S21-T2N-R68W	<b>MD Reference:</b>	23' KB @ 4924.00usft (Original Well Elev)
<b>Site Error:</b>	0.00 usft	<b>North Reference:</b>	True
<b>Reference Well:</b>	DREAM WEAVER North 3H-21H-N268	<b>Survey Calculation Method:</b>	Minimum Curvature
<b>Well Error:</b>	0.00 usft	<b>Output errors are at</b>	2.00 sigma
<b>Reference Wellbore</b>	OH	<b>Database:</b>	USA EDM 5000 Multi Users DB
<b>Reference Design:</b>	PLAN #1	<b>Offset TVD Reference:</b>	Offset Datum

<b>Reference</b>	PLAN #1		
<b>Filter type:</b>	NO GLOBAL FILTER: Using user defined selection & filtering criteria		
<b>Interpolation Method:</b>	MD Interval 100.00usft	<b>Error Model:</b>	ISCWSA
<b>Depth Range:</b>	Unlimited	<b>Scan Method:</b>	Closest Approach 3D
<b>Results Limited by:</b>	Maximum center-center distance of 1,933.21 usft	<b>Error Surface:</b>	Pedal Curve
<b>Warning Levels Evaluated at:</b>	2.00 Sigma	<b>Casing Method:</b>	Not applied

<b>Survey Tool Program</b>	<b>Date</b>	5/23/2018		
<b>From (usft)</b>	<b>To (usft)</b>	<b>Survey (Wellbore)</b>	<b>Tool Name</b>	<b>Description</b>
0.00	2,000.00	PLAN #1 (OH)	VESSI_GYROFLEX	VESSI Gyroflex Gyro
2,001.00	19,529.80	PLAN #1 (OH)	MWD+HDGM	OWSG MWD + HDGM

Site Name	Reference Measured Depth (usft)	Offset Measured Depth (usft)	Distance Between Centres (usft)	Distance Between Ellipses (usft)	Separation Factor	Warning
<b>Offset Well - Wellbore - Design</b>						
S21-T2N-R68W						
DREAM WEAVER North 3A-21H-N268 - OH - PLAN #1	200.00	200.00	85.00	84.51	173.353	CC, ES
DREAM WEAVER North 3A-21H-N268 - OH - PLAN #1	19,529.80	19,655.05	1,599.43	1,217.95	4.193	SF
DREAM WEAVER North 3B-21H-N268 - OH - PLAN #3	419.10	419.14	72.81	71.55	57.662	CC
DREAM WEAVER North 3B-21H-N268 - OH - PLAN #3	500.00	499.85	72.95	71.41	47.192	ES
DREAM WEAVER North 3B-21H-N268 - OH - PLAN #3	19,529.80	19,884.15	1,295.22	914.04	3.398	SF
DREAM WEAVER North 3C-21H-N268 - OH - PLAN #2	562.95	563.03	60.54	58.77	34.215	CC
DREAM WEAVER North 3C-21H-N268 - OH - PLAN #2	600.00	600.00	60.58	58.68	31.913	ES
DREAM WEAVER North 3C-21H-N268 - OH - PLAN #2	19,529.80	19,630.38	1,294.04	906.18	3.336	SF
DREAM WEAVER North 3D-21H-N268 - OH - PLAN #1	747.67	747.98	47.37	44.96	19.611	CC, ES
DREAM WEAVER North 3D-21H-N268 - OH - PLAN #1	19,400.00	19,550.00	879.19	499.11	2.313	SF
DREAM WEAVER North 3E-21H-N268 - OH - PLAN #1	863.33	863.70	34.35	31.53	12.190	CC, ES
DREAM WEAVER North 3E-21H-N268 - OH - PLAN #1	18,600.00	18,629.64	539.80	182.42	1.510	SF
DREAM WEAVER North 3F-21H-N268 - OH - PLAN #1	917.23	917.51	22.53	19.52	7.494	CC, ES
DREAM WEAVER North 3F-21H-N268 - OH - PLAN #1	19,529.80	19,768.12	614.80	249.16	1.681	SF
DREAM WEAVER North 3G-21H-N268 - OH - PLAN #1	999.63	999.93	10.15	6.86	3.086	CC
DREAM WEAVER North 3G-21H-N268 - OH - PLAN #1	19,529.80	19,626.62	352.69	-25.95	0.931	Level 1, ES, SF
DREAM WEAVER North 3I-21H-N268 - OH - PLAN #1	200.00	200.00	12.14	11.65	24.766	CC
DREAM WEAVER North 3I-21H-N268 - OH - PLAN #1	19,529.80	19,633.61	352.69	-25.79	0.932	Level 1, ES, SF
DREAM WEAVER North 3J-21H-N268 - OH - PLAN #1	200.00	200.00	24.29	23.80	49.530	CC, ES
DREAM WEAVER North 3J-21H-N268 - OH - PLAN #1	19,529.80	19,762.82	670.75	300.45	1.811	SF
DREAM WEAVER North 3K-21H-N268 - OH - PLAN #1	200.00	200.00	36.43	35.94	74.295	CC, ES
DREAM WEAVER North 3K-21H-N268 - OH - PLAN #1	19,529.80	19,542.16	719.69	331.05	1.852	SF
DREAM WEAVER South 3A-21H-N268 - OH - PLAN #1	561.95	565.22	18.39	16.60	10.291	CC, ES, SF
DREAM WEAVER South 3B-21H-N268 - OH - PLAN #2	616.90	621.56	22.79	20.80	11.470	CC, ES, SF
DREAM WEAVER South 3C-21H-N268 - OH - PLAN #1	689.85	695.64	36.66	34.41	16.293	CC
DREAM WEAVER South 3C-21H-N268 - OH - PLAN #1	700.00	705.74	36.69	34.40	16.040	ES
DREAM WEAVER South 3C-21H-N268 - OH - PLAN #1	800.00	805.32	40.16	37.49	15.075	SF
DREAM WEAVER South 3D-21H-N268 - OH - PLAN #1	867.97	874.72	30.10	27.22	10.460	CC, ES
DREAM WEAVER South 3D-21H-N268 - OH - PLAN #1	900.00	906.64	30.38	27.39	10.134	SF
DREAM WEAVER South 3E-21H-N268 - OH - PLAN #1	1,293.28	1,301.44	30.12	25.79	6.945	CC, ES
DREAM WEAVER South 3E-21H-N268 - OH - PLAN #1	1,300.00	1,305.01	30.20	25.84	6.931	SF
DREAM WEAVER South 3F-21H-N268 - OH - PLAN #1	1,112.96	1,120.20	30.42	26.70	8.174	CC, ES
DREAM WEAVER South 3F-21H-N268 - OH - PLAN #1	8,317.95	7,392.47	348.06	301.73	7.513	SF
DREAM WEAVER South 3G-21H-N268 - OH - PLAN #1	1,351.32	1,355.53	42.92	38.39	9.466	CC, ES

CC - Min centre to center distance or covergent point, SF - min separation factor, ES - min ellipse separation

# Cathedral Energy Services

## Anticollision Summary Report

<b>Company:</b>	Crestone Peak Resources	<b>Local Co-ordinate Reference:</b>	Well DREAM WEAVER North 3H-21H-N268 - Slot DREAM WEAVER North 3H-21H-N268 SHL
<b>Project:</b>	DJ BASIN	<b>TVD Reference:</b>	23' KB @ 4924.00usft (Original Well Elev)
<b>Reference Site:</b>	S21-T2N-R68W	<b>MD Reference:</b>	23' KB @ 4924.00usft (Original Well Elev)
<b>Site Error:</b>	0.00 usft	<b>North Reference:</b>	True
<b>Reference Well:</b>	DREAM WEAVER North 3H-21H-N268	<b>Survey Calculation Method:</b>	Minimum Curvature
<b>Well Error:</b>	0.00 usft	<b>Output errors are at</b>	2.00 sigma
<b>Reference Wellbore</b>	OH	<b>Database:</b>	USA EDM 5000 Multi Users DB
<b>Reference Design:</b>	PLAN #1	<b>Offset TVD Reference:</b>	Offset Datum

Summary						
Site Name Offset Well - Wellbore - Design	Reference Measured Depth (usft)	Offset Measured Depth (usft)	Distance Between Centres (usft)	Distance Between Ellipses (usft)	Separation Factor	Warning
S21-T2N-R68W						
DREAM WEAVER South 3G-21H-N268 - OH - PLAN #1	8,133.98	7,492.86	159.74	115.06	3.575	SF
DREAM WEAVER South 3H-21H-N268 - OH - PLAN #1	1,298.78	1,302.72	75.24	70.89	17.292	CC
DREAM WEAVER South 3H-21H-N268 - OH - PLAN #1	1,300.00	1,303.88	75.25	70.89	17.275	ES
DREAM WEAVER South 3H-21H-N268 - OH - PLAN #1	7,868.42	7,677.93	159.61	116.48	3.701	SF
DREAM WEAVER South 3I-21H-N268 - OH - PLAN #2	1,202.47	1,205.21	113.99	109.98	28.373	CC, ES
DREAM WEAVER South 3I-21H-N268 - OH - PLAN #2	8,300.00	7,357.45	503.50	457.94	11.053	SF
DREAM WEAVER South 3J-21H-N268 - OH - PLAN #2	1,094.10	1,096.76	138.30	134.66	37.955	CC
DREAM WEAVER South 3J-21H-N268 - OH - PLAN #2	1,100.00	1,102.53	138.31	134.64	37.744	ES
DREAM WEAVER South 3J-21H-N268 - OH - PLAN #2	8,400.00	7,332.29	660.10	612.90	13.984	SF
DREAM WEAVER South 3K-21H-N268 - OH - PLAN #2	810.37	814.39	158.31	155.66	59.572	CC, ES
DREAM WEAVER South 3K-21H-N268 - OH - PLAN #2	8,400.00	7,211.72	863.91	817.94	18.794	SF

# Cathedral Energy Services

## Anticollision Summary Report

<b>Company:</b>	Crestone Peak Resources	<b>Local Co-ordinate Reference:</b>	Well DREAM WEAVER North 3H-21H-N268 - Slot DREAM WEAVER North 3H-21H-N268 SHL
<b>Project:</b>	DJ BASIN	<b>TVD Reference:</b>	23' KB @ 4924.00usft (Original Well Elev)
<b>Reference Site:</b>	S21-T2N-R68W	<b>MD Reference:</b>	23' KB @ 4924.00usft (Original Well Elev)
<b>Site Error:</b>	0.00 usft	<b>North Reference:</b>	True
<b>Reference Well:</b>	DREAM WEAVER North 3H-21H-N268	<b>Survey Calculation Method:</b>	Minimum Curvature
<b>Well Error:</b>	0.00 usft	<b>Output errors are at</b>	2.00 sigma
<b>Reference Wellbore</b>	OH	<b>Database:</b>	USA EDM 5000 Multi Users DB
<b>Reference Design:</b>	PLAN #1	<b>Offset TVD Reference:</b>	Offset Datum

Site Name Offset Well - Wellbore - Design	Reference Measured Depth (usft)	Offset Measured Depth (usft)	Distance Between Centres (usft)	Distance Between Ellipses (usft)	Separation Factor	Warning
<b>S21-T2N-R68W (OFFSETS)</b>						
ARTHUR STROMQUIST 2 - KMG WELL - GYRO	10,098.00	7,280.20	1,251.17	1,190.01	20.458	CC
ARTHUR STROMQUIST 2 - KMG WELL - GYRO	10,100.00	7,280.25	1,251.17	1,189.99	20.448	ES
ARTHUR STROMQUIST 2 - KMG WELL - GYRO	10,300.00	7,285.42	1,267.36	1,203.83	19.948	SF
BLISS 41-21 - KPK WELL - SURVEYS						Out of range
BOULDER CREEK 9-4K8 - SNYDER OIL - NO SURVEY						Out of range
BROWN C UNIT 1 - CPR WELL - GYRO						Out of range
CANINO 1 - HUGHES C W-SOTEXCO 1 - NO SURVEY						Out of range
CHAMPLIN 41-4/1-68/ 1 - KMG WELL - NO SURVEYS						Out of range
CHAMPLIN 86 AMOCO B 2 - KPK WELL - NO SURVEY						Out of range
CHAMPLIN 86 AMOCO UT/Q 1 - KMG WELL - GYRO						Out of range
CHAMPLIN 86 AMOCO-B 1 - KPK WELL - NO SURVEY						Out of range
CHAMPLIN 86 AMOCO-B 3 - KPK WELL - NO SURVEY						Out of range
CHAMPLIN 86 AMOCO-B 4 - KPK WELL - NO SURVEY						Out of range
CHAMPLIN 86 AMOCO-B 5 - KPK WELL - NO SURVEY						Out of range
CHAMPLIN 86 AMOCO-B 6 - KPK WELL - NO SURVEY						Out of range
CHAMPLIN 86 AMOCO-F 5 - KPK WELL - NO SURVEY						Out of range
CHAMPLIN 86 AMOCO-O 9 - KMG WELL - GYRO						Out of range
CHAMPLIN32-4/1-68/ 2 - KMG WELL - NO SURVEYS						Out of range
CHMPLN 86 AMOCO-F 1 - KPK WELL - NO SURVEYS						Out of range
COLCLASURE 42-21 - KPK WELL - NO SURVEYS						Out of range
COOLEY 11-16 - KMG WELL - SURVEYS	14,058.88	7,517.14	214.09	81.08	1.610	CC, ES, SF
COOLEY 12-16 - KMG WELL - SURVEYS	14,016.62	7,459.97	1,099.56	968.25	8.374	CC, ES
COOLEY 12-16 - KMG WELL - SURVEYS	14,100.00	7,460.38	1,102.72	969.97	8.306	SF
COOLEY 13-16 - KMG WELL - SURVEYS	12,547.21	7,371.15	1,232.83	1,129.91	11.979	CC, ES
COOLEY 13-16 - KMG WELL - SURVEYS	12,600.00	7,371.73	1,233.96	1,130.48	11.926	SF
COOLEY 14-16 - KMG WELL - SURVEYS	12,580.55	7,449.95	345.04	241.27	3.325	CC, ES, SF
COOLEY 22-16 - KMG WELL - SURVEYS	14,641.88	7,532.87	471.44	321.91	3.153	CC, ES, SF
COOLEY 23-16 - KMG WELL - SURVEYS	13,370.00	7,500.83	820.77	703.92	7.024	CC
COOLEY 23-16 - KMG WELL - SURVEYS	13,400.00	7,500.55	821.32	703.77	6.987	ES
COOLEY 23-16 - KMG WELL - SURVEYS	13,500.00	7,499.61	831.00	711.84	6.974	SF
COOLEY 35-16 - KMG WELL - SURVEYS	12,133.11	7,393.89	418.83	318.67	4.181	CC, ES, SF
COPPER 31-15 - KMG WELL - SURVEYS						Out of range
CPC 31-4 (1-68) 3 - ANADARKO WELL - NO SURVEYS						Out of range
CPC 42-4 (1-68) 4 - ANADARKO WELL - NO SURVEYS						Out of range
DOMENICO 1 - NOBLE WELL - GYRO	19,529.80	7,263.06	1,879.00	1,760.93	15.914	CC, ES, SF
DUCKWORTH 31-16 - CPR WELL - GYRO	16,699.82	7,489.50	1,549.60	1,385.38	9.437	CC
DUCKWORTH 31-16 - CPR WELL - GYRO	16,700.00	7,489.51	1,549.60	1,385.38	9.436	ES
DUCKWORTH 31-16 - CPR WELL - GYRO	16,800.00	7,491.94	1,552.83	1,387.50	9.392	SF
DUCKWORTH 32-16 - CPR WELL - SURVEYS	15,230.51	7,428.00	1,550.74	1,405.64	10.687	CC, ES
DUCKWORTH 32-16 - CPR WELL - SURVEYS	15,400.00	7,428.87	1,559.98	1,412.36	10.568	SF
DUCKWORTH 33-16 - CPR WELL - SURVEYS	14,171.25	7,469.17	1,560.96	1,420.67	11.127	CC
DUCKWORTH 33-16 - CPR WELL - SURVEYS	14,200.00	7,469.04	1,561.23	1,420.62	11.104	ES
DUCKWORTH 33-16 - CPR WELL - SURVEYS	14,300.00	7,468.57	1,566.26	1,424.90	11.080	SF
DUCKWORTH 41-16 - CPR WELL - SURVEYS						Out of range
DUCKWORTH 43-16 - CPR WELL - GYRO						Out of range
DUCKWORTH 44-16 - CPR WELL - SURVEYS						Out of range
DUCKWORTH 6-0-16 - CPR WELL - SURVEYS						Out of range
DUCKWORTH B UNIT 1 - CPR WELL - GYRO						Out of range
DUCKWORTH B UNIT 2 - CPR WELL - GYRO						Out of range
EAST RINN 0-4-15 - CPR WELL - SURVEYS						Out of range
EAST RINN 13-15 - CPR WELL - SURVEYS						Out of range

CC - Min centre to center distance or convergent point, SF - min separation factor, ES - min ellipse separation

# Cathedral Energy Services

## Anticollision Summary Report

<b>Company:</b>	Crestone Peak Resources	<b>Local Co-ordinate Reference:</b>	Well DREAM WEAVER North 3H-21H-N268 - Slot DREAM WEAVER North 3H-21H-N268 SHL
<b>Project:</b>	DJ BASIN	<b>TVD Reference:</b>	23' KB @ 4924.00usft (Original Well Elev)
<b>Reference Site:</b>	S21-T2N-R68W	<b>MD Reference:</b>	23' KB @ 4924.00usft (Original Well Elev)
<b>Site Error:</b>	0.00 usft	<b>North Reference:</b>	True
<b>Reference Well:</b>	DREAM WEAVER North 3H-21H-N268	<b>Survey Calculation Method:</b>	Minimum Curvature
<b>Well Error:</b>	0.00 usft	<b>Output errors are at</b>	2.00 sigma
<b>Reference Wellbore</b>	OH	<b>Database:</b>	USA EDM 5000 Multi Users DB
<b>Reference Design:</b>	PLAN #1	<b>Offset TVD Reference:</b>	Offset Datum

Site Name Offset Well - Wellbore - Design	Reference Measured Depth (usft)	Offset Measured Depth (usft)	Distance Between Centres (usft)	Distance Between Ellipses (usft)	Separation Factor	Warning
S21-T2N-R68W (OFFSETS)						
EDITH ANN 1 - CPR WELL - GYRO						Out of range
EDITH ANN 33-21 - CPR WELL - GYRO	8,825.70	7,316.04	1,409.82	1,365.62	31.897	CC, ES
EDITH ANN 33-21 - CPR WELL - GYRO	9,200.00	7,317.66	1,458.66	1,410.70	30.410	SF
EDITH ANN 34-21 - CPR WELL - GYRO	4,450.36	4,437.79	1,275.60	1,257.30	69.705	CC
EDITH ANN 34-21 - CPR WELL - GYRO	4,600.00	4,580.60	1,276.24	1,257.11	66.704	ES
EDITH ANN 34-21 - CPR WELL - GYRO	7,600.00	7,284.71	1,306.62	1,272.73	38.560	SF
EDITH ANN 4-21 - CPR WELL - SURVEYS						Out of range
EDITH ANN 44-21 - CPR WELL - GYRO						Out of range
EDITH ANN 6-8-21 - CPR WELL - SURVEYS						Out of range
EDITH ANN 8-8-21 - CPR WELL - SURVEYS						Out of range
EDITH ANN-DUCKWORTH 4A-21H-O268 - CPR - FINAL	16,842.22	17,130.00	985.27	658.81	3.018	CC, ES, SF
EDITH ANN-DUCKWORTH 4B-21H-O268 - CPR - FINAL	10,716.88	11,098.54	1,316.88	1,192.63	10.599	CC
EDITH ANN-DUCKWORTH 4B-21H-O268 - CPR - FINAL	16,854.21	17,237.97	1,342.46	1,017.13	4.126	ES, SF
EDITH ANN-DUCKWORTH 4C-21H-O268 - CPR - FINA	16,594.19	16,767.00	1,691.47	1,373.28	5.316	CC
EDITH ANN-DUCKWORTH 4C-21H-O268 - CPR - FINA	16,600.00	16,767.00	1,691.48	1,373.23	5.315	ES, SF
EDITH ANN-DUCKWORTH 4D-21H-O268 - CPR - FINA						Out of range
EDITH ANN-DUCKWORTH 4E-21H-O268 - CPR - FINAL						Out of range
EDITH ANN-DUCKWORTH 4F-21H-O268 - CPR - FINAL						Out of range
EDITH ANN-DUCKWORTH 4G-21H-O268 - CPR - FINA						Out of range
EDITH ANN-DUCKWORTH 4H-21H-O268 - CPR - FINA						Out of range
ERIE CORP 42-4 - KMG WELL - NO SURVEYS						Out of range
EVERIST 12-10 - KMG WELL - SURVEYS						Out of range
EVERIST 12-10X - KMG WELL - NO SURVEYS						Out of range
EVERIST 13-10 - KMG WELL - SURVEYS						Out of range
EVERIST 33-10 - KMG WELL - SURVEYS						Out of range
FAIRVIEW 1 - EXTRACTION WELL - NO SURVEYS						Out of range
FAIRVIEW 3 - EXTRACTION O&G LLC - SURVEYS						Out of range
FAIRVIEW 4 - EXTRACTION O&G LLC - SURVEYS						Out of range
FAIRVIEW 5 - EXTRACTION O&G LLC - SURVEYS						Out of range
FILE 1-17 - CPR WELL - SURVEYS						Out of range
FILE 31-17 - CPR WELL - SURVEYS						Out of range
FILE 32-17 - CPR WELL - SURVEYS						Out of range
FILE 41-17 - CPR WELL - SURVEYS						Out of range
FILE 42-17 - CPR WELL - NO SURVEYS						Out of range
FILE 4-2-17 - CPR WELL - SURVEYS						Out of range
FILE 42-17X - CPR WELL - SURVEYS						Out of range
FILE 6-0-17 - CPR WELL - SURVEYS						Out of range
FILE 8-2-17 - CPR WELL - SURVEYS	15,851.32	7,626.42	1,819.88	1,663.03	11.602	CC
FILE 8-2-17 - CPR WELL - SURVEYS	15,900.00	7,626.15	1,820.53	1,662.79	11.541	ES
FILE 8-2-17 - CPR WELL - SURVEYS	16,100.00	7,625.06	1,836.79	1,676.16	11.435	SF
FREDERICKS 13-27 - KMG WELL - NO SURVEYS						Out of range
FREDERICKS 13-27X - KMG WELL - SURVEYS						Out of range
GARVER U 34-5JI - KMG WELL - NO SURVEYS						Out of range
HINGLEY 1 - KPK WELL - NO SURVEYS						Out of range
HINGLEY 2 - KPK WELL - NO SUREYS						Out of range
HSR-STROMQUIST 14-21 - KMG WELL - GYRO	0.00	0.00	260.05			
HSR-STROMQUIST 14-21 - KMG WELL - GYRO	7,863.77	7,304.15	286.64	251.42	8.139	ES, SF
JACK A MLEYNEK 2 - KPK WELL - NO SURVEYS						Out of range
JACK MLEYNEK 1 - KPK WELL - NO SURVEYS						Out of range
JACK MLEYNEK 3 - KPK WELL - NO SURVEYS						Out of range
JACK MLEYNEK 4 - KPK WELL - NO SURVEYS						Out of range

CC - Min centre to center distance or convergent point, SF - min separation factor, ES - min ellipse separation

# Cathedral Energy Services

## Anticollision Summary Report

<b>Company:</b>	Crestone Peak Resources	<b>Local Co-ordinate Reference:</b>	Well DREAM WEAVER North 3H-21H-N268 - Slot DREAM WEAVER North 3H-21H-N268 SHL
<b>Project:</b>	DJ BASIN	<b>TVD Reference:</b>	23' KB @ 4924.00usft (Original Well Elev)
<b>Reference Site:</b>	S21-T2N-R68W	<b>MD Reference:</b>	23' KB @ 4924.00usft (Original Well Elev)
<b>Site Error:</b>	0.00 usft	<b>North Reference:</b>	True
<b>Reference Well:</b>	DREAM WEAVER North 3H-21H-N268	<b>Survey Calculation Method:</b>	Minimum Curvature
<b>Well Error:</b>	0.00 usft	<b>Output errors are at</b>	2.00 sigma
<b>Reference Wellbore</b>	OH	<b>Database:</b>	USA EDM 5000 Multi Users DB
<b>Reference Design:</b>	PLAN #1	<b>Offset TVD Reference:</b>	Offset Datum

Summary						
Site Name Offset Well - Wellbore - Design	Reference Measured Depth (usft)	Offset Measured Depth (usft)	Distance Between Centres (usft)	Distance Between Ellipses (usft)	Separation Factor	Warning
S21-T2N-R68W (OFFSETS)						
JACK MLEYNEK 5 - KPK WELL - NO SURVEYS						Out of range
JILLSON 0-6-22 - CPR WELL - SURVEYS						Out of range
JILLSON 1 - KPK WELL - NO SURVEYS						Out of range
JILLSON 11-22 - CPR WELL - GYRO						Out of range
JILLSON 12-22 - CPR WELL - GYRO						Out of range
JILLSON 14-22 - CPR WELL - GYRO						Out of range
JILLSON 3 - KPK WELL - NO SURVEYS						Out of range
JILLSON 5 - KPK WELL - NO SURVEYS						Out of range
JILLSON A 1 - KPK WELL - NO SURVEYS	3,119.20	3,076.38	1,490.19	1,479.17	135.122	CC
JILLSON A 1 - KPK WELL - NO SURVEYS	3,500.00	3,453.52	1,491.13	1,478.13	114.707	ES
JILLSON A 1 - KPK WELL - NO SURVEYS	5,500.00	5,434.28	1,526.19	1,502.00	63.104	SF
JILLSON A 2 - KPK WELL - NO SURVEYS	900.00	875.99	1,721.84	1,718.84	573.862	CC, ES
JILLSON A 2 - KPK WELL - NO SURVEYS	3,400.00	3,354.48	1,927.17	1,914.94	157.600	SF
JILLSON A 3 - KPK WELL - NO SURVEYS						Out of range
JILLSON A 4 - KPK WELL - NO SURVEYS						Out of range
JILLSON-EAST RINN 3A-22H-M268 - CPR WELL - SUR						Out of range
JILLSON-EAST RINN 3B-22H-M268 - CPR WELL - SUR						Out of range
JILLSON-EAST RINN 3C-22H-M268 - CPR WELL - SUR						Out of range
KENNEDY 1 - MACEY & MERSHON WELL - NO SURVE						Out of range
KENNEDY 31-21 - CPR WELL - GYRO	11,384.07	7,331.53	1,425.84	1,345.56	17.761	CC
KENNEDY 31-21 - CPR WELL - GYRO	11,400.00	7,331.44	1,425.93	1,345.42	17.711	ES
KENNEDY 31-21 - CPR WELL - GYRO	11,600.00	7,330.25	1,442.10	1,359.35	17.428	SF
KENNEDY 32-21 - CPR WELL - GYRO	9,888.81	7,318.85	1,659.30	1,601.04	28.480	CC
KENNEDY 32-21 - CPR WELL - GYRO	9,900.00	7,318.96	1,659.34	1,600.92	28.405	ES
KENNEDY 32-21 - CPR WELL - GYRO	10,300.00	7,322.99	1,709.48	1,646.71	27.234	SF
KENNEDY 41-21 - CPR WELL - GYRO						Out of range
KENNEDY 4-2-21 - CPR WELL - SURVEYS	10,705.73	7,368.59	979.34	902.79	12.794	CC, ES
KENNEDY 4-2-21 - CPR WELL - SURVEYS	10,800.00	7,368.51	983.86	905.79	12.602	SF
KENNEDY 6-0-21 - CPR WELL - SURVEYS						Out of range
KENNEDY 6-4-21 - CPR WELL - SURVEYS						Out of range
KENNEDY 8-0-21 - CPR WELL - SURVEYS						Out of range
KENNEDY GAS UNIT 1 - CPR WELL - GYRO						Out of range
LONGMONT 8-10K - TOP OPERATING WELL - NO SUR						Out of range
LONGMONT FARMS 1 - KPK WELL - NO SURVEYS						Out of range
LONGMONT FARMS 3 - KPK WELL - NO SURVEYS						Out of range
MAX SERAFINI 1 - KPK WELL - NO SURVEYS						Out of range
MAX SERAFINI C 1 - KPK WELL - NO SURVEYS						Out of range
MILES 1 - KPK WELL - NO SURVEYS						Out of range
MILES 33-3M - KMG WELL - GYRO						Out of range
MILES 4 - KPK WELL - NO SURVEYS						Out of range
MILES 5 - KPK WELL - NO SURVEYS						Out of range
MILES JOSEPHINE 1 - KPK WELL - NO SURVEYS						Out of range
MILES JOSEPHINE 2 - KPK WELL - NO SURVEYS						Out of range
MILES JOSEPHINE B 1 - KPK WELL - NO SURVEYS						Out of range
MILLER 12-27 - CPR WELL - GYRO						Out of range
MILTON NELSON 1 - KPK WELL - NO SURVEYS	900.00	881.00	884.52	881.18	264.340	CC, ES
MILTON NELSON 1 - KPK WELL - NO SURVEYS	5,200.00	4,960.00	1,462.89	1,439.56	62.712	SF
MILTON NELSON UN-C 1 - KPK WELL - NO SURVEYS	5,151.69	5,100.68	947.25	922.54	38.335	CC
MILTON NELSON UN-C 1 - KPK WELL - NO SURVEYS	5,300.00	5,227.00	947.67	922.01	36.933	ES
MILTON NELSON UN-C 1 - KPK WELL - NO SURVEYS	5,400.00	5,227.00	955.22	928.94	36.344	SF
MILTON NELSON UNIT 1 - KPK WELL - NO SURVEYS	4,304.15	4,257.94	193.37	173.91	9.939	CC

CC - Min centre to center distance or convergent point, SF - min separation factor, ES - min ellipse separation

# Cathedral Energy Services

## Anticollision Summary Report

<b>Company:</b>	Crestone Peak Resources	<b>Local Co-ordinate Reference:</b>	Well DREAM WEAVER North 3H-21H-N268 - Slot DREAM WEAVER North 3H-21H-N268 SHL
<b>Project:</b>	DJ BASIN	<b>TVD Reference:</b>	23' KB @ 4924.00usft (Original Well Elev)
<b>Reference Site:</b>	S21-T2N-R68W	<b>MD Reference:</b>	23' KB @ 4924.00usft (Original Well Elev)
<b>Site Error:</b>	0.00 usft	<b>North Reference:</b>	True
<b>Reference Well:</b>	DREAM WEAVER North 3H-21H-N268	<b>Survey Calculation Method:</b>	Minimum Curvature
<b>Well Error:</b>	0.00 usft	<b>Output errors are at</b>	2.00 sigma
<b>Reference Wellbore</b>	OH	<b>Database:</b>	USA EDM 5000 Multi Users DB
<b>Reference Design:</b>	PLAN #1	<b>Offset TVD Reference:</b>	Offset Datum

Summary						
Site Name Offset Well - Wellbore - Design	Reference Measured Depth (usft)	Offset Measured Depth (usft)	Distance Between Centres (usft)	Distance Between Ellipses (usft)	Separation Factor	Warning
S21-T2N-R68W (OFFSETS)						
MILTON NELSON UNIT 1 - KPK WELL - NO SURVEYS	4,400.00	4,352.87	193.82	173.78	9.673	ES
MILTON NELSON UNIT 1 - KPK WELL - NO SURVEYS	4,900.00	4,848.06	210.22	187.27	9.162	SF
MLEYNEK 28-10M - KMG WELL - GYRO						Out of range
MLEYNEK U 28-10JI - KMG WELL - GYRO						Out of range
MLEYNEK U 28-15JI - KMG WELL - GYRO						Out of range
MORGAN-A 4 - KPK WELL - NO SURVEYS						Out of range
NELSON 42-33 /2-68/ 2 - ANADARKO WELL - NO SURV						Out of range
NELSON DUANE E 41-33 (2-68) 1 - CHAMPLIN PETRO						Out of range
NELSON DUANE E 41-33 (2-68) 1-X - KMG WELL - NO						Out of range
NELSON E UNIT 2 - CPR WELL - GYRO						Out of range
NELSON MILTON H 'D' 1 - KMG WELL - GYRO						Out of range
NELSON MILTON H 'M' 1 - KMG WELL - GYRO						Out of range
NELSON MILTON-F 1 - KPK WELL - NO SURVEYS						Out of range
NORTH RINN 0-4-9 - CPR WELL - SURVEYS	19,529.80	7,611.77	1,745.32	1,527.49	8.012	CC, ES, SF
NORTH RINN 0-6-9 - CPR WELL - SURVEYS	18,653.20	7,384.46	1,737.67	1,539.91	8.787	CC
NORTH RINN 0-6-9 - CPR WELL - SURVEYS	18,700.00	7,383.99	1,738.30	1,539.76	8.756	ES
NORTH RINN 0-6-9 - CPR WELL - SURVEYS	18,800.00	7,382.99	1,743.86	1,544.06	8.728	SF
NORTH RINN 0-8-9 - CPR WELL - SURVEYS	17,340.72	7,536.06	1,725.88	1,539.48	9.259	CC, ES
NORTH RINN 0-8-9 - CPR WELL - SURVEYS	17,400.00	7,534.69	1,726.90	1,540.17	9.249	SF
NORTH RINN 13-9 - CPR WELL - SURVEYS	19,315.37	7,374.17	1,058.40	846.30	4.990	CC, ES
NORTH RINN 13-9 - CPR WELL - SURVEYS	19,400.00	7,374.64	1,061.77	848.56	4.980	SF
NORTH RINN 14-9 - CPR WELL - SURVEYS	17,920.95	7,328.09	1,112.27	925.27	5.948	CC, ES
NORTH RINN 14-9 - CPR WELL - SURVEYS	18,000.00	7,326.88	1,115.08	927.50	5.945	SF
NORTH RINN 24-9 - CPR WELL - SURVEYS	18,038.73	7,380.73	239.68	51.01	1.270	Level 3, CC, ES, SF
NORTH RINN 2-4-9 - CPR WELL - SURVEYS	19,529.80	7,475.77	524.06	353.78	3.078	CC, ES, SF
NORTH RINN 2-6-9 - CPR WELL - SURVEYS	18,569.62	7,269.28	692.58	498.10	3.561	CC, ES
NORTH RINN 2-6-9 - CPR WELL - SURVEYS	18,600.00	7,269.58	693.24	498.43	3.558	SF
OSKARSON 1 - HRM RES II LLC - NO SURVEYS						Out of range
OSKARSON 2 - ENERVEST OP - NO SURVEYS						Out of range
OSKARSON 24-33 - CPR WELL - GYRO						Out of range
OSKARSON 2-8-33 - CPR WELL - SURVEYS						Out of range
OSKARSON 3 - HRM RES II LLC - NO SURVEYS						Out of range
OSKARSON-E 1 - CPR WELL - GYRO						Out of range
OSKARSON-E 2 - CPR WELL - NO SURVEYS						Out of range
RASMUSSEN 3 - PETERSON ENERGY - GYRO						Out of range
RASMUSSEN 1 - PETERSON - GYRO	5,142.35	4,967.00	1,212.63	1,191.96	58.651	CC, ES
RASMUSSEN 1 - PETERSON - GYRO	5,300.00	4,967.00	1,222.84	1,201.82	58.174	SF
RASMUSSEN 11-28 - CPR WELL - SURVEYS	6,629.62	6,877.51	1,342.46	1,289.69	25.440	CC, ES
RASMUSSEN 11-28 - CPR WELL - SURVEYS	6,700.00	6,945.67	1,344.80	1,291.75	25.347	SF
RASMUSSEN 12-28 - CPR WELL - SURVEYS						Out of range
RASMUSSEN 2 - PETERSON ENERGY - NO SURVEYS						Out of range
RASMUSSEN 21-28 - CPR WELL - GYRO	6,655.93	6,612.37	954.72	925.93	33.162	CC, ES
RASMUSSEN 21-28 - CPR WELL - GYRO	6,800.00	6,753.66	969.32	939.87	32.917	SF
RASMUSSEN 22-28 - CPR WELL - GYRO						Out of range
RASMUSSEN 2-4-28 - CPR WELL - SURVEYS						Out of range
RASMUSSEN 31-28 - CPR WELL - GYRO	6,611.95	6,560.72	1,683.72	1,653.36	55.455	CC, ES
RASMUSSEN 31-28 - CPR WELL - GYRO	6,900.00	6,842.43	1,715.72	1,684.24	54.499	SF
RASMUSSEN 32-28 32-28 - CPR WELL - GYRO						Out of range
RASMUSSEN 4-0-28 - CPR WELL - SURVEYS	6,600.00	6,984.68	928.75	870.39	15.914	CC, ES
RASMUSSEN 4-0-28 - CPR WELL - SURVEYS	6,700.00	7,089.46	931.66	872.86	15.845	SF
RASMUSSEN 41-28 - CPR WELL - GYRO						Out of range

CC - Min centre to center distance or convergent point, SF - min separation factor, ES - min ellipse separation

# Cathedral Energy Services

## Anticollision Summary Report

<b>Company:</b>	Crestone Peak Resources	<b>Local Co-ordinate Reference:</b>	Well DREAM WEAVER North 3H-21H-N268 - Slot DREAM WEAVER North 3H-21H-N268 SHL
<b>Project:</b>	DJ BASIN	<b>TVD Reference:</b>	23' KB @ 4924.00usft (Original Well Elev)
<b>Reference Site:</b>	S21-T2N-R68W	<b>MD Reference:</b>	23' KB @ 4924.00usft (Original Well Elev)
<b>Site Error:</b>	0.00 usft	<b>North Reference:</b>	True
<b>Reference Well:</b>	DREAM WEAVER North 3H-21H-N268	<b>Survey Calculation Method:</b>	Minimum Curvature
<b>Well Error:</b>	0.00 usft	<b>Output errors are at</b>	2.00 sigma
<b>Reference Wellbore</b>	OH	<b>Database:</b>	USA EDM 5000 Multi Users DB
<b>Reference Design:</b>	PLAN #1	<b>Offset TVD Reference:</b>	Offset Datum

Summary						
Site Name Offset Well - Wellbore - Design	Reference Measured Depth (usft)	Offset Measured Depth (usft)	Distance Between Centres (usft)	Distance Between Ellipses (usft)	Separation Factor	Warning
S21-T2N-R68W (OFFSETS)						
RASMUSSEN 42-28 - CPR WELL - SURVEYS						Out of range
RASMUSSEN 4-2-28 - CPR WELL - SURVEYS	6,648.43	6,761.00	1,863.45	1,821.80	44.737	CC, ES
RASMUSSEN 4-2-28 - CPR WELL - SURVEYS	6,800.00	6,911.32	1,877.38	1,835.20	44.505	SF
RASMUSSEN 4-4-28 - CPR WELL - SURVEYS						Out of range
RASMUSSEN 44-29 - KPK WELL - NO SURVEYS						Out of range
RASMUSSEN 4-A - PETERSON ENERGY - GYRO	5,186.19	4,960.00	1,625.51	1,604.23	76.392	CC, ES
RASMUSSEN 4-A - PETERSON ENERGY - GYRO	5,500.00	4,960.00	1,655.52	1,633.35	74.682	SF
RASMUSSEN C" 2" - CPR WELL - GYRO						Out of range
RASMUSSEN-C-UNIT 1 - CPR WELL - GYRO	6,635.48	6,554.30	1,734.70	1,705.61	59.629	CC, ES
RASMUSSEN-C-UNIT 1 - CPR WELL - GYRO	6,800.00	6,711.57	1,750.93	1,721.11	58.724	SF
RODGERS 1 - KPK WELL - NO SURVEYS						Out of range
SAUNDERS TRUST 8-2K8 - EXTRACTION WELL - NO						Out of range
SCHLAGEL 2 - EXTRACTION WELL - NO SURVEYS						Out of range
SERAFINI E MAX GU 1 - KMG WELL - GYRO	12,974.24	7,274.86	673.31	568.88	6.447	CC, ES
SERAFINI E MAX GU 1 - KMG WELL - GYRO	13,000.00	7,274.18	673.80	569.02	6.431	SF
SERAFINI-B 2 - KPK WELL - NO SURVEYS						Out of range
SHAW 1 - KPK WELL - NO SURVEYS						Out of range
SHAW 15-20 - KPK - SURVEYS						Out of range
SHAW 16-20 - KPK - SURVEYS						Out of range
STROMQUIST 1 - KPK WELL - NO SURVEYS						Out of range
STROMQUIST 11-21 - KMG WELL - GYRO	8,720.33	7,303.41	321.83	278.99	7.513	CC, ES, SF
STROMQUIST 13-21 - KMG WELL - GYRO	5,345.15	5,289.17	765.82	742.60	32.985	CC
STROMQUIST 13-21 - KMG WELL - GYRO	5,400.00	5,337.90	766.04	742.51	32.562	ES
STROMQUIST 13-21 - KMG WELL - GYRO	7,300.00	7,180.92	883.06	850.25	26.913	SF
STROMQUIST 22-21 - KMG WELL - SURVEYS	9,252.68	7,402.38	438.60	384.07	8.044	CC, ES
STROMQUIST 22-21 - KMG WELL - SURVEYS	9,300.00	7,404.40	441.14	385.50	7.929	SF
STROMQUIST 23-21 - KMG WELL - SURVEYS	2,667.82	2,635.74	345.57	335.44	34.117	CC
STROMQUIST 23-21 - KMG WELL - SURVEYS	2,700.00	2,666.79	345.66	335.41	33.721	ES
STROMQUIST 23-21 - KMG WELL - SURVEYS	8,000.00	7,345.88	644.07	605.97	16.902	SF
STROMQUIST 34-21 - KMG WELL - SURVEYS	100.00	88.95	1,100.36	1,100.13	4,701.263	CC
STROMQUIST 34-21 - KMG WELL - SURVEYS	300.00	286.15	1,100.81	1,099.78	1,069.921	ES
STROMQUIST 34-21 - KMG WELL - SURVEYS	7,000.00	7,011.12	1,726.58	1,690.10	47.322	SF
STROMQUIST 35-21 - KMG WELL - SURVEYS	2,166.71	2,102.51	448.45	439.84	52.061	CC, ES
STROMQUIST 35-21 - KMG WELL - SURVEYS	6,700.00	6,727.40	487.94	454.03	14.391	SF
TRAVELERS 28-11M - KMG WELL - GYRO						Out of range
TRAVELERS U 28-13DI - KMG WELL - GYRO						Out of range
UPRC 33-1M - KMG WELL - GYRO						Out of range
UPRR 43 PAN AM-B 7 - KPK WELL - NO SURVEYS						Out of range
WESTERN 3-21A - KMG WELL - GYRO	11,281.08	7,282.83	193.17	114.55	2.457	CC, ES, SF
WILDFLOWER 12-27 - KMG WELL - SURVEYS						Out of range
WILDFLOWER 33-27 - KMG WELL - SURVEYS						Out of range
WOOLEY UNIT 1 - KPK WELL - NO SURVEYS						Out of range

CC - Min centre to center distance or convergent point, SF - min separation factor, ES - min ellipse separation

# Cathedral Energy Services

## Anticollision Summary Report

<b>Company:</b>	Crestone Peak Resources	<b>Local Co-ordinate Reference:</b>	Well DREAM WEAVER North 3H-21H-N268 - Slot DREAM WEAVER North 3H-21H-N268 SHL
<b>Project:</b>	DJ BASIN	<b>TVD Reference:</b>	23' KB @ 4924.00usft (Original Well Elev)
<b>Reference Site:</b>	S21-T2N-R68W	<b>MD Reference:</b>	23' KB @ 4924.00usft (Original Well Elev)
<b>Site Error:</b>	0.00 usft	<b>North Reference:</b>	True
<b>Reference Well:</b>	DREAM WEAVER North 3H-21H-N268	<b>Survey Calculation Method:</b>	Minimum Curvature
<b>Well Error:</b>	0.00 usft	<b>Output errors are at</b>	2.00 sigma
<b>Reference Wellbore</b>	OH	<b>Database:</b>	USA EDM 5000 Multi Users DB
<b>Reference Design:</b>	PLAN #1	<b>Offset TVD Reference:</b>	Offset Datum

Summary						
Site Name	Reference Measured Depth (usft)	Offset Measured Depth (usft)	Distance Between Centres (usft)	Distance Between Ellipses (usft)	Separation Factor	Warning
<b>Offset Well - Wellbore - Design</b>						
S32-T2N-R68W						
Anderson 22-32 - KPK WELL - NO SURVEYS						Out of range
Anderson 32-32 - CPR WELL - SURVEYS						Out of range
Anderson 41-32 - CPR - GYRO						Out of range
Anderson 4-2-32 - CPR WELL - SURVEYS						Out of range
Anderson 6-4-32 - CPR WELL - SURVEYS						Out of range
Anderson Trust 1 - KPK - NO SURVEYS						Out of range
Anderson Trust 1 A - CPR WELL - GYRO						Out of range
Anderson Trust 2-A - CPR WELL - NO SURVEYS						Out of range
Anderson Trust 32-2 - CPR WELL - GYRO						Out of range
Anderson Trust 32-8 - CPR WELL - GYRO						Out of range
Anderson Trust C 1 - CPR WELL - SURVEYS						Out of range
Anderson Trust C Unit 2 - CPR WELL - GYRO						Out of range
Brown 22-5 - CPR WELL - GYRO						Out of range
Brown 31-5 - CPR WELL - SURVEYS						Out of range
Brown 41-5 - CPR WELL - SURVEYS						Out of range
Brown 5-3 - CPR WELL - GYRO						Out of range
Brown 5-5 - CPR WELL - GYRO						Out of range
Brown C Unit 1 - CPR WELL - GYRO						Out of range
Brown C Unit 2 - CPR WELL - GYRO						Out of range
Bryant 10-30 - KMG WELL - SURVEYS						Out of range
Bryant 16-30 - KMG WELL - SURVEYS						Out of range
Bryant 20-30 - KMG WELL - SURVEYS						Out of range
Bryant 23-30 - KMG WELL - SURVEYS						Out of range
Bryant 24-30 - KMG WELL - SURVEYS						Out of range
Bryant 33-29 - KMG WELL - SURVEYS						Out of range
Bryant 36-30 - KMG WELL - SURVEYS						Out of range
Bryant 8-30 - KMG WELL - SURVEYS						Out of range
Bryant Federal 37-30 - KMG WELL - SURVEYS						Out of range
Bulthaup 1-6 - KMG WELL - GYRO						Out of range
Bulthaup 16-6 - KMG WELL - SURVEYS						Out of range
Bulthaup 17-6 - KMG WELL - SURVEYS						Out of range
Bulthaup 24-6 - KMG WELL - SURVEYS						Out of range
Bulthaup 27-6 - KMG WELL - SURVEYS						Out of range
Bulthaup 39-6 - KMG WELL - SURVEYS						Out of range
Bulthaup 40-6 - KMG WELL - SURVEYS						Out of range
Bulthaup 8-6 - KMG WELL - GYRO						Out of range
Bulthaup 9-6 - KMG WELL - SURVEYS						Out of range
Canino 1-X - HUGHES CW - NO SURVEYS						Out of range
Champlin 86 Amoco F 6 - KPK - NO SURVEYS						Out of range
Champlin 86 N 1 - KMG WELL - GYRO						Out of range
Champlin Amoco 86 F 7 - KPK WELL - SURVEYS						Out of range
Cinque 1 - FOUNDATION WELL - NO SURVEYS						Out of range
Cinque 2 - FOUNDATION WELL - NO SURVEYS						Out of range
Cinque 4 - FOUNDATION WELL - NO SURVEYS						Out of range
FILE 3A-32H-K268 - OH - FINAL						Out of range
FILE 3B-32H-K268 - OH - FINAL						Out of range
FILE 3C-32H-K268 - OH - FINAL						Out of range
FILE 3D-32H-K268 - OH - FINAL						Out of range
FILE 3E-32H-K268 - OH - FINAL						Out of range
FILE 3F-32H-K268 - OH - FINAL						Out of range
FILE 3G-32H-K268 - OH - FINAL						Out of range

CC - Min centre to center distance or convergent point, SF - min separation factor, ES - min ellipse separation

# Cathedral Energy Services

## Anticollision Summary Report

<b>Company:</b>	Crestone Peak Resources	<b>Local Co-ordinate Reference:</b>	Well DREAM WEAVER North 3H-21H-N268 - Slot DREAM WEAVER North 3H-21H-N268 SHL
<b>Project:</b>	DJ BASIN	<b>TVD Reference:</b>	23' KB @ 4924.00usft (Original Well Elev)
<b>Reference Site:</b>	S21-T2N-R68W	<b>MD Reference:</b>	23' KB @ 4924.00usft (Original Well Elev)
<b>Site Error:</b>	0.00 usft	<b>North Reference:</b>	True
<b>Reference Well:</b>	DREAM WEAVER North 3H-21H-N268	<b>Survey Calculation Method:</b>	Minimum Curvature
<b>Well Error:</b>	0.00 usft	<b>Output errors are at</b>	2.00 sigma
<b>Reference Wellbore</b>	OH	<b>Database:</b>	USA EDM 5000 Multi Users DB
<b>Reference Design:</b>	PLAN #1	<b>Offset TVD Reference:</b>	Offset Datum

Site Name Offset Well - Wellbore - Design	Reference Measured Depth (usft)	Offset Measured Depth (usft)	Distance Between Centres (usft)	Distance Between Ellipses (usft)	Separation Factor	Warning
S32-T2N-R68W						
FILE 3H-32H-K268 - OH - FINAL						Out of range
FILE 3Q-32H-K268 - OH - FINAL						Out of range
FILE 3R-32H-K268 - OH - FINAL						Out of range
FILE 3S-32H-K268 - OH - FINAL						Out of range
FILE 3T-32H-K268 - OH - FINAL						Out of range
FILE FED 3I-32H-K268 - OH - FINAL						Out of range
FILE FED 3J-32H-K268 - OH - FINAL						Out of range
FILE FED 3K-32H-K268 - OH - FINAL						Out of range
FILE FED 3K-32H-K268 - OH - PLAN #4						Out of range
FILE FED 3L-32H-K268 - OH - FINAL						Out of range
FILE FED 3M-32H-K268 - OH - FINAL						Out of range
FILE FED 3N-32H-K268 - OH - FINAL						Out of range
FILE FED 3O-32H-K268 - OH - FINAL						Out of range
FILE FED 3P-32H-K268 - OH - FINAL						Out of range
Foster 33-5 - CPR WELL - SURVEYS						Out of range
Foster 43-5 - CPR WELL - SURVEYS						Out of range
Foster 4-5 - CPR WELL - SURVEYS						Out of range
Foster 4-6-5 - CPR WELL - SURVEYS						Out of range
Foster 6-4-5 - CPR - SURVEYS						Out of range
Foster 6-4-5X - CPR WELL - SURVEYS						Out of range
Foster 6-8-5 - CPR WELL - SURVEYS						Out of range
Foster 8-8-5 - CPR WELL - SURVEYS						Out of range
Foster E Unit 1 - CPR - GYRO						Out of range
Gene 11-5 - KERR-MCGEE - GYRO						Out of range
Hankins 1 - KPK WELL - NO SURVEYS						Out of range
Hauck 17-29 - KMG WELL - SURVEYS						Out of range
Hauck 24-29 - KMG WELL - SURVEYS						Out of range
Hauck 7-29 - KMG WELL - SURVEYS						Out of range
HSR-Bryant 9-30A - KMG WELL - GYRO						Out of range
HSR-Williams 10-20 - KMG WELL - GYRO						Out of range
HWY52 4A-32H-O268 - OH - FINAL						Out of range
HWY52 4B-32H-O268 - OH - FINAL						Out of range
HWY52 4C-32H-O268 - OH - FINAL						Out of range
HWY52 4D-32H-O268 - OH - FINAL						Out of range
HWY52 4E-32H-O268 - OH - FINAL						Out of range
HWY52 4F-32H-O268 - OH - FINAL						Out of range
HWY52 4G-32H-O268 - OH - FINAL						Out of range
HWY52 4H-32H-O268 - OH - FINAL						Out of range
HWY52 4I-32H-O268 - OH - FINAL						Out of range
HWY52 4J-32H-O268 - OH - FINAL						Out of range
HWY52 4K-32H-O268 - OH - FINAL						Out of range
HWY52 4L-32H-O268 - OH - FINAL						Out of range
HWY52 4M-32H-O268 - OH - FINAL						Out of range
HWY52 4N-32H-O268 - OH - FINAL						Out of range
HWY52 4O-32H-O268 - OH - FINAL						Out of range
HWY52 4P-32H-O268 - OH - FINAL						Out of range
HWY52 4Q-32H-O268 - OH - FINAL						Out of range
HWY52 4R-32H-O268 - OH - FINAL						Out of range
HWY52 4S-32H-O268 - OH - FINAL						Out of range
HWY52 4T-32H-O268 - OH - FINAL						Out of range
HWY52 4U-32H-O268 - OH - FINAL						Out of range

CC - Min centre to center distance or convergent point, SF - min separation factor, ES - min ellipse separation

# Cathedral Energy Services

## Anticollision Summary Report

<b>Company:</b>	Crestone Peak Resources	<b>Local Co-ordinate Reference:</b>	Well DREAM WEAVER North 3H-21H-N268 - Slot DREAM WEAVER North 3H-21H-N268 SHL
<b>Project:</b>	DJ BASIN	<b>TVD Reference:</b>	23' KB @ 4924.00usft (Original Well Elev)
<b>Reference Site:</b>	S21-T2N-R68W	<b>MD Reference:</b>	23' KB @ 4924.00usft (Original Well Elev)
<b>Site Error:</b>	0.00 usft	<b>North Reference:</b>	True
<b>Reference Well:</b>	DREAM WEAVER North 3H-21H-N268	<b>Survey Calculation Method:</b>	Minimum Curvature
<b>Well Error:</b>	0.00 usft	<b>Output errors are at</b>	2.00 sigma
<b>Reference Wellbore</b>	OH	<b>Database:</b>	USA EDM 5000 Multi Users DB
<b>Reference Design:</b>	PLAN #1	<b>Offset TVD Reference:</b>	Offset Datum

Site Name	Reference Measured Depth (usft)	Offset Measured Depth (usft)	Distance Between Centres (usft)	Distance Between Ellipses (usft)	Separation Factor	Warning
<b>Summary</b>						
<b>Offset Well - Wellbore - Design</b>						
S32-T2N-R68W						
HWY52 4V-32H-O268 - OH - FINAL						Out of range
HWY52 4W-32H-O268 - OH - FINAL						Out of range
Jack Hein Unit 1 - HS RESOURCES WELL - NO SURVE						Out of range
John Lamar 1 - KPK WELL - NO SURVEYS						Out of range
Johnson 32-30 - KPK WELL - NO SURVEYS						Out of range
Johnson 7-30A - KMG WELL - GYRO						Out of range
Kenneth Koch 1 - KPK WELL - NO SURVEYS						Out of range
Kenyon 34-19 - CPR WELL - SURVEYS						Out of range
Kenyon 4-8-19 - CPR WELL - SURVEYS						Out of range
Kenyon 8-4-19 - CPR WELL - SURVEYS						Out of range
Kenyon 8-6-19 - CPR WELL - SURVEYS						Out of range
Kenyon 8-8-19 - CPR WELL - SURVEYS						Out of range
Koch 41-6 - KPK WELL - NO SURVEYS						Out of range
Koch Kenneth E A-1 - KMG WELL - SURVEY						Out of range
Milton H Nelson H-1 - KMG WELL - GYRO						Out of range
Milton H Nelson I1 - KMG WELL - GYRO						Out of range
Milton H Nelson L1 - KMG WELL - GYRO						Out of range
Milton Nelson K1 - KMG WELL - GYRO						Out of range
Nelson 1 - TEXAS TEA - NO SURVEYS						Out of range
Nelson 1-A - TEXAS TEA WELL - NO SURVEYS						Out of range
Nelson 2 - TEXAS TEA WELL - NO SURVEYS						Out of range
Nelson 3 - TEXAS TEA WELL - NO SURVEYS						Out of range
Nelson 4 - TEXAS TEA WELL - NO SURVEYS						Out of range
Nelson 5 - TEXAS TEA WELL - NO SURVEYS						Out of range
Nelson D2 - KPK WELL - NO SURVEYS						Out of range
Nelson E Unit 1 - CPR WELL - GYRO						Out of range
Nelson E Unit 2 - CPR WELL - GYRO						Out of range
NOAA Federal 11-32 - CPR WELL - GYRO						Out of range
Osarkson 2-8-33 - CPR WELL - SURVEYS						Out of range
Oskarson 13-33 - CPR - GYRO						Out of range
Oskarson 23-33 - CPR WELL - GYRO						Out of range
Oskarson 4 - HRM - NO SURVEYS						Out of range
Oskarson 4-4-33 - CPR WELL - SURVEYS						Out of range
Oskarson 4-6-33 - CPR WELL - SURVEYS						Out of range
Oskarson 4-8-33 - CPR WELL - SURVEYS						Out of range
Oskarson E Unit 1 - CPR WELL - GYRO						Out of range
Paquette 13-5 - KMG WELL - GYRO						Out of range
Paquette 14-5 - KERR-MCGEE - GYRO						Out of range
Rasmussen 10-29 - KMG WELL - SURVEYS						Out of range
Rasmussen 14-29 - KMG WELL - SURVEYS						Out of range
Rasmussen 16-29 - KMG WELL - SURVEYS						Out of range
Rasmussen 19-29 - KMG WELL - SURVEYS						Out of range
Rasmussen 20-29 - KMG WELL - SURVEYS						Out of range
Rasmussen 22-29 - KMG WELL - SURVEYS						Out of range
Rasmussen 23-29 - KMG WELL - SURVEYS						Out of range
Rasmussen 25-29 - KMG WELL - SURVEYS						Out of range
Rasmussen 36-29 - KMG WELL - SURVEYS						Out of range
Rasmussen 37-29 - KMG WELL - SURVEYS						Out of range
Rasmussen 39-29 - KMG WELL - SURVEYS						Out of range
Rasmussen Fed 35-29 - KMG WELL - SURVEYS						Out of range
Ray Nelson 0-4-32 - CPR WELL - SURVEYS						Out of range

CC - Min centre to center distance or convergent point, SF - min separation factor, ES - min ellipse separation

# Cathedral Energy Services

## Anticollision Summary Report

<b>Company:</b>	Crestone Peak Resources	<b>Local Co-ordinate Reference:</b>	Well DREAM WEAVER North 3H-21H-N268 - Slot DREAM WEAVER North 3H-21H-N268 SHL
<b>Project:</b>	DJ BASIN	<b>TVD Reference:</b>	23' KB @ 4924.00usft (Original Well Elev)
<b>Reference Site:</b>	S21-T2N-R68W	<b>MD Reference:</b>	23' KB @ 4924.00usft (Original Well Elev)
<b>Site Error:</b>	0.00 usft	<b>North Reference:</b>	True
<b>Reference Well:</b>	DREAM WEAVER North 3H-21H-N268	<b>Survey Calculation Method:</b>	Minimum Curvature
<b>Well Error:</b>	0.00 usft	<b>Output errors are at</b>	2.00 sigma
<b>Reference Wellbore</b>	OH	<b>Database:</b>	USA EDM 5000 Multi Users DB
<b>Reference Design:</b>	PLAN #1	<b>Offset TVD Reference:</b>	Offset Datum

Site Name	Reference Measured Depth (usft)	Offset Measured Depth (usft)	Distance Between Centres (usft)	Distance Between Ellipses (usft)	Separation Factor	Warning
<b>Summary</b>						
<b>Offset Well - Wellbore - Design</b>						
S32-T2N-R68W						
Ray Nelson 12-32 - CPR WELL - GYRO						Out of range
Ray Nelson 13-32 - CPR WELL - SURVEYS						Out of range
Ray Nelson 14-32 - CPR WELL - SURVEYS						Out of range
Ray Nelson 23-32 - CPR WELL - GYRO						Out of range
Ray Nelson 24-32 - CPR WELL - SURVEYS						Out of range
Ray Nelson 2-4-32 - CPR WELL - SURVEYS						Out of range
Ray Nelson 33-32 - CPR WELL - SURVEYS						Out of range
Ray Nelson 34-32 - CPR WELL - SURVEYS						Out of range
Ray Nelson 44-32 - CPR WELL - SURVEYS						Out of range
Ray Nelson 4-4-32 - CPR WELL - SURVEYS						Out of range
Ray Nelson 4-6-32 - CPR WELL - SURVEYS						Out of range
Ray Nelson 8-8-32 - CPR WELL - SURVEYS						Out of range
Regnier Farms 32-19 - CPR WELL - GYRO						Out of range
Regnier Farms 33-19 - CPR WELL - GYRO						Out of range
Regnier Farms 42-19 - CPR WELL - GYRO						Out of range
Regnier Farms 43-19 - CPR WELL - SURVEYS						Out of range
Regnier Farms B 2 - CPR WELL - GYRO						Out of range
Regnier Farms B Unit 1 - CPR WELL - GYRO						Out of range
Sawdey Unit 2 - KMG WELL - GYRO						Out of range
Schriner 11-5 - KMG WELL - GYRO						Out of range
Schriner 12-5 - KMG WELL - GYRO						Out of range
SEC Four 12-4 - KMG WELL - SURVEYS						Out of range
SEC Four 13-4 - KMG WELL - SURVEYS						Out of range
SEC Four 14-4 - KMG WELL - SURVEYS						Out of range
SEC Four 21-4 - KMG WELL - SURVEYS						Out of range
SEC Four 22-4 - KMG WELL - SURVEYS						Out of range
SEC Four 31-4 - KMG WELL - SURVEYS						Out of range
SEC Four 32-4 - KMG WELL - SURVEYS						Out of range
SEC Four 33-4 - KMG WELL - SURVEYS						Out of range
SEC Four 3-4 - KMG WELL - SURVEYS						Out of range
SEC Four 35-4 - KMG WELL - SURVEYS						Out of range
SEC Four 4-4 - KMG WELL - SURVEYS						Out of range
SEC Four 5-4 - KMG WELL - SURVEYS						Out of range
SEC Four 6-4 - KMG WELL - SURVEYS						Out of range
Shaw 11-29A - KMG WELL - SURVEYS						Out of range
Shaw 12-29A - KMG - GYRO						Out of range
Shaw 15-20 - KPK - SURVEYS						Out of range
Shaw 16-20 - KPK - SURVEYS						Out of range
Tallgrass 1-8 - KMG - SURVEYS						Out of range
Tallgrass 2-8 - KMG - SURVEYS						Out of range
Tallgrass 3-8 - KMG - SURVEYS						Out of range
Tallgrass 4-8 - KMG - SURVEYS						Out of range
Tallgrass 5-8 - KMG - SURVEYS						Out of range
Tallgrass 6-8 - KMG WELL - SURVEYS						Out of range
Williams 10-20 - KMG WELL - SURVEYS						Out of range
Williams 11-20 - KMG WELL - SURVEYS						Out of range
Williams 13-20 - KMG WELL - SURVEYS						Out of range
Williams 14-20 - KMG WELL - SURVEYS						Out of range
Williams 16-20 - KMG WELL - SURVEYS						Out of range
Williams 18-29 - KMG WELL - SURVEYS						Out of range
Williams 23-20 - KMG WELL - SURVEYS						Out of range

CC - Min centre to center distance or convergent point, SF - min separation factor, ES - min ellipse separation

# Cathedral Energy Services

## Anticollision Summary Report

<b>Company:</b>	Crestone Peak Resources	<b>Local Co-ordinate Reference:</b>	Well DREAM WEAVER North 3H-21H-N268 - Slot DREAM WEAVER North 3H-21H-N268 SHL
<b>Project:</b>	DJ BASIN	<b>TVD Reference:</b>	23' KB @ 4924.00usft (Original Well Elev)
<b>Reference Site:</b>	S21-T2N-R68W	<b>MD Reference:</b>	23' KB @ 4924.00usft (Original Well Elev)
<b>Site Error:</b>	0.00 usft	<b>North Reference:</b>	True
<b>Reference Well:</b>	DREAM WEAVER North 3H-21H-N268	<b>Survey Calculation Method:</b>	Minimum Curvature
<b>Well Error:</b>	0.00 usft	<b>Output errors are at</b>	2.00 sigma
<b>Reference Wellbore</b>	OH	<b>Database:</b>	USA EDM 5000 Multi Users DB
<b>Reference Design:</b>	PLAN #1	<b>Offset TVD Reference:</b>	Offset Datum

Summary						
Site Name	Reference Measured Depth (usft)	Offset Measured Depth (usft)	Distance Between Centres (usft)	Distance Between Ellipses (usft)	Separation Factor	Warning
<b>Offset Well - Wellbore - Design</b>						
S32-T2N-R68W						
Williams 24-20 - KMG WELL - SURVEYS						Out of range
Williams 24-20X - KMG WELL - SURVEYS						Out of range
Williams 25-20 - KMG WELL - SURVEYS						Out of range
Williams 35-20 - KMG WELL - SURVEYS						Out of range
Williams 36-20 - KMG WELL - SURVEYS						Out of range
Williams 39-20 - KMG WELL - SURVEYS	8,043.59	7,527.28	1,802.34	1,759.19	41.771	CC, ES
Williams 39-20 - KMG WELL - SURVEYS	8,700.00	7,534.00	1,918.14	1,866.97	37.488	SF
Williams 4-29 - KMG WELL - SURVEYS						Out of range
Williams 7-20 - KMG WELL - SURVEYS						Out of range
Williams 8-20 - KMG WELL - SURVEYS						Out of range
Williams 9-20 - KMG WELL - SURVEYS						Out of range
Woolley 41-7 - CPR WELL - GYRO						Out of range
Woolley 42-7 KPK - KPK WELL - SURVEYS						Out of range

# Cathedral Energy Services

## Anticollision Summary Report

<b>Company:</b>	Crestone Peak Resources	<b>Local Co-ordinate Reference:</b>	Well DREAM WEAVER North 3H-21H-N268 - Slot DREAM WEAVER North 3H-21H-N268 SHL
<b>Project:</b>	DJ BASIN	<b>TVD Reference:</b>	23' KB @ 4924.00usft (Original Well Elev)
<b>Reference Site:</b>	S21-T2N-R68W	<b>MD Reference:</b>	23' KB @ 4924.00usft (Original Well Elev)
<b>Site Error:</b>	0.00 usft	<b>North Reference:</b>	True
<b>Reference Well:</b>	DREAM WEAVER North 3H-21H-N268	<b>Survey Calculation Method:</b>	Minimum Curvature
<b>Well Error:</b>	0.00 usft	<b>Output errors are at</b>	2.00 sigma
<b>Reference Wellbore</b>	OH	<b>Database:</b>	USA EDM 5000 Multi Users DB
<b>Reference Design:</b>	PLAN #1	<b>Offset TVD Reference:</b>	Offset Datum

Site Name Offset Well - Wellbore - Design	Reference Measured Depth (usft)	Offset Measured Depth (usft)	Distance Between Centres (usft)	Distance Between Ellipses (usft)	Separation Factor	Warning
S7-T1N-R68W (Woolley-S/B/Morgan Hills)						
BAILEY 8-8-1 (EXISTING) - CPR WELL - SURVEYS						Out of range
BEARDEN 0-6-6 (EXISTING) - CPR WELL - SURVEYS						Out of range
BEARDEN 1 (EXISTING) - CPR WELL - GYRO						Out of range
BEARDEN 13-6 (EXISTING) - CPR WELL - SURVEYS						Out of range
BEARDEN 14-6 (EXISTING) - CPR WELL - SURVEYS						Out of range
BEARDEN 23-6 (EXISTING) - ENCANA WELL - GYRO						Out of range
BEARDEN 24-6 (EXISTING) - CPR WELL - CPR WELL						Out of range
BEARDEN 2-4-6 (EXISTING) - CPR WELL - SURVEYS						Out of range
BEARDEN 2-8-6 (EXISTING) - CPR WELL - SURVEYS						Out of range
BECKY 1 (EXISTING) - FOUNDATION WELL - NO SUR						Out of range
BECKY 2-6 (EXISTING) - EXTRACTION WELL - GYRO						Out of range
BECKY 5-6 (EXISTING) - FOUNDATION WELL - NO SU						Out of range
BECKY 7-6 (EXISTING) - EXTRACTION WELL - GYRO						Out of range
BILLINGS 21-7 (EXISTING) - KPK WELL - SURVEYS						Out of range
BULTHAUP 10-6 (EXISTING) - KMG WELL - SURVEYS						Out of range
BULTHAUP 15-6 (EXISTING) - KMG WELL - GYRO						Out of range
BULTHAUP 17-6 (EXISTING) - KMG WELL - SURVEYS						Out of range
BULTHAUP 21-6 (EXISTING) - KMG WELL - SURVEYS						Out of range
BULTHAUP 23-6 (EXISTING) - KMG WELL - SURVEYS						Out of range
BULTHAUP 27-6 (EXISTING) - KMG WELL - SURVEYS						Out of range
CANYON CREEK 43-13 (EXISTING) - CPR WELL - SUR						Out of range
CANYON CREEK 8-6-13X (EXISTING) - CPR WELL - S						Out of range
CHAMPLIN-86-AMOCO 1 (EXISTING) - AMOCO - SURV						Out of range
COAL CREEK 6-0-19 (EXISTING) - CPR WELL - STK						Out of range
COAL CREEK 6-0-19 (EXISTING) - OH - SURVEYS						Out of range
COMMONS 28-19 (EXISTING) - KMG WELL - SURVEYS						Out of range
ERIE CHAMPLIN 18-9 (EXISTING) - EXISTING - SURVE						Out of range
ERIE CHAMPLIN B UNIT 1 - CPR WELL - GYRO						Out of range
ERIE CHAMPLIN B UNIT 2 - CPR WELL - GYRO						Out of range
I & J 7-6 (EXISTING) - KMG WELL - GYRO						Out of range
Morgan Hills 1A-7H-A168 - HZ - FINAL						Out of range
Morgan Hills 1B-7H-A168 - HZ - FINAL						Out of range
Morgan Hills 1C-7H-A168 - HZ - FINAL						Out of range
Morgan Hills 1D-7H-A168 - HZ - FINAL						Out of range
Morgan Hills 1E-7H-A168 - HZ - FINAL						Out of range
Morgan Hills 1F-7H-A168 - HZ - FINAL						Out of range
Morgan Hills 1G-7H-A168 - HZ - FINAL						Out of range
Morgan Hills 1H-7H-A168 - HZ - FINAL						Out of range
Morgan Hills 1I-7H-A168 - OH - FINAL						Out of range
SOSA 11-18 (EXISTING) - CPR WELL - SURVEYS						Out of range
SOSA 12-18 (EXISTING) - CPR WELL - SURVEYS						Out of range
SOSA 21-18 (EXISTING) - CPR WELL - SURVEYS						Out of range
SOSA 22-18 (EXISTING) - CPR WELL - SURVEYS						Out of range
SOSA A UNIT 1 (EXISTING) - CPR WELL - GYRO						Out of range
TALLGRASS 33-17 (EXISTING) - KMG WELL - SURVEY						Out of range
THOMAS 14-7(EXISTING) - CPR WELL - SURVEYS						Out of range
THOMAS 24-7 (EXISTING) - CPR WELL - SURVEYS						Out of range
THOMAS 2-8-7 (EXISTING) - CPR WELL - SURVEYS						Out of range
THOMAS 33-7 (EXISTING) - CPR WELL - SURVEYS						Out of range
THOMAS 7-12 (EXISTING) - CPR WELL - GYRO						Out of range
Thomas 7-14 (AL) - Existing - NO SURVEYS						Out of range

CC - Min centre to center distance or convergent point, SF - min separation factor, ES - min ellipse separation

# Cathedral Energy Services

## Anticollision Summary Report

<b>Company:</b>	Crestone Peak Resources	<b>Local Co-ordinate Reference:</b>	Well DREAM WEAVER North 3H-21H-N268 - Slot DREAM WEAVER North 3H-21H-N268 SHL
<b>Project:</b>	DJ BASIN	<b>TVD Reference:</b>	23' KB @ 4924.00usft (Original Well Elev)
<b>Reference Site:</b>	S21-T2N-R68W	<b>MD Reference:</b>	23' KB @ 4924.00usft (Original Well Elev)
<b>Site Error:</b>	0.00 usft	<b>North Reference:</b>	True
<b>Reference Well:</b>	DREAM WEAVER North 3H-21H-N268	<b>Survey Calculation Method:</b>	Minimum Curvature
<b>Well Error:</b>	0.00 usft	<b>Output errors are at</b>	2.00 sigma
<b>Reference Wellbore</b>	OH	<b>Database:</b>	USA EDM 5000 Multi Users DB
<b>Reference Design:</b>	PLAN #1	<b>Offset TVD Reference:</b>	Offset Datum

Site Name	Reference Measured Depth (usft)	Offset Measured Depth (usft)	Distance Between Centres (usft)	Distance Between Ellipses (usft)	Separation Factor	Warning
<b>Summary</b>						
<b>Offset Well - Wellbore - Design</b>						
S7-T1N-R68W (Woolley-S/B/Morgan Hills)						
THOMAS E UNIT 1 (EXISTING) - CPR WELL - GYRO						Out of range
THOMAS E UNIT 2 - VESSELS WELL - INC ONLY						Out of range
THOMAS K UNIT 1 (EXISTING) - EXISTING - NO SURV						Out of range
WHEELER G UNIT 1 - CPR - GYRO						Out of range
WIGGETT 13-1 - CPR - GYRO						Out of range
WIGGETT 8-2-13 (EXISTING) - CPR WELL - SURVEYS						Out of range
WOOLLEY 11-7 (EXISTING) - CPR WELL - SURVEYS						Out of range
WOOLLEY 12-7 (EXISTING) - CPR WELL - GYRO						Out of range
WOOLLEY 21-7 (EXISTING) - CPR WELL - GYRO						Out of range
WOOLLEY 22-7 (EXISTING) - CPR WELL - SURVEYS						Out of range
WOOLLEY 2-4-7 (EXISTING) - CPR WELL - SURVEYS						Out of range
WOOLLEY 4-0-7 (EXISTING) - CPR WELL - SURVEYS						Out of range
WOOLLEY 41-7 (EXISTING) - CPR WELL - GYRO						Out of range
WOOLLEY 42-7 (EXISTING) - CPR WELL - GYRO						Out of range
WOOLLEY 42-7 KPK (EXISTING) - KPK WELL - SURVE						Out of range
WOOLLEY A 1-7 (EXISTING) - CPR WELL - GYRO						Out of range
WOOLLEY F UNIT 1 (EXISTING) - CPR WELL - GYRO						Out of range
Woolley-Becky 2A-7H-E168 - Hz - FINAL						Out of range
Woolley-Becky 2B-7H-E168 - Hz - FINAL						Out of range
Woolley-Becky 2C-7H-E168 - Hz - FINAL						Out of range
Woolley-Becky 2D-7H-E168 - Hz - FINAL						Out of range
Woolley-Becky 2E-7H-E168 - Hz - FINAL						Out of range
Woolley-Becky 2F-7H-E168 - Hz - FINAL						Out of range
Woolley-Becky 2G-7H-E168 - Hz - FINAL						Out of range
Woolley-Becky 2H-7H-E168 - Hz - FINAL						Out of range
Woolley-Sosa 2A-7H-E168 - OH - FINAL						Out of range
Woolley-Sosa 2B-7H-E168 - HZ - FINAL						Out of range
Woolley-Sosa 2C-7H-E168 - HZ - FINAL						Out of range
Woolley-Sosa 2D-7H-E168 - HZ - FINAL						Out of range
Woolley-Sosa 2E-7H-E168 - HZ - FINAL						Out of range
Woolley-Sosa 2F-7H-E168 - HZ - FINAL						Out of range
Woolley-Sosa 2G-7H-E168 - HZ - FINAL						Out of range

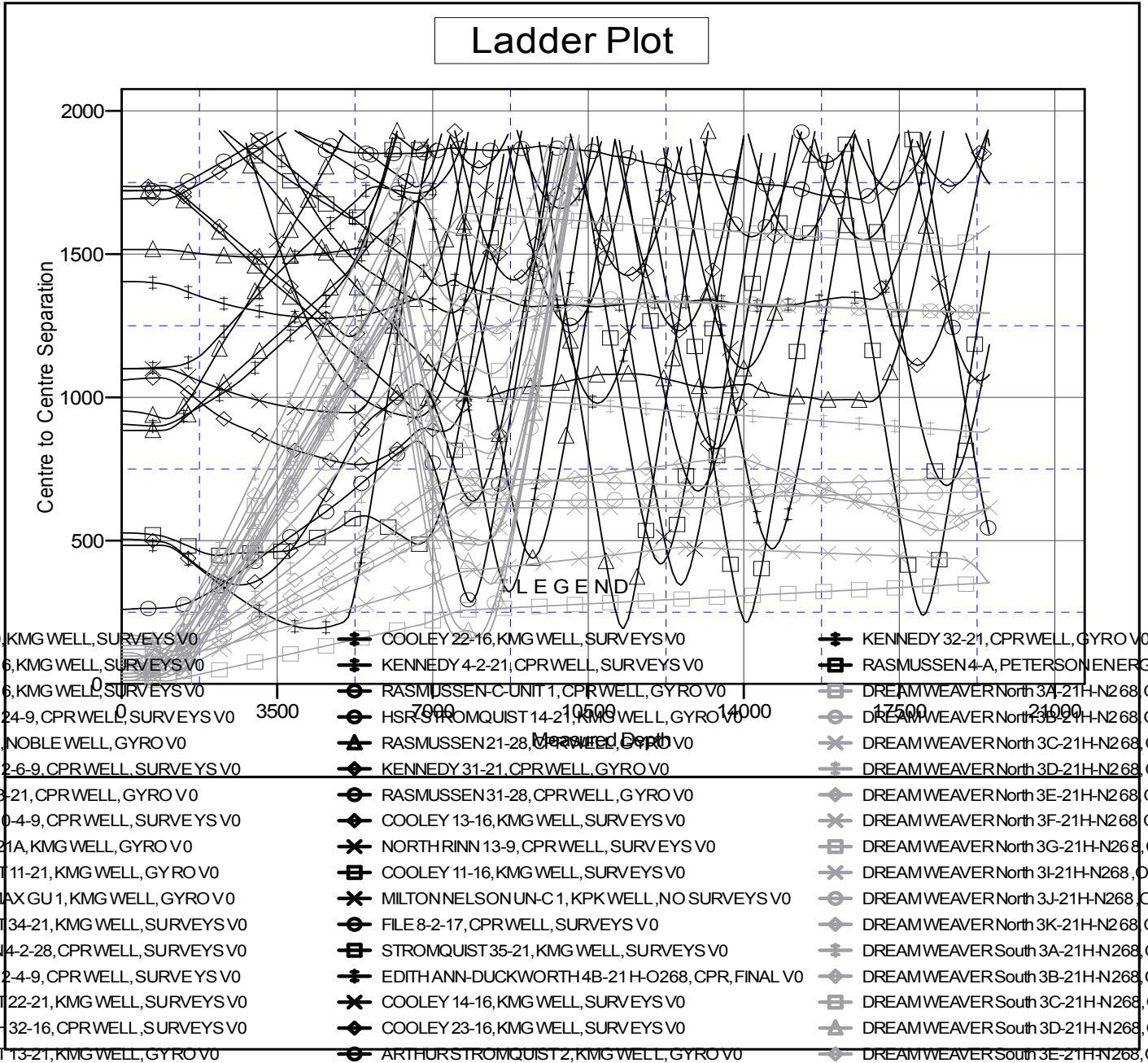
# Cathedral Energy Services

## Anticollision Summary Report

<b>Company:</b>	Crestone Peak Resources	<b>Local Co-ordinate Reference:</b>	Well DREAM WEAVER North 3H-21H-N268 - Slot DREAM WEAVER North 3H-21H-N268 SHL
<b>Project:</b>	DJ BASIN	<b>TVD Reference:</b>	23' KB @ 4924.00usft (Original Well Elev)
<b>Reference Site:</b>	S21-T2N-R68W	<b>MD Reference:</b>	23' KB @ 4924.00usft (Original Well Elev)
<b>Site Error:</b>	0.00 usft	<b>North Reference:</b>	True
<b>Reference Well:</b>	DREAM WEAVER North 3H-21H-N268	<b>Survey Calculation Method:</b>	Minimum Curvature
<b>Well Error:</b>	0.00 usft	<b>Output errors are at</b>	2.00 sigma
<b>Reference Wellbore</b>	OH	<b>Database:</b>	USA EDM 5000 Multi Users DB
<b>Reference Design:</b>	PLAN #1	<b>Offset TVD Reference:</b>	Offset Datum

Reference Depths are relative to 23' KB @ 4924.00usft ( Original Well E  
 Offset Depths are relative to Offset Datum  
 Central Meridian is -105.500000

Coordinates are relative to: DREAM WEAVER North 3H-21H-N268 - Slot DREAM  
 Coordinate System is US State Plane 1983, Colorado Northern Zone  
 Grid Convergence at Surface is: 0.32°



CC - Min centre to center distance or convergent point, SF - min separation factor, ES - min ellipse separation

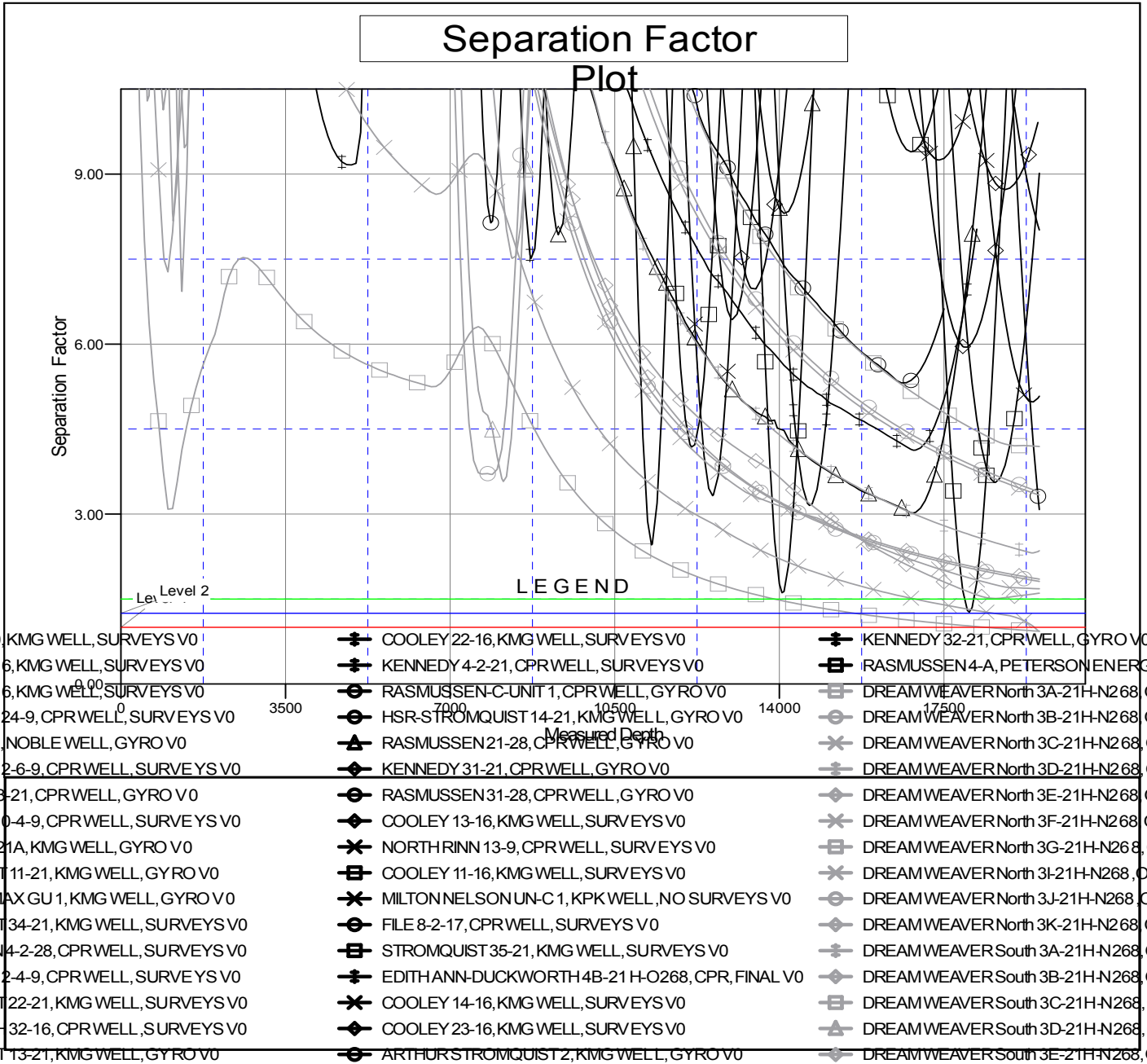
# Cathedral Energy Services

## Anticollision Summary Report

<b>Company:</b>	Crestone Peak Resources	<b>Local Co-ordinate Reference:</b>	Well DREAM WEAVER North 3H-21H-N268 - Slot DREAM WEAVER North 3H-21H-N268 SHL
<b>Project:</b>	DJ BASIN	<b>TVD Reference:</b>	23' KB @ 4924.00usft (Original Well Elev)
<b>Reference Site:</b>	S21-T2N-R68W	<b>MD Reference:</b>	23' KB @ 4924.00usft (Original Well Elev)
<b>Site Error:</b>	0.00 usft	<b>North Reference:</b>	True
<b>Reference Well:</b>	DREAM WEAVER North 3H-21H-N268	<b>Survey Calculation Method:</b>	Minimum Curvature
<b>Well Error:</b>	0.00 usft	<b>Output errors are at</b>	2.00 sigma
<b>Reference Wellbore</b>	OH	<b>Database:</b>	USA EDM 5000 Multi Users DB
<b>Reference Design:</b>	PLAN #1	<b>Offset TVD Reference:</b>	Offset Datum

Reference Depths are relative to 23' KB @ 4924.00usft (Original Well E  
Offset Depths are relative to Offset Datum  
Central Meridian is -105.500000

Coordinates are relative to: DREAM WEAVER North 3H-21H-N268 - Slot DREAM  
Coordinate System is US State Plane 1983, Colorado Northern Zone  
Grid Convergence at Surface is: 0.32°



CC - Min centre to center distance or convergent point, SF - min separation factor, ES - min ellipse separation