

Crestone Peak Resources

DJ BASIN

S21-T2N-R68W

DREAM WEAVER North 3F-21H-N268

OH

PLAN #1

Anticollision Summary Report

23 May, 2018

Cathedral Energy Services

Anticollision Summary Report

Company:	Crestone Peak Resources	Local Co-ordinate Reference:	Well DREAM WEAVER North 3F-21H-N268 - Slot DREAM WEAVER North 3F-21H-N268 SHL
Project:	DJ BASIN	TVD Reference:	23' KB @ 4924.00usft (Original Well Elev)
Reference Site:	S21-T2N-R68W	MD Reference:	23' KB @ 4924.00usft (Original Well Elev)
Site Error:	0.00 usft	North Reference:	True
Reference Well:	DREAM WEAVER North 3F-21H-N268	Survey Calculation Method:	Minimum Curvature
Well Error:	0.00 usft	Output errors are at	2.00 sigma
Reference Wellbore	OH	Database:	USA EDM 5000 Multi Users DB
Reference Design:	PLAN #1	Offset TVD Reference:	Offset Datum

Reference	PLAN #1		
Filter type:	NO GLOBAL FILTER: Using user defined selection & filtering criteria		
Interpolation Method:	MD Interval 100.00usft	Error Model:	ISCWSA
Depth Range:	Unlimited	Scan Method:	Closest Approach 3D
Results Limited by:	Maximum center-center distance of 1,933.21 usft	Error Surface:	Pedal Curve
Warning Levels Evaluated at:	2.00 Sigma	Casing Method:	Not applied

Survey Tool Program	Date	5/23/2018		
From (usft)	To (usft)	Survey (Wellbore)	Tool Name	Description
0.00	700.00	PLAN #1 (OH)	VESSI_GYROFLEX	VESSI Gyroflex Gyro
2,001.00	19,784.78	PLAN #1 (OH)	MWD+HDGM	OWSG MWD + HDGM

Site Name	Reference Measured Depth (usft)	Offset Measured Depth (usft)	Distance Between Centres (usft)	Distance Between Ellipses (usft)	Separation Factor	Warning
Summary						
Offset Well - Wellbore - Design						
S21-T2N-R68W						
DREAM WEAVER North 3A-21H-N268 - OH - PLAN #1	200.00	200.00	60.71	60.22	123.824	CC, ES
DREAM WEAVER North 3A-21H-N268 - OH - PLAN #1	19,785.35	19,711.65	1,038.55	657.22	2.723	SF
DREAM WEAVER North 3B-21H-N268 - OH - PLAN #3	397.26	397.28	48.54	47.36	40.930	CC
DREAM WEAVER North 3B-21H-N268 - OH - PLAN #3	500.00	499.79	48.83	47.29	31.605	ES
DREAM WEAVER North 3B-21H-N268 - OH - PLAN #3	19,785.35	19,884.15	704.50	318.74	1.826	SF
DREAM WEAVER North 3C-21H-N268 - OH - PLAN #2	526.24	526.28	36.32	34.68	22.142	CC
DREAM WEAVER North 3C-21H-N268 - OH - PLAN #2	600.00	599.87	36.56	34.67	19.279	ES
DREAM WEAVER North 3C-21H-N268 - OH - PLAN #2	19,785.35	19,630.38	759.99	384.69	2.025	SF
DREAM WEAVER North 3D-21H-N268 - OH - PLAN #1	675.21	675.32	23.69	21.53	10.963	CC
DREAM WEAVER North 3D-21H-N268 - OH - PLAN #1	19,649.63	19,554.15	339.28	-20.69	0.943	Level 1, ES, SF
DREAM WEAVER North 3E-21H-N268 - OH - PLAN #1	756.69	756.78	11.48	9.04	4.699	CC
DREAM WEAVER North 3E-21H-N268 - OH - PLAN #1	800.00	800.06	11.60	9.01	4.477	ES
DREAM WEAVER North 3E-21H-N268 - OH - PLAN #1	19,785.35	19,570.34	236.27	25.94	1.123	Level 2, SF
DREAM WEAVER North 3G-21H-N268 - OH - PLAN #1	842.56	842.43	11.41	8.66	4.154	CC
DREAM WEAVER North 3G-21H-N268 - OH - PLAN #1	19,200.00	19,039.10	248.79	-75.41	0.767	Level 1, SF
DREAM WEAVER North 3G-21H-N268 - OH - PLAN #1	19,785.35	19,624.01	267.77	-79.37	0.771	Level 1, ES
DREAM WEAVER North 3H-21H-N268 - OH - PLAN #1	917.51	917.23	22.53	19.52	7.494	CC, ES
DREAM WEAVER North 3H-21H-N268 - OH - PLAN #1	19,785.35	19,520.38	614.97	249.00	1.680	SF
DREAM WEAVER North 3I-21H-N268 - OH - PLAN #1	200.00	200.00	36.43	35.94	74.295	CC, ES
DREAM WEAVER North 3I-21H-N268 - OH - PLAN #1	19,785.35	19,633.61	920.20	535.23	2.390	SF
DREAM WEAVER North 3J-21H-N268 - OH - PLAN #1	200.00	200.00	48.57	48.08	99.059	CC, ES
DREAM WEAVER North 3J-21H-N268 - OH - PLAN #1	19,785.35	19,751.47	1,199.61	812.27	3.097	SF
DREAM WEAVER North 3K-21H-N268 - OH - PLAN #1	200.00	200.00	60.71	60.22	123.824	CC, ES
DREAM WEAVER North 3K-21H-N268 - OH - PLAN #1	19,785.35	19,529.97	1,310.10	927.04	3.420	SF
DREAM WEAVER South 3A-21H-N268 - OH - PLAN #1	653.03	659.04	27.58	25.46	13.009	CC, ES
DREAM WEAVER South 3A-21H-N268 - OH - PLAN #1	700.00	704.76	29.95	27.64	12.960	SF
DREAM WEAVER South 3B-21H-N268 - OH - PLAN #2	740.84	748.74	28.66	26.21	11.702	CC, ES, SF
DREAM WEAVER South 3C-21H-N268 - OH - PLAN #1	819.15	828.64	43.43	40.71	15.950	CC, ES
DREAM WEAVER South 3C-21H-N268 - OH - PLAN #1	7,500.00	8,333.16	586.17	539.26	12.497	SF
DREAM WEAVER South 3D-21H-N268 - OH - PLAN #1	928.60	938.44	41.03	37.94	13.258	CC, ES
DREAM WEAVER South 3D-21H-N268 - OH - PLAN #1	7,614.54	8,320.31	256.50	210.15	5.534	SF
DREAM WEAVER South 3E-21H-N268 - OH - PLAN #1	7,431.43	8,331.96	52.48	5.86	1.126	Level 2, CC, ES, SF
DREAM WEAVER South 3F-21H-N268 - OH - PLAN #1	1,081.18	1,109.35	58.07	54.42	15.909	CC, ES
DREAM WEAVER South 3F-21H-N268 - OH - PLAN #1	7,900.00	8,144.73	210.47	165.51	4.681	SF

CC - Min centre to center distance or convergent point, SF - min separation factor, ES - min ellipse separation

Cathedral Energy Services

Anticollision Summary Report

Company:	Crestone Peak Resources	Local Co-ordinate Reference:	Well DREAM WEAVER North 3F-21H-N268 - Slot DREAM WEAVER North 3F-21H-N268 SHL
Project:	DJ BASIN	TVD Reference:	23' KB @ 4924.00usft (Original Well Elev)
Reference Site:	S21-T2N-R68W	MD Reference:	23' KB @ 4924.00usft (Original Well Elev)
Site Error:	0.00 usft	North Reference:	True
Reference Well:	DREAM WEAVER North 3F-21H-N268	Survey Calculation Method:	Minimum Curvature
Well Error:	0.00 usft	Output errors are at	2.00 sigma
Reference Wellbore	OH	Database:	USA EDM 5000 Multi Users DB
Reference Design:	PLAN #1	Offset TVD Reference:	Offset Datum

Summary						
Site Name Offset Well - Wellbore - Design	Reference Measured Depth (usft)	Offset Measured Depth (usft)	Distance Between Centres (usft)	Distance Between Ellipses (usft)	Separation Factor	Warning
S21-T2N-R68W						
DREAM WEAVER South 3G-21H-N268 - OH - PLAN #1	1,268.57	1,275.33	89.58	85.32	21.035	CC, ES
DREAM WEAVER South 3G-21H-N268 - OH - PLAN #1	7,500.00	8,354.22	400.89	354.69	8.677	SF
DREAM WEAVER South 3H-21H-N268 - OH - PLAN #1	1,167.71	1,174.30	114.18	110.28	29.251	CC, ES
DREAM WEAVER South 3H-21H-N268 - OH - PLAN #1	7,300.00	8,409.25	703.61	656.76	15.019	SF
DREAM WEAVER South 3I-21H-N268 - OH - PLAN #2	1,048.70	1,053.94	143.33	139.84	41.115	CC, ES
DREAM WEAVER South 3I-21H-N268 - OH - PLAN #2	7,400.00	8,430.23	1,059.28	1,012.88	22.828	SF
DREAM WEAVER South 3J-21H-N268 - OH - PLAN #2	960.87	965.57	162.53	159.35	51.112	CC, ES
DREAM WEAVER South 3J-21H-N268 - OH - PLAN #2	8,800.00	7,386.25	1,272.83	1,224.86	26.535	SF
DREAM WEAVER South 3K-21H-N268 - OH - PLAN #2	845.64	849.97	180.88	178.09	65.005	CC, ES
DREAM WEAVER South 3K-21H-N268 - OH - PLAN #2	7,300.00	8,319.03	1,472.72	1,426.50	31.863	SF

Cathedral Energy Services

Anticollision Summary Report

Company:	Crestone Peak Resources	Local Co-ordinate Reference:	Well DREAM WEAVER North 3F-21H-N268 - Slot DREAM WEAVER North 3F-21H-N268 SHL
Project:	DJ BASIN	TVD Reference:	23' KB @ 4924.00usft (Original Well Elev)
Reference Site:	S21-T2N-R68W	MD Reference:	23' KB @ 4924.00usft (Original Well Elev)
Site Error:	0.00 usft	North Reference:	True
Reference Well:	DREAM WEAVER North 3F-21H-N268	Survey Calculation Method:	Minimum Curvature
Well Error:	0.00 usft	Output errors are at	2.00 sigma
Reference Wellbore	OH	Database:	USA EDM 5000 Multi Users DB
Reference Design:	PLAN #1	Offset TVD Reference:	Offset Datum

Summary						
Site Name Offset Well - Wellbore - Design	Reference Measured Depth (usft)	Offset Measured Depth (usft)	Distance Between Centres (usft)	Distance Between Ellipses (usft)	Separation Factor	Warning
S21-T2N-R68W (OFFSETS)						
ARTHUR STROMQUIST 2 - KMG WELL - GYRO	10,366.26	7,522.29	682.76	621.17	11.085	CC, ES
ARTHUR STROMQUIST 2 - KMG WELL - GYRO	10,500.00	7,525.96	695.73	632.46	10.997	SF
BLISS 41-21 - KPK WELL - SURVEYS						Out of range
BOULDER CREEK 9-4K8 - SNYDER OIL - NO SURVEY						Out of range
BROWN C UNIT 1 - CPR WELL - GYRO						Out of range
CANINO 1 - HUGHES C W-SOTEXCO 1 - NO SURVEY						Out of range
CHAMPLIN 41-4/1-68/ 1 - KMG WELL - NO SURVEYS						Out of range
CHAMPLIN 86 AMOCO B 2 - KPK WELL - NO SURVEY						Out of range
CHAMPLIN 86 AMOCO UT/Q 1 - KMG WELL - GYRO						Out of range
CHAMPLIN 86 AMOCO-B 1 - KPK WELL - NO SURVEY						Out of range
CHAMPLIN 86 AMOCO-B 3 - KPK WELL - NO SURVEY						Out of range
CHAMPLIN 86 AMOCO-B 4 - KPK WELL - NO SURVEY						Out of range
CHAMPLIN 86 AMOCO-B 5 - KPK WELL - NO SURVEY						Out of range
CHAMPLIN 86 AMOCO-B 6 - KPK WELL - NO SURVEY						Out of range
CHAMPLIN 86 AMOCO-F 5 - KPK WELL - NO SURVEY						Out of range
CHAMPLIN 86 AMOCO-O 9 - KMG WELL - GYRO						Out of range
CHAMPLIN32-4/1-68/ 2 - KMG WELL - NO SURVEYS						Out of range
CHMPLN 86 AMOCO-F 1 - KPK WELL - NO SURVEYS						Out of range
COLCLASURE 42-21 - KPK WELL - NO SURVEYS						Out of range
COOLEY 11-16 - KMG WELL - SURVEYS	14,295.52	7,747.35	817.16	684.65	6.166	CC
COOLEY 11-16 - KMG WELL - SURVEYS	14,300.00	7,747.43	817.18	684.53	6.161	ES
COOLEY 11-16 - KMG WELL - SURVEYS	14,400.00	7,749.13	823.81	689.30	6.124	SF
COOLEY 12-16 - KMG WELL - SURVEYS	14,300.86	7,693.73	500.98	368.86	3.792	CC, ES, SF
COOLEY 13-16 - KMG WELL - SURVEYS	12,811.12	7,599.49	661.89	558.87	6.425	CC, ES, SF
COOLEY 14-16 - KMG WELL - SURVEYS	12,835.46	7,665.49	916.79	812.86	8.822	CC, ES, SF
COOLEY 22-16 - KMG WELL - SURVEYS	14,900.11	7,762.41	151.64	1.86	1.012	Level 2, CC, ES, SF
COOLEY 23-16 - KMG WELL - SURVEYS	13,600.00	7,725.80	1,393.87	1,277.61	11.990	CC, ES
COOLEY 23-16 - KMG WELL - SURVEYS	13,800.00	7,725.36	1,411.25	1,291.79	11.814	SF
COOLEY 35-16 - KMG WELL - SURVEYS	12,397.71	7,615.97	153.35	52.88	1.526	CC, ES, SF
COPPER 31-15 - KMG WELL - SURVEYS						Out of range
CPC 31-4 (1-68) 3 - ANADARKO WELL - NO SURVEYS						Out of range
CPC 42-4 (1-68) 4 - ANADARKO WELL - NO SURVEYS						Out of range
DOMENICO 1 - NOBLE WELL - GYRO						Out of range
DUCKWORTH 31-16 - CPR WELL - GYRO						Out of range
DUCKWORTH 32-16 - CPR WELL - SURVEYS						Out of range
DUCKWORTH 33-16 - CPR WELL - SURVEYS						Out of range
DUCKWORTH 41-16 - CPR WELL - SURVEYS						Out of range
DUCKWORTH 43-16 - CPR WELL - GYRO						Out of range
DUCKWORTH 44-16 - CPR WELL - SURVEYS						Out of range
DUCKWORTH 6-0-16 - CPR WELL - SURVEYS						Out of range
DUCKWORTH B UNIT 1 - CPR WELL - GYRO						Out of range
DUCKWORTH B UNIT 2 - CPR WELL - GYRO						Out of range
EAST RINN 0-4-15 - CPR WELL - SURVEYS						Out of range
EAST RINN 13-15 - CPR WELL - SURVEYS						Out of range
EDITH ANN 1 - CPR WELL - GYRO						Out of range
EDITH ANN 33-21 - CPR WELL - GYRO	0.00	0.00	1,691.99			
EDITH ANN 33-21 - CPR WELL - GYRO	710.84	710.82	1,692.33	1,690.05	742.384	ES
EDITH ANN 33-21 - CPR WELL - GYRO	2,500.00	2,488.10	1,920.60	1,912.41	234.347	SF
EDITH ANN 34-21 - CPR WELL - GYRO	926.29	952.86	1,417.44	1,414.34	458.662	CC
EDITH ANN 34-21 - CPR WELL - GYRO	1,000.00	1,028.56	1,417.68	1,414.33	422.721	ES
EDITH ANN 34-21 - CPR WELL - GYRO	8,100.00	7,527.30	1,909.92	1,873.76	52.814	SF

CC - Min centre to center distance or convergent point, SF - min separation factor, ES - min ellipse separation

Cathedral Energy Services

Anticollision Summary Report

Company:	Crestone Peak Resources	Local Co-ordinate Reference:	Well DREAM WEAVER North 3F-21H-N268 - Slot DREAM WEAVER North 3F-21H-N268 SHL
Project:	DJ BASIN	TVD Reference:	23' KB @ 4924.00usft (Original Well Elev)
Reference Site:	S21-T2N-R68W	MD Reference:	23' KB @ 4924.00usft (Original Well Elev)
Site Error:	0.00 usft	North Reference:	True
Reference Well:	DREAM WEAVER North 3F-21H-N268	Survey Calculation Method:	Minimum Curvature
Well Error:	0.00 usft	Output errors are at	2.00 sigma
Reference Wellbore	OH	Database:	USA EDM 5000 Multi Users DB
Reference Design:	PLAN #1	Offset TVD Reference:	Offset Datum

Summary						
Site Name Offset Well - Wellbore - Design	Reference Measured Depth (usft)	Offset Measured Depth (usft)	Distance Between Centres (usft)	Distance Between Ellipses (usft)	Separation Factor	Warning
S21-T2N-R68W (OFFSETS)						
EDITH ANN 4-21 - CPR WELL - SURVEYS						Out of range
EDITH ANN 44-21 - CPR WELL - GYRO						Out of range
EDITH ANN 6-8-21 - CPR WELL - SURVEYS						Out of range
EDITH ANN 8-8-21 - CPR WELL - SURVEYS						Out of range
EDITH ANN-DUCKWORTH 4A-21H-O268 - CPR - FINAL	8,342.92	8,362.00	1,570.38	1,522.37	32.710	CC
EDITH ANN-DUCKWORTH 4A-21H-O268 - CPR - FINAL	17,143.40	17,130.00	1,589.45	1,267.30	4.934	ES, SF
EDITH ANN-DUCKWORTH 4B-21H-O268 - CPR - FINAL	9,511.07	9,630.43	1,872.16	1,792.60	23.532	CC
EDITH ANN-DUCKWORTH 4B-21H-O268 - CPR - FINAL	17,163.72	17,237.97	1,920.28	1,593.90	5.884	ES, SF
EDITH ANN-DUCKWORTH 4C-21H-O268 - CPR - FINA						Out of range
EDITH ANN-DUCKWORTH 4D-21H-O268 - CPR - FINA						Out of range
EDITH ANN-DUCKWORTH 4E-21H-O268 - CPR - FINAL						Out of range
EDITH ANN-DUCKWORTH 4F-21H-O268 - CPR - FINAL						Out of range
EDITH ANN-DUCKWORTH 4G-21H-O268 - CPR - FINA						Out of range
EDITH ANN-DUCKWORTH 4H-21H-O268 - CPR - FINA						Out of range
ERIE CORP 42-4 - KMG WELL - NO SURVEYS						Out of range
EVERIST 12-10 - KMG WELL - SURVEYS						Out of range
EVERIST 12-10X - KMG WELL - NO SURVEYS						Out of range
EVERIST 13-10 - KMG WELL - SURVEYS						Out of range
EVERIST 33-10 - KMG WELL - SURVEYS						Out of range
FAIRVIEW 1 - EXTRACTION WELL - NO SURVEYS						Out of range
FAIRVIEW 3 - EXTRACTION O&G LLC - SURVEYS						Out of range
FAIRVIEW 4 - EXTRACTION O&G LLC - SURVEYS						Out of range
FAIRVIEW 5 - EXTRACTION O&G LLC - SURVEYS						Out of range
FILE 1-17 - CPR WELL - SURVEYS						Out of range
FILE 31-17 - CPR WELL - SURVEYS						Out of range
FILE 32-17 - CPR WELL - SURVEYS						Out of range
FILE 41-17 - CPR WELL - SURVEYS	16,876.83	7,669.65	1,689.72	1,520.74	10.000	CC
FILE 41-17 - CPR WELL - SURVEYS	16,900.00	7,670.32	1,689.88	1,520.57	9.981	ES
FILE 41-17 - CPR WELL - SURVEYS	17,000.00	7,673.27	1,694.20	1,523.77	9.941	SF
FILE 42-17 - CPR WELL - NO SURVEYS						Out of range
FILE 4-2-17 - CPR WELL - SURVEYS						Out of range
FILE 42-17X - CPR WELL - SURVEYS	15,431.75	7,761.33	1,667.64	1,517.13	11.080	CC
FILE 42-17X - CPR WELL - SURVEYS	15,500.00	7,760.22	1,669.04	1,516.72	10.958	ES
FILE 42-17X - CPR WELL - SURVEYS	15,700.00	7,756.93	1,689.07	1,532.75	10.805	SF
FILE 6-0-17 - CPR WELL - SURVEYS						Out of range
FILE 8-2-17 - CPR WELL - SURVEYS	16,085.12	7,823.30	1,203.40	1,047.07	7.698	CC
FILE 8-2-17 - CPR WELL - SURVEYS	16,100.00	7,823.25	1,203.50	1,046.78	7.680	ES
FILE 8-2-17 - CPR WELL - SURVEYS	16,200.00	7,822.95	1,208.87	1,050.03	7.610	SF
FREDERICKS 13-27 - KMG WELL - NO SURVEYS						Out of range
FREDERICKS 13-27X - KMG WELL - SURVEYS						Out of range
GARVER U 34-5JI - KMG WELL - NO SURVEYS						Out of range
HINGLEY 1 - KPK WELL - NO SURVEYS						Out of range
HINGLEY 2 - KPK WELL - NO SUREYS						Out of range
HSR-STROMQUIST 14-21 - KMG WELL - GYRO	1,513.00	1,490.92	225.39	220.29	44.172	CC, ES
HSR-STROMQUIST 14-21 - KMG WELL - GYRO	8,128.55	7,532.65	284.26	247.93	7.824	SF
JACK A MLEYNEK 2 - KPK WELL - NO SURVEYS						Out of range
JACK MLEYNEK 1 - KPK WELL - NO SURVEYS						Out of range
JACK MLEYNEK 3 - KPK WELL - NO SURVEYS						Out of range
JACK MLEYNEK 4 - KPK WELL - NO SURVEYS						Out of range
JACK MLEYNEK 5 - KPK WELL - NO SURVEYS						Out of range
JILLSON 0-6-22 - CPR WELL - SURVEYS						Out of range

CC - Min centre to center distance or convergent point, SF - min separation factor, ES - min ellipse separation

Cathedral Energy Services

Anticollision Summary Report

Company:	Crestone Peak Resources	Local Co-ordinate Reference:	Well DREAM WEAVER North 3F-21H-N268 - Slot DREAM WEAVER North 3F-21H-N268 SHL
Project:	DJ BASIN	TVD Reference:	23' KB @ 4924.00usft (Original Well Elev)
Reference Site:	S21-T2N-R68W	MD Reference:	23' KB @ 4924.00usft (Original Well Elev)
Site Error:	0.00 usft	North Reference:	True
Reference Well:	DREAM WEAVER North 3F-21H-N268	Survey Calculation Method:	Minimum Curvature
Well Error:	0.00 usft	Output errors are at	2.00 sigma
Reference Wellbore	OH	Database:	USA EDM 5000 Multi Users DB
Reference Design:	PLAN #1	Offset TVD Reference:	Offset Datum

Summary						
Site Name Offset Well - Wellbore - Design	Reference Measured Depth (usft)	Offset Measured Depth (usft)	Distance Between Centres (usft)	Distance Between Ellipses (usft)	Separation Factor	Warning
S21-T2N-R68W (OFFSETS)						
JILLSON 1 - KPK WELL - NO SURVEYS						Out of range
JILLSON 11-22 - CPR WELL - GYRO						Out of range
JILLSON 12-22 - CPR WELL - GYRO						Out of range
JILLSON 14-22 - CPR WELL - GYRO						Out of range
JILLSON 3 - KPK WELL - NO SURVEYS						Out of range
JILLSON 5 - KPK WELL - NO SURVEYS						Out of range
JILLSON A 1 - KPK WELL - NO SURVEYS	700.00	675.99	1,534.25	1,531.95	668.200	CC, ES
JILLSON A 1 - KPK WELL - NO SURVEYS	5,500.00	5,416.85	1,912.18	1,888.10	79.434	SF
JILLSON A 2 - KPK WELL - NO SURVEYS	700.00	675.99	1,722.37	1,720.07	748.808	CC, ES
JILLSON A 2 - KPK WELL - NO SURVEYS	2,300.00	2,259.00	1,926.78	1,919.16	252.919	SF
JILLSON A 3 - KPK WELL - NO SURVEYS						Out of range
JILLSON A 4 - KPK WELL - NO SURVEYS						Out of range
JILLSON-EAST RINN 3A-22H-M268 - CPR WELL - SUR						Out of range
JILLSON-EAST RINN 3B-22H-M268 - CPR WELL - SUR						Out of range
JILLSON-EAST RINN 3C-22H-M268 - CPR WELL - SUR						Out of range
KENNEDY 1 - MACEY & MERSHON WELL - NO SURVE						Out of range
KENNEDY 31-21 - CPR WELL - GYRO						Out of range
KENNEDY 32-21 - CPR WELL - GYRO						Out of range
KENNEDY 41-21 - CPR WELL - GYRO						Out of range
KENNEDY 4-2-21 - CPR WELL - SURVEYS	10,968.03	7,596.09	1,548.83	1,472.07	20.178	CC
KENNEDY 4-2-21 - CPR WELL - SURVEYS	11,000.00	7,596.19	1,549.16	1,471.93	20.057	ES
KENNEDY 4-2-21 - CPR WELL - SURVEYS	11,200.00	7,596.79	1,566.11	1,486.42	19.654	SF
KENNEDY 6-0-21 - CPR WELL - SURVEYS						Out of range
KENNEDY 6-4-21 - CPR WELL - SURVEYS						Out of range
KENNEDY 8-0-21 - CPR WELL - SURVEYS						Out of range
KENNEDY GAS UNIT 1 - CPR WELL - GYRO						Out of range
LONGMONT 8-10K - TOP OPERATING WELL - NO SUR						Out of range
LONGMONT FARMS 1 - KPK WELL - NO SURVEYS						Out of range
LONGMONT FARMS 3 - KPK WELL - NO SURVEYS						Out of range
MAX SERAFINI 1 - KPK WELL - NO SURVEYS						Out of range
MAX SERAFINI C 1 - KPK WELL - NO SURVEYS						Out of range
MILES 1 - KPK WELL - NO SURVEYS						Out of range
MILES 33-3M - KMG WELL - GYRO						Out of range
MILES 4 - KPK WELL - NO SURVEYS						Out of range
MILES 5 - KPK WELL - NO SURVEYS						Out of range
MILES JOSEPHINE 1 - KPK WELL - NO SURVEYS						Out of range
MILES JOSEPHINE 2 - KPK WELL - NO SURVEYS						Out of range
MILES JOSEPHINE B 1 - KPK WELL - NO SURVEYS						Out of range
MILLER 12-27 - CPR WELL - GYRO						Out of range
MILTON NELSON 1 - KPK WELL - NO SURVEYS	700.00	681.00	866.22	863.68	340.940	CC, ES
MILTON NELSON 1 - KPK WELL - NO SURVEYS	5,200.00	4,960.00	1,525.75	1,502.22	64.848	SF
MILTON NELSON UN-C 1 - KPK WELL - NO SURVEYS	5,341.02	5,227.00	570.76	544.49	21.725	CC, ES
MILTON NELSON UN-C 1 - KPK WELL - NO SURVEYS	5,400.00	5,227.00	573.80	547.11	21.499	SF
MILTON NELSON UNIT 1 - KPK WELL - NO SURVEYS	2,735.63	2,703.10	415.38	404.81	39.290	CC
MILTON NELSON UNIT 1 - KPK WELL - NO SURVEYS	2,800.00	2,760.42	415.51	404.63	38.174	ES
MILTON NELSON UNIT 1 - KPK WELL - NO SURVEYS	5,100.00	4,977.00	567.16	542.96	23.439	SF
MLEYNEK 28-10M - KMG WELL - GYRO						Out of range
MLEYNEK U 28-10JI - KMG WELL - GYRO						Out of range
MLEYNEK U 28-15JI - KMG WELL - GYRO						Out of range
MORGAN-A 4 - KPK WELL - NO SURVEYS						Out of range
NELSON 42-33 /2-68/ 2 - ANADARKO WELL - NO SURV						Out of range

CC - Min centre to center distance or convergent point, SF - min separation factor, ES - min ellipse separation

Cathedral Energy Services

Anticollision Summary Report

Company:	Crestone Peak Resources	Local Co-ordinate Reference:	Well DREAM WEAVER North 3F-21H-N268 - Slot DREAM WEAVER North 3F-21H-N268 SHL
Project:	DJ BASIN	TVD Reference:	23' KB @ 4924.00usft (Original Well Elev)
Reference Site:	S21-T2N-R68W	MD Reference:	23' KB @ 4924.00usft (Original Well Elev)
Site Error:	0.00 usft	North Reference:	True
Reference Well:	DREAM WEAVER North 3F-21H-N268	Survey Calculation Method:	Minimum Curvature
Well Error:	0.00 usft	Output errors are at	2.00 sigma
Reference Wellbore	OH	Database:	USA EDM 5000 Multi Users DB
Reference Design:	PLAN #1	Offset TVD Reference:	Offset Datum

Summary						
Site Name Offset Well - Wellbore - Design	Reference Measured Depth (usft)	Offset Measured Depth (usft)	Distance Between Centres (usft)	Distance Between Ellipses (usft)	Separation Factor	Warning
S21-T2N-R68W (OFFSETS)						
NELSON DUANE E 41-33 (2-68) 1 - CHAMPLIN PETRO						Out of range
NELSON DUANE E 41-33 (2-68) 1-X - KMG WELL - NO						Out of range
NELSON E UNIT 2 - CPR WELL - GYRO						Out of range
NELSON MILTON H 'D' 1 - KMG WELL - GYRO						Out of range
NELSON MILTON H 'M' 1 - KMG WELL - GYRO						Out of range
NELSON MILTON-F 1 - KPK WELL - NO SURVEYS						Out of range
NORTH RINN 0-4-9 - CPR WELL - SURVEYS	19,785.35	7,865.00	1,190.81	981.26	5.683	CC, ES, SF
NORTH RINN 0-6-9 - CPR WELL - SURVEYS	18,887.23	7,622.61	1,197.37	1,000.53	6.083	CC
NORTH RINN 0-6-9 - CPR WELL - SURVEYS	18,900.00	7,622.53	1,197.44	1,000.30	6.074	ES
NORTH RINN 0-6-9 - CPR WELL - SURVEYS	19,000.00	7,621.96	1,202.62	1,003.74	6.047	SF
NORTH RINN 0-8-9 - CPR WELL - SURVEYS	17,573.71	7,766.91	1,151.12	965.15	6.190	CC, ES
NORTH RINN 0-8-9 - CPR WELL - SURVEYS	17,600.00	7,766.72	1,151.42	965.25	6.185	SF
NORTH RINN 13-9 - CPR WELL - SURVEYS	19,603.94	7,607.24	497.05	284.58	2.339	CC, ES, SF
NORTH RINN 14-9 - CPR WELL - SURVEYS	18,171.06	7,563.29	553.70	367.10	2.967	CC, ES
NORTH RINN 14-9 - CPR WELL - SURVEYS	18,200.00	7,563.45	554.46	367.42	2.964	SF
NORTH RINN 24-9 - CPR WELL - SURVEYS	18,323.67	7,609.69	794.92	606.37	4.216	CC, ES, SF
NORTH RINN 2-4-9 - CPR WELL - SURVEYS	19,785.35	7,680.45	408.76	293.14	3.535	CC, ES, SF
NORTH RINN 2-6-9 - CPR WELL - SURVEYS	18,832.46	7,500.30	149.07	-45.06	0.768	Level 1, CC, ES, SF
OSKARSON 1 - HRM RES II LLC - NO SURVEYS						Out of range
OSKARSON 2 - ENERVEST OP - NO SURVEYS						Out of range
OSKARSON 24-33 - CPR WELL - GYRO						Out of range
OSKARSON 2-8-33 - CPR WELL - SURVEYS						Out of range
OSKARSON 3 - HRM RES II LLC - NO SURVEYS						Out of range
OSKARSON-E 1 - CPR WELL - GYRO						Out of range
OSKARSON-E 2 - CPR WELL - NO SURVEYS						Out of range
RASMUSSEN 3 - PETERSON ENERGY - GYRO						Out of range
RASMUSSEN 1 - PETERSON - GYRO	5,106.07	4,967.00	1,334.14	1,312.24	60.912	CC, ES
RASMUSSEN 1 - PETERSON - GYRO	5,300.00	4,967.00	1,348.16	1,325.71	60.046	SF
RASMUSSEN 11-28 - CPR WELL - SURVEYS	6,925.55	7,157.63	1,019.65	968.31	19.859	CC, ES
RASMUSSEN 11-28 - CPR WELL - SURVEYS	7,000.00	7,233.81	1,022.95	971.32	19.811	SF
RASMUSSEN 12-28 - CPR WELL - SURVEYS						Out of range
RASMUSSEN 2 - PETERSON ENERGY - NO SURVEYS						Out of range
RASMUSSEN 21-28 - CPR WELL - GYRO	6,900.00	6,836.81	1,085.70	1,053.02	33.230	CC, ES
RASMUSSEN 21-28 - CPR WELL - GYRO	7,000.00	6,937.95	1,093.95	1,060.78	32.981	SF
RASMUSSEN 22-28 - CPR WELL - GYRO						Out of range
RASMUSSEN 2-4-28 - CPR WELL - SURVEYS						Out of range
RASMUSSEN 31-28 - CPR WELL - GYRO						Out of range
RASMUSSEN 32-28 32-28 - CPR WELL - GYRO						Out of range
RASMUSSEN 4-0-28 - CPR WELL - SURVEYS	5,321.39	5,740.73	1,340.17	1,288.57	25.971	CC
RASMUSSEN 4-0-28 - CPR WELL - SURVEYS	5,500.00	5,918.34	1,340.93	1,287.93	25.299	ES
RASMUSSEN 4-0-28 - CPR WELL - SURVEYS	6,900.00	7,277.63	1,414.49	1,354.07	23.409	SF
RASMUSSEN 41-28 - CPR WELL - GYRO						Out of range
RASMUSSEN 42-28 - CPR WELL - SURVEYS						Out of range
RASMUSSEN 4-2-28 - CPR WELL - SURVEYS						Out of range
RASMUSSEN 4-4-28 - CPR WELL - SURVEYS						Out of range
RASMUSSEN 44-29 - KPK WELL - NO SURVEYS						Out of range
RASMUSSEN 4-A - PETERSON ENERGY - GYRO	5,254.10	4,960.00	1,423.87	1,402.73	67.364	CC, ES
RASMUSSEN 4-A - PETERSON ENERGY - GYRO	5,500.00	4,960.00	1,444.94	1,423.17	66.372	SF
RASMUSSEN C" 2" - CPR WELL - GYRO						Out of range
RASMUSSEN-C-UNIT 1 - CPR WELL - GYRO	6,906.54	6,796.10	1,529.14	1,498.56	49.999	CC, ES
RASMUSSEN-C-UNIT 1 - CPR WELL - GYRO	7,100.00	6,988.02	1,554.00	1,522.47	49.284	SF

CC - Min centre to center distance or convergent point, SF - min separation factor, ES - min ellipse separation

Cathedral Energy Services

Anticollision Summary Report

Company:	Crestone Peak Resources	Local Co-ordinate Reference:	Well DREAM WEAVER North 3F-21H-N268 - Slot DREAM WEAVER North 3F-21H-N268 SHL
Project:	DJ BASIN	TVD Reference:	23' KB @ 4924.00usft (Original Well Elev)
Reference Site:	S21-T2N-R68W	MD Reference:	23' KB @ 4924.00usft (Original Well Elev)
Site Error:	0.00 usft	North Reference:	True
Reference Well:	DREAM WEAVER North 3F-21H-N268	Survey Calculation Method:	Minimum Curvature
Well Error:	0.00 usft	Output errors are at	2.00 sigma
Reference Wellbore	OH	Database:	USA EDM 5000 Multi Users DB
Reference Design:	PLAN #1	Offset TVD Reference:	Offset Datum

Summary						
Site Name	Reference Measured Depth (usft)	Offset Measured Depth (usft)	Distance Between Centres (usft)	Distance Between Ellipses (usft)	Separation Factor	Warning
Offset Well - Wellbore - Design						
S21-T2N-R68W (OFFSETS)						
RODGERS 1 - KPK WELL - NO SURVEYS						Out of range
SAUNDERS TRUST 8-2K8 - EXTRACTION WELL - NO						Out of range
SCHLAGEL 2 - EXTRACTION WELL - NO SURVEYS						Out of range
SERAFINI E MAX GU 1 - KMG WELL - GYRO	13,227.45	7,512.57	106.47	2.06	1.020	Level 2, CC, ES, SF
SERAFINI-B 2 - KPK WELL - NO SURVEYS						Out of range
SHAW 1 - KPK WELL - NO SURVEYS						Out of range
SHAW 15-20 - KPK - SURVEYS						Out of range
SHAW 16-20 - KPK - SURVEYS						Out of range
STROMQUIST 1 - KPK WELL - NO SURVEYS						Out of range
STROMQUIST 11-21 - KMG WELL - GYRO	707.57	694.79	883.29	881.01	388.497	CC
STROMQUIST 11-21 - KMG WELL - GYRO	9,000.00	7,526.52	895.16	851.52	20.512	ES
STROMQUIST 11-21 - KMG WELL - GYRO	9,100.00	7,527.33	902.50	858.07	20.311	SF
STROMQUIST 13-21 - KMG WELL - GYRO	7,533.13	7,400.75	325.64	291.64	9.577	CC, ES, SF
STROMQUIST 22-21 - KMG WELL - SURVEYS	9,524.12	7,622.06	135.59	79.08	2.400	CC, ES, SF
STROMQUIST 23-21 - KMG WELL - SURVEYS	1,967.61	1,945.70	465.50	457.73	59.970	CC
STROMQUIST 23-21 - KMG WELL - SURVEYS	2,000.00	1,977.10	465.56	457.67	58.993	ES
STROMQUIST 23-21 - KMG WELL - SURVEYS	8,400.00	7,572.05	1,229.41	1,189.32	30.666	SF
STROMQUIST 34-21 - KMG WELL - SURVEYS	1,496.17	1,325.84	1,067.89	1,062.47	197.110	CC
STROMQUIST 34-21 - KMG WELL - SURVEYS	1,500.00	1,328.95	1,067.89	1,062.46	196.617	ES
STROMQUIST 34-21 - KMG WELL - SURVEYS	7,200.00	7,200.25	1,200.85	1,163.81	32.425	SF
STROMQUIST 35-21 - KMG WELL - SURVEYS	6,900.00	6,907.01	287.27	246.29	7.010	CC, ES, SF
TRAVELERS 28-11M - KMG WELL - GYRO						Out of range
TRAVELERS U 28-13DI - KMG WELL - GYRO						Out of range
UPRC 33-1M - KMG WELL - GYRO						Out of range
UPRR 43 PAN AM-B 7 - KPK WELL - NO SURVEYS						Out of range
WESTERN 3-21A - KMG WELL - GYRO	11,543.86	7,515.17	762.49	683.66	9.673	CC, ES
WESTERN 3-21A - KMG WELL - GYRO	11,600.00	7,515.36	764.55	685.30	9.647	SF
WILDFLOWER 12-27 - KMG WELL - SURVEYS						Out of range
WILDFLOWER 33-27 - KMG WELL - SURVEYS						Out of range
WOOLEY UNIT 1 - KPK WELL - NO SURVEYS						Out of range

CC - Min centre to center distance or convergent point, SF - min separation factor, ES - min ellipse separation

Cathedral Energy Services

Anticollision Summary Report

Company:	Crestone Peak Resources	Local Co-ordinate Reference:	Well DREAM WEAVER North 3F-21H-N268 - Slot DREAM WEAVER North 3F-21H-N268 SHL
Project:	DJ BASIN	TVD Reference:	23' KB @ 4924.00usft (Original Well Elev)
Reference Site:	S21-T2N-R68W	MD Reference:	23' KB @ 4924.00usft (Original Well Elev)
Site Error:	0.00 usft	North Reference:	True
Reference Well:	DREAM WEAVER North 3F-21H-N268	Survey Calculation Method:	Minimum Curvature
Well Error:	0.00 usft	Output errors are at	2.00 sigma
Reference Wellbore	OH	Database:	USA EDM 5000 Multi Users DB
Reference Design:	PLAN #1	Offset TVD Reference:	Offset Datum

Site Name	Reference Measured Depth (usft)	Offset Measured Depth (usft)	Distance Between Centres (usft)	Distance Between Ellipses (usft)	Separation Factor	Warning
Summary						
Offset Well - Wellbore - Design						
S32-T2N-R68W						
Anderson 22-32 - KPK WELL - NO SURVEYS						Out of range
Anderson 32-32 - CPR WELL - SURVEYS						Out of range
Anderson 41-32 - CPR - GYRO						Out of range
Anderson 4-2-32 - CPR WELL - SURVEYS						Out of range
Anderson 6-4-32 - CPR WELL - SURVEYS						Out of range
Anderson Trust 1 - KPK - NO SURVEYS						Out of range
Anderson Trust 1 A - CPR WELL - GYRO						Out of range
Anderson Trust 2-A - CPR WELL - NO SURVEYS						Out of range
Anderson Trust 32-2 - CPR WELL - GYRO						Out of range
Anderson Trust 32-8 - CPR WELL - GYRO						Out of range
Anderson Trust C 1 - CPR WELL - SURVEYS						Out of range
Anderson Trust C Unit 2 - CPR WELL - GYRO						Out of range
Brown 22-5 - CPR WELL - GYRO						Out of range
Brown 31-5 - CPR WELL - SURVEYS						Out of range
Brown 41-5 - CPR WELL - SURVEYS						Out of range
Brown 5-3 - CPR WELL - GYRO						Out of range
Brown 5-5 - CPR WELL - GYRO						Out of range
Brown C Unit 1 - CPR WELL - GYRO						Out of range
Brown C Unit 2 - CPR WELL - GYRO						Out of range
Bryant 10-30 - KMG WELL - SURVEYS						Out of range
Bryant 16-30 - KMG WELL - SURVEYS						Out of range
Bryant 20-30 - KMG WELL - SURVEYS						Out of range
Bryant 23-30 - KMG WELL - SURVEYS						Out of range
Bryant 24-30 - KMG WELL - SURVEYS						Out of range
Bryant 33-29 - KMG WELL - SURVEYS						Out of range
Bryant 36-30 - KMG WELL - SURVEYS						Out of range
Bryant 8-30 - KMG WELL - SURVEYS						Out of range
Bryant Federal 37-30 - KMG WELL - SURVEYS						Out of range
Bulthaup 1-6 - KMG WELL - GYRO						Out of range
Bulthaup 16-6 - KMG WELL - SURVEYS						Out of range
Bulthaup 17-6 - KMG WELL - SURVEYS						Out of range
Bulthaup 24-6 - KMG WELL - SURVEYS						Out of range
Bulthaup 27-6 - KMG WELL - SURVEYS						Out of range
Bulthaup 39-6 - KMG WELL - SURVEYS						Out of range
Bulthaup 40-6 - KMG WELL - SURVEYS						Out of range
Bulthaup 8-6 - KMG WELL - GYRO						Out of range
Bulthaup 9-6 - KMG WELL - SURVEYS						Out of range
Canino 1-X - HUGHES CW - NO SURVEYS						Out of range
Champlin 86 Amoco F 6 - KPK - NO SURVEYS						Out of range
Champlin 86 N 1 - KMG WELL - GYRO						Out of range
Champlin Amoco 86 F 7 - KPK WELL - SURVEYS						Out of range
Cinque 1 - FOUNDATION WELL - NO SURVEYS						Out of range
Cinque 2 - FOUNDATION WELL - NO SURVEYS						Out of range
Cinque 4 - FOUNDATION WELL - NO SURVEYS						Out of range
FILE 3A-32H-K268 - OH - FINAL						Out of range
FILE 3B-32H-K268 - OH - FINAL						Out of range
FILE 3C-32H-K268 - OH - FINAL						Out of range
FILE 3D-32H-K268 - OH - FINAL						Out of range
FILE 3E-32H-K268 - OH - FINAL						Out of range
FILE 3F-32H-K268 - OH - FINAL						Out of range
FILE 3G-32H-K268 - OH - FINAL						Out of range

CC - Min centre to center distance or convergent point, SF - min separation factor, ES - min ellipse separation

Cathedral Energy Services

Anticollision Summary Report

Company:	Crestone Peak Resources	Local Co-ordinate Reference:	Well DREAM WEAVER North 3F-21H-N268 - Slot DREAM WEAVER North 3F-21H-N268 SHL
Project:	DJ BASIN	TVD Reference:	23' KB @ 4924.00usft (Original Well Elev)
Reference Site:	S21-T2N-R68W	MD Reference:	23' KB @ 4924.00usft (Original Well Elev)
Site Error:	0.00 usft	North Reference:	True
Reference Well:	DREAM WEAVER North 3F-21H-N268	Survey Calculation Method:	Minimum Curvature
Well Error:	0.00 usft	Output errors are at	2.00 sigma
Reference Wellbore	OH	Database:	USA EDM 5000 Multi Users DB
Reference Design:	PLAN #1	Offset TVD Reference:	Offset Datum

Site Name Offset Well - Wellbore - Design	Reference Measured Depth (usft)	Offset Measured Depth (usft)	Distance Between Centres (usft)	Distance Between Ellipses (usft)	Separation Factor	Warning
S32-T2N-R68W						
FILE 3H-32H-K268 - OH - FINAL						Out of range
FILE 3Q-32H-K268 - OH - FINAL						Out of range
FILE 3R-32H-K268 - OH - FINAL						Out of range
FILE 3S-32H-K268 - OH - FINAL						Out of range
FILE 3T-32H-K268 - OH - FINAL						Out of range
FILE FED 3I-32H-K268 - OH - FINAL						Out of range
FILE FED 3J-32H-K268 - OH - FINAL						Out of range
FILE FED 3K-32H-K268 - OH - FINAL						Out of range
FILE FED 3K-32H-K268 - OH - PLAN #4						Out of range
FILE FED 3L-32H-K268 - OH - FINAL						Out of range
FILE FED 3M-32H-K268 - OH - FINAL						Out of range
FILE FED 3N-32H-K268 - OH - FINAL						Out of range
FILE FED 3O-32H-K268 - OH - FINAL						Out of range
FILE FED 3P-32H-K268 - OH - FINAL						Out of range
Foster 33-5 - CPR WELL - SURVEYS						Out of range
Foster 43-5 - CPR WELL - SURVEYS						Out of range
Foster 4-5 - CPR WELL - SURVEYS						Out of range
Foster 4-6-5 - CPR WELL - SURVEYS						Out of range
Foster 6-4-5 - CPR - SURVEYS						Out of range
Foster 6-4-5X - CPR WELL - SURVEYS						Out of range
Foster 6-8-5 - CPR WELL - SURVEYS						Out of range
Foster 8-8-5 - CPR WELL - SURVEYS						Out of range
Foster E Unit 1 - CPR - GYRO						Out of range
Gene 11-5 - KERR-MCGEE - GYRO						Out of range
Hankins 1 - KPK WELL - NO SURVEYS						Out of range
Hauck 17-29 - KMG WELL - SURVEYS						Out of range
Hauck 24-29 - KMG WELL - SURVEYS						Out of range
Hauck 7-29 - KMG WELL - SURVEYS						Out of range
HSR-Bryant 9-30A - KMG WELL - GYRO						Out of range
HSR-Williams 10-20 - KMG WELL - GYRO						Out of range
HWY52 4A-32H-O268 - OH - FINAL						Out of range
HWY52 4B-32H-O268 - OH - FINAL						Out of range
HWY52 4C-32H-O268 - OH - FINAL						Out of range
HWY52 4D-32H-O268 - OH - FINAL						Out of range
HWY52 4E-32H-O268 - OH - FINAL						Out of range
HWY52 4F-32H-O268 - OH - FINAL						Out of range
HWY52 4G-32H-O268 - OH - FINAL						Out of range
HWY52 4H-32H-O268 - OH - FINAL						Out of range
HWY52 4I-32H-O268 - OH - FINAL						Out of range
HWY52 4J-32H-O268 - OH - FINAL						Out of range
HWY52 4K-32H-O268 - OH - FINAL						Out of range
HWY52 4L-32H-O268 - OH - FINAL						Out of range
HWY52 4M-32H-O268 - OH - FINAL						Out of range
HWY52 4N-32H-O268 - OH - FINAL						Out of range
HWY52 4O-32H-O268 - OH - FINAL						Out of range
HWY52 4P-32H-O268 - OH - FINAL						Out of range
HWY52 4Q-32H-O268 - OH - FINAL						Out of range
HWY52 4R-32H-O268 - OH - FINAL						Out of range
HWY52 4S-32H-O268 - OH - FINAL						Out of range
HWY52 4T-32H-O268 - OH - FINAL						Out of range
HWY52 4U-32H-O268 - OH - FINAL						Out of range

CC - Min centre to center distance or convergent point, SF - min separation factor, ES - min ellipse separation

Cathedral Energy Services

Anticollision Summary Report

Company:	Crestone Peak Resources	Local Co-ordinate Reference:	Well DREAM WEAVER North 3F-21H-N268 - Slot DREAM WEAVER North 3F-21H-N268 SHL
Project:	DJ BASIN	TVD Reference:	23' KB @ 4924.00usft (Original Well Elev)
Reference Site:	S21-T2N-R68W	MD Reference:	23' KB @ 4924.00usft (Original Well Elev)
Site Error:	0.00 usft	North Reference:	True
Reference Well:	DREAM WEAVER North 3F-21H-N268	Survey Calculation Method:	Minimum Curvature
Well Error:	0.00 usft	Output errors are at	2.00 sigma
Reference Wellbore	OH	Database:	USA EDM 5000 Multi Users DB
Reference Design:	PLAN #1	Offset TVD Reference:	Offset Datum

Site Name	Reference Measured Depth (usft)	Offset Measured Depth (usft)	Distance Between Centres (usft)	Distance Between Ellipses (usft)	Separation Factor	Warning
Summary						
Offset Well - Wellbore - Design						
S32-T2N-R68W						
HWY52 4V-32H-O268 - OH - FINAL						Out of range
HWY52 4W-32H-O268 - OH - FINAL						Out of range
Jack Hein Unit 1 - HS RESOURCES WELL - NO SURVE						Out of range
John Lamar 1 - KPK WELL - NO SURVEYS						Out of range
Johnson 32-30 - KPK WELL - NO SURVEYS						Out of range
Johnson 7-30A - KMG WELL - GYRO						Out of range
Kenneth Koch 1 - KPK WELL - NO SURVEYS						Out of range
Kenyon 34-19 - CPR WELL - SURVEYS						Out of range
Kenyon 4-8-19 - CPR WELL - SURVEYS						Out of range
Kenyon 8-4-19 - CPR WELL - SURVEYS						Out of range
Kenyon 8-6-19 - CPR WELL - SURVEYS						Out of range
Kenyon 8-8-19 - CPR WELL - SURVEYS						Out of range
Koch 41-6 - KPK WELL - NO SURVEYS						Out of range
Koch Kenneth E A-1 - KMG WELL - SURVEY						Out of range
Milton H Nelson H-1 - KMG WELL - GYRO						Out of range
Milton H Nelson I1 - KMG WELL - GYRO						Out of range
Milton H Nelson L1 - KMG WELL - GYRO						Out of range
Milton Nelson K1 - KMG WELL - GYRO						Out of range
Nelson 1 - TEXAS TEA - NO SURVEYS						Out of range
Nelson 1-A - TEXAS TEA WELL - NO SURVEYS						Out of range
Nelson 2 - TEXAS TEA WELL - NO SURVEYS						Out of range
Nelson 3 - TEXAS TEA WELL - NO SURVEYS						Out of range
Nelson 4 - TEXAS TEA WELL - NO SURVEYS						Out of range
Nelson 5 - TEXAS TEA WELL - NO SURVEYS						Out of range
Nelson D2 - KPK WELL - NO SURVEYS						Out of range
Nelson E Unit 1 - CPR WELL - GYRO						Out of range
Nelson E Unit 2 - CPR WELL - GYRO						Out of range
NOAA Federal 11-32 - CPR WELL - GYRO						Out of range
Osarkson 2-8-33 - CPR WELL - SURVEYS						Out of range
Oskarson 13-33 - CPR - GYRO						Out of range
Oskarson 23-33 - CPR WELL - GYRO						Out of range
Oskarson 4 - HRM - NO SURVEYS						Out of range
Oskarson 4-4-33 - CPR WELL - SURVEYS						Out of range
Oskarson 4-6-33 - CPR WELL - SURVEYS						Out of range
Oskarson 4-8-33 - CPR WELL - SURVEYS						Out of range
Oskarson E Unit 1 - CPR WELL - GYRO						Out of range
Paquette 13-5 - KMG WELL - GYRO						Out of range
Paquette 14-5 - KERR-MCGEE - GYRO						Out of range
Rasmussen 10-29 - KMG WELL - SURVEYS						Out of range
Rasmussen 14-29 - KMG WELL - SURVEYS						Out of range
Rasmussen 16-29 - KMG WELL - SURVEYS						Out of range
Rasmussen 19-29 - KMG WELL - SURVEYS						Out of range
Rasmussen 20-29 - KMG WELL - SURVEYS						Out of range
Rasmussen 22-29 - KMG WELL - SURVEYS						Out of range
Rasmussen 23-29 - KMG WELL - SURVEYS						Out of range
Rasmussen 25-29 - KMG WELL - SURVEYS						Out of range
Rasmussen 36-29 - KMG WELL - SURVEYS						Out of range
Rasmussen 37-29 - KMG WELL - SURVEYS						Out of range
Rasmussen 39-29 - KMG WELL - SURVEYS						Out of range
Rasmussen Fed 35-29 - KMG WELL - SURVEYS						Out of range
Ray Nelson 0-4-32 - CPR WELL - SURVEYS						Out of range

CC - Min centre to center distance or convergent point, SF - min separation factor, ES - min ellipse separation

Cathedral Energy Services

Anticollision Summary Report

Company:	Crestone Peak Resources	Local Co-ordinate Reference:	Well DREAM WEAVER North 3F-21H-N268 - Slot DREAM WEAVER North 3F-21H-N268 SHL
Project:	DJ BASIN	TVD Reference:	23' KB @ 4924.00usft (Original Well Elev)
Reference Site:	S21-T2N-R68W	MD Reference:	23' KB @ 4924.00usft (Original Well Elev)
Site Error:	0.00 usft	North Reference:	True
Reference Well:	DREAM WEAVER North 3F-21H-N268	Survey Calculation Method:	Minimum Curvature
Well Error:	0.00 usft	Output errors are at	2.00 sigma
Reference Wellbore	OH	Database:	USA EDM 5000 Multi Users DB
Reference Design:	PLAN #1	Offset TVD Reference:	Offset Datum

Site Name	Reference Measured Depth (usft)	Offset Measured Depth (usft)	Distance Between Centres (usft)	Distance Between Ellipses (usft)	Separation Factor	Warning
Summary						
Offset Well - Wellbore - Design						
S32-T2N-R68W						
Ray Nelson 12-32 - CPR WELL - GYRO						Out of range
Ray Nelson 13-32 - CPR WELL - SURVEYS						Out of range
Ray Nelson 14-32 - CPR WELL - SURVEYS						Out of range
Ray Nelson 23-32 - CPR WELL - GYRO						Out of range
Ray Nelson 24-32 - CPR WELL - SURVEYS						Out of range
Ray Nelson 2-4-32 - CPR WELL - SURVEYS						Out of range
Ray Nelson 33-32 - CPR WELL - SURVEYS						Out of range
Ray Nelson 34-32 - CPR WELL - SURVEYS						Out of range
Ray Nelson 44-32 - CPR WELL - SURVEYS						Out of range
Ray Nelson 4-4-32 - CPR WELL - SURVEYS						Out of range
Ray Nelson 4-6-32 - CPR WELL - SURVEYS						Out of range
Ray Nelson 8-8-32 - CPR WELL - SURVEYS						Out of range
Regnier Farms 32-19 - CPR WELL - GYRO						Out of range
Regnier Farms 33-19 - CPR WELL - GYRO						Out of range
Regnier Farms 42-19 - CPR WELL - GYRO						Out of range
Regnier Farms 43-19 - CPR WELL - SURVEYS						Out of range
Regnier Farms B 2 - CPR WELL - GYRO						Out of range
Regnier Farms B Unit 1 - CPR WELL - GYRO						Out of range
Sawdey Unit 2 - KMG WELL - GYRO						Out of range
Schriner 11-5 - KMG WELL - GYRO						Out of range
Schriner 12-5 - KMG WELL - GYRO						Out of range
SEC Four 12-4 - KMG WELL - SURVEYS						Out of range
SEC Four 13-4 - KMG WELL - SURVEYS						Out of range
SEC Four 14-4 - KMG WELL - SURVEYS						Out of range
SEC Four 21-4 - KMG WELL - SURVEYS						Out of range
SEC Four 22-4 - KMG WELL - SURVEYS						Out of range
SEC Four 31-4 - KMG WELL - SURVEYS						Out of range
SEC Four 32-4 - KMG WELL - SURVEYS						Out of range
SEC Four 33-4 - KMG WELL - SURVEYS						Out of range
SEC Four 3-4 - KMG WELL - SURVEYS						Out of range
SEC Four 35-4 - KMG WELL - SURVEYS						Out of range
SEC Four 4-4 - KMG WELL - SURVEYS						Out of range
SEC Four 5-4 - KMG WELL - SURVEYS						Out of range
SEC Four 6-4 - KMG WELL - SURVEYS						Out of range
Shaw 11-29A - KMG WELL - SURVEYS						Out of range
Shaw 12-29A - KMG - GYRO						Out of range
Shaw 15-20 - KPK - SURVEYS						Out of range
Shaw 16-20 - KPK - SURVEYS						Out of range
Tallgrass 1-8 - KMG - SURVEYS						Out of range
Tallgrass 2-8 - KMG - SURVEYS						Out of range
Tallgrass 3-8 - KMG - SURVEYS						Out of range
Tallgrass 4-8 - KMG - SURVEYS						Out of range
Tallgrass 5-8 - KMG - SURVEYS						Out of range
Tallgrass 6-8 - KMG WELL - SURVEYS						Out of range
Williams 10-20 - KMG WELL - SURVEYS						Out of range
Williams 11-20 - KMG WELL - SURVEYS						Out of range
Williams 13-20 - KMG WELL - SURVEYS						Out of range
Williams 14-20 - KMG WELL - SURVEYS						Out of range
Williams 16-20 - KMG WELL - SURVEYS	7,775.70	7,667.75	1,833.47	1,788.84	41.086	CC, ES
Williams 16-20 - KMG WELL - SURVEYS	8,300.00	7,707.65	1,919.36	1,870.30	39.128	SF
Williams 18-29 - KMG WELL - SURVEYS						Out of range

CC - Min centre to center distance or convergent point, SF - min separation factor, ES - min ellipse separation

Cathedral Energy Services

Anticollision Summary Report

Company:	Crestone Peak Resources	Local Co-ordinate Reference:	Well DREAM WEAVER North 3F-21H-N268 - Slot DREAM WEAVER North 3F-21H-N268 SHL
Project:	DJ BASIN	TVD Reference:	23' KB @ 4924.00usft (Original Well Elev)
Reference Site:	S21-T2N-R68W	MD Reference:	23' KB @ 4924.00usft (Original Well Elev)
Site Error:	0.00 usft	North Reference:	True
Reference Well:	DREAM WEAVER North 3F-21H-N268	Survey Calculation Method:	Minimum Curvature
Well Error:	0.00 usft	Output errors are at	2.00 sigma
Reference Wellbore	OH	Database:	USA EDM 5000 Multi Users DB
Reference Design:	PLAN #1	Offset TVD Reference:	Offset Datum

Summary						
Site Name	Reference Measured Depth (usft)	Offset Measured Depth (usft)	Distance Between Centres (usft)	Distance Between Ellipses (usft)	Separation Factor	Warning
Offset Well - Wellbore - Design						
S32-T2N-R68W						
Williams 23-20 - KMG WELL - SURVEYS						Out of range
Williams 24-20 - KMG WELL - SURVEYS						Out of range
Williams 24-20X - KMG WELL - SURVEYS						Out of range
Williams 25-20 - KMG WELL - SURVEYS						Out of range
Williams 35-20 - KMG WELL - SURVEYS						Out of range
Williams 36-20 - KMG WELL - SURVEYS						Out of range
Williams 39-20 - KMG WELL - SURVEYS	8,307.99	7,755.75	1,231.88	1,187.73	27.900	CC, ES
Williams 39-20 - KMG WELL - SURVEYS	8,900.00	7,762.74	1,366.73	1,314.16	25.995	SF
Williams 4-29 - KMG WELL - SURVEYS						Out of range
Williams 7-20 - KMG WELL - SURVEYS						Out of range
Williams 8-20 - KMG WELL - SURVEYS						Out of range
Williams 9-20 - KMG WELL - SURVEYS	9,070.52	7,596.67	1,809.62	1,757.65	34.820	CC
Williams 9-20 - KMG WELL - SURVEYS	9,100.00	7,596.79	1,809.86	1,757.64	34.661	ES
Williams 9-20 - KMG WELL - SURVEYS	9,600.00	7,598.89	1,885.48	1,829.16	33.474	SF
Woolley 41-7 - CPR WELL - GYRO						Out of range
Woolley 42-7 KPK - KPK WELL - SURVEYS						Out of range

CC - Min centre to center distance or convergent point, SF - min separation factor, ES - min ellipse separation

Cathedral Energy Services

Anticollision Summary Report

Company:	Crestone Peak Resources	Local Co-ordinate Reference:	Well DREAM WEAVER North 3F-21H-N268 - Slot DREAM WEAVER North 3F-21H-N268 SHL
Project:	DJ BASIN	TVD Reference:	23' KB @ 4924.00usft (Original Well Elev)
Reference Site:	S21-T2N-R68W	MD Reference:	23' KB @ 4924.00usft (Original Well Elev)
Site Error:	0.00 usft	North Reference:	True
Reference Well:	DREAM WEAVER North 3F-21H-N268	Survey Calculation Method:	Minimum Curvature
Well Error:	0.00 usft	Output errors are at	2.00 sigma
Reference Wellbore	OH	Database:	USA EDM 5000 Multi Users DB
Reference Design:	PLAN #1	Offset TVD Reference:	Offset Datum

Site Name	Reference Measured Depth (usft)	Offset Measured Depth (usft)	Distance Between Centres (usft)	Distance Between Ellipses (usft)	Separation Factor	Warning
Summary						
Offset Well - Wellbore - Design						
S7-T1N-R68W (Woolley-S/B/Morgan Hills)						
BAILEY 8-8-1 (EXISTING) - CPR WELL - SURVEYS						Out of range
BEARDEN 0-6-6 (EXISTING) - CPR WELL - SURVEYS						Out of range
BEARDEN 1 (EXISTING) - CPR WELL - GYRO						Out of range
BEARDEN 13-6 (EXISTING) - CPR WELL - SURVEYS						Out of range
BEARDEN 14-6 (EXISTING) - CPR WELL - SURVEYS						Out of range
BEARDEN 23-6 (EXISTING) - ENCANA WELL - GYRO						Out of range
BEARDEN 24-6 (EXISTING) - CPR WELL - CPR WELL						Out of range
BEARDEN 2-4-6 (EXISTING) - CPR WELL - SURVEYS						Out of range
BEARDEN 2-8-6 (EXISTING) - CPR WELL - SURVEYS						Out of range
BECKY 1 (EXISTING) - FOUNDATION WELL - NO SUR						Out of range
BECKY 2-6 (EXISTING) - EXTRACTION WELL - GYRO						Out of range
BECKY 5-6 (EXISTING) - FOUNDATION WELL - NO SU						Out of range
BECKY 7-6 (EXISTING) - EXTRACTION WELL - GYRO						Out of range
BILLINGS 21-7 (EXISTING) - KPK WELL - SURVEYS						Out of range
BULTHAUP 10-6 (EXISTING) - KMG WELL - SURVEYS						Out of range
BULTHAUP 15-6 (EXISTING) - KMG WELL - GYRO						Out of range
BULTHAUP 17-6 (EXISTING) - KMG WELL - SURVEYS						Out of range
BULTHAUP 21-6 (EXISTING) - KMG WELL - SURVEYS						Out of range
BULTHAUP 23-6 (EXISTING) - KMG WELL - SURVEYS						Out of range
BULTHAUP 27-6 (EXISTING) - KMG WELL - SURVEYS						Out of range
CANYON CREEK 43-13 (EXISTING) - CPR WELL - SUR						Out of range
CANYON CREEK 8-6-13X (EXISTING) - CPR WELL - S						Out of range
CHAMPLIN-86-AMOCO 1 (EXISTING) - AMOCO - SURV						Out of range
COAL CREEK 6-0-19 (EXISTING) - CPR WELL - STK						Out of range
COAL CREEK 6-0-19 (EXISTING) - OH - SURVEYS						Out of range
COMMONS 28-19 (EXISTING) - KMG WELL - SURVEYS						Out of range
ERIE CHAMPLIN 18-9 (EXISTING) - EXISTING - SURVE						Out of range
ERIE CHAMPLIN B UNIT 1 - CPR WELL - GYRO						Out of range
ERIE CHAMPLIN B UNIT 2 - CPR WELL - GYRO						Out of range
I & J 7-6 (EXISTING) - KMG WELL - GYRO						Out of range
Morgan Hills 1A-7H-A168 - HZ - FINAL						Out of range
Morgan Hills 1B-7H-A168 - HZ - FINAL						Out of range
Morgan Hills 1C-7H-A168 - HZ - FINAL						Out of range
Morgan Hills 1D-7H-A168 - HZ - FINAL						Out of range
Morgan Hills 1E-7H-A168 - HZ - FINAL						Out of range
Morgan Hills 1F-7H-A168 - HZ - FINAL						Out of range
Morgan Hills 1G-7H-A168 - HZ - FINAL						Out of range
Morgan Hills 1H-7H-A168 - HZ - FINAL						Out of range
Morgan Hills 1I-7H-A168 - OH - FINAL						Out of range
SOSA 11-18 (EXISTING) - CPR WELL - SURVEYS						Out of range
SOSA 12-18 (EXISTING) - CPR WELL - SURVEYS						Out of range
SOSA 21-18 (EXISTING) - CPR WELL - SURVEYS						Out of range
SOSA 22-18 (EXISTING) - CPR WELL - SURVEYS						Out of range
SOSA A UNIT 1 (EXISTING) - CPR WELL - GYRO						Out of range
TALLGRASS 33-17 (EXISTING) - KMG WELL - SURVEY						Out of range
THOMAS 14-7(EXISTING) - CPR WELL - SURVEYS						Out of range
THOMAS 24-7 (EXISTING) - CPR WELL - SURVEYS						Out of range
THOMAS 2-8-7 (EXISTING) - CPR WELL - SURVEYS						Out of range
THOMAS 33-7 (EXISTING) - CPR WELL - SURVEYS						Out of range
THOMAS 7-12 (EXISTING) - CPR WELL - GYRO						Out of range
Thomas 7-14 (AL) - Existing - NO SURVEYS						Out of range

CC - Min centre to center distance or convergent point, SF - min separation factor, ES - min ellipse separation

Cathedral Energy Services

Anticollision Summary Report

Company:	Crestone Peak Resources	Local Co-ordinate Reference:	Well DREAM WEAVER North 3F-21H-N268 - Slot DREAM WEAVER North 3F-21H-N268 SHL
Project:	DJ BASIN	TVD Reference:	23' KB @ 4924.00usft (Original Well Elev)
Reference Site:	S21-T2N-R68W	MD Reference:	23' KB @ 4924.00usft (Original Well Elev)
Site Error:	0.00 usft	North Reference:	True
Reference Well:	DREAM WEAVER North 3F-21H-N268	Survey Calculation Method:	Minimum Curvature
Well Error:	0.00 usft	Output errors are at	2.00 sigma
Reference Wellbore	OH	Database:	USA EDM 5000 Multi Users DB
Reference Design:	PLAN #1	Offset TVD Reference:	Offset Datum

Site Name	Reference Measured Depth (usft)	Offset Measured Depth (usft)	Distance Between Centres (usft)	Distance Between Ellipses (usft)	Separation Factor	Warning
Summary						
Offset Well - Wellbore - Design						
S7-T1N-R68W (Woolley-S/B/Morgan Hills)						
THOMAS E UNIT 1 (EXISTING) - CPR WELL - GYRO						Out of range
THOMAS E UNIT 2 - VESSELS WELL - INC ONLY						Out of range
THOMAS K UNIT 1 (EXISTING) - EXISTING - NO SURV						Out of range
WHEELER G UNIT 1 - CPR - GYRO						Out of range
WIGGETT 13-1 - CPR - GYRO						Out of range
WIGGETT 8-2-13 (EXISTING) - CPR WELL - SURVEYS						Out of range
WOOLLEY 11-7 (EXISTING) - CPR WELL - SURVEYS						Out of range
WOOLLEY 12-7 (EXISTING) - CPR WELL - GYRO						Out of range
WOOLLEY 21-7 (EXISTING) - CPR WELL - GYRO						Out of range
WOOLLEY 22-7 (EXISTING) - CPR WELL - SURVEYS						Out of range
WOOLLEY 2-4-7 (EXISTING) - CPR WELL - SURVEYS						Out of range
WOOLLEY 4-0-7 (EXISTING) - CPR WELL - SURVEYS						Out of range
WOOLLEY 41-7 (EXISTING) - CPR WELL - GYRO						Out of range
WOOLLEY 42-7 (EXISTING) - CPR WELL - GYRO						Out of range
WOOLLEY 42-7 KPK (EXISTING) - KPK WELL - SURVE						Out of range
WOOLLEY A 1-7 (EXISTING) - CPR WELL - GYRO						Out of range
WOOLLEY F UNIT 1 (EXISTING) - CPR WELL - GYRO						Out of range
Woolley-Becky 2A-7H-E168 - Hz - FINAL						Out of range
Woolley-Becky 2B-7H-E168 - Hz - FINAL						Out of range
Woolley-Becky 2C-7H-E168 - Hz - FINAL						Out of range
Woolley-Becky 2D-7H-E168 - Hz - FINAL						Out of range
Woolley-Becky 2E-7H-E168 - Hz - FINAL						Out of range
Woolley-Becky 2F-7H-E168 - Hz - FINAL						Out of range
Woolley-Becky 2G-7H-E168 - Hz - FINAL						Out of range
Woolley-Becky 2H-7H-E168 - Hz - FINAL						Out of range
Woolley-Sosa 2A-7H-E168 - OH - FINAL						Out of range
Woolley-Sosa 2B-7H-E168 - HZ - FINAL						Out of range
Woolley-Sosa 2C-7H-E168 - HZ - FINAL						Out of range
Woolley-Sosa 2D-7H-E168 - HZ - FINAL						Out of range
Woolley-Sosa 2E-7H-E168 - HZ - FINAL						Out of range
Woolley-Sosa 2F-7H-E168 - HZ - FINAL						Out of range
Woolley-Sosa 2G-7H-E168 - HZ - FINAL						Out of range

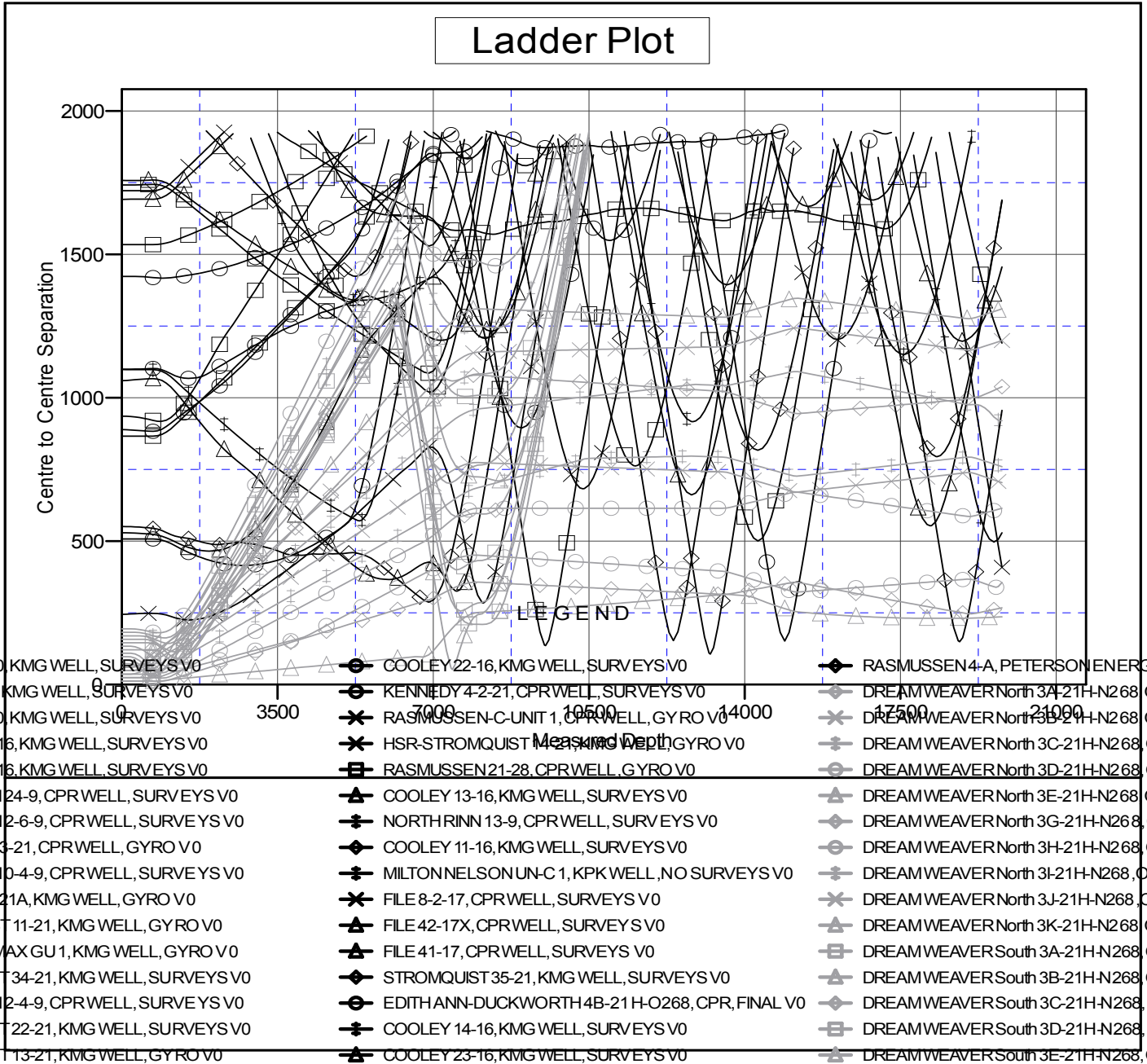
Cathedral Energy Services

Anticollision Summary Report

Company:	Crestone Peak Resources	Local Co-ordinate Reference:	Well DREAM WEAVER North 3F-21H-N268 - Slot DREAM WEAVER North 3F-21H-N268 SHL
Project:	DJ BASIN	TVD Reference:	23' KB @ 4924.00usft (Original Well Elev)
Reference Site:	S21-T2N-R68W	MD Reference:	23' KB @ 4924.00usft (Original Well Elev)
Site Error:	0.00 usft	North Reference:	True
Reference Well:	DREAM WEAVER North 3F-21H-N268	Survey Calculation Method:	Minimum Curvature
Well Error:	0.00 usft	Output errors are at	2.00 sigma
Reference Wellbore	OH	Database:	USA EDM 5000 Multi Users DB
Reference Design:	PLAN #1	Offset TVD Reference:	Offset Datum

Reference Depths are relative to 23' KB @ 4924.00usft (Original Well E
 Offset Depths are relative to Offset Datum
 Central Meridian is -105.500000

Coordinates are relative to: DREAM WEAVER North 3F-21H-N268 - Slot DREAM
 Coordinate System is US State Plane 1983, Colorado Northern Zone
 Grid Convergence at Surface is: 0.32°



CC - Min centre to center distance or convergent point, SF - min separation factor, ES - min ellipse separation

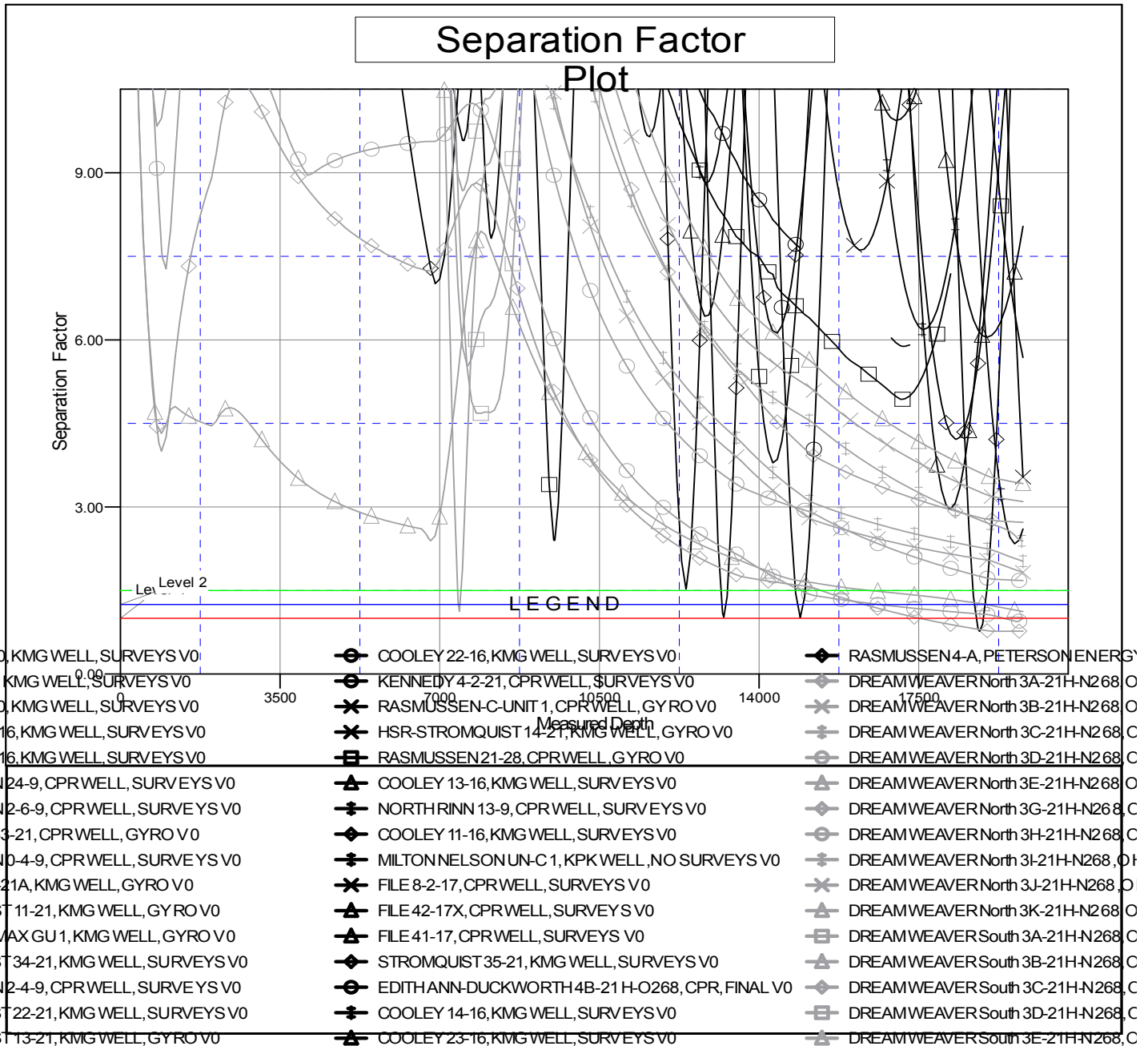
Cathedral Energy Services

Anticollision Summary Report

Company:	Crestone Peak Resources	Local Co-ordinate Reference:	Well DREAM WEAVER North 3F-21H-N268 - Slot DREAM WEAVER North 3F-21H-N268 SHL
Project:	DJ BASIN	TVD Reference:	23' KB @ 4924.00usft (Original Well Elev)
Reference Site:	S21-T2N-R68W	MD Reference:	23' KB @ 4924.00usft (Original Well Elev)
Site Error:	0.00 usft	North Reference:	True
Reference Well:	DREAM WEAVER North 3F-21H-N268	Survey Calculation Method:	Minimum Curvature
Well Error:	0.00 usft	Output errors are at	2.00 sigma
Reference Wellbore	OH	Database:	USA EDM 5000 Multi Users DB
Reference Design:	PLAN #1	Offset TVD Reference:	Offset Datum

Reference Depths are relative to 23' KB @ 4924.00usft (Original Well E
 Offset Depths are relative to Offset Datum
 Central Meridian is -105.500000

Coordinates are relative to: DREAM WEAVER North 3F-21H-N268 - Slot DREAM
 Coordinate System is US State Plane 1983, Colorado Northern Zone
 Grid Convergence at Surface is: 0.32°



CC - Min centre to center distance or convergent point, SF - min separation factor, ES - min ellipse separation