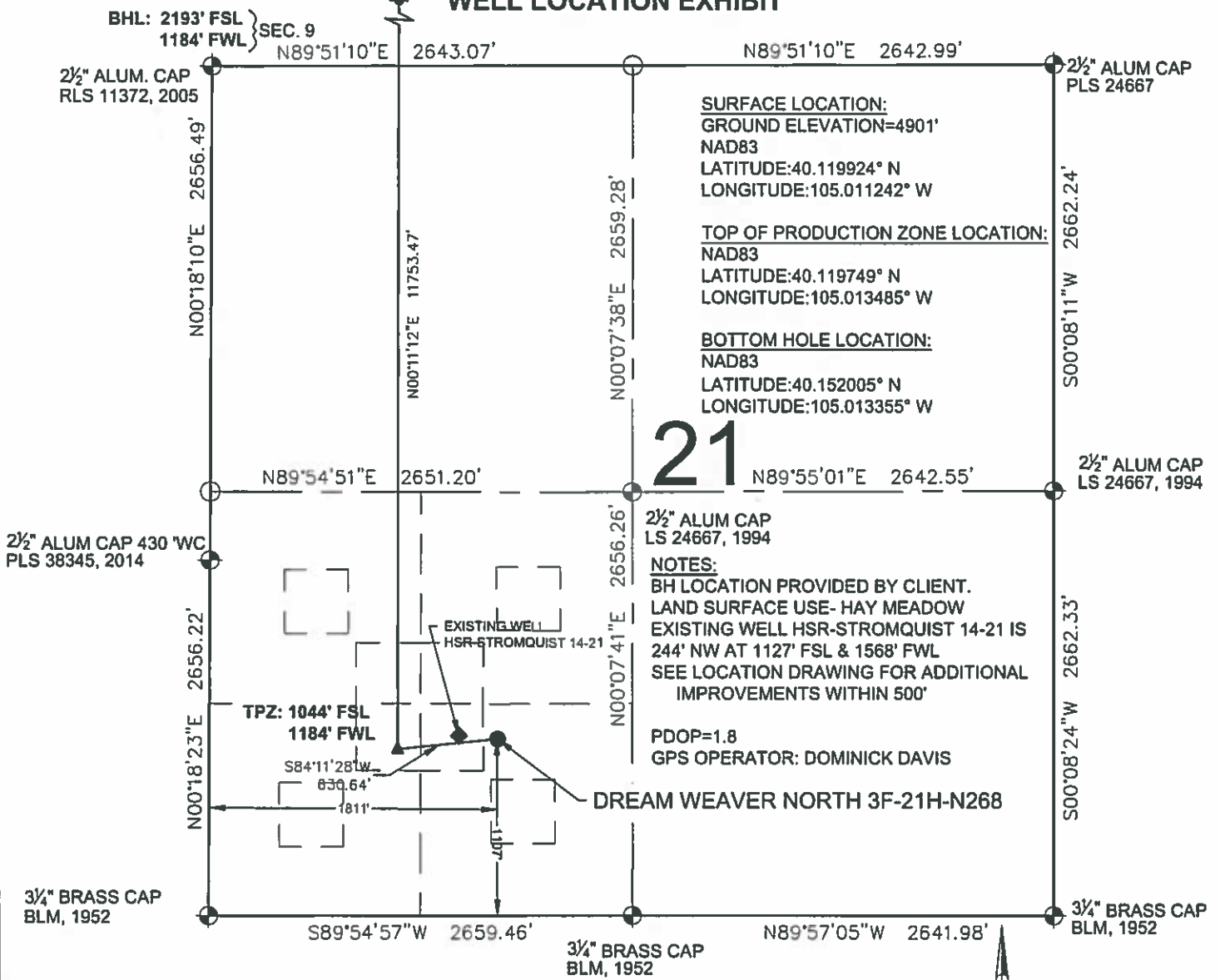


# DREAM WEAVER NORTH 3F-21H-N268 WELL LOCATION EXHIBIT



### LEGEND

- ⊕ = EXISTING MONUMENT      ⬇ = BOTTOM HOLE
- = CALCULATED POSITION    ▲ = TOP OF PRODUCTION ZONE
- = PROPOSED WELL        TPZ = TOP OF PRODUCTION ZONE
- ◆ = EXISTING WELL        BHL = BOTTOM HOLE LOCATION
- WC = WITNESS CORNER

### NOTES:

1. THIS FIELD SURVEY CONFORMS TO THE MINIMUM STANDARDS SET BY THE C.O.G.C.C., RULE NO. 215
2. ALL DISTANCES AND BEARINGS SHOWN HEREON ARE GROUND VALUES AS GPS MEASURED IN THE FIELD, WITH TIES TO WELLS MEASURED PERPENDICULAR TO LINES SHOWN HEREON. THIS LOW DISTORTION PROJECTION (LDP) IS BASED ON THE NORTH AMERICAN DATUM OF 1983, U.S. SURVEY FOOT WITH A LATITUDE ORIGIN OF 40.131498°N, A CENTRAL MERIDIAN LONGITUDE OF 104.998741°W, AND A SCALE FACTOR ON THE CENTRAL MERIDIAN OF 1.000232 (EXACT). THE LDP BASIS OF BEARINGS IS GEODETIC NORTH.
3. FIELD VERIFICATION OF MONUMENTS COMPLETED WITHIN 1 YEAR OF SIGNATURE DATE, UNLESS OTHERWISE NOTED.

### WELL DREAM WEAVER NORTH 3F-21H-N268 TO BE LOCATED 1107' FSL & 1811' FWL

I, ROBERT J. GUFFEY, A LICENSED PROFESSIONAL LAND SURVEYOR IN THE STATE OF COLORADO, DO HEREBY STATE TO CRESTONE PEAK RESOURCES THAT THE WELL LOCATION EXHIBIT SHOWN HEREON WAS PREPARED BY ME OR UNDER MY DIRECT SUPERVISION AND THE DRAWING SHOWN HEREON ACCURATELY DEPICTS THE PROPOSED LOCATION OF THE WELL. THIS EXHIBIT MEETS THE REQUIREMENTS OF A GIS LAND POSITION AS DEFINED BY SECTION 38-51-102 (7.5) C.R.S. AND AS SUCH PER SECTION 38-51-109.3 C.R.S. CANNOT BE RELIED UPON TO DETERMINE OWNERSHIP.

ROBERT J. GUFFEY, PLS 20680  
COLORADO LICENSED PROFESSIONAL LAND SURVEYOR  
FOR AND ON BEHALF OF P.F.S., LLC  
d.b.a. ASCENT GEOMATICS SOLUTIONS



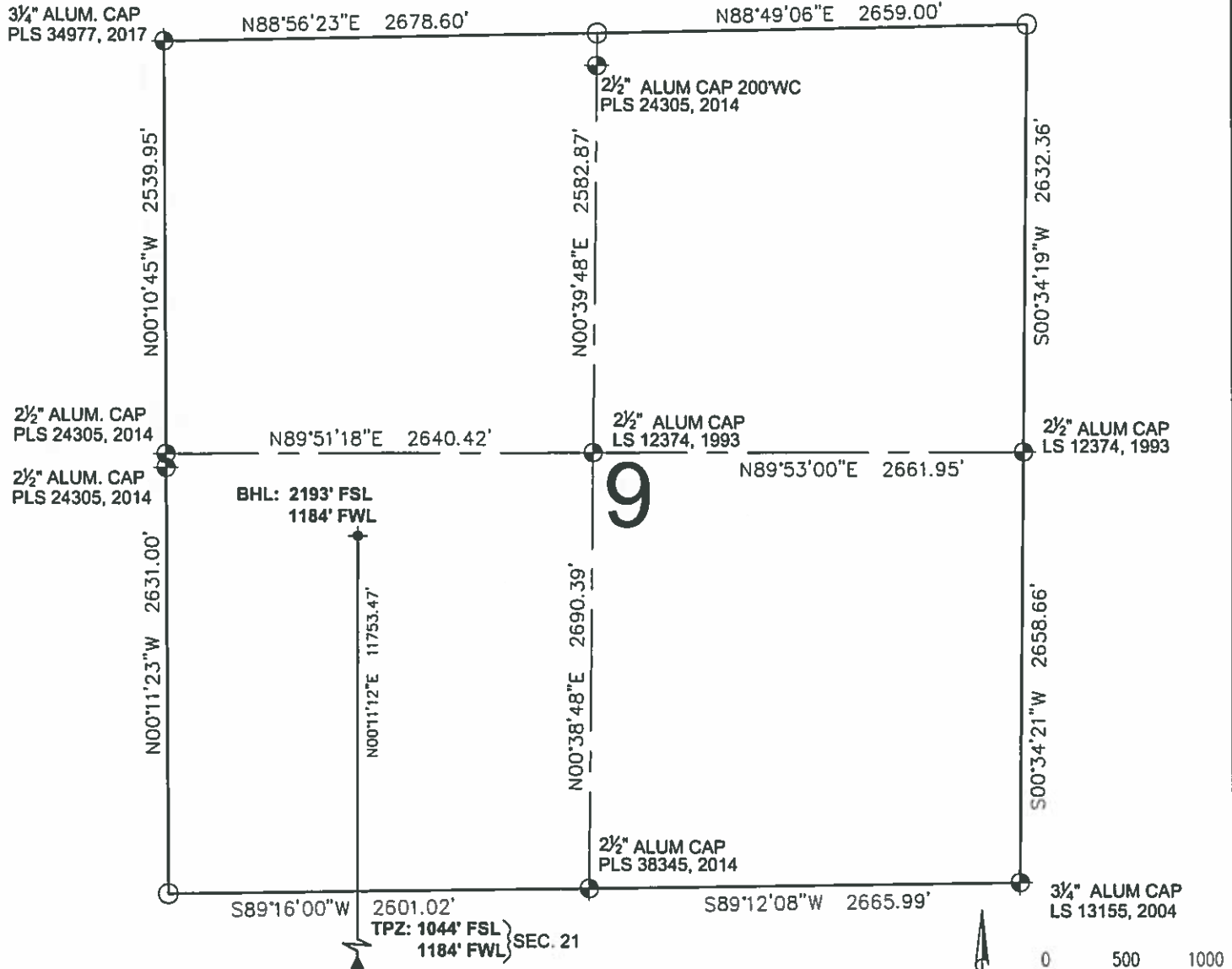
NOTICE: ACCORDING TO COLORADO LAW YOU MUST COMMENCE ANY LEGAL ACTION BASED UPON ANY DEFECT IN THIS SURVEY WITHIN THREE YEARS AFTER YOU FIRST DISCOVER SUCH DEFECT. IN NO EVENT MAY ANY ACTION BASED UPON ANY DEFECT IN THIS SURVEY BE COMMENCED MORE THAN TEN YEARS FROM THIS SAID DATE OF THIS CERTIFICATION SHOWN HEREON.

SHEET 1 OF 3

<p><b>ASCENT</b> GEOMATICS SOLUTIONS</p> <p style="font-size: 8px;">7535 Hilltop Circle Denver, CO 80221 (303) 928-7128 www.ascentgeomatics.com</p>	FIELD DATE: <b>02-13-18</b>	WELL NAME: <b>DREAM WEAVER NORTH 3F-21H-N268</b>	PREPARED FOR:
	DRAWING DATE: <b>04-12-18</b>	SURFACE LOCATION: <b>SE 1/4 SW 1/4 SEC. 21, T2N, R68W, 6TH P.M. WELD COUNTY, COLORADO</b>	<p><b>CRESTONE PEAK</b> RESOURCES</p>
BY: <b>RMC</b>	CHECKED: <b>CLP</b>		





# DREAM WEAVER NORTH 3F-21H-N268 WELL LOCATION EXHIBIT



**LEGEND**

- ⊕ = EXISTING MONUMENT      ✦ = BOTTOM HOLE
  - = CALCULATED POSITION    ▲ = TOP OF PRODUCTION ZONE
  - = PROPOSED WELL
  - ◆ = EXISTING WELL
- TPZ = TOP OF PRODUCTION ZONE  
 BHL = BOTTOM HOLE LOCATION  
 WC = WITNESS CORNER
- ROBERT J. GUFFEY, PLS 20680  
 COLORADO LICENSED PROFESSIONAL LAND SURVEYOR  
 FOR AND ON BEHALF OF P.F.S., LLC  
 d.b.a. ASCENT GEOMATICS SOLUTIONS

SHEET 3 OF 3

 <p style="font-size: small;">7535 HiTop Circle Denver, CO 80221 (303) 929-7128 www.ascentgeomatics.com</p>	FIELD DATE <b>02-13-18</b>	WELL NAME <b>DREAM WEAVER NORTH 3F-21H-N268</b>	PREPARED FOR:  <p style="font-size: small;"><b>CRESTONE PEAK RESOURCES</b></p>
	DRAWING DATE: <b>04-12-18</b>	SURFACE LOCATION <b>SE 1/4 SW 1/4 SEC. 21, T2N, R68W, 6TH P.M. WELD COUNTY, COLORADO</b>	
BY: <b>RMC</b>	CHECKED: <b>CLP</b>		