



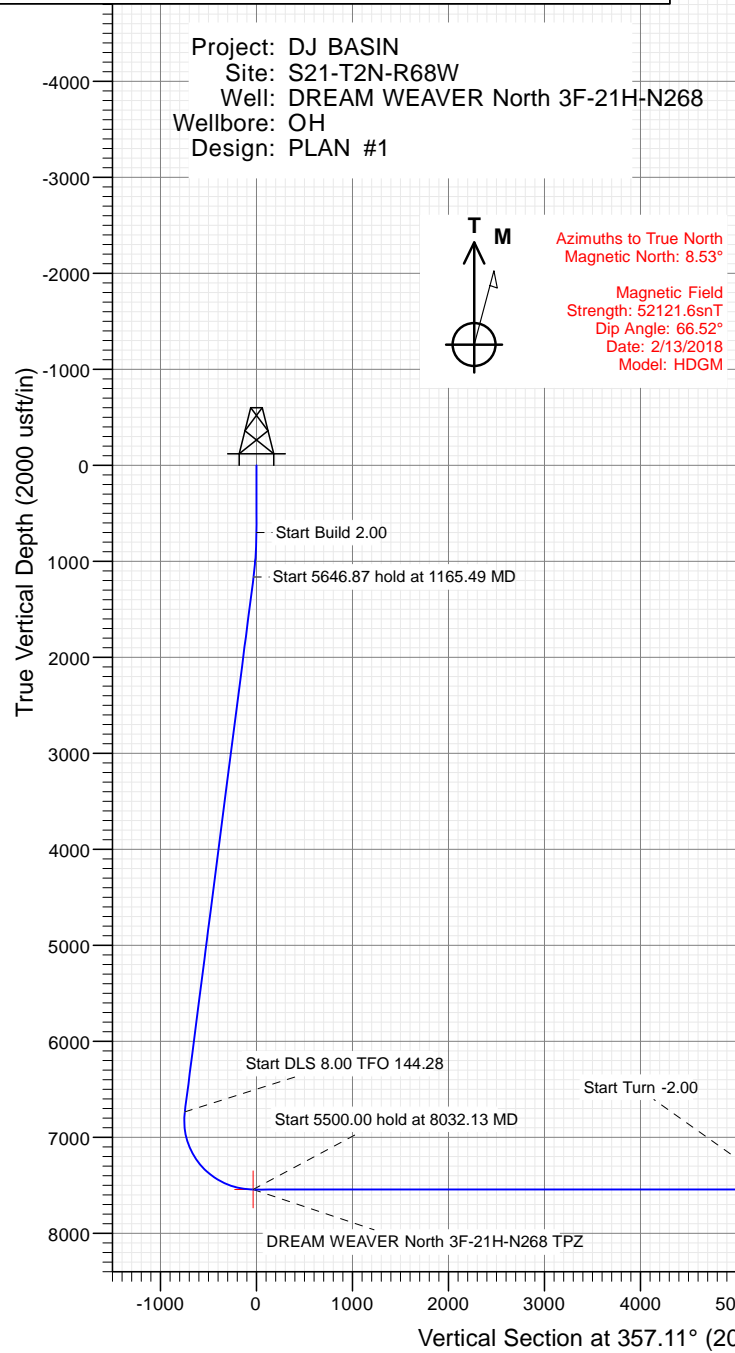
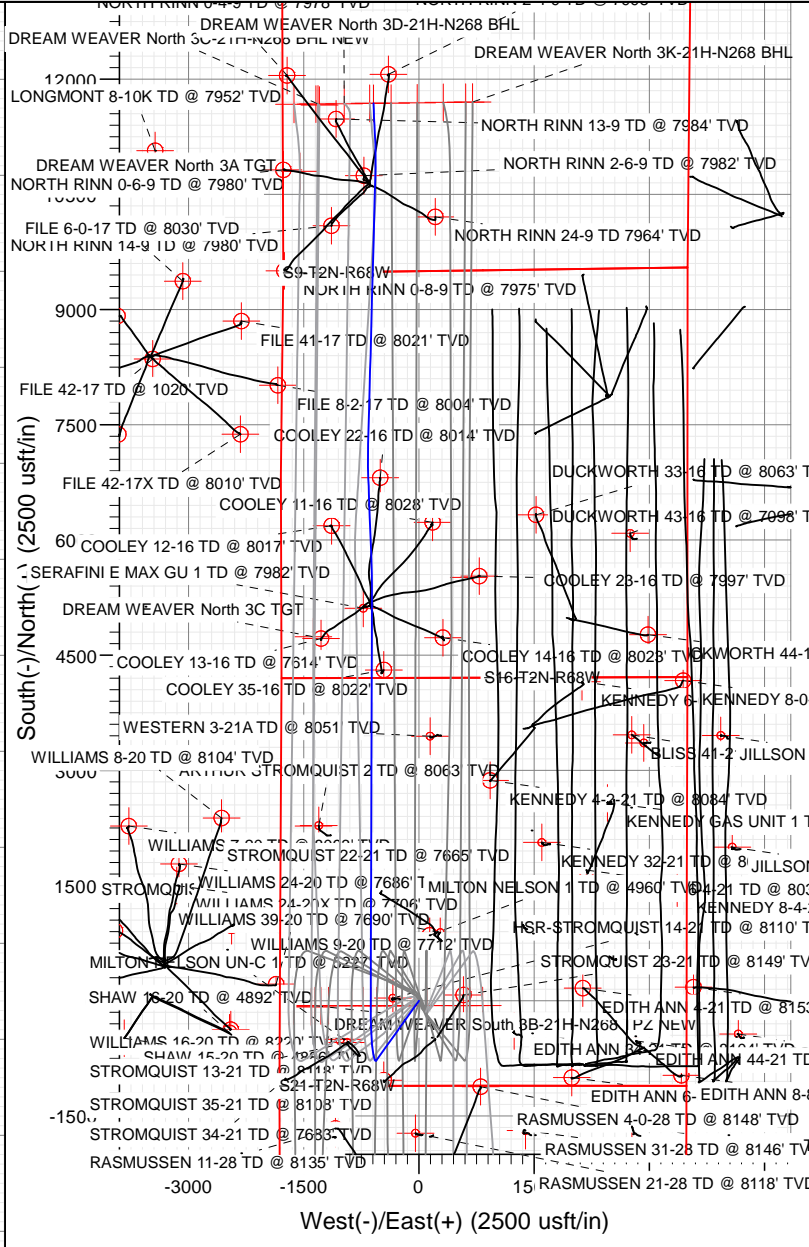
Sec	MD	Inc	Azi	TVD	+N/-S	+E/-W	Dleg	TFace	V Sect	Target
1	0.00	0.00	0.00	0.00	0.00	0.00	0.00	0.00	0.00	
2	700.00	0.00	0.00	700.00	0.00	0.00	0.00	0.00	0.00	
3	1165.49	9.31	215.54	1163.45	-30.71	-21.93	2.00	215.54	-29.56	
4	6812.36	9.31	215.54	6735.93	-774.07	-552.89	0.00	0.00	-745.18	
5	8032.13	90.00	0.18	7543.00	-63.90	-627.22	8.00	144.28	-32.16	DREAM WEAVER North 3F-21H-N268 TPZ
6	13532.13	90.00	0.18	7543.00	5436.08	-609.94	0.00	0.00	5459.93	
7	13646.13	90.00	357.90	7543.00	5550.05	-611.85	2.00	-90.00	5573.86	
8	15046.13	90.00	357.90	7543.00	6949.11	-663.15	0.00	0.00	6973.73	
9	15228.43	90.00	1.55	7543.00	7131.38	-664.04	2.00	90.00	7155.81	
10	18983.04	90.00	1.55	7543.00	10884.62	-562.73	0.00	0.00	10899.15	
11	19185.35	90.00	357.50	7543.00	11086.88	-564.41	2.00	-90.00	11101.24	
12	19785.35	90.00	357.50	7543.00	11686.31	-590.59	0.00	0.00	11701.22	DREAM WEAVER North 3F-21H-N268 BHL

PLAN #1
 DREAM WEAVER North 3F-21H-N268
 23' KB @ 4924.00usft (Original Well Elev)
 Ground Level @ 4901.00
 North American Datum 1983
 Well DREAM WEAVER North 3F-21H-N268 - Slot DREAM WEAVER North 3F-21H-N268 SHL True North

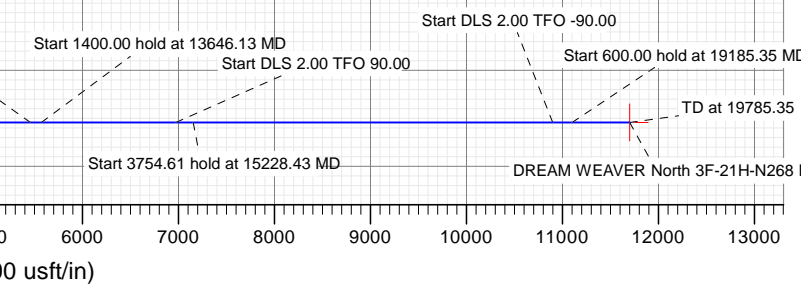
Type	Target	Azimuth	Origin	Type	N/S	E/W	From	TVD
TD	No Target (Freehand)	357.11	Slot	0.00	0.00	0.00	0.00	0.00

Name: DREAM WEAVER North 3F-21H-N268 BHL
 DREAM WEAVER North 3F-21H-N268 TPZ

TVD	+N/-S	+E/-W	Latitude	Longitude
7543.00	11686.31	-590.59	40.152005	-105.013955
7543.00	-63.90	-627.22	40.119749	-105.013485



Azimuths to True North
 Magnetic North: 8.53°
 Magnetic Field
 Strength: 52121.6snT
 Dip Angle: 66.52°
 Date: 2/13/2018
 Model: HDGM



Cathedral Energy Services

Planning Report

Database:	USA EDM 5000 Multi Users DB	Local Co-ordinate Reference:	Well DREAM WEAVER North 3F-21H-N268 - Slo
Company:	Crestone Peak Resources	TVD Reference:	23' KB @ 4924.00usft (Original Well Elev)
Project:	DJ BASIN	MD Reference:	23' KB @ 4924.00usft (Original Well Elev)
Site:	S21-T2N-R68W	North Reference:	True
Well:	DREAM WEAVER North 3F-21H-N268	Survey Calculation Method:	Minimum Curvature
Wellbore:	OH		
Design:	PLAN #1		

Project	DJ BASIN		
Map System:	US State Plane 1983	System Datum:	Mean Sea Level
Geo Datum:	North American Datum 1983		
Map Zone:	Colorado Northern Zone		

Site	S21-T2N-R68W				
Site Position:		Northing:	1,286,960.17 usft	Latitude:	40.120065
From:	Lat/Long	Easting:	3,136,653.11 usft	Longitude:	-105.011358
Position Uncertainty:	0.00 usft	Slot Radius:	13-3/16"	Grid Convergence:	0.32 °

Well	DREAM WEAVER North 3F-21H-N268 - Slot DREAM WEAVER North 3F-21H-N268 SHL					
Well Position	+N/-S	0.00 usft	Northing:	1,286,909.15 usft	Latitude:	40.119924
	+E/-W	0.00 usft	Easting:	3,136,685.77 usft	Longitude:	-105.011242
Position Uncertainty		0.00 usft	Wellhead Elevation:	usft	Ground Level:	4,901.00 usft

Wellbore	OH				
Magnetics	Model Name	Sample Date	Declination	Dip Angle	Field Strength
			(°)	(°)	(nT)
	HDGM	2/13/2018	8.53	66.52	52,121.60000000

Design	PLAN #1			
Audit Notes:				
Version:	Phase:	PLAN	Tie On Depth:	0.00
Vertical Section:	Depth From (TVD)	+N/-S	+E/-W	Direction
	(usft)	(usft)	(usft)	(°)
	0.00	0.00	0.00	357.11

Plan Sections										
Measured Depth (usft)	Inclination (°)	Azimuth (°)	Vertical Depth (usft)	+N/-S (usft)	+E/-W (usft)	Dogleg Rate (°/100usft)	Build Rate (°/100usft)	Turn Rate (°/100usft)	TFO (°)	Target
0.00	0.00	0.00	0.00	0.00	0.00	0.00	0.00	0.00	0.00	
700.00	0.00	0.00	700.00	0.00	0.00	0.00	0.00	0.00	0.00	
1,165.49	9.31	215.54	1,163.45	-30.71	-21.93	2.00	2.00	0.00	215.54	
6,812.36	9.31	215.54	6,735.93	-774.07	-552.89	0.00	0.00	0.00	0.00	
8,032.13	90.00	0.18	7,543.00	-63.90	-627.22	8.00	6.62	11.86	144.28	DREAM WEAVER Nc
13,532.13	90.00	0.18	7,543.00	5,436.08	-609.94	0.00	0.00	0.00	0.00	
13,646.13	90.00	357.90	7,543.00	5,550.05	-611.85	2.00	0.00	-2.00	-90.00	
15,046.13	90.00	357.90	7,543.00	6,949.11	-663.15	0.00	0.00	0.00	0.00	
15,228.43	90.00	1.55	7,543.00	7,131.38	-664.04	2.00	0.00	2.00	90.00	
18,983.04	90.00	1.55	7,543.00	10,884.62	-562.73	0.00	0.00	0.00	0.00	
19,185.35	90.00	357.50	7,543.00	11,086.88	-564.41	2.00	0.00	-2.00	-90.00	
19,785.35	90.00	357.50	7,543.00	11,686.31	-590.59	0.00	0.00	0.00	0.00	DREAM WEAVER Nc

Cathedral Energy Services

Planning Report

Database:	USA EDM 5000 Multi Users DB	Local Co-ordinate Reference:	Well DREAM WEAVER North 3F-21H-N268 - Slo
Company:	Crestone Peak Resources	TVD Reference:	23' KB @ 4924.00usft (Original Well Elev)
Project:	DJ BASIN	MD Reference:	23' KB @ 4924.00usft (Original Well Elev)
Site:	S21-T2N-R68W	North Reference:	True
Well:	DREAM WEAVER North 3F-21H-N268	Survey Calculation Method:	Minimum Curvature
Wellbore:	OH		
Design:	PLAN #1		

Planned Survey

Measured Depth (usft)	Inclination (°)	Azimuth (°)	Vertical Depth (usft)	+N/-S (usft)	+E/-W (usft)	Vertical Section (usft)	Dogleg Rate (°/100usft)	Build Rate (°/100u)	Comments / Formations
0.00	0.00	0.00	0.00	0.00	0.00	0.00	0.00	0.00	
100.00	0.00	0.00	100.00	0.00	0.00	0.00	0.00	0.00	
200.00	0.00	0.00	200.00	0.00	0.00	0.00	0.00	0.00	
300.00	0.00	0.00	300.00	0.00	0.00	0.00	0.00	0.00	
400.00	0.00	0.00	400.00	0.00	0.00	0.00	0.00	0.00	
500.00	0.00	0.00	500.00	0.00	0.00	0.00	0.00	0.00	
600.00	0.00	0.00	600.00	0.00	0.00	0.00	0.00	0.00	
700.00	0.00	0.00	700.00	0.00	0.00	0.00	0.00	0.00	
800.00	2.00	215.54	799.98	-1.42	-1.01	-1.37	2.00	2.00	
900.00	4.00	215.54	899.84	-5.68	-4.06	-5.47	2.00	2.00	
1,000.00	6.00	215.54	999.45	-12.77	-9.12	-12.29	2.00	2.00	
1,100.00	8.00	215.54	1,098.70	-22.69	-16.20	-21.84	2.00	2.00	
1,165.49	9.31	215.54	1,163.45	-30.71	-21.93	-29.56	2.00	2.00	
1,200.00	9.31	215.54	1,197.50	-35.25	-25.18	-33.93	0.00	0.00	
1,300.00	9.31	215.54	1,296.18	-48.41	-34.58	-46.61	0.00	0.00	
1,400.00	9.31	215.54	1,394.87	-61.58	-43.98	-59.28	0.00	0.00	
1,500.00	9.31	215.54	1,493.55	-74.74	-53.39	-71.95	0.00	0.00	
1,600.00	9.31	215.54	1,592.23	-87.91	-62.79	-84.62	0.00	0.00	
1,700.00	9.31	215.54	1,690.91	-101.07	-72.19	-97.30	0.00	0.00	
1,800.00	9.31	215.54	1,789.60	-114.23	-81.59	-109.97	0.00	0.00	
1,900.00	9.31	215.54	1,888.28	-127.40	-91.00	-122.64	0.00	0.00	
2,000.00	9.31	215.54	1,986.96	-140.56	-100.40	-135.32	0.00	0.00	
2,100.00	9.31	215.54	2,085.64	-153.73	-109.80	-147.99	0.00	0.00	
2,200.00	9.31	215.54	2,184.33	-166.89	-119.20	-160.66	0.00	0.00	
2,300.00	9.31	215.54	2,283.01	-180.06	-128.61	-173.33	0.00	0.00	
2,400.00	9.31	215.54	2,381.69	-193.22	-138.01	-186.01	0.00	0.00	
2,500.00	9.31	215.54	2,480.38	-206.38	-147.41	-198.68	0.00	0.00	
2,600.00	9.31	215.54	2,579.06	-219.55	-156.82	-211.35	0.00	0.00	
2,700.00	9.31	215.54	2,677.74	-232.71	-166.22	-224.03	0.00	0.00	
2,800.00	9.31	215.54	2,776.42	-245.88	-175.62	-236.70	0.00	0.00	
2,900.00	9.31	215.54	2,875.11	-259.04	-185.02	-249.37	0.00	0.00	
3,000.00	9.31	215.54	2,973.79	-272.20	-194.43	-262.04	0.00	0.00	
3,100.00	9.31	215.54	3,072.47	-285.37	-203.83	-274.72	0.00	0.00	
3,200.00	9.31	215.54	3,171.16	-298.53	-213.23	-287.39	0.00	0.00	
3,300.00	9.31	215.54	3,269.84	-311.70	-222.63	-300.06	0.00	0.00	
3,400.00	9.31	215.54	3,368.52	-324.86	-232.04	-312.74	0.00	0.00	
3,500.00	9.31	215.54	3,467.20	-338.03	-241.44	-325.41	0.00	0.00	
3,600.00	9.31	215.54	3,565.89	-351.19	-250.84	-338.08	0.00	0.00	
3,700.00	9.31	215.54	3,664.57	-364.35	-260.25	-350.75	0.00	0.00	
3,800.00	9.31	215.54	3,763.25	-377.52	-269.65	-363.43	0.00	0.00	
3,900.00	9.31	215.54	3,861.94	-390.68	-279.05	-376.10	0.00	0.00	
4,000.00	9.31	215.54	3,960.62	-403.85	-288.45	-388.77	0.00	0.00	
4,100.00	9.31	215.54	4,059.30	-417.01	-297.86	-401.45	0.00	0.00	
4,200.00	9.31	215.54	4,157.98	-430.18	-307.26	-414.12	0.00	0.00	
4,300.00	9.31	215.54	4,256.67	-443.34	-316.66	-426.79	0.00	0.00	
4,400.00	9.31	215.54	4,355.35	-456.50	-326.06	-439.46	0.00	0.00	
4,500.00	9.31	215.54	4,454.03	-469.67	-335.47	-452.14	0.00	0.00	
4,600.00	9.31	215.54	4,552.71	-482.83	-344.87	-464.81	0.00	0.00	
4,700.00	9.31	215.54	4,651.40	-496.00	-354.27	-477.48	0.00	0.00	
4,800.00	9.31	215.54	4,750.08	-509.16	-363.68	-490.16	0.00	0.00	
4,900.00	9.31	215.54	4,848.76	-522.32	-373.08	-502.83	0.00	0.00	
5,000.00	9.31	215.54	4,947.45	-535.49	-382.48	-515.50	0.00	0.00	

Cathedral Energy Services

Planning Report

Database:	USA EDM 5000 Multi Users DB	Local Co-ordinate Reference:	Well DREAM WEAVER North 3F-21H-N268 - Slo
Company:	Crestone Peak Resources	TVD Reference:	23' KB @ 4924.00usft (Original Well Elev)
Project:	DJ BASIN	MD Reference:	23' KB @ 4924.00usft (Original Well Elev)
Site:	S21-T2N-R68W	North Reference:	True
Well:	DREAM WEAVER North 3F-21H-N268	Survey Calculation Method:	Minimum Curvature
Wellbore:	OH		
Design:	PLAN #1		

Planned Survey

Measured Depth (usft)	Inclination (°)	Azimuth (°)	Vertical Depth (usft)	+N/-S (usft)	+E/-W (usft)	Vertical Section (usft)	Dogleg Rate (°/100usft)	Build Rate (°/100u)	Comments / Formations
5,100.00	9.31	215.54	5,046.13	-548.65	-391.88	-528.17	0.00	0.00	
5,200.00	9.31	215.54	5,144.81	-561.82	-401.29	-540.85	0.00	0.00	
5,300.00	9.31	215.54	5,243.49	-574.98	-410.69	-553.52	0.00	0.00	
5,400.00	9.31	215.54	5,342.18	-588.15	-420.09	-566.19	0.00	0.00	
5,500.00	9.31	215.54	5,440.86	-601.31	-429.49	-578.87	0.00	0.00	
5,600.00	9.31	215.54	5,539.54	-614.47	-438.90	-591.54	0.00	0.00	
5,700.00	9.31	215.54	5,638.23	-627.64	-448.30	-604.21	0.00	0.00	
5,800.00	9.31	215.54	5,736.91	-640.80	-457.70	-616.88	0.00	0.00	
5,900.00	9.31	215.54	5,835.59	-653.97	-467.11	-629.56	0.00	0.00	
6,000.00	9.31	215.54	5,934.27	-667.13	-476.51	-642.23	0.00	0.00	
6,100.00	9.31	215.54	6,032.96	-680.29	-485.91	-654.90	0.00	0.00	
6,200.00	9.31	215.54	6,131.64	-693.46	-495.31	-667.58	0.00	0.00	
6,300.00	9.31	215.54	6,230.32	-706.62	-504.72	-680.25	0.00	0.00	
6,400.00	9.31	215.54	6,329.00	-719.79	-514.12	-692.92	0.00	0.00	
6,500.00	9.31	215.54	6,427.69	-732.95	-523.52	-705.59	0.00	0.00	
6,600.00	9.31	215.54	6,526.37	-746.12	-532.92	-718.27	0.00	0.00	
6,700.00	9.31	215.54	6,625.05	-759.28	-542.33	-730.94	0.00	0.00	
6,800.00	9.31	215.54	6,723.74	-772.44	-551.73	-743.61	0.00	0.00	
6,812.36	9.31	215.54	6,735.93	-774.07	-552.89	-745.18	0.00	0.00	
6,900.00	5.45	264.16	6,822.91	-780.27	-561.16	-750.95	8.00	-4.41	
7,000.00	9.19	324.27	6,922.20	-774.26	-570.56	-744.48	8.00	3.74	
7,100.00	16.33	341.29	7,019.70	-754.43	-579.75	-724.21	8.00	7.14	
7,200.00	24.01	347.89	7,113.51	-721.17	-588.54	-690.54	8.00	7.68	
7,300.00	31.85	351.40	7,201.80	-675.11	-596.77	-644.13	8.00	7.83	
7,400.00	39.74	353.63	7,282.85	-617.17	-604.28	-585.88	8.00	7.89	
7,500.00	47.66	355.22	7,355.09	-548.45	-610.92	-516.92	8.00	7.92	
7,600.00	55.61	356.46	7,417.11	-470.32	-616.56	-438.60	8.00	7.94	
7,700.00	63.56	357.48	7,467.70	-384.27	-621.09	-352.43	8.00	7.95	
7,800.00	71.52	358.36	7,505.88	-291.99	-624.42	-260.11	8.00	7.96	
7,900.00	79.48	359.17	7,530.90	-195.28	-626.49	-163.41	8.00	7.96	
8,000.00	87.44	359.94	7,542.28	-96.02	-627.26	-64.23	8.00	7.96	
8,032.13	90.00	0.18	7,543.00	-63.90	-627.22	-32.16	8.00	7.96	DREAM WEAVER North 3F-21H-N268 TPZ
8,100.00	90.00	0.18	7,543.00	3.97	-627.01	35.61	0.00	0.00	
8,200.00	90.00	0.18	7,543.00	103.97	-626.70	135.47	0.00	0.00	
8,300.00	90.00	0.18	7,543.00	203.97	-626.38	235.33	0.00	0.00	
8,400.00	90.00	0.18	7,543.00	303.97	-626.07	335.18	0.00	0.00	
8,500.00	90.00	0.18	7,543.00	403.97	-625.75	435.04	0.00	0.00	
8,600.00	90.00	0.18	7,543.00	503.97	-625.44	534.90	0.00	0.00	
8,700.00	90.00	0.18	7,543.00	603.97	-625.12	634.75	0.00	0.00	
8,800.00	90.00	0.18	7,543.00	703.97	-624.81	734.61	0.00	0.00	
8,900.00	90.00	0.18	7,543.00	803.97	-624.50	834.46	0.00	0.00	
9,000.00	90.00	0.18	7,543.00	903.97	-624.18	934.32	0.00	0.00	
9,100.00	90.00	0.18	7,543.00	1,003.97	-623.87	1,034.18	0.00	0.00	
9,200.00	90.00	0.18	7,543.00	1,103.97	-623.55	1,134.03	0.00	0.00	
9,300.00	90.00	0.18	7,543.00	1,203.97	-623.24	1,233.89	0.00	0.00	
9,400.00	90.00	0.18	7,543.00	1,303.97	-622.93	1,333.74	0.00	0.00	
9,500.00	90.00	0.18	7,543.00	1,403.97	-622.61	1,433.60	0.00	0.00	
9,600.00	90.00	0.18	7,543.00	1,503.97	-622.30	1,533.46	0.00	0.00	
9,700.00	90.00	0.18	7,543.00	1,603.96	-621.98	1,633.31	0.00	0.00	
9,800.00	90.00	0.18	7,543.00	1,703.96	-621.67	1,733.17	0.00	0.00	
9,900.00	90.00	0.18	7,543.00	1,803.96	-621.35	1,833.03	0.00	0.00	
10,000.00	90.00	0.18	7,543.00	1,903.96	-621.04	1,932.88	0.00	0.00	

Cathedral Energy Services

Planning Report

Database:	USA EDM 5000 Multi Users DB	Local Co-ordinate Reference:	Well DREAM WEAVER North 3F-21H-N268 - Slo
Company:	Crestone Peak Resources	TVD Reference:	23' KB @ 4924.00usft (Original Well Elev)
Project:	DJ BASIN	MD Reference:	23' KB @ 4924.00usft (Original Well Elev)
Site:	S21-T2N-R68W	North Reference:	True
Well:	DREAM WEAVER North 3F-21H-N268	Survey Calculation Method:	Minimum Curvature
Wellbore:	OH		
Design:	PLAN #1		

Planned Survey

Measured Depth (usft)	Inclination (°)	Azimuth (°)	Vertical Depth (usft)	+N/-S (usft)	+E/-W (usft)	Vertical Section (usft)	Dogleg Rate (°/100usft)	Build Rate (°/100u)	Comments / Formations
10,100.00	90.00	0.18	7,543.00	2,003.96	-620.73	2,032.74	0.00	0.00	
10,200.00	90.00	0.18	7,543.00	2,103.96	-620.41	2,132.59	0.00	0.00	
10,300.00	90.00	0.18	7,543.00	2,203.96	-620.10	2,232.45	0.00	0.00	
10,400.00	90.00	0.18	7,543.00	2,303.96	-619.78	2,332.31	0.00	0.00	
10,500.00	90.00	0.18	7,543.00	2,403.96	-619.47	2,432.16	0.00	0.00	
10,600.00	90.00	0.18	7,543.00	2,503.96	-619.16	2,532.02	0.00	0.00	
10,700.00	90.00	0.18	7,543.00	2,603.96	-618.84	2,631.88	0.00	0.00	
10,800.00	90.00	0.18	7,543.00	2,703.96	-618.53	2,731.73	0.00	0.00	
10,900.00	90.00	0.18	7,543.00	2,803.96	-618.21	2,831.59	0.00	0.00	
11,000.00	90.00	0.18	7,543.00	2,903.96	-617.90	2,931.44	0.00	0.00	
11,100.00	90.00	0.18	7,543.00	3,003.96	-617.58	3,031.30	0.00	0.00	
11,200.00	90.00	0.18	7,543.00	3,103.96	-617.27	3,131.16	0.00	0.00	
11,300.00	90.00	0.18	7,543.00	3,203.96	-616.96	3,231.01	0.00	0.00	
11,400.00	90.00	0.18	7,543.00	3,303.96	-616.64	3,330.87	0.00	0.00	
11,500.00	90.00	0.18	7,543.00	3,403.96	-616.33	3,430.73	0.00	0.00	
11,600.00	90.00	0.18	7,543.00	3,503.96	-616.01	3,530.58	0.00	0.00	
11,700.00	90.00	0.18	7,543.00	3,603.96	-615.70	3,630.44	0.00	0.00	
11,800.00	90.00	0.18	7,543.00	3,703.95	-615.39	3,730.29	0.00	0.00	
11,900.00	90.00	0.18	7,543.00	3,803.95	-615.07	3,830.15	0.00	0.00	
12,000.00	90.00	0.18	7,543.00	3,903.95	-614.76	3,930.01	0.00	0.00	
12,100.00	90.00	0.18	7,543.00	4,003.95	-614.44	4,029.86	0.00	0.00	
12,200.00	90.00	0.18	7,543.00	4,103.95	-614.13	4,129.72	0.00	0.00	
12,300.00	90.00	0.18	7,543.00	4,203.95	-613.81	4,229.57	0.00	0.00	
12,400.00	90.00	0.18	7,543.00	4,303.95	-613.50	4,329.43	0.00	0.00	
12,500.00	90.00	0.18	7,543.00	4,403.95	-613.19	4,429.29	0.00	0.00	
12,600.00	90.00	0.18	7,543.00	4,503.95	-612.87	4,529.14	0.00	0.00	
12,700.00	90.00	0.18	7,543.00	4,603.95	-612.56	4,629.00	0.00	0.00	
12,800.00	90.00	0.18	7,543.00	4,703.95	-612.24	4,728.86	0.00	0.00	
12,900.00	90.00	0.18	7,543.00	4,803.95	-611.93	4,828.71	0.00	0.00	
13,000.00	90.00	0.18	7,543.00	4,903.95	-611.62	4,928.57	0.00	0.00	
13,100.00	90.00	0.18	7,543.00	5,003.95	-611.30	5,028.42	0.00	0.00	
13,200.00	90.00	0.18	7,543.00	5,103.95	-610.99	5,128.28	0.00	0.00	
13,300.00	90.00	0.18	7,543.00	5,203.95	-610.67	5,228.14	0.00	0.00	
13,400.00	90.00	0.18	7,543.00	5,303.95	-610.36	5,327.99	0.00	0.00	
13,500.00	90.00	0.18	7,543.00	5,403.95	-610.04	5,427.85	0.00	0.00	
13,532.13	90.00	0.18	7,543.00	5,436.08	-609.94	5,459.93	0.00	0.00	
13,600.00	90.00	358.82	7,543.00	5,503.94	-610.53	5,527.74	2.00	0.00	
13,646.13	90.00	357.90	7,543.00	5,550.05	-611.85	5,573.86	2.00	0.00	
13,700.00	90.00	357.90	7,543.00	5,603.89	-613.83	5,627.73	0.00	0.00	
13,800.00	90.00	357.90	7,543.00	5,703.82	-617.49	5,727.72	0.00	0.00	
13,900.00	90.00	357.90	7,543.00	5,803.75	-621.16	5,827.71	0.00	0.00	
14,000.00	90.00	357.90	7,543.00	5,903.68	-624.82	5,927.70	0.00	0.00	
14,100.00	90.00	357.90	7,543.00	6,003.62	-628.49	6,027.69	0.00	0.00	
14,200.00	90.00	357.90	7,543.00	6,103.55	-632.15	6,127.68	0.00	0.00	
14,300.00	90.00	357.90	7,543.00	6,203.48	-635.81	6,227.67	0.00	0.00	
14,400.00	90.00	357.90	7,543.00	6,303.42	-639.48	6,327.66	0.00	0.00	
14,500.00	90.00	357.90	7,543.00	6,403.35	-643.14	6,427.65	0.00	0.00	
14,600.00	90.00	357.90	7,543.00	6,503.28	-646.81	6,527.64	0.00	0.00	
14,700.00	90.00	357.90	7,543.00	6,603.21	-650.47	6,627.63	0.00	0.00	
14,800.00	90.00	357.90	7,543.00	6,703.15	-654.14	6,727.62	0.00	0.00	
14,900.00	90.00	357.90	7,543.00	6,803.08	-657.80	6,827.61	0.00	0.00	
15,000.00	90.00	357.90	7,543.00	6,903.01	-661.46	6,927.60	0.00	0.00	

Cathedral Energy Services

Planning Report

Database:	USA EDM 5000 Multi Users DB	Local Co-ordinate Reference:	Well DREAM WEAVER North 3F-21H-N268 - Slo
Company:	Crestone Peak Resources	TVD Reference:	23' KB @ 4924.00usft (Original Well Elev)
Project:	DJ BASIN	MD Reference:	23' KB @ 4924.00usft (Original Well Elev)
Site:	S21-T2N-R68W	North Reference:	True
Well:	DREAM WEAVER North 3F-21H-N268	Survey Calculation Method:	Minimum Curvature
Wellbore:	OH		
Design:	PLAN #1		

Planned Survey

Measured Depth (usft)	Inclination (°)	Azimuth (°)	Vertical Depth (usft)	+N/-S (usft)	+E/-W (usft)	Vertical Section (usft)	Dogleg Rate (°/100usft)	Build Rate (°/100u)	Comments / Formations
15,046.13	90.00	357.90	7,543.00	6,949.11	-663.15	6,973.73	0.00	0.00	
15,100.00	90.00	358.98	7,543.00	7,002.96	-664.62	7,027.58	2.00	0.00	
15,200.00	90.00	0.98	7,543.00	7,102.96	-664.66	7,127.45	2.00	0.00	
15,228.43	90.00	1.55	7,543.00	7,131.38	-664.04	7,155.81	2.00	0.00	
15,300.00	90.00	1.55	7,543.00	7,202.92	-662.10	7,227.16	0.00	0.00	
15,400.00	90.00	1.55	7,543.00	7,302.89	-659.41	7,326.86	0.00	0.00	
15,500.00	90.00	1.55	7,543.00	7,402.85	-656.71	7,426.56	0.00	0.00	
15,600.00	90.00	1.55	7,543.00	7,502.81	-654.01	7,526.26	0.00	0.00	
15,700.00	90.00	1.55	7,543.00	7,602.78	-651.31	7,625.96	0.00	0.00	
15,800.00	90.00	1.55	7,543.00	7,702.74	-648.61	7,725.66	0.00	0.00	
15,900.00	90.00	1.55	7,543.00	7,802.70	-645.92	7,825.36	0.00	0.00	
16,000.00	90.00	1.55	7,543.00	7,902.67	-643.22	7,925.06	0.00	0.00	
16,100.00	90.00	1.55	7,543.00	8,002.63	-640.52	8,024.76	0.00	0.00	
16,200.00	90.00	1.55	7,543.00	8,102.60	-637.82	8,124.46	0.00	0.00	
16,300.00	90.00	1.55	7,543.00	8,202.56	-635.12	8,224.16	0.00	0.00	
16,400.00	90.00	1.55	7,543.00	8,302.52	-632.43	8,323.86	0.00	0.00	
16,500.00	90.00	1.55	7,543.00	8,402.49	-629.73	8,423.56	0.00	0.00	
16,600.00	90.00	1.55	7,543.00	8,502.45	-627.03	8,523.26	0.00	0.00	
16,700.00	90.00	1.55	7,543.00	8,602.41	-624.33	8,622.96	0.00	0.00	
16,800.00	90.00	1.55	7,543.00	8,702.38	-621.63	8,722.66	0.00	0.00	
16,900.00	90.00	1.55	7,543.00	8,802.34	-618.93	8,822.36	0.00	0.00	
17,000.00	90.00	1.55	7,543.00	8,902.30	-616.24	8,922.06	0.00	0.00	
17,100.00	90.00	1.55	7,543.00	9,002.27	-613.54	9,021.76	0.00	0.00	
17,200.00	90.00	1.55	7,543.00	9,102.23	-610.84	9,121.46	0.00	0.00	
17,300.00	90.00	1.55	7,543.00	9,202.20	-608.14	9,221.16	0.00	0.00	
17,400.00	90.00	1.55	7,543.00	9,302.16	-605.44	9,320.86	0.00	0.00	
17,500.00	90.00	1.55	7,543.00	9,402.12	-602.75	9,420.56	0.00	0.00	
17,600.00	90.00	1.55	7,543.00	9,502.09	-600.05	9,520.26	0.00	0.00	
17,700.00	90.00	1.55	7,543.00	9,602.05	-597.35	9,619.96	0.00	0.00	
17,800.00	90.00	1.55	7,543.00	9,702.01	-594.65	9,719.66	0.00	0.00	
17,900.00	90.00	1.55	7,543.00	9,801.98	-591.95	9,819.36	0.00	0.00	
18,000.00	90.00	1.55	7,543.00	9,901.94	-589.25	9,919.06	0.00	0.00	
18,100.00	90.00	1.55	7,543.00	10,001.90	-586.56	10,018.76	0.00	0.00	
18,200.00	90.00	1.55	7,543.00	10,101.87	-583.86	10,118.46	0.00	0.00	
18,300.00	90.00	1.55	7,543.00	10,201.83	-581.16	10,218.16	0.00	0.00	
18,400.00	90.00	1.55	7,543.00	10,301.79	-578.46	10,317.86	0.00	0.00	
18,500.00	90.00	1.55	7,543.00	10,401.76	-575.76	10,417.56	0.00	0.00	
18,600.00	90.00	1.55	7,543.00	10,501.72	-573.07	10,517.26	0.00	0.00	
18,700.00	90.00	1.55	7,543.00	10,601.69	-570.37	10,616.96	0.00	0.00	
18,800.00	90.00	1.55	7,543.00	10,701.65	-567.67	10,716.66	0.00	0.00	
18,900.00	90.00	1.55	7,543.00	10,801.61	-564.97	10,816.36	0.00	0.00	
18,983.04	90.00	1.55	7,543.00	10,884.62	-562.73	10,899.15	0.00	0.00	
19,000.00	90.00	1.21	7,543.00	10,901.58	-562.32	10,916.06	2.00	0.00	
19,100.00	90.00	359.21	7,543.00	11,001.57	-561.96	11,015.91	2.00	0.00	
19,185.35	90.00	357.50	7,543.00	11,086.88	-564.41	11,101.24	2.00	0.00	
19,200.00	90.00	357.50	7,543.00	11,101.52	-565.05	11,115.89	0.00	0.00	
19,300.00	90.00	357.50	7,543.00	11,201.42	-569.42	11,215.89	0.00	0.00	
19,400.00	90.00	357.50	7,543.00	11,301.33	-573.78	11,315.88	0.00	0.00	
19,500.00	90.00	357.50	7,543.00	11,401.23	-578.14	11,415.88	0.00	0.00	
19,600.00	90.00	357.50	7,543.00	11,501.14	-582.50	11,515.88	0.00	0.00	
19,700.00	90.00	357.50	7,543.00	11,601.04	-586.86	11,615.88	0.00	0.00	
19,785.35	90.00	357.50	7,543.00	11,686.31	-590.59	11,701.22	0.00	0.00	DREAM WEAVER North 3F-21H-N268 BHL

Cathedral Energy Services

Planning Report

Database:	USA EDM 5000 Multi Users DB	Local Co-ordinate Reference:	Well DREAM WEAVER North 3F-21H-N268 - Slo
Company:	Crestone Peak Resources	TVD Reference:	23' KB @ 4924.00usft (Original Well Elev)
Project:	DJ BASIN	MD Reference:	23' KB @ 4924.00usft (Original Well Elev)
Site:	S21-T2N-R68W	North Reference:	True
Well:	DREAM WEAVER North 3F-21H-N268	Survey Calculation Method:	Minimum Curvature
Wellbore:	OH		
Design:	PLAN #1		

Targets									
Target Name	Dip Angle	Dip Dir.	TVD	+N/-S	+E/-W	Northing	Easting	Latitude	Longitude
- hit/miss target	(°)	(°)	(usft)	(usft)	(usft)	(usft)	(usft)		
- Shape									
DREAM WEAVER North - plan hits target center - Point	0.00	0.00	7,543.00	11,686.31	-590.59	1,298,592.02	3,136,030.78	40.152005	-105.013355
DREAM WEAVER North - plan hits target center - Point	0.00	0.00	7,543.00	-63.90	-627.22	1,286,841.79	3,136,058.91	40.119749	-105.013485