



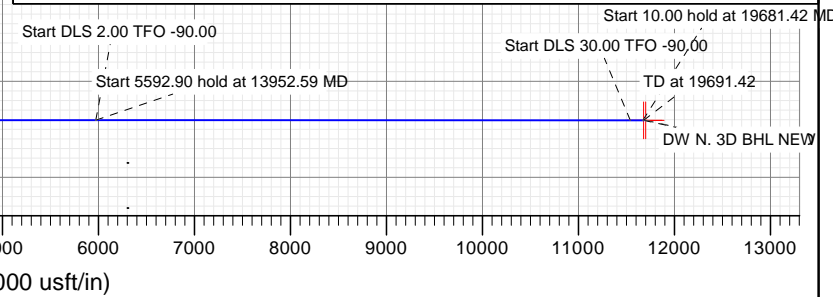
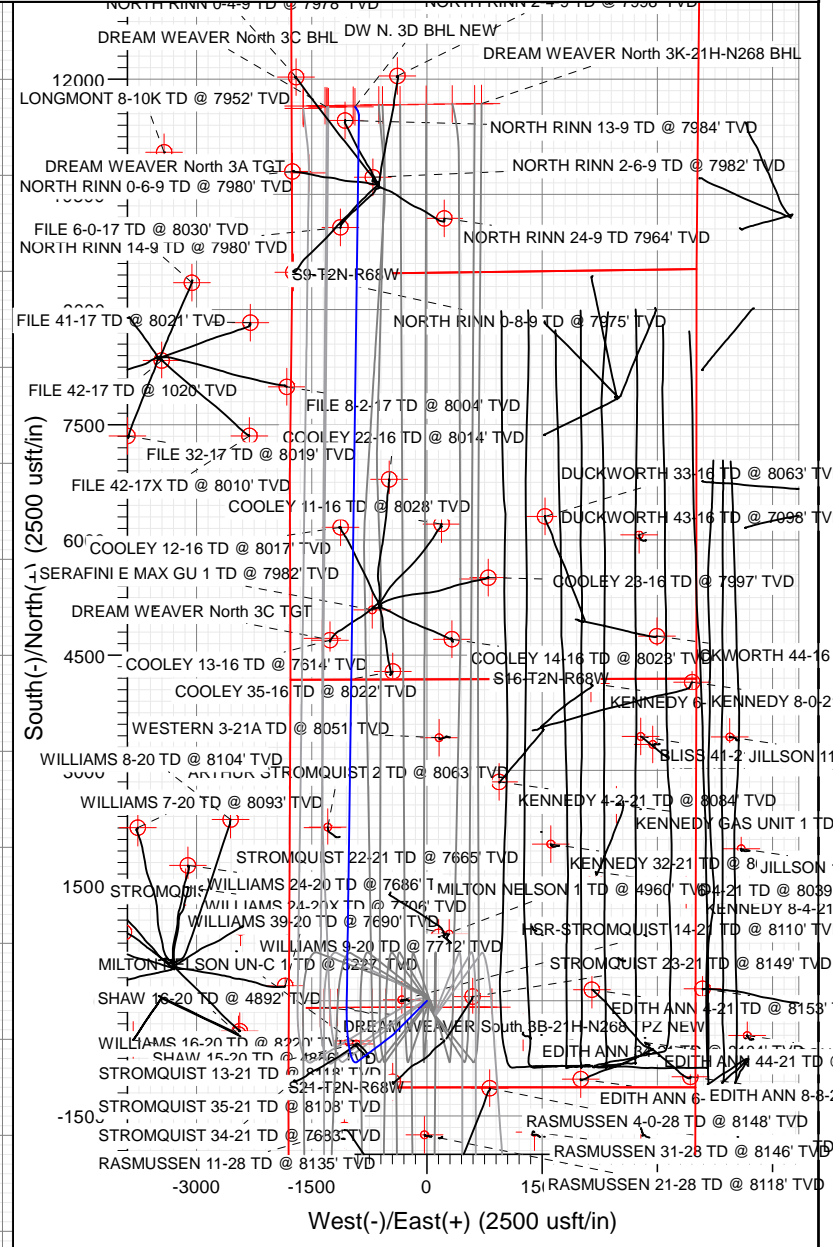
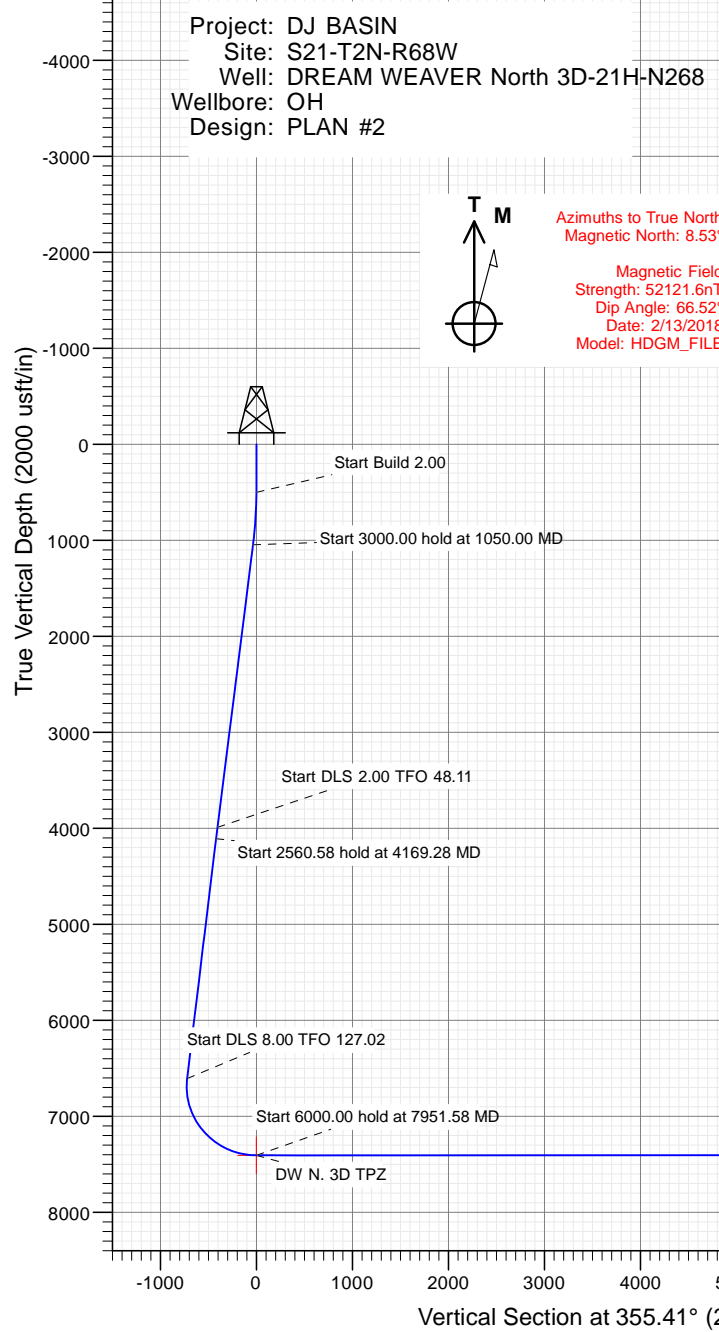
SECTION DETAILS										
Sec	MD	Inc	Azi	TVD	+N/-S	+E/-W	Dleg	TFace	VSec	Target
1	0.00	0.00	0.00	0.00	0.00	0.00	0.00	0.00	0.00	
2	500.00	0.00	0.00	500.00	0.00	0.00	0.00	0.00	0.00	
3	1050.00	11.00	225.00	1046.63	-37.22	-37.22	2.00	225.00	-34.12	
4	4050.00	11.00	225.00	3991.51	-441.99	-441.99	0.00	0.00	-405.17	
5	4169.28	12.72	233.09	4108.25	-457.92	-460.53	2.00	48.11	-419.56	
6	6729.86	12.72	233.09	6606.03	-796.39	-911.21	0.00	0.00	-720.86	
7	7951.58	90.00	0.80	7406.00	-84.79	-1044.11	8.00	127.02	-0.90	DW N. 3D TPZ
8	13951.58	90.00	0.80	7406.00	5914.63	-960.33	0.00	0.00	5972.54	
9	13952.59	90.00	0.78	7406.00	5915.64	-960.32	2.00	-90.00	5973.54	
10	19545.49	90.00	0.78	7406.00	11508.02	-884.20	0.00	0.00	11541.86	
11	19681.42	90.00	320.00	7406.00	11633.38	-928.86	30.00	-90.00	11670.40	
12	19691.42	90.00	320.00	7406.00	11641.04	-935.29	0.00	0.00	11678.55	DW N. 3D BHL NEW

PLAN #2  
 DREAM WEAVER North 3D-21H-N268  
 23 KS @ 4924.0usft (Original Well Elev)  
 Ground Level @ 4901.00  
 North American Datum 1983  
 Well DREAM WEAVER North 3D-21H-N268 - Slot DREAM WEAVER North 3D-21H-N268 SHL, True North

Type	Target	Asimuth	Origin	N/S	E/W	From TVD
TD	No Target (Freehand)	355.41	Slot	0.00	0.00	0.00

Name	TVD	+N/-S	+E/-W	Latitude	Longitude
DW N. 3D BHL NEW	7406.00	11641.04	-935.29	40.151937	-105.014634
DW N. 3D BHL OLD	7406.00	11661.04	-957.52	40.151992	-105.014714
DW N. 3D TPZ	7406.00	-84.79	-1044.11	40.119748	-105.015922



WELL DETAILS: DREAM WEAVER North 3D-21H-N268

4901.00

+N/-S	+E/-W	Northing	Easting	Latitude	Longitude
0.00	0.00	1286929.62	3136672.70	40.119981	-105.011289

# Cathedral Energy Services

## Planning Report

<b>Database:</b> USA EDM 5000 Multi Users DB	<b>Local Co-ordinate Reference:</b> Well DREAM WEAVER North 3D-21H-N268 - SI
<b>Company:</b> Crestone Peak Resources	<b>TVD Reference:</b> 23' KB @ 4924.00usft (Original Well Elev)
<b>Project:</b> DJ BASIN	<b>MD Reference:</b> 23' KB @ 4924.00usft (Original Well Elev)
<b>Site:</b> S21-T2N-R68W	<b>North Reference:</b> True
<b>Well:</b> DREAM WEAVER North 3D-21H-N268	<b>Survey Calculation Method:</b> Minimum Curvature
<b>Wellbore:</b> OH	
<b>Design:</b> PLAN #2	

<b>Project</b> DJ BASIN		
<b>Map System:</b> US State Plane 1983	<b>System Datum:</b> Mean Sea Level	
<b>Geo Datum:</b> North American Datum 1983		
<b>Map Zone:</b> Colorado Northern Zone		

<b>Site</b> S21-T2N-R68W					
<b>Site Position:</b>		<b>Northing:</b>	1,286,960.17 usft	<b>Latitude:</b>	40.120065
<b>From:</b>	Lat/Long	<b>Easting:</b>	3,136,653.11 usft	<b>Longitude:</b>	-105.011358
<b>Position Uncertainty:</b>	0.00 usft	<b>Slot Radius:</b>	13-3/16"	<b>Grid Convergence:</b>	0.32 °

<b>Well</b> DREAM WEAVER North 3D-21H-N268 - Slot DREAM WEAVER North 3D-21H-N268 SHL					
<b>Well Position</b>	<b>+N/-S</b>	0.00 usft	<b>Northing:</b>	1,286,929.62 usft	<b>Latitude:</b> 40.119981
	<b>+E/-W</b>	0.00 usft	<b>Easting:</b>	3,136,672.70 usft	<b>Longitude:</b> -105.011289
<b>Position Uncertainty</b>		0.00 usft	<b>Wellhead Elevation:</b>	usft	<b>Ground Level:</b> 4,901.00 usft

<b>Wellbore</b> OH					
<b>Magnetics</b>	<b>Model Name</b>	<b>Sample Date</b>	<b>Declination</b>	<b>Dip Angle</b>	<b>Field Strength</b>
			(°)	(°)	(nT)
	HDGM_FILE	2/13/2018	8.53	66.52	52,121.60000000

<b>Design</b> PLAN #2				
<b>Audit Notes:</b>				
<b>Version:</b>	<b>Phase:</b>	PLAN	<b>Tie On Depth:</b>	0.00
<b>Vertical Section:</b>	<b>Depth From (TVD)</b>	<b>+N/-S</b>	<b>+E/-W</b>	<b>Direction</b>
	(usft)	(usft)	(usft)	(°)
	0.00	0.00	0.00	355.41

<b>Plan Sections</b>										
Measured Depth (usft)	Inclination (°)	Azimuth (°)	Vertical Depth (usft)	+N/-S (usft)	+E/-W (usft)	Dogleg Rate (°/100usft)	Build Rate (°/100usft)	Turn Rate (°/100usft)	TFO (°)	Target
0.00	0.00	0.00	0.00	0.00	0.00	0.00	0.00	0.00	0.00	
500.00	0.00	0.00	500.00	0.00	0.00	0.00	0.00	0.00	0.00	
1,050.00	11.00	225.00	1,046.63	-37.22	-37.22	2.00	2.00	0.00	225.00	
4,050.00	11.00	225.00	3,991.51	-441.99	-441.99	0.00	0.00	0.00	0.00	
4,169.28	12.72	233.09	4,108.25	-457.92	-460.53	2.00	1.44	6.78	48.11	
6,729.86	12.72	233.09	6,606.03	-796.39	-911.21	0.00	0.00	0.00	0.00	
7,951.58	90.00	0.80	7,406.00	-84.79	-1,044.11	8.00	6.33	10.45	127.02	DW N. 3D TPZ
13,951.58	90.00	0.80	7,406.00	5,914.63	-960.33	0.00	0.00	0.00	0.00	
13,952.59	90.00	0.78	7,406.00	5,915.64	-960.32	2.00	0.00	-2.00	-90.00	
19,545.49	90.00	0.78	7,406.00	11,508.02	-884.20	0.00	0.00	0.00	0.00	
19,681.42	90.00	320.00	7,406.00	11,633.38	-928.86	30.00	0.00	-30.00	-90.00	
19,691.42	90.00	320.00	7,406.00	11,641.04	-935.29	0.00	0.00	0.00	0.00	DW N. 3D BHL NEW

# Cathedral Energy Services

## Planning Report

<b>Database:</b>	USA EDM 5000 Multi Users DB	<b>Local Co-ordinate Reference:</b>	Well DREAM WEAVER North 3D-21H-N268 - SI
<b>Company:</b>	Crestone Peak Resources	<b>TVD Reference:</b>	23' KB @ 4924.00usft (Original Well Elev)
<b>Project:</b>	DJ BASIN	<b>MD Reference:</b>	23' KB @ 4924.00usft (Original Well Elev)
<b>Site:</b>	S21-T2N-R68W	<b>North Reference:</b>	True
<b>Well:</b>	DREAM WEAVER North 3D-21H-N268	<b>Survey Calculation Method:</b>	Minimum Curvature
<b>Wellbore:</b>	OH		
<b>Design:</b>	PLAN #2		

### Planned Survey

Measured Depth (usft)	Inclination (°)	Azimuth (°)	Vertical Depth (usft)	+N/-S (usft)	+E/-W (usft)	Vertical Section (usft)	Dogleg Rate (°/100usft)	Build Rate (°/100u)	Comments / Formations
0.00	0.00	0.00	0.00	0.00	0.00	0.00	0.00	0.00	
100.00	0.00	0.00	100.00	0.00	0.00	0.00	0.00	0.00	
200.00	0.00	0.00	200.00	0.00	0.00	0.00	0.00	0.00	
300.00	0.00	0.00	300.00	0.00	0.00	0.00	0.00	0.00	
400.00	0.00	0.00	400.00	0.00	0.00	0.00	0.00	0.00	
500.00	0.00	0.00	500.00	0.00	0.00	0.00	0.00	0.00	
600.00	2.00	225.00	599.98	-1.23	-1.23	-1.13	2.00	2.00	
700.00	4.00	225.00	699.84	-4.93	-4.93	-4.52	2.00	2.00	
800.00	6.00	225.00	799.45	-11.10	-11.10	-10.17	2.00	2.00	
900.00	8.00	225.00	898.70	-19.71	-19.71	-18.07	2.00	2.00	
1,000.00	10.00	225.00	997.47	-30.78	-30.78	-28.21	2.00	2.00	
1,050.00	11.00	225.00	1,046.63	-37.22	-37.22	-34.12	2.00	2.00	
1,100.00	11.00	225.00	1,095.71	-43.96	-43.96	-40.30	0.00	0.00	
1,200.00	11.00	225.00	1,193.87	-57.46	-57.46	-52.67	0.00	0.00	
1,300.00	11.00	225.00	1,292.03	-70.95	-70.95	-65.04	0.00	0.00	
1,400.00	11.00	225.00	1,390.20	-84.44	-84.44	-77.41	0.00	0.00	
1,500.00	11.00	225.00	1,488.36	-97.93	-97.93	-89.78	0.00	0.00	
1,600.00	11.00	225.00	1,586.52	-111.43	-111.43	-102.14	0.00	0.00	
1,700.00	11.00	225.00	1,684.69	-124.92	-124.92	-114.51	0.00	0.00	
1,800.00	11.00	225.00	1,782.85	-138.41	-138.41	-126.88	0.00	0.00	
1,900.00	11.00	225.00	1,881.01	-151.90	-151.90	-139.25	0.00	0.00	
2,000.00	11.00	225.00	1,979.17	-165.39	-165.39	-151.62	0.00	0.00	
2,100.00	11.00	225.00	2,077.34	-178.89	-178.89	-163.99	0.00	0.00	
2,200.00	11.00	225.00	2,175.50	-192.38	-192.38	-176.35	0.00	0.00	
2,300.00	11.00	225.00	2,273.66	-205.87	-205.87	-188.72	0.00	0.00	
2,400.00	11.00	225.00	2,371.82	-219.36	-219.36	-201.09	0.00	0.00	
2,500.00	11.00	225.00	2,469.99	-232.86	-232.86	-213.46	0.00	0.00	
2,600.00	11.00	225.00	2,568.15	-246.35	-246.35	-225.83	0.00	0.00	
2,700.00	11.00	225.00	2,666.31	-259.84	-259.84	-238.20	0.00	0.00	
2,800.00	11.00	225.00	2,764.48	-273.33	-273.33	-250.56	0.00	0.00	
2,900.00	11.00	225.00	2,862.64	-286.82	-286.82	-262.93	0.00	0.00	
3,000.00	11.00	225.00	2,960.80	-300.32	-300.32	-275.30	0.00	0.00	
3,100.00	11.00	225.00	3,058.96	-313.81	-313.81	-287.67	0.00	0.00	
3,200.00	11.00	225.00	3,157.13	-327.30	-327.30	-300.04	0.00	0.00	
3,300.00	11.00	225.00	3,255.29	-340.79	-340.79	-312.41	0.00	0.00	
3,400.00	11.00	225.00	3,353.45	-354.29	-354.29	-324.77	0.00	0.00	
3,500.00	11.00	225.00	3,451.61	-367.78	-367.78	-337.14	0.00	0.00	
3,600.00	11.00	225.00	3,549.78	-381.27	-381.27	-349.51	0.00	0.00	
3,700.00	11.00	225.00	3,647.94	-394.76	-394.76	-361.88	0.00	0.00	
3,800.00	11.00	225.00	3,746.10	-408.25	-408.25	-374.25	0.00	0.00	
3,900.00	11.00	225.00	3,844.26	-421.75	-421.75	-386.62	0.00	0.00	
4,000.00	11.00	225.00	3,942.43	-435.24	-435.24	-398.98	0.00	0.00	
4,050.00	11.00	225.00	3,991.51	-441.99	-441.99	-405.17	0.00	0.00	
4,100.00	11.69	228.68	4,040.53	-448.70	-449.16	-411.29	2.00	1.38	
4,169.28	12.72	233.09	4,108.25	-457.92	-460.53	-419.56	2.00	1.48	
4,200.00	12.72	233.09	4,138.21	-461.98	-465.94	-423.18	0.00	0.00	
4,300.00	12.72	233.09	4,235.76	-475.20	-483.54	-434.95	0.00	0.00	
4,400.00	12.72	233.09	4,333.31	-488.42	-501.14	-446.71	0.00	0.00	
4,500.00	12.72	233.09	4,430.86	-501.63	-518.74	-458.48	0.00	0.00	
4,600.00	12.72	233.09	4,528.40	-514.85	-536.34	-470.25	0.00	0.00	
4,700.00	12.72	233.09	4,625.95	-528.07	-553.94	-482.01	0.00	0.00	
4,800.00	12.72	233.09	4,723.50	-541.29	-571.54	-493.78	0.00	0.00	

# Cathedral Energy Services

## Planning Report

<b>Database:</b>	USA EDM 5000 Multi Users DB	<b>Local Co-ordinate Reference:</b>	Well DREAM WEAVER North 3D-21H-N268 - SI
<b>Company:</b>	Crestone Peak Resources	<b>TVD Reference:</b>	23' KB @ 4924.00usft (Original Well Elev)
<b>Project:</b>	DJ BASIN	<b>MD Reference:</b>	23' KB @ 4924.00usft (Original Well Elev)
<b>Site:</b>	S21-T2N-R68W	<b>North Reference:</b>	True
<b>Well:</b>	DREAM WEAVER North 3D-21H-N268	<b>Survey Calculation Method:</b>	Minimum Curvature
<b>Wellbore:</b>	OH		
<b>Design:</b>	PLAN #2		

### Planned Survey

Measured Depth (usft)	Inclination (°)	Azimuth (°)	Vertical Depth (usft)	+N/-S (usft)	+E/-W (usft)	Vertical Section (usft)	Dogleg Rate (°/100usft)	Build Rate (°/100u)	Comments / Formations
4,900.00	12.72	233.09	4,821.05	-554.51	-589.14	-505.54	0.00	0.00	
5,000.00	12.72	233.09	4,918.59	-567.73	-606.74	-517.31	0.00	0.00	
5,100.00	12.72	233.09	5,016.14	-580.95	-624.35	-529.08	0.00	0.00	
5,200.00	12.72	233.09	5,113.69	-594.16	-641.95	-540.84	0.00	0.00	
5,300.00	12.72	233.09	5,211.23	-607.38	-659.55	-552.61	0.00	0.00	
5,400.00	12.72	233.09	5,308.78	-620.60	-677.15	-564.38	0.00	0.00	
5,500.00	12.72	233.09	5,406.33	-633.82	-694.75	-576.14	0.00	0.00	
5,600.00	12.72	233.09	5,503.88	-647.04	-712.35	-587.91	0.00	0.00	
5,700.00	12.72	233.09	5,601.42	-660.26	-729.95	-599.68	0.00	0.00	
5,800.00	12.72	233.09	5,698.97	-673.48	-747.55	-611.44	0.00	0.00	
5,900.00	12.72	233.09	5,796.52	-686.69	-765.15	-623.21	0.00	0.00	
6,000.00	12.72	233.09	5,894.07	-699.91	-782.75	-634.98	0.00	0.00	
6,100.00	12.72	233.09	5,991.61	-713.13	-800.35	-646.74	0.00	0.00	
6,200.00	12.72	233.09	6,089.16	-726.35	-817.95	-658.51	0.00	0.00	
6,300.00	12.72	233.09	6,186.71	-739.57	-835.56	-670.28	0.00	0.00	
6,400.00	12.72	233.09	6,284.26	-752.79	-853.16	-682.04	0.00	0.00	
6,500.00	12.72	233.09	6,381.80	-766.01	-870.76	-693.81	0.00	0.00	
6,600.00	12.72	233.09	6,479.35	-779.22	-888.36	-705.58	0.00	0.00	
6,700.00	12.72	233.09	6,576.90	-792.44	-905.96	-717.34	0.00	0.00	
6,729.86	12.72	233.09	6,606.03	-796.39	-911.21	-720.86	0.00	0.00	
6,800.00	10.34	258.87	6,674.79	-802.25	-923.57	-725.70	8.00	-3.39	
6,900.00	11.69	301.14	6,773.10	-798.73	-941.08	-720.80	8.00	1.35	
7,000.00	17.11	325.37	6,870.01	-781.36	-958.14	-702.12	8.00	5.43	
7,100.00	24.00	337.16	6,963.62	-750.46	-974.42	-670.01	8.00	6.88	
7,200.00	31.39	343.79	7,052.13	-706.64	-989.61	-625.12	8.00	7.39	
7,300.00	39.01	348.07	7,133.80	-650.75	-1,003.41	-568.30	8.00	7.61	
7,400.00	46.73	351.13	7,207.04	-583.88	-1,015.55	-500.68	8.00	7.73	
7,500.00	54.52	353.49	7,270.43	-507.33	-1,025.80	-423.55	8.00	7.79	
7,600.00	62.35	355.43	7,322.74	-422.59	-1,033.96	-338.43	8.00	7.83	
7,700.00	70.20	357.11	7,362.95	-331.31	-1,039.86	-246.97	8.00	7.85	
7,800.00	78.07	358.64	7,390.27	-235.26	-1,043.40	-150.95	8.00	7.87	
7,900.00	85.94	0.07	7,404.17	-136.32	-1,044.50	-52.24	8.00	7.87	
7,951.58	90.00	0.80	7,406.00	-84.79	-1,044.11	-0.90	8.00	7.88	
8,000.00	90.00	0.80	7,406.00	-36.37	-1,043.43	47.31	0.00	0.00	
8,100.00	90.00	0.80	7,406.00	63.62	-1,042.03	146.87	0.00	0.00	
8,200.00	90.00	0.80	7,406.00	163.61	-1,040.64	246.42	0.00	0.00	
8,300.00	90.00	0.80	7,406.00	263.60	-1,039.24	345.98	0.00	0.00	
8,400.00	90.00	0.80	7,406.00	363.59	-1,037.85	445.54	0.00	0.00	
8,500.00	90.00	0.80	7,406.00	463.58	-1,036.45	545.09	0.00	0.00	
8,600.00	90.00	0.80	7,406.00	563.57	-1,035.05	644.65	0.00	0.00	
8,700.00	90.00	0.80	7,406.00	663.56	-1,033.66	744.21	0.00	0.00	
8,800.00	90.00	0.80	7,406.00	763.55	-1,032.26	843.77	0.00	0.00	
8,900.00	90.00	0.80	7,406.00	863.54	-1,030.86	943.32	0.00	0.00	
9,000.00	90.00	0.80	7,406.00	963.53	-1,029.47	1,042.88	0.00	0.00	
9,100.00	90.00	0.80	7,406.00	1,063.52	-1,028.07	1,142.44	0.00	0.00	
9,200.00	90.00	0.80	7,406.00	1,163.51	-1,026.68	1,242.00	0.00	0.00	
9,300.00	90.00	0.80	7,406.00	1,263.50	-1,025.28	1,341.55	0.00	0.00	
9,400.00	90.00	0.80	7,406.00	1,363.49	-1,023.88	1,441.11	0.00	0.00	
9,500.00	90.00	0.80	7,406.00	1,463.48	-1,022.49	1,540.67	0.00	0.00	
9,600.00	90.00	0.80	7,406.00	1,563.47	-1,021.09	1,640.22	0.00	0.00	
9,700.00	90.00	0.80	7,406.00	1,663.46	-1,019.69	1,739.78	0.00	0.00	
9,800.00	90.00	0.80	7,406.00	1,763.45	-1,018.30	1,839.34	0.00	0.00	

# Cathedral Energy Services

## Planning Report

<b>Database:</b>	USA EDM 5000 Multi Users DB	<b>Local Co-ordinate Reference:</b>	Well DREAM WEAVER North 3D-21H-N268 - SI
<b>Company:</b>	Crestone Peak Resources	<b>TVD Reference:</b>	23' KB @ 4924.00usft (Original Well Elev)
<b>Project:</b>	DJ BASIN	<b>MD Reference:</b>	23' KB @ 4924.00usft (Original Well Elev)
<b>Site:</b>	S21-T2N-R68W	<b>North Reference:</b>	True
<b>Well:</b>	DREAM WEAVER North 3D-21H-N268	<b>Survey Calculation Method:</b>	Minimum Curvature
<b>Wellbore:</b>	OH		
<b>Design:</b>	PLAN #2		

### Planned Survey

Measured Depth (usft)	Inclination (°)	Azimuth (°)	Vertical Depth (usft)	+N/-S (usft)	+E/-W (usft)	Vertical Section (usft)	Dogleg Rate (°/100usft)	Build Rate (°/100u)	Comments / Formations
9,900.00	90.00	0.80	7,406.00	1,863.44	-1,016.90	1,938.90	0.00	0.00	
10,000.00	90.00	0.80	7,406.00	1,963.43	-1,015.51	2,038.45	0.00	0.00	
10,100.00	90.00	0.80	7,406.00	2,063.42	-1,014.11	2,138.01	0.00	0.00	
10,200.00	90.00	0.80	7,406.00	2,163.41	-1,012.71	2,237.57	0.00	0.00	
10,300.00	90.00	0.80	7,406.00	2,263.40	-1,011.32	2,337.13	0.00	0.00	
10,400.00	90.00	0.80	7,406.00	2,363.39	-1,009.92	2,436.68	0.00	0.00	
10,500.00	90.00	0.80	7,406.00	2,463.38	-1,008.52	2,536.24	0.00	0.00	
10,600.00	90.00	0.80	7,406.00	2,563.37	-1,007.13	2,635.80	0.00	0.00	
10,700.00	90.00	0.80	7,406.00	2,663.36	-1,005.73	2,735.35	0.00	0.00	
10,800.00	90.00	0.80	7,406.00	2,763.35	-1,004.34	2,834.91	0.00	0.00	
10,900.00	90.00	0.80	7,406.00	2,863.34	-1,002.94	2,934.47	0.00	0.00	
11,000.00	90.00	0.80	7,406.00	2,963.33	-1,001.54	3,034.03	0.00	0.00	
11,100.00	90.00	0.80	7,406.00	3,063.32	-1,000.15	3,133.58	0.00	0.00	
11,200.00	90.00	0.80	7,406.00	3,163.32	-998.75	3,233.14	0.00	0.00	
11,300.00	90.00	0.80	7,406.00	3,263.31	-997.36	3,332.70	0.00	0.00	
11,400.00	90.00	0.80	7,406.00	3,363.30	-995.96	3,432.26	0.00	0.00	
11,500.00	90.00	0.80	7,406.00	3,463.29	-994.56	3,531.81	0.00	0.00	
11,600.00	90.00	0.80	7,406.00	3,563.28	-993.17	3,631.37	0.00	0.00	
11,700.00	90.00	0.80	7,406.00	3,663.27	-991.77	3,730.93	0.00	0.00	
11,800.00	90.00	0.80	7,406.00	3,763.26	-990.37	3,830.48	0.00	0.00	
11,900.00	90.00	0.80	7,406.00	3,863.25	-988.98	3,930.04	0.00	0.00	
12,000.00	90.00	0.80	7,406.00	3,963.24	-987.58	4,029.60	0.00	0.00	
12,100.00	90.00	0.80	7,406.00	4,063.23	-986.19	4,129.16	0.00	0.00	
12,200.00	90.00	0.80	7,406.00	4,163.22	-984.79	4,228.71	0.00	0.00	
12,300.00	90.00	0.80	7,406.00	4,263.21	-983.39	4,328.27	0.00	0.00	
12,400.00	90.00	0.80	7,406.00	4,363.20	-982.00	4,427.83	0.00	0.00	
12,500.00	90.00	0.80	7,406.00	4,463.19	-980.60	4,527.39	0.00	0.00	
12,600.00	90.00	0.80	7,406.00	4,563.18	-979.20	4,626.94	0.00	0.00	
12,700.00	90.00	0.80	7,406.00	4,663.17	-977.81	4,726.50	0.00	0.00	
12,800.00	90.00	0.80	7,406.00	4,763.16	-976.41	4,826.06	0.00	0.00	
12,900.00	90.00	0.80	7,406.00	4,863.15	-975.02	4,925.61	0.00	0.00	
13,000.00	90.00	0.80	7,406.00	4,963.14	-973.62	5,025.17	0.00	0.00	
13,100.00	90.00	0.80	7,406.00	5,063.13	-972.22	5,124.73	0.00	0.00	
13,200.00	90.00	0.80	7,406.00	5,163.12	-970.83	5,224.29	0.00	0.00	
13,300.00	90.00	0.80	7,406.00	5,263.11	-969.43	5,323.84	0.00	0.00	
13,400.00	90.00	0.80	7,406.00	5,363.10	-968.03	5,423.40	0.00	0.00	
13,500.00	90.00	0.80	7,406.00	5,463.09	-966.64	5,522.96	0.00	0.00	
13,600.00	90.00	0.80	7,406.00	5,563.08	-965.24	5,622.51	0.00	0.00	
13,700.00	90.00	0.80	7,406.00	5,663.07	-963.85	5,722.07	0.00	0.00	
13,800.00	90.00	0.80	7,406.00	5,763.06	-962.45	5,821.63	0.00	0.00	
13,900.00	90.00	0.80	7,406.00	5,863.05	-961.05	5,921.19	0.00	0.00	
13,951.58	90.00	0.80	7,406.00	5,914.63	-960.33	5,972.54	0.00	0.00	
13,952.59	90.00	0.78	7,406.00	5,915.64	-960.32	5,973.54	2.00	0.00	
14,000.00	90.00	0.78	7,406.00	5,963.04	-959.67	6,020.75	0.00	0.00	
14,100.00	90.00	0.78	7,406.00	6,063.03	-958.31	6,120.31	0.00	0.00	
14,200.00	90.00	0.78	7,406.00	6,163.02	-956.95	6,219.87	0.00	0.00	
14,300.00	90.00	0.78	7,406.00	6,263.01	-955.59	6,319.43	0.00	0.00	
14,400.00	90.00	0.78	7,406.00	6,363.01	-954.23	6,418.99	0.00	0.00	
14,500.00	90.00	0.78	7,406.00	6,463.00	-952.87	6,518.55	0.00	0.00	
14,600.00	90.00	0.78	7,406.00	6,562.99	-951.51	6,618.11	0.00	0.00	
14,700.00	90.00	0.78	7,406.00	6,662.98	-950.15	6,717.67	0.00	0.00	
14,800.00	90.00	0.78	7,406.00	6,762.97	-948.79	6,817.23	0.00	0.00	

# Cathedral Energy Services

## Planning Report

<b>Database:</b>	USA EDM 5000 Multi Users DB	<b>Local Co-ordinate Reference:</b>	Well DREAM WEAVER North 3D-21H-N268 - SI
<b>Company:</b>	Crestone Peak Resources	<b>TVD Reference:</b>	23' KB @ 4924.00usft (Original Well Elev)
<b>Project:</b>	DJ BASIN	<b>MD Reference:</b>	23' KB @ 4924.00usft (Original Well Elev)
<b>Site:</b>	S21-T2N-R68W	<b>North Reference:</b>	True
<b>Well:</b>	DREAM WEAVER North 3D-21H-N268	<b>Survey Calculation Method:</b>	Minimum Curvature
<b>Wellbore:</b>	OH		
<b>Design:</b>	PLAN #2		

### Planned Survey

Measured Depth (usft)	Inclination (°)	Azimuth (°)	Vertical Depth (usft)	+N/-S (usft)	+E/-W (usft)	Vertical Section (usft)	Dogleg Rate (°/100usft)	Build Rate (°/100u)	Comments / Formations
14,900.00	90.00	0.78	7,406.00	6,862.96	-947.43	6,916.79	0.00	0.00	
15,000.00	90.00	0.78	7,406.00	6,962.95	-946.06	7,016.35	0.00	0.00	
15,100.00	90.00	0.78	7,406.00	7,062.94	-944.70	7,115.91	0.00	0.00	
15,200.00	90.00	0.78	7,406.00	7,162.93	-943.34	7,215.47	0.00	0.00	
15,300.00	90.00	0.78	7,406.00	7,262.92	-941.98	7,315.03	0.00	0.00	
15,400.00	90.00	0.78	7,406.00	7,362.91	-940.62	7,414.59	0.00	0.00	
15,500.00	90.00	0.78	7,406.00	7,462.90	-939.26	7,514.15	0.00	0.00	
15,600.00	90.00	0.78	7,406.00	7,562.89	-937.90	7,613.71	0.00	0.00	
15,700.00	90.00	0.78	7,406.00	7,662.89	-936.54	7,713.28	0.00	0.00	
15,800.00	90.00	0.78	7,406.00	7,762.88	-935.18	7,812.84	0.00	0.00	
15,900.00	90.00	0.78	7,406.00	7,862.87	-933.82	7,912.40	0.00	0.00	
16,000.00	90.00	0.78	7,406.00	7,962.86	-932.45	8,011.96	0.00	0.00	
16,100.00	90.00	0.78	7,406.00	8,062.85	-931.09	8,111.52	0.00	0.00	
16,200.00	90.00	0.78	7,406.00	8,162.84	-929.73	8,211.08	0.00	0.00	
16,300.00	90.00	0.78	7,406.00	8,262.83	-928.37	8,310.64	0.00	0.00	
16,400.00	90.00	0.78	7,406.00	8,362.82	-927.01	8,410.20	0.00	0.00	
16,500.00	90.00	0.78	7,406.00	8,462.81	-925.65	8,509.76	0.00	0.00	
16,600.00	90.00	0.78	7,406.00	8,562.80	-924.29	8,609.32	0.00	0.00	
16,700.00	90.00	0.78	7,406.00	8,662.79	-922.93	8,708.88	0.00	0.00	
16,800.00	90.00	0.78	7,406.00	8,762.78	-921.57	8,808.44	0.00	0.00	
16,900.00	90.00	0.78	7,406.00	8,862.77	-920.21	8,908.00	0.00	0.00	
17,000.00	90.00	0.78	7,406.00	8,962.76	-918.84	9,007.56	0.00	0.00	
17,100.00	90.00	0.78	7,406.00	9,062.76	-917.48	9,107.12	0.00	0.00	
17,200.00	90.00	0.78	7,406.00	9,162.75	-916.12	9,206.68	0.00	0.00	
17,300.00	90.00	0.78	7,406.00	9,262.74	-914.76	9,306.24	0.00	0.00	
17,400.00	90.00	0.78	7,406.00	9,362.73	-913.40	9,405.80	0.00	0.00	
17,500.00	90.00	0.78	7,406.00	9,462.72	-912.04	9,505.37	0.00	0.00	
17,600.00	90.00	0.78	7,406.00	9,562.71	-910.68	9,604.93	0.00	0.00	
17,700.00	90.00	0.78	7,406.00	9,662.70	-909.32	9,704.49	0.00	0.00	
17,800.00	90.00	0.78	7,406.00	9,762.69	-907.96	9,804.05	0.00	0.00	
17,900.00	90.00	0.78	7,406.00	9,862.68	-906.60	9,903.61	0.00	0.00	
18,000.00	90.00	0.78	7,406.00	9,962.67	-905.23	10,003.17	0.00	0.00	
18,100.00	90.00	0.78	7,406.00	10,062.66	-903.87	10,102.73	0.00	0.00	
18,200.00	90.00	0.78	7,406.00	10,162.65	-902.51	10,202.29	0.00	0.00	
18,300.00	90.00	0.78	7,406.00	10,262.64	-901.15	10,301.85	0.00	0.00	
18,400.00	90.00	0.78	7,406.00	10,362.63	-899.79	10,401.41	0.00	0.00	
18,500.00	90.00	0.78	7,406.00	10,462.63	-898.43	10,500.97	0.00	0.00	
18,600.00	90.00	0.78	7,406.00	10,562.62	-897.07	10,600.53	0.00	0.00	
18,700.00	90.00	0.78	7,406.00	10,662.61	-895.71	10,700.09	0.00	0.00	
18,800.00	90.00	0.78	7,406.00	10,762.60	-894.35	10,799.65	0.00	0.00	
18,900.00	90.00	0.78	7,406.00	10,862.59	-892.99	10,899.21	0.00	0.00	
19,000.00	90.00	0.78	7,406.00	10,962.58	-891.62	10,998.77	0.00	0.00	
19,100.00	90.00	0.78	7,406.00	11,062.57	-890.26	11,098.33	0.00	0.00	
19,200.00	90.00	0.78	7,406.00	11,162.56	-888.90	11,197.89	0.00	0.00	
19,300.00	90.00	0.78	7,406.00	11,262.55	-887.54	11,297.46	0.00	0.00	
19,400.00	90.00	0.78	7,406.00	11,362.54	-886.18	11,397.02	0.00	0.00	
19,500.00	90.00	0.78	7,406.00	11,462.53	-884.82	11,496.58	0.00	0.00	
19,545.49	90.00	0.78	7,406.00	11,508.02	-884.20	11,541.86	0.00	0.00	
19,600.00	90.00	344.43	7,406.00	11,561.89	-891.19	11,596.13	30.00	0.00	
19,681.42	90.00	320.00	7,406.00	11,633.38	-928.86	11,670.40	30.00	0.00	
19,691.42	90.00	320.00	7,406.00	11,641.04	-935.29	11,678.55	0.00	0.00	

# Cathedral Energy Services

## Planning Report

<b>Database:</b>	USA EDM 5000 Multi Users DB	<b>Local Co-ordinate Reference:</b>	Well DREAM WEAVER North 3D-21H-N268 - SI
<b>Company:</b>	Crestone Peak Resources	<b>TVD Reference:</b>	23' KB @ 4924.00usft (Original Well Elev)
<b>Project:</b>	DJ BASIN	<b>MD Reference:</b>	23' KB @ 4924.00usft (Original Well Elev)
<b>Site:</b>	S21-T2N-R68W	<b>North Reference:</b>	True
<b>Well:</b>	DREAM WEAVER North 3D-21H-N268	<b>Survey Calculation Method:</b>	Minimum Curvature
<b>Wellbore:</b>	OH		
<b>Design:</b>	PLAN #2		

Targets									
Target Name	Dip Angle	Dip Dir.	TVD	+N/-S	+E/-W	Northing	Easting	Latitude	Longitude
- hit/miss target	(°)	(°)	(usft)	(usft)	(usft)	(usft)	(usft)		
- Shape									
DW N. 3D BHL OLD	0.00	0.00	7,406.00	11,661.04	-957.52	1,298,585.20	3,135,650.93	40.151992	-105.014714
- plan misses target center by 29.90usft at 19691.42usft MD (7406.00 TVD, 11641.04 N, -935.29 E)									
- Point									
DW N. 3D BHL NEW	0.00	0.00	7,406.00	11,641.04	-935.29	1,298,565.32	3,135,673.27	40.151937	-105.014634
- plan hits target center									
- Point									
DW N. 3D TPZ	0.00	0.00	7,406.00	-84.79	-1,044.11	1,286,839.07	3,135,629.08	40.119748	-105.015022
- plan hits target center									
- Point									