

# BONANZA CREEK OIL COMPANY

Location: COLORADO Slot: SLOT#01 ANTELOPE Y44-19-18MRLNC (225°FSL & 1168°FEL, SEC.19)  
Field: WELD COUNTY Well: ANTELOPE Y44-19-18MRLNC  
Facility: SEC.19-T05N-R62W Wellbore: ANTELOPE Y44-19-18MRLNC PWB

Plot reference wellpath is ANTELOPE Y44-19-18MRLNC PWP (REV-A.0)

True vertical depths are referenced to RIG (17KB) (RKB)

Measured depths are referenced to RIG (17KB) (RKB)

RIG (17KB) (RKB) to Mean Sea Level: 4675 feet

Mean Sea Level to Mud line (At Slot: SLOT#01 ANTELOPE Y44-19-18MRLNC (225°FSL & 1168°FEL, SEC.19)): 0 feet

Coordinates are in feet referenced to Slot

Grid System: NAD83 / Lambert Colorado SP, Northern Zone (501), US feet

\* = Wellpath was transformed from a different geodetic datum

North Reference: True north

Scale: True distance

Depths are in feet

Created by: ingimjmr on 2018-01-10

Database: Denver

## Location Information

| Facility Name  |              |              |                   | Grid East (US ft) | Grid North (US ft) | Latitude       | Longitude       |
|--|--------------|--------------|-------------------|-------------------|--------------------|----------------|-----------------|
| SEC.19-T05N-R62W   |              |              |                   | 3317343.701       | 1382714.207        | 40°22'42.085"N | 104°21'39.240"W |
| Slot   | Local N (ft) | Local E (ft) | Grid East (US ft) |                   | Grid North (US ft) | Latitude       | Longitude       |
| SLOT#01 ANTELOPE Y44-19-18MRLNC (225°FSL & 1168°FEL, SEC.19)   | 0.00         | 0.00         | 3317343.701       |                   | 1382714.207        | 40°22'42.085"N | 104°21'39.240"W |
| RIG (17KB) (RKB) to Mud line (At Slot: SLOT#01 ANTELOPE Y44-19-18MRLNC (225°FSL & 1168°FEL, SEC.19)) |              |              |                   | 4675ft            |                    |                |                 |
| Mean Sea Level to Mud line (At Slot: SLOT#01 ANTELOPE Y44-19-18MRLNC (225°FSL & 1168°FEL, SEC.19))   |              |              |                   | 0ft               |                    |                |                 |
| RIG (17KB) (RKB) to Mean Sea Level   |              |              |                   | 4675ft            |                    |                |                 |

## Well Profile Data

| Design Comment      | MD (ft)  | Inc (°) | Az (°)  | TVD (ft) | Local N (ft) | Local E (ft) | DLS (°/100ft) | VS (ft) |
|---------------------|----------|---------|---------|----------|--------------|--------------|---------------|---------|
| Tie On              | 17.00    | 0.000   | 112.532 | 17.00    | 0.00         | 0.00         | 0.00          | 0.00    |
| End of Tangent      | 1700.00  | 0.000   | 112.532 | 1700.00  | 0.00         | 0.00         | 0.00          | 0.00    |
| End of Build (XS)   | 2257.72  | 11.154  | 112.532 | 2254.20  | -20.74       | 49.99        | 2.00          | -10.98  |
| End of Tangent (XS) | 5919.41  | 11.154  | 112.532 | 5846.73  | -292.18      | 704.28       | 0.00          | -154.71 |
| End of 3D Arc (XS)  | 6859.85  | 90.000  | 1.156   | 6450.00  | 277.00       | 826.55       | 10.00         | 427.30  |
| End of Tangent (XS) | 11383.77 | 90.000  | 1.156   | 6450.00  | 4800.00      | 917.80       | 0.00          | 4886.96 |

## Hole and Casing Sections

| Name                   | Start MD (ft) | End MD (ft) | Interval (ft) | Start TVD (ft) | End TVD (ft) | Start Local N (ft) | Start Local E (ft) | End Local N (ft) | End Local E (ft) | Wellbore                    |
|------------------------|---------------|-------------|---------------|----------------|--------------|--------------------|--------------------|------------------|------------------|-----------------------------|
| 9.625in Casing Surface | 17.00         | 1550.00     | 1533.00       | 17.00          | 1550.00      | 0.00               | 0.00               | 0.00             | 0.00             | ANTELOPE Y44-19-18MRLNC PWB |
| 8.5in Open Hole        | 1550.00       | 11383.77    | 9833.77       | 1550.00        | N/A          | 0.00               | 0.00               | N/A              | N/A              | ANTELOPE Y44-19-18MRLNC PWB |

## Survey Program

| Start MD (ft) | End MD (ft) | Tool                | Model  | Log Name/Comment | Wellbore                    |
|---------------|-------------|---------------------|--|------------------|-----------------------------|
| 17.00         | 1550.00     | BHI NavTrak         | Custom BHI NavTrak (Standard Rotating/Axial Cor) (Rockies 0.03G model)       |                  | ANTELOPE Y44-19-18MRLNC PWB |
| 1550.00       | 11383.77    | BHI AutoTrack Curve | Custom BHI AutoTrack Curve (Axial Corr, Short spacing) (Rockies 0.03G model) |                  | ANTELOPE Y44-19-18MRLNC PWB |

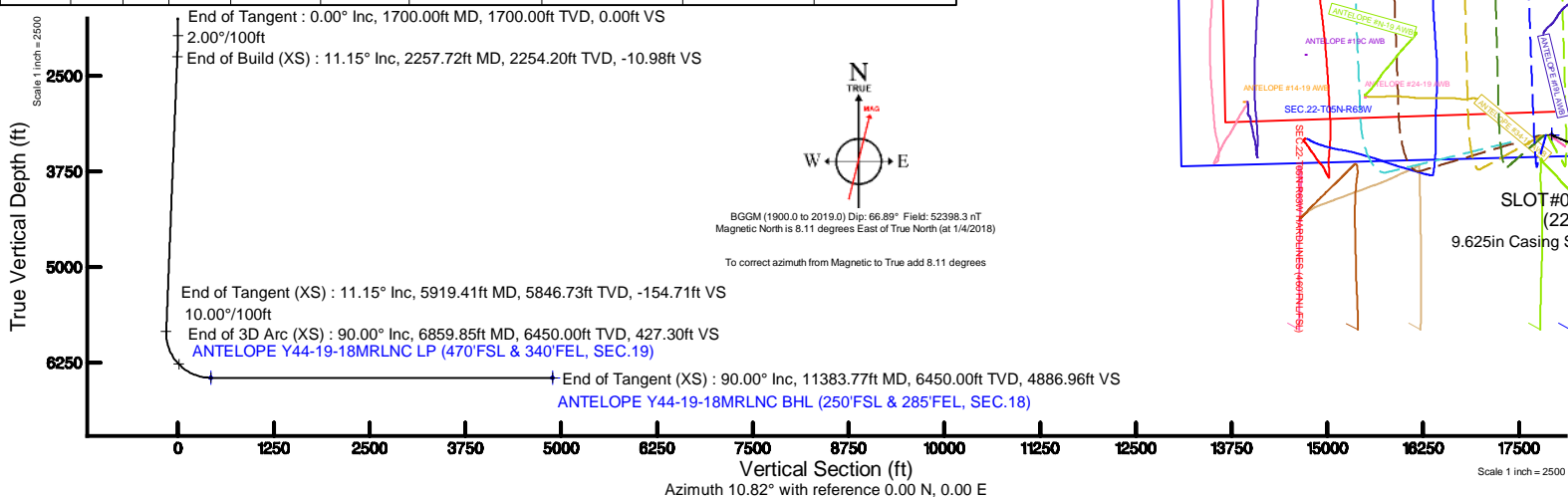
## Bottom Hole Location

| MD (ft)  | Inc (°) | Az (°) | TVD (ft) | Local N (ft) | Local E (ft) | Grid East (US ft) | Grid North (US ft) | Latitude       | Longitude       |
|----------|---------|--------|----------|--------------|--------------|-------------------|--------------------|----------------|-----------------|
| 11383.77 | 90.000  | 1.156  | 6450.00  | 4800.00      | 917.80       | 3318199.73        | 1387525.40         | 40°23'29.517"N | 104°21'27.379"W |

End of Tangent : 0.00° Inc, 1700.00ft MD, 1700.00ft TVD, 0.00ft VS  
2.00°/100ft  
End of Build (XS) : 11.15° Inc, 2257.72ft MD, 2254.20ft TVD, -10.98ft VS

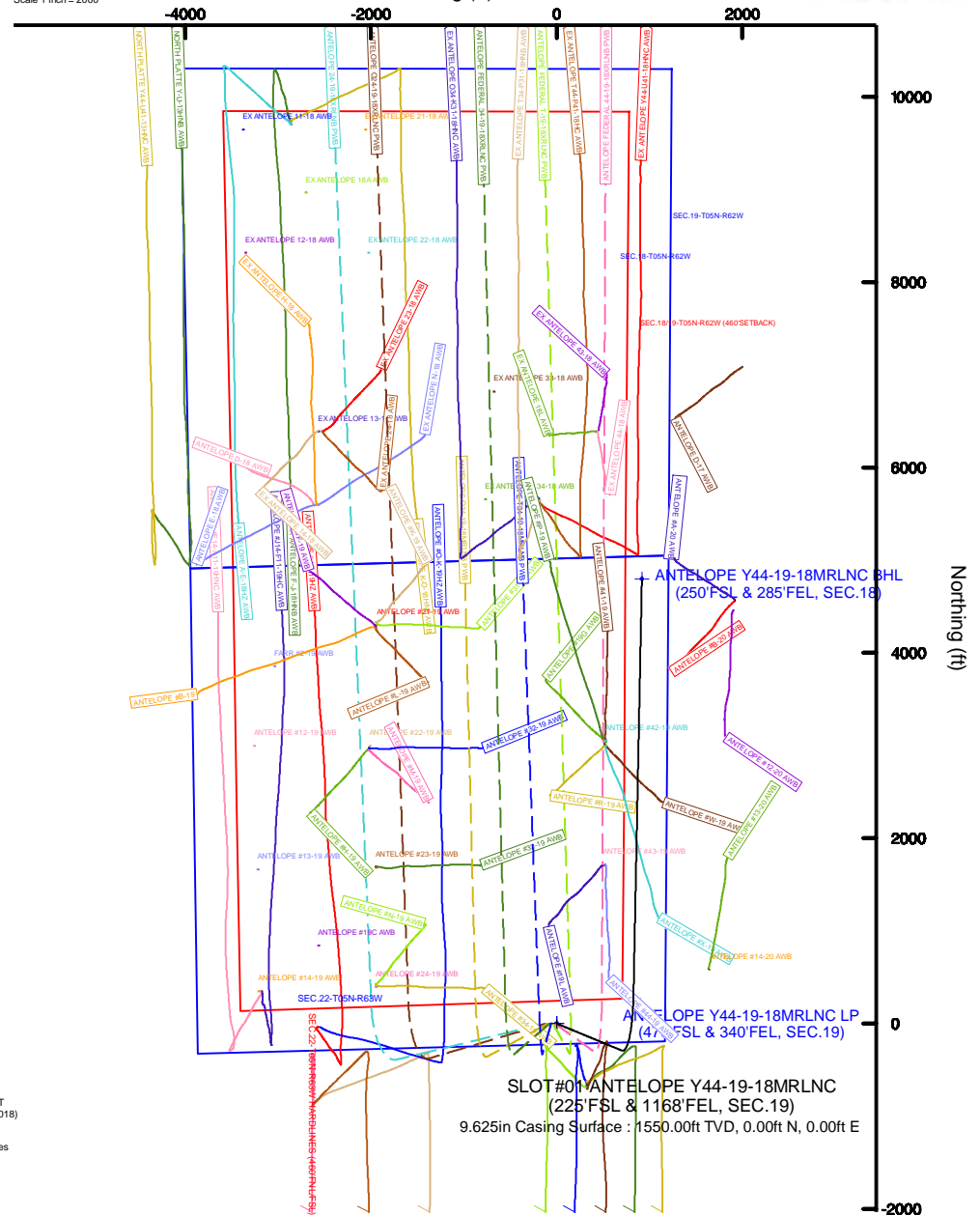
End of Tangent (XS) : 11.15° Inc, 5919.41ft MD, 5846.73ft TVD, -154.71ft VS  
10.00°/100ft  
End of 3D Arc (XS) : 90.00° Inc, 6859.85ft MD, 6450.00ft TVD, 427.30ft VS  
ANTELOPE Y44-19-18MRLNC LP (470°FSL & 340°FEL, SEC.19)

End of Tangent (XS) : 90.00° Inc, 11383.77ft MD, 6450.00ft TVD, 4886.96ft VS  
ANTELOPE Y44-19-18MRLNC BHL (250°FSL & 285°FEL, SEC.18)



Scale 1 inch = 2000

Easting (ft)



Northing (ft)



# Planned Wellpath Report

## ANTELOPE Y44-19-18MRLNC PWP (REV-A.0)

Page 1 of 6



### REFERENCE WELLPATH IDENTIFICATION

|          |                           |          |  |
|----------|---------------------------|----------|--|
| Operator | BONANZA CREEK OIL COMPANY | Slot     | SLOT#01 ANTELOPE Y44-19-18MRLNC (225'FSL & 1168'FEL, SEC.19) |
| Area     | COLORADO                  | Well     | ANTELOPE Y44-19-18MRLNC                                      |
| Field    | WELD COUNTY               | Wellbore | ANTELOPE Y44-19-18MRLNC PWB                                  |
| Facility | SEC.19-T05N-R62W          |          |  |

### REPORT SETUP INFORMATION

|                     |   |                      |  |
|---------------------|---|----------------------|--|
| Projection System   | NAD83 / Lambert Colorado SP, Northern Zone (501), US feet | Software System      | WellArchitect® 5.0                               |
| North Reference     | True  | User                 | Ingmjmr  |
| Scale               | 0.999959  | Report Generated     | 1/10/2018 at 12:09:09 PM                         |
| Convergence at slot | 0.74° East  | Database/Source file | Denver/ANTELOPE_Y44-19-18MRLNC_PWP__REV-A.0_.xml |

### WELLPATH LOCATION

|                       | Local coordinates |          | Grid coordinates |                 | Geographic coordinates |                 |
|-----------------------|-------------------|----------|------------------|-----------------|------------------------|-----------------|
|                       | North[ft]         | East[ft] | Easting[US ft]   | Northing[US ft] | Latitude               | Longitude       |
| Slot Location         | 0.00              | 0.00     | 3317343.70       | 1382714.21      | 40°22'42.085"N         | 104°21'39.240"W |
| Facility Reference Pt |                   |          | 3317343.70       | 1382714.21      | 40°22'42.085"N         | 104°21'39.240"W |
| Field Reference Pt    |                   |          | 3224525.77       | 1254425.87      | 40°01'44.400"N         | 104°41'53.556"W |

### WELLPATH DATUM

|                          |                   |  |                   |
|--------------------------|-------------------|--|-------------------|
| Calculation method       | Minimum curvature | RIG (17'KB) (RKB) to Facility Vertical Datum   | 4675.00ft         |
| Horizontal Reference Pt  | Slot              | RIG (17'KB) (RKB) to Mean Sea Level  | 4675.00ft         |
| Vertical Reference Pt    | RIG (17'KB) (RKB) | RIG (17'KB) (RKB) to Mud Line at Slot (SLOT#01 ANTELOPE Y44-19-18MRLNC (225'FSL & 1168'FEL, SEC.19)) | 4675.00ft         |
| MD Reference Pt          | RIG (17'KB) (RKB) | Section Origin   | N 0.00, E 0.00 ft |
| Field Vertical Reference | Mean Sea Level    | Section Azimuth  | 10.82°            |



# Planned Wellpath Report

ANTELOPE Y44-19-18MRLNC PWP (REV-A.0)

Page 2 of 6



| REFERENCE WELLPATH IDENTIFICATION |                           |          |  |
|-----------------------------------|---------------------------|----------|--|
| Operator                          | BONANZA CREEK OIL COMPANY | Slot     | SLOT#01 ANTELOPE Y44-19-18MRLNC (225'FSL & 1168'FEL, SEC.19) |
| Area                              | COLORADO                  | Well     | ANTELOPE Y44-19-18MRLNC                                      |
| Field                             | WELD COUNTY               | Wellbore | ANTELOPE Y44-19-18MRLNC PWB                                  |
| Facility                          | SEC.19-T05N-R62W          |          |  |

| WELLPATH DATA (120 stations) † = interpolated/extrapolated station |                    |                |             |                   |               |              |                |                 |                  |                   |
|--|--------------------|----------------|-------------|-------------------|---------------|--------------|----------------|-----------------|------------------|-------------------|
| MD<br>[ft]   | Inclination<br>[°] | Azimuth<br>[°] | TVD<br>[ft] | Vert Sect<br>[ft] | North<br>[ft] | East<br>[ft] | Latitude       | Longitude       | DLS<br>[°/100ft] | Comments          |
| 0.00†  | 0.000              | 112.532        | 0.00        | 0.00              | 0.00          | 0.00         | 40°22'42.085"N | 104°21'39.240"W | 0.00             |                   |
| 17.00  | 0.000              | 112.532        | 17.00       | 0.00              | 0.00          | 0.00         | 40°22'42.085"N | 104°21'39.240"W | 0.00             | Tie On            |
| 117.00†  | 0.000              | 112.532        | 117.00      | 0.00              | 0.00          | 0.00         | 40°22'42.085"N | 104°21'39.240"W | 0.00             |                   |
| 217.00†  | 0.000              | 112.532        | 217.00      | 0.00              | 0.00          | 0.00         | 40°22'42.085"N | 104°21'39.240"W | 0.00             |                   |
| 317.00†  | 0.000              | 112.532        | 317.00      | 0.00              | 0.00          | 0.00         | 40°22'42.085"N | 104°21'39.240"W | 0.00             |                   |
| 417.00†  | 0.000              | 112.532        | 417.00      | 0.00              | 0.00          | 0.00         | 40°22'42.085"N | 104°21'39.240"W | 0.00             |                   |
| 517.00†  | 0.000              | 112.532        | 517.00      | 0.00              | 0.00          | 0.00         | 40°22'42.085"N | 104°21'39.240"W | 0.00             |                   |
| 617.00†  | 0.000              | 112.532        | 617.00      | 0.00              | 0.00          | 0.00         | 40°22'42.085"N | 104°21'39.240"W | 0.00             |                   |
| 717.00†  | 0.000              | 112.532        | 717.00      | 0.00              | 0.00          | 0.00         | 40°22'42.085"N | 104°21'39.240"W | 0.00             |                   |
| 817.00†  | 0.000              | 112.532        | 817.00      | 0.00              | 0.00          | 0.00         | 40°22'42.085"N | 104°21'39.240"W | 0.00             |                   |
| 917.00†  | 0.000              | 112.532        | 917.00      | 0.00              | 0.00          | 0.00         | 40°22'42.085"N | 104°21'39.240"W | 0.00             |                   |
| 1017.00†   | 0.000              | 112.532        | 1017.00     | 0.00              | 0.00          | 0.00         | 40°22'42.085"N | 104°21'39.240"W | 0.00             |                   |
| 1117.00†   | 0.000              | 112.532        | 1117.00     | 0.00              | 0.00          | 0.00         | 40°22'42.085"N | 104°21'39.240"W | 0.00             |                   |
| 1217.00†   | 0.000              | 112.532        | 1217.00     | 0.00              | 0.00          | 0.00         | 40°22'42.085"N | 104°21'39.240"W | 0.00             |                   |
| 1317.00†   | 0.000              | 112.532        | 1317.00     | 0.00              | 0.00          | 0.00         | 40°22'42.085"N | 104°21'39.240"W | 0.00             |                   |
| 1417.00†   | 0.000              | 112.532        | 1417.00     | 0.00              | 0.00          | 0.00         | 40°22'42.085"N | 104°21'39.240"W | 0.00             |                   |
| 1517.00†   | 0.000              | 112.532        | 1517.00     | 0.00              | 0.00          | 0.00         | 40°22'42.085"N | 104°21'39.240"W | 0.00             |                   |
| 1617.00†   | 0.000              | 112.532        | 1617.00     | 0.00              | 0.00          | 0.00         | 40°22'42.085"N | 104°21'39.240"W | 0.00             |                   |
| 1700.00  | 0.000              | 112.532        | 1700.00     | 0.00              | 0.00          | 0.00         | 40°22'42.085"N | 104°21'39.240"W | 0.00             | End of Tangent    |
| 1717.00†   | 0.340              | 112.532        | 1717.00     | -0.01             | -0.02         | 0.05         | 40°22'42.085"N | 104°21'39.239"W | 2.00             |                   |
| 1817.00†   | 2.340              | 112.532        | 1816.97     | -0.48             | -0.92         | 2.21         | 40°22'42.076"N | 104°21'39.211"W | 2.00             |                   |
| 1917.00†   | 4.340              | 112.532        | 1916.79     | -1.67             | -3.15         | 7.59         | 40°22'42.054"N | 104°21'39.142"W | 2.00             |                   |
| 2017.00†   | 6.340              | 112.532        | 2016.35     | -3.56             | -6.71         | 16.18        | 40°22'42.019"N | 104°21'39.031"W | 2.00             |                   |
| 2117.00†   | 8.340              | 112.532        | 2115.53     | -6.15             | -11.61        | 27.98        | 40°22'41.970"N | 104°21'38.878"W | 2.00             |                   |
| 2217.00†   | 10.340             | 112.532        | 2214.20     | -9.44             | -17.83        | 42.97        | 40°22'41.909"N | 104°21'38.685"W | 2.00             |                   |
| 2257.72  | 11.154             | 112.532        | 2254.20     | -10.98            | -20.74        | 49.99        | 40°22'41.880"N | 104°21'38.594"W | 2.00             | End of Build (XS) |
| 2317.00†   | 11.154             | 112.532        | 2312.36     | -13.31            | -25.13        | 60.58        | 40°22'41.837"N | 104°21'38.457"W | 0.00             |                   |
| 2417.00†   | 11.154             | 112.532        | 2410.47     | -17.23            | -32.55        | 78.45        | 40°22'41.763"N | 104°21'38.226"W | 0.00             |                   |
| 2517.00†   | 11.154             | 112.532        | 2508.59     | -21.16            | -39.96        | 96.32        | 40°22'41.690"N | 104°21'37.995"W | 0.00             |                   |
| 2617.00†   | 11.154             | 112.532        | 2606.70     | -25.08            | -47.37        | 114.18       | 40°22'41.617"N | 104°21'37.765"W | 0.00             |                   |



# Planned Wellpath Report

ANTELOPE Y44-19-18MRLNC PWP (REV-A.0)

Page 3 of 6



| REFERENCE WELLPATH IDENTIFICATION |                           |          |  |
|-----------------------------------|---------------------------|----------|--|
| Operator                          | BONANZA CREEK OIL COMPANY | Slot     | SLOT#01 ANTELOPE Y44-19-18MRLNC (225'FSL & 1168'FEL, SEC.19) |
| Area                              | COLORADO                  | Well     | ANTELOPE Y44-19-18MRLNC                                      |
| Field                             | WELD COUNTY               | Wellbore | ANTELOPE Y44-19-18MRLNC PWB                                  |
| Facility                          | SEC.19-T05N-R62W          |          |  |

| WELLPATH DATA (120 stations) † = interpolated/extrapolated station |                    |                |             |                   |               |              |                |                 |                  |          |
|--|--------------------|----------------|-------------|-------------------|---------------|--------------|----------------|-----------------|------------------|----------|
| MD<br>[ft]   | Inclination<br>[°] | Azimuth<br>[°] | TVD<br>[ft] | Vert Sect<br>[ft] | North<br>[ft] | East<br>[ft] | Latitude       | Longitude       | DLS<br>[°/100ft] | Comments |
| 2717.00†   | 11.154             | 112.532        | 2704.81     | -29.01            | -54.78        | 132.05       | 40°22'41.544"N | 104°21'37.534"W | 0.00             |          |
| 2817.00†   | 11.154             | 112.532        | 2802.92     | -32.93            | -62.20        | 149.92       | 40°22'41.470"N | 104°21'37.303"W | 0.00             |          |
| 2917.00†   | 11.154             | 112.532        | 2901.03     | -36.86            | -69.61        | 167.79       | 40°22'41.397"N | 104°21'37.072"W | 0.00             |          |
| 3017.00†   | 11.154             | 112.532        | 2999.14     | -40.79            | -77.02        | 185.66       | 40°22'41.324"N | 104°21'36.841"W | 0.00             |          |
| 3117.00†   | 11.154             | 112.532        | 3097.25     | -44.71            | -84.44        | 203.53       | 40°22'41.251"N | 104°21'36.610"W | 0.00             |          |
| 3217.00†   | 11.154             | 112.532        | 3195.36     | -48.64            | -91.85        | 221.40       | 40°22'41.177"N | 104°21'36.379"W | 0.00             |          |
| 3317.00†   | 11.154             | 112.532        | 3293.47     | -52.56            | -99.26        | 239.27       | 40°22'41.104"N | 104°21'36.148"W | 0.00             |          |
| 3417.00†   | 11.154             | 112.532        | 3391.58     | -56.49            | -106.68       | 257.13       | 40°22'41.031"N | 104°21'35.918"W | 0.00             |          |
| 3517.00†   | 11.154             | 112.532        | 3489.70     | -60.41            | -114.09       | 275.00       | 40°22'40.958"N | 104°21'35.687"W | 0.00             |          |
| 3617.00†   | 11.154             | 112.532        | 3587.81     | -64.34            | -121.50       | 292.87       | 40°22'40.884"N | 104°21'35.456"W | 0.00             |          |
| 3717.00†   | 11.154             | 112.532        | 3685.92     | -68.26            | -128.91       | 310.74       | 40°22'40.811"N | 104°21'35.225"W | 0.00             |          |
| 3817.00†   | 11.154             | 112.532        | 3784.03     | -72.19            | -136.33       | 328.61       | 40°22'40.738"N | 104°21'34.994"W | 0.00             |          |
| 3917.00†   | 11.154             | 112.532        | 3882.14     | -76.11            | -143.74       | 346.48       | 40°22'40.665"N | 104°21'34.763"W | 0.00             |          |
| 4017.00†   | 11.154             | 112.532        | 3980.25     | -80.04            | -151.15       | 364.35       | 40°22'40.591"N | 104°21'34.532"W | 0.00             |          |
| 4117.00†   | 11.154             | 112.532        | 4078.36     | -83.96            | -158.57       | 382.21       | 40°22'40.518"N | 104°21'34.301"W | 0.00             |          |
| 4217.00†   | 11.154             | 112.532        | 4176.47     | -87.89            | -165.98       | 400.08       | 40°22'40.445"N | 104°21'34.070"W | 0.00             |          |
| 4317.00†   | 11.154             | 112.532        | 4274.58     | -91.81            | -173.39       | 417.95       | 40°22'40.372"N | 104°21'33.840"W | 0.00             |          |
| 4417.00†   | 11.154             | 112.532        | 4372.69     | -95.74            | -180.81       | 435.82       | 40°22'40.298"N | 104°21'33.609"W | 0.00             |          |
| 4517.00†   | 11.154             | 112.532        | 4470.80     | -99.67            | -188.22       | 453.69       | 40°22'40.225"N | 104°21'33.378"W | 0.00             |          |
| 4617.00†   | 11.154             | 112.532        | 4568.92     | -103.59           | -195.63       | 471.56       | 40°22'40.152"N | 104°21'33.147"W | 0.00             |          |
| 4717.00†   | 11.154             | 112.532        | 4667.03     | -107.52           | -203.05       | 489.43       | 40°22'40.079"N | 104°21'32.916"W | 0.00             |          |
| 4817.00†   | 11.154             | 112.532        | 4765.14     | -111.44           | -210.46       | 507.29       | 40°22'40.005"N | 104°21'32.685"W | 0.00             |          |
| 4917.00†   | 11.154             | 112.532        | 4863.25     | -115.37           | -217.87       | 525.16       | 40°22'39.932"N | 104°21'32.454"W | 0.00             |          |
| 5017.00†   | 11.154             | 112.532        | 4961.36     | -119.29           | -225.28       | 543.03       | 40°22'39.859"N | 104°21'32.223"W | 0.00             |          |
| 5117.00†   | 11.154             | 112.532        | 5059.47     | -123.22           | -232.70       | 560.90       | 40°22'39.785"N | 104°21'31.993"W | 0.00             |          |
| 5217.00†   | 11.154             | 112.532        | 5157.58     | -127.14           | -240.11       | 578.77       | 40°22'39.712"N | 104°21'31.762"W | 0.00             |          |
| 5317.00†   | 11.154             | 112.532        | 5255.69     | -131.07           | -247.52       | 596.64       | 40°22'39.639"N | 104°21'31.531"W | 0.00             |          |
| 5417.00†   | 11.154             | 112.532        | 5353.80     | -134.99           | -254.94       | 614.51       | 40°22'39.566"N | 104°21'31.300"W | 0.00             |          |
| 5517.00†   | 11.154             | 112.532        | 5451.91     | -138.92           | -262.35       | 632.37       | 40°22'39.492"N | 104°21'31.069"W | 0.00             |          |
| 5617.00†   | 11.154             | 112.532        | 5550.03     | -142.84           | -269.76       | 650.24       | 40°22'39.419"N | 104°21'30.838"W | 0.00             |          |



# Planned Wellpath Report

ANTELOPE Y44-19-18MRLNC PWP (REV-A.0)

Page 4 of 6



| REFERENCE WELLPATH IDENTIFICATION |                           |          |  |
|-----------------------------------|---------------------------|----------|--|
| Operator                          | BONANZA CREEK OIL COMPANY | Slot     | SLOT#01 ANTELOPE Y44-19-18MRLNC (225'FSL & 1168'FEL, SEC.19) |
| Area                              | COLORADO                  | Well     | ANTELOPE Y44-19-18MRLNC                                      |
| Field                             | WELD COUNTY               | Wellbore | ANTELOPE Y44-19-18MRLNC PWB                                  |
| Facility                          | SEC.19-T05N-R62W          |          |  |

| WELLPATH DATA (120 stations) † = interpolated/extrapolated station |                    |                |                      |                   |               |              |                |                 |                  |                     |
|--|--------------------|----------------|----------------------|-------------------|---------------|--------------|----------------|-----------------|------------------|---------------------|
| MD<br>[ft]   | Inclination<br>[°] | Azimuth<br>[°] | TVD<br>[ft]          | Vert Sect<br>[ft] | North<br>[ft] | East<br>[ft] | Latitude       | Longitude       | DLS<br>[°/100ft] | Comments            |
| 5717.00†   | 11.154             | 112.532        | 5648.14              | -146.77           | -277.18       | 668.11       | 40°22'39.346"N | 104°21'30.607"W | 0.00             |                     |
| 5817.00†   | 11.154             | 112.532        | 5746.25              | -150.69           | -284.59       | 685.98       | 40°22'39.273"N | 104°21'30.376"W | 0.00             |                     |
| 5917.00†   | 11.154             | 112.532        | 5844.36              | -154.62           | -292.00       | 703.85       | 40°22'39.199"N | 104°21'30.146"W | 0.00             |                     |
| 5919.41  | 11.154             | 112.532        | 5846.73              | -154.71           | -292.18       | 704.28       | 40°22'39.198"N | 104°21'30.140"W | 0.00             | End of Tangent (XS) |
| 6017.00†   | 11.856             | 62.162         | 5942.58              | -150.36           | -291.11       | 721.91       | 40°22'39.208"N | 104°21'29.912"W | 10.00            |                     |
| 6117.00†   | 18.775             | 33.849         | 6039.10              | -129.07           | -272.91       | 740.00       | 40°22'39.388"N | 104°21'29.678"W | 10.00            |                     |
| 6217.00†   | 27.607             | 21.711         | 6130.98              | -91.42            | -237.93       | 757.58       | 40°22'39.734"N | 104°21'29.451"W | 10.00            |                     |
| 6317.00†   | 37.005             | 15.256         | 6215.43              | -38.52            | -187.24       | 774.11       | 40°22'40.235"N | 104°21'29.238"W | 10.00            |                     |
| 6417.00†   | 46.627             | 11.145         | 6289.89              | 27.99             | -122.38       | 789.09       | 40°22'40.876"N | 104°21'29.044"W | 10.00            |                     |
| 6517.00†   | 56.355             | 8.175          | 6352.08              | 106.12            | -45.32        | 802.07       | 40°22'41.637"N | 104°21'28.876"W | 10.00            |                     |
| 6617.00†   | 66.140             | 5.814          | 6400.13              | 193.47            | 41.59         | 812.65       | 40°22'42.496"N | 104°21'28.740"W | 10.00            |                     |
| 6717.00†   | 75.955             | 3.788          | 6432.58              | 287.40            | 135.72        | 820.50       | 40°22'43.426"N | 104°21'28.638"W | 10.00            |                     |
| 6817.00†   | 85.786             | 1.931          | 6448.42              | 385.05            | 234.21        | 825.40       | 40°22'44.399"N | 104°21'28.575"W | 10.00            |                     |
| 6859.85  | 90.000             | 1.156          | 6450.00 <sup>†</sup> | 427.30            | 277.00        | 826.55       | 40°22'44.822"N | 104°21'28.560"W | 10.00            | End of 3D Arc (XS)  |
| 6917.00†   | 90.000             | 1.156          | 6450.00              | 483.64            | 334.14        | 827.71       | 40°22'45.387"N | 104°21'28.545"W | 0.00             |                     |
| 7017.00†   | 90.000             | 1.156          | 6450.00              | 582.22            | 434.12        | 829.72       | 40°22'46.375"N | 104°21'28.519"W | 0.00             |                     |
| 7117.00†   | 90.000             | 1.156          | 6450.00              | 680.80            | 534.10        | 831.74       | 40°22'47.363"N | 104°21'28.493"W | 0.00             |                     |
| 7217.00†   | 90.000             | 1.156          | 6450.00              | 779.38            | 634.08        | 833.76       | 40°22'48.351"N | 104°21'28.467"W | 0.00             |                     |
| 7317.00†   | 90.000             | 1.156          | 6450.00              | 877.96            | 734.06        | 835.77       | 40°22'49.339"N | 104°21'28.440"W | 0.00             |                     |
| 7417.00†   | 90.000             | 1.156          | 6450.00              | 976.54            | 834.04        | 837.79       | 40°22'50.327"N | 104°21'28.414"W | 0.00             |                     |
| 7517.00†   | 90.000             | 1.156          | 6450.00              | 1075.12           | 934.02        | 839.81       | 40°22'51.315"N | 104°21'28.388"W | 0.00             |                     |
| 7617.00†   | 90.000             | 1.156          | 6450.00              | 1173.70           | 1034.00       | 841.83       | 40°22'52.302"N | 104°21'28.362"W | 0.00             |                     |
| 7717.00†   | 90.000             | 1.156          | 6450.00              | 1272.28           | 1133.98       | 843.84       | 40°22'53.290"N | 104°21'28.336"W | 0.00             |                     |
| 7817.00†   | 90.000             | 1.156          | 6450.00              | 1370.86           | 1233.96       | 845.86       | 40°22'54.278"N | 104°21'28.310"W | 0.00             |                     |
| 7917.00†   | 90.000             | 1.156          | 6450.00              | 1469.44           | 1333.94       | 847.88       | 40°22'55.266"N | 104°21'28.284"W | 0.00             |                     |
| 8017.00†   | 90.000             | 1.156          | 6450.00              | 1568.02           | 1433.92       | 849.89       | 40°22'56.254"N | 104°21'28.258"W | 0.00             |                     |
| 8117.00†   | 90.000             | 1.156          | 6450.00              | 1666.60           | 1533.90       | 851.91       | 40°22'57.242"N | 104°21'28.232"W | 0.00             |                     |
| 8217.00†   | 90.000             | 1.156          | 6450.00              | 1765.17           | 1633.88       | 853.93       | 40°22'58.230"N | 104°21'28.205"W | 0.00             |                     |
| 8317.00†   | 90.000             | 1.156          | 6450.00              | 1863.75           | 1733.86       | 855.94       | 40°22'59.218"N | 104°21'28.179"W | 0.00             |                     |
| 8417.00†   | 90.000             | 1.156          | 6450.00              | 1962.33           | 1833.84       | 857.96       | 40°23'00.206"N | 104°21'28.153"W | 0.00             |                     |



# Planned Wellpath Report

ANTELOPE Y44-19-18MRLNC PWP (REV-A.0)

Page 5 of 6



| REFERENCE WELLPATH IDENTIFICATION |                           |          |  |
|-----------------------------------|---------------------------|----------|--|
| Operator                          | BONANZA CREEK OIL COMPANY | Slot     | SLOT#01 ANTELOPE Y44-19-18MRLNC (225'FSL & 1168'FEL, SEC.19) |
| Area                              | COLORADO                  | Well     | ANTELOPE Y44-19-18MRLNC                                      |
| Field                             | WELD COUNTY               | Wellbore | ANTELOPE Y44-19-18MRLNC PWB                                  |
| Facility                          | SEC.19-T05N-R62W          |          |  |

| WELLPATH DATA (120 stations) † = interpolated/extrapolated station |                    |                |                      |                   |               |              |                |                 |                  |                     |
|--|--------------------|----------------|----------------------|-------------------|---------------|--------------|----------------|-----------------|------------------|---------------------|
| MD<br>[ft]   | Inclination<br>[°] | Azimuth<br>[°] | TVD<br>[ft]          | Vert Sect<br>[ft] | North<br>[ft] | East<br>[ft] | Latitude       | Longitude       | DLS<br>[°/100ft] | Comments            |
| 8517.00†   | 90.000             | 1.156          | 6450.00              | 2060.91           | 1933.81       | 859.98       | 40°23'01.194"N | 104°21'28.127"W | 0.00             |                     |
| 8617.00†   | 90.000             | 1.156          | 6450.00              | 2159.49           | 2033.79       | 861.99       | 40°23'02.182"N | 104°21'28.101"W | 0.00             |                     |
| 8717.00†   | 90.000             | 1.156          | 6450.00              | 2258.07           | 2133.77       | 864.01       | 40°23'03.170"N | 104°21'28.075"W | 0.00             |                     |
| 8817.00†   | 90.000             | 1.156          | 6450.00              | 2356.65           | 2233.75       | 866.03       | 40°23'04.158"N | 104°21'28.049"W | 0.00             |                     |
| 8917.00†   | 90.000             | 1.156          | 6450.00              | 2455.23           | 2333.73       | 868.04       | 40°23'05.146"N | 104°21'28.023"W | 0.00             |                     |
| 9017.00†   | 90.000             | 1.156          | 6450.00              | 2553.81           | 2433.71       | 870.06       | 40°23'06.134"N | 104°21'27.997"W | 0.00             |                     |
| 9117.00†   | 90.000             | 1.156          | 6450.00              | 2652.39           | 2533.69       | 872.08       | 40°23'07.122"N | 104°21'27.971"W | 0.00             |                     |
| 9217.00†   | 90.000             | 1.156          | 6450.00              | 2750.97           | 2633.67       | 874.10       | 40°23'08.110"N | 104°21'27.944"W | 0.00             |                     |
| 9317.00†   | 90.000             | 1.156          | 6450.00              | 2849.55           | 2733.65       | 876.11       | 40°23'09.098"N | 104°21'27.918"W | 0.00             |                     |
| 9417.00†   | 90.000             | 1.156          | 6450.00              | 2948.13           | 2833.63       | 878.13       | 40°23'10.086"N | 104°21'27.892"W | 0.00             |                     |
| 9517.00†   | 90.000             | 1.156          | 6450.00              | 3046.71           | 2933.61       | 880.15       | 40°23'11.074"N | 104°21'27.866"W | 0.00             |                     |
| 9617.00†   | 90.000             | 1.156          | 6450.00              | 3145.29           | 3033.59       | 882.16       | 40°23'12.062"N | 104°21'27.840"W | 0.00             |                     |
| 9717.00†   | 90.000             | 1.156          | 6450.00              | 3243.87           | 3133.57       | 884.18       | 40°23'13.050"N | 104°21'27.814"W | 0.00             |                     |
| 9817.00†   | 90.000             | 1.156          | 6450.00              | 3342.45           | 3233.55       | 886.20       | 40°23'14.038"N | 104°21'27.788"W | 0.00             |                     |
| 9917.00†   | 90.000             | 1.156          | 6450.00              | 3441.03           | 3333.53       | 888.21       | 40°23'15.026"N | 104°21'27.762"W | 0.00             |                     |
| 10017.00†  | 90.000             | 1.156          | 6450.00              | 3539.60           | 3433.51       | 890.23       | 40°23'16.014"N | 104°21'27.736"W | 0.00             |                     |
| 10117.00†  | 90.000             | 1.156          | 6450.00              | 3638.18           | 3533.49       | 892.25       | 40°23'17.002"N | 104°21'27.709"W | 0.00             |                     |
| 10217.00†  | 90.000             | 1.156          | 6450.00              | 3736.76           | 3633.47       | 894.26       | 40°23'17.990"N | 104°21'27.683"W | 0.00             |                     |
| 10317.00†  | 90.000             | 1.156          | 6450.00              | 3835.34           | 3733.45       | 896.28       | 40°23'18.978"N | 104°21'27.657"W | 0.00             |                     |
| 10417.00†  | 90.000             | 1.156          | 6450.00              | 3933.92           | 3833.43       | 898.30       | 40°23'19.965"N | 104°21'27.631"W | 0.00             |                     |
| 10517.00†  | 90.000             | 1.156          | 6450.00              | 4032.50           | 3933.41       | 900.32       | 40°23'20.953"N | 104°21'27.605"W | 0.00             |                     |
| 10617.00†  | 90.000             | 1.156          | 6450.00              | 4131.08           | 4033.39       | 902.33       | 40°23'21.941"N | 104°21'27.579"W | 0.00             |                     |
| 10717.00†  | 90.000             | 1.156          | 6450.00              | 4229.66           | 4133.37       | 904.35       | 40°23'22.929"N | 104°21'27.553"W | 0.00             |                     |
| 10817.00†  | 90.000             | 1.156          | 6450.00              | 4328.24           | 4233.35       | 906.37       | 40°23'23.917"N | 104°21'27.527"W | 0.00             |                     |
| 10917.00†  | 90.000             | 1.156          | 6450.00              | 4426.82           | 4333.33       | 908.38       | 40°23'24.905"N | 104°21'27.501"W | 0.00             |                     |
| 11017.00†  | 90.000             | 1.156          | 6450.00              | 4525.40           | 4433.31       | 910.40       | 40°23'25.893"N | 104°21'27.474"W | 0.00             |                     |
| 11117.00†  | 90.000             | 1.156          | 6450.00              | 4623.98           | 4533.29       | 912.42       | 40°23'26.881"N | 104°21'27.448"W | 0.00             |                     |
| 11217.00†  | 90.000             | 1.156          | 6450.00              | 4722.56           | 4633.27       | 914.43       | 40°23'27.869"N | 104°21'27.422"W | 0.00             |                     |
| 11317.00†  | 90.000             | 1.156          | 6450.00              | 4821.14           | 4733.25       | 916.45       | 40°23'28.857"N | 104°21'27.396"W | 0.00             |                     |
| 11383.77   | 90.000             | 1.156          | 6450.00 <sup>2</sup> | 4886.96           | 4800.00       | 917.80       | 40°23'29.517"N | 104°21'27.379"W | 0.00             | End of Tangent (XS) |

| HOLE & CASING SECTIONS - Ref Wellbore: ANTELOPE Y44-19-18MRLNC PWB      Ref Wellpath: ANTELOPE Y44-19-18MRLNC PWP (REV-A.0) |                  |                |                  |                   |                 |                   |                   |                 |                 |
|---|------------------|----------------|------------------|-------------------|-----------------|-------------------|-------------------|-----------------|-----------------|
| String/Diameter   | Start MD<br>[ft] | End MD<br>[ft] | Interval<br>[ft] | Start TVD<br>[ft] | End TVD<br>[ft] | Start N/S<br>[ft] | Start E/W<br>[ft] | End N/S<br>[ft] | End E/W<br>[ft] |
| 9.625in Casing Surface  | 17.00            | 1550.00        | 1533.00          | 17.00             | 1550.00         | 0.00              | 0.00              | 0.00            | 0.00            |
| 8.5in Open Hole   | 1550.00          | 11385.70       | 9835.70          | 1550.00           | N/A             | 0.00              | 0.00              | N/A             | N/A             |

| TARGETS   |            |             |               |              |                      |                       |                |                 |         |
|---|------------|-------------|---------------|--------------|----------------------|-----------------------|----------------|-----------------|---------|
| Name  | MD<br>[ft] | TVD<br>[ft] | North<br>[ft] | East<br>[ft] | Grid East<br>[US ft] | Grid North<br>[US ft] | Latitude       | Longitude       | Shape   |
| SEC.18-T05N-R62W  |            | 0.00        | 0.00          | 0.00         | 3317343.70           | 1382714.21            | 40°22'42.085"N | 104°21'39.240"W | polygon |
|   |            |             |               |              |                      |                       |                |                 |         |
| SEC.19-T05N-R62W  |            | 0.00        | 0.00          | 0.00         | 3317343.70           | 1382714.21            | 40°22'42.085"N | 104°21'39.240"W | polygon |
|   |            |             |               |              |                      |                       |                |                 |         |
| 2) ANTELOPE Y44-19-18MRLNC BHL<br>(250'FSL & 285'FEL, SEC.18) | 11383.77   | 6450.00     | 4800.00       | 917.80       | 3318199.73           | 1387525.40            | 40°23'29.517"N | 104°21'27.379"W | point   |
|   |            |             |               |              |                      |                       |                |                 |         |
| 1) ANTELOPE Y44-19-18MRLNC LP<br>(470'FSL & 340'FEL, SEC.19)  | 6859.85    | 6450.00     | 277.00        | 826.55       | 3318166.59           | 1383001.79            | 40°22'44.822"N | 104°21'28.560"W | point   |
|   |            |             |               |              |                      |                       |                |                 |         |
| SEC.18/19-T05N-R62W (460'SETBACK)                             |            | 6475.00     | 0.00          | 0.00         | 3317343.70           | 1382714.21            | 40°22'42.085"N | 104°21'39.240"W | polygon |
|   |            |             |               |              |                      |                       |                |                 |         |

| SURVEY PROGRAM - Ref Wellbore: ANTELOPE Y44-19-18MRLNC PWB      Ref Wellpath: ANTELOPE Y44-19-18MRLNC PWP (REV-A.0) |                |  |                  |                             |
|---|----------------|--|------------------|-----------------------------|
| Start MD<br>[ft]  | End MD<br>[ft] | Positional Uncertainty Model   | Log Name/Comment | Wellbore                    |
| 17.00   | 1550.00        | Custom BHI NaviTrak (Standard Rotating+Axial Corr) (Rockies 0.03Gt model)    |                  | ANTELOPE Y44-19-18MRLNC PWB |
| 1550.00   | 11383.77       | Custom BHI AutoTrak Curve (Axial Corr, Short spacing) (Rockies 0.03Gt model) |                  | ANTELOPE Y44-19-18MRLNC PWB |



# Planned Wellpath Report

ANTELOPE Y44-19-18MRLNC PWP (REV-A.0)

Page 6 of 6



| REFERENCE WELLPATH IDENTIFICATION |                           |          |  |
|-----------------------------------|---------------------------|----------|--|
| Operator                          | BONANZA CREEK OIL COMPANY | Slot     | SLOT#01 ANTELOPE Y44-19-18MRLNC (225'FSL & 1168'FEL, SEC.19) |
| Area                              | COLORADO                  | Well     | ANTELOPE Y44-19-18MRLNC                                      |
| Field                             | WELD COUNTY               | Wellbore | ANTELOPE Y44-19-18MRLNC PWB                                  |
| Facility                          | SEC.19-T05N-R62W          |          |  |

| DESIGN COMMENTS |                    |                |             |                     |
|-----------------|--------------------|----------------|-------------|---------------------|
| MD<br>[ft]      | Inclination<br>[°] | Azimuth<br>[°] | TVD<br>[ft] | Comment             |
| 17.00           | 0.000              | 112.532        | 17.00       | Tie On              |
| 1700.00         | 0.000              | 112.532        | 1700.00     | End of Tangent      |
| 2257.72         | 11.154             | 112.532        | 2254.20     | End of Build (XS)   |
| 5919.41         | 11.154             | 112.532        | 5846.73     | End of Tangent (XS) |
| 6859.85         | 90.000             | 1.156          | 6450.00     | End of 3D Arc (XS)  |
| 11383.77        | 90.000             | 1.156          | 6450.00     | End of Tangent (XS) |