

Location:	COLORADO	Slot:	SLOT#06 ANTELOPE O34-19-18MRLNB (225'FSL & 1268'FEL, SEC.19)
Field:	WELD COUNTY	Well:	ANTELOPE O34-19-18MRLNB
Facility:	SEC.19-T05N-R62W	Wellbore:	ANTELOPE O34-19-18MRLNB PWB

Location:	COLORADO	Slot:	SLOT#06 ANTELOPE O34-19-18MRLNB (225'FSL & 1268'FEL, SEC.19)
Field:	WELD COUNTY	Well:	ANTELOPE O34-19-18MRLNB
Facility:	SEC.19-T05N-R62W	Wellbore:	ANTELOPE O34-19-18MRLNB PWB

Plot reference wellpath is ANTELOPE O34-19-18MRLNB PWP (REV-A.0)		Grid System: NAD83 / Lambert Colorado SP, Northern Zone (501), US feet
True vertical depths are referenced to RIG (17KB) (RKB)		* = Wellpath was transformed from a different geodetic datum
Measured depths are referenced to RIG (17KB) (RKB)		North Reference: True north
RIG (17KB) (RKB) to Mean Sea Level: 4675 feet		Scale: True distance
Mean Sea Level to Mud line (At Slot: SLOTR06 ANTELOPE O34-19-18MRLNB (225FSL & 1268FEL, SEC.19): 0 feet		Depths are in feet
Coordinates are in feet referenced to Slot		Created by: inginjane on 2018-01-10
		Database: Denver

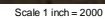
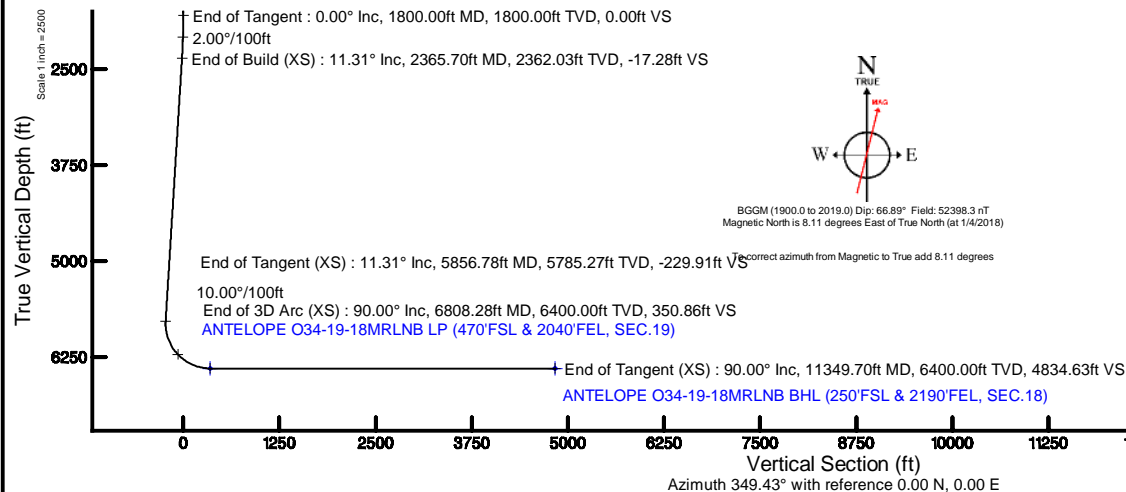
Facility Name			Grid East (US ft)	Grid North (US ft)	Latitude	Longitude
SEC.19-T05N-R62W			3317343.701	1382714.207	40°22'42.085"N	104°21'39.240"W
Slot	Local N (ft)	Local E (ft)	Grid East (US ft)	Grid North (US ft)	Latitude	Longitude
SLOT#06 ANTELOPE O34-19-18MRLN (225FSL & 1268FEL, SEC.19)	-2.53	-99.99	3317243.756	1382710.393	40°22'42.060"N	104°21'40.532"W
RIG (17FKB) (RKB) to Mud line (A Slot: SLOT#06 ANTELOPE O34-19-18MRLN (225FSL & 1268FEL, SEC.19))					4675ft	
Mean Sea Level to Mud line (A Slot: SLOT#06 ANTELOPE O34-19-18MRLN (225FSL & 1268FEL, SEC.19))					0ft	
RIG (17FKB) (RKB) to Mean Sea Level					4675ft	

Design Comment	MD (ft)	Inc (°)	Az (°)	TVD (ft)	Local N (ft)	Local E (ft)	DLS (°/100ft)	VS (ft)
Tie On	17.00	0.000	241.339	17.00	0.00	0.00	0.00	0.00
End of Tangent	1800.00	0.000	241.339	1800.00	0.00	0.00	0.00	0.00
End of Build (XS)	2365.70	11.314	241.339	2362.03	-26.70	-48.85	2.00	-17.28
End of Tangent (XS)	5856.78	11.314	241.339	5785.27	-355.20	-649.83	0.00	-229.91
End of 3D Arc (XS)	6808.28	90.000	358.564	6400.00	212.53	-773.46	10.00	350.86
End of Tangent (XS)	11349.70	90.000	358.564	6400.00	4752.53	-887.23	0.00	4834.63

Name	Start MD (ft)	End MD (ft)	Interval (ft)	Start TVD (ft)	End TVD (ft)	Start Local N (ft)	Start Local E (ft)	End Local N (ft)	End Local E (ft)	Wellbore
9.625in Casing Surface	17.00	1550.00	1533.00	17.00	1550.00	0.00	0.00	0.00	0.00	ANTELOPE 034-19-18MRNB PWB
8.5in Open Hole	1550.00	11349.70	9799.70	1550.00	6400.00	0.00	0.00	4752.53	-887.23	ANTELOPE 034-19-18MRNB PWB

Start MD (ft)	End MD (ft)	Tool	Model	Log Name/Comment	Wellbore
17.00	1550.00	BHI NavTrak	Custom BHI NavTrak (Standard Rotating+Axial Cor) (Rockies 0.03Gr model)		ANTELOPE 034-19-18MR/LNB PWB
1550.00	11349.70	BHI AutoTrak Curve	Custom BHI AutoTrak Curve (Axial Cor, Short spacing) (Rockies 0.03Gr model)		ANTELOPE 034-19-18MR/LNB PWB

MD (ft)	Inc (°)	Az (°)	TVD (ft)	Local N (ft)	Local E (ft)	Grid East (US ft)	Grid North (US ft)	Latitude	Longitude
11349.70	90.000	358.564	6400.00	4752.53	-887.23	3316295.61	1387450.93	40°23'29.023"N	104°21'51.998"W





Planned Wellpath Report

ANTELOPE O34-19-18MRLNB PWP (REV-A.0)

Page 1 of 6



REFERENCE WELLPATH IDENTIFICATION

Operator	BONANZA CREEK OIL COMPANY	Slot	SLOT#06 ANTELOPE O34-19-18MRLNB (225'FSL & 1268'FEL, SEC.19)
Area	COLORADO	Well	ANTELOPE O34-19-18MRLNB
Field	WELD COUNTY	Wellbore	ANTELOPE O34-19-18MRLNB PWB
Facility	SEC.19-T05N-R62W		

REPORT SETUP INFORMATION

Projection System	NAD83 / Lambert Colorado SP, Northern Zone (501), US feet	Software System	WellArchitect® 5.0
North Reference	True	User	Ingmjmr
Scale	0.999959	Report Generated	1/10/2018 at 12:13:28 PM
Convergence at slot	0.74° East	Database/Source file	Denver/ANTELOPE_O34-19-18MRLNB_PWP__REV-A.0_.xml

WELLPATH LOCATION

	Local coordinates		Grid coordinates		Geographic coordinates	
	North[ft]	East[ft]	Easting[US ft]	Northing[US ft]	Latitude	Longitude
Slot Location	-2.53	-99.99	3317243.76	1382710.39	40°22'42.060"N	104°21'40.532"W
Facility Reference Pt			3317343.70	1382714.21	40°22'42.085"N	104°21'39.240"W
Field Reference Pt			3224525.77	1254425.87	40°01'44.400"N	104°41'53.556"W

WELLPATH DATUM

Calculation method	Minimum curvature	RIG (17'KB) (RKB) to Facility Vertical Datum	4675.00ft
Horizontal Reference Pt	Slot	RIG (17'KB) (RKB) to Mean Sea Level	4675.00ft
Vertical Reference Pt	RIG (17'KB) (RKB)	RIG (17'KB) (RKB) to Mud Line at Slot (SLOT#06 ANTELOPE O34-19-18MRLNB (225'FSL & 1268'FEL, SEC.19))	4675.00ft
MD Reference Pt	RIG (17'KB) (RKB)	Section Origin	N 0.00, E 0.00 ft
Field Vertical Reference	Mean Sea Level	Section Azimuth	349.43°



Planned Wellpath Report

ANTELOPE O34-19-18MRLNB PWP (REV-A.0)

Page 2 of 6



REFERENCE WELLPATH IDENTIFICATION			
Operator	BONANZA CREEK OIL COMPANY	Slot	SLOT#06 ANTELOPE O34-19-18MRLNB (225'FSL & 1268'FEL, SEC.19)
Area	COLORADO	Well	ANTELOPE O34-19-18MRLNB
Field	WELD COUNTY	Wellbore	ANTELOPE O34-19-18MRLNB PWB
Facility	SEC.19-T05N-R62W		

WELLPATH DATA (120 stations) † = interpolated/extrapolated station										
MD [ft]	Inclination [°]	Azimuth [°]	TVD [ft]	Vert Sect [ft]	North [ft]	East [ft]	Latitude	Longitude	DLS [°/100ft]	Comments
0.00†	0.000	241.339	0.00	0.00	0.00	0.00	40°22'42.060"N	104°21'40.532"W	0.00	
17.00	0.000	241.339	17.00	0.00	0.00	0.00	40°22'42.060"N	104°21'40.532"W	0.00	Tie On
117.00†	0.000	241.339	117.00	0.00	0.00	0.00	40°22'42.060"N	104°21'40.532"W	0.00	
217.00†	0.000	241.339	217.00	0.00	0.00	0.00	40°22'42.060"N	104°21'40.532"W	0.00	
317.00†	0.000	241.339	317.00	0.00	0.00	0.00	40°22'42.060"N	104°21'40.532"W	0.00	
417.00†	0.000	241.339	417.00	0.00	0.00	0.00	40°22'42.060"N	104°21'40.532"W	0.00	
517.00†	0.000	241.339	517.00	0.00	0.00	0.00	40°22'42.060"N	104°21'40.532"W	0.00	
617.00†	0.000	241.339	617.00	0.00	0.00	0.00	40°22'42.060"N	104°21'40.532"W	0.00	
717.00†	0.000	241.339	717.00	0.00	0.00	0.00	40°22'42.060"N	104°21'40.532"W	0.00	
817.00†	0.000	241.339	817.00	0.00	0.00	0.00	40°22'42.060"N	104°21'40.532"W	0.00	
917.00†	0.000	241.339	917.00	0.00	0.00	0.00	40°22'42.060"N	104°21'40.532"W	0.00	
1017.00†	0.000	241.339	1017.00	0.00	0.00	0.00	40°22'42.060"N	104°21'40.532"W	0.00	
1117.00†	0.000	241.339	1117.00	0.00	0.00	0.00	40°22'42.060"N	104°21'40.532"W	0.00	
1217.00†	0.000	241.339	1217.00	0.00	0.00	0.00	40°22'42.060"N	104°21'40.532"W	0.00	
1317.00†	0.000	241.339	1317.00	0.00	0.00	0.00	40°22'42.060"N	104°21'40.532"W	0.00	
1417.00†	0.000	241.339	1417.00	0.00	0.00	0.00	40°22'42.060"N	104°21'40.532"W	0.00	
1517.00†	0.000	241.339	1517.00	0.00	0.00	0.00	40°22'42.060"N	104°21'40.532"W	0.00	
1617.00†	0.000	241.339	1617.00	0.00	0.00	0.00	40°22'42.060"N	104°21'40.532"W	0.00	
1717.00†	0.000	241.339	1717.00	0.00	0.00	0.00	40°22'42.060"N	104°21'40.532"W	0.00	
1800.00	0.000	241.339	1800.00	0.00	0.00	0.00	40°22'42.060"N	104°21'40.532"W	0.00	End of Tangent
1817.00†	0.340	241.339	1817.00	-0.02	-0.02	-0.04	40°22'42.060"N	104°21'40.533"W	2.00	
1917.00†	2.340	241.339	1916.97	-0.74	-1.15	-2.10	40°22'42.049"N	104°21'40.559"W	2.00	
2017.00†	4.340	241.339	2016.79	-2.55	-3.94	-7.21	40°22'42.021"N	104°21'40.625"W	2.00	
2117.00†	6.340	241.339	2116.35	-5.44	-8.40	-15.37	40°22'41.977"N	104°21'40.731"W	2.00	
2217.00†	8.340	241.339	2215.53	-9.41	-14.53	-26.58	40°22'41.916"N	104°21'40.875"W	2.00	
2317.00†	10.340	241.339	2314.20	-14.44	-22.31	-40.82	40°22'41.839"N	104°21'41.059"W	2.00	
2365.70	11.314	241.339	2362.03	-17.28	-26.70	-48.85	40°22'41.796"N	104°21'41.163"W	2.00	End of Build (XS)
2417.00†	11.314	241.339	2412.33	-20.41	-31.53	-57.68	40°22'41.748"N	104°21'41.277"W	0.00	
2517.00†	11.314	241.339	2510.39	-26.50	-40.94	-74.90	40°22'41.655"N	104°21'41.500"W	0.00	
2617.00†	11.314	241.339	2608.45	-32.59	-50.35	-92.11	40°22'41.562"N	104°21'41.722"W	0.00	



Planned Wellpath Report

ANTELOPE O34-19-18MRLNB PWP (REV-A.0)

Page 3 of 6



REFERENCE WELLPATH IDENTIFICATION			
Operator	BONANZA CREEK OIL COMPANY	Slot	SLOT#06 ANTELOPE O34-19-18MRLNB (225'FSL & 1268'FEL, SEC.19)
Area	COLORADO	Well	ANTELOPE O34-19-18MRLNB
Field	WELD COUNTY	Wellbore	ANTELOPE O34-19-18MRLNB PWB
Facility	SEC.19-T05N-R62W		

WELLPATH DATA (120 stations) † = interpolated/extrapolated station										
MD [ft]	Inclination [°]	Azimuth [°]	TVD [ft]	Vert Sect [ft]	North [ft]	East [ft]	Latitude	Longitude	DLS [°/100ft]	Comments
2717.00†	11.314	241.339	2706.50	-38.68	-59.76	-109.33	40°22'41.469"N	104°21'41.945"W	0.00	
2817.00†	11.314	241.339	2804.56	-44.77	-69.17	-126.54	40°22'41.377"N	104°21'42.167"W	0.00	
2917.00†	11.314	241.339	2902.62	-50.86	-78.58	-143.76	40°22'41.284"N	104°21'42.389"W	0.00	
3017.00†	11.314	241.339	3000.67	-56.95	-87.99	-160.97	40°22'41.191"N	104°21'42.612"W	0.00	
3117.00†	11.314	241.339	3098.73	-63.04	-97.40	-178.18	40°22'41.098"N	104°21'42.834"W	0.00	
3217.00†	11.314	241.339	3196.79	-69.13	-106.81	-195.40	40°22'41.005"N	104°21'43.057"W	0.00	
3317.00†	11.314	241.339	3294.84	-75.22	-116.22	-212.61	40°22'40.912"N	104°21'43.279"W	0.00	
3417.00†	11.314	241.339	3392.90	-81.31	-125.63	-229.83	40°22'40.819"N	104°21'43.502"W	0.00	
3517.00†	11.314	241.339	3490.96	-87.41	-135.04	-247.04	40°22'40.726"N	104°21'43.724"W	0.00	
3617.00†	11.314	241.339	3589.01	-93.50	-144.44	-264.26	40°22'40.633"N	104°21'43.947"W	0.00	
3717.00†	11.314	241.339	3687.07	-99.59	-153.85	-281.47	40°22'40.540"N	104°21'44.169"W	0.00	
3817.00†	11.314	241.339	3785.13	-105.68	-163.26	-298.69	40°22'40.447"N	104°21'44.391"W	0.00	
3917.00†	11.314	241.339	3883.18	-111.77	-172.67	-315.90	40°22'40.354"N	104°21'44.614"W	0.00	
4017.00†	11.314	241.339	3981.24	-117.86	-182.08	-333.12	40°22'40.261"N	104°21'44.836"W	0.00	
4117.00†	11.314	241.339	4079.30	-123.95	-191.49	-350.33	40°22'40.168"N	104°21'45.059"W	0.00	
4217.00†	11.314	241.339	4177.35	-130.04	-200.90	-367.55	40°22'40.075"N	104°21'45.281"W	0.00	
4317.00†	11.314	241.339	4275.41	-136.13	-210.31	-384.76	40°22'39.982"N	104°21'45.504"W	0.00	
4417.00†	11.314	241.339	4373.47	-142.22	-219.72	-401.98	40°22'39.889"N	104°21'45.726"W	0.00	
4517.00†	11.314	241.339	4471.52	-148.31	-229.13	-419.19	40°22'39.796"N	104°21'45.948"W	0.00	
4617.00†	11.314	241.339	4569.58	-154.40	-238.54	-436.40	40°22'39.703"N	104°21'46.171"W	0.00	
4717.00†	11.314	241.339	4667.64	-160.49	-247.95	-453.62	40°22'39.610"N	104°21'46.393"W	0.00	
4817.00†	11.314	241.339	4765.69	-166.58	-257.36	-470.83	40°22'39.517"N	104°21'46.616"W	0.00	
4917.00†	11.314	241.339	4863.75	-172.67	-266.77	-488.05	40°22'39.424"N	104°21'46.838"W	0.00	
5017.00†	11.314	241.339	4961.81	-178.77	-276.18	-505.26	40°22'39.331"N	104°21'47.061"W	0.00	
5117.00†	11.314	241.339	5059.86	-184.86	-285.59	-522.48	40°22'39.238"N	104°21'47.283"W	0.00	
5217.00†	11.314	241.339	5157.92	-190.95	-295.00	-539.69	40°22'39.145"N	104°21'47.505"W	0.00	
5317.00†	11.314	241.339	5255.98	-197.04	-304.41	-556.91	40°22'39.052"N	104°21'47.728"W	0.00	
5417.00†	11.314	241.339	5354.03	-203.13	-313.82	-574.12	40°22'38.959"N	104°21'47.950"W	0.00	
5517.00†	11.314	241.339	5452.09	-209.22	-323.23	-591.34	40°22'38.866"N	104°21'48.173"W	0.00	
5617.00†	11.314	241.339	5550.15	-215.31	-332.64	-608.55	40°22'38.773"N	104°21'48.395"W	0.00	



Planned Wellpath Report

ANTELOPE O34-19-18MRLNB PWP (REV-A.0)

Page 4 of 6



REFERENCE WELLPATH IDENTIFICATION			
Operator	BONANZA CREEK OIL COMPANY	Slot	SLOT#06 ANTELOPE O34-19-18MRLNB (225'FSL & 1268'FEL, SEC.19)
Area	COLORADO	Well	ANTELOPE O34-19-18MRLNB
Field	WELD COUNTY	Wellbore	ANTELOPE O34-19-18MRLNB PWB
Facility	SEC.19-T05N-R62W		

WELLPATH DATA (120 stations) † = interpolated/extrapolated station										
MD [ft]	Inclination [°]	Azimuth [°]	TVD [ft]	Vert Sect [ft]	North [ft]	East [ft]	Latitude	Longitude	DLS [°/100ft]	Comments
5717.00†	11.314	241.339	5648.20	-221.40	-342.05	-625.77	40°22'38.680"N	104°21'48.618"W	0.00	
5817.00†	11.314	241.339	5746.26	-227.49	-351.46	-642.98	40°22'38.587"N	104°21'48.840"W	0.00	
5856.78	11.314	241.339	5785.27	-229.91	-355.20	-649.83	40°22'38.550"N	104°21'48.928"W	0.00	End of Tangent (XS)
5917.00†	10.125	273.533	5844.49	-230.46	-357.71	-660.31	40°22'38.525"N	104°21'49.064"W	10.00	
6017.00†	14.790	316.201	5942.30	-217.60	-347.93	-677.96	40°22'38.622"N	104°21'49.292"W	10.00	
6117.00†	23.084	333.893	6036.88	-187.96	-321.05	-695.46	40°22'38.887"N	104°21'49.518"W	10.00	
6217.00†	32.323	342.235	6125.36	-142.44	-277.87	-712.29	40°22'39.314"N	104°21'49.736"W	10.00	
6317.00†	41.886	347.122	6205.03	-82.40	-219.72	-727.93	40°22'39.889"N	104°21'49.938"W	10.00	
6417.00†	51.589	350.455	6273.50	-9.69	-148.36	-741.90	40°22'40.594"N	104°21'50.118"W	10.00	
6517.00†	61.365	352.990	6328.66	73.49	-65.96	-753.78	40°22'41.408"N	104°21'50.272"W	10.00	
6617.00†	71.179	355.088	6368.86	164.62	24.98	-763.21	40°22'42.307"N	104°21'50.394"W	10.00	
6717.00†	81.015	356.952	6392.86	260.92	121.70	-769.91	40°22'43.262"N	104°21'50.480"W	10.00	
6808.28	90.000	358.564	6400.00†	350.86	212.53	-773.46	40°22'44.160"N	104°21'50.526"W	10.00	End of 3D Arc (XS)
6817.00†	90.000	358.564	6400.00	359.47	221.25	-773.67	40°22'44.246"N	104°21'50.529"W	0.00	
6917.00†	90.000	358.564	6400.00	458.20	321.22	-776.18	40°22'45.234"N	104°21'50.561"W	0.00	
7017.00†	90.000	358.564	6400.00	556.93	421.19	-778.69	40°22'46.222"N	104°21'50.594"W	0.00	
7117.00†	90.000	358.564	6400.00	655.66	521.15	-781.19	40°22'47.210"N	104°21'50.626"W	0.00	
7217.00†	90.000	358.564	6400.00	754.39	621.12	-783.70	40°22'48.198"N	104°21'50.659"W	0.00	
7317.00†	90.000	358.564	6400.00	853.12	721.09	-786.20	40°22'49.185"N	104°21'50.691"W	0.00	
7417.00†	90.000	358.564	6400.00	951.86	821.06	-788.71	40°22'50.173"N	104°21'50.723"W	0.00	
7517.00†	90.000	358.564	6400.00	1050.59	921.03	-791.21	40°22'51.161"N	104°21'50.756"W	0.00	
7617.00†	90.000	358.564	6400.00	1149.32	1021.00	-793.72	40°22'52.149"N	104°21'50.788"W	0.00	
7717.00†	90.000	358.564	6400.00	1248.05	1120.97	-796.22	40°22'53.137"N	104°21'50.821"W	0.00	
7817.00†	90.000	358.564	6400.00	1346.78	1220.93	-798.73	40°22'54.125"N	104°21'50.853"W	0.00	
7917.00†	90.000	358.564	6400.00	1445.51	1320.90	-801.23	40°22'55.113"N	104°21'50.885"W	0.00	
8017.00†	90.000	358.564	6400.00	1544.24	1420.87	-803.74	40°22'56.100"N	104°21'50.918"W	0.00	
8117.00†	90.000	358.564	6400.00	1642.97	1520.84	-806.24	40°22'57.088"N	104°21'50.950"W	0.00	
8217.00†	90.000	358.564	6400.00	1741.70	1620.81	-808.75	40°22'58.076"N	104°21'50.983"W	0.00	
8317.00†	90.000	358.564	6400.00	1840.43	1720.78	-811.25	40°22'59.064"N	104°21'51.015"W	0.00	
8417.00†	90.000	358.564	6400.00	1939.16	1820.75	-813.76	40°23'00.052"N	104°21'51.048"W	0.00	



Planned Wellpath Report

ANTELOPE O34-19-18MRLNB PWP (REV-A.0)

Page 5 of 6



REFERENCE WELLPATH IDENTIFICATION			
Operator	BONANZA CREEK OIL COMPANY	Slot	SLOT#06 ANTELOPE O34-19-18MRLNB (225'FSL & 1268'FEL, SEC.19)
Area	COLORADO	Well	ANTELOPE O34-19-18MRLNB
Field	WELD COUNTY	Wellbore	ANTELOPE O34-19-18MRLNB PWB
Facility	SEC.19-T05N-R62W		

WELLPATH DATA (120 stations) † = interpolated/extrapolated station										
MD [ft]	Inclination [°]	Azimuth [°]	TVD [ft]	Vert Sect [ft]	North [ft]	East [ft]	Latitude	Longitude	DLS [°/100ft]	Comments
8517.00†	90.000	358.564	6400.00	2037.89	1920.71	-816.26	40°23'01.040"N	104°21'51.080"W	0.00	
8617.00†	90.000	358.564	6400.00	2136.62	2020.68	-818.77	40°23'02.028"N	104°21'51.112"W	0.00	
8717.00†	90.000	358.564	6400.00	2235.35	2120.65	-821.28	40°23'03.015"N	104°21'51.145"W	0.00	
8817.00†	90.000	358.564	6400.00	2334.08	2220.62	-823.78	40°23'04.003"N	104°21'51.177"W	0.00	
8917.00†	90.000	358.564	6400.00	2432.81	2320.59	-826.29	40°23'04.991"N	104°21'51.210"W	0.00	
9017.00†	90.000	358.564	6400.00	2531.54	2420.56	-828.79	40°23'05.979"N	104°21'51.242"W	0.00	
9117.00†	90.000	358.564	6400.00	2630.28	2520.53	-831.30	40°23'06.967"N	104°21'51.274"W	0.00	
9217.00†	90.000	358.564	6400.00	2729.01	2620.49	-833.80	40°23'07.955"N	104°21'51.307"W	0.00	
9317.00†	90.000	358.564	6400.00	2827.74	2720.46	-836.31	40°23'08.943"N	104°21'51.339"W	0.00	
9417.00†	90.000	358.564	6400.00	2926.47	2820.43	-838.81	40°23'09.930"N	104°21'51.372"W	0.00	
9517.00†	90.000	358.564	6400.00	3025.20	2920.40	-841.32	40°23'10.918"N	104°21'51.404"W	0.00	
9617.00†	90.000	358.564	6400.00	3123.93	3020.37	-843.82	40°23'11.906"N	104°21'51.437"W	0.00	
9717.00†	90.000	358.564	6400.00	3222.66	3120.34	-846.33	40°23'12.894"N	104°21'51.469"W	0.00	
9817.00†	90.000	358.564	6400.00	3321.39	3220.31	-848.83	40°23'13.882"N	104°21'51.501"W	0.00	
9917.00†	90.000	358.564	6400.00	3420.12	3320.27	-851.34	40°23'14.870"N	104°21'51.534"W	0.00	
10017.00†	90.000	358.564	6400.00	3518.85	3420.24	-853.84	40°23'15.858"N	104°21'51.566"W	0.00	
10117.00†	90.000	358.564	6400.00	3617.58	3520.21	-856.35	40°23'16.845"N	104°21'51.599"W	0.00	
10217.00†	90.000	358.564	6400.00	3716.31	3620.18	-858.85	40°23'17.833"N	104°21'51.631"W	0.00	
10317.00†	90.000	358.564	6400.00	3815.04	3720.15	-861.36	40°23'18.821"N	104°21'51.664"W	0.00	
10417.00†	90.000	358.564	6400.00	3913.77	3820.12	-863.87	40°23'19.809"N	104°21'51.696"W	0.00	
10517.00†	90.000	358.564	6400.00	4012.50	3920.09	-866.37	40°23'20.797"N	104°21'51.728"W	0.00	
10617.00†	90.000	358.564	6400.00	4111.23	4020.06	-868.88	40°23'21.785"N	104°21'51.761"W	0.00	
10717.00†	90.000	358.564	6400.00	4209.96	4120.02	-871.38	40°23'22.773"N	104°21'51.793"W	0.00	
10817.00†	90.000	358.564	6400.00	4308.70	4219.99	-873.89	40°23'23.760"N	104°21'51.826"W	0.00	
10917.00†	90.000	358.564	6400.00	4407.43	4319.96	-876.39	40°23'24.748"N	104°21'51.858"W	0.00	
11017.00†	90.000	358.564	6400.00	4506.16	4419.93	-878.90	40°23'25.736"N	104°21'51.890"W	0.00	
11117.00†	90.000	358.564	6400.00	4604.89	4519.90	-881.40	40°23'26.724"N	104°21'51.923"W	0.00	
11217.00†	90.000	358.564	6400.00	4703.62	4619.87	-883.91	40°23'27.712"N	104°21'51.955"W	0.00	
11317.00†	90.000	358.564	6400.00	4802.35	4719.84	-886.41	40°23'28.700"N	104°21'51.988"W	0.00	
11349.70	90.000	358.564	6400.00 ²	4834.63	4752.53	-887.23	40°23'29.023"N	104°21'51.998"W	0.00	End of Tangent (XS)

HOLE & CASING SECTIONS - Ref Wellbore: ANTELOPE 034-19-18MRLNB PWB Ref Wellpath: ANTELOPE 034-19-18MRLNB PWP (REV-A.0)									
String/Diameter	Start MD [ft]	End MD [ft]	Interval [ft]	Start TVD [ft]	End TVD [ft]	Start N/S [ft]	Start E/W [ft]	End N/S [ft]	End E/W [ft]
9.625in Casing Surface	17.00	1550.00	1533.00	17.00	1550.00	0.00	0.00	0.00	0.00
8.5in Open Hole	1550.00	11349.70	9799.70	1550.00	6400.00	0.00	0.00	4752.53	-887.23

TARGETS									
Name	MD [ft]	TVD [ft]	North [ft]	East [ft]	Grid East [US ft]	Grid North [US ft]	Latitude	Longitude	Shape
SEC.18-T05N-R62W		0.00	2.53	99.99	3317343.70	1382714.21	40°22'42.085"N	104°21'39.240"W	polygon
SEC.19-T05N-R62W		0.00	2.53	99.99	3317343.70	1382714.21	40°22'42.085"N	104°21'39.240"W	polygon
2) ANTELOPE 034-19-18MRLNB BHL (250'FSL & 2190'FEL, SEC.18)	11349.70	6400.00	4752.53	-887.23	3316295.61	1387450.93	40°23'29.023"N	104°21'51.998"W	point
1) ANTELOPE 034-19-18MRLNB LP (470'FSL & 2040'FEL, SEC.19)	6808.28	6400.00	212.53	-773.46	3316467.67	1382912.96	40°22'44.160"N	104°21'50.526"W	point
SEC.18/19-T05N-R62W (460'SETBACK)		6475.00	2.53	99.99	3317343.70	1382714.21	40°22'42.085"N	104°21'39.240"W	polygon

SURVEY PROGRAM - Ref Wellbore: ANTELOPE 034-19-18MRLNB PWB Ref Wellpath: ANTELOPE 034-19-18MRLNB PWP (REV-A.0)				
Start MD [ft]	End MD [ft]	Positional Uncertainty Model	Log Name/Comment	Wellbore
17.00	1550.00	Custom BHI NaviTrak (Standard Rotating+Axial Corr) (Rockies 0.03Gt model)		ANTELOPE 034-19-18MRLNB PWB
1550.00	11349.70	Custom BHI AutoTrak Curve (Axial Corr, Short spacing) (Rockies 0.03Gt model)		ANTELOPE 034-19-18MRLNB PWB



Planned Wellpath Report

ANTELOPE 034-19-18MRLNB PWP (REV-A.0)

Page 6 of 6



REFERENCE WELLPATH IDENTIFICATION			
Operator	BONANZA CREEK OIL COMPANY	Slot	SLOT#06 ANTELOPE 034-19-18MRLNB (225'FSL & 1268'FEL, SEC.19)
Area	COLORADO	Well	ANTELOPE 034-19-18MRLNB
Field	WELD COUNTY	Wellbore	ANTELOPE 034-19-18MRLNB PWB
Facility	SEC.19-T05N-R62W		

DESIGN COMMENTS				
MD [ft]	Inclination [°]	Azimuth [°]	TVD [ft]	Comment
17.00	0.000	241.339	17.00	Tie On
1800.00	0.000	241.339	1800.00	End of Tangent
2365.70	11.314	241.339	2362.03	End of Build (XS)
5856.78	11.314	241.339	5785.27	End of Tangent (XS)
6808.28	90.000	358.564	6400.00	End of 3D Arc (XS)
11349.70	90.000	358.564	6400.00	End of Tangent (XS)