

Location:	COLORADO	Slot:	SLOT#08 ANTELOPE 24-19-18XRLNB (225'FSL & 1308'FEL, SEC.19)
Field:	WELD COUNTY	Well:	ANTELOPE 24-19-18XRLNB
Facility:	SEC.19-T05N-R62W	Wellbore:	ANTELOPE 24-19-18XRLNB PWB

Location:	COLORADO	Slot:	SLOT#08 ANTELOPE 24-19-18XRLNB (225'FSL & 1308'FEL, SEC.19)
Field:	WELD COUNTY	Well:	ANTELOPE 24-19-18XRLNB
Facility:	SEC.19-T05N-R62W	Wellbore:	ANTELOPE 24-19-18XRLNB PWB

Plot reference wellpath is ANTELOPE 24-19-18XRLNB PWP (REV-A.0)

True vertical depths are referenced to RIG (17KB) (RKB)

Measured depths are referenced to RIG (17KB) (RKB)

RIG (17KB) (RKB) to Mean Sea Level: 4675 feet

Mean Sea Level to Mud line (At Slot: SLOT#08 ANTELOPE 24-19-18XRLNB (225'FSL & 1308'FEL, SEC.19)): 0 feet

Coordinates are in feet referenced to Slot

[illegible]

Grid System: NAD83 / Lambert Colorado SP, Northern Zone (501), US feet

* = Wellpath was transformed from a different geodetic datum

North Reference: True north

Scale: True distance

Depths are in feet

Created by: ingmjmr on 2018-01-10

Database: Derver

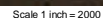
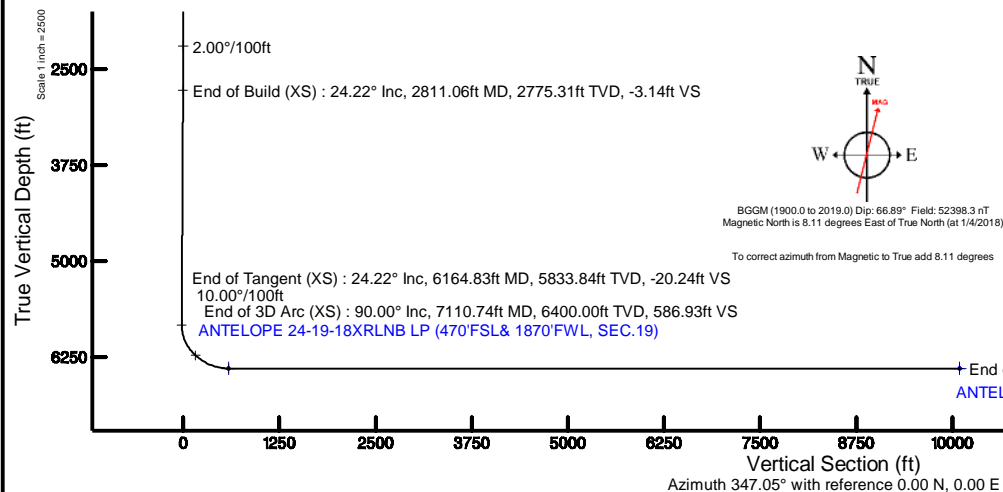
Facility Name			Grid East (US ft)	Grid North (US ft)	Latitude	Longitude
SEC.19-T05N-R62W			3317343.701	1382714.207	40°22'42.085"N	104°21'39.240"W
Slot	Local N (ft)	Local E (ft)	Grid East (US ft)	Grid North (US ft)	Latitude	Longitude
SLOT#08 ANTEPOLE 24-19-18XRLNB (225FSL & 1308FEL, SEC.19)	-3.64	-139.85	3317203.918	1382708.769	40°22'42.049"N	104°21'41.047"W
RIG (17Kb) (R0b) to Mud line (A Slot: SLOT#08 ANTEPOLE 24-19-18XRLNB (225FSL & 1308FEL, SEC.19))					4675ft	
Mean Sea Level to Mud line (A Slot: SLOT#08 ANTEPOLE 24-19-18XRLNB (225FSL & 1308FEL, SEC.19))					0ft	
RIG (17Kb) (R0b) to Mean Sea Level					4675ft	

Design Comment	MD (ft)	Inc (°)	Az (°)	TVD (ft)	Local N (ft)	Local E (ft)	DLS (°/100ft)	VS (ft)
Tie On	17.00	0.000	256.341	17.00	0.00	0.00	0.00	0.00
End of Tangent	1600.00	0.000	256.341	1600.00	0.00	0.00	0.00	0.00
End of Build (XS)	2811.06	24.221	256.341	2775.31	-59.56	-245.06	2.00	-3.14
End of Tangent (XS)	6164.83	24.221	256.341	5833.84	-384.48	-1582.07	0.00	-20.24
End of 3D Arc (XS)	7110.74	90.000	357.591	6400.00	175.63	-1855.65	10.00	586.93
End of Tangent (XS)	16784.29	90.000	357.591	6400.00	9840.63	-2262.31	0.00	10097.33

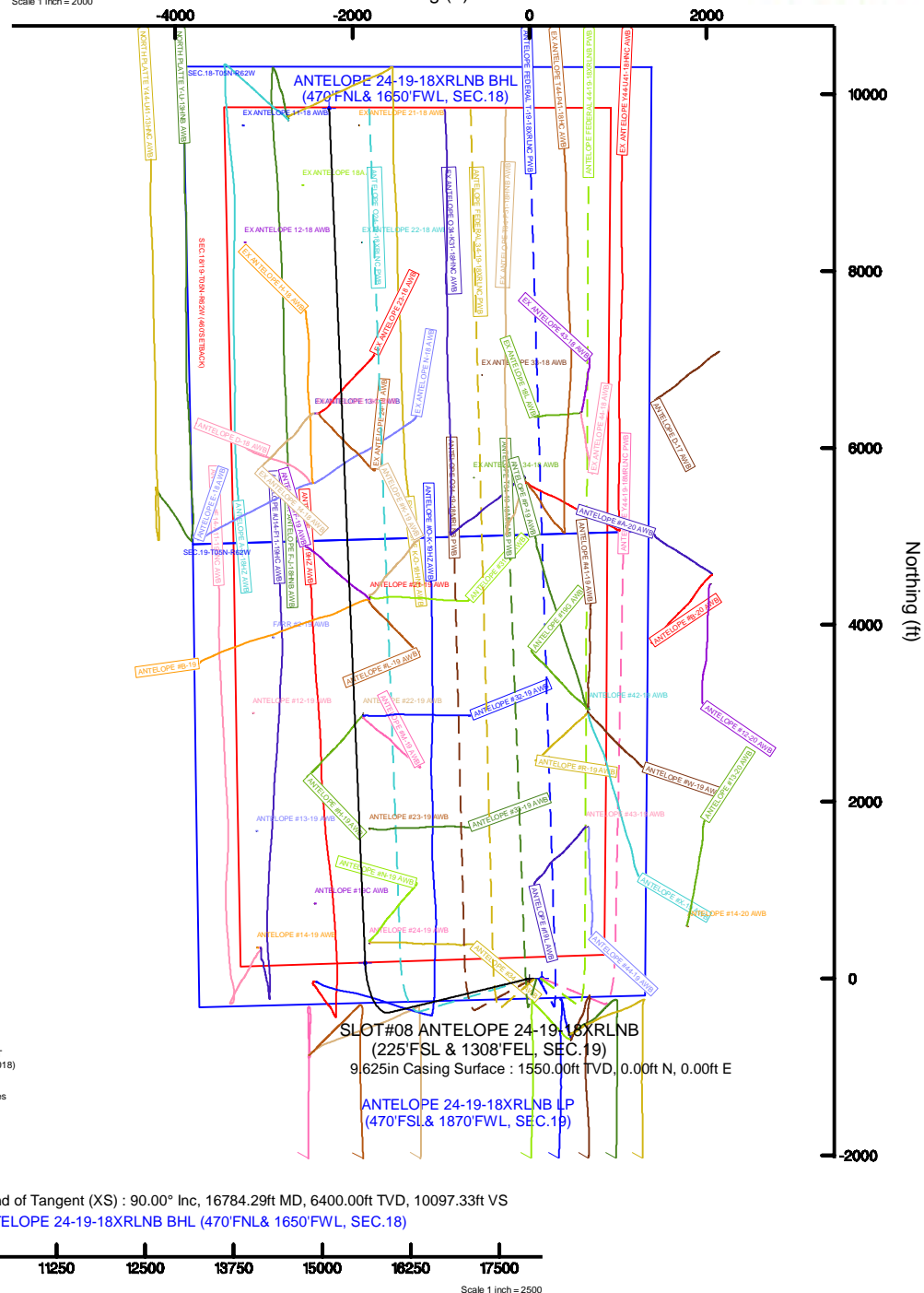
Name	Start MD (ft)	End MD (ft)	Interval (ft)	Start TVD (ft)	End TVD (ft)	Start Local N (ft)	Start Local E (ft)	End Local N (ft)	End Local E (ft)	Wellbore
9.625in Casing Surface	17.00	1550.00	1533.00	17.00	1550.00	0.00	0.00	0.00	0.00	ANTELOPE 24-19-18XRLNB PWB
8.5in Open Hole	1550.00	16784.29	15234.29	1550.00	N/A	0.00	0.00	N/A	N/A	ANTELOPE 24-19-18XRLNB PWB

Start MD (ft)	End MD (ft)	Tool	Model	Log Name/Comment	Wellbore
17.00	1550.00	BHI NavTrak	Custom BHI NavTrak (Standard Rotating+Axial Corr) (Rockies 0.03Gf model)		ANTELOPE 24-19-18XRLNB PWB
1550.00	16784.29	BHI AutoTrak Curve	Custom BHI AutoTrak Curve (Axial Corr, Short spacing) (Rockies 0.03Gf model)		ANTELOPE 24-19-18XRLNB PWB

MD (ft)	Inc (°)	Az (°)	TVD (ft)	Local N (ft)	Local E (ft)	Grid East (US ft)	Grid North (US ft)	Latitude	Longitude
16784.29	90.000	357.591	6400.00	9840.63	-2262.31	3314815.55	1392519.12	40°24'19.290"N	104°22'10.290"W



Easting (ft)





Planned Wellpath Report

ANTELOPE 24-19-18XRLNB PWP (REV-A.0)

Page 1 of 9



REFERENCE WELLPATH IDENTIFICATION

Operator	BONANZA CREEK OIL COMPANY	Slot	SLOT#08 ANTELOPE 24-19-18XRLNB (225'FSL & 1308'FEL, SEC.19)
Area	COLORADO	Well	ANTELOPE 24-19-18XRLNB
Field	WELD COUNTY	Wellbore	ANTELOPE 24-19-18XRLNB PWB
Facility	SEC.19-T05N-R62W		

REPORT SETUP INFORMATION

Projection System	NAD83 / Lambert Colorado SP, Northern Zone (501), US feet	Software System	WellArchitect® 5.0
North Reference	True	User	Ingmjmr
Scale	0.999959	Report Generated	1/10/2018 at 12:13:11 PM
Convergence at slot	0.74° East	Database/Source file	Denver/ANTELOPE_24-19-18XRLNB_PWP__REV-A.0_.xml

WELLPATH LOCATION

	Local coordinates		Grid coordinates		Geographic coordinates	
	North[ft]	East[ft]	Easting[US ft]	Northing[US ft]	Latitude	Longitude
Slot Location	-3.64	-139.85	3317203.92	1382708.77	40°22'42.049"N	104°21'41.047"W
Facility Reference Pt			3317343.70	1382714.21	40°22'42.085"N	104°21'39.240"W
Field Reference Pt			3224525.77	1254425.87	40°01'44.400"N	104°41'53.556"W

WELLPATH DATUM

Calculation method	Minimum curvature	RIG (17'KB) (RKB) to Facility Vertical Datum	4675.00ft
Horizontal Reference Pt	Slot	RIG (17'KB) (RKB) to Mean Sea Level	4675.00ft
Vertical Reference Pt	RIG (17'KB) (RKB)	RIG (17'KB) (RKB) to Mud Line at Slot (SLOT#08 ANTELOPE 24-19-18XRLNB (225'FSL & 1308'FEL, SEC.19))	4675.00ft
MD Reference Pt	RIG (17'KB) (RKB)	Section Origin	N 0.00, E 0.00 ft
Field Vertical Reference	Mean Sea Level	Section Azimuth	347.05°



Planned Wellpath Report

ANTELOPE 24-19-18XRLNB PWP (REV-A.0)

Page 2 of 9



REFERENCE WELLPATH IDENTIFICATION			
Operator	BONANZA CREEK OIL COMPANY	Slot	SLOT#08 ANTELOPE 24-19-18XRLNB (225'FSL & 1308'FEL, SEC.19)
Area	COLORADO	Well	ANTELOPE 24-19-18XRLNB
Field	WELD COUNTY	Wellbore	ANTELOPE 24-19-18XRLNB PWB
Facility	SEC.19-T05N-R62W		

WELLPATH DATA (174 stations) † = interpolated/extrapolated station										
MD [ft]	Inclination [°]	Azimuth [°]	TVD [ft]	Vert Sect [ft]	North [ft]	East [ft]	Latitude	Longitude	DLS [°/100ft]	Comments
0.00†	0.000	256.341	0.00	0.00	0.00	0.00	40°22'42.049"N	104°21'41.047"W	0.00	
17.00	0.000	256.341	17.00	0.00	0.00	0.00	40°22'42.049"N	104°21'41.047"W	0.00	Tie On
117.00†	0.000	256.341	117.00	0.00	0.00	0.00	40°22'42.049"N	104°21'41.047"W	0.00	
217.00†	0.000	256.341	217.00	0.00	0.00	0.00	40°22'42.049"N	104°21'41.047"W	0.00	
317.00†	0.000	256.341	317.00	0.00	0.00	0.00	40°22'42.049"N	104°21'41.047"W	0.00	
417.00†	0.000	256.341	417.00	0.00	0.00	0.00	40°22'42.049"N	104°21'41.047"W	0.00	
517.00†	0.000	256.341	517.00	0.00	0.00	0.00	40°22'42.049"N	104°21'41.047"W	0.00	
617.00†	0.000	256.341	617.00	0.00	0.00	0.00	40°22'42.049"N	104°21'41.047"W	0.00	
717.00†	0.000	256.341	717.00	0.00	0.00	0.00	40°22'42.049"N	104°21'41.047"W	0.00	
817.00†	0.000	256.341	817.00	0.00	0.00	0.00	40°22'42.049"N	104°21'41.047"W	0.00	
917.00†	0.000	256.341	917.00	0.00	0.00	0.00	40°22'42.049"N	104°21'41.047"W	0.00	
1017.00†	0.000	256.341	1017.00	0.00	0.00	0.00	40°22'42.049"N	104°21'41.047"W	0.00	
1117.00†	0.000	256.341	1117.00	0.00	0.00	0.00	40°22'42.049"N	104°21'41.047"W	0.00	
1217.00†	0.000	256.341	1217.00	0.00	0.00	0.00	40°22'42.049"N	104°21'41.047"W	0.00	
1317.00†	0.000	256.341	1317.00	0.00	0.00	0.00	40°22'42.049"N	104°21'41.047"W	0.00	
1417.00†	0.000	256.341	1417.00	0.00	0.00	0.00	40°22'42.049"N	104°21'41.047"W	0.00	
1517.00†	0.000	256.341	1517.00	0.00	0.00	0.00	40°22'42.049"N	104°21'41.047"W	0.00	
1600.00	0.000	256.341	1600.00	0.00	0.00	0.00	40°22'42.049"N	104°21'41.047"W	0.00	End of Tangent
1617.00†	0.340	256.341	1617.00	0.00	-0.01	-0.05	40°22'42.049"N	104°21'41.048"W	2.00	
1717.00†	2.340	256.341	1716.97	-0.03	-0.56	-2.32	40°22'42.043"N	104°21'41.077"W	2.00	
1817.00†	4.340	256.341	1816.79	-0.10	-1.94	-7.98	40°22'42.030"N	104°21'41.150"W	2.00	
1917.00†	6.340	256.341	1916.35	-0.22	-4.14	-17.03	40°22'42.008"N	104°21'41.267"W	2.00	
2017.00†	8.340	256.341	2015.53	-0.38	-7.15	-29.44	40°22'41.978"N	104°21'41.427"W	2.00	
2117.00†	10.340	256.341	2114.20	-0.58	-10.99	-45.21	40°22'41.940"N	104°21'41.631"W	2.00	
2217.00†	12.340	256.341	2212.24	-0.82	-15.63	-64.31	40°22'41.895"N	104°21'41.878"W	2.00	
2317.00†	14.340	256.341	2309.54	-1.11	-21.08	-86.73	40°22'41.841"N	104°21'42.168"W	2.00	
2417.00†	16.340	256.341	2405.97	-1.44	-27.33	-112.44	40°22'41.779"N	104°21'42.500"W	2.00	
2517.00†	18.340	256.341	2501.42	-1.81	-34.36	-141.40	40°22'41.709"N	104°21'42.874"W	2.00	
2617.00†	20.340	256.341	2595.77	-2.22	-42.18	-173.58	40°22'41.632"N	104°21'43.290"W	2.00	
2717.00†	22.340	256.341	2688.91	-2.67	-50.78	-208.94	40°22'41.547"N	104°21'43.747"W	2.00	



Planned Wellpath Report

ANTELOPE 24-19-18XRLNB PWP (REV-A.0)

Page 3 of 9



REFERENCE WELLPATH IDENTIFICATION			
Operator	BONANZA CREEK OIL COMPANY	Slot	SLOT#08 ANTELOPE 24-19-18XRLNB (225'FSL & 1308'FEL, SEC.19)
Area	COLORADO	Well	ANTELOPE 24-19-18XRLNB
Field	WELD COUNTY	Wellbore	ANTELOPE 24-19-18XRLNB PWB
Facility	SEC.19-T05N-R62W		

WELLPATH DATA (174 stations) † = interpolated/extrapolated station										
MD [ft]	Inclination [°]	Azimuth [°]	TVD [ft]	Vert Sect [ft]	North [ft]	East [ft]	Latitude	Longitude	DLS [°/100ft]	Comments
2811.06	24.221	256.341	2775.31	-3.14	-59.56	-245.06	40°22'41.460"N	104°21'44.213"W	2.00	End of Build (XS)
2817.00†	24.221	256.341	2780.73	-3.17	-60.13	-247.43	40°22'41.455"N	104°21'44.244"W	0.00	
2917.00†	24.221	256.341	2871.92	-3.68	-69.82	-287.29	40°22'41.359"N	104°21'44.759"W	0.00	
3017.00†	24.221	256.341	2963.12	-4.19	-79.51	-327.16	40°22'41.263"N	104°21'45.274"W	0.00	
3117.00†	24.221	256.341	3054.32	-4.70	-89.20	-367.02	40°22'41.168"N	104°21'45.789"W	0.00	
3217.00†	24.221	256.341	3145.51	-5.21	-98.88	-406.89	40°22'41.072"N	104°21'46.305"W	0.00	
3317.00†	24.221	256.341	3236.71	-5.72	-108.57	-446.76	40°22'40.976"N	104°21'46.820"W	0.00	
3417.00†	24.221	256.341	3327.91	-6.23	-118.26	-486.62	40°22'40.880"N	104°21'47.335"W	0.00	
3517.00†	24.221	256.341	3419.10	-6.74	-127.95	-526.49	40°22'40.785"N	104°21'47.850"W	0.00	
3617.00†	24.221	256.341	3510.30	-7.25	-137.64	-566.35	40°22'40.689"N	104°21'48.365"W	0.00	
3717.00†	24.221	256.341	3601.50	-7.76	-147.33	-606.22	40°22'40.593"N	104°21'48.880"W	0.00	
3817.00†	24.221	256.341	3692.69	-8.27	-157.01	-646.08	40°22'40.497"N	104°21'49.395"W	0.00	
3917.00†	24.221	256.341	3783.89	-8.78	-166.70	-685.95	40°22'40.402"N	104°21'49.910"W	0.00	
4017.00†	24.221	256.341	3875.09	-9.29	-176.39	-725.82	40°22'40.306"N	104°21'50.425"W	0.00	
4117.00†	24.221	256.341	3966.29	-9.80	-186.08	-765.68	40°22'40.210"N	104°21'50.940"W	0.00	
4217.00†	24.221	256.341	4057.48	-10.31	-195.77	-805.55	40°22'40.114"N	104°21'51.456"W	0.00	
4317.00†	24.221	256.341	4148.68	-10.82	-205.46	-845.41	40°22'40.019"N	104°21'51.971"W	0.00	
4417.00†	24.221	256.341	4239.88	-11.33	-215.14	-885.28	40°22'39.923"N	104°21'52.486"W	0.00	
4517.00†	24.221	256.341	4331.07	-11.84	-224.83	-925.15	40°22'39.827"N	104°21'53.001"W	0.00	
4617.00†	24.221	256.341	4422.27	-12.35	-234.52	-965.01	40°22'39.731"N	104°21'53.516"W	0.00	
4717.00†	24.221	256.341	4513.47	-12.86	-244.21	-1004.88	40°22'39.636"N	104°21'54.031"W	0.00	
4817.00†	24.221	256.341	4604.66	-13.37	-253.90	-1044.74	40°22'39.540"N	104°21'54.546"W	0.00	
4917.00†	24.221	256.341	4695.86	-13.88	-263.59	-1084.61	40°22'39.444"N	104°21'55.061"W	0.00	
5017.00†	24.221	256.341	4787.06	-14.39	-273.28	-1124.47	40°22'39.348"N	104°21'55.576"W	0.00	
5117.00†	24.221	256.341	4878.25	-14.90	-282.96	-1164.34	40°22'39.253"N	104°21'56.092"W	0.00	
5217.00†	24.221	256.341	4969.45	-15.41	-292.65	-1204.21	40°22'39.157"N	104°21'56.607"W	0.00	
5317.00†	24.221	256.341	5060.65	-15.92	-302.34	-1244.07	40°22'39.061"N	104°21'57.122"W	0.00	
5417.00†	24.221	256.341	5151.84	-16.43	-312.03	-1283.94	40°22'38.965"N	104°21'57.637"W	0.00	
5517.00†	24.221	256.341	5243.04	-16.94	-321.72	-1323.80	40°22'38.870"N	104°21'58.152"W	0.00	
5617.00†	24.221	256.341	5334.24	-17.45	-331.41	-1363.67	40°22'38.774"N	104°21'58.667"W	0.00	



Planned Wellpath Report

ANTELOPE 24-19-18XRLNB PWP (REV-A.0)

Page 4 of 9



REFERENCE WELLPATH IDENTIFICATION			
Operator	BONANZA CREEK OIL COMPANY	Slot	SLOT#08 ANTELOPE 24-19-18XRLNB (225'FSL & 1308'FEL, SEC.19)
Area	COLORADO	Well	ANTELOPE 24-19-18XRLNB
Field	WELD COUNTY	Wellbore	ANTELOPE 24-19-18XRLNB PWB
Facility	SEC.19-T05N-R62W		

WELLPATH DATA (174 stations) † = interpolated/extrapolated station

MD [ft]	Inclination [°]	Azimuth [°]	TVD [ft]	Vert Sect [ft]	North [ft]	East [ft]	Latitude	Longitude	DLS [°/100ft]	Comments
5717.00†	24.221	256.341	5425.43	-17.96	-341.09	-1403.53	40°22'38.678"N	104°21'59.182"W	0.00	
5817.00†	24.221	256.341	5516.63	-18.47	-350.78	-1443.40	40°22'38.582"N	104°21'59.697"W	0.00	
5917.00†	24.221	256.341	5607.83	-18.98	-360.47	-1483.27	40°22'38.487"N	104°22'00.212"W	0.00	
6017.00†	24.221	256.341	5699.02	-19.49	-370.16	-1523.13	40°22'38.391"N	104°22'00.727"W	0.00	
6117.00†	24.221	256.341	5790.22	-20.00	-379.85	-1563.00	40°22'38.295"N	104°22'01.243"W	0.00	
6164.83	24.221	256.341	5833.84	-20.24	-384.48	-1582.07	40°22'38.249"N	104°22'01.489"W	0.00	End of Tangent (XS)
6217.00†	23.816	269.141	5881.53	-18.17	-387.17	-1603.01	40°22'38.223"N	104°22'01.760"W	10.00	
6317.00†	25.945	292.518	5972.46	-1.21	-379.07	-1643.51	40°22'38.303"N	104°22'02.283"W	10.00	
6417.00†	31.101	310.588	6060.46	32.34	-353.83	-1683.43	40°22'38.552"N	104°22'02.799"W	10.00	
6517.00†	38.068	323.302	6142.84	81.46	-312.20	-1721.57	40°22'38.963"N	104°22'03.291"W	10.00	
6617.00†	46.021	332.392	6217.12	144.64	-255.45	-1756.75	40°22'39.524"N	104°22'03.746"W	10.00	
6717.00†	54.522	339.262	6281.02	219.98	-185.31	-1787.92	40°22'40.217"N	104°22'04.149"W	10.00	
6817.00†	63.335	344.789	6332.61	305.19	-103.91	-1814.13	40°22'41.022"N	104°22'04.488"W	10.00	
6917.00†	72.332	349.512	6370.32	397.67	-13.72	-1834.58	40°22'41.913"N	104°22'04.752"W	10.00	
7017.00†	81.430	353.778	6393.00	494.61	82.52	-1848.64	40°22'42.864"N	104°22'04.934"W	10.00	
7110.74	90.000	357.591	6400.00†	586.93	175.63	-1855.65	40°22'43.784"N	104°22'05.025"W	10.00	End of 3D Arc (XS)
7117.00†	90.000	357.591	6400.00	593.08	181.89	-1855.92	40°22'43.846"N	104°22'05.028"W	0.00	
7217.00†	90.000	357.591	6400.00	691.39	281.80	-1860.12	40°22'44.833"N	104°22'05.082"W	0.00	
7317.00†	90.000	357.591	6400.00	789.71	381.71	-1864.32	40°22'45.820"N	104°22'05.137"W	0.00	
7417.00†	90.000	357.591	6400.00	888.02	481.62	-1868.53	40°22'46.808"N	104°22'05.191"W	0.00	
7517.00†	90.000	357.591	6400.00	986.33	581.53	-1872.73	40°22'47.795"N	104°22'05.246"W	0.00	
7617.00†	90.000	357.591	6400.00	1084.65	681.44	-1876.94	40°22'48.782"N	104°22'05.300"W	0.00	
7717.00†	90.000	357.591	6400.00	1182.96	781.36	-1881.14	40°22'49.769"N	104°22'05.354"W	0.00	
7817.00†	90.000	357.591	6400.00	1281.28	881.27	-1885.34	40°22'50.757"N	104°22'05.409"W	0.00	
7917.00†	90.000	357.591	6400.00	1379.59	981.18	-1889.55	40°22'51.744"N	104°22'05.463"W	0.00	
8017.00†	90.000	357.591	6400.00	1477.90	1081.09	-1893.75	40°22'52.731"N	104°22'05.518"W	0.00	
8117.00†	90.000	357.591	6400.00	1576.22	1181.00	-1897.95	40°22'53.719"N	104°22'05.572"W	0.00	
8217.00†	90.000	357.591	6400.00	1674.53	1280.91	-1902.16	40°22'54.706"N	104°22'05.627"W	0.00	
8317.00†	90.000	357.591	6400.00	1772.84	1380.83	-1906.36	40°22'55.693"N	104°22'05.681"W	0.00	
8417.00†	90.000	357.591	6400.00	1871.16	1480.74	-1910.57	40°22'56.680"N	104°22'05.735"W	0.00	



Planned Wellpath Report

ANTELOPE 24-19-18XRLNB PWP (REV-A.0)

Page 5 of 9



REFERENCE WELLPATH IDENTIFICATION			
Operator	BONANZA CREEK OIL COMPANY	Slot	SLOT#08 ANTELOPE 24-19-18XRLNB (225'FSL & 1308'FEL, SEC.19)
Area	COLORADO	Well	ANTELOPE 24-19-18XRLNB
Field	WELD COUNTY	Wellbore	ANTELOPE 24-19-18XRLNB PWB
Facility	SEC.19-T05N-R62W		

WELLPATH DATA (174 stations) † = interpolated/extrapolated station

MD [ft]	Inclination [°]	Azimuth [°]	TVD [ft]	Vert Sect [ft]	North [ft]	East [ft]	Latitude	Longitude	DLS [°/100ft]	Comments
8517.00†	90.000	357.591	6400.00	1969.47	1580.65	-1914.77	40°22'57.668"N	104°22'05.790"W	0.00	
8617.00†	90.000	357.591	6400.00	2067.78	1680.56	-1918.97	40°22'58.655"N	104°22'05.844"W	0.00	
8717.00†	90.000	357.591	6400.00	2166.10	1780.47	-1923.18	40°22'59.642"N	104°22'05.899"W	0.00	
8817.00†	90.000	357.591	6400.00	2264.41	1880.38	-1927.38	40°23'00.630"N	104°22'05.953"W	0.00	
8917.00†	90.000	357.591	6400.00	2362.72	1980.30	-1931.58	40°23'01.617"N	104°22'06.007"W	0.00	
9017.00†	90.000	357.591	6400.00	2461.04	2080.21	-1935.79	40°23'02.604"N	104°22'06.062"W	0.00	
9117.00†	90.000	357.591	6400.00	2559.35	2180.12	-1939.99	40°23'03.591"N	104°22'06.116"W	0.00	
9217.00†	90.000	357.591	6400.00	2657.66	2280.03	-1944.20	40°23'04.579"N	104°22'06.171"W	0.00	
9317.00†	90.000	357.591	6400.00	2755.98	2379.94	-1948.40	40°23'05.566"N	104°22'06.225"W	0.00	
9417.00†	90.000	357.591	6400.00	2854.29	2479.85	-1952.60	40°23'06.553"N	104°22'06.280"W	0.00	
9517.00†	90.000	357.591	6400.00	2952.60	2579.76	-1956.81	40°23'07.541"N	104°22'06.334"W	0.00	
9617.00†	90.000	357.591	6400.00	3050.92	2679.68	-1961.01	40°23'08.528"N	104°22'06.388"W	0.00	
9717.00†	90.000	357.591	6400.00	3149.23	2779.59	-1965.22	40°23'09.515"N	104°22'06.443"W	0.00	
9817.00†	90.000	357.591	6400.00	3247.54	2879.50	-1969.42	40°23'10.502"N	104°22'06.497"W	0.00	
9917.00†	90.000	357.591	6400.00	3345.86	2979.41	-1973.62	40°23'11.490"N	104°22'06.552"W	0.00	
10017.00†	90.000	357.591	6400.00	3444.17	3079.32	-1977.83	40°23'12.477"N	104°22'06.606"W	0.00	
10117.00†	90.000	357.591	6400.00	3542.49	3179.23	-1982.03	40°23'13.464"N	104°22'06.661"W	0.00	
10217.00†	90.000	357.591	6400.00	3640.80	3279.15	-1986.23	40°23'14.452"N	104°22'06.715"W	0.00	
10317.00†	90.000	357.591	6400.00	3739.11	3379.06	-1990.44	40°23'15.439"N	104°22'06.769"W	0.00	
10417.00†	90.000	357.591	6400.00	3837.43	3478.97	-1994.64	40°23'16.426"N	104°22'06.824"W	0.00	
10517.00†	90.000	357.591	6400.00	3935.74	3578.88	-1998.85	40°23'17.413"N	104°22'06.878"W	0.00	
10617.00†	90.000	357.591	6400.00	4034.05	3678.79	-2003.05	40°23'18.401"N	104°22'06.933"W	0.00	
10717.00†	90.000	357.591	6400.00	4132.37	3778.70	-2007.25	40°23'19.388"N	104°22'06.987"W	0.00	
10817.00†	90.000	357.591	6400.00	4230.68	3878.62	-2011.46	40°23'20.375"N	104°22'07.042"W	0.00	
10917.00†	90.000	357.591	6400.00	4328.99	3978.53	-2015.66	40°23'21.363"N	104°22'07.096"W	0.00	
11017.00†	90.000	357.591	6400.00	4427.31	4078.44	-2019.86	40°23'22.350"N	104°22'07.150"W	0.00	
11117.00†	90.000	357.591	6400.00	4525.62	4178.35	-2024.07	40°23'23.337"N	104°22'07.205"W	0.00	
11217.00†	90.000	357.591	6400.00	4623.93	4278.26	-2028.27	40°23'24.325"N	104°22'07.259"W	0.00	
11317.00†	90.000	357.591	6400.00	4722.25	4378.17	-2032.48	40°23'25.312"N	104°22'07.314"W	0.00	
11417.00†	90.000	357.591	6400.00	4820.56	4478.09	-2036.68	40°23'26.299"N	104°22'07.368"W	0.00	



Planned Wellpath Report

ANTELOPE 24-19-18XRLNB PWP (REV-A.0)

Page 6 of 9



REFERENCE WELLPATH IDENTIFICATION			
Operator	BONANZA CREEK OIL COMPANY	Slot	SLOT#08 ANTELOPE 24-19-18XRLNB (225'FSL & 1308'FEL, SEC.19)
Area	COLORADO	Well	ANTELOPE 24-19-18XRLNB
Field	WELD COUNTY	Wellbore	ANTELOPE 24-19-18XRLNB PWB
Facility	SEC.19-T05N-R62W		

WELLPATH DATA (174 stations) † = interpolated/extrapolated station

MD [ft]	Inclination [°]	Azimuth [°]	TVD [ft]	Vert Sect [ft]	North [ft]	East [ft]	Latitude	Longitude	DLS [°/100ft]	Comments
11517.00†	90.000	357.591	6400.00	4918.87	4578.00	-2040.88	40°23'27.286"N	104°22'07.423"W	0.00	
11617.00†	90.000	357.591	6400.00	5017.19	4677.91	-2045.09	40°23'28.274"N	104°22'07.477"W	0.00	
11717.00†	90.000	357.591	6400.00	5115.50	4777.82	-2049.29	40°23'29.261"N	104°22'07.531"W	0.00	
11817.00†	90.000	357.591	6400.00	5213.81	4877.73	-2053.49	40°23'30.248"N	104°22'07.586"W	0.00	
11917.00†	90.000	357.591	6400.00	5312.13	4977.64	-2057.70	40°23'31.236"N	104°22'07.640"W	0.00	
12017.00†	90.000	357.591	6400.00	5410.44	5077.55	-2061.90	40°23'32.223"N	104°22'07.695"W	0.00	
12117.00†	90.000	357.591	6400.00	5508.75	5177.47	-2066.11	40°23'33.210"N	104°22'07.749"W	0.00	
12217.00†	90.000	357.591	6400.00	5607.07	5277.38	-2070.31	40°23'34.197"N	104°22'07.804"W	0.00	
12317.00†	90.000	357.591	6400.00	5705.38	5377.29	-2074.51	40°23'35.185"N	104°22'07.858"W	0.00	
12417.00†	90.000	357.591	6400.00	5803.69	5477.20	-2078.72	40°23'36.172"N	104°22'07.913"W	0.00	
12517.00†	90.000	357.591	6400.00	5902.01	5577.11	-2082.92	40°23'37.159"N	104°22'07.967"W	0.00	
12617.00†	90.000	357.591	6400.00	6000.32	5677.02	-2087.12	40°23'38.147"N	104°22'08.021"W	0.00	
12717.00†	90.000	357.591	6400.00	6098.64	5776.94	-2091.33	40°23'39.134"N	104°22'08.076"W	0.00	
12817.00†	90.000	357.591	6400.00	6196.95	5876.85	-2095.53	40°23'40.121"N	104°22'08.130"W	0.00	
12917.00†	90.000	357.591	6400.00	6295.26	5976.76	-2099.74	40°23'41.108"N	104°22'08.185"W	0.00	
13017.00†	90.000	357.591	6400.00	6393.58	6076.67	-2103.94	40°23'42.096"N	104°22'08.239"W	0.00	
13117.00†	90.000	357.591	6400.00	6491.89	6176.58	-2108.14	40°23'43.083"N	104°22'08.294"W	0.00	
13217.00†	90.000	357.591	6400.00	6590.20	6276.49	-2112.35	40°23'44.070"N	104°22'08.348"W	0.00	
13317.00†	90.000	357.591	6400.00	6688.52	6376.41	-2116.55	40°23'45.058"N	104°22'08.403"W	0.00	
13417.00†	90.000	357.591	6400.00	6786.83	6476.32	-2120.75	40°23'46.045"N	104°22'08.457"W	0.00	
13517.00†	90.000	357.591	6400.00	6885.14	6576.23	-2124.96	40°23'47.032"N	104°22'08.511"W	0.00	
13617.00†	90.000	357.591	6400.00	6983.46	6676.14	-2129.16	40°23'48.019"N	104°22'08.566"W	0.00	
13717.00†	90.000	357.591	6400.00	7081.77	6776.05	-2133.37	40°23'49.007"N	104°22'08.620"W	0.00	
13817.00†	90.000	357.591	6400.00	7180.08	6875.96	-2137.57	40°23'49.994"N	104°22'08.675"W	0.00	
13917.00†	90.000	357.591	6400.00	7278.40	6975.88	-2141.77	40°23'50.981"N	104°22'08.729"W	0.00	
14017.00†	90.000	357.591	6400.00	7376.71	7075.79	-2145.98	40°23'51.969"N	104°22'08.784"W	0.00	
14117.00†	90.000	357.591	6400.00	7475.02	7175.70	-2150.18	40°23'52.956"N	104°22'08.838"W	0.00	
14217.00†	90.000	357.591	6400.00	7573.34	7275.61	-2154.39	40°23'53.943"N	104°22'08.893"W	0.00	
14317.00†	90.000	357.591	6400.00	7671.65	7375.52	-2158.59	40°23'54.930"N	104°22'08.947"W	0.00	
14417.00†	90.000	357.591	6400.00	7769.96	7475.43	-2162.79	40°23'55.918"N	104°22'09.001"W	0.00	



Planned Wellpath Report

ANTELOPE 24-19-18XRLNB PWP (REV-A.0)

Page 7 of 9



REFERENCE WELLPATH IDENTIFICATION			
Operator	BONANZA CREEK OIL COMPANY	Slot	SLOT#08 ANTELOPE 24-19-18XRLNB (225'FSL & 1308'FEL, SEC.19)
Area	COLORADO	Well	ANTELOPE 24-19-18XRLNB
Field	WELD COUNTY	Wellbore	ANTELOPE 24-19-18XRLNB PWB
Facility	SEC.19-T05N-R62W		

WELLPATH DATA (174 stations) † = interpolated/extrapolated station

MD [ft]	Inclination [°]	Azimuth [°]	TVD [ft]	Vert Sect [ft]	North [ft]	East [ft]	Latitude	Longitude	DLS [°/100ft]	Comments
14517.00†	90.000	357.591	6400.00	7868.28	7575.35	-2167.00	40°23'56.905"N	104°22'09.056"W	0.00	
14617.00†	90.000	357.591	6400.00	7966.59	7675.26	-2171.20	40°23'57.892"N	104°22'09.110"W	0.00	
14717.00†	90.000	357.591	6400.00	8064.90	7775.17	-2175.40	40°23'58.880"N	104°22'09.165"W	0.00	
14817.00†	90.000	357.591	6400.00	8163.22	7875.08	-2179.61	40°23'59.867"N	104°22'09.219"W	0.00	
14917.00†	90.000	357.591	6400.00	8261.53	7974.99	-2183.81	40°24'00.854"N	104°22'09.274"W	0.00	
15017.00†	90.000	357.591	6400.00	8359.84	8074.90	-2188.02	40°24'01.841"N	104°22'09.328"W	0.00	
15117.00†	90.000	357.591	6400.00	8458.16	8174.81	-2192.22	40°24'02.829"N	104°22'09.383"W	0.00	
15217.00†	90.000	357.591	6400.00	8556.47	8274.73	-2196.42	40°24'03.816"N	104°22'09.437"W	0.00	
15317.00†	90.000	357.591	6400.00	8654.79	8374.64	-2200.63	40°24'04.803"N	104°22'09.491"W	0.00	
15417.00†	90.000	357.591	6400.00	8753.10	8474.55	-2204.83	40°24'05.791"N	104°22'09.546"W	0.00	
15517.00†	90.000	357.591	6400.00	8851.41	8574.46	-2209.03	40°24'06.778"N	104°22'09.600"W	0.00	
15617.00†	90.000	357.591	6400.00	8949.73	8674.37	-2213.24	40°24'07.765"N	104°22'09.655"W	0.00	
15717.00†	90.000	357.591	6400.00	9048.04	8774.28	-2217.44	40°24'08.752"N	104°22'09.709"W	0.00	
15817.00†	90.000	357.591	6400.00	9146.35	8874.20	-2221.65	40°24'09.740"N	104°22'09.764"W	0.00	
15917.00†	90.000	357.591	6400.00	9244.67	8974.11	-2225.85	40°24'10.727"N	104°22'09.818"W	0.00	
16017.00†	90.000	357.591	6400.00	9342.98	9074.02	-2230.05	40°24'11.714"N	104°22'09.873"W	0.00	
16117.00†	90.000	357.591	6400.00	9441.29	9173.93	-2234.26	40°24'12.702"N	104°22'09.927"W	0.00	
16217.00†	90.000	357.591	6400.00	9539.61	9273.84	-2238.46	40°24'13.689"N	104°22'09.982"W	0.00	
16317.00†	90.000	357.591	6400.00	9637.92	9373.75	-2242.66	40°24'14.676"N	104°22'10.036"W	0.00	
16417.00†	90.000	357.591	6400.00	9736.23	9473.67	-2246.87	40°24'15.663"N	104°22'10.090"W	0.00	
16517.00†	90.000	357.591	6400.00	9834.55	9573.58	-2251.07	40°24'16.651"N	104°22'10.145"W	0.00	
16617.00†	90.000	357.591	6400.00	9932.86	9673.49	-2255.28	40°24'17.638"N	104°22'10.199"W	0.00	
16717.00†	90.000	357.591	6400.00	10031.17	9773.40	-2259.48	40°24'18.625"N	104°22'10.254"W	0.00	
16784.29	90.000	357.591	6400.00 ²	10097.33	9840.63	-2262.31	40°24'19.290"N	104°22'10.290"W	0.00	End of Tangent (XS)



Planned Wellpath Report

ANTELOPE 24-19-18XRLNB PWP (REV-A.0)

Page 8 of 9



REFERENCE WELLPATH IDENTIFICATION			
Operator	BONANZA CREEK OIL COMPANY	Slot	SLOT#08 ANTELOPE 24-19-18XRLNB (225'FSL & 1308'FEL, SEC.19)
Area	COLORADO	Well	ANTELOPE 24-19-18XRLNB
Field	WELD COUNTY	Wellbore	ANTELOPE 24-19-18XRLNB PWB
Facility	SEC.19-T05N-R62W		

HOLE & CASING SECTIONS - Ref Wellbore: ANTELOPE 24-19-18XRLNB PWB Ref Wellpath: ANTELOPE 24-19-18XRLNB PWP (REV-A.0)									
String/Diameter	Start MD [ft]	End MD [ft]	Interval [ft]	Start TVD [ft]	End TVD [ft]	Start N/S [ft]	Start E/W [ft]	End N/S [ft]	End E/W [ft]
9.625in Casing Surface	17.00	1550.00	1533.00	17.00	1550.00	0.00	0.00	0.00	0.00
8.5in Open Hole	1550.00	16784.29	15234.29	1550.00	N/A	0.00	0.00	N/A	N/A

TARGETS									
Name	MD [ft]	TVD [ft]	North [ft]	East [ft]	Grid East [US ft]	Grid North [US ft]	Latitude	Longitude	Shape
SEC.18-T05N-R62W		0.00	3.64	139.85	3317343.70	1382714.21	40°22'42.085"N	104°21'39.240"W	polygon
SEC.19-T05N-R62W		0.00	3.64	139.85	3317343.70	1382714.21	40°22'42.085"N	104°21'39.240"W	polygon
2) ANTELOPE 24-19-18XRLNB BHL (470'FNL& 1650'FWL, SEC.18)	16784.29	6400.00	9840.63	-2262.31	3314815.55	1392519.12	40°24'19.290"N	104°22'10.290"W	point
1) ANTELOPE 24-19-18XRLNB LP (470'FSL& 1870'FWL, SEC.19)	7110.74	6400.00	175.63	-1855.65	3315346.24	1382860.55	40°22'43.784"N	104°22'05.025"W	point
SEC.18/19-T05N-R62W (460'SETBACK)		6475.00	3.64	139.85	3317343.70	1382714.21	40°22'42.085"N	104°21'39.240"W	polygon

SURVEY PROGRAM - Ref Wellbore: ANTELOPE 24-19-18XRLNB PWB Ref Wellpath: ANTELOPE 24-19-18XRLNB PWP (REV-A.0)				
Start MD [ft]	End MD [ft]	Positional Uncertainty Model	Log Name/Comment	Wellbore
17.00	1550.00	Custom BHI NaviTrak (Standard Rotating+Axial Corr) (Rockies 0.03Gt model)		ANTELOPE 24-19-18XRLNB PWB
1550.00	16784.29	Custom BHI AutoTrak Curve (Axial Corr, Short spacing) (Rockies 0.03Gt model)		ANTELOPE 24-19-18XRLNB PWB



Planned Wellpath Report

ANTELOPE 24-19-18XRLNB PWP (REV-A.0)

Page 9 of 9



REFERENCE WELLPATH IDENTIFICATION			
Operator	BONANZA CREEK OIL COMPANY	Slot	SLOT#08 ANTELOPE 24-19-18XRLNB (225'FSL & 1308'FEL, SEC.19)
Area	COLORADO	Well	ANTELOPE 24-19-18XRLNB
Field	WELD COUNTY	Wellbore	ANTELOPE 24-19-18XRLNB PWB
Facility	SEC.19-T05N-R62W		

DESIGN COMMENTS				
MD [ft]	Inclination [°]	Azimuth [°]	TVD [ft]	Comment
17.00	0.000	256.341	17.00	Tie On
1600.00	0.000	256.341	1600.00	End of Tangent
2811.06	24.221	256.341	2775.31	End of Build (XS)
6164.83	24.221	256.341	5833.84	End of Tangent (XS)
7110.74	90.000	357.591	6400.00	End of 3D Arc (XS)
16784.29	90.000	357.591	6400.00	End of Tangent (XS)