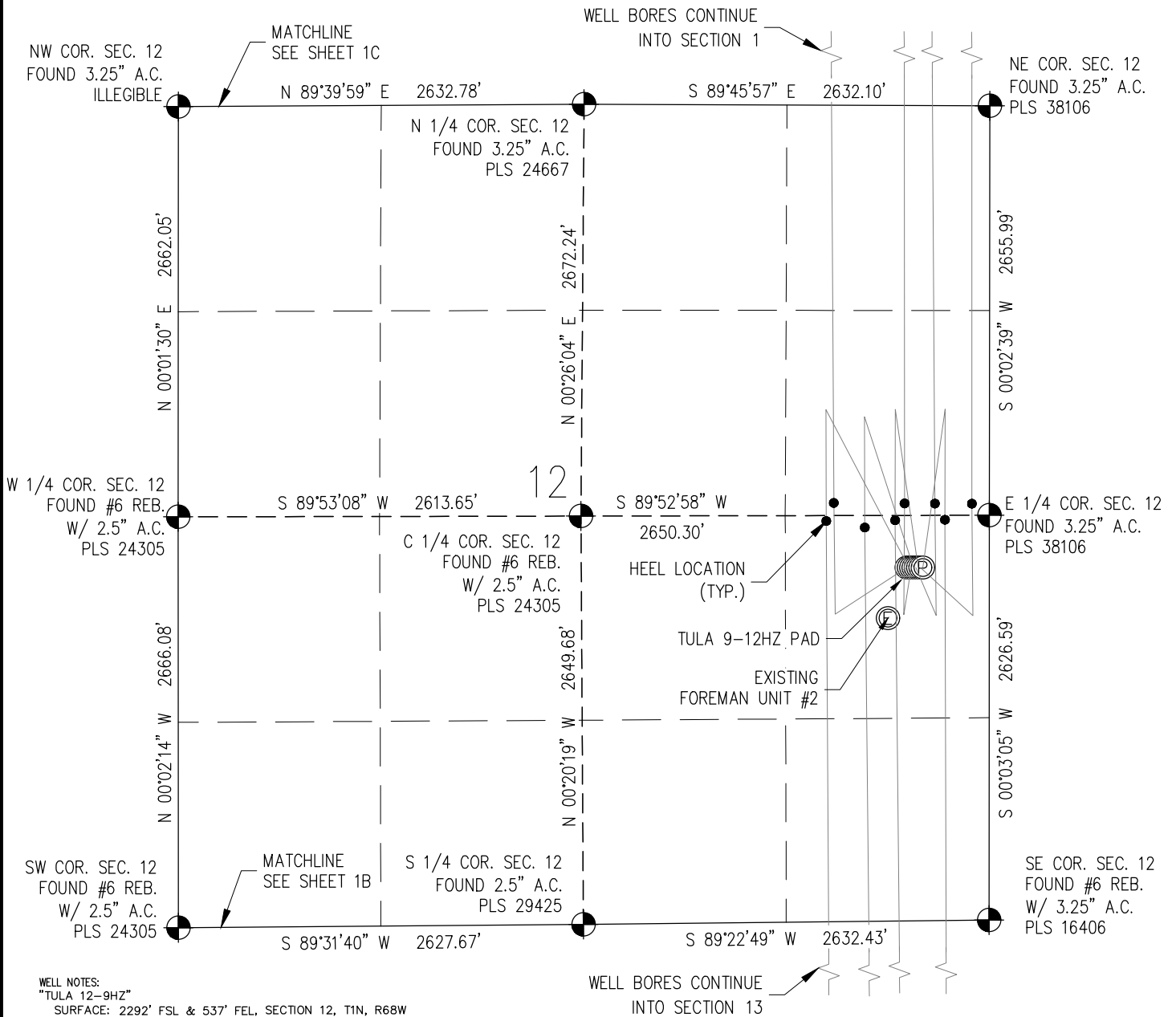


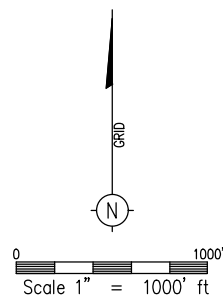
MULTI-WELL PLAN SECTION 12, T1N, R68W



WELL NOTES:

- "TULA 12-9HZ"
SURFACE: 2292' FSL & 537' FEL, SECTION 12, T1N, R68W
BOTTOMHOLE: 2601' FSL & 1035' FEL, SECTION 36, T2N, R68W
- "TULA 12-10HZ"
SURFACE: 2292' FSL & 522' FEL, SECTION 12, T1N, R68W
BOTTOMHOLE: 51' FSL & 1028' FEL, SECTION 13, T1N, R68W
- "TULA 12-11HZ"
SURFACE: 2291' FSL & 507' FEL, SECTION 12, T1N, R68W
BOTTOMHOLE: 2601' FSL & 523' FEL, SECTION 36, T2N, R68W
- "TULA 12-12HZ"
SURFACE: 2291' FSL & 492' FEL, SECTION 12, T1N, R68W
BOTTOMHOLE: 50' FSL & 743' FEL, SECTION 13, T1N, R68W
- "TULA 12-13HZ"
SURFACE: 2291' FSL & 477' FEL, SECTION 12, T1N, R68W
BOTTOMHOLE: 50' FSL & 395' FEL, SECTION 36, T2N, R68W
- "TULA 12-14HZ"
SURFACE: 2291' FSL & 462' FEL, SECTION 12, T1N, R68W
BOTTOMHOLE: 50' FSL & 548' FEL, SECTION 13, T1N, R68W
- "TULA 12-15HZ"
SURFACE: 2291' FSL & 447' FEL, SECTION 12, T1N, R68W
BOTTOMHOLE: 50' FSL & 75' FEL, SECTION 36, T2N, R68W
- "TULA 12-16HZ"
SURFACE: 2291' FSL & 432' FEL, SECTION 12, T1N, R68W
BOTTOMHOLE: 50' FSL & 283' FEL, SECTION 13, T1N, R68W

WELL BORES CONTINUE
INTO SECTION 13



NOTES:

1. INDICATES SECTION CORNER
2. INDICATES CALCULATED CORNER
3. (C) INDICATES CALCULATED DIMENSION
4. BASIS OF BEARING DERIVED FROM COLORADO COORDINATE SYSTEM OF 1983 NORTH ZONE.
5. ALL MEASURED DISTANCES ARE GRID.
COMBINED SCALE FACTOR .99972059 CALCULATED FROM THE EAST 1/4 CORNER OF SECTION 12, T1N, R68W
6. WELL FOOTAGES ARE MEASURED AT RIGHT ANGLES TO THE SECTION LINES.

WELL PAD - TULA 9-12HZ

MULTI-WELL PAD PLAN
TULA 12-9HZ, TULA 12-10HZ, TULA 12-11HZ,
TULA 12-12HZ, TULA 12-13HZ, TULA 12-14HZ,
TULA 12-15HZ, TULA 12-16HZ

LOCATED IN SECTION 12, T1N,
R68W, 6TH P.M.
WELD COUNTY, COLORADO

**Kerr-McGee Oil &
Gas Onshore L.P.**

1099 18th Street
Denver, Colorado 80202

DRAWN BY

JMH

CHECKED BY

AAD

INITIAL SUBMITTAL 3/13/2018

REVISED 3/14/2017

DRAWING SIZE 8.5" X 11"

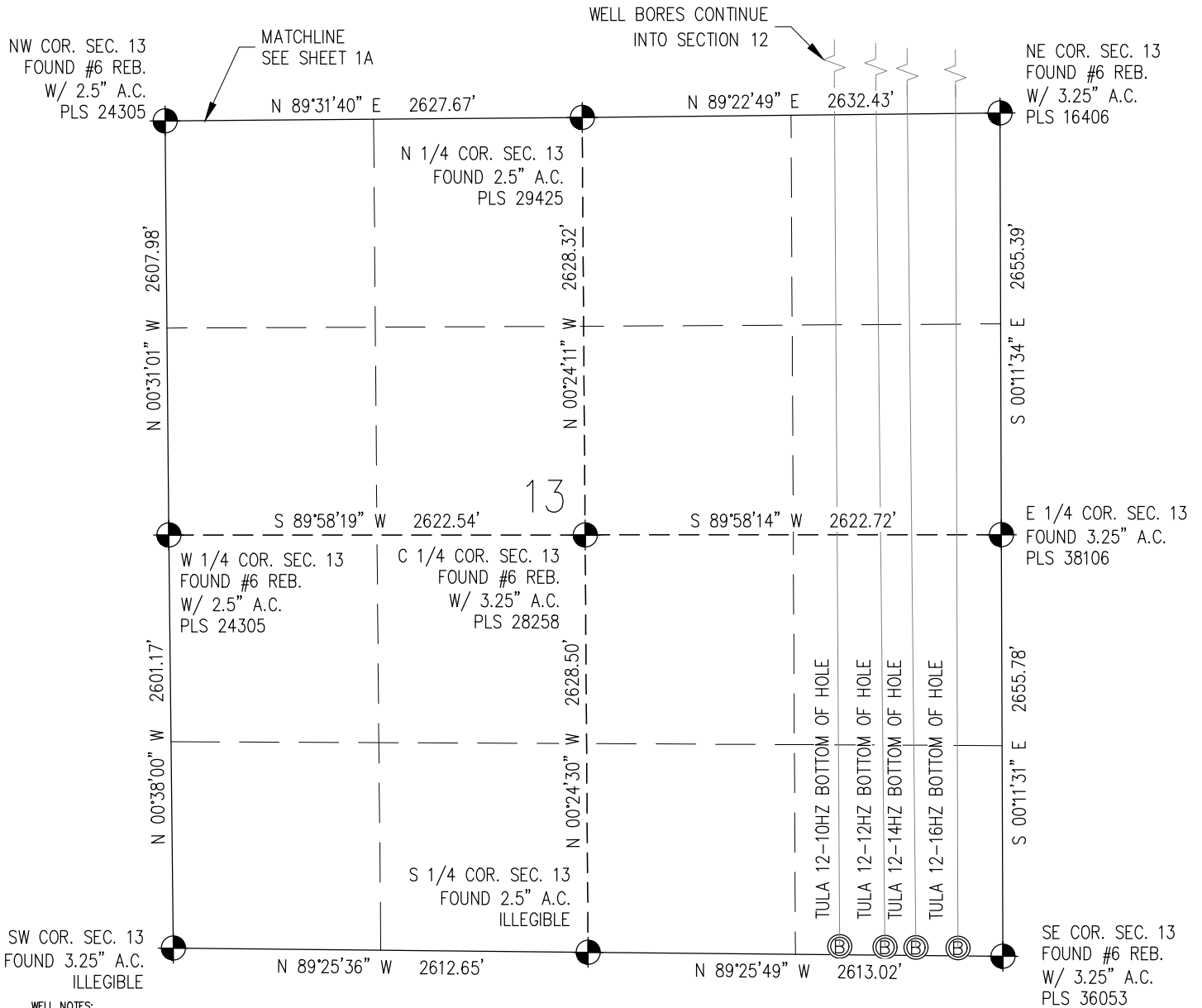
JOB NO. ANA01N68W12-01

SHEET 1A OF 1

BASELINE
Engineering - Planning - Surveying

4007 S. LINCOLN AVENUE, SUITE 405 - LOVELAND, COLORADO 80537
P: 970.353.7800 - F: 970.353.7801 - www.baselinecorp.com

MULTI-WELL PLAN SECTION 13, T1N, R68W

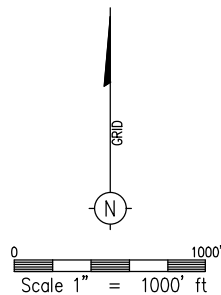


WELL NOTES:

- "TULA 12-9HZ"
SURFACE: 2292' FSL & 537' FEL, SECTION 12, T1N, R68W
BOTTOMHOLE: 2601' FSL & 1035' FEL, SECTION 36, T2N, R68W
- "TULA 12-10HZ"
SURFACE: 2292' FSL & 522' FEL, SECTION 12, T1N, R68W
BOTTOMHOLE: 51' FSL & 1028' FEL, SECTION 13, T1N, R68W
- "TULA 12-11HZ"
SURFACE: 2291' FSL & 507' FEL, SECTION 12, T1N, R68W
BOTTOMHOLE: 2601' FSL & 523' FEL, SECTION 36, T2N, R68W
- "TULA 12-12HZ"
SURFACE: 2291' FSL & 492' FEL, SECTION 12, T1N, R68W
BOTTOMHOLE: 50' FSL & 743' FEL, SECTION 13, T1N, R68W
- "TULA 12-13HZ"
SURFACE: 2291' FSL & 477' FEL, SECTION 12, T1N, R68W
BOTTOMHOLE: 50' FSL & 395' FEL, SECTION 36, T2N, R68W
- "TULA 12-14HZ"
SURFACE: 2291' FSL & 462' FEL, SECTION 12, T1N, R68W
BOTTOMHOLE: 50' FSL & 548' FEL, SECTION 13, T1N, R68W
- "TULA 12-15HZ"
SURFACE: 2291' FSL & 447' FEL, SECTION 12, T1N, R68W
BOTTOMHOLE: 50' FSL & 75' FEL, SECTION 36, T2N, R68W
- "TULA 12-16HZ"
SURFACE: 2291' FSL & 432' FEL, SECTION 12, T1N, R68W
BOTTOMHOLE: 50' FSL & 283' FEL, SECTION 13, T1N, R68W

NOTES:

1. INDICATES SECTION CORNER
2. INDICATES CALCULATED CORNER
3. (C) INDICATES CALCULATED DIMENSION
4. BASIS OF BEARING DERIVED FROM COLORADO COORDINATE SYSTEM OF 1983 NORTH ZONE.
5. ALL MEASURED DISTANCES ARE GRID.
COMBINED SCALE FACTOR .99972059 CALCULATED FROM THE EAST 1/4 CORNER OF SECTION 12, T1N, R68W
6. WELL FOOTAGES ARE MEASURED AT RIGHT ANGLES TO THE SECTION LINES.



WELL PAD - TULA 9-12HZ

MULTI-WELL PAD PLAN
TULA 12-9HZ, TULA 12-10HZ, TULA 12-11HZ,
TULA 12-12HZ, TULA 12-13HZ, TULA 12-14HZ,
TULA 12-15HZ, TULA 12-16HZ

LOCATED IN SECTION 12, T1N,
R68W, 6TH P.M.
WELD COUNTY, COLORADO

**Kerr-McGee Oil &
Gas Onshore L.P.**

1099 18th Street
Denver, Colorado 80202

DRAWN BY
JMH

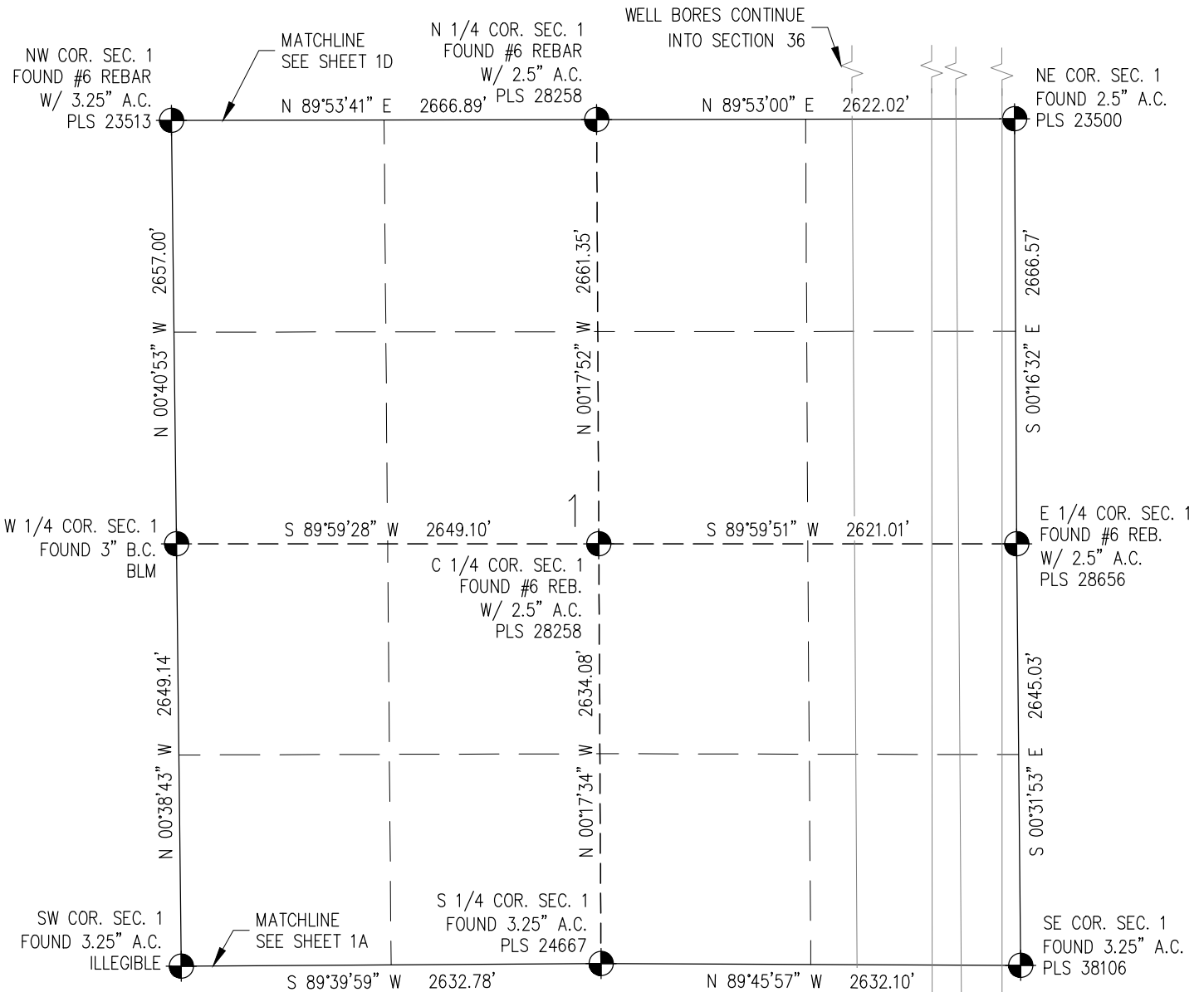
CHECKED BY
AAD

INITIAL SUBMITTAL	3/13/2018
REVISED	3/14/2017
DRAWING SIZE	8.5" X 11"
JOB NO.	ANAOIN68W12-01
SHEET	1B OF 1

BASLINE
Engineering - Planning - Surveying

4007 S. LINCOLN AVENUE, SUITE 405 - LOVELAND, COLORADO 80537
P: 970.353.7800 - F: 970.353.7801 - www.baselinecorp.com

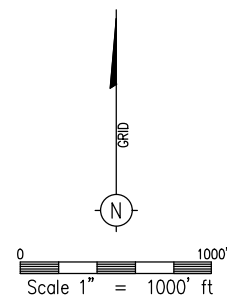
MULTI-WELL PLAN SECTION 1, T1N, R68W



WELL NOTES:

- "TULA 12-9HZ"
SURFACE: 2292' FSL & 537' FEL, SECTION 12, T1N, R68W
BOTTOMHOLE: 2601' FSL & 1035' FEL, SECTION 36, T2N, R68W
- "TULA 12-10HZ"
SURFACE: 2292' FSL & 522' FEL, SECTION 12, T1N, R68W
BOTTOMHOLE: 51' FSL & 1028' FEL, SECTION 13, T1N, R68W
- "TULA 12-11HZ"
SURFACE: 2291' FSL & 507' FEL, SECTION 12, T1N, R68W
BOTTOMHOLE: 2601' FSL & 523' FEL, SECTION 36, T2N, R68W
- "TULA 12-12HZ"
SURFACE: 2291' FSL & 492' FEL, SECTION 12, T1N, R68W
BOTTOMHOLE: 50' FSL & 743' FEL, SECTION 13, T1N, R68W
- "TULA 12-13HZ"
SURFACE: 2291' FSL & 477' FEL, SECTION 12, T1N, R68W
BOTTOMHOLE: 50' FSL & 395' FEL, SECTION 36, T2N, R68W
- "TULA 12-14HZ"
SURFACE: 2291' FSL & 462' FEL, SECTION 12, T1N, R68W
BOTTOMHOLE: 50' FSL & 548' FEL, SECTION 13, T1N, R68W
- "TULA 12-15HZ"
SURFACE: 2291' FSL & 447' FEL, SECTION 12, T1N, R68W
BOTTOMHOLE: 50' FSL & 75' FEL, SECTION 36, T2N, R68W
- "TULA 12-16HZ"
SURFACE: 2291' FSL & 432' FEL, SECTION 12, T1N, R68W
BOTTOMHOLE: 50' FSL & 283' FEL, SECTION 13, T1N, R68W

WELL BORES CONTINUE
INTO SECTION 12



NOTES:

1. INDICATES SECTION CORNER
2. INDICATES CALCULATED CORNER
3. (C) INDICATES CALCULATED DIMENSION
4. BASIS OF BEARING DERIVED FROM COLORADO COORDINATE SYSTEM OF 1983 NORTH ZONE.
5. ALL MEASURED DISTANCES ARE GRID.
COMBINED SCALE FACTOR .99972059 CALCULATED FROM THE EAST 1/4 CORNER OF SECTION 12, T1N, R68W
6. WELL FOOTAGES ARE MEASURED AT RIGHT ANGLES TO THE SECTION LINES.

WELL PAD - TULA 9-12HZ

MULTI-WELL PAD PLAN
TULA 12-9HZ, TULA 12-10HZ, TULA 12-11HZ,
TULA 12-12HZ, TULA 12-13HZ, TULA 12-14HZ,
TULA 12-15HZ, TULA 12-16HZ

LOCATED IN SECTION 12, T1N,
R68W, 6TH P.M.
WELD COUNTY, COLORADO

**Kerr-McGee Oil &
Gas Onshore L.P.**

1099 18th Street
Denver, Colorado 80202

DRAWN BY
JMH

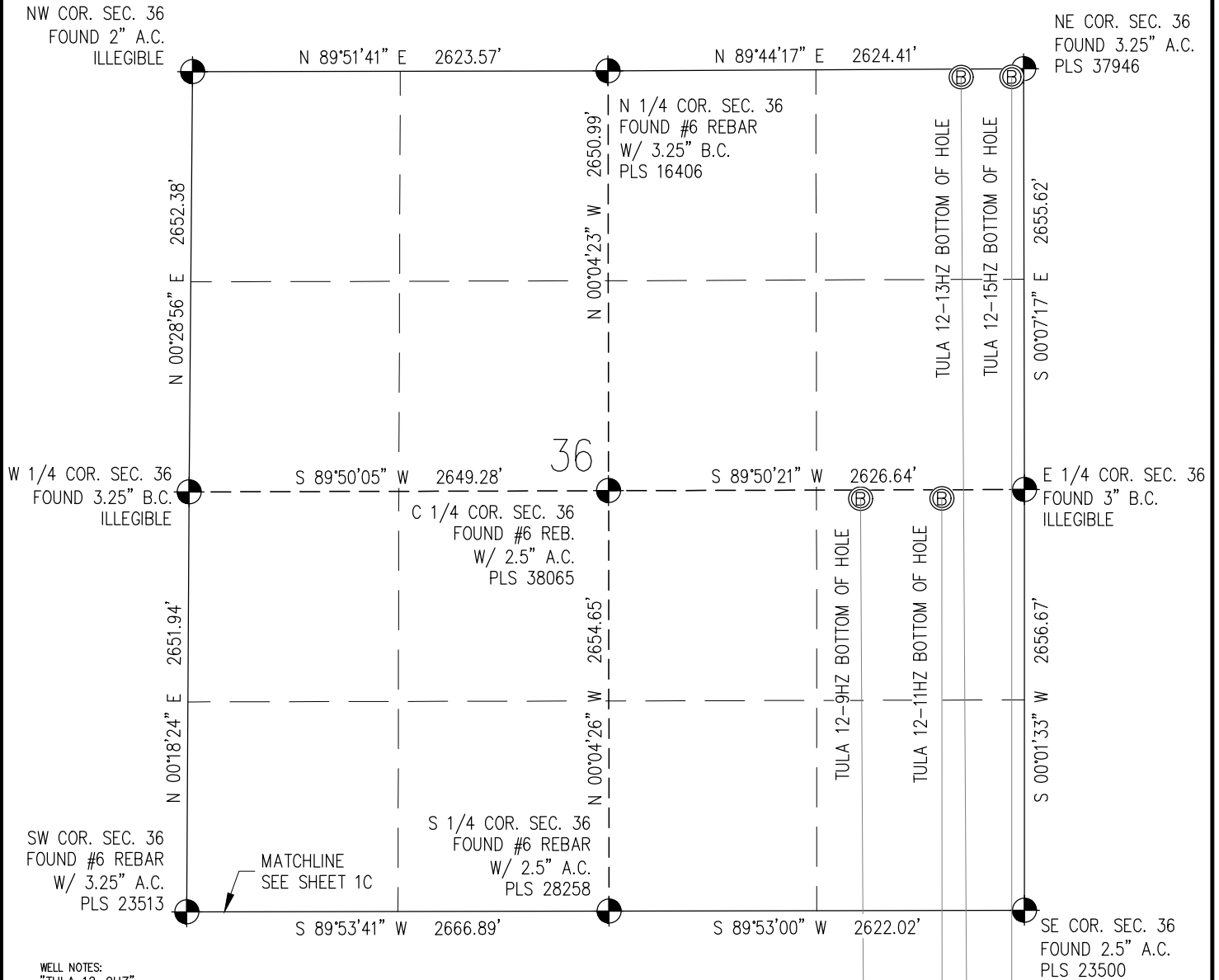
CHECKED BY
AAD

INITIAL SUBMITTAL	3/13/2018
REVISED	3/14/2017
DRAWING SIZE	8.5" X 11"
JOB NO.	ANA01N68W12-01
SHEET	1C OF 1

BASELINE
Engineering - Planning - Surveying

4007 S. LINCOLN AVENUE, SUITE 405 - LOVELAND, COLORADO 80537
P: 970.353.7800 - F: 970.353.7801 - www.baselinecorp.com

MULTI-WELL PLAN SECTION 36, T2N, R68W



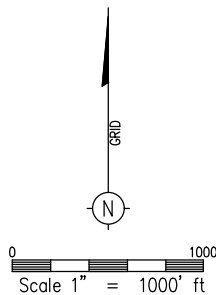
WELL NOTES:

- "TULA 12-9HZ"
SURFACE: 2292' FSL & 537' FEL, SECTION 12, T1N, R68W
BOTTOMHOLE: 2601' FSL & 1035' FEL, SECTION 36, T2N, R68W
- "TULA 12-10HZ"
SURFACE: 2292' FSL & 522' FEL, SECTION 12, T1N, R68W
BOTTOMHOLE: 51' FSL & 1028' FEL, SECTION 13, T1N, R68W
- "TULA 12-11HZ"
SURFACE: 2291' FSL & 507' FEL, SECTION 12, T1N, R68W
BOTTOMHOLE: 2601' FSL & 523' FEL, SECTION 36, T2N, R68W
- "TULA 12-12HZ"
SURFACE: 2291' FSL & 492' FEL, SECTION 12, T1N, R68W
BOTTOMHOLE: 50' FSL & 743' FEL, SECTION 13, T1N, R68W
- "TULA 12-13HZ"
SURFACE: 2291' FSL & 477' FEL, SECTION 12, T1N, R68W
BOTTOMHOLE: 50' FSL & 395' FEL, SECTION 36, T2N, R68W
- "TULA 12-14HZ"
SURFACE: 2291' FSL & 462' FEL, SECTION 12, T1N, R68W
BOTTOMHOLE: 50' FSL & 548' FEL, SECTION 13, T1N, R68W
- "TULA 12-15HZ"
SURFACE: 2291' FSL & 447' FEL, SECTION 12, T1N, R68W
BOTTOMHOLE: 50' FSL & 75' FEL, SECTION 36, T2N, R68W
- "TULA 12-16HZ"
SURFACE: 2291' FSL & 432' FEL, SECTION 12, T1N, R68W
BOTTOMHOLE: 50' FSL & 283' FEL, SECTION 13, T1N, R68W

WELL BORES CONTINUE
INTO SECTION 1

NOTES:

1. INDICATES SECTION CORNER
2. INDICATES CALCULATED CORNER
3. (C) INDICATES CALCULATED DIMENSION
4. BASIS OF BEARING DERIVED FROM COLORADO COORDINATE SYSTEM OF 1983 NORTH ZONE.
5. ALL MEASURED DISTANCES ARE GRID.
COMBINED SCALE FACTOR .99972059 CALCULATED FROM THE EAST 1/4 CORNER OF SECTION 12, T1N, R68W
6. WELL FOOTAGES ARE MEASURED AT RIGHT ANGLES TO THE SECTION LINES.



WELL PAD - TULA 9-12HZ

MULTI-WELL PAD PLAN
TULA 12-9HZ, TULA 12-10HZ, TULA 12-11HZ,
TULA 12-12HZ, TULA 12-13HZ, TULA 12-14HZ,
TULA 12-15HZ, TULA 12-16HZ

LOCATED IN SECTION 12, T1N,
R68W, 6TH P.M.
WELD COUNTY, COLORADO

**Kerr-McGee Oil &
Gas Onshore L.P.**

1099 18th Street
Denver, Colorado 80202

DRAWN BY

JMH

CHECKED BY

AAD

INITIAL SUBMITTAL 3/13/2018

REVISED 3/14/2017

DRAWING SIZE 8.5" X 11"

JOB NO. ANA01N68W12-01

SHEET 1D OF 1

BASLINE
Engineering - Planning - Surveying

4007 S. LINCOLN AVENUE, SUITE 405 - LOVELAND, COLORADO 80537
P: 970.353.7800 - F: 970.353.7801 - www.baselinecorp.com