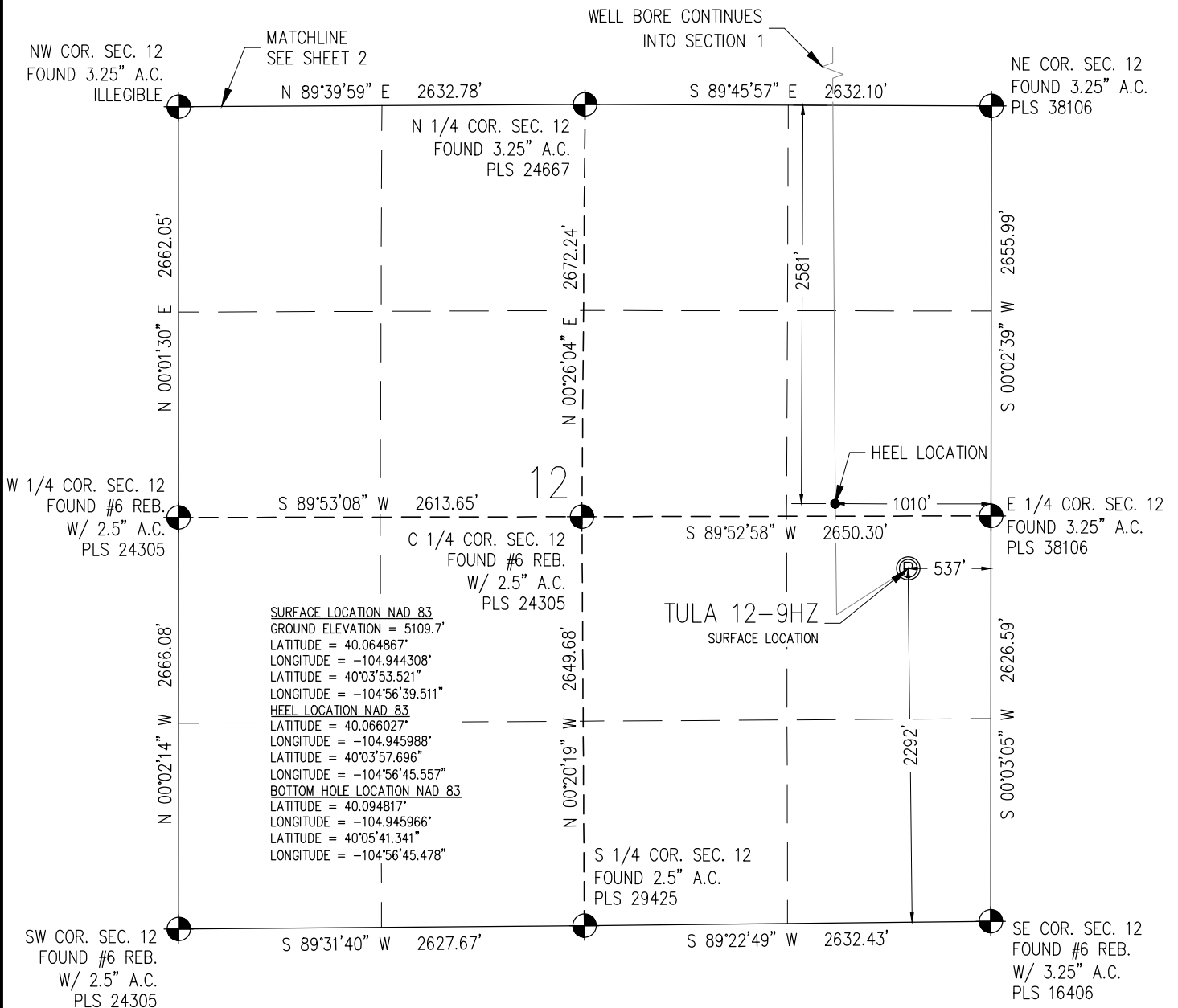


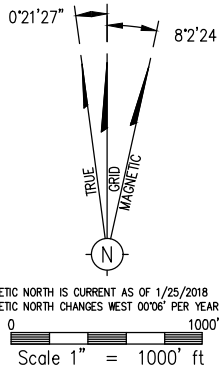
T1N, R68W



I HEREBY CERTIFY THAT THIS WELL LOCATION CERTIFICATE WAS PREPARED BY ME, OR UNDER MY DIRECT SUPERVISION, THAT THE FIELD WORK WAS COMPLETED ON 2/21/2018, THAT IT IS NOT A LAND SURVEY PLAT OR AN IMPROVEMENT SURVEY PLAT, AND THAT IT IS NOT TO BE RELIED UPON FOR ESTABLISHMENT OF FENCE, BUILDING, OR OTHER FUTURE IMPROVEMENT LINES.

AARON A. DEMO
Professional Land Surveyor Registration No. 38285
State of Colorado
FOR AND ON BEHALF OF BASELINE ENGINEERING CORP.

NOTICE
ACCORDING TO COLORADO STATE LAW YOU MUST COMMENCE ANY LEGAL ACTION BASED UPON ANY DEFECT IN THIS SURVEY WITHIN THREE YEARS AFTER YOU FIRST DISCOVER SUCH DEFECT. IN NO EVENT MAY ANY ACTION BASED UPON ANY DEFECT IN THIS SURVEY BE COMMENCED MORE THAN TEN YEARS FROM THE DATE ON THE CERTIFICATION SHOWN HEREON.



NOTES:

- INDICATES SECTION CORNER
- INDICATES CALCULATED CORNER
- (C) INDICATES CALCULATED DIMENSION
- ELEVATION BASED ON NAVD88 GEOID12B)
- BASIS OF BEARING DERIVED FROM COLORADO COORDINATE SYSTEM OF 1983 NORTH ZONE.
- ALL MEASURED DISTANCES ARE GRID. COMBINED SCALE FACTOR .99972059 CALCULATED FROM THE EAST 1/4 CORNER OF SECTION 12, T1N, R68W
- OPERATOR: JEFF VANHORN / PDOP = 1.1
- SEE ADDENDUM TO WELL LOCATION CERTIFICATE FOR EXISTING IMPROVEMENTS WITHIN 500' OF THE WELL PAD.
- WELL FOOTAGES ARE MEASURED AT RIGHT ANGLES TO THE SECTION LINES.
- THE BOTTOM OF HOLE BEARS N00°19'27\"/>

WELL PAD - TULA 9-12HZ
TULA 12-9HZ
WELL LOCATION CERTIFICATE
2292' FSL & 537' FEL NESE (SURFACE)
2581' FNL & 1010' FEL SENE (HEEL)
LOCATED IN SECTION 12
T1N, R68W, 6TH P.M.
WELD COUNTY, COLORADO
2601' FSL & 1035' FEL NESE (BOTTOM)
LOCATED IN SECTION 36
T2N, R68W, 6TH P.M.
WELD COUNTY, COLORADO

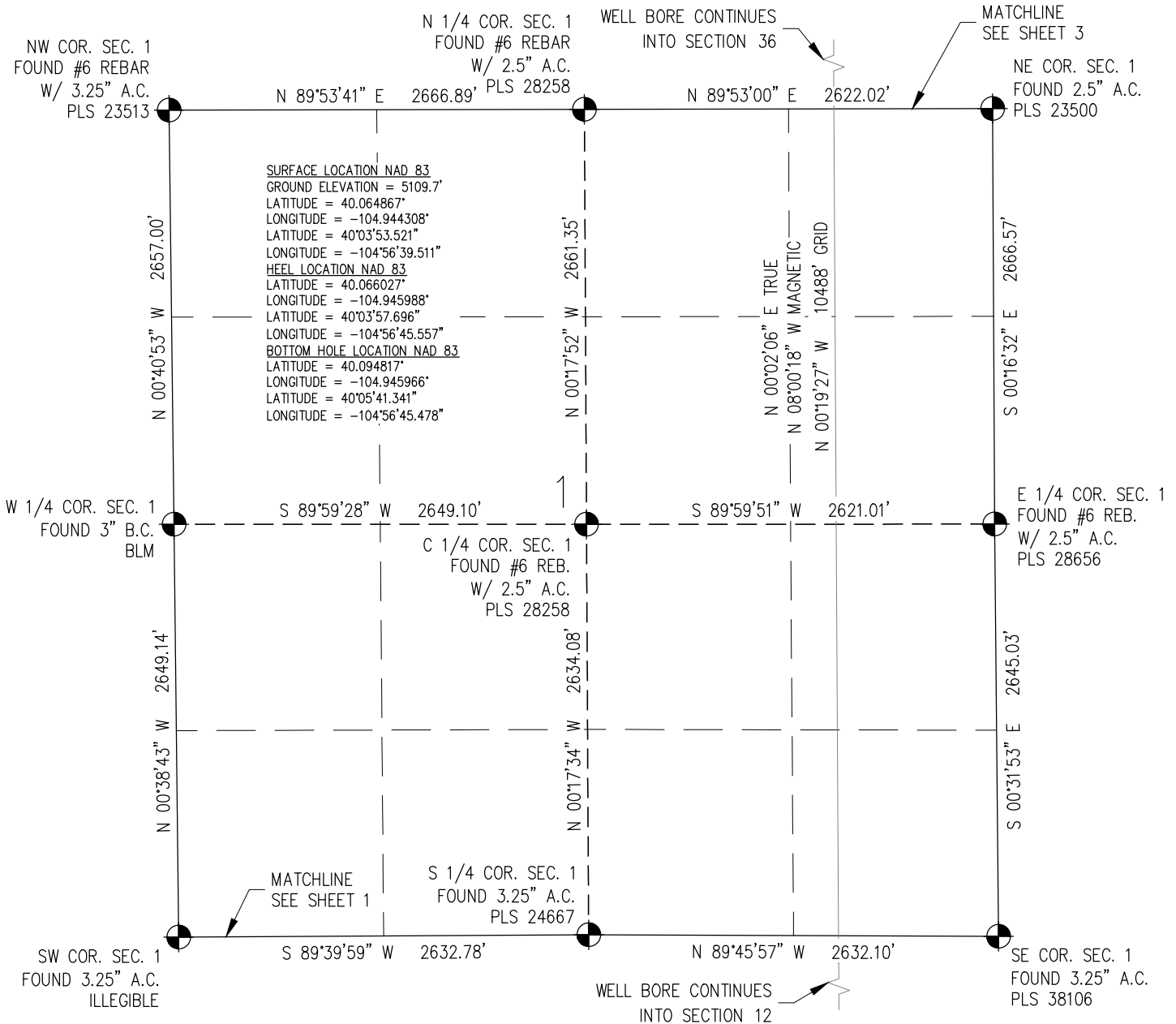
**Kerr-McGee Oil &
Gas Onshore L.P.**

1099 18th Street
Denver, Colorado 80202

DRAWN BY	JMH	CHECKED BY	AAD
INITIAL SUBMITTAL	3/13/2018		
REVISED			
DRAWING SIZE	8.5" X 11"		
JOB NO.	ANA01N68W12-01		
SHEET	1	OF	4

BASELINE
Engineering - Planning - Surveying
4007 S. LINCOLN AVENUE, SUITE 405 - LOVELAND, COLORADO 80537
P: 970.353.7800 - F: 970.353.7801 - www.baselinecorp.com

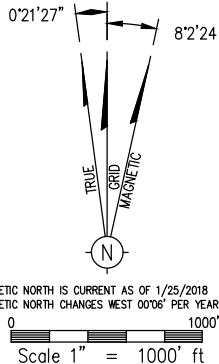
T1N, R68W



I HEREBY CERTIFY THAT THIS WELL LOCATION CERTIFICATE WAS PREPARED BY ME, OR UNDER MY DIRECT SUPERVISION, THAT THE FIELD WORK WAS COMPLETED ON 2/21/2018, THAT IT IS NOT A LAND SURVEY PLAT OR AN IMPROVEMENT SURVEY PLAT, AND THAT IT IS NOT TO BE RELIED UPON FOR ESTABLISHMENT OF FENCE, BUILDING, OR OTHER FUTURE IMPROVEMENT LINES.

AARON A. DEMO
Professional Land Surveyor Registration No. 38285
State of Colorado
FOR AND ON BEHALF OF BASELINE ENGINEERING CORP.

NOTICE
ACCORDING TO COLORADO STATE LAW YOU MUST COMMENCE ANY LEGAL ACTION BASED UPON ANY DEFECT IN THIS SURVEY WITHIN THREE YEARS AFTER YOU FIRST DISCOVER SUCH DEFECT. IN NO EVENT MAY ANY ACTION BASED UPON ANY DEFECT IN THIS SURVEY BE COMMENCED MORE THAN TEN YEARS FROM THE DATE ON THE CERTIFICATION SHOWN HEREON.



- NOTES:
- INDICATES SECTION CORNER
 - INDICATES CALCULATED CORNER
 - (C) INDICATES CALCULATED DIMENSION
 - ELEVATION BASED ON NAVD88 GEOID12B)
 - BASIS OF BEARING DERIVED FROM COLORADO COORDINATE SYSTEM OF 1983 NORTH ZONE.
 - ALL MEASURED DISTANCES ARE GRID. COMBINED SCALE FACTOR .99972059 CALCULATED FROM THE EAST 1/4 CORNER OF SECTION 12, T1N, R68W
 - OPERATOR: JEFF VANHORN / PDOP = 1.1
 - SEE ADDENDUM TO WELL LOCATION CERTIFICATE FOR EXISTING IMPROVEMENTS WITHIN 500' OF THE WELL PAD.
 - WELL FOOTAGES ARE MEASURED AT RIGHT ANGLES TO THE SECTION LINES.
 - THE BOTTOM OF HOLE BEARS N00°19'27" W 10488' FROM THE HEEL LOCATION

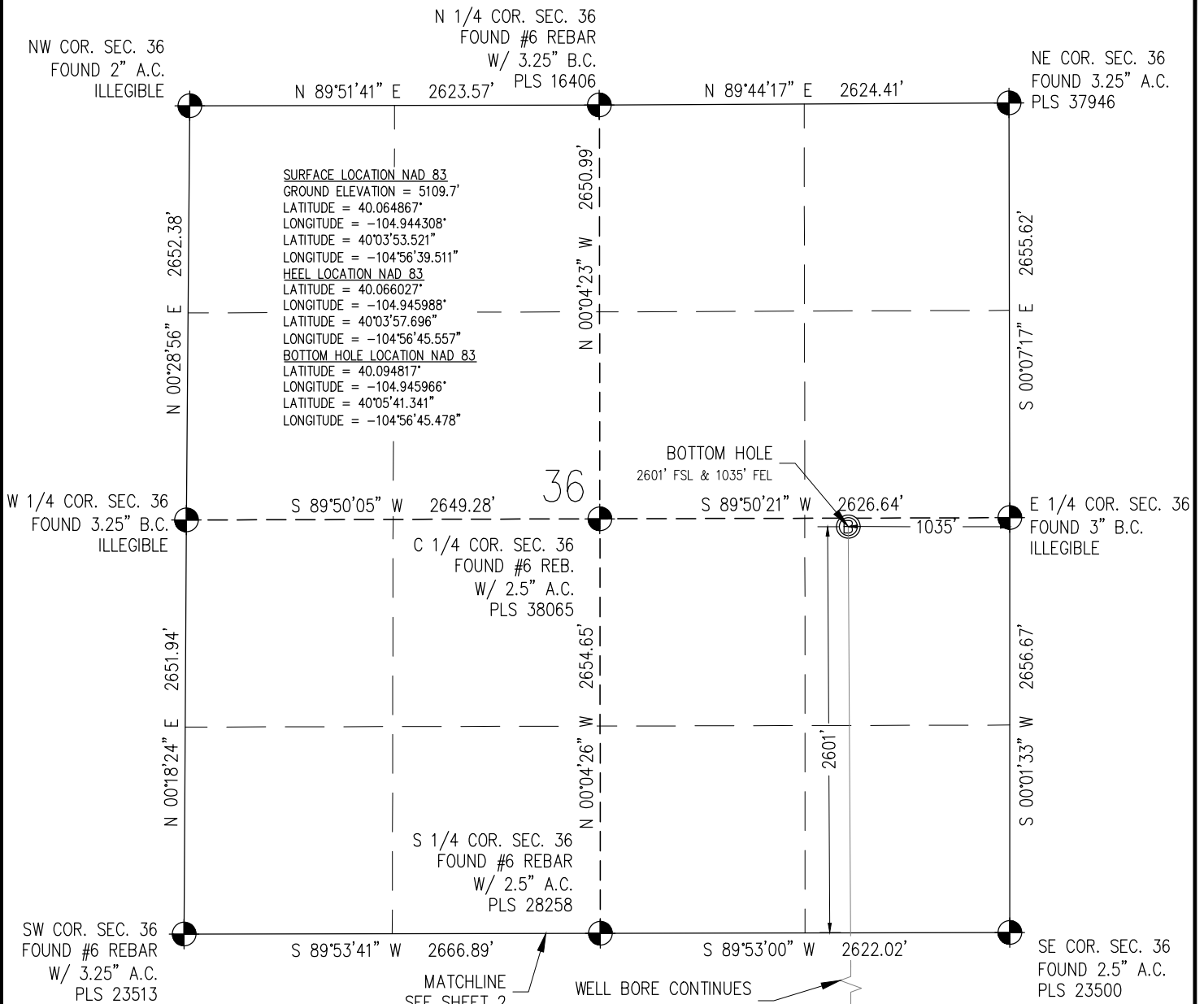
WELL PAD - TULA 9-12HZ
TULA 12-9HZ
WELL LOCATION CERTIFICATE
2292' FSL & 537' FEL NESE (SURFACE)
2581' FNL & 1010' FEL SENE (HEEL)
LOCATED IN SECTION 12
T1N, R68W, 6TH P.M.
WELD COUNTY, COLORADO
2601' FSL & 1035' FEL NESE (BOTTOM)
LOCATED IN SECTION 36
T2N, R68W, 6TH P.M.
WELD COUNTY, COLORADO

**Kerr-McGee Oil &
Gas Onshore L.P.**
1099 18th Street
Denver, Colorado 80202

DRAWN BY JMH	CHECKED BY AAD
INITIAL SUBMITTAL REVISED	3/13/2018
DRAWING SIZE	8.5" X 11"
JOB NO.	ANAOIN68W12-01
SHEET	2 OF 4

BASELINE
Engineering - Planning - Surveying
4007 S. LINCOLN AVENUE, SUITE 405 - LOVELAND, COLORADO 80537
P: 970.353.7800 - F: 970.353.7801 - www.baselinecorp.com

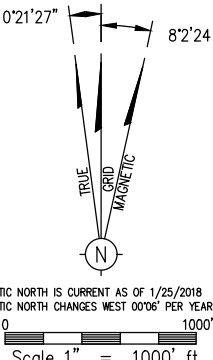
T2N, R68W



I HEREBY CERTIFY THAT THIS WELL LOCATION CERTIFICATE WAS PREPARED BY ME, OR UNDER MY DIRECT SUPERVISION, THAT THE FIELD WORK WAS COMPLETED ON 2/21/2018, THAT THIS IS NOT A LAND SURVEY PLAT OR AN IMPROVEMENT SURVEY PLAT, AND THAT IT IS NOT TO BE RELIED UPON FOR ESTABLISHMENT OF FENCE, BUILDING, OR OTHER FUTURE IMPROVEMENT LINES.

AARON A. DEMO
Professional Land Surveyor Registration No. 38285
State of Colorado
FOR AND ON BEHALF OF BASELINE ENGINEERING, P.C.

NOTICE
ACCORDING TO COLORADO STATE LAW YOU MUST COMMENCE ANY LEGAL ACTION BASED UPON ANY DEFECT IN THIS SURVEY WITHIN THREE YEARS AFTER YOU FIRST DISCOVER SUCH DEFECT. IN NO EVENT MAY ANY ACTION BASED UPON ANY DEFECT IN THIS SURVEY BE COMMENCED MORE THAN TEN YEARS FROM THE DATE ON THE CERTIFICATION SHOWN HEREON.



- NOTES:
1. INDICATES SECTION CORNER
 2. INDICATES CALCULATED CORNER
 3. (C) INDICATES CALCULATED DIMENSION
 4. ELEVATION BASED ON NAVD88 GEOID12B)
 5. BASIS OF BEARING DERIVED FROM COLORADO COORDINATE SYSTEM OF 1983 NORTH ZONE.
 6. ALL MEASURED DISTANCES ARE GRID. COMBINED SCALE FACTOR .99972059 CALCULATED FROM THE EAST 1/4 CORNER OF SECTION 12, T1N, R68W
 7. OPERATOR: JEFF VANHORN / PDOP = 1.1
 8. SEE ADDENDUM TO WELL LOCATION CERTIFICATE FOR EXISTING IMPROVEMENTS WITHIN 500' OF THE WELL PAD.
 9. WELL FOOTAGES ARE MEASURED AT RIGHT ANGLES TO THE SECTION LINES.
 10. THE BOTTOM OF HOLE BEARS N00°19'27" W 10488' FROM THE HEEL LOCATION

WELL PAD - TULA 9-12HZ
TULA 12-9HZ
WELL LOCATION CERTIFICATE
2292' FSL & 537' FEL NESE (SURFACE)
2581' FNL & 1010' FEL SENE (HEEL)
LOCATED IN SECTION 12
T1N, R68W, 6TH P.M.
WELD COUNTY, COLORADO
2601' FSL & 1035' FEL NESE (BOTTOM)
LOCATED IN SECTION 36
T2N, R68W, 6TH P.M.
WELD COUNTY, COLORADO

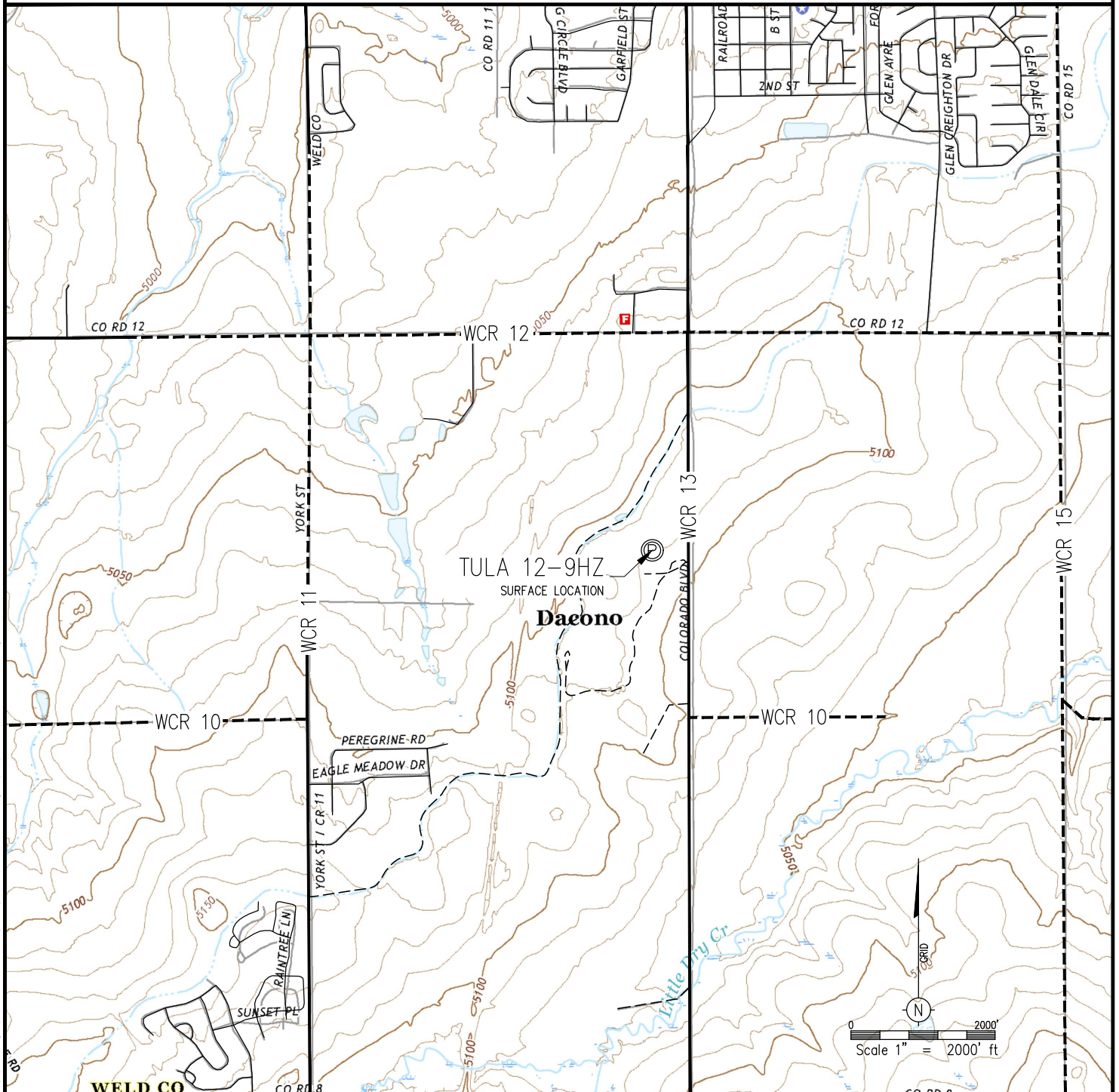
**Kerr-McGee Oil &
Gas Onshore L.P.**
1099 18th Street
Denver, Colorado 80202

DRAWN BY JMH	CHECKED BY AAD
INITIAL SUBMITTAL REVISED	3/13/2018
DRAWING SIZE	8.5" X 11"
JOB NO.	ANA01N68W12-01
SHEET	3 of 4

BASELINE
Engineering - Planning - Surveying
4007 S. LINCOLN AVENUE, SUITE 405 - LOVELAND, COLORADO 80537
P: 970.353.7800 - F: 970.353.7801 - www.baselinecorp.com

GENERAL LOCATION MAP TULA 12-9HZ WELL

N1/2 SE1/4 SECTION 12, TOWNSHIP 1 NORTH, RANGE 68 WEST, 6TH P.M.



Scale 1" = 2000' ft

- ⊙ PROPOSED WELL
- ROAD - PRIVATE - GRAVEL - EXISTING
- ROAD - COUNTY - GRAVEL - EXISTING
- ROAD - COUNTY - PAVED - EXISTING
- ROAD - SUBDIVISION - GRAVEL - EXISTING
- ROAD - SUBDIVISION - PAVED - EXISTING

DATA SOURCES:
- TOPO MAP COURTESY OF
GOOGLE EARTH

WELL PAD - TULA 9-12HZ

**Kerr-McGee Oil &
Gas Onshore L.P.**

1099 18th Street
Denver, Colorado 80202

DRAWN BY	JMH	CHECKED BY	AAD
INITIAL SUBMITTAL	3/13/2018		
REVISED			
DRAWING SIZE	8.5" X 11"		
JOB NO.	ANA01N68W12-01		
SHEET	4 OF 4		

BASELINE
Engineering - Planning - Surveying

4007 S. LINCOLN AVENUE, SUITE 405 - LOVELAND, COLORADO 80537
P: 970.363.7800 - F: 970.363.7801 - www.baselinecorp.com