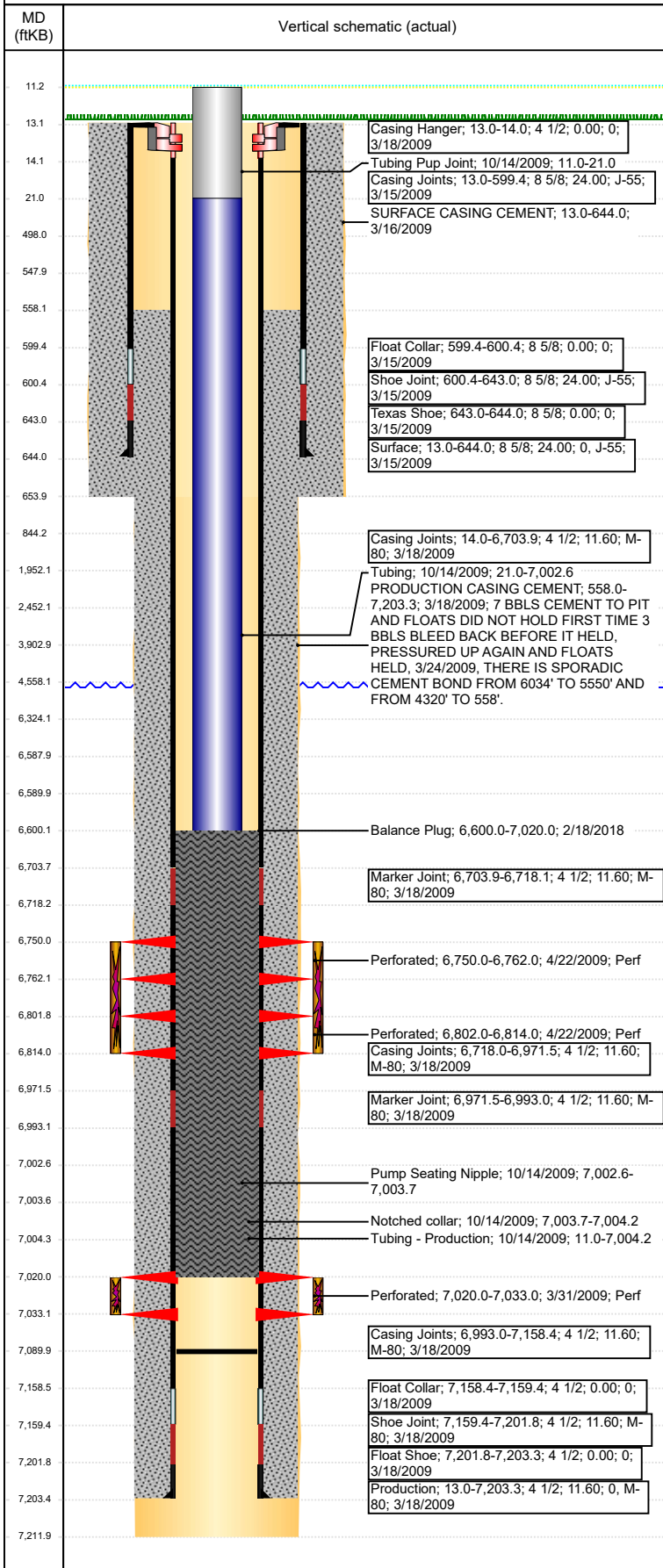


Wellbore Schematic Input Report

Well Name: DECHANT D07-21

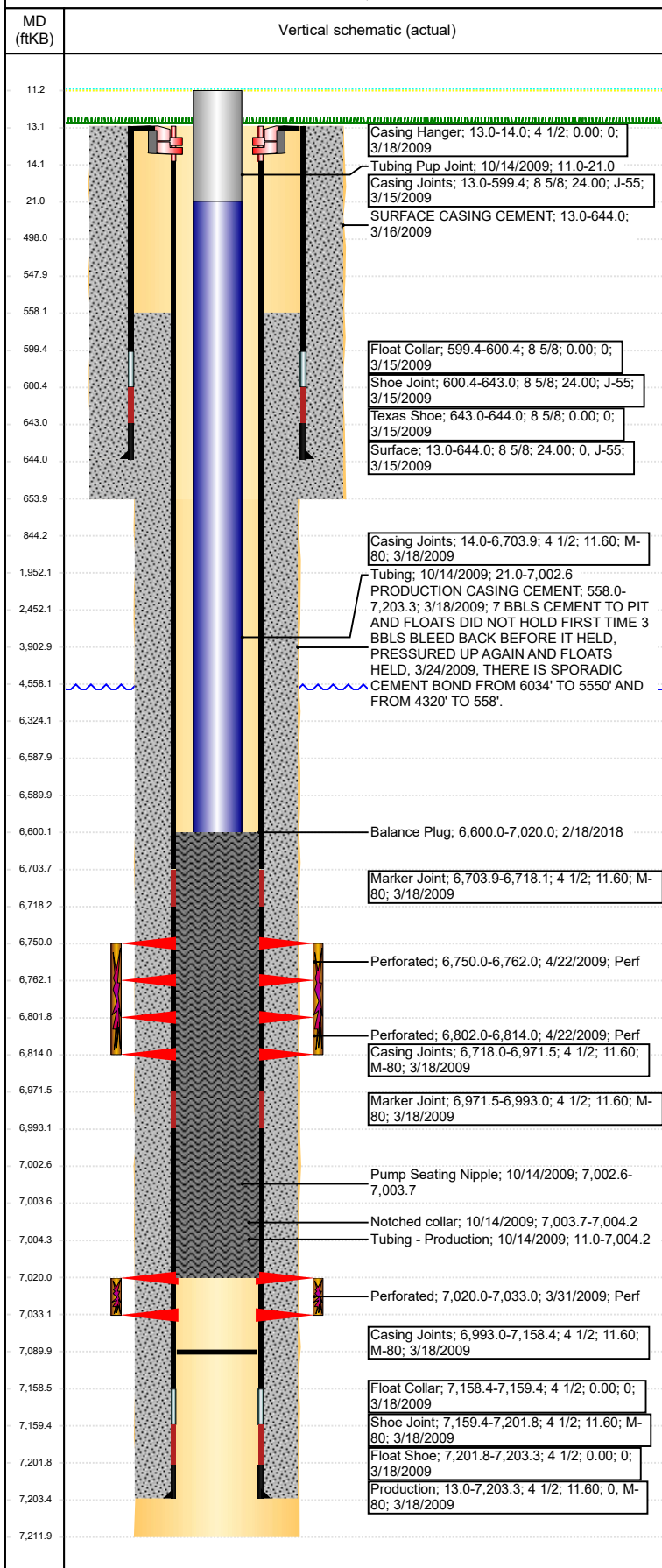
VERTICAL - ORIGINAL HOLE, 9/7/2018 1:47:56 PM



Well Header							
API 05-123-29004		Well Report Center 425683117			Well Configuration Type VERTICAL		
Original KB Elevation (ft) 4,817		KB - GL / MSL (ftKB) 13.00		Spud Date 3/15/2009		P & A Date	
Production Route C1-03			Well Production Status TA				SoRT Ignore Yes
Directions To Well WCR 49 & WCR 34, EAST 4/10THS, NORTH 0.4, NORTH EAST 0.2 INTO					Actual Latitude (°) 40.23937323	Actual Longitude (°) -104.59352409	
Comment 318Ae LOCATION							
Congressional Location							
Quarter 3 NW	Quarter 4 SE	Section 7	Township 3	Twntshp N/S Dir N	Range 64	Range E/W Dir W	
Rig Operator							
Rig Operator							
Plug Back Total Depths							
Date	Depth (ftKB)	Method			Com		
2/8/2018	7,090.0	TAG					
Wellbore Sections							
Section Des		Size (in)		Act Top, MD (ftKB)		Act Btm, MD (ftKB)	
SURFACE		12 1/4		13		654	
PRODUCTION		7 7/8		654		7,212	
Zone Statuses							
Zone Name		Status Date			Status		
CODELL		2/18/2018			TA		
NIOBRARA		2/18/2018			TA		
Casing Strings							
Surface, 644.0ftKB							
Casing Description Surface	Run Date 3/15/2009	OD (in) 8 5/8	Wt/Len (l... 24.00	Grade J-55	Top, MD (ft... 13.0	MD (ftKB) 644.0	
Production, 7,203.3ftKB							
Casing Description Production	Run Date 3/18/2009	OD (in) 4 1/2	Wt/Len (l... 11.60	Grade M-80	Top, MD (ft... 13.0	MD (ftKB) 7,203.3	
Cement							
Des		Start Date		Top (ftKB)		Btm (ftKB)	
SURFACE CASING CEMENT		3/16/2009		13.0		644.0	
PRODUCTION CASING CEMENT		3/18/2009		558.0		7,203.3	
Balance Plug		2/18/2018		6,600.0		7,020.0	
Proposed Cement							
Des				Top (ftKB)		Btm (ftKB)	
				498.0		548.0	
Balance Plug				6,324.0		6,588.0	
Balance Plug				3,903.0		4,558.0	
Balance Plug				1,952.0		2,452.0	
Balance Plug				548.0		844.0	
Balance Plug				13.0		498.0	
Tubing Strings							
Tubing Description Tubing - Production	Run Date 10/14/2009	String... 2 3/8	ID (in) 2.00	Wt (lb/ft) 4.70	Grade J-55	Len (ft) 6,993.22	Set De... 7,003.0
Tubing Components							
Item Des	OD (in)	Wt (lb/ft)	Grade	Jts	Len (ft)	Btm (ftKB)	Btm (TVD) (ftKB)
Tubing Pup Joint	2 3/8	4.70	J-55	1	10.00	21.0	
Tubing	2 3/8	4.70	J-55	226	6,981.57	7,002.6	
Pump Seating Nipple	2 3/8			1	1.10	7,003.7	7,002.5
Notched collar	3 1/16			1	0.55	7,004.2	7,003.0
Other In Hole							
Run Date	Des			OD (in)	Top (ftKB)	Btm (ftKB)	
Proposed Other In Hole							
Des		OD (in)		Top (ftKB)		Btm (ftKB)	
Cast Iron Bridge Plug		4		6,588.0		6,590.0	

Well Name: DECHANT D07-21

VERTICAL - ORIGINAL HOLE, 9/7/2018 1:47:58 PM



Logs			
Date	Type	Top, MD (ftKB)	Btm, MD (ftKB)
3/18/2009	Caliper/Comp. Density/Neutron/GR/SP/ML	2,790.0	7,186.0
3/18/2009	DIL/GR/SP/Caliper	645.0	7,206.0
3/24/2009	CBL/CCL/GR	440.0	7,123.0
3/8/2017	GYRO	0.0	6,950.0

Perforation Data				
Linked Zone	Sum of Entered Shot Total	Top (ftKB)	Btm (ftKB)	Date
NIOBRARA, ORIGINAL HOLE	24	6,750.00	6,762.00	4/22/2009
NIOBRARA, ORIGINAL HOLE	24	6,802.00	6,814.00	4/22/2009
CODELL, ORIGINAL HOLE	52	7,020.00	7,033.00	3/31/2009
Total (Sum)	100			

Job Supply Amounts					
Supply Item Des	Type	Uni...	Job Category	Total...	Total...