

Proposed
Access Road

APPROX. AREA OF MAX. DISTURBANCE

Approx. Stockpile Location

Existing
Ditch

Existing
Fence

Existing
Well

Edge of
Pivot Circle

Existing
Canal

ESTIMATED FINISHED GRADE ELEVATION = 4560'

- NOTES:**
- Flare stack is to be located a min. of 100' from the wellhead.
 - Existing ground grade does not exceed 10% slope.

APPROXIMATE SURFACE DISTURBANCE AREAS		
	DISTANCE	ACRES
APPROX. UN-RECLAIMED SITE DISTURBANCE	NA	±0.956
APPROX. RECLAIMED SITE DISTURBANCE	NA	±5.445
APPROX. TOTAL WELL SITE DISTURBANCE	NA	±6.401
30' WIDE ACCESS ROAD R-O-W DISTURBANCE	±2396'	±1.650
TOTAL SURFACE USE AREA		±8.051

HIGHPOINT OPERATING CORPORATION

PARK 4-63 4 NE PAD
SE 1/4 NE 1/4, SECTION 4, T4N, R63W, 6th P.M.
WELD COUNTY, COLORADO

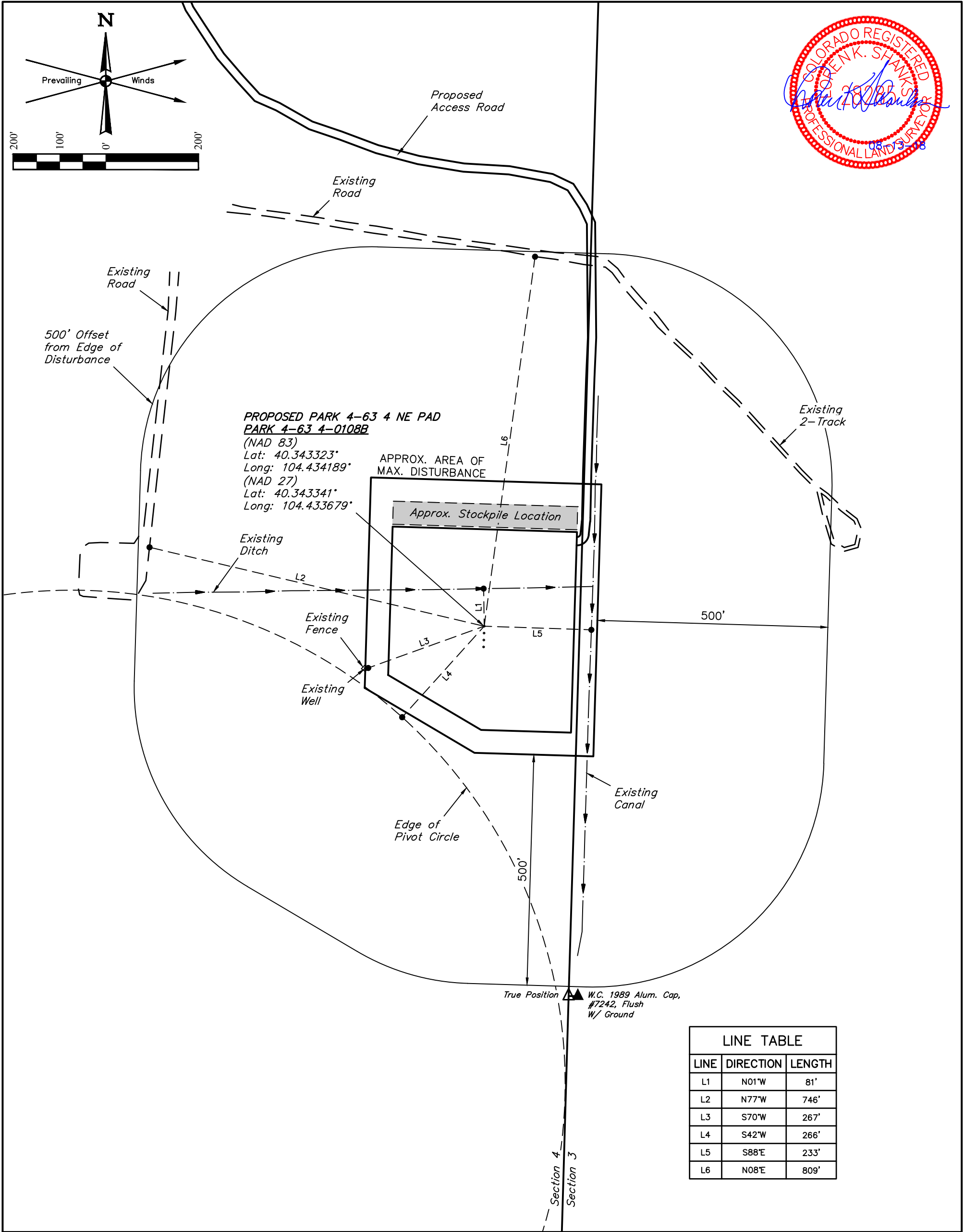
SURVEYED BY	MATTHEW MILLER, D.E.	08-06-18	SCALE
DRAWN BY	C.C.	08-07-18	1" = 60'

CONSTRUCTION LAYOUT

FIGURE #1



UELS, LLC
Corporate Office * 85 South 200 East
Vernal, UT 84078 * (435) 789-1017



LINE TABLE		
LINE	DIRECTION	LENGTH
L1	N01°W	81'
L2	N77°W	746'
L3	S70°W	267'
L4	S42°W	266'
L5	S88°E	233'
L6	N08°E	809'

PLANT COMMUNITY

☐ DISTURBED GRASSLAND

☐ NATIVE GRASSLAND

☐ SHRUB LAND

☐ PLAINS RIPARIAN

☐ MOUNTAIN RIPARIAN

☐ FOREST LAND

☐ WETLANDS AQUATIC

☐ ALPINE

☒ OTHER (Describe): CROP LAND

CURRENT LAND USE

CROP LAND:☒ IRRIGATED

NON-CROP LAND:☐ RANGELAND

SUBDIVIDED:☐ INDUSTRIAL

☐ DRY LAND

☐ TIMBER

☐ COMMERCIAL

☐ IMPROVED PASTURE

☐ RECREATIONAL

☐ RESIDENTIAL

☐ HAY MEADOW

☐ OTHER (Describe)

☐ CRP

FUTURE LAND USE

CROP LAND:☒ IRRIGATED

NON-CROP LAND:☐ RANGELAND

SUBDIVIDED:☐ INDUSTRIAL

☐ DRY LAND

☐ TIMBER

☐ COMMERCIAL

☐ IMPROVED PASTURE

☐ RECREATIONAL

☐ RESIDENTIAL

☐ HAY MEADOW

☐ OTHER (Describe)

☐ CRP

NOTES:

HIGHPOINT OPERATING CORPORATION

PARK 4-63 4 NE PAD
SE 1/4 NE 1/4, SECTION 4, T4N, R63W, 6th P.M.
WELD COUNTY, COLORADO

SURVEYED BY	MATTHEW MILLER, D.E.	08-06-18	SCALE
DRAWN BY	C.C.	08-07-18	1" = 200'
LOCATION DRAWING		FIGURE #2	



UELS, LLC
Corporate Office * 85 South 200 East
Vernal, UT 84078 * (435) 789-1017