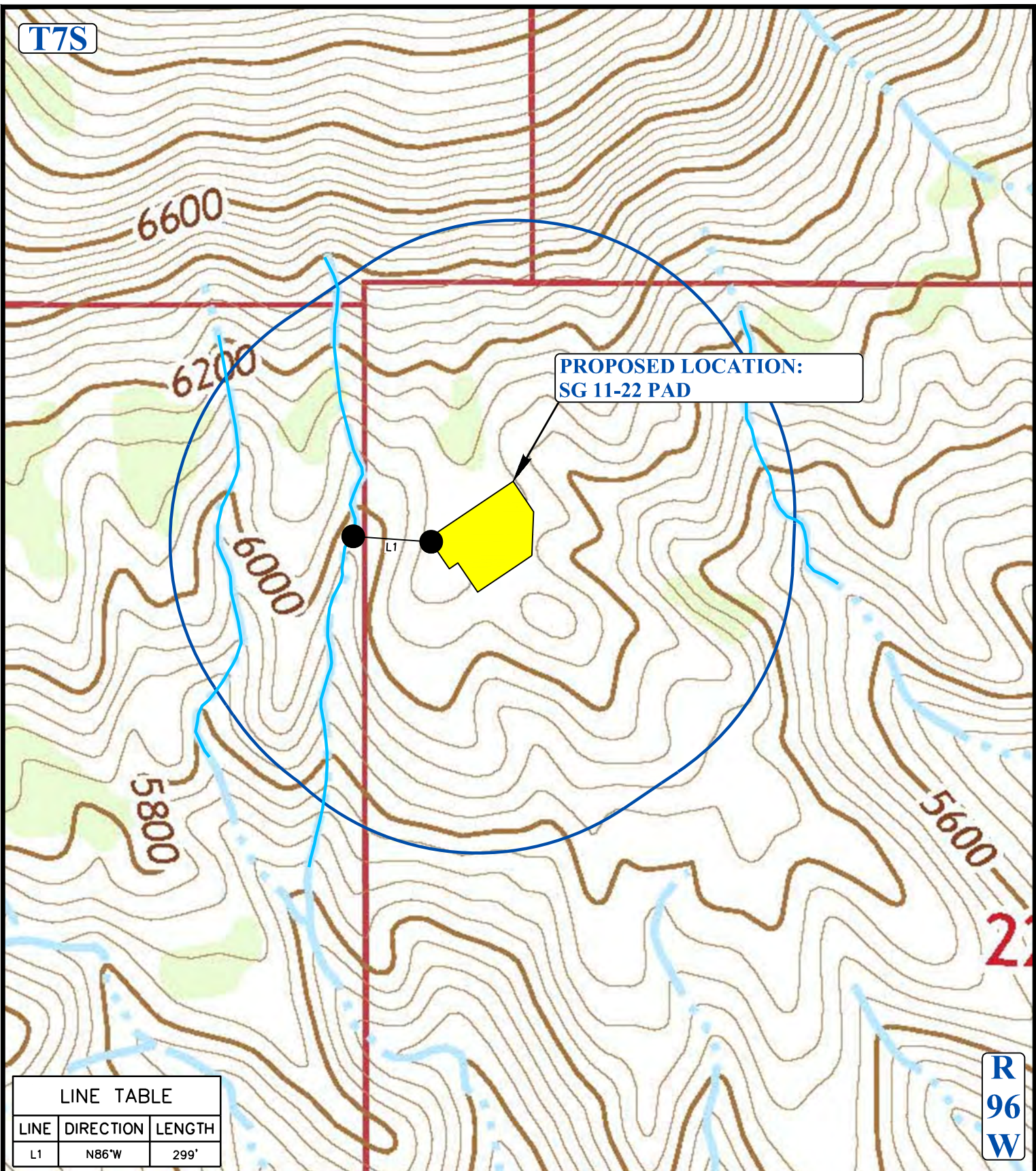


T7S



R
96
W

LINE TABLE		
LINE	DIRECTION	LENGTH
L1	N86°W	299'

LEGEND:

- EXISTING DRAINAGE
- 1000' OFFSET BOUNDARY



TEP Rocky Mountain LLC

SG 11-22 PAD
NW 1/4 NW 1/4, SECTION 22, T7S, R96W, 6th P.M.
GARFIELD COUNTY, COLORADO

SURVEYED BY	BART HUNTING, C.R.	02-16-18	SCALE
DRAWN BY	L.K.	08-30-18	1 : 6,000
HYDROLOGY MAP			TOPO W



UELS, LLC
Corporate Office * 85 South 200 East
Vernal, UT 84078 * (435) 789-1017