

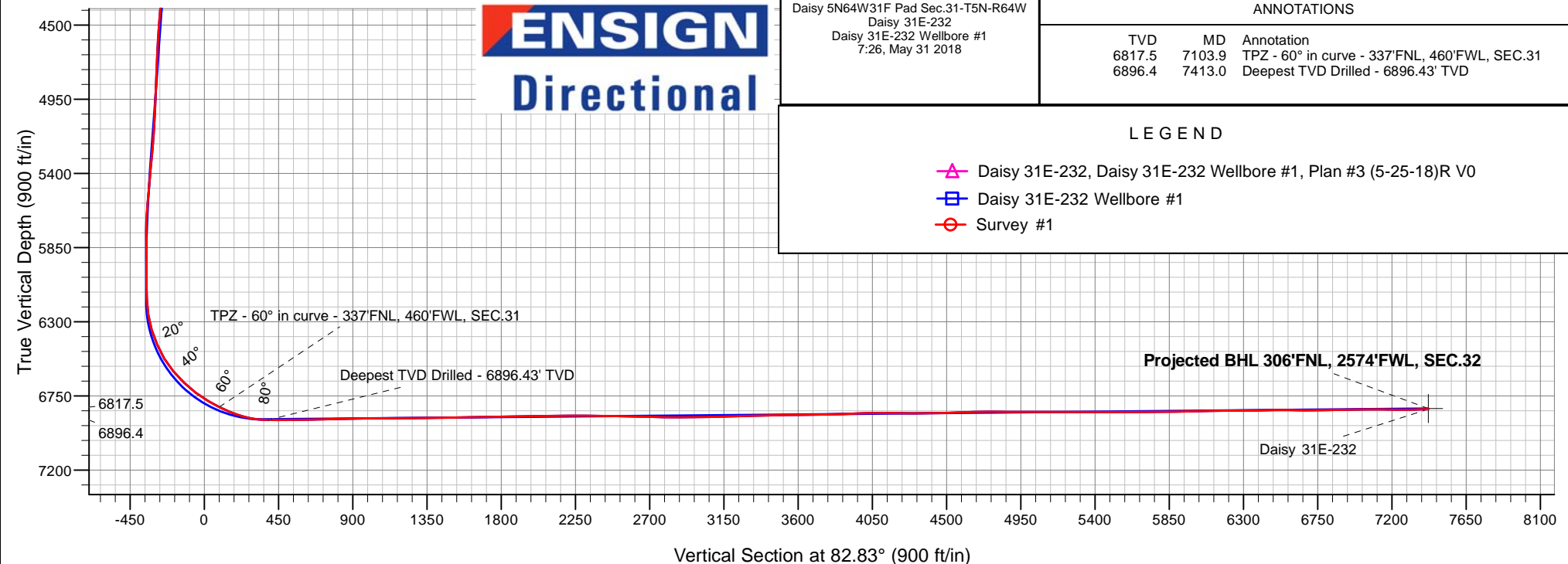
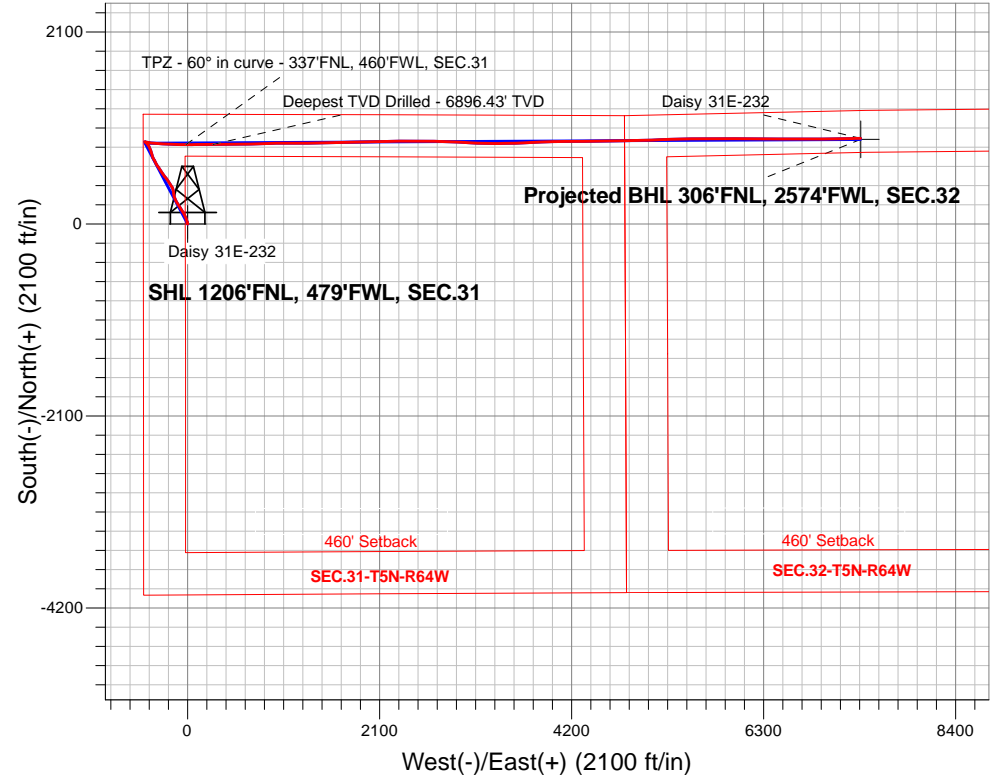
PDC Energy Inc. DJ Basin

Well Name: **Daisy 31E-232**

Surface Location: Daisy 5N64W31F Pad Sec.31-T5N-R64W
 North American Datum 1983 , US State Plane 1983, Colorado Northern Zone
 Ground Elevation: 4774.0
 +N/-S+E/-W Northing Easting Latitude Longitude Slot
 0.0 0.0375093.28 3250713.29 40.359541 -104.600328
 Original Well Elev WELL @ 4797.0ft (Original Well Elev)

FINAL SURVEY

Projected Bottom Hole Location
14,500'MD 6830'TVD 938'N & 7361'E of SHL
91.9 degree Incl @ 88.7 degree AZM





PDC Energy Inc. DJ Basin

SEC.31-T5N-R64W

Daisy 5N64W31F Pad Sec.31-T5N-R64W

Daisy 31E-232

Daisy 31E-232 Wellbore #1

Survey: Survey #1

Standard Survey Report

31 May, 2018

Company:	PDC Energy Inc. DJ Basin	Local Co-ordinate Reference:	Well Daisy 31E-232
Project:	SEC.31-T5N-R64W	TVD Reference:	WELL @ 4797.0ft (Original Well Elev)
Site:	Daisy 5N64W31F Pad Sec.31-T5N-R64W	MD Reference:	WELL @ 4797.0ft (Original Well Elev)
Well:	Daisy 31E-232	North Reference:	True
Wellbore:	Daisy 31E-232 Wellbore #1	Survey Calculation Method:	Minimum Curvature
Design:	Daisy 31E-232 Wellbore #1	Database:	US_EDM

Project	SEC.31-T5N-R64W, Weld County, CO		
Map System:	US State Plane 1983	System Datum:	Mean Sea Level
Geo Datum:	North American Datum 1983		Using Well Reference Point
Map Zone:	Colorado Northern Zone		Using geodetic scale factor

Site	Daisy 5N64W31F Pad Sec.31-T5N-R64W				
Site Position:		Northing:	1,375,063.36 usft	Latitude:	40.359460
From:	Lat/Long	Easting:	3,250,679.51 usft	Longitude:	-104.600450
Position Uncertainty:	0.0 ft	Slot Radius:	13-3/16 "	Grid Convergence:	0.58 °

Well	Daisy 31E-232					
Well Position	+N/-S	0.0 ft	Northing:	1,375,093.28 usft	Latitude:	40.359541
	+E/-W	0.0 ft	Easting:	3,250,713.29 usft	Longitude:	-104.600328
Position Uncertainty		0.0 ft	Wellhead Elevation:	0.0 ft	Ground Level:	4,774.0 ft

Wellbore	Daisy 31E-232 Wellbore #1				
Magnetics	Model Name	Sample Date	Declination (°)	Dip Angle (°)	Field Strength (nT)
	HDGM	4/12/2018	8.22	66.88	52,261

Design	Daisy 31E-232 Wellbore #1				
Audit Notes:					
Version:	1.0	Phase:	ACTUAL	Tie On Depth:	0.0
Vertical Section:	Depth From (TVD) (ft)	+N/-S (ft)	+E/-W (ft)	Direction (°)	
	0.0	0.0	0.0	82.83	

Survey Program	Date	5/31/2018			
From (ft)	To (ft)	Survey (Wellbore)	Tool Name	Description	
154.0	14,500.0	Survey #1 (Daisy 31E-232 Wellbore #1)	MWD	MWD - Standard	

Survey										
Measured Depth (ft)	Inclination (°)	Azimuth (°)	Vertical Depth (ft)	+N/-S (ft)	+E/-W (ft)	Vertical Section (ft)	Dogleg Rate (°/100usft)	Build Rate (°/100usft)	Turn Rate (°/100usft)	
0.0	0.00	0.00	0.0	0.0	0.0	0.0	0.00	0.00	0.00	
1.0	0.00	329.90	1.0	0.0	0.0	0.0	0.00	0.00	0.00	
SHL 1206°FNL, 479°FNL, SEC.31										
154.0	0.20	329.90	154.0	0.2	-0.1	-0.1	0.13	0.13	0.00	
249.0	0.30	320.80	249.0	0.6	-0.4	-0.3	0.11	0.11	-9.58	
345.0	0.30	255.70	345.0	0.7	-0.8	-0.7	0.34	0.00	-67.81	
440.0	1.20	327.40	440.0	1.5	-1.6	-1.4	1.20	0.95	75.47	
536.0	2.40	345.70	535.9	4.3	-2.6	-2.0	1.37	1.25	19.06	
631.0	3.70	349.20	630.8	9.2	-3.7	-2.5	1.38	1.37	3.68	
727.0	5.60	348.90	726.5	16.9	-5.1	-3.0	1.98	1.98	-0.31	
823.0	7.60	350.30	821.8	27.7	-7.1	-3.6	2.09	2.08	1.46	

Company:	PDC Energy Inc. DJ Basin	Local Co-ordinate Reference:	Well Daisy 31E-232
Project:	SEC.31-T5N-R64W	TVD Reference:	WELL @ 4797.0ft (Original Well Elev)
Site:	Daisy 5N64W31F Pad Sec.31-T5N-R64W	MD Reference:	WELL @ 4797.0ft (Original Well Elev)
Well:	Daisy 31E-232	North Reference:	True
Wellbore:	Daisy 31E-232 Wellbore #1	Survey Calculation Method:	Minimum Curvature
Design:	Daisy 31E-232 Wellbore #1	Database:	US_EDM

Survey									
Measured Depth (ft)	Inclination (°)	Azimuth (°)	Vertical Depth (ft)	+N/-S (ft)	+E/-W (ft)	Vertical Section (ft)	Dogleg Rate (°/100usft)	Build Rate (°/100usft)	Turn Rate (°/100usft)
918.0	9.10	343.30	915.8	41.1	-10.3	-5.1	1.90	1.58	-7.37
1,014.0	10.60	338.00	1,010.4	56.6	-15.8	-8.6	1.82	1.56	-5.52
1,109.0	10.90	338.50	1,103.8	73.0	-22.4	-13.1	0.33	0.32	0.53
1,205.0	11.30	334.30	1,198.0	89.9	-29.8	-18.3	0.94	0.42	-4.38
1,300.0	12.00	329.50	1,291.0	106.8	-38.8	-25.2	1.26	0.74	-5.05
1,396.0	12.10	329.90	1,384.9	124.1	-49.0	-33.1	0.14	0.10	0.42
1,492.0	11.90	330.80	1,478.8	141.5	-58.8	-40.7	0.29	-0.21	0.94
1,588.0	10.60	332.00	1,572.9	157.9	-67.8	-47.6	1.38	-1.35	1.25
1,683.0	9.90	325.90	1,666.4	172.4	-76.5	-54.4	1.36	-0.74	-6.42
1,779.0	10.80	323.90	1,760.9	186.5	-86.4	-62.5	1.01	0.94	-2.08
1,875.0	10.60	324.50	1,855.2	201.0	-96.8	-71.0	0.24	-0.21	0.63
1,970.0	9.90	329.70	1,948.7	215.1	-106.0	-78.4	1.22	-0.74	5.47
2,066.0	11.10	330.80	2,043.1	230.3	-114.7	-85.1	1.27	1.25	1.15
2,161.0	11.20	332.50	2,136.3	246.5	-123.4	-91.7	0.36	0.11	1.79
2,257.0	12.20	334.60	2,230.3	263.9	-132.1	-98.1	1.13	1.04	2.19
2,353.0	11.90	335.70	2,324.2	282.1	-140.5	-104.2	0.39	-0.31	1.15
2,448.0	9.80	342.20	2,417.5	298.7	-147.0	-108.6	2.56	-2.21	6.84
2,494.0	8.40	347.00	2,462.9	305.7	-149.0	-109.6	3.46	-3.04	10.43
2,636.0	9.70	355.20	2,603.1	327.7	-152.3	-110.2	1.29	0.92	5.77
2,732.0	12.10	353.50	2,697.4	345.8	-154.1	-109.7	2.52	2.50	-1.77
2,828.0	13.60	347.70	2,791.0	366.8	-157.7	-110.6	2.06	1.56	-6.04
2,924.0	15.10	338.70	2,884.0	389.5	-164.6	-114.7	2.80	1.56	-9.38
3,019.0	17.00	328.00	2,975.3	412.8	-176.5	-123.6	3.69	2.00	-11.26
3,114.0	16.50	326.60	3,066.3	435.9	-191.2	-135.4	0.68	-0.53	-1.47
3,210.0	15.70	326.90	3,158.5	458.1	-205.8	-147.1	0.84	-0.83	0.31
3,305.0	14.90	325.20	3,250.1	478.9	-219.8	-158.3	0.97	-0.84	-1.79
3,401.0	14.10	323.90	3,343.1	498.5	-233.8	-169.7	0.90	-0.83	-1.35
3,496.0	13.20	321.60	3,435.4	516.4	-247.3	-180.9	1.11	-0.95	-2.42
3,592.0	12.10	320.20	3,529.1	532.7	-260.6	-192.1	1.19	-1.15	-1.46
3,688.0	11.50	327.30	3,623.0	548.5	-272.2	-201.6	1.64	-0.63	7.40
3,783.0	11.30	327.40	3,716.2	564.3	-282.3	-209.7	0.21	-0.21	0.11
3,878.0	11.30	327.40	3,809.3	580.0	-292.3	-217.7	0.00	0.00	0.00
3,974.0	11.40	326.70	3,903.5	595.8	-302.6	-225.9	0.18	0.10	-0.73
4,069.0	10.90	324.80	3,996.7	611.0	-313.0	-234.3	0.65	-0.53	-2.00
4,165.0	11.40	321.10	4,090.9	625.8	-324.1	-243.5	0.91	0.52	-3.85
4,261.0	12.30	331.70	4,184.8	642.2	-334.9	-252.2	2.45	0.94	11.04
4,357.0	11.40	332.00	4,278.8	659.6	-344.3	-259.2	0.94	-0.94	0.31
4,452.0	10.90	331.80	4,372.0	675.8	-352.9	-265.8	0.53	-0.53	-0.21
4,548.0	10.60	329.00	4,466.3	691.3	-361.7	-272.6	0.63	-0.31	-2.92
4,643.0	10.10	332.40	4,559.7	706.2	-370.1	-279.1	0.83	-0.53	3.58
4,738.0	11.90	338.30	4,653.0	722.7	-377.6	-284.4	2.23	1.89	6.21
4,834.0	10.80	338.50	4,747.1	740.3	-384.5	-289.1	1.15	-1.15	0.21
4,931.0	13.00	343.30	4,842.0	759.2	-391.0	-293.2	2.49	2.27	4.95

Company:	PDC Energy Inc. DJ Basin	Local Co-ordinate Reference:	Well Daisy 31E-232
Project:	SEC.31-T5N-R64W	TVD Reference:	WELL @ 4797.0ft (Original Well Elev)
Site:	Daisy 5N64W31F Pad Sec.31-T5N-R64W	MD Reference:	WELL @ 4797.0ft (Original Well Elev)
Well:	Daisy 31E-232	North Reference:	True
Wellbore:	Daisy 31E-232 Wellbore #1	Survey Calculation Method:	Minimum Curvature
Design:	Daisy 31E-232 Wellbore #1	Database:	US_EDM

Survey									
Measured Depth (ft)	Inclination (°)	Azimuth (°)	Vertical Depth (ft)	+N/-S (ft)	+E/-W (ft)	Vertical Section (ft)	Dogleg Rate (°/100usft)	Build Rate (°/100usft)	Turn Rate (°/100usft)
5,026.0	12.90	345.00	4,934.6	779.7	-396.8	-296.4	0.41	-0.11	1.79
5,121.0	13.80	341.30	5,027.1	800.6	-403.2	-300.1	1.31	0.95	-3.89
5,217.0	14.20	336.90	5,120.2	822.3	-411.5	-305.6	1.18	0.42	-4.58
5,312.0	12.90	335.20	5,212.6	842.7	-420.5	-312.1	1.43	-1.37	-1.79
5,408.0	11.40	324.50	5,306.4	860.1	-430.5	-319.8	2.81	-1.56	-11.15
5,504.0	10.60	325.70	5,400.7	875.1	-441.0	-328.3	0.87	-0.83	1.25
5,600.0	8.60	314.80	5,495.3	887.5	-451.1	-336.8	2.81	-2.08	-11.35
5,696.0	5.50	301.40	5,590.6	894.9	-460.1	-344.8	3.63	-3.23	-13.96
5,790.0	3.60	290.50	5,684.3	898.3	-466.7	-350.9	2.21	-2.02	-11.60
5,886.0	0.60	61.10	5,780.2	899.6	-469.1	-353.1	4.18	-3.13	136.04
5,980.0	0.50	65.20	5,874.2	900.0	-468.3	-352.3	0.11	-0.11	4.36
6,075.0	0.40	97.50	5,969.2	900.2	-467.6	-351.6	0.28	-0.11	34.00
6,171.0	0.60	107.40	6,065.2	900.0	-466.8	-350.8	0.23	0.21	10.31
6,266.0	1.00	100.30	6,160.2	899.7	-465.5	-349.6	0.43	0.42	-7.47
6,362.0	9.50	107.90	6,255.7	897.1	-457.1	-341.6	8.86	8.85	7.92
6,458.0	18.20	97.70	6,348.8	892.6	-434.7	-319.9	9.38	9.06	-10.63
6,553.0	24.10	99.60	6,437.4	887.4	-400.8	-286.9	6.25	6.21	2.00
6,649.0	30.30	93.50	6,522.8	882.6	-357.3	-244.3	7.07	6.46	-6.35
6,744.0	41.60	92.60	6,599.5	879.7	-301.6	-189.5	11.91	11.89	-0.95
6,840.0	45.20	92.90	6,669.3	876.6	-235.8	-124.5	3.76	3.75	0.31
6,935.0	53.70	93.50	6,731.0	872.5	-163.8	-53.6	8.96	8.95	0.63
7,030.0	60.20	91.40	6,782.8	869.2	-84.3	24.9	7.09	6.84	-2.21
7,103.9	63.78	89.75	6,817.5	868.5	-19.0	89.5	5.22	4.84	-2.23
TPZ - 60° in curve - 337'FNL, 460'FWL, SEC.31									
7,125.0	64.80	89.30	6,826.6	868.7	0.0	108.4	5.22	4.85	-2.14
7,221.0	71.00	88.60	6,862.7	870.3	88.9	196.8	6.49	6.46	-0.73
7,317.0	79.60	90.50	6,887.1	871.0	181.6	288.9	9.16	8.96	1.98
7,390.5	86.95	89.81	6,895.7	870.8	254.6	361.3	10.04	10.00	-0.94
LPL 318'FNL, 736'FWL, SEC.31									
7,413.0	89.20	89.60	6,896.4	871.0	277.1	383.6	10.04	10.00	-0.93
Deepest TVD Drilled - 6896.43' TVD									
7,536.0	91.00	88.90	6,896.2	872.6	400.0	505.8	1.57	1.46	-0.57
7,631.0	91.50	89.40	6,894.1	874.0	495.0	600.2	0.74	0.53	0.53
7,726.0	91.50	90.10	6,891.7	874.4	590.0	694.5	0.74	0.00	0.74
7,822.0	90.80	88.90	6,889.7	875.2	685.9	789.8	1.45	-0.73	-1.25
7,918.0	90.60	88.00	6,888.6	877.8	781.9	885.3	0.96	-0.21	-0.94
8,012.0	90.70	87.50	6,887.5	881.5	875.8	979.0	0.54	0.11	-0.53
8,107.0	90.70	89.10	6,886.3	884.3	970.8	1,073.5	1.68	0.00	1.68
8,203.0	90.50	90.00	6,885.3	885.1	1,066.8	1,168.9	0.96	-0.21	0.94
8,298.0	90.80	89.80	6,884.2	885.2	1,161.8	1,263.2	0.38	0.32	-0.21
8,395.0	90.80	90.10	6,882.9	885.3	1,258.7	1,359.4	0.31	0.00	0.31
8,490.0	90.60	89.30	6,881.7	885.8	1,353.7	1,453.7	0.87	-0.21	-0.84
8,585.0	90.70	89.40	6,880.7	886.9	1,448.7	1,548.1	0.15	0.11	0.11
8,681.0	90.70	88.70	6,879.5	888.5	1,544.7	1,643.5	0.73	0.00	-0.73

Company:	PDC Energy Inc. DJ Basin	Local Co-ordinate Reference:	Well Daisy 31E-232
Project:	SEC.31-T5N-R64W	TVD Reference:	WELL @ 4797.0ft (Original Well Elev)
Site:	Daisy 5N64W31F Pad Sec.31-T5N-R64W	MD Reference:	WELL @ 4797.0ft (Original Well Elev)
Well:	Daisy 31E-232	North Reference:	True
Wellbore:	Daisy 31E-232 Wellbore #1	Survey Calculation Method:	Minimum Curvature
Design:	Daisy 31E-232 Wellbore #1	Database:	US_EDM

Survey									
Measured Depth (ft)	Inclination (°)	Azimuth (°)	Vertical Depth (ft)	+N/-S (ft)	+E/-W (ft)	Vertical Section (ft)	Dogleg Rate (°/100usft)	Build Rate (°/100usft)	Turn Rate (°/100usft)
8,776.0	90.70	88.60	6,878.3	890.7	1,639.7	1,738.0	0.11	0.00	-0.11
8,872.0	91.60	89.10	6,876.4	892.7	1,735.6	1,833.5	1.07	0.94	0.52
8,967.0	91.50	88.40	6,873.8	894.7	1,830.6	1,927.9	0.74	-0.11	-0.74
9,063.0	90.70	88.20	6,872.0	897.6	1,926.5	2,023.5	0.86	-0.83	-0.21
9,158.0	90.30	87.50	6,871.2	901.1	2,021.4	2,118.1	0.85	-0.42	-0.74
9,254.0	90.80	88.70	6,870.2	904.3	2,117.4	2,213.7	1.35	0.52	1.25
9,349.0	89.30	89.80	6,870.1	905.6	2,212.4	2,308.1	1.96	-1.58	1.16
9,445.0	89.10	90.10	6,871.5	905.7	2,308.4	2,403.3	0.38	-0.21	0.31
9,541.0	89.20	90.00	6,872.9	905.6	2,404.3	2,498.6	0.15	0.10	-0.10
9,636.0	89.10	89.60	6,874.3	905.9	2,499.3	2,592.9	0.43	-0.11	-0.42
9,731.0	88.60	90.10	6,876.2	906.2	2,594.3	2,687.1	0.74	-0.53	0.53
9,827.0	88.50	90.10	6,878.7	906.0	2,690.3	2,782.3	0.10	-0.10	0.00
9,923.0	89.90	92.20	6,880.0	904.1	2,786.2	2,877.3	2.63	1.46	2.19
10,019.0	91.20	93.10	6,879.1	899.6	2,882.1	2,971.9	1.65	1.35	0.94
10,114.0	91.40	92.80	6,876.9	894.7	2,977.0	3,065.4	0.38	0.21	-0.32
10,209.0	91.30	92.80	6,874.7	890.1	3,071.8	3,158.9	0.11	-0.11	0.00
10,305.0	91.10	93.10	6,872.7	885.2	3,167.7	3,253.4	0.38	-0.21	0.31
10,400.0	91.50	90.30	6,870.5	882.3	3,262.6	3,347.2	2.98	0.42	-2.95
10,497.0	91.80	90.30	6,867.7	881.8	3,359.6	3,443.4	0.31	0.31	0.00
10,592.0	90.50	88.90	6,865.8	882.5	3,454.6	3,537.7	2.01	-1.37	-1.47
10,688.0	90.70	88.90	6,864.8	884.3	3,550.5	3,633.1	0.21	0.21	0.00
10,784.0	91.00	88.00	6,863.4	886.9	3,646.5	3,728.7	0.99	0.31	-0.94
10,879.0	91.60	87.70	6,861.2	890.5	3,741.4	3,823.3	0.71	0.63	-0.32
10,974.0	91.80	87.30	6,858.4	894.6	3,836.3	3,917.9	0.47	0.21	-0.42
11,070.0	92.50	87.10	6,854.8	899.3	3,932.1	4,013.6	0.76	0.73	-0.21
11,166.0	89.00	89.40	6,853.6	902.3	4,028.0	4,109.1	4.36	-3.65	2.40
11,262.0	89.40	89.60	6,854.9	903.1	4,124.0	4,204.5	0.47	0.42	0.21
11,357.0	89.90	89.30	6,855.5	904.0	4,219.0	4,298.8	0.61	0.53	-0.32
11,453.0	90.50	89.10	6,855.1	905.3	4,315.0	4,394.2	0.66	0.63	-0.21
11,549.0	91.50	89.30	6,853.5	906.7	4,411.0	4,489.6	1.06	1.04	0.21
11,644.0	92.60	89.40	6,850.1	907.8	4,505.9	4,583.9	1.16	1.16	0.11
11,740.0	91.70	89.30	6,846.5	908.8	4,601.8	4,679.3	0.94	-0.94	-0.10
11,835.0	89.30	89.10	6,845.6	910.2	4,696.8	4,773.7	2.54	-2.53	-0.21
11,931.0	89.70	89.10	6,846.5	911.7	4,792.8	4,869.1	0.42	0.42	0.00
12,026.0	90.00	88.60	6,846.7	913.6	4,887.8	4,963.6	0.61	0.32	-0.53
12,121.0	89.80	88.40	6,846.9	916.1	4,982.7	5,058.1	0.30	-0.21	-0.21
12,217.0	89.90	88.00	6,847.1	919.1	5,078.7	5,153.7	0.43	0.10	-0.42
12,313.0	90.00	87.80	6,847.2	922.6	5,174.6	5,249.3	0.23	0.10	-0.21
12,408.0	90.10	87.30	6,847.1	926.7	5,269.5	5,344.0	0.54	0.11	-0.53
12,504.0	89.90	89.40	6,847.1	929.4	5,365.5	5,439.5	2.20	-0.21	2.19
12,599.0	89.70	88.90	6,847.5	930.8	5,460.5	5,533.9	0.57	-0.21	-0.53
12,695.0	89.80	88.60	6,847.9	932.9	5,556.4	5,629.4	0.33	0.10	-0.31
12,790.0	90.60	90.70	6,847.6	933.5	5,651.4	5,723.8	2.37	0.84	2.21

Company:	PDC Energy Inc. DJ Basin	Local Co-ordinate Reference:	Well Daisy 31E-232
Project:	SEC.31-T5N-R64W	TVD Reference:	WELL @ 4797.0ft (Original Well Elev)
Site:	Daisy 5N64W31F Pad Sec.31-T5N-R64W	MD Reference:	WELL @ 4797.0ft (Original Well Elev)
Well:	Daisy 31E-232	North Reference:	True
Wellbore:	Daisy 31E-232 Wellbore #1	Survey Calculation Method:	Minimum Curvature
Design:	Daisy 31E-232 Wellbore #1	Database:	US_EDM

Survey										
Measured Depth (ft)	Inclination (°)	Azimuth (°)	Vertical Depth (ft)	+N/-S (ft)	+E/-W (ft)	Vertical Section (ft)	Dogleg Rate (°/100usft)	Build Rate (°/100usft)	Turn Rate (°/100usft)	
12,885.0	90.80	90.70	6,846.4	932.4	5,746.4	5,817.8	0.21	0.21	0.00	
12,981.0	90.90	89.60	6,845.0	932.1	5,842.4	5,913.1	1.15	0.10	-1.15	
13,077.0	91.60	89.80	6,842.9	932.6	5,938.4	6,008.3	0.76	0.73	0.21	
13,172.0	90.70	91.40	6,841.0	931.6	6,033.4	6,102.4	1.93	-0.95	1.68	
13,267.0	90.60	90.30	6,839.9	930.2	6,128.3	6,196.5	1.16	-0.11	-1.16	
13,363.0	91.30	89.60	6,838.3	930.3	6,224.3	6,291.8	1.03	0.73	-0.73	
13,459.0	90.00	90.00	6,837.2	930.6	6,320.3	6,387.0	1.42	-1.35	0.42	
13,554.0	91.20	90.00	6,836.2	930.6	6,415.3	6,481.3	1.26	1.26	0.00	
13,650.0	89.00	90.50	6,836.1	930.2	6,511.3	6,576.5	2.35	-2.29	0.52	
13,745.0	89.50	90.10	6,837.3	929.7	6,606.3	6,670.7	0.67	0.53	-0.42	
13,841.0	90.70	90.00	6,837.1	929.6	6,702.3	6,765.9	1.25	1.25	-0.10	
13,937.0	92.30	89.80	6,834.6	929.8	6,798.2	6,861.1	1.68	1.67	-0.21	
14,032.0	89.70	89.60	6,833.0	930.3	6,893.2	6,955.4	2.74	-2.74	-0.21	
14,128.0	91.10	89.40	6,832.3	931.1	6,989.2	7,050.8	1.47	1.46	-0.21	
14,223.0	88.70	89.30	6,832.5	932.2	7,084.2	7,145.2	2.53	-2.53	-0.11	
14,319.0	89.60	88.60	6,833.9	934.0	7,180.2	7,240.6	1.19	0.94	-0.73	
14,414.0	91.50	88.70	6,833.0	936.2	7,275.1	7,335.1	2.00	2.00	0.11	
14,440.0	91.90	88.70	6,832.2	936.8	7,301.1	7,361.0	1.54	1.54	0.00	
14,500.0	91.90	88.70	6,830.2	938.2	7,361.1	7,420.6	0.00	0.00	0.00	
BHL 318°FNL, 2575°FWL, SEC.32										

Design Targets										
Target Name - hit/miss target - Shape	Dip Angle (°)	Dip Dir. (°)	TVD (ft)	+N/-S (ft)	+E/-W (ft)	Northing (usft)	Easting (usft)	Latitude	Longitude	
SHL 1206°FNL, 479°FWL - survey hits target center - Point	0.00	0.00	1.0	0.0	0.0	1,375,093.29	3,250,713.29	40.359541	-104.600328	
BHL 318°FNL, 2575°FWL - survey misses target center by 12.6ft at 14500.0ft MD (6830.2 TVD, 938.2 N, 7361.1 E) - Point	0.00	0.00	6,827.0	926.0	7,362.0	1,376,093.90	3,258,065.24	40.362080	-104.573910	

Survey Annotations					
Measured Depth (ft)	Vertical Depth (ft)	Local Coordinates			
		+N/-S (ft)	+E/-W (ft)	Comment	
7,103.9	6,817.5	868.5	-19.0	TPZ - 60° in curve - 337°FNL, 460°FWL, SEC.31	
7,413.0	6,896.4	871.0	277.1	Deepest TVD Drilled - 6896.43' TVD	

Checked By: _____ Approved By: _____ Date: _____