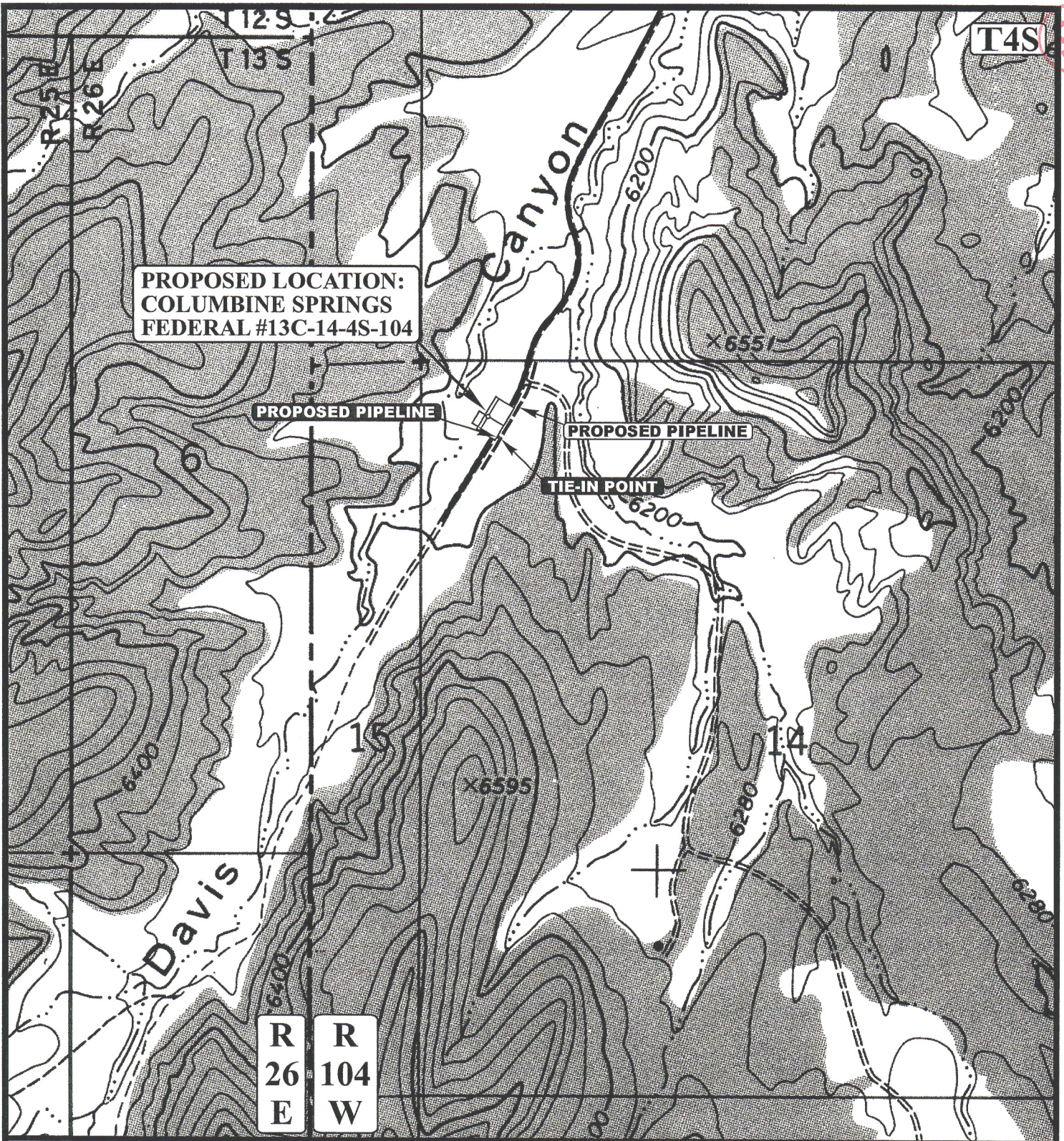


Name: DAVIS CANYON
Date: 6/1/2004
Scale: 1 inch equals 2000 feet

Location: 039.7114977° N 109.0379483° W
Caption: 14, 4S-104W



**PROPOSED LOCATION:
COLUMBINE SPRINGS
FEDERAL #13C-14-4S-104**

PROPOSED PIPELINE

PROPOSED PIPELINE

TIE-IN POINT

Davis

R 26 E
R 104 W

APPROXIMATE TOTAL PIPELINE DISTANCE = 25' +/-

LEGEND:

- EXISTING PIPELINE
- - - - - PROPOSED PIPELINE

EVERGREEN RESOURCES, INC.

**COLUMBINE SPRINGS FEDERAL #13C-14-4S-104
SECTION 14, T4S, R104W, 6th P.M.
420' FNL 511' FWL**



Uintah Engineering & Land Surveying
85 South 200 East Vernal, Utah 84078
(435) 789-1017 * FAX (435) 789-1813

TOPOGRAPHIC MAP
05 27 04
MONTH DAY YEAR
SCALE: 1" = 1000' DRAWN BY: P.M. REVISED: 00-00-00

