



August 23, 2018

Ms. Julie Murphy, Director
Colorado Oil & Gas Conservation Commission
1120 Lincoln Street, Ste. 801
Denver, Colorado 80203

RE: Rule 318.A.e. Proposed Spacing Unit 30 Day Notification Certification
Rinn Valley West N18-20-8C

Surface Location: SESE, Section 18, Township 2 North, Range 68 West
Weld County, CO

Dear Ms. Murphy:

Extraction Oil and Gas, Inc. (Extraction) is planning to drill the captioned horizontal wells in accordance with the provision of COGCC Rule 318A.e.

The proposed wellbore spacing unit consists of:

E2W2 & W2E2 of Section 18; E2W2 & W2E2 of Section 7; E2SW, W2SE & SWNE of Section 6 in Township 2 North, Range 68 West, 6th P.M.

The spacing unit is an 840-acre wellbore spacing unit for the Codell formation.

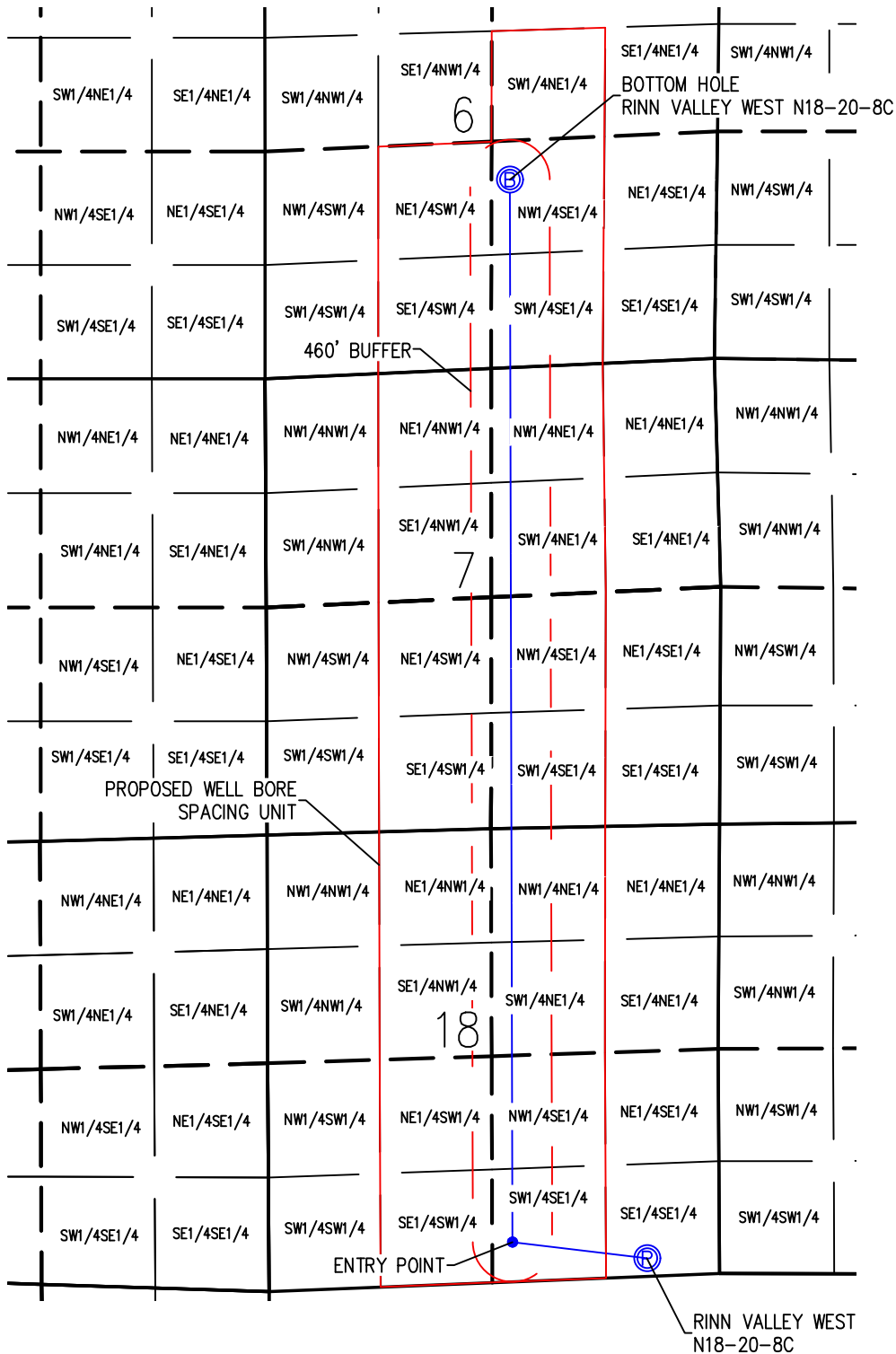
Extraction hereby certifies to the Director that all Owners within the proposed spacing unit above were notified and 30 days have passed without objection.

If you have any questions or issues regarding this permit, please contact Kelsi Welch at (720) 354-4607.

Sincerely,

Kelsi Welch
Regulatory Analyst
Extraction Oil & Gas, Inc.

WELL BORE DIAGRAM RINN VALLEY WEST PAD RINN VALLEY WEST N18-20-8C



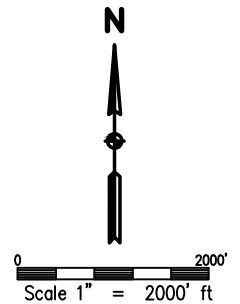
RINN VALLEY WEST N18-20-8C

SURFACE LOCATION
 SEC. 18, T2N, R68W
 GROUND ELEVATION = 4942.7'
 PDOP = 1.1
 LATITUDE = 40.132044'
 LONGITUDE = -105.039676'
 211' FSL, 841' FEL

ENTRY POINT LOCATION
 SEC. 18, T2N, R68W
 LATITUDE = 40.132579'
 LONGITUDE = -105.045252'
 460' FSL, 2400' FEL

BOTTOM HOLE LOCATION
 SEC. 6, T2N, R68W
 LATITUDE = 40.166416'
 LONGITUDE = -105.045137'
 2180' FSL, 2400' FEL

- NOTES:
- 1) THIS SKETCH DOES NOT REPRESENT A BOUNDARY SURVEY.
 - 2) THE DATUM FOR THE LATITUDES AND LONGITUDES ON THIS SKETCH IS NAD83.



LEGEND

- PROPOSED WELL HEAD
- PROPOSED BOTTOM HOLE
- ENTRY POINT



DRAWN BY	CHECKED BY
BGR	AAD
INITIAL SUBMITTAL	5/14/2018
REVISED	N/A
DRAWING SIZE	8.5" X 11"
JOB NO.	EXT02N68W17-01
SHEET	1 OF 1

BASELINE
 Engineering - Planning - Surveying

4007 S. LINCOLN AVENUE, SUITE 405 - LOVELAND, COLORADO 80537
 P: 970.363.7800 - F: 970.363.7801 - www.basincorp.com