

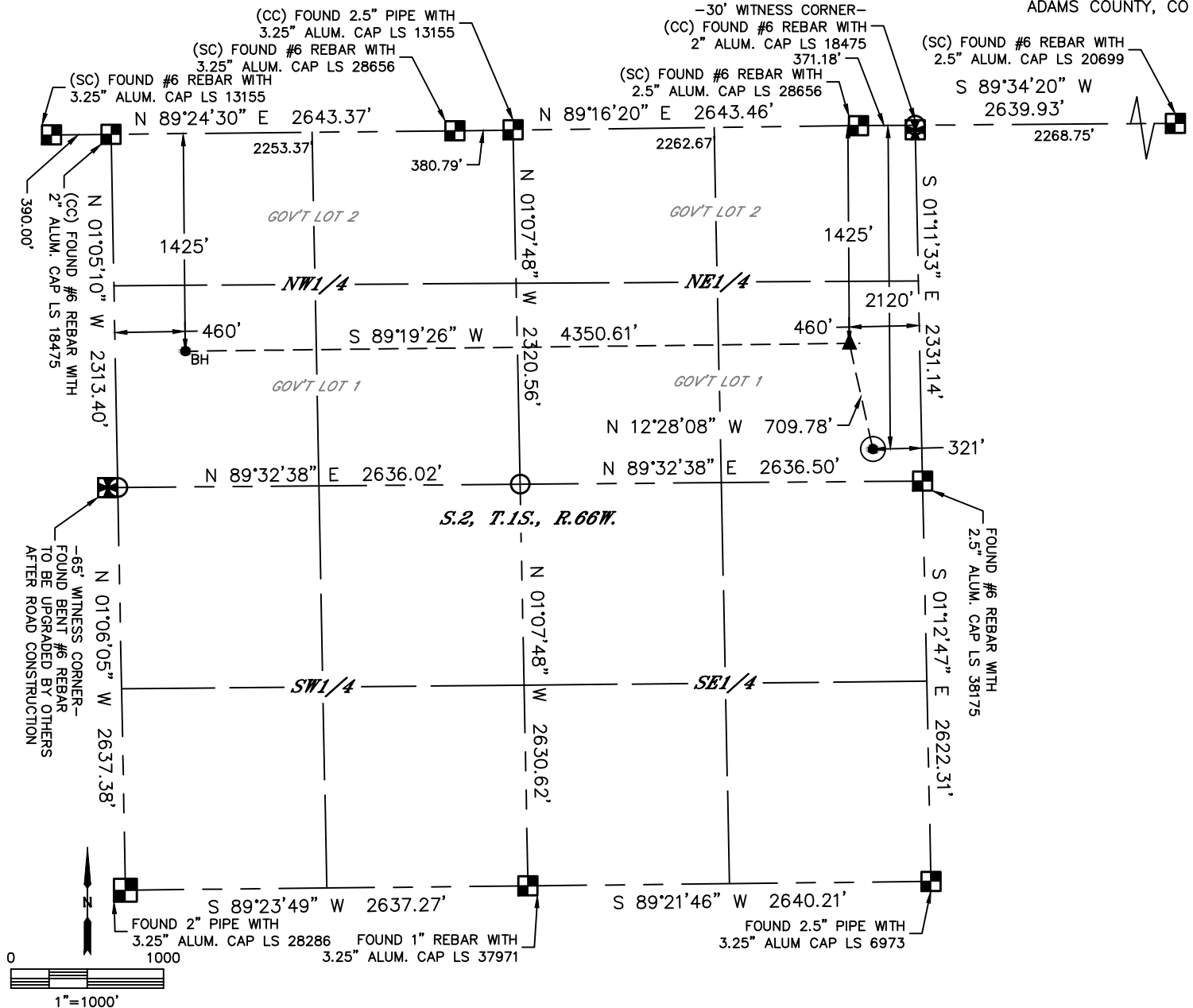


Lat40°, Inc. 6250 W. 10th Street, Unit 2, Greeley, CO 970-515-5294

WELL LOCATION CERTIFICATE

BEF WEST 17

SECTION: 2
TOWNSHIP: 1S
RANGE: 66W
6TH. P.M.
ADAMS COUNTY, CO



CLIENT: PETRO OPERATING CO.				LANDMAN: DEREK PETRIE		
INSTRUMENT OPERATOR: JAKE STILLE				SURVEY DATE: 1/15/2018		SURFACE USE: CROP LAND
SHL FOOTAGE		SHL LAT °	SHL LONG °	SHL PDOP	SHL ELEV (FT.)	SHL 1/4/1/4 SHL S-T-R
2120	FNL	321	FEL	39.99472	-104.73470	2.0 5048 SENE 2-1S-66

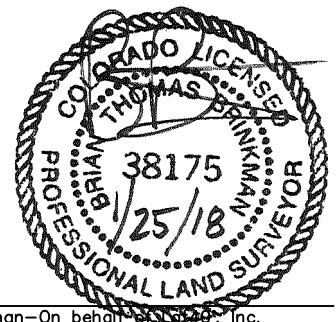
BHL FOOTAGE	BHL LAT °	BHL LONG °	BHL S-T-R	EP LAT °	EP LONG °	EP S-T-R
1425	FNL	460	FWL	39.99658	-104.75075	2-1S-66 39.99662 -104.73523 2-1S-66

LEGEND

- = ALIQUOT MONUMENT AS DESCRIBED
- = CALCULATED POSITION
- = SURFACE HOLE LOCATION (SHL)
- ▲ = ENTRY POINT LOCATION (EP)
- _{BH} = BOTTOM HOLE LOCATION (BHL)
- ⊙ = EXISTING WELL
- ⊙ = ABANDONED WELL

NOTE:

- Bearings shown are Grid Bearings of the Colorado State Plane Coordinate System, North Zone, North American Datum 1983. The lineal dimensions as contained herein are based upon the "U.S. Survey Foot."
- Distances to section lines measured at 90 degrees from said section lines.
- Ground elevations are based on an observed GPS elevation (NAVD 1988 DATUM).
- Latitude and Longitude shown are (NAD 83 DATUM).
- IMPROVEMENTS: See LOCATION DRAWING for all visible improvements within 500' of oil and gas location.
- This map does not represent a boundary survey.



Brian T. Brinkman—On behalf of Lat40°, Inc.
Colorado Licensed Professional Land Surveyor No. 38175
DATE: 1/25/2018
PROJECT#: 2017015