

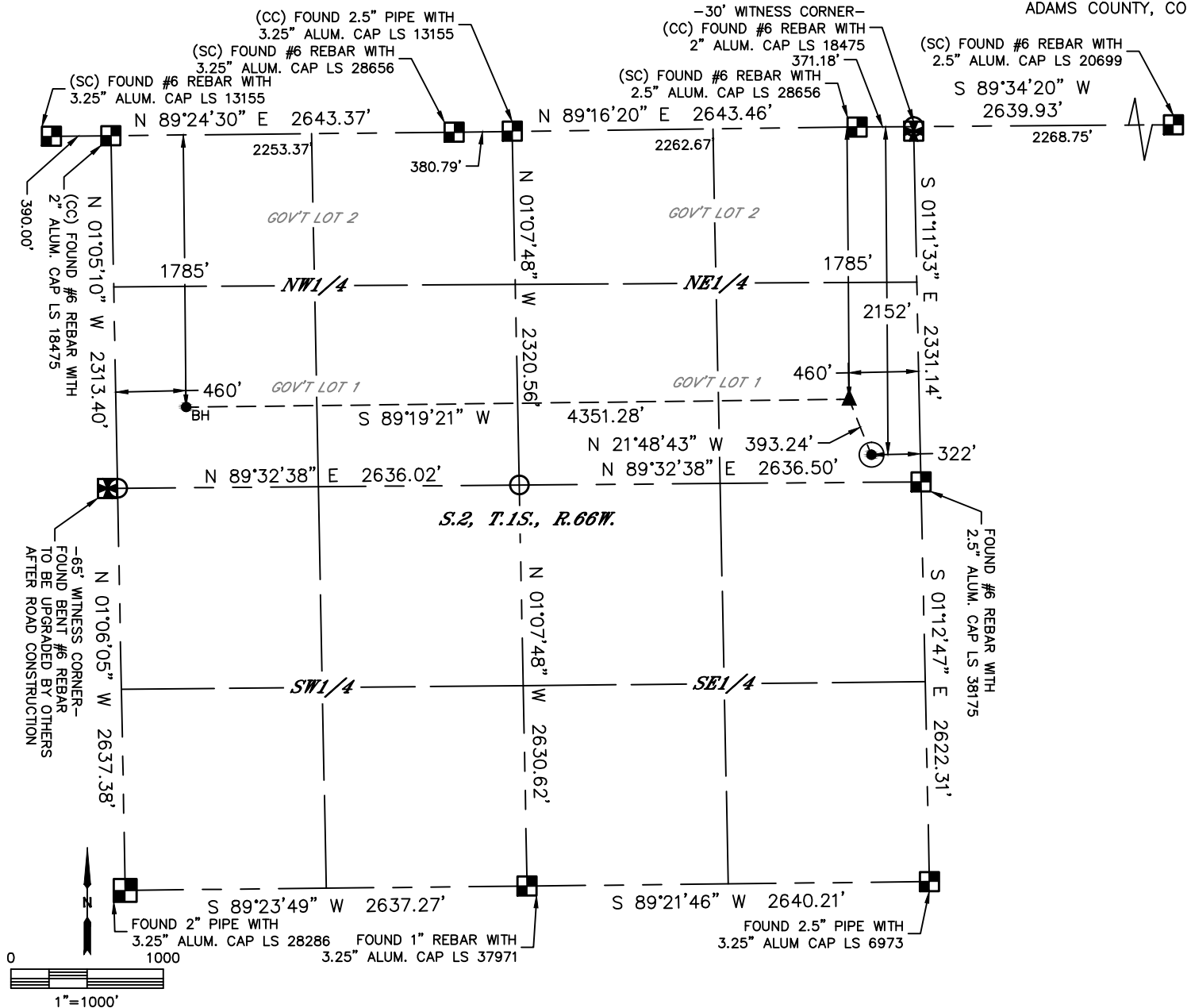


Lat40°, Inc. 6250 W. 10th Street, Unit 2, Greeley, CO 970-515-5294

# WELL LOCATION CERTIFICATE

BEF WEST 15

SECTION: 2  
TOWNSHIP: 1S  
RANGE: 66W  
6TH. P.M.  
ADAMS COUNTY, CO



|                                  |           |              |            |                        |             |                        |
|----------------------------------|-----------|--------------|------------|------------------------|-------------|------------------------|
| CLIENT: PETRO OPERATING CO.      |           |              |            | LANDMAN: DEREK PETRIE  |             |                        |
| INSTRUMENT OPERATOR: JAKE STILLE |           |              |            | SURVEY DATE: 1/15/2018 |             | SURFACE USE: CROP LAND |
| SHL FOOTAGE                      | SHL LAT ° | SHL LONG °   | SHL PDOP   | SHL ELEV (FT.)         | SHL 1/4/1/4 | SHL S-T-R              |
| 2152                             | FNL 322   | FEL 39.99463 | -104.73470 | 2.0                    | 5048        | SENE 2-1S-66           |

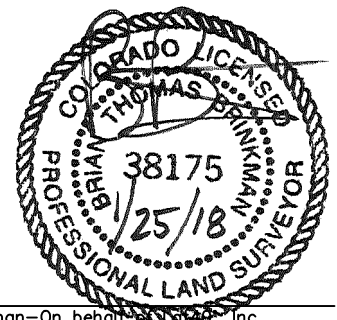
|             |           |              |            |          |           |                    |
|-------------|-----------|--------------|------------|----------|-----------|--------------------|
| BHL FOOTAGE | BHL LAT ° | BHL LONG °   | BHL S-T-R  | EP LAT ° | EP LONG ° | EP S-T-R           |
| 1785        | FNL 460   | FWL 39.99560 | -104.75074 | 2-1S-66  | 39.99564  | -104.73521 2-1S-66 |

## LEGEND

- = ALIQUOT MONUMENT AS DESCRIBED
- = CALCULATED POSITION
- = SURFACE HOLE LOCATION (SHL)
- ▲ = ENTRY POINT LOCATION (EP)
- <sub>BH</sub> = BOTTOM HOLE LOCATION (BHL)
- ⊙ = EXISTING WELL
- ⊙ = ABANDONED WELL

## NOTE:

- 1) Bearings shown are Grid Bearings of the Colorado State Plane Coordinate System, North Zone, North American Datum 1983. The lineal dimensions as contained herein are based upon the "U.S. Survey Foot."
- 2) Distances to section lines measured at 90 degrees from said section lines.
- 3) Ground elevations are based on an observed GPS elevation (NAVD 1988 DATUM).
- 4) Latitude and Longitude shown are (NAD 83 DATUM).
- 5) IMPROVEMENTS: See LOCATION DRAWING for all visible improvements within 500' of oil and gas location.
- 6) This map does not represent a boundary survey.



Brian T. Brinkman—On behalf of Lat40°, Inc.  
Colorado Licensed Professional Land Surveyor No. 38175  
DATE: 1/25/2018  
PROJECT#: 2017015