

Inspection Photos

Loc#412676

Operator: Terra

Inspection Number: 692400102

Inspection Date: 8/31/2018



COLORADO
Oil & Gas Conservation
Commission
Department of Natural Resources



Photo#1:
Overview of Location to West.

August 31, 2018



COLORADO
Oil & Gas Conservation
Commission
Department of Natural Resources

Inspection Photos: TEP Jolley KPLoc#412676



Photo#2:
View of area to North of entry where Weed (kochia) infestation is severe.

August 31, 2018



COLORADO
Oil & Gas Conservation
Commission
Department of Natural Resources

Inspection Photos: TEP Jolley KPLoc#412676



Photo#3:

View to West over North side of Pad & Interim Reclamation area populated with Kochia.
Insert shows close up of conditions & vegetation at ground level.

August 31, 2018



COLORADO
Oil & Gas Conservation
Commission
Department of Natural Resources

Inspection Photos: TEP Jolley KPLoc#412676



Photo#4:

Vegetation to North of Kochia in Photo #3 consists mainly of cheat grass. Insert is of one Knap weed noted.

August 31, 2018

Photo#5:

Perennial Vegetation is established further down on Fill slope.



COLORADO
Oil & Gas Conservation
Commission
Department of Natural Resources

Inspection Photos: TEP Jolley KPLoc#412676



Photo#6:

View East of area South side of site Not reclaimed for Interim Rec.

August 31, 2018



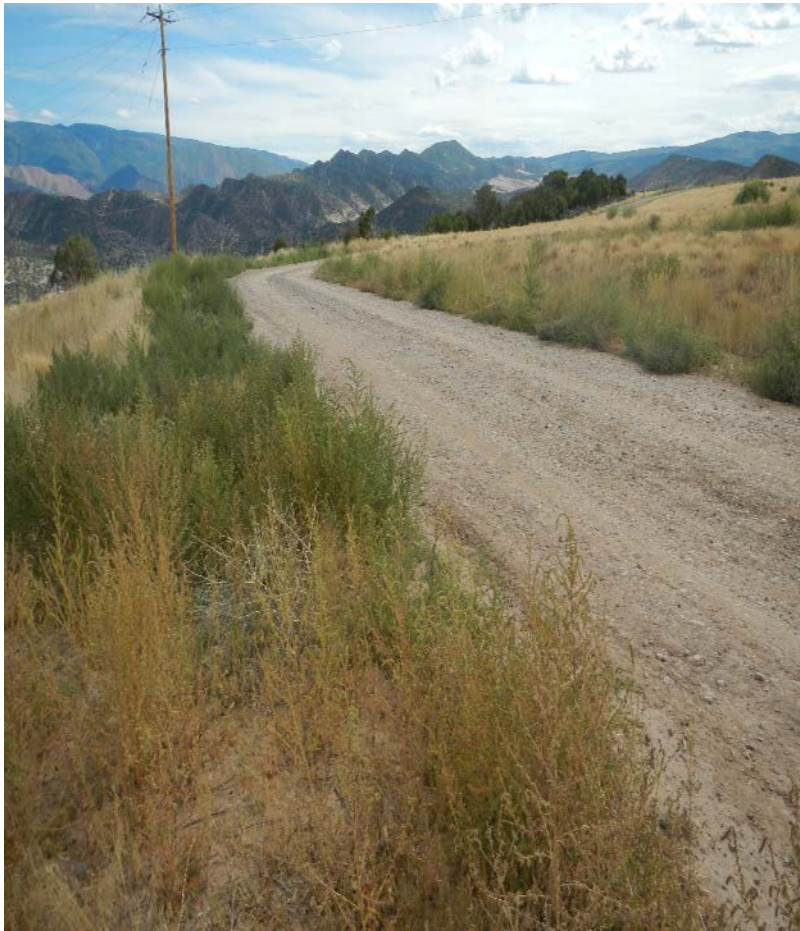
Photo#7:

View West of area South side of site Not reclaimed for Interim Rec. Insert shows close up of ground conditions



COLORADO
Oil & Gas Conservation
Commission
Department of Natural Resources

Inspection Photos: TEP Jolley KPLoc#412676



Photo#8:
Sides of access roads are Kochia Infested.

August 31, 2018



Photo#9:
Sides of access roads are Kochia Infested.



COLORADO
Oil & Gas Conservation
Commission
Department of Natural Resources

Inspection Photos: TEP Jolley KPLoc#412676



Photo#10:

Non-noxious weeds that are considered debris are those that have the potential to break off as annuals and blow around i.e., kochia

August 31, 2018



COLORADO
Oil & Gas Conservation
Commission
Department of Natural Resources

Inspection Photos: TEP Jolley KPLoc#412676