

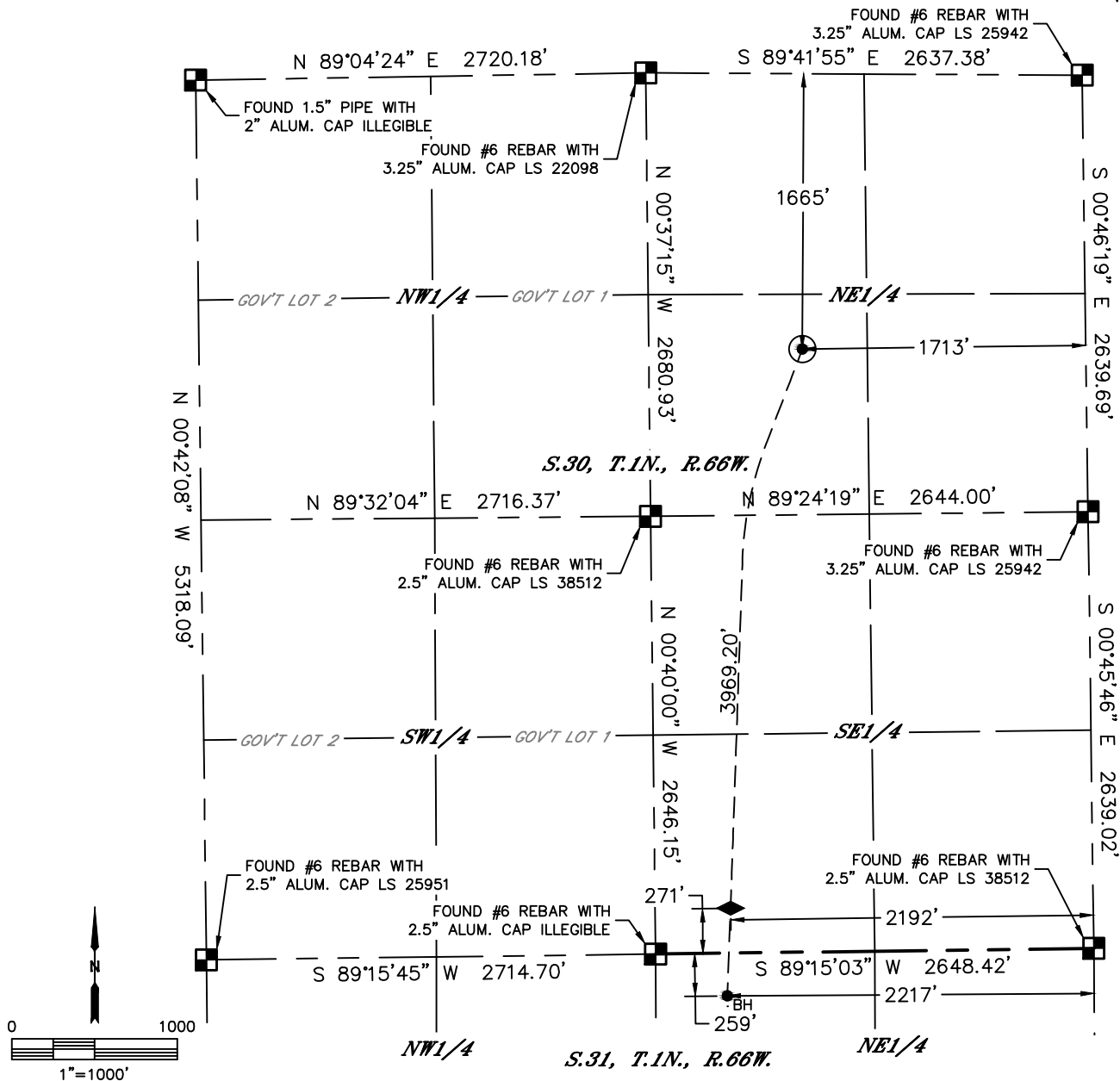


Lat40°, Inc. 6250 W. 10th Street, Unit 2, Greeley, CO 970-515-5294

# WELL LOCATION CERTIFICATE

**SOUTH WELD SWD 4**

SECTION: 30  
TOWNSHIP: 1N  
RANGE: 66W  
6TH. P.M.  
WELD COUNTY, CO



CLIENT: NGL WATER SOLUTIONS DJ, LLC				LANDMAN: PAUL GOTTLÖB		
INSTRUMENT OPERATOR: CASEY KOHOUT				SURVEY DATE: 6/13/2018		SURFACE USE: CROP LAND
SHL FOOTAGE	SHL LAT °	SHL LONG °	SHL PDOP	SHL ELEV (FT.)	SHL 1/4/1/4	SHL S-T-R
1665 FNL 1713 FEL	40.02492	-104.81656	2.3	4952	SWNE	30-1-66

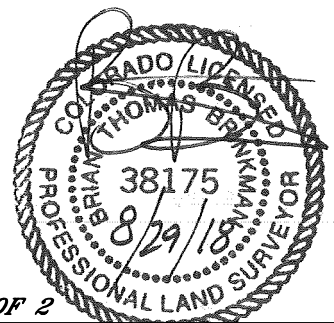
BHL FOOTAGE	BHL LAT °	BHL LONG °	BHL S-T-R	TARGET LAT °	TARGET LONG °
259 FNL 2217 FEL	40.01420	-104.81829	31-1-66	40.01565	-104.81820

## LEGEND

- = ALIQUOT MONUMENT AS DESCRIBED
- = CALCULATED POSITION
- = SURFACE HOLE LOCATION (SHL)
- ▲ = ENTRY POINT LOCATION (EP)
- ◆ = TARGET
- <sub>BH</sub> = BOTTOM HOLE LOCATION (BHL)
- ⊙ = EXISTING WELL
- ⊙ = ABANDONED WELL

## NOTE:

- 1) Bearings shown are Grid Bearings of the Colorado State Plane Coordinate System, North Zone, North American Datum 1983. The lineal dimensions as contained herein are based upon the "U.S. Survey Foot."
- 2) Distances to section lines measured at 90 degrees from said section lines.
- 3) Ground elevations are based on an observed GPS elevation (NAVD 1988 DATUM).
- 4) Latitude and Longitude shown are (NAD 83 DATUM).
- 5) IMPROVEMENTS: See LOCATION DRAWING for all visible improvements within 500' of oil and gas location.
- 6) This map does not represent a boundary survey.



**SHEET 1 OF 2**

Brian T. Brinkman—On behalf of Lat40°, Inc.  
Colorado Licensed Professional Land Surveyor No. 38175  
DATE: 8/29/2018  
PROJECT#: 2018040

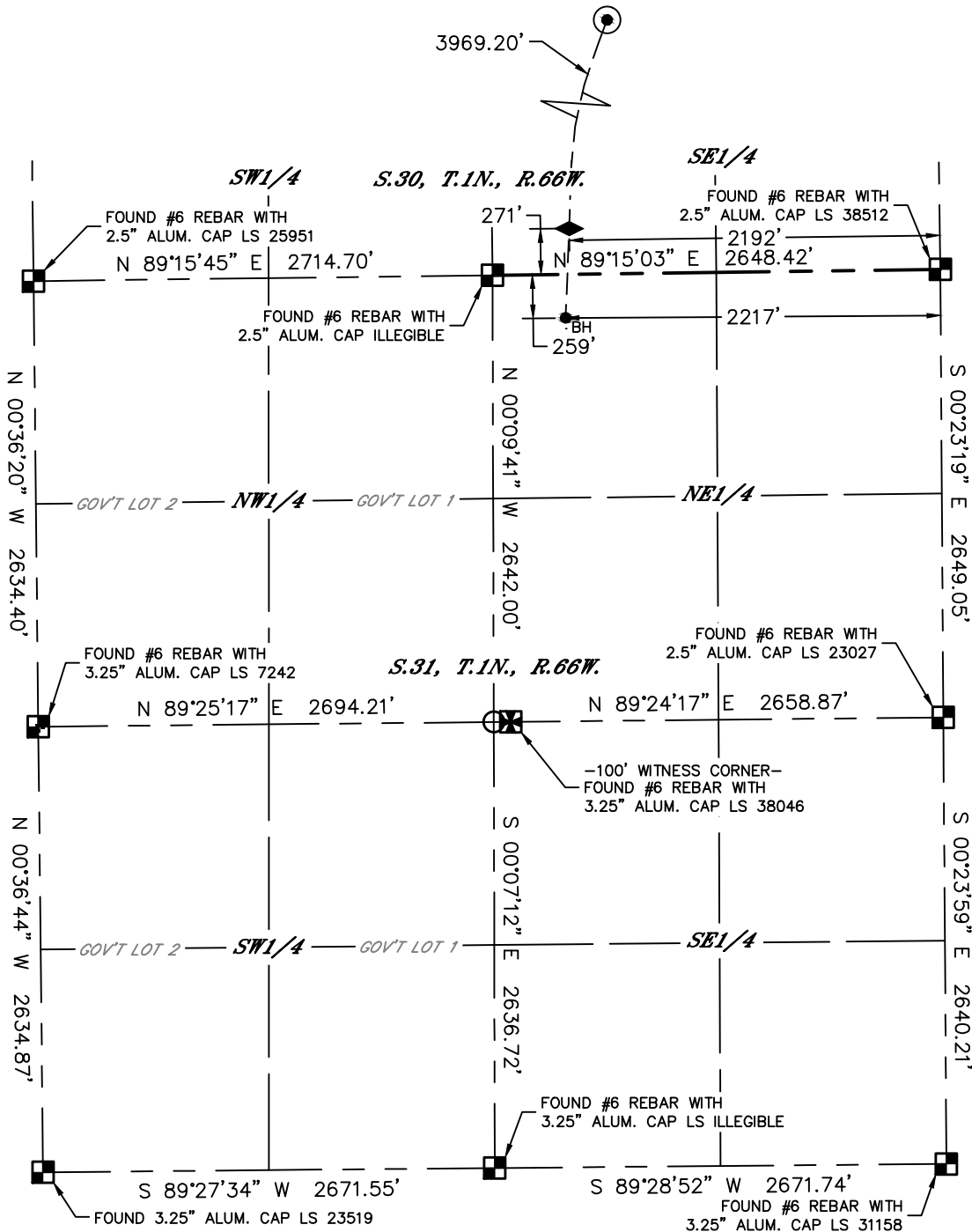


Lat40°, Inc. 6250 W. 10th Street, Unit 2, Greeley, CO 970-515-5294

# WELL LOCATION CERTIFICATE

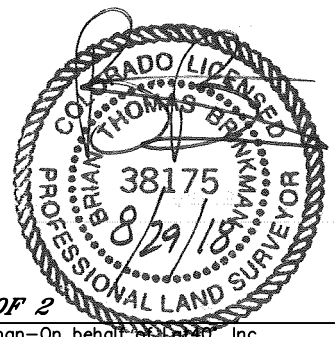
**SOUTH WELD SWD 4**

SECTION: 30  
TOWNSHIP: 1N  
RANGE: 66W  
6TH. P.M.  
WELD COUNTY, CO



## LEGEND

- = ALIQUOT MONUMENT AS DESCRIBED
- = CALCULATED POSITION
- = SURFACE HOLE LOCATION (SHL)
- ▲ = ENTRY POINT LOCATION (EP)
- ◆ = TARGET
- <sub>BH</sub> = BOTTOM HOLE LOCATION (BHL)
- ⊙ = EXISTING WELL
- ⊙ = ABANDONED WELL



**SHEET 2 OF 2**

Brian T. Brinkman—On behalf of Lat40°, Inc.  
Colorado Licensed Professional Land Surveyor No. 38175  
DATE: 8/29/2018  
PROJECT#: 2018040