

T6N, R80W, 6th P.M.

SandRidge Exploration & Production, LLC.

Surface & Landing Point Locations,
SU 0680 3-9H16 as
shown in the NE1/4NW1/4 & NW1/4NW1/4
respectively of Section 9, T6N,
R80W, 6th P.M., Jackson County, Colorado.

BASIS OF BEARINGS:

US STATE PLANE 1983
CO NORTH 0501 GRID

BASIS OF ELEVATION

SPOT ELEVATION AT THE NW CORNER OF SECTION 9,
T6N, R80W, 6TH PM, TAKEN FROM THE COALMONT
QUADRANGLE, USGS 7.5 MIN QUAD (TOPOGRAPHIC MAP)
WITH SAID ELEVATION MARKED AS BEING 8222 FEET.

SURFACE USE
GRAZING/RANGELAND

GRAPHIC SCALE 1"=1000'



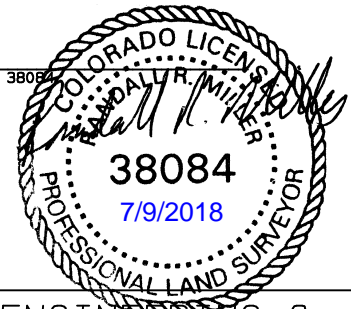
I RANDALL R. MILLER, BEING A REGISTERED LAND SURVEYOR IN THE
STATE OF COLORADO, DO HEREBY CERTIFY THAT THIS PLAT WAS
MADE BY ME AND/OR UNDER MY DIRECT SUPERVISION AND THAT IT
IS ACCURATE TO THE BEST OF MY KNOWLEDGE.

DATED THIS _____ DAY OF _____, 2018.

RANDALL R. MILLER, COLORADO PLS NO. 38084

LEGEND

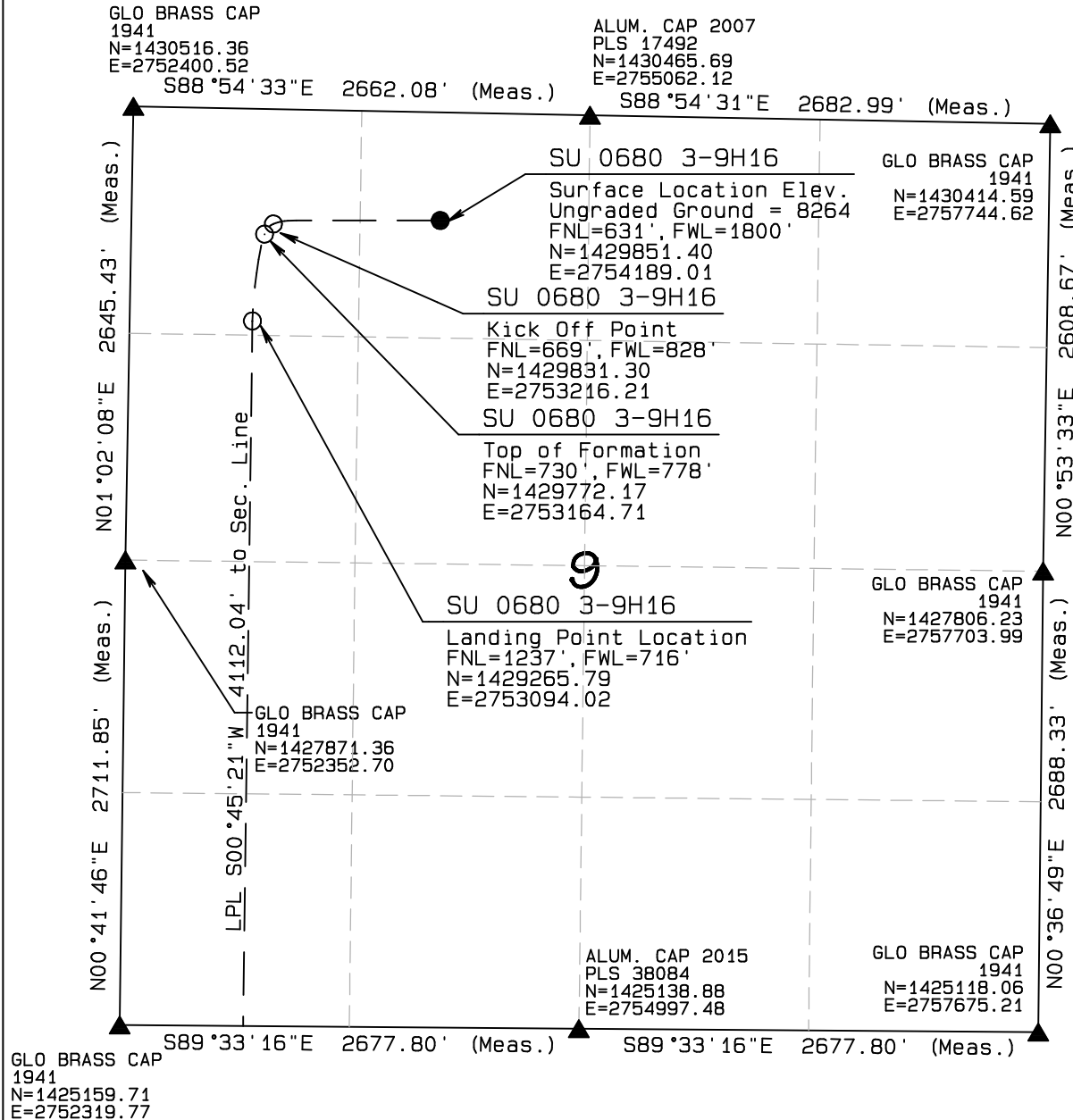
90° SYMBOL
FOUND CORNER
PROPOSED WELL
PROPOSED KOP/LPL/BHL



NORTH PARK ENGINEERING &
CONSULTING, INC.

P.O. BOX 395
WALDEN, CO 80480
(970) 723-3725

DATE OF FIELD WORK: 6/1/2018 DRAWING COMPLETION: 7/6/2018
SURVEYED BY: LRK DRAWN BY: ADL CHECKED BY: RRM



NAD 83 (KOP-KICK OFF PT)	NAD 83 (TOF OF NIOBRARA)	NAD 83 (SURFACE LOCATION)
LATITUDE=40.50990°N LONGITUDE=106.38754°W	LATITUDE=40.50973°N LONGITUDE=106.38772°W	LATITUDE=40.50998°N LONGITUDE=106.38404°W
		PDOP=1.154
	NAD 83 (TARGET BOTTOM HOLE)	NAD 83 (LANDING POINT LOCATION)
	LATITUDE=40.48244°N LONGITUDE=106.38807°W	LATITUDE=40.50834°N LONGITUDE=106.38796°W

T6N, R80W, 6th P.M.

GLO BRASS CAP
1941
N=1425159.71
E=2752319.77

SandRidge Exploration & Production, LLC.

Bottom Hole Location, SU 0680 3-9H16
as shown in the SW1/4SW1/4
of Section 16, T6N, R80W, 6th P.M.,
Jackson County, Colorado.

BASIS OF BEARINGS:

US STATE PLANE 1983
CO NORTH 0501 GRID

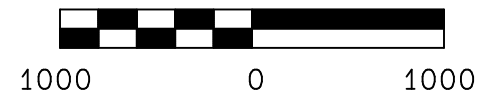
BASIS OF ELEVATION

SPOT ELEVATION AT THE NW CORNER OF SECTION 9,
T6N, R80W, 6TH PM, TAKEN FROM THE COALMONT
QUADRANGLE, USGS 7.5 MIN QUAD (TOPOGRAPHIC MAP)
WITH SAID ELEVATION MARKED AS BEING 8222 FEET.

SURFACE USE

GRAZING/RANGELAND

GRAPHIC SCALE 1"=1000'



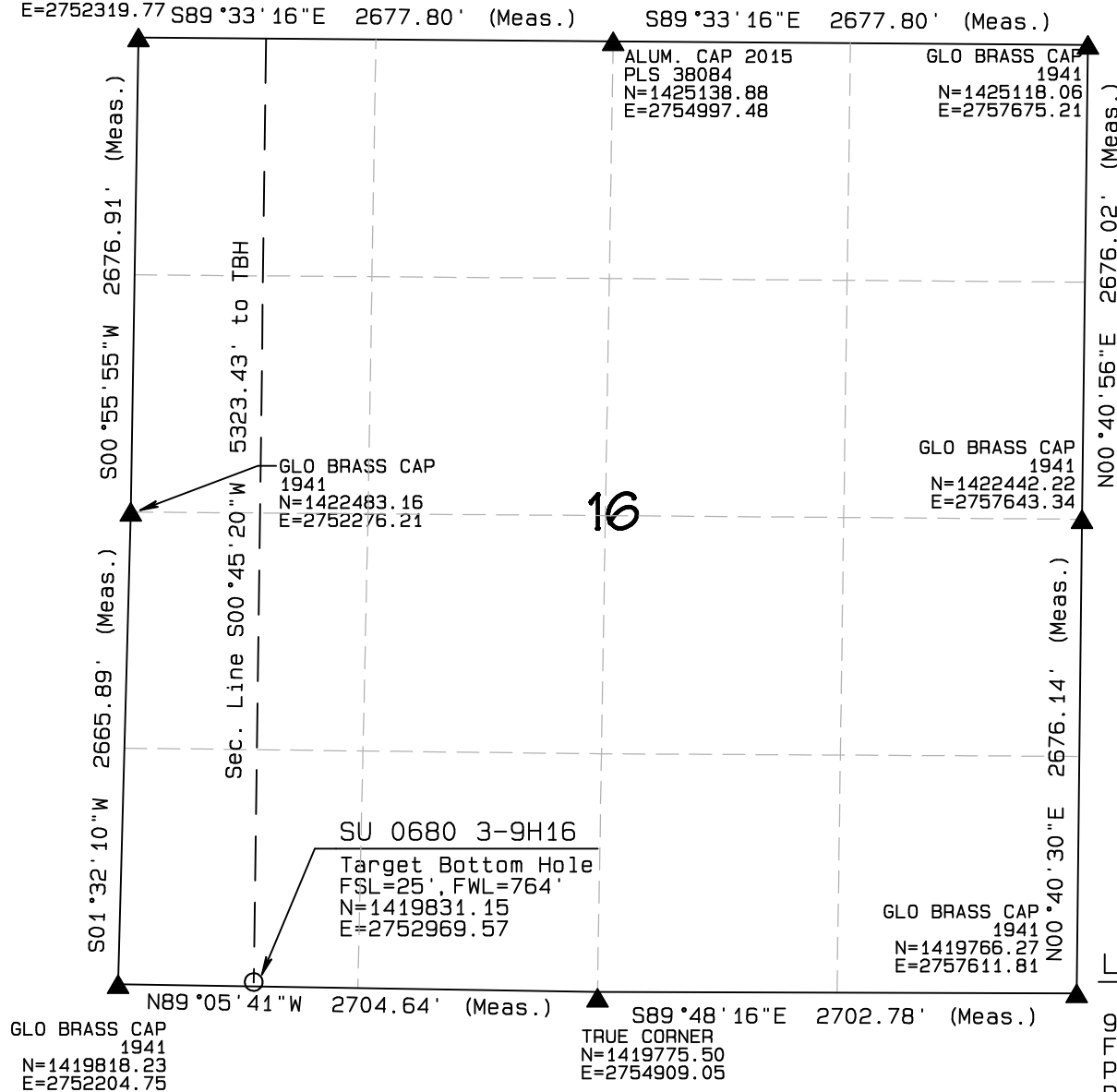
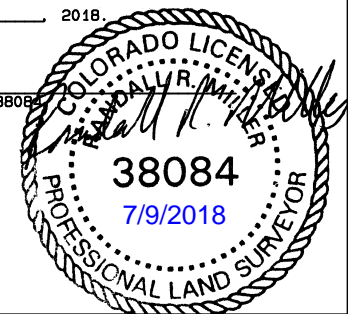
I RANDALL R. MILLER, BEING A REGISTERED LAND SURVEYOR IN THE
STATE OF COLORADO, DO HEREBY CERTIFY THAT THIS PLAT WAS
MADE BY ME AND/OR UNDER MY DIRECT SUPERVISION AND THAT IT
IS ACCURATE TO THE BEST OF MY KNOWLEDGE.

DATED THIS _____ DAY OF _____, 2018.

RANDALL R. MILLER, COLORADO PLS NO. 38084

LEGEND

90° SYMBOL
FOUND CORNER
PROPOSED WELL
PROPOSED KOP/LPL/BHL



NAD 83 (KOP-KICK OFF PT)

LATITUDE=40.50990°N
LONGITUDE=106.38754°W

NAD 83 (TOF OF NIOBRARA)

LATITUDE=40.50973°N
LONGITUDE=106.38772°W

NAD 83 (SURFACE LOCATION)

LATITUDE=40.50998°N
LONGITUDE=106.38404°W PDOP=1.154

NAD 83 (TARGET BOTTOM HOLE)

LATITUDE=40.48244°N
LONGITUDE=106.38807°W

NAD 83 (LANDING POINT LOCATION)

LATITUDE=40.50834°N
LONGITUDE=106.38796°W

NORTH PARK ENGINEERING & CONSULTING, INC.

P.O. BOX 395
WALDEN, CO 80480
(970) 723-3725

DATE OF FIELD WORK: 6/1/2018 DRAWING COMPLETION: 7/6/2018

SURVEYED BY: LRK DRAWN BY: ADL CHECKED BY: RRM