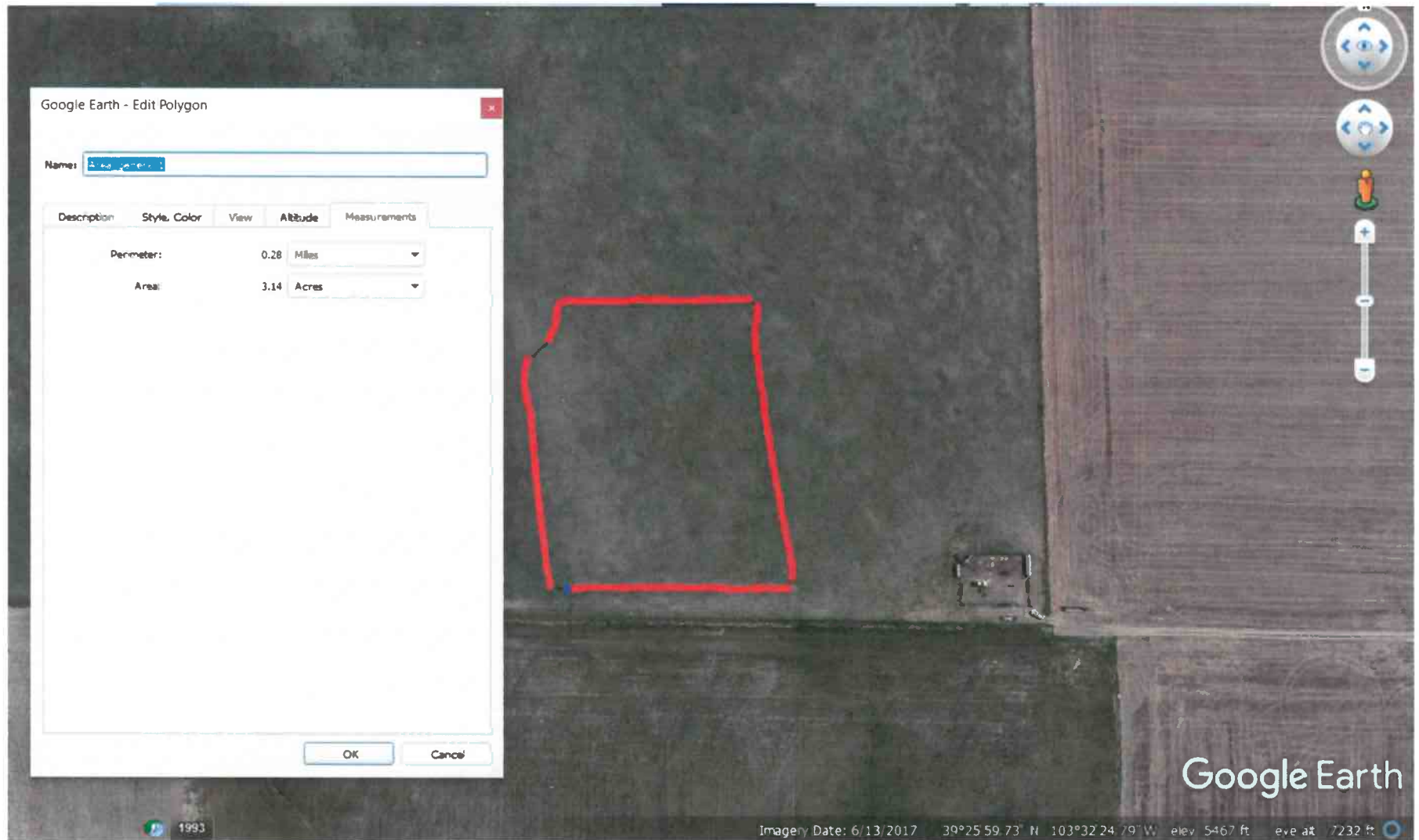


Inspection Photos  
Operator: GRAND MESA OPERATING CO - 35080  
Location ID: 456610



**Photo 12:** 2017 Google Earth aerial imagery. 2A doc. #401665224 states size of disturbance area during construction will be 2.5 acres in size. GPS measurements were conducted indicating that the disturbance area, not including the fence line, is 3.14 acres in size.



**COLORADO**  
Oil & Gas Conservation  
Commission  
Department of Natural Resources

Inspection Doc. Number: 682503767