



Service Order #: 75215C

Date: 05-Apr-18

Well Name	Location	County	St	API#		
JESS 158-13-43		MORGAN	CO			
Formation	Cement Via	Type Of Service	Well Type	Age	AFE#	PO#
	CASING	SURFACE	OIL	NEW		

Customer: NEBCO

Remarks: *Surface Casing Cement*
(408 - 0)
Cement Pumped: 61.5 bbls / 288 sks
Returns @: 53.6 bbls into cement

Customer Rep: GARY NAILL

PH:

WELLBORE DATA				
Type	Size	Weight	Depth	Volume
Surface Casing:	8.625	24.0	408.0	
Production Casing:				
Intermediate:				
Drill Pipe:				
Tubing:				

OTHER DATA		
BHT	Max PSI	Total Depth
	800	408.0

Packer or RetainerType / Depth:

--	--

Perf Depths: # Total

Type	Size	Depth (Top)	Depth (Bot)	Volume
Liner:				
Open Hole:				

TIME	PUMP RATES		DENSITY (lb/gl)	PRESS (psi)	STG TOT (bbls)	TOTAL (bbls)	REMARKS
	WATER (gpm)	PUMP (bpm)					
8:26	0	0.2	6.88	2,324		0.2	PSI TEST LINES
8:28	0	0.0	6.88	0		0.0	PUMP H2O SPACER
8:32	0	2.1	6.90	6		18.9	BEGIN BATCHIN UP CEMENT TO 15.6 PPG
8:39	0	2.1	15.59	0		32.8	END SPACER - PUMP CEMENT
8:54	0	3.8	15.75	80		56.3	CEMENT RETURNS TO SURFACE
8:55	0	0.9	16.03	0		61.5	SHUT DOWN - GET READY TO DROP PLUG
8:57	0	0.0	10.38	0		0.0	DROP PLUG - DISPLACE CEMENT WITH H2O
9:08	0	0.2	6.88	98		25.5	SHUT DOWN (LEAVE 20' CEMENT IN CSG)
9:09	0	0.0	6.88	0		25.5	END JOB

Summary

Max Fl. Rate	Avg Fl. Rate	Max Psi	Avg Psi
3.8	1.5	2,324	48

Customer Acknowledgement:

Service Rating:

- Satisfactory
- Unsatisfactory

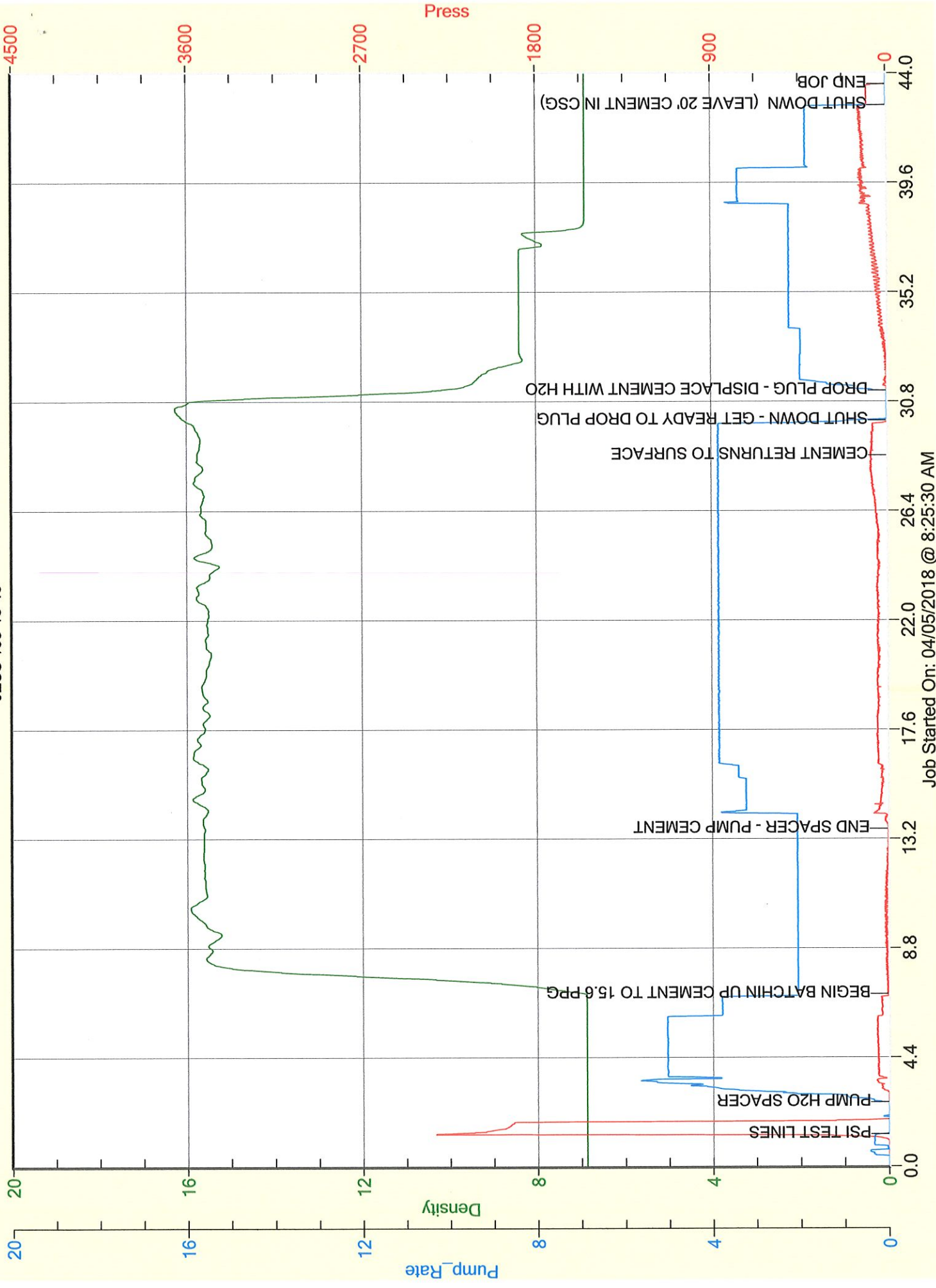
Cementer:

CORY THAUT

PRODUCTS USED

*Class G (+ Additives)
- Density: 15.6 ppg / Yield: 1.20

NEBCO
JESS 158-13-43



Job Started On: 04/05/2018 @ 8:25:30 AM