



Service Order #: 75318C

Date: 10-Apr-18

Well Name	Location	County	St	API#		
JESS 158-13-43		MORGAN	CO			
Formation	Cement Via	Type Of Service	Well Type	Age	AFE#	PO#
	CASING	LONG STRING	OIL	NEW		

Customer: PASS CREEK RESOURCES

Remarks: *TD: 5854*
 Cement Pumped: 26.2 bbls / 100 sks
 Cement Length: 5842 - 5002
 Displaced 143.3 bbls (.75 bbls back)
 Plug Down @ 08:19

Customer Rep: CRAIG JONES PH:

WELLBORE DATA				
Type	Size	Weight	Depth	Volume
Surface Casing:	8.625	24.0	408.0	
Production Casing:	5.500	15.5	5,842.0	
Intermediate:				
Drill Pipe:				
Tubing:				

OTHER DATA		
BHT	Max PSI	Total Depth
165	2,500	5,842.0

Packer or RetainerType / Depth:

--	--

Type	Size	Depth (Top)	Depth (Bot)	Volume
Liner:				
Open Hole:				

Perf Depths:	#	Total

TIME	PUMP RATES		DENSITY (lb/gl)	PRESS (psi)	STG TOT (bbls)	TOTAL (bbls)	REMARKS
	WATER (gpm)	PUMP (bpm)					
7:18	0	0.1	6.88	3,793		0.2	PSI TEST LINES
7:21	0	0.2	6.88	0		0.0	PUMP H2O SPACER
7:24	0	2.1	6.90	192		8.8	BEGIN BATHCING UP CEMENT TO 15.2 PPG
7:29	0	2.1	15.53	197		15.1	END SPACER - PUMP CEMENT
7:38	0	1.8	15.56	0		26.7	SHUT DOWN - END CEMENT
7:39	0	0.0	14.56	0		0.0	WASH UP TO PIT
7:44	391	2.9	6.88	2		12.5	SHUT DOWN - END WASH UP
7:46	0	0.0	6.88	0		0.0	DROP PLUG - DISPLACE CEMENT WITH H2O
8:19	0	0.0	6.88	1,427		143.3	BUMP PLUG - END DISPLACEMENT
8:22	0	0.0	6.88	684		143.3	BLEED OFF PSI TO CHECK FLOAT
8:22	0	0.0	6.88	0		143.3	FLOAT HOLDING
8:23	0	0.0	2.27	0		143.3	END JOB

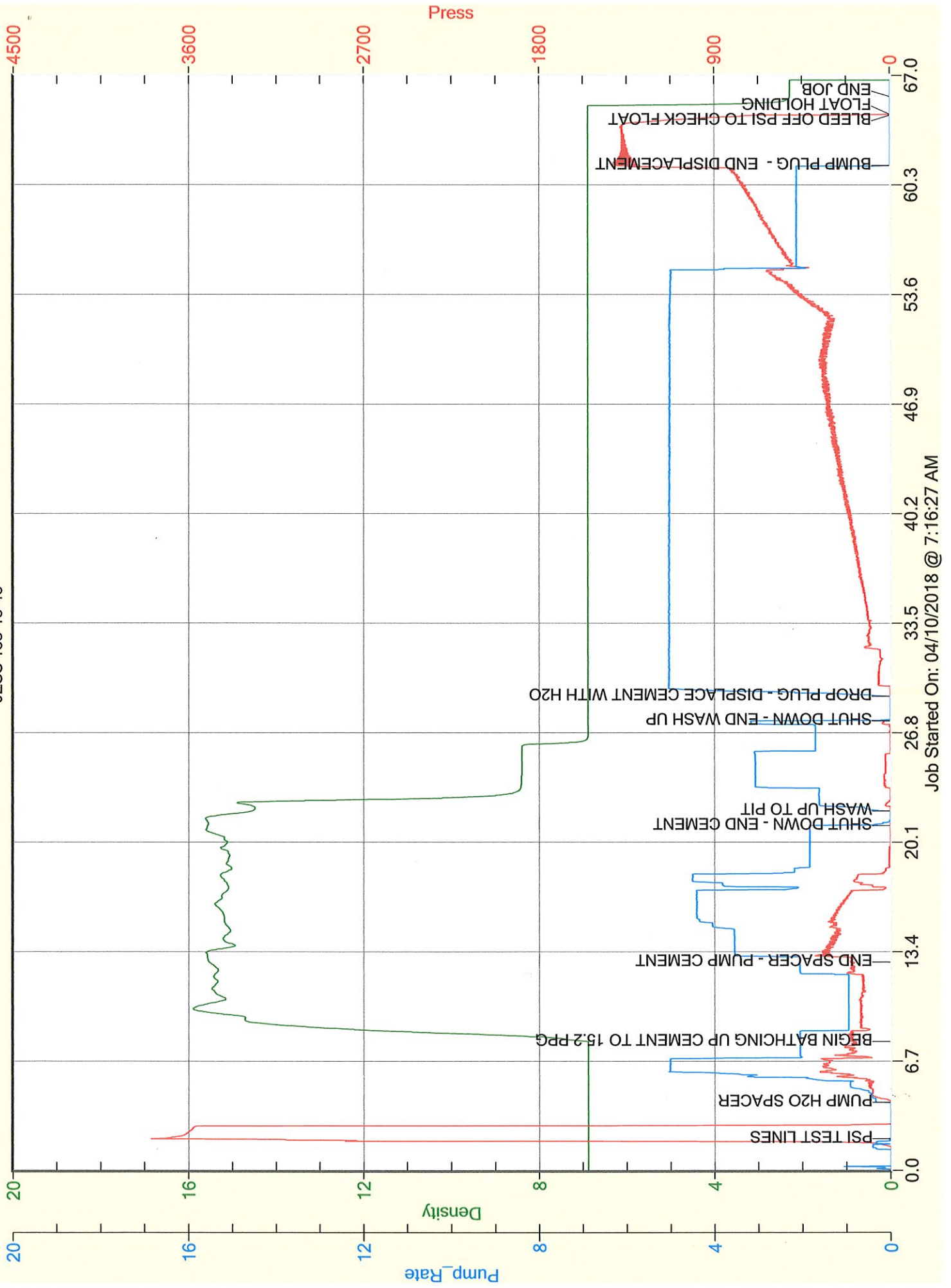
Summary

Max Fl. Rate	Avg Fl. Rate	Max Psi	Avg Psi
2.9	2.6	3,793	240

Customer Acknowledgement:	Service Rating:	Cementer:	PRODUCTS USED
	<input type="checkbox"/> Satisfactory <input type="checkbox"/> Unsatisfactory	CORY THAUT	Cement: Cass G + Additives *Density: 15.2 ppg / Yield: 1.47

PASS CREEK RESOURCES

JESS 158-13-43



Job Started On: 04/10/2018 @ 7:16:27 AM