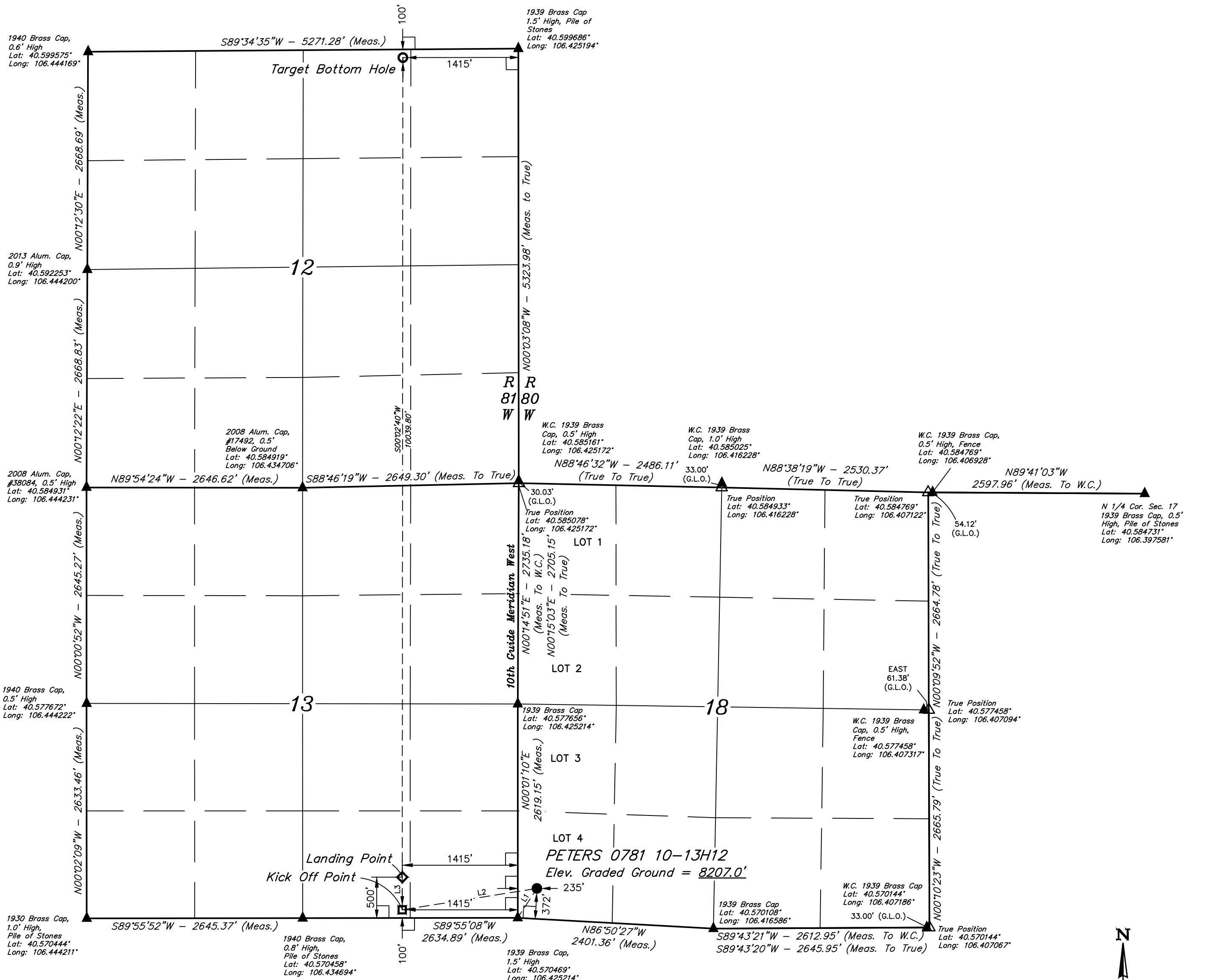


T7N, R80W, 6th P.M.

SandRidge Exploration & Production, LLC

PETERS 0781 10-13H12
LOT 4, SECTION 18, T7N, R80W, 6th P.M.
JACKSON COUNTY, COLORADO

BASIS OF BEARINGS
BASIS OF BEARINGS IS A G.P.S. OBSERVATION
BASIS OF ELEVATION
SPOT ELEVATION AT THE SOUTHEAST CORNER OF SECTION 29,
T7N, R80W, 6th P.M., TAKEN FROM THE COALMONT QUADRANGLE,
COLORADO, JACKSON COUNTY 7.5 MINUTE QUAD.
(TOPOGRAPHIC MAP) PUBLISHED BY THE UNITED STATES
DEPARTMENT OF THE INTERIOR, GEOLOGICAL SURVEY. SAID
ELEVATION IS MARKED AS BEING 8156 FEET



LINE TABLE		
LINE	DIRECTION	LENGTH
L1	N33°09'18"E	429.91'
L2	S80°58'46"W	1670.58'
L3	NORTH	400.00'

LEGEND:

- 90° SYMBOL
- PROPOSED WELLHEAD.
- KICK OFF POINT
- LANDING POINT
- TARGET BOTTOM HOLE.
- SECTION CORNERS LOCATED. (NAD 83)
- SECTION CORNERS RE-ESTABLISHED. (Not Set on Ground.) (NAD 83)

NAD 83 (SURFACE LOCATION)	NAD 83 (KICK OFF POINT)	NAD 83 (LANDING POINT)	NAD 83 (TARGET BOTTOM HOLE)
LATITUDE = 40°34'17.25" (40.571458)	LATITUDE = 40°34'14.66" (40.570738)	LATITUDE = 40°34'18.61" (40.571835)	LATITUDE = 40°35'57.78" (40.599382)
LONGITUDE = 106°25'27.72" (106.424368)	LONGITUDE = 106°25'49.09" (106.430304)	LONGITUDE = 106°25'49.10" (106.430305)	LONGITUDE = 106°25'49.04" (106.430288)
NAD 27 (SURFACE LOCATION)	NAD 27 (KICK OFF POINT)	NAD 27 (LANDING POINT)	NAD 27 (TARGET BOTTOM HOLE)
LATITUDE = 40°34'17.32" (40.571478)	LATITUDE = 40°34'14.73" (40.570758)	LATITUDE = 40°34'18.68" (40.571856)	LATITUDE = 40°35'57.85" (40.599403)
LONGITUDE = 106°25'25.61" (106.423781)	LONGITUDE = 106°25'46.98" (106.429717)	LONGITUDE = 106°25'46.98" (106.429717)	LONGITUDE = 106°25'46.92" (106.429701)
STATE PLANE NAD 83 (CO. NORTH)	STATE PLANE NAD 83 (CO. NORTH)	STATE PLANE NAD 83 (CO. NORTH)	STATE PLANE NAD 83 (CO. NORTH)
N: 1452361.62 E: 2743209.78	N: 1452116.39 E: 2741557.97	N: 1452516.41 E: 2741562.00	N: 1462551.44 E: 2741671.87
STATE PLANE NAD 27 (CO. NORTH)	STATE PLANE NAD 27 (CO. NORTH)	STATE PLANE NAD 27 (CO. NORTH)	STATE PLANE NAD 27 (CO. NORTH)
N: 452359.45 E: 1743366.12	N: 452114.40 E: 1741714.32	N: 452514.22 E: 1741718.35	N: 462549.30 E: 1741828.13

PDOP = 1.2

REV: 1 07-27-18 T.L.L. (LANDING POINT CHANGE)

UINTAH
ENGINEERING & LAND SURVEYING

UELS, LLC
Corporate Office * 85 South 200 East
Vernal, UT 84078 * (435) 789-1017

SURVEYED BY DALLAS NIELSEN 07-24-18 SCALE
DRAWN BY T.L.L. 07-24-18 1" = 1000'

WELL LOCATION PLAT

CERTIFICATE OF REGISTRATION
THIS IS TO CERTIFY THAT THE ABOVE SIGNED AND SEALED MAP OR PLAT IS A TRUE AND CORRECT COPY OF THE ORIGINAL MAP OR PLAT AS PREPARED BY THE SURVEYOR AND THAT THE SAME ARE TRUE AND CORRECT TO THE BEST OF HIS KNOWLEDGE AND BELIEF.
REGISTERED LAND SURVEYOR
RECEIVED JAN 28 2018
STATE OF COLORADO
JUL 28 2018