



Great Western Operating Company, LLC

Location Colorado
Field Wattenburg
Installation Ottesen

Slot N06 - Ottesen LE 09-376HN
Well Ottesen LE 09-376HN
Wellbore Ottesen LE 09-376HN (PWB)

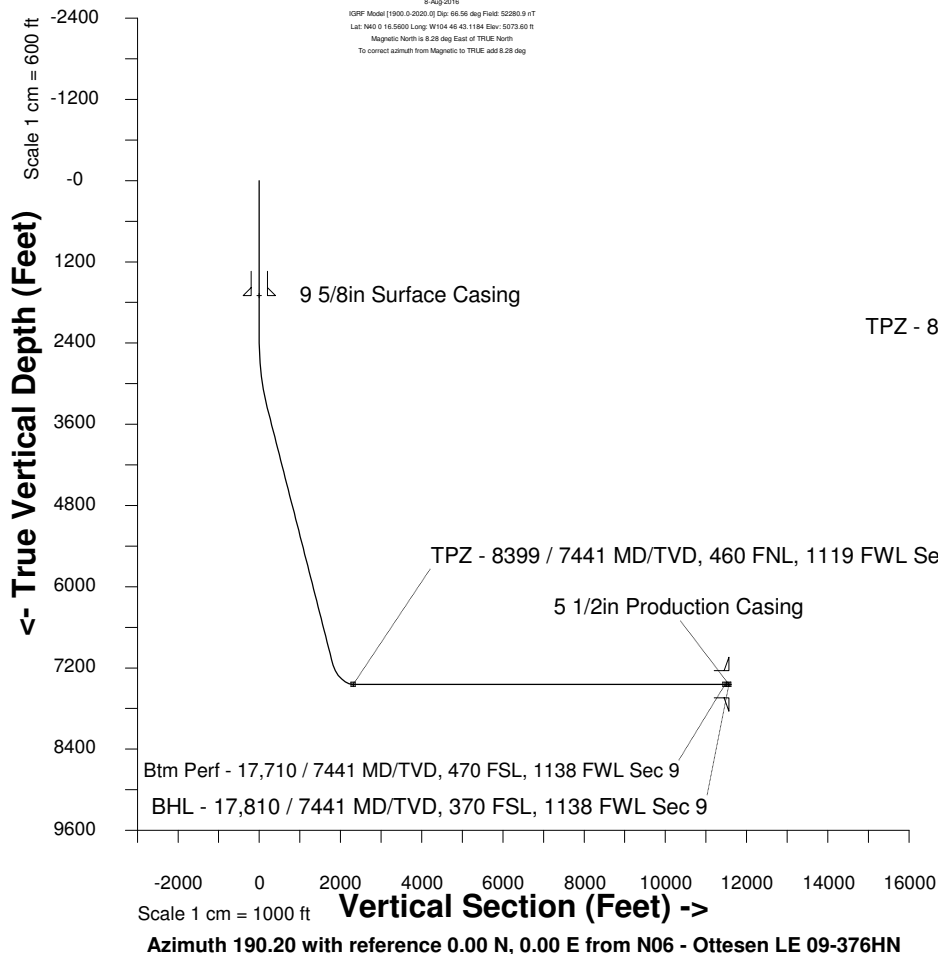
Scale 1 cm = 500 ft

East (Feet) ->

-9000 -8000 -7000 -6000 -5000 -4000 -3000 -2000 -1000 -0 1000 2000 3000

Created by admin
Date plotted 28-Dec-2017
Plot reference is Ottesen LE 09-376HN (PWB).
Ref wellpath is Ottesen LE 09-376HN (PWP#1).
Coordinates are in Feet reference N06 - Ottesen LE 09-376HN.
True Vertical Depths are reference Rig Datum.
Measured Depths are reference Rig Datum.
Rig Datum: Planned Datum #1
Rig Datum to Mean Sea Level: 5093.60 ft.
Plot North is aligned to TRUE North.

9-Aug-2016
IGPP Model [1900.0-2020.0] Dip: 66.56 deg Field: 52280.9 nT
Lat: N40.0 16.5600 Long: W104.46 43.1184 Elev: 5073.60 ft
Magnetic North is 6.28 deg East of TRUE North
To correct azimuth from Magnetic to TRUE, add 6.28 deg



WELL PROFILE DATA

Point	MD	Inc	Azi	TVD	North	East	deg/100ft	V. Sect
Tie on	0.00	0.00	0.00	0.00	S 0.00	W 0.00		-0.00
KOP	2376.00	0.00	232.75	2376.00	S 0.00	W 0.00	0.00	-0.00
End of Build	3376.15	30.00	232.75	3331.06	S 154.91	W 203.74	9.84	188.54
End of Hold	7740.24	30.00	232.75	7110.30	S 1475.80	W 1940.94	0.00	1796.10
Target TPZ - ... Sec 4	8399.27	90.00	179.73	7441.00	S 1973.25	W 2091.17	36.09	2312.29
Target Btm Pe... Sec 9	17709.81	90.00	179.73	7441.00	S 11283.69	W 2047.67	0.00	11467.97
End of Turn	17712.32	90.00	180.01	7441.00	S 11286.20	W 2047.66	36.09	11470.44
T.D. & Target BHL...c 9	17809.99	90.00	180.01	7441.00	S 11383.87	W 2047.68	0.00	11566.57

