

EXISTING RANCH ROAD

PROPOSED ACCESS ROAD (18' x 80')

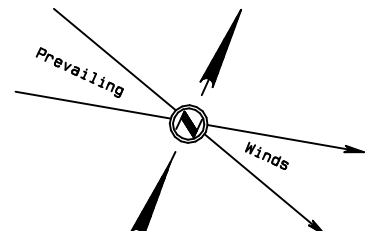
PROPOSED ACCESS ROAD (18' x 130')

OVERHEAD POWERLINE (TYP.)

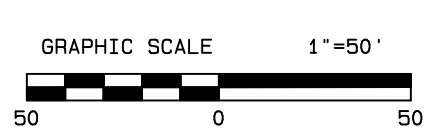
CUT/FILL TRANSITION LINE EL=8259'

FILL SLOPE 3:1 (TYP.)

CUT SLOPE 3:1 (TYP.)



- PROPOSED SHL
- FUTURE SHL



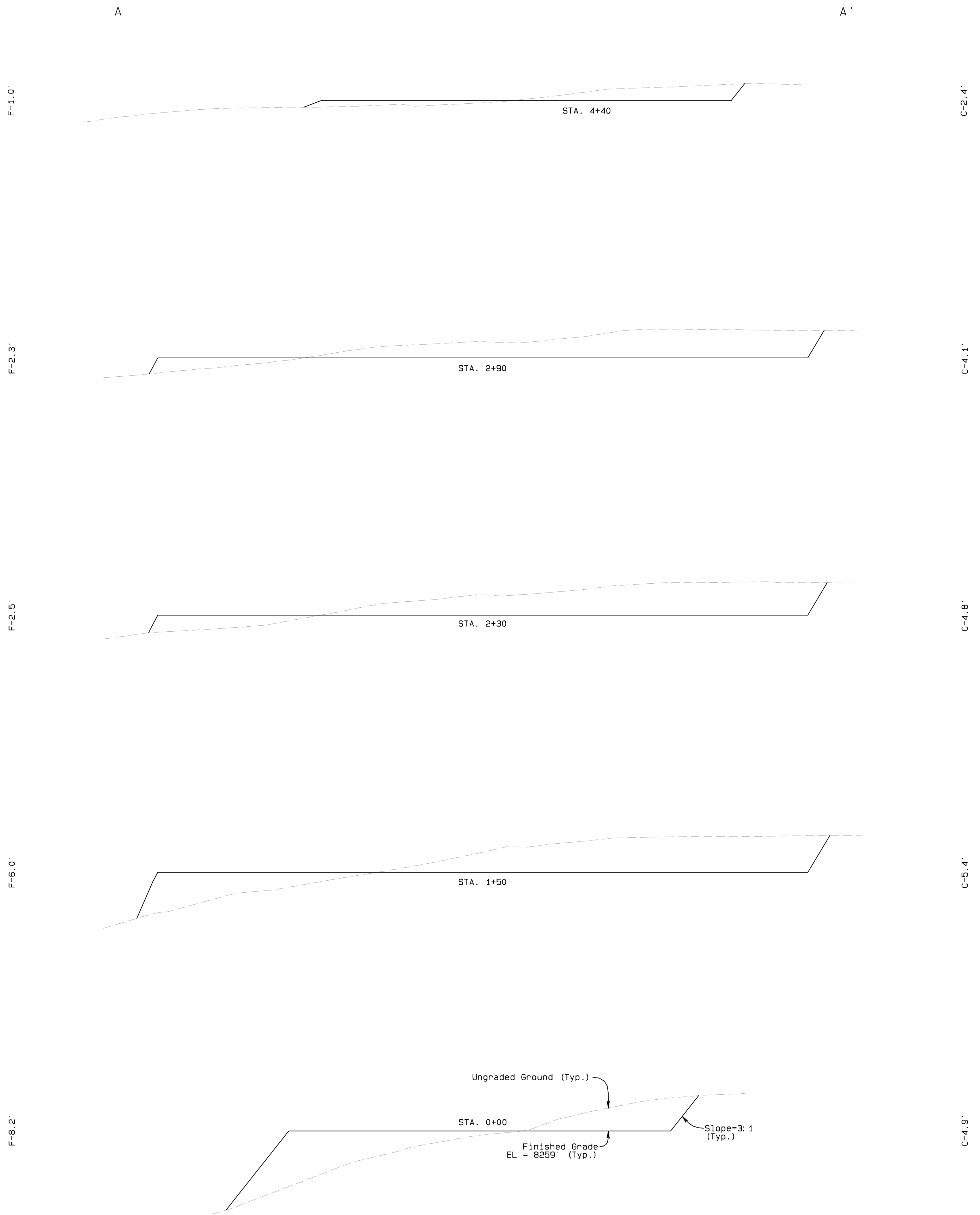
Final Pad Elev.=8259'  
 Elev. for Surface  
 Locations are at  
 Ungraded Ground

Earthwork:  
 Total Excavation - 16,217.4 Cu. Yd.  
 Pad Fill - 7,015.4 Cu. Yd.  
 Berm Stockpile - 9,202.0 Cu. Yd.  
 Total Disturbed Pad Area = 5.00 acres +/-

BASIS OF ELEVATION  
 SPOT ELEVATION AT THE NW CORNER OF SECTION 9, T6N, R80W, 6TH PM, TAKEN FROM THE COALMONT QUADRANGLE, USGS 7.5 MIN QUAD (TOPOGRAPHIC MAP) WITH SAID ELEVATION MARKED AS BEING 8222 FEET.

JACKSON COUNTY ROAD 11

SandRidge Exploration & Production, LLC  
 CONSTRUCTION LAYOUT CROSS SECTION  
 SURPRISE UNIT 0680 S9 PAD  
 NE1/4NW1/4 of  
 SECTION 9, T6N, R80W, 6th PM



Vertical Exaggeration = 5 Times

**BASIS OF ELEVATION**  
 SPOT ELEVATION AT THE NW CORNER OF SECTION 9,  
 T6N, R80W, 6TH PM, TAKEN FROM THE COALMONT  
 QUADRANGLE, USGS 7.5 MIN QUAD (TOPOGRAPHIC MAP)  
 WITH SAID ELEVATION MARKED AS BEING 8222 FEET.



NORTH PARK ENGINEERING & CONSULTING, INC.  
 PO Box 385 Welden, CO 80480 970-723-3725

SandRidge Exploration & Production, LLC

TYPICAL RIG LAYOUT  
SURPRISE UNIT 0680 S9 PAD  
NE1/4NW1/4 of  
SECTION 9, T6N, R80W, 6th PM

