

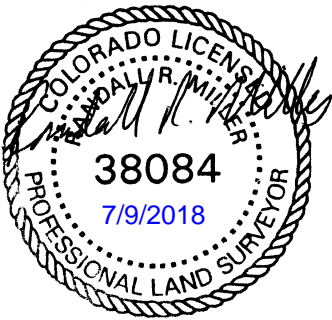
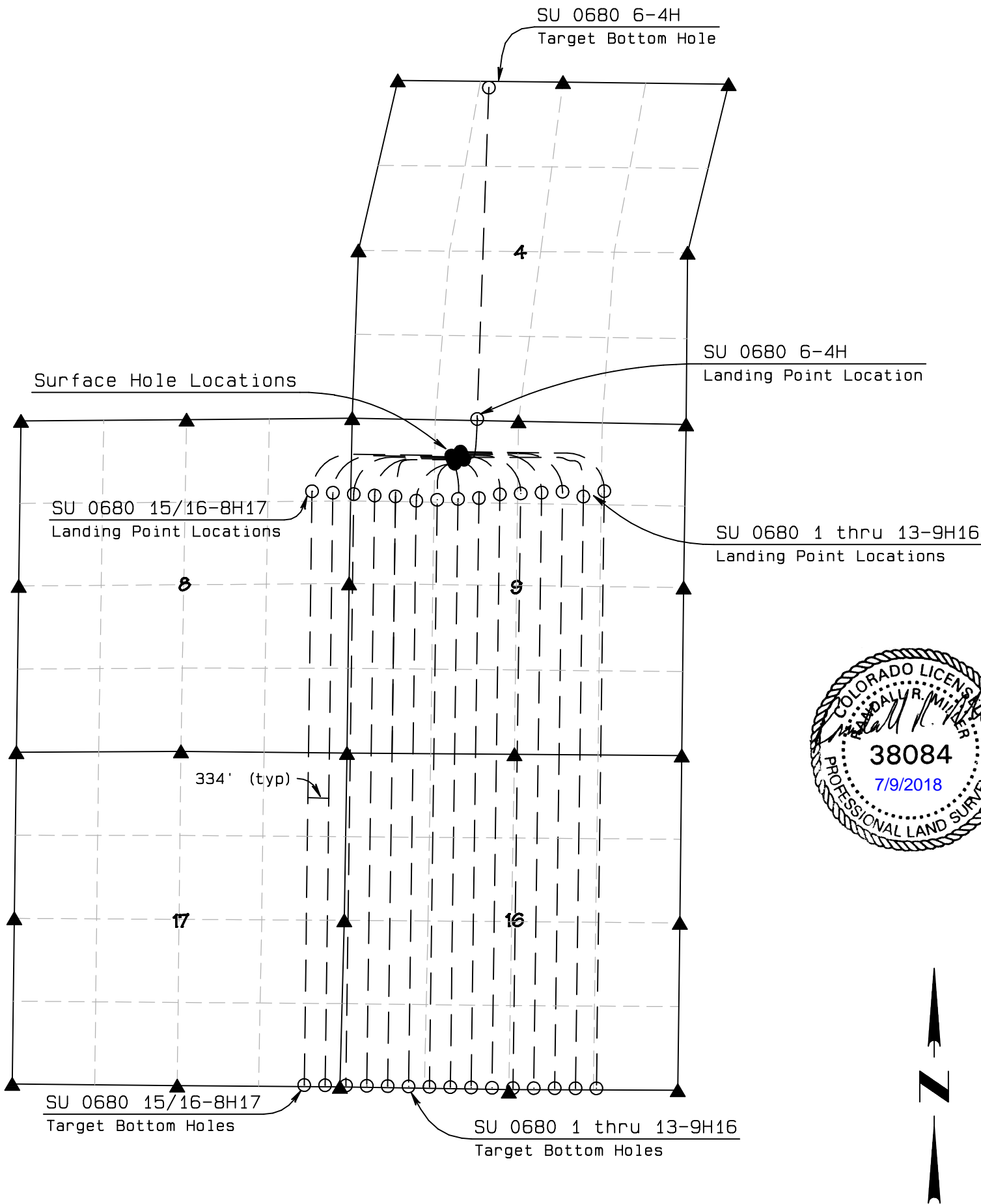
T6N, R80W, 6th P.M.

SandRidge Exploration & Production, LLC

MULTI-WELL PLAN
Surprise Unit 0680 S9 Pad
located as shown in the NE1/4NW1/4 of Section 9,
T6N, R80W, 6th P.M., Jackson County, Colorado.

BASIS OF BEARINGS:
US STATE PLANE 1983
CO NORTH 0501 GRID

BASIS OF ELEVATION
SPOT ELEVATION AT THE NW CORNER OF SECTION 9,
T6N, R80W, 6TH PM, TAKEN FROM THE COALMONT
QUADRANGLE, USGS 7.5 MIN QUAD (TOPOGRAPHIC MAP)
WITH SAID ELEVATION MARKED AS BEING 8222 FEET.



THIS IS TO CERTIFY THAT THE ABOVE PLAT WAS PREPARED FROM
FIELD NOTES OF ACTUAL SURVEYS MADE BY ME OR UNDER MY
SUPERVISION AND THAT THE SAME ARE TRUE AND CORRECT TO THE
BEST OF MY KNOWLEDGE AND BELIEF.

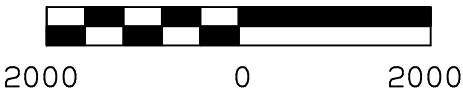
RANDALL R. MILLER
COLORADO PLS NO. 38084

LEGEND

90 ° SYMBOL
FOUND CORNER
PROPOSED WELL
PROPOSED BHL/LPL



GRAPHIC SCALE 1"=2000'



NORTH PARK ENGINEERING &
CONSULTING, INC.

P.O. BOX 395
WALDEN, CO 80480
(970) 723-3725

DATE OF FIELD WORK: 6/1/2018 DRAWING COMPLETION: 7/6/2018
SURVEYED BY: LRK DRAWN BY: ADL CHECKED BY: RRM