



Ursa Operating Company LLC

Site-Specific Emergency Response Plan

All Operations: BMC A PAD

IN CASE OF EMERGENCY,

CALL 911

FOR FIRE DEPT., AMBULANCE, POLICE

URSA 24/7 EMERGENCY NOTIFICATION: 1-855-625-9922

Report All Emergencies/Spills to Respective Leads Per the Operations

BMC A PAD COORDINATES

Longitude: 39.433504

Latitude: -108.049751

ELEVATION: 5,111

SECTION 13, T7S, R96W

MATT HONEYCUTT	OPERATIONS VP	970.812.2198
PAKE YOUNGER	COMPLETIONS/PRODUCTION VP	970.260.2423
DARCY HURST	PRODUCTION SUPER	970.618.3592
HANS WYCHGRAM	DRILLING VP	303.884.9079
DWAYNE KNUDSON	ENVIRONMENTAL MANAGER	970.456.3335
TARA MALL	H&S MANAGER	970.618.2155
OSCAR MOLINAR	COMPLETIONS CONSULTANT	970.589.1999
LUKE GREIGER	COMPLETIONS CONSULTANT	970.985.2332
SHANE WING	WATER MOVEMENT	970.640.2494
DAVE HAYES	CONSTRUCTION/OPERATIONS	970.250.2590
MIKE GARRETT	PIPELINE	801.556.6981
RICHARD McNEIL	DRILLING COMPANY MAN	970.623.0614
NATE GILL	DRILLING COMPANY MAN	970.819.3989
RIG DIRECT NUMBER	24 HOURS	713.423.6825
EMERGENCY CONTACT	24 HOURS	1.855.625.9922
STAKEHOLDER	24 HOURS	970.620.2787

QUICK REFERENCE NUMBERS TO POST

PRIMARY MUSTER AREA AT ENTRANCE OF LOCATION**Horn Alarm Signals****1 Long Blast – Well Control Emergency****Repeated Short Blasts – Fire****Repeated Long Blasts – Evacuate to Muster Area**

General Emergency Instructions: All emergency situations are unique and present various conditions. Always evaluate the situation before deciding on a course of action. Ursa representative MUST assure that all personnel on location understand the following:

ALL EMERGENCIES: DO NOT “RUSH IN” UNTIL YOU HAVE CONSIDERED THE FOLLOWING:

- Is there an immediate threat to life from fire, explosion, structure collapse, chemical spill or release? If so, sound the alarm and evacuate
- Is there an immediate potential for release of toxic (poisonous) chemicals or fumes into the air? If so, evacuate uphill and upwind of the release
- Is there an immediate potential for uncontrollable energy release (pressure), electrical shock, chemical spill, fuel to “feed” a fire? If so, de-energize equipment, disconnect power, shut-off valves and fuel sources, but only if safe to do so and if action will not cause a more serious problem
- When in doubt, sound the alarm, evacuate, and call for help

FIRE:

- Sound the alarm (repeated short blasts on the horn) and call for help
- Do not fight a fire until you have alerted someone else
- Isolate, shut-off fuel sources
- Discharge fire extinguishers using the Pull, Aim, Squeeze, Sweep method
- Only fight fires in the incipient (beginning) stage. Rule of thumb: If you have already discharged one 20 – 30-pound fire extinguisher at the base of a fire and have made no impact on the fire, then fire is beyond the incipient stage. Evacuate, shut off fuel sources.

- **Never fight a fire without planning your escape route first**
- **Never turn your back on a fire while attempting to extinguish – fires can “reignite” even if they appear to be extinguished**

WELL CONTROL / BLOWOUT EMERGENCY:

- **Sound the alarm (1 long blast on the horn)**
- **Follow well control / blowout procedures as practiced in weekly drills**
- **Assure that the Ursa Representative is notified**

General Emergency Instructions: All emergency situations are unique and present various conditions. Always evaluate the situation before deciding on a course of action. Ursa representative **MUST** assure that all personnel on location understand the following:

MEDICAL EMERGENCY:

- **Make sure it is safe for you to be in the area**
- **Notify supervisor**
- **Assure the airway is open; the patient is breathing and has a pulse. If not Call 911 and start CPR**
- **Control bleeding, treat for shock**
- **Never move an injured person unless there is an immediate threat to his/her life**

CHEMICAL SPILL EMERGENCY:

- **Shut off the source of the spill if possible**
- **Notify supervisor**
- **Do not walk or drive through spill areas. If vapors are released, move to a safe distance uphill and upwind of the release and vapor clouds**
- **Attempt to identify spilled material**
- **Follow guidelines in North American Emergency Response Guidebook – 2008 Version**
- **Attempt to contain spills only if determined to be safe to do so by supervisor**
- **Call for help if needed**

SEVERE WEATHER:

- Monitor news and weather reports
- Notify supervisor of threatening conditions
- The, trailers, and vehicles. Get low to the ground, away from trees, preferably in a ditch or depression if no likelihood of flash-flooding
- Seek shelter indoors or under cover during severe lightning
- Never attempt to walk or drive across flooded roads or ditches

*****IF IN DOUBT ABOUT ANY EMERGENCY, EVACUATE AND CALL 911*****

Report All Emergencies to Ursa on-site Representative OR

URSA 24/ 7 EMERGENCY NOTIFICATIONS

1-855-625-9922

NAME	PHONE
FEDERAL AND STATE GOVERNMENT	
Bureau of Land Management	(970) 878-3800
National Response Center	(800) 424-9300
Colorado Oil & Gas Conservation Commission (COGCC)	(888) 235-1101
CHEMTREC	(800) 424-9300
SEPC (State Emergency Planning Committee)	(970) 846-3912
Colorado Division of Wildlife (DOW)	(970) 255-6100
US Forest Service (USFS) District Ranger in Rifle	(970) 625-2371
Colorado Department of Public Health & Environment	(877) 518-5608
Poison Control Hotline	(800) 222-1222
LOCAL GOVERNMENT and OTHER AGENCIES	
GARCO Sheriff's Department Non-Emergency	(970) 945-0453
GARCO Emergency	911
GARCO Environmental Health Department	(970) 625.5200
GARCO Road and Bridge Department	(970) 625-8601
GARCO Emergency Management	(970) 945-0453
Grand River Hospital District (Rifle, CO)	(970) 625-1510
St. Mary's Hospital (Grand Junction, CO)	(970) 298-2273
St. Mary's CareFlight Helicopter	(970) 332-4923
URSA OPERATING COMPANY LLC	
Ursa Operating LLC Emergency Number	(855) 625-9922
Ursa Operating Company LLC, Rifle CO	(970) 625-9922

General Directory of Ursa Contacts and Vendors Ursa Operating Company, LLC: 24 Hour Emergency Contact Number	
	1.855.625.9922
Ursa Operating Company, LLC 792 Buckhorn Drive Rifle, CO 81650	970.625.9922
Ursa Operating Company, LLC 1600 Broadway #2600 Denver, CO 80202	720.508.8350
Matt Honeycutt- VP Operations	Direct Number (970) 625.9922 Cell Number (970) 812.2198
Darcy Hurst Production Superintendent	Direct Number (970) 625.9922 Cell Number (970) 618.3592
Andrew Terrazas Production Lead	Direct Number (970) 625.9922 Cell Number (970) 456.6060
Pake Younger- Completions/Production Manager	Direct Number (970) 625.9922 Cell Number (970) 260.2423
Tara Mall- Safety Manager	Direct Number (970) 625.9922 Cell Number (970) 618.2155
John Doose- Surface Landman	Direct Number (970) 625.9922 Cell Number (970) 309.9359
Dwayne Knudson- Environmental Manager	Direct Number (970) 625.9922 Cell Number (970) 456.3335
Dave Hayes – Operations Coordinator	Cell Number (970) 250.2590
Ursa Operating Company Denver Contacts	Contact Numbers
Hans Wychgram- VP Drilling	Direct Number (720) 508.8350 Cell Number (303) 884.9079
Chris McRickard- Regulatory Manager	Direct Number (720) 508.8362 Cell Number (303) 877.7581
Jake Pearse- Tech System Analyst	Cell Number (618) 553.6363
Federal and State Agencies	Contact Numbers
National Poison Control Center Hotline	Direct Number (800) 222.1222
National Response Center	Direct Number (800) 424.8802
COGCC Oil Spill Response	Direct Number (303) 894.2100
COGCC NW Contact- Shawn Kellerby	Direct Number (970) 285.7235 Cell Number (970) 712.1248
COGCC	Direct Number (888) 235.1101
COGCC- Alex Fischer	Direct Number (303) 894.2100 Ext. 5138

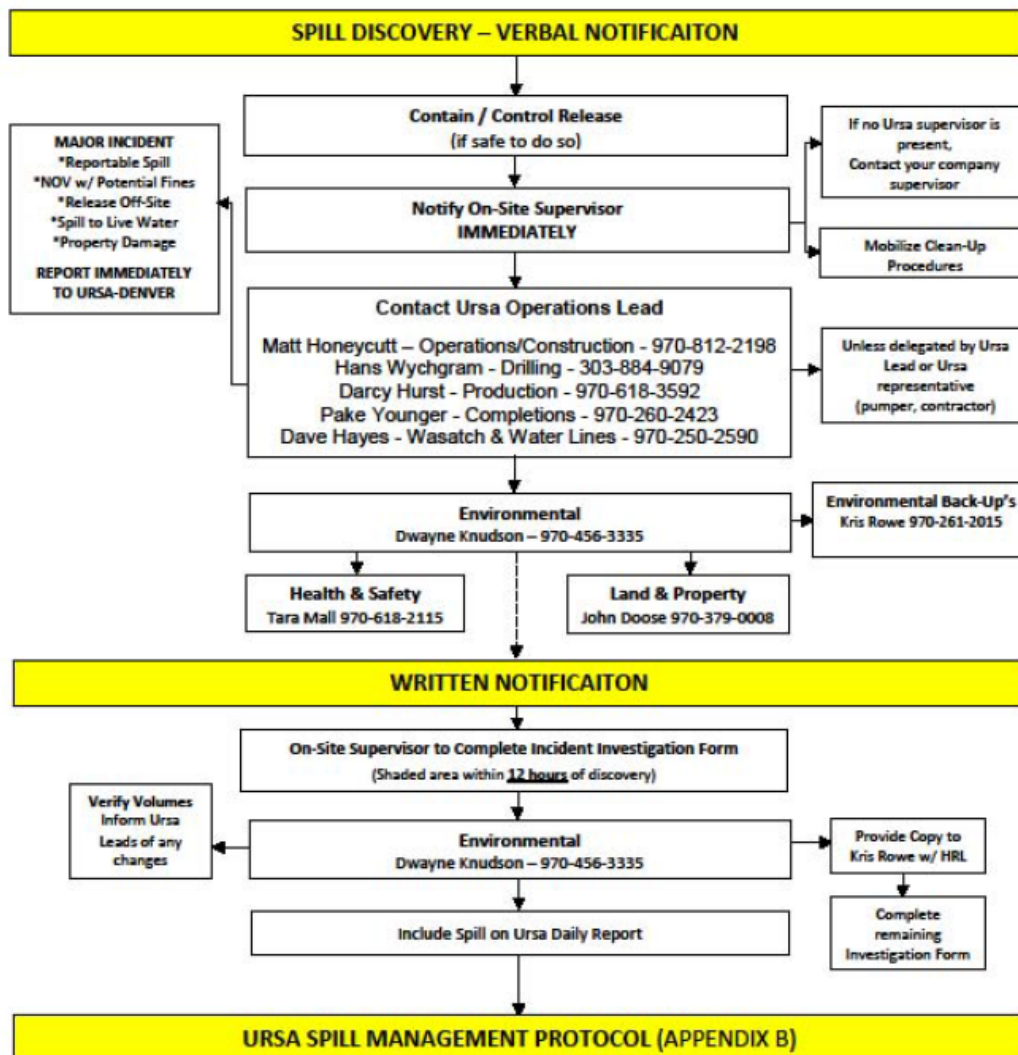
EPA Region 8 Colorado	Direct Number (800) 227.8917
Colorado Department of Public Health and Environment (CDPHE)	Direct Number (877) 518.5608
Garfield County Emergency Communications Center	Direct Number (970) 625.8095 911
Local Emergency Planning Committee	Direct Number (970) 945. 0453
Garfield County Oil and Gas Liaison- Kirby Wynn	Direct Number (970) 625.5905 Cell Number (970) 987.2557
Garfield County Airport	Direct Number (970) 625.1091
Garfield County Road and Bridge	Direct Number (970) 625.8601
Bureau of Land Management- Christine McConnell	Regional Office (970) 257.4800 Direct Number (970) 876.9011 Cell Number (970) 404.5880
Colorado Division of Wildlife (DOW)	Direct Number (970) 255.6100
Fish and Wildlife Region 6 Colorado	Direct Number (303) 236.7920
Energy Liaison Colorado Division of Wildlife	Direct Number (303) 236.7920
US OSHA	Direct Number (800) 321.6742
Ursa Contractors	Contact Numbers
Waste Removal/ Porta Can- Western Colorado Waste	Cell Number (970) 210.2330
HCSI	Direct Number (970) 243.3271
Kris Rowe	Direct Number (970) 243.3271 Cell Number (970) 261.2015
Maurice Foye	Direct Number (970) 243.3271 Cell Number (970) 260.3650
Water Hauling and Hydrovacs	Contact Numbers
A & W Transport and Hydrovac- Art Gurule	Cell Number (970) 355.4034 Direct Number (970)625.8270
H&K Water – Hank Kracht	Cell Number (970) 970.309.9700
HuffCo- Amy Huffman	Cell Number (970) 260.5880
Elder Trucking Jared Elder	Direct Number (970) 625.4189 Cell Phone (970) 618.5612
Water Management	Contact Numbers
MCS- Bob Swim	Direct Number (970) 216.3815
MCS-Shane Wing	Cell Number (970) 640.2494
Drilling: Camps/Cement/Directional/Trucking/Mud	Contact Numbers
Cyclone Drilling Office-Gillette Wyoming	Cell Number (307) 682.4161
Onsite Toolpusher Kyle Schuerger (Rotating Hitch 2 weeks)	Cell Number (775) 400.6503
Onsite Toolpusher Blaine Lawson (Rotating Hitch 2 weeks)	Cell Number (970) 402.9090

Stallion Camps Area Supervisor- Bart Steele	Cell Number (970) 274.6549
Payzone Directional-Brent Fagnant	Cell Number (435) 401.0656
Howcroft Trucking- Derrick Howcroft	Cell Number (435) 828.4694
Halliburton- Mark Mayo	Cell Number (970) 216.3770
BGS Mudlogging- Tarin Boxberger	Cell Number (970) 623.6626
NOV Solids Controls- Derrick Kesy	Cell Number (307) 345.4767
Canary Well Heads- Brick Rippe	Cell Number (970) 571.4363
Completions Frac/ Cement	Contact Numbers
Haliburton- Mark Mayo	Cell Number (970) 216.3770
MCS- Bob Swim	Cell Number (970) 216.3815
MCS- Shane Wing	Cell Number (970) 640.2494
Reliant Wireline- Lincoln Folker	Cell Number (303) 549.4120
LEC Services- Shawn Grant	Cell Number (970) 618.1148
SPN Workover - Mark Vandehi	Cell Number (970) 257.6169
EXC Snubbing Services- Tom Daniels	Cell Number (307) 389.1836
Premier Thru Tubing- Derek Winkler	Cell Number (435) 621.3032
Fat Dog Foam- Ted Dexter	Cell Number (970) 773.4339
Production	Contract Numbers
Multichem- Andrew Niblett	Cell Number (570) 250.3945
JPPS- Jason Hauck	Cell Number (970) 618.4468
Scott Vance Trucking	Cell Number (970) 260.0709
Misc Vendors	Contact Numbers
Kathy Hangs Pilot Cars and Traffic Management	Cell Number (970) 571.1248
Pete Martin Rat Holing- Fernando Rubio	Cell Number (435) 790.8605
Badger Hydrovac	Office Number (970) 625.5552
Western Colorado Waste- Hank	Cell Number (970) 210.2330



Colorado Operations

SPILL NOTIFICATION & MANAGEMENT PROTOCOL (SPILLS, ENVIRONMENTAL INCIDENTS/THREATS)





ENVIRONMENTAL SPILL/RELEASE INVESTIGATION

Pad/Location:	_____
Report Date:	_____

Responsible Party

<input type="checkbox"/>	URSA OP's PHASE	_____
<input type="checkbox"/>	CONTRACTOR:	_____

*Attach Billing Info

Initial Reporting (personnel that discovered release)

Occurred:	_____	Time:	_____	Discovered By:	_____	Company:	_____	Ph:	_____
Est. Volume:	_____	Material Released	_____	Within 317B Area?	<input type="checkbox"/> NO <input type="checkbox"/> YES				
Spill Contained on Location	<input type="checkbox"/> NO <input type="checkbox"/> YES	Live Water Impacted?	<input type="checkbox"/> NO <input type="checkbox"/> YES	Within Secondary Containment?	<input type="checkbox"/> NO <input type="checkbox"/> YES				
SIGNIFICANT THREAT TO HUMANS OR ENVIRONMENT <input type="checkbox"/> NO <input type="checkbox"/> YES - Implement Emergency Response Plan									

Follow Up (for Ursa Official Use)

INCIDENT LOCATION	RELEASE TYPE	LANDS AFFECTED	MEDIA AFFECTED	317B AREA
<input type="checkbox"/> Well Pad	<input type="checkbox"/> E&P Waste	<input type="checkbox"/> Private	<input type="checkbox"/> Land/Soil	<input type="checkbox"/> Buffer Zone
<input type="checkbox"/> Facility	<input type="checkbox"/> Non- E&P	<input type="checkbox"/> Federal	<input type="checkbox"/> Waters (U.S)	<input type="checkbox"/> Water Impacted
<input type="checkbox"/> Transportation (DOT)		<input type="checkbox"/> Split Estate	<input type="checkbox"/> Wetland/Riparian	<input type="checkbox"/> N/A
<input type="checkbox"/> Other:	<input type="checkbox"/> Other:	<input type="checkbox"/> On- Lease <input type="checkbox"/> Off- Lease	<input type="checkbox"/> Ground Water	

INCIDENT DESCRIPTION (How incident occurred, type of effluent, emissions, chemical, etc.):

VOLUME RECOVERED:

ROOT CAUSE:

PLANS TO IMPLEMENT ADDITIONAL TRAINING (DESCRIBE):

DATE TRAINING COMPLETE:

Waste Management (Requires Ursa Approval)

FINAL DISPOSITION OF WASTE (STORAGE, TREATMENT, DISPOSAL):	Ursa Approval: <input type="checkbox"/> NO <input type="checkbox"/> YES	DATE: _____
DISPOSAL LOCATION: _____		
Manifesting Required: <input type="checkbox"/> NO <input type="checkbox"/> YES		

NOTIFICATION/REPORTING ACTIONS (to be completed by Ursa Spill Program Support - K.Rowe HRL)

Agency/Owner	Verbal Notification Required				Written Reporting Required			
Landowner	<input type="checkbox"/> Yes	<input type="checkbox"/> No	Date: _____	<input type="checkbox"/> Yes	<input type="checkbox"/> No	Date: _____	<input type="checkbox"/> Yes	<input type="checkbox"/> No
COGCC	<input type="checkbox"/> Yes	<input type="checkbox"/> No	Date: _____	<input type="checkbox"/> Yes	<input type="checkbox"/> No	Date: _____	<input type="checkbox"/> Yes	<input type="checkbox"/> No
FED-BLM	<input type="checkbox"/> Yes	<input type="checkbox"/> No	Date: _____	<input type="checkbox"/> Yes	<input type="checkbox"/> No	Date: _____	<input type="checkbox"/> Yes	<input type="checkbox"/> No
CDPHE	<input type="checkbox"/> Yes	<input type="checkbox"/> No	Date: _____	<input type="checkbox"/> Yes	<input type="checkbox"/> No	Date: _____	<input type="checkbox"/> Yes	<input type="checkbox"/> No
LEPC	<input type="checkbox"/> Yes	<input type="checkbox"/> No	Date: _____	<input type="checkbox"/> Yes	<input type="checkbox"/> No	Date: _____	<input type="checkbox"/> Yes	<input type="checkbox"/> No
NRC	<input type="checkbox"/> Yes	<input type="checkbox"/> No	Date: _____	<input type="checkbox"/> Yes	<input type="checkbox"/> No	Date: _____	<input type="checkbox"/> Yes	<input type="checkbox"/> No
FIRE CHIEF	<input type="checkbox"/> Yes	<input type="checkbox"/> No	Date: _____	<input type="checkbox"/> Yes	<input type="checkbox"/> No	Date: _____	<input type="checkbox"/> Yes	<input type="checkbox"/> No

**THIS REPORT MUST BE FILED AND SUBMITTED IMMEDIATELY
OF THE INCIDENT TO THE URSA SPILL COORDINATOR**

GARFIELD COUNTY SCHOOL DISTRICT NO. 16 **2018-2019 SCHOOL YEAR**

File: ICA-E

JULY 2018						
S	M	T	W	T	F	S
1	2	3	H	5	6	7
8	9	10	11	12	13	14
15	16	17	18	19	20	21
22	23	24	25	26	27	28
29	30	31				

JANUARY 2019						
S	M	T	W	T	F	S
		H	2	3	4	5
6	7	W	9	10	11	12
13	PD	15	16	17	18	19
20	H	22	23	24	25	26
27	PD	29	30	31		

AUGUST 2018						
S	M	T	W	T	F	S
			1	2	3	4
5	6	7	8	9	BC	11
12	PD	PD	PD	PD	W	18
19	W	21	22	23	24	25
26	27	28	29	30	31	

FEBRUARY 2019						
S	M	T	W	T	F	S
					1	2
3	4	5	6	7	8	9
10	PD	12	13	14	15	16
17	H	19	20	21	22	23
24	SL	SL	27	28		

SEPTEMBER 2018						
S	M	T	W	T	F	S
						1
2	H	4	5	6	7	8
9	10	11	12	13	14	15
16	PD	18	19	20	21	22
23	24	25	26	27	28	29
30						

MARCH 2019						
S	M	T	W	T	F	S
					1	2
3	4	5	6	7	Q	9
10	W	12	13	14	15	16
17	18	19	20	21	22	23
24	25	26	27	28	29	30
31						

OCTOBER 2018						
S	M	T	W	T	F	S
	PD	2	3	4	5	6
7	8	9	10	11	Q	13
14	W	16	17	18	19	20
21	22	23	24	25	26	27
28	SL	SL	31			

APRIL 2019						
S	M	T	W	T	F	S
	PD	2	3	4	5	6
7	8	9	10	11	12	13
14	PD	16	17	18	19	20
21	22	23	24	25	26	27
28	PD	30				

NOVEMBER 2018						
S	M	T	W	T	F	S
				1	2	3
4	5	6	7	8	9	10
11	PD	13	14	15	16	17
18	19	20	21	H	23	24
25	PD	27	28	29	30	

MAY 2019						
S	M	T	W	T	F	S
			1	2	3	4
5	AP	7	8	9	10	11
12	AP	14	15	16	QHS	18
19	20	21	22	Q	W	25
26	H	28	29	30	31	

DECEMBER 2018						
S	M	T	W	T	F	S
						1
2	3	4	5	6	7	8
9	PD	11	12	13	14	15
16	17	18	19	20	Q	22
23	24	H	26	27	28	29
30	31					

JUNE 2019						
S	M	T	W	T	F	S
						1
2	3	4	5	6	7	8
9	10	11	12	13	14	15
16	17	18	19	20	21	22
23	24	25	26	27	28	29
30						

SCHOOLS NOT IN SESSION

All School Holidays & Breaks

July 4 ~ Independence Day	Jan. 21 ~ Martin Luther King Day
Sept. 3 ~ Labor Day	Feb. 18 ~ Presidents' Day
Nov. 19 - 23 ~ Thanksgiving Break	Mar. 18 ~ 22 ~ Spring Break
Dec. 24 ~ Jan. 4 ~ Winter Break	May 27 ~ Memorial Day

Student-Led Conferences

October 29	District-Wide ~ Hours to be Determined
October 30	CFL, BUE, GVMS Only ~ Hours to be Determined ~ GVHS in Session
February 25	District-Wide ~ Hours to be Determined
February 26	CFL, BUE, GVMS Only ~ Hours to be Determined ~ GVHS in Session

Teacher Professional Development/Workdays & Miscellaneous

August 10	New Teacher Boot Camp
August 13, 14, 15, 16	Professional Development
August 17, 20	Teacher Workdays
August 21, 22	CFL Kindergarten Pre-Assessments ~ Mandatory Half-Day Assigned Sessions
September 17	Professional Development
October 1	Professional Development
October 15	Teacher Workday
November 12	Professional Development
November 16	CFL Thanksgiving Feast/Community Day ~ No School CFL Only
November 26	Professional Development
December 10	Professional Development
January 8	Teacher Workday
January 14, 28	Professional Development
February 11	Professional Development
March 11	Teacher Workday
April 1, 15, 29	Professional Development
May 6, 13	Advance Placement Testing ~ GVHS in Session
May 13	Professional Development
May 24	Teacher Workday ~ Checkout

Statistical Record Data & General Information

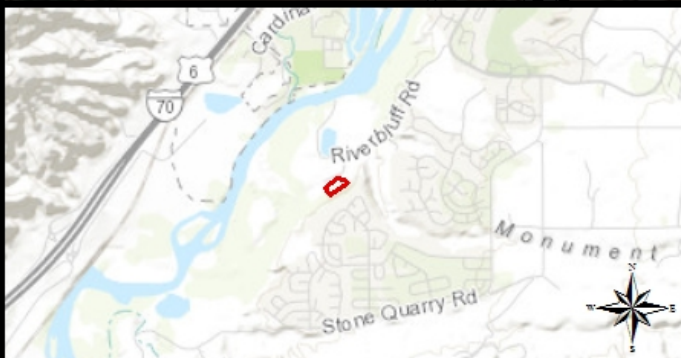
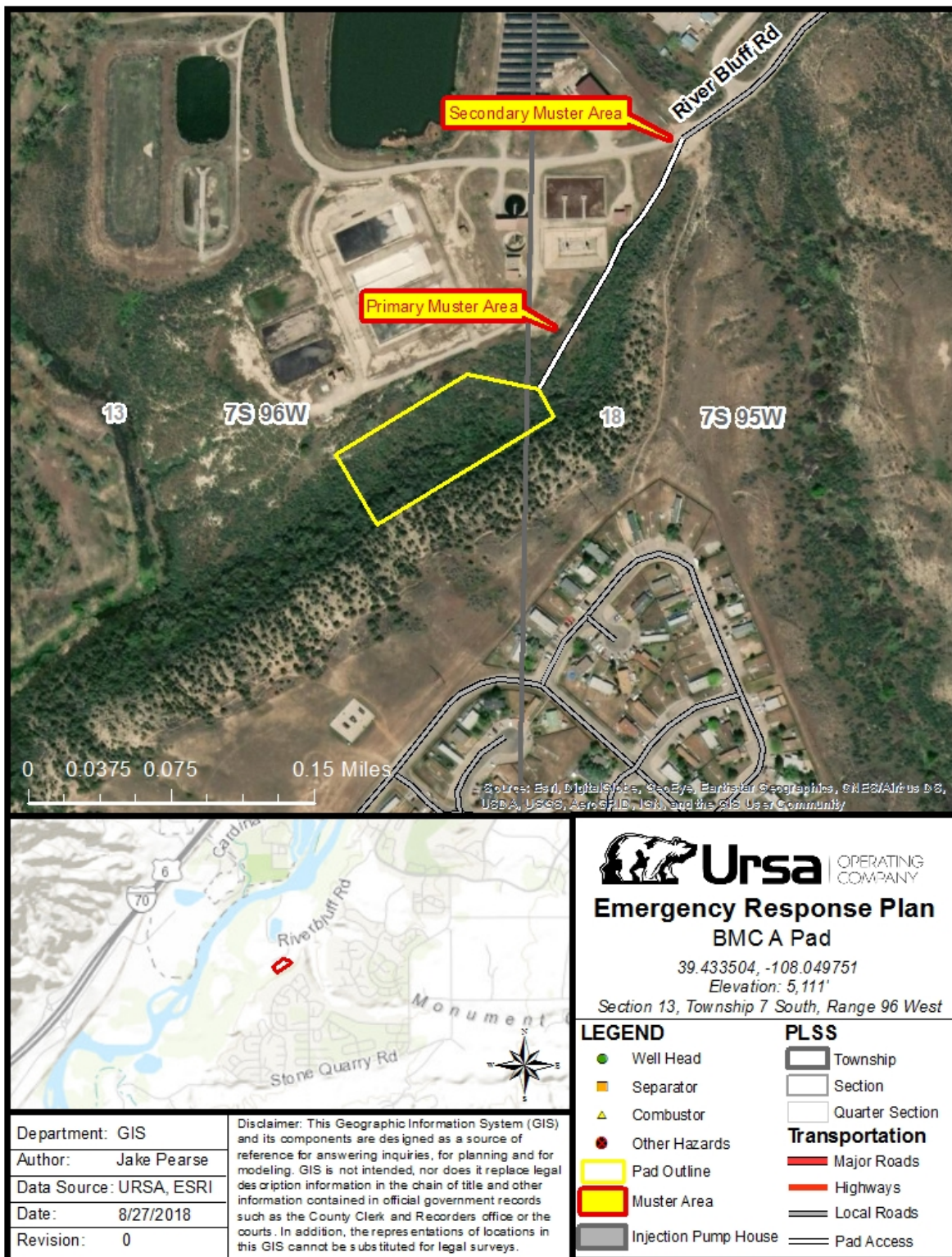
First Day of School	August 21
First Day of School ~ Preschool	August 28
First Quarter Ends	October 12
	CFL/BUE/GVMS/GVHS ~ 32 Days
Second Quarter Ends	December 21
	CFL ~ 34 Days
	BUE/GVMS ~ 35 Days
	GVHS ~ 36 Days
Third Quarter Ends	March 8
	CFL/BUE/GVMS ~ 34 days
	GVHS ~ 35 Days
Fourth Quarter Ends/	May 17
Last Day of School	GVHS Only ~ 38 Days
Fourth Quarter Ends/	May 23
Last Day of School	CFL/BUE/GVMS ~ 39 Days
Teachers' First/Last Day	August 13/May 24
Assistant Principals' First Day	August 1
Assistant Principals' Last Day	June 5
Principals' First Day	Elem., M.S., August 1
Principals' Last Day	Elem., M.S., June 12
Graduation "Class of 2019"	May 25 (10:00 a.m.)
	H.S., July 25
	H.S., June 26

KEY

H	All School Holidays/Breaks
	Board of Education Regular Meetings ~ 6:00 p.m. ~ 3 rd Tuesday (Except July/November/December 2018 and January/March 2019)
	CFL Kindergarten Pre-Assessments
	CFL Thanksgiving Feast/Community Day ~ No School CFL Only
Q	End of a Quarter
	First Day of School
	First Day of School ~ Preschool
	Grand Valley High School Graduation (10:00 a.m.)
AP	Advanced Placement Testing ~ GVHS Only
BC	New Teacher Boot Camp
PD	Professional Development
W	Teacher Workday
SL	Student-Led Conferences

Adopted: January 23, 2018

Our Mission "As a result of our efforts, all students will be successfully prepared for life in a safe and nurturing environment."



Ursa | OPERATING COMPANY

Emergency Response Plan BMC A Pad

39.433504, -108.049751

Elevation: 5,111'

Section 13, Township 7 South, Range 96 West

LEGEND

- Well Head
- Separator
- ▲ Combustor
- Other Hazards
- ▭ Pad Outline
- ▭ Muster Area
- ▭ Injection Pump House

PLSS

- ▭ Township
- ▭ Section
- ▭ Quarter Section

Transportation

- ▬ Major Roads
- ▬ Highways
- ▬ Local Roads
- ▬ Pad Access

Department: GIS

Author: Jake Pearse

Data Source: Ursa, ESRI

Date: 8/27/2018

Revision: 0

Disclaimer: This Geographic Information System (GIS) and its components are designed as a source of reference for answering inquiries, for planning and for modeling. GIS is not intended, nor does it replace legal description information in the chain of title and other information contained in official government records such as the County Clerk and Recorders office or the courts. In addition, the representations of locations in this GIS cannot be substituted for legal surveys.

