

T8N R80W, 6TH PM

SandRidge Exploration & Production, LLC

SURFACE HOLE LOCATION

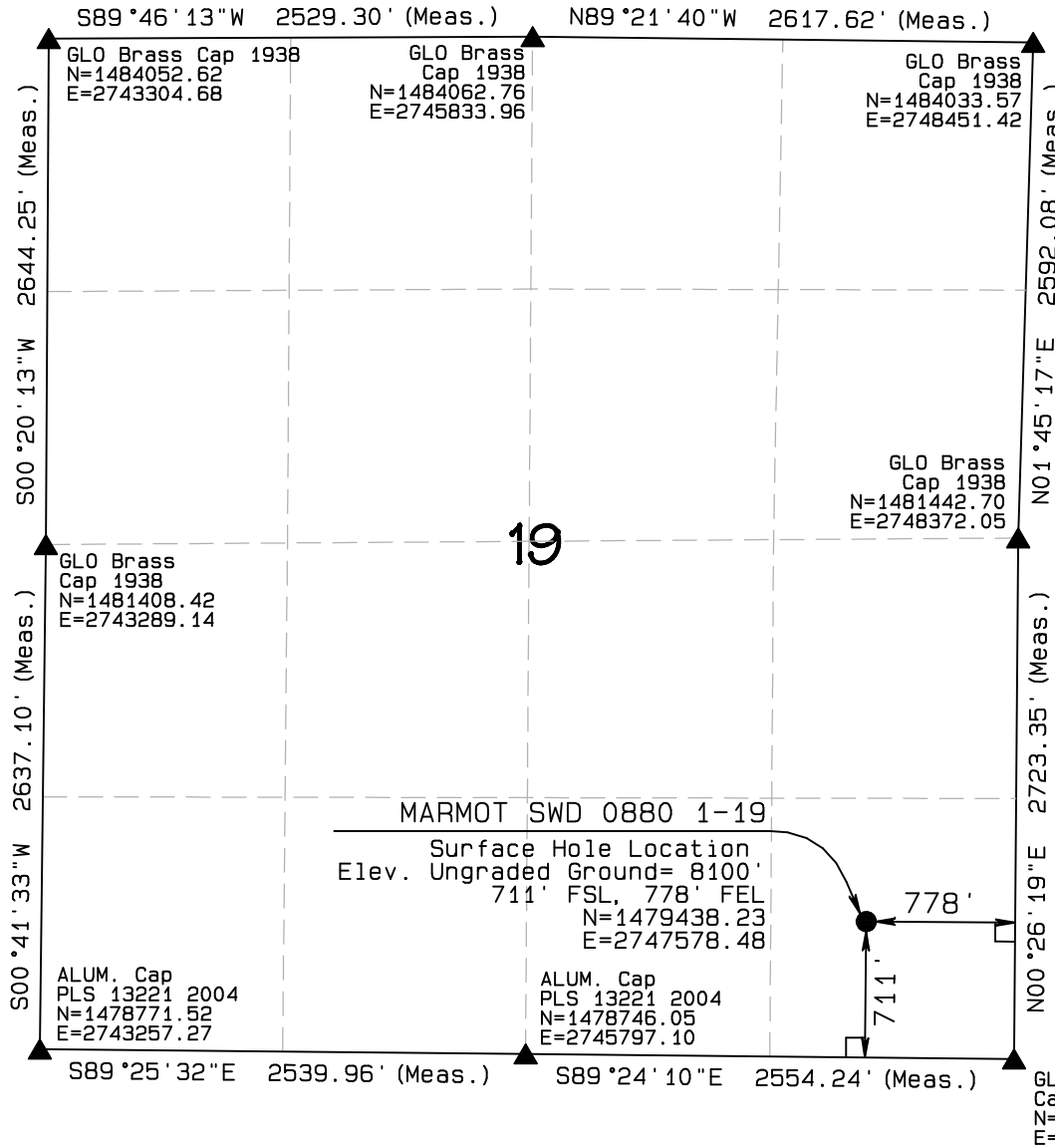
MARMOT SWD 0880 1-19 located as shown in the SE1/4SE1/4 of Section 19, T8N, R80W, 6th P.M., Jackson County, Colorado.

BASIS OF BEARINGS:

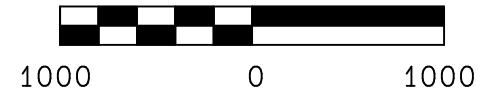
US STATE PLANE 1983
CO NORTH 0501 GRID

BASIS OF ELEVATION

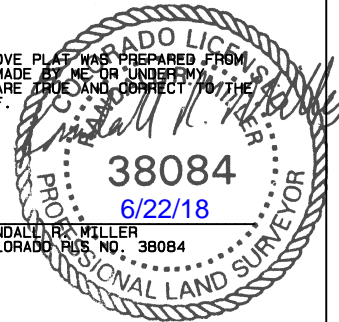
NAVD88 Computed using GEOID12B as measured using a combination of Static and Kinematic GPS based on an OPUS Solution Report.



GRAPHIC SCALE 1"=1000'



THIS IS TO CERTIFY THAT THE ABOVE PLAT WAS PREPARED FROM FIELD NOTES OF ACTUAL SURVEYS MADE BY ME OR UNDER MY SUPERVISION AND THAT THE SAME ARE TRUE AND CORRECT TO THE BEST OF MY KNOWLEDGE AND BELIEF.



LEGEND

90° SYMBOL
FOUND CORNER
PROPOSED WELL
PROPOSED BHL/LPL



NAD 83 (SURFACE LOCATION)

LATITUDE=40.645891°N
LONGITUDE=106.409662°W

PDOP = 1.310

NORTH PARK ENGINEERING & CONSULTING, INC.

P.O. BOX 395
WALDEN, CO 80480
(970) 723-3725

DATE OF FIELD WORK: JUNE 19, 2018 DRAWING COMPLETION: JUNE 21, 2018

SURVEYED BY: LRK DRAWN BY: TKH CHECKED BY: RRM