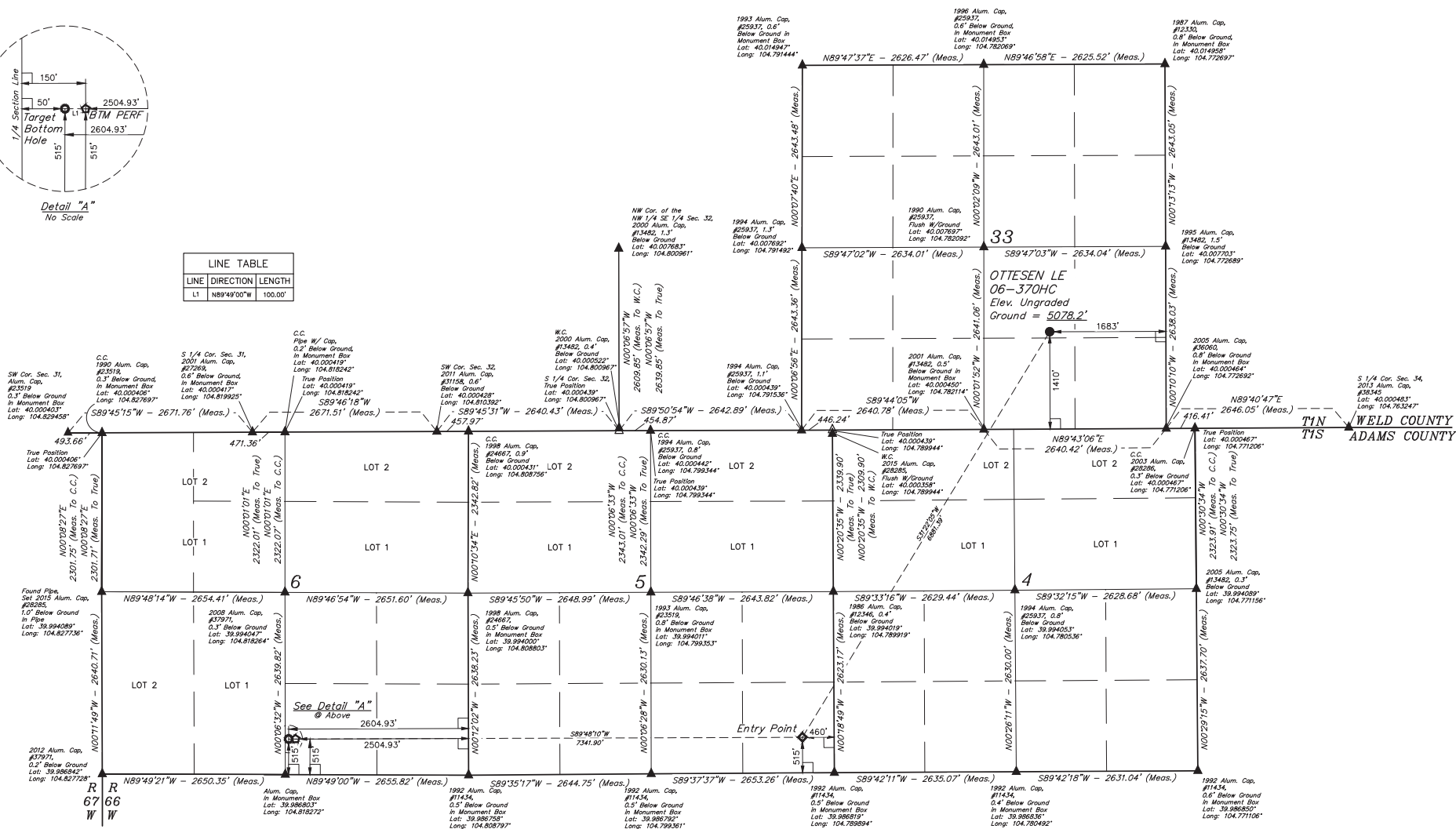


L = 90° SYMBOL
 ● = PROPOSED WELLHEAD.
 ◆ = ENTRY POINT.
 ○ = BTM PERF.
 ○ = TARGET BOTTOM HOLE.
 ▲ = SECTION CORNERS
 LOCATED. (NAD 83)
 △ = SECTION CORNERS
 RE-ESTABLISHED.
 (Not Set on Ground.)
 (NAD 83)

LINE TABLE		
LINE	DIRECTION	LENGTH
L1	N89°49'00"W	100.00'



PDOP = 1.5			
SAD 83 (SURFACE LOCATION)		SAD 83 (ENTRY POINT)	
LATITUDE = 40°09'15.57" (04.004325)		LATITUDE = 39°59'17.62" (9.988328)	
LONGITUDE = 104°40'43.31" (04.778607)		LONGITUDE = 104°47'29.54" (04.791539)	
SAD 27 (SURFACE LOCATION)		SAD 27 (ENTRY POINT)	
LATITUDE = 40°09'15.63" (04.004342)		LATITUDE = 39°59'17.68" (9.988344)	
LONGITUDE = 104°46'41.42" (04.778172)		LONGITUDE = 104°47'27.65" (04.791014)	
SAD 83 (BTM PERM)		SAD 83 (BTM PERM)	
LATITUDE = 39°59'17.57" (9.988213)		LATITUDE = 39°59'17.62" (9.988229)	
LONGITUDE = 104°49'03.85" (04.817755)		LONGITUDE = 104°49'01.94" (04.817207)	
SAD 83 (TARGET BOTTOM HOLE)		SAD 27 (TARGET BOTTOM HOLE)	
LATITUDE = 39°59'17.57" (9.988215)		LATITUDE = 39°59'17.63" (9.988321)	
LONGITUDE = 104°49'05.13" (04.818082)		LONGITUDE = 104°49'05.23" (04.818756)	

BASIS OF BEARINGS
BASIS OF BEARINGS IS A G.P.S. OBSERVATION
BASIS OF ELEVATION
USGS COOPERATIVE BASE NETWORK CONTROL STATION,
DESIGNATION "JR 53 5026". NGS DATA SHEET LISTS THE NAVD 88
ELEVATION AS BEING 5028 FEET.

U.S. UTAH
ENGINEERING & LAND SURVEYING

UELS, LLC
Corporate Office * 85 South 200 East
Vernal, UT 84078 * (435) 789-1017

THIS IS TO CERTIFY THAT THE ABOVE DESCRIBED LAND AND
NOTES OF ACTUAL SURVEYS MADE BY ME OR TO THE BEST OF MY
KNOWLEDGE AND BELIEF.

John A. 28285

REGISTERED LAND SURVEYOR
REGISTRATION NO. 28285
STATE OF MISSISSIPPI

12-17

REV: 3 12-01-17 K.B. (BTM PERF ADD, NAME, EP & TBH CHANGE)

GREAT WESTERN OPERATING COMPANY
OTTESEN LE 06-370HC
NW 1/4 SE 1/4, SECTION 33, T1N, R66W, 6th P.M.
WELD COUNTY, COLORADO

SURVEYED BY: GREG WEIMER	DATE: 11-03-17
DRAWN BY: K.B.	DATE DRAWN: 11-11-15
SCALE: 1" = 1000'	

WELL LOCATION PLAT