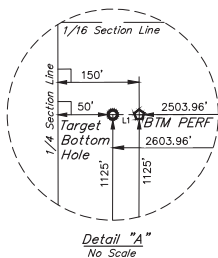
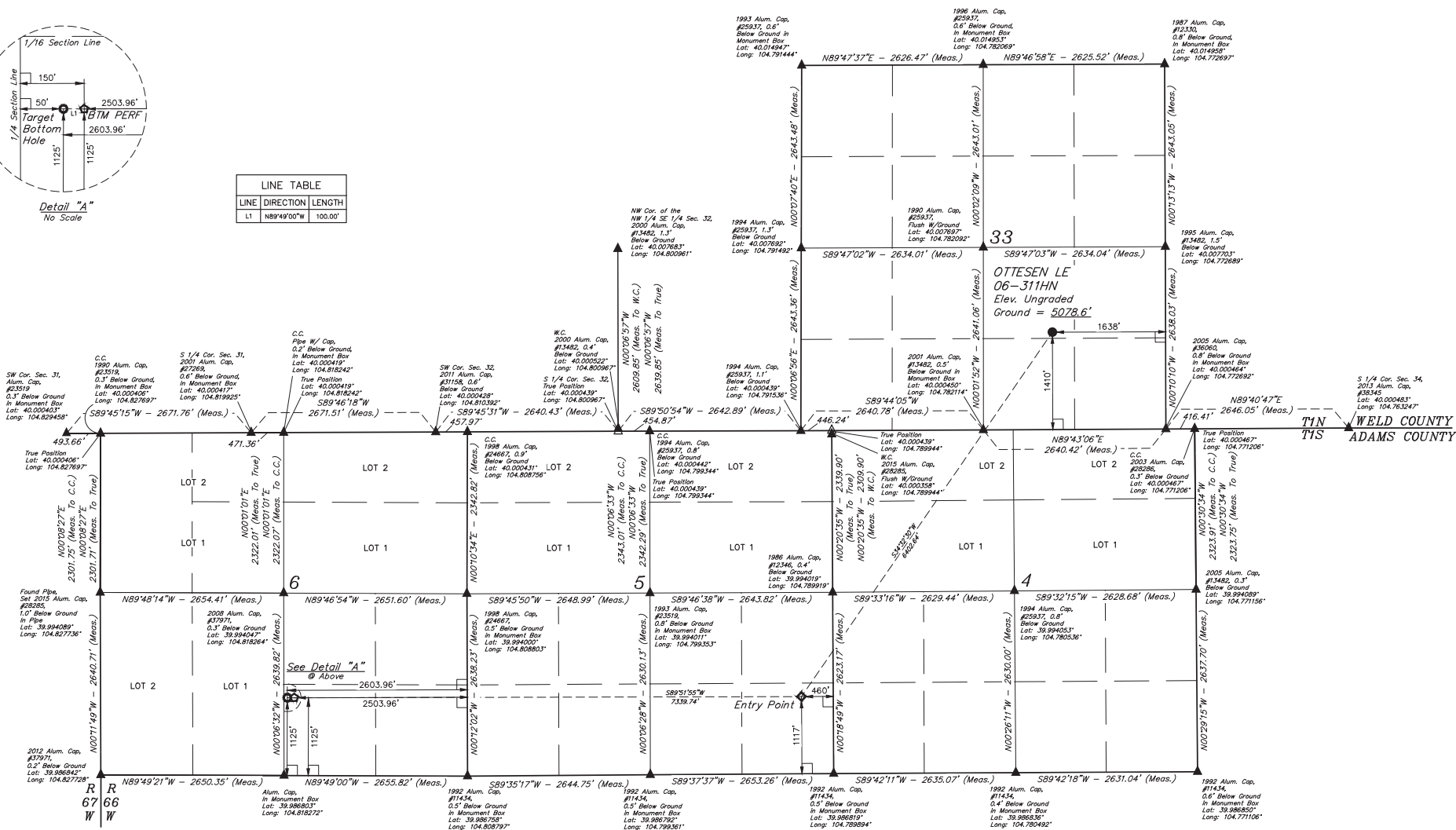


LEGEND:

- 90° SYMBOL
- PROPOSED WELLHEAD
- ENTRY POINT
- BTM PERF.
- TARGET BOTTOM HOLE
- SECTION CORNERS LOCATED (NAD 83)
- SECTION CORNERS RE-ESTABLISHED (Not Set on Ground) (NAD 83)



LINE TABLE		
LINE	DIRECTION	LENGTH
L1	N89°49'00"W	100.00'



PDOP = 1.5

NAD 83 (SURFACE LOCATION)	NAD 83 (ENTRY POINT)	NAD 83 (BTM PERF)	NAD 83 (TARGET BOTTOM HOLE)
LATITUDE = 40°09'15.57" (04.004325)	LATITUDE = 39°59'23.57" (04.989881)	LATITUDE = 39°59'23.59" (04.989887)	LATITUDE = 39°59'23.60" (04.989889)
LONGITUDE = 104°46'42.73" (04.78536)	LONGITUDE = 104°47'29.56" (04.791544)	LONGITUDE = 104°47'03.84" (04.817733)	LONGITUDE = 104°49'05.12" (04.818900)
NAD 27 (SURFACE LOCATION)	NAD 27 (ENTRY POINT)	NAD 27 (BTM PERF)	NAD 27 (TARGET BOTTOM HOLE)
LATITUDE = 40°09'15.63" (04.004321)	LATITUDE = 39°59'23.63" (04.989897)	LATITUDE = 39°59'23.65" (04.989903)	LATITUDE = 39°59'23.66" (04.989905)
LONGITUDE = 104°46'42.78" (04.785011)	LONGITUDE = 104°47'27.67" (04.791019)	LONGITUDE = 104°47'00.94" (04.818705)	LONGITUDE = 104°49'02.61" (04.818752)

BASIS OF BEARINGS
BASIS OF BEARINGS IS A G.P.S. OBSERVATION
BASIS OF ELEVATION
USGS COOPERATIVE BASE NETWORK CONTROL STATION,
DESIGNATION "JR 53 5026". NGS DATA SHEET LISTS THE NAVD 88
ELEVATION AS BEING 5028 FEET.



UELLS, LLC
Corporate Office * 85 South 200 East
Vernal, UT 84078 * (435) 789-1017

T1N, R66W, 6th P.M.



CERTIFICATE OF RECORD
THIS IS TO CERTIFY THAT THE ABOVE DESCRIBED SURVEY WAS MADE IN ACCORDANCE WITH THE
NOTES OF ACTUAL SURVEYS MADE BY THE SURVEYOR AND TO THE BEST OF HIS KNOWLEDGE AND BELIEF.
RECORDED LAND SURVEYOR
STATE OF COLORADO
12/06

REV: 3 12-01-17 K.B. (BTM PERF ADD, NAME, EP & TBH CHANGED)

GREAT WESTERN OPERATING COMPANY
OTTENSEN LE 06-311HN
NW 1/4 SEC 14, SECTION 33, T1N, R66W, 6th P.M.
WELD COUNTY, COLORADO

SURVEYED BY: DALLAS NIELSEN, C.M.	DATE: 06-30-16
DRAWN BY: K.B.	DATE DRAWN: 11-11-15
SCALE: 1" = 1000'	
WELL LOCATION PLAT	