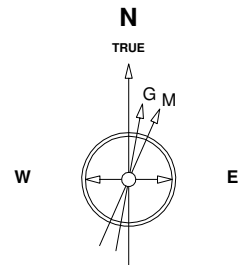


Great Western Operating Company, LLC

Location Colorado
Field Wattenburg
Installation Ottesen
Slot S09 - Ottesen LE 06-250HN
Well Ottesen LE 06-250HN
Wellbore Ottesen LE 06-250HN (PWB)

Created by admin
Date plotted 28-Dec-2017
Plot reference is Ottesen LE 06-250HN (PWB).
Ref wellpath is Ottesen LE 06-250HN (PWP#1).
Coordinates are in Feet reference S09 - Ottesen LE 06-250HN.
True Vertical Depths are reference Rig Datum.
Measured Depths are reference Rig Datum.
Rig Datum: Planned Datum #1
Rig Datum to Mean Sea Level: 5093.60 ft.
Plot North is aligned to TRUE North.



Scale 1 cm = 500 ft

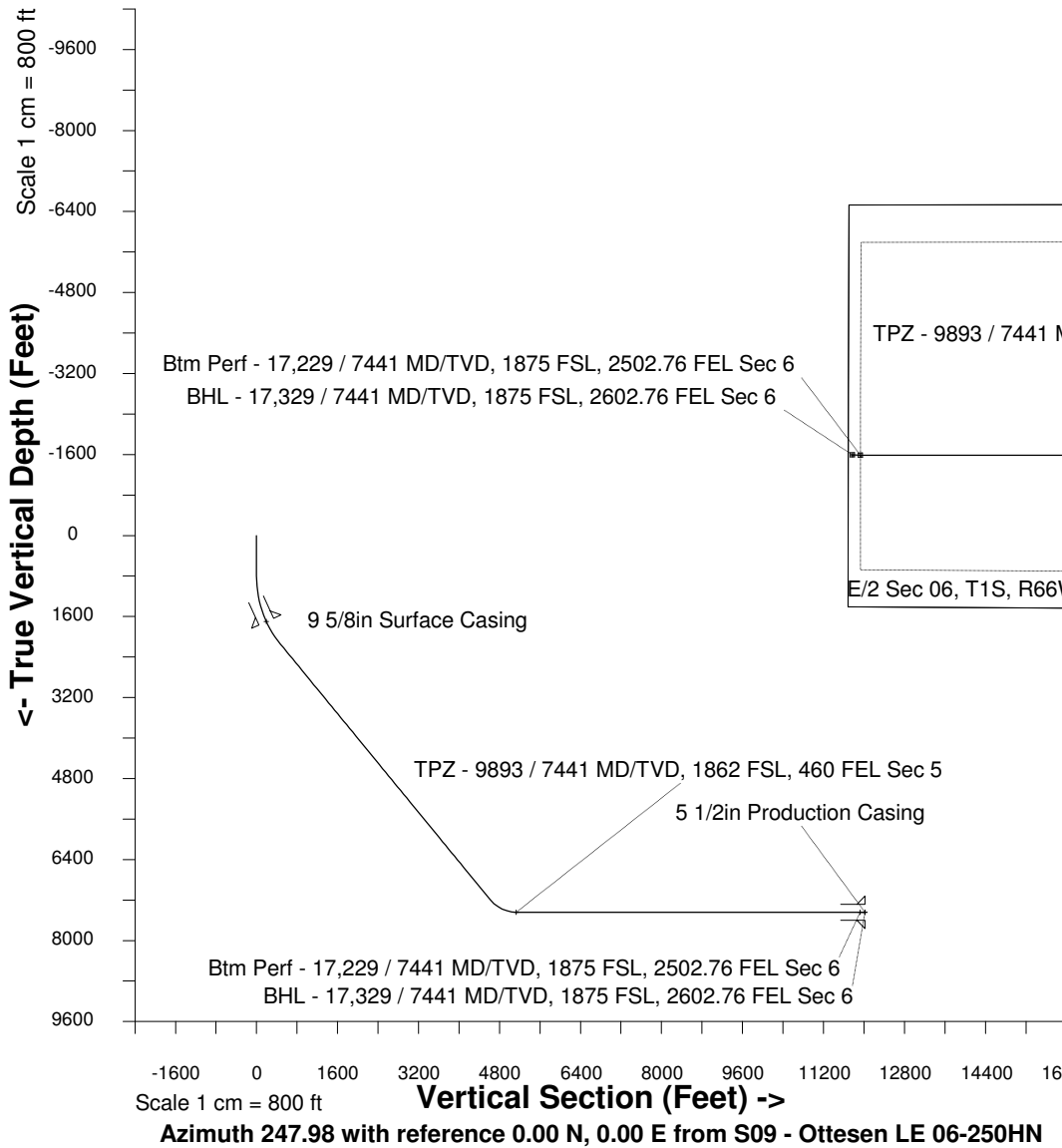
East (Feet) ->

-15000 -14000 -13000 -12000 -11000 -10000 -9000 -8000 -7000 -6000 -5000 -4000 -3000 -2000 -1000 0 1000 2000

8-Aug-2016
IGRF Model [1900.0-2020.0] Dip: 66.56 deg Field: 52280.9 nT
Lat: N40 0 16.5600 Long: W104 46 43.1184 Elev: 5073.60 ft
Magnetic North is 8.28 deg East of TRUE North
To correct azimuth from Magnetic to TRUE add 8.28 deg

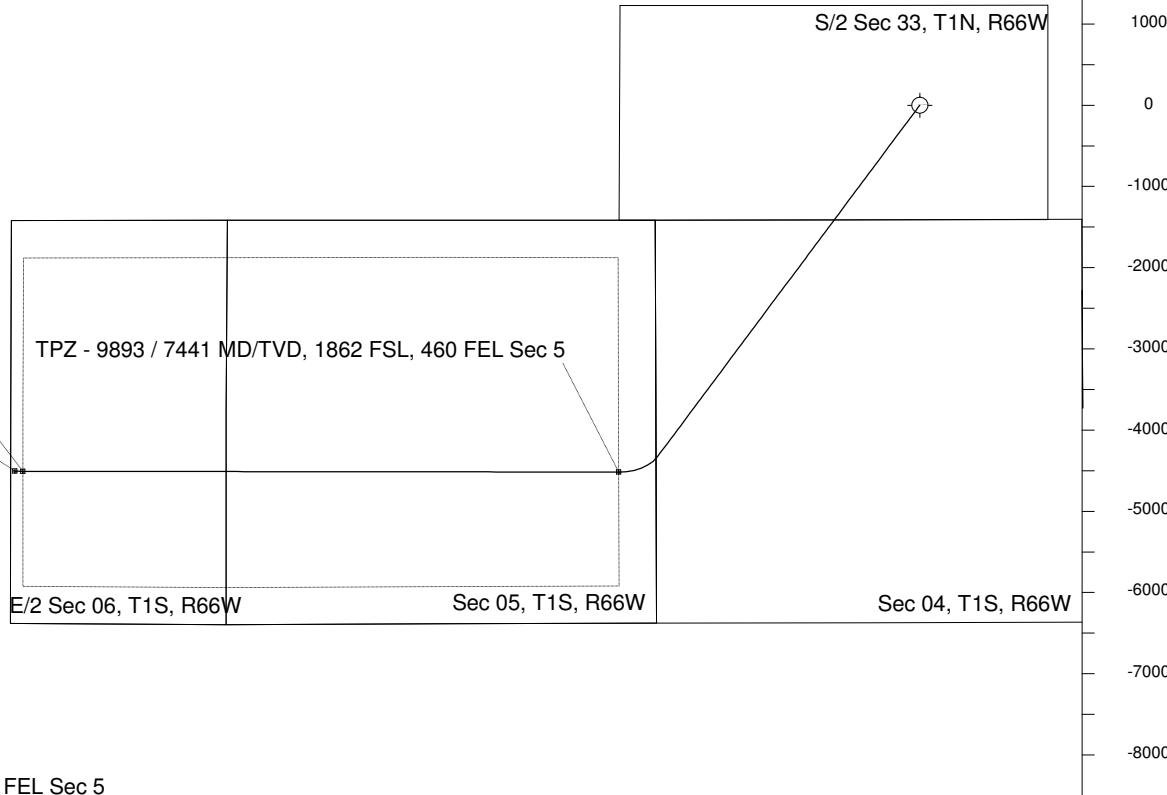
<- True Vertical Depth (Feet)

Scale 1 cm = 800 ft



<- North(Feet)

Scale 1 cm = 500 ft



WELL PROFILE DATA

Point	MD	Inc	Azi	TVD	North	East	deg/100ft	V. Sect
Tie on	0.00	0.00	0.00	0.00	S 0.00	W 0.00		-0.00
KOP	800.00	0.00	216.74	800.00	S 0.00	W 0.00	0.00	-0.00
End of Build	2260.88	43.83	216.74	2122.53	S 426.34	W 318.22	9.84	454.86
End of Hold	9297.35	43.83	216.74	7198.94	S 4331.12	W 3232.79	0.00	4620.91
Target TPZ - ... Sec 5	9893.49	90.00	270.07	7441.00	S 4516.88	W 3707.28	36.09	5130.44
Target Btm Pe... Sec 6	17228.77	90.00	270.07	7441.00	S 4507.42	W 11042.55	0.00	11927.00
End of Turn	17232.19	90.00	270.45	7441.00	S 4507.40	W 11045.98	36.09	11930.17
T.D. & Target BHL...c 6	17328.52	90.00	270.45	7441.00	S 4506.64	W 11142.30	0.00	12019.18