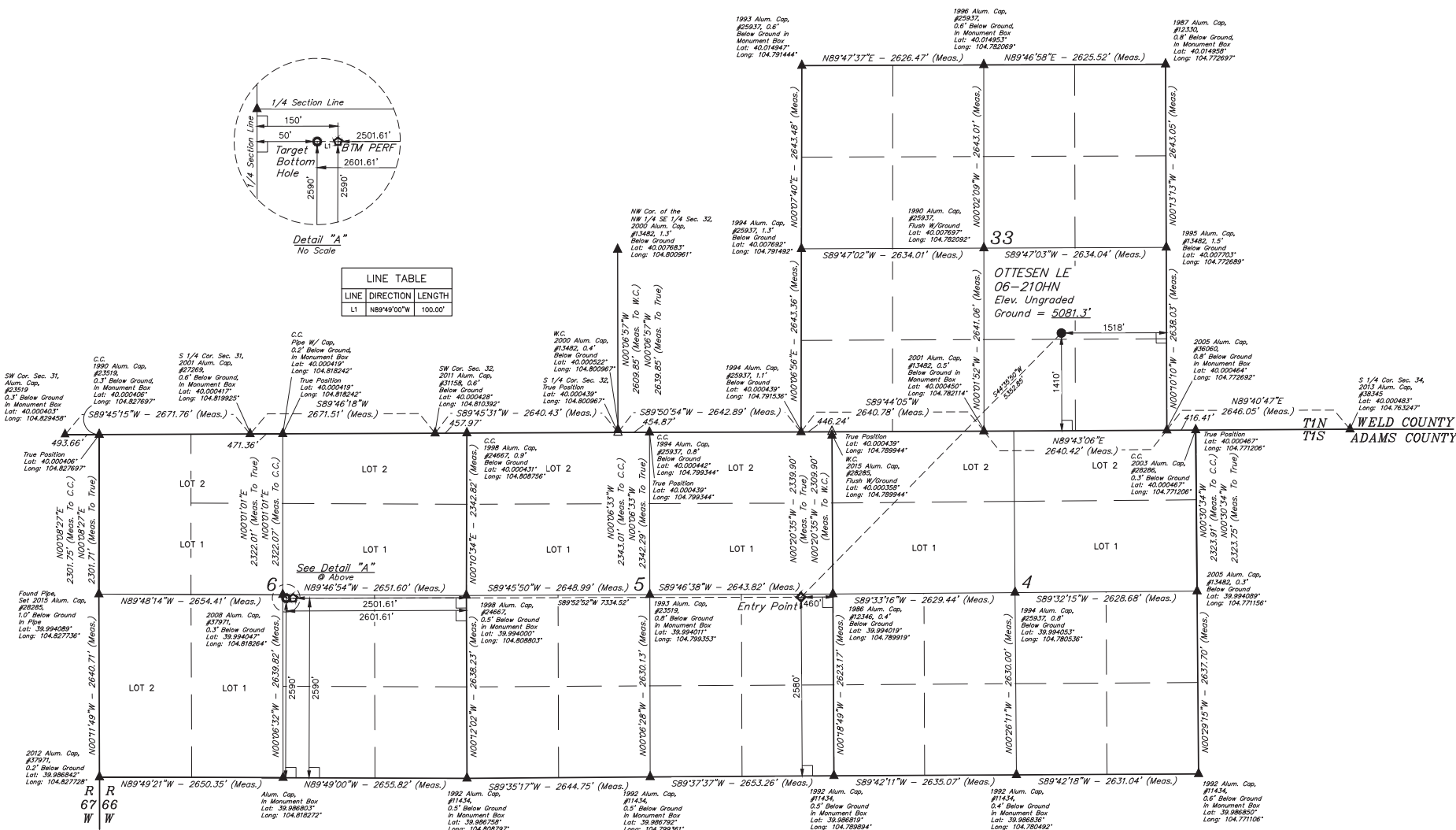


[= 90° SYMBOL.
 ● = PROPOSED WELLHEAD.
 ◆ = ENTRY POINT.
 ☆ = BTM PERF.
 ○ = TARGET BOTTOM HOLE.
 ▲ = SECTION CORNERS
 LOCATED. (NAD 83)
 △ = SECTION CORNERS
 RE-ESTABLISHED.
 (Not Set on Ground.)
 (NAD 83)

Detail "A"
No Scale

LINE TABLE		
LINE	DIRECTION	LENGTH
L1	N89°49'00"W	100.00'



PDOP = 1.4			
NAD 83 (SURFACE LOCATION)		NAD 83 (BTM PERF)	
LATITUDE = 49.0915.157 (40.043435)	NAD 83 (ENTRY POINT)	LATITUDE = 49.0915.070 (40.093908)	NAD 83 (TARGET BOTTOM HOLE)
LONGITUDE = 104.4641.191 (104.778108)	LONGITUDE = 104.4729.617 (104.791558)	LONGITUDE = 104.4903.831 (104.817330)	LATITUDE = 49.4905.111 (104.818887)
NAD 27 (SURFACE LOCATION)		NAD 27 (BTM PERF)	
LATITUDE = 49.0915.157 (40.043432)	NAD 27 (ENTRY POINT)	LATITUDE = 49.0915.070 (40.093924)	NAD 27 (TARGET BOTTOM HOLE)
LONGITUDE = 104.4649.292 (104.777881)	LONGITUDE = 104.4727.721 (104.791031)	LONGITUDE = 104.4901.953 (104.817202)	LATITUDE = 49.4903.291 (104.817559)

BASIS OF BEARINGS
BASIS OF BEARINGS IS A G.P.S. OBSERVATION
BASIS OF ELEVATION
USGS COOPERATIVE BASE NETWORK CONTROL STATION,
DESIGNATION "JR 53 5026". NGS DATA SHEET LISTS THE NAVD 88
ELEVATION AS BEING 5028 FEET.

REV: 3 12-01-17 K.B. (BTM PERF ADD, NAME, EP & TBH CHANGE)

GREAT WESTERN OPERATING COMPANY
OTTESEN LE 06-210HN
NW 1/4 SE 1/4, SECTION 33, T1N, R66W, 6th P.M.
WELD COUNTY, COLORADO

SURVEYED BY: DALLAS NIELSEN, C.M.	DATE: 06-30-16
DRAWN BY: K.B.	DATE DRAWN: 11-11-15
SCALE: 1" = 1000'	

WELL LOCATION PLAT



UELS, LLC
Corporate Office * 85 South 200 East
Vernal, UT 84078 * (435) 789-1017

