

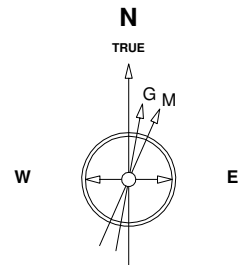
# Great Western Operating Company, LLC

**Location** Colorado  
**Field** Wattenburg  
**Installation** Ottesen

**Slot** S14 - Ottesen LE 06-191HC  
**Well** Ottesen LE 06-191HC  
**Wellbore** Ottesen LE 06-191HC (PWB)

Created by admin  
Date plotted 28-Dec-2017

Plot reference is Ottesen LE 06-191HC (PWB).  
Ref wellpath is Ottesen LE 06-191HC (PWP#1).  
Coordinates are in Feet reference S14 - Ottesen LE 06-191HC.  
True Vertical Depths are reference Rig Datum.  
Measured Depths are reference Rig Datum.  
Rig Datum: Planned Datum #1  
Rig Datum to Mean Sea Level: 5093.60 ft.  
Plot North is aligned to TRUE North.



Scale 1 cm = 500 ft

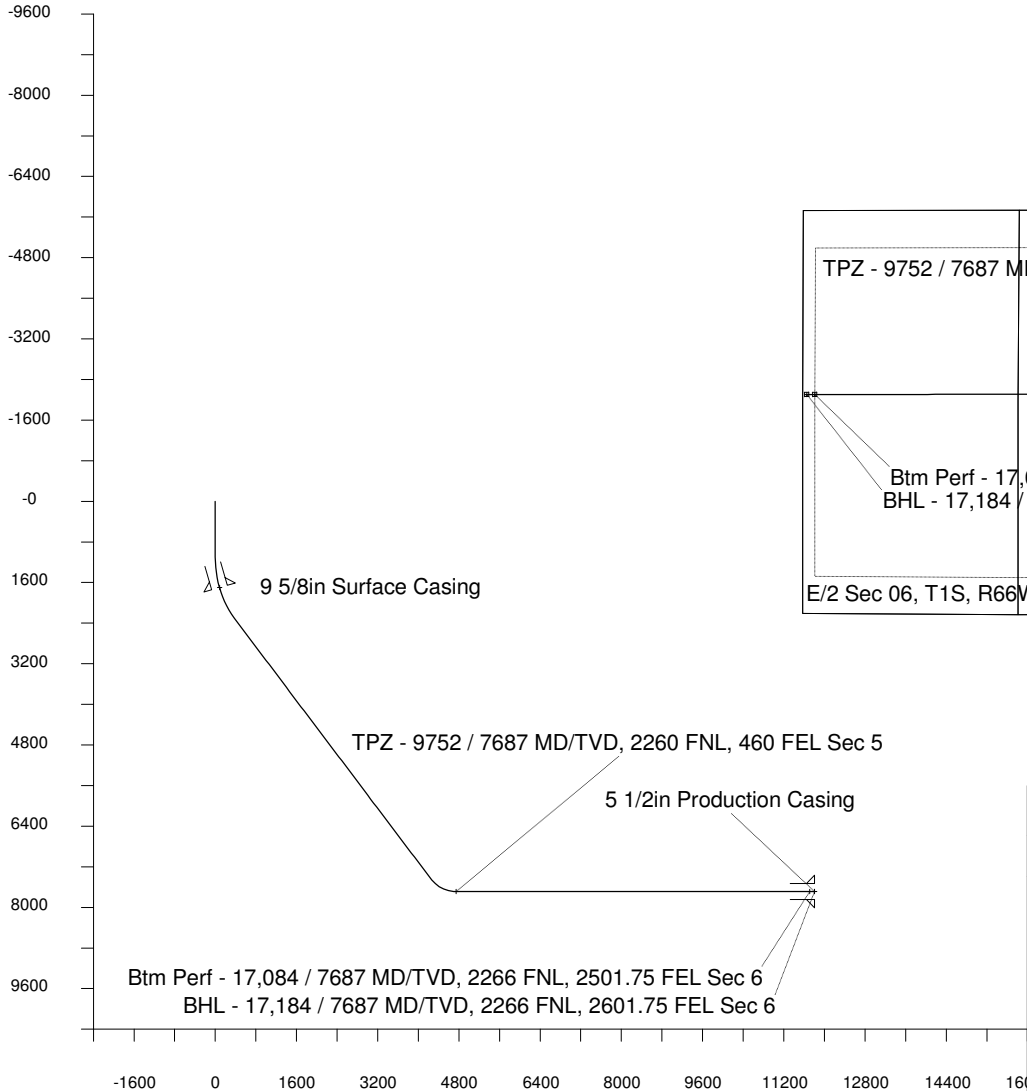
East (Feet) ->

-15000 -14000 -13000 -12000 -11000 -10000 -9000 -8000 -7000 -6000 -5000 -4000 -3000 -2000 -1000 0 1000 2000

8-Aug-2016  
IGRF Model [1900.0-2020.0] Dip: 66.56 deg Field: 52280.9 nT  
Lat: N40 0 16.5600 Long: W104 46 43.1184 Elev: 5073.60 ft  
Magnetic North is 8.28 deg East of TRUE North  
To correct azimuth from Magnetic to TRUE add 8.28 deg

Scale 1 cm = 800 ft

<- True Vertical Depth (Feet)



Scale 1 cm = 800 ft

Vertical Section (Feet) ->

Azimuth 251.81 with reference 0.00 N, 0.00 E from S14 - Ottesen LE 06-191HC

2000

1000

0

-1000

-2000

-3000

-4000

-5000

-6000

-7000

-8000

<- North(Feet)

Scale 1 cm = 500 ft

## WELL PROFILE DATA

Point	MD	Inc	Azi	TVD	North	East	deg/100ft	V. Sect
Tie on	0.00	0.00	0.00	0.00	S 0.00	W 0.00		-0.00
KOP	1100.00	0.00	223.29	1100.00	S 0.00	W 0.00	0.00	-0.00
End of Build	2455.06	40.65	223.29	2344.20	S 335.45	W 316.05	9.84	404.97
End of Hold	9175.44	40.65	223.29	7442.83	S 3521.94	W 3318.32	0.00	4251.95
Target TPZ - ... Sec 5	9752.00	90.00	269.92	7687.00	S 3675.00	W 3783.93	36.09	4742.07
Target Btm Pe... Sec 6	17083.95	90.00	269.92	7687.00	S 3685.55	W 11115.88	0.00	11710.90
End of Turn	17084.94	90.00	270.03	7687.00	S 3685.55	W 11116.87	36.09	11711.83
T.D. & Target BHL...c 6	17183.98	90.00	270.03	7687.00	S 3685.51	W 11215.90	0.00	11805.91