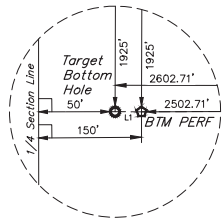


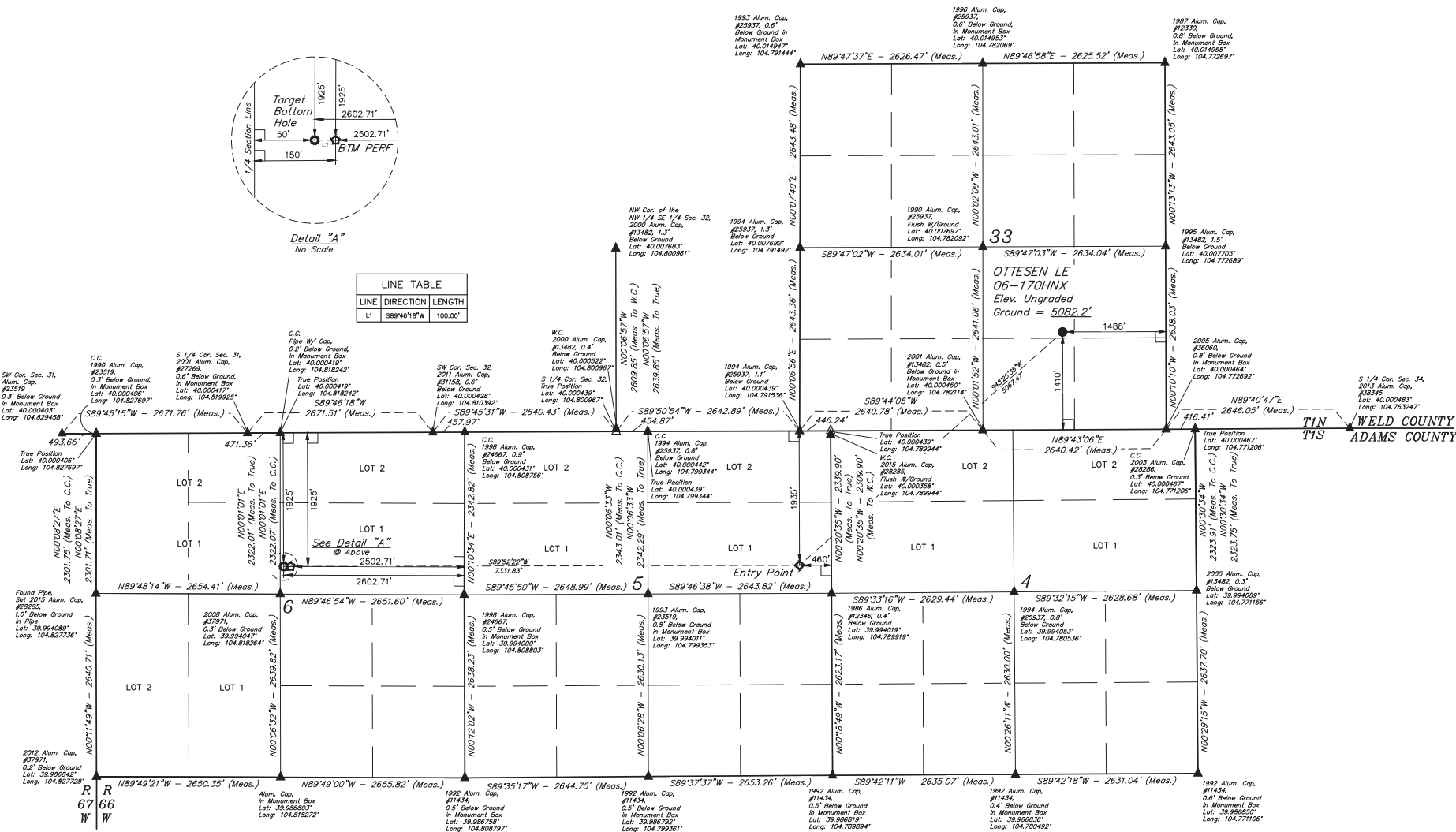
## LEGEND:

- 90° SYMBOL  
 ● PROPOSED WELLHEAD  
 ○ ENTRY POINT  
 ○ BTM PERF.  
 ○ TARGET BOTTOM HOLE  
 ○ SECTION CORNERS LOCATED (NAD 83)  
 △ SECTION CORNERS RE-ESTABLISHED (Not Set on Ground) (NAD 83)



Detail "A"  
No Scale

LINE TABLE		
LINE	DIRECTION	LENGTH
L1	S89°46'18"W	100.00'



PDOP = 1.4

NAD 83 (SURFACE LOCATION)	NAD 83 (ENTRY POINT)	NAD 83 (BTM PERF.)	NAD 83 (TARGET BOTTOM HOLE)
LATITUDE = 40°09'15.5" (40.004335)	LATITUDE = 39°59'42.46" (39.995128)	LATITUDE = 39°59'42.49" (39.995137)	LATITUDE = 39°59'42.49" (39.995136)
LONGITUDE = 104°46'40.80" (104.778009)	LONGITUDE = 104°47'29.63" (104.791564)	LONGITUDE = 104°49'03.81" (104.817726)	LONGITUDE = 104°49'05.10" (104.818083)
NAD 27 (SURFACE LOCATION)	NAD 27 (ENTRY POINT)	NAD 27 (BTM PERF.)	NAD 27 (TARGET BOTTOM HOLE)
LATITUDE = 40°09'15.63" (40.004342)	LATITUDE = 39°59'42.55" (39.995144)	LATITUDE = 39°59'42.55" (39.995153)	LATITUDE = 39°59'42.55" (39.995153)
LONGITUDE = 104°46'38.91" (104.777475)	LONGITUDE = 104°47'27.73" (104.791036)	LONGITUDE = 104°49'01.91" (104.817198)	LONGITUDE = 104°49'03.20" (104.817555)



BASIS OF BEARINGS IS A G.P.S. OBSERVATION  
 BASIS OF ELEVATION  
 USGS COOPERATIVE BASE NETWORK CONTROL STATION,  
 DESIGNATION "JR 53 5026", NGS DATA SHEET LISTS THE NAVD 88  
 ELEVATION AS BEING 5028 FEET.



UELS, LLC  
 Corporate Office \* 85 South 200 East  
 Vernal, UT 84078 \* (435) 789-1017



REV: 3 12-01-17 K.B. (BTM PERF ADD, NAME, EP & TBH CHANGED)

GREAT WESTERN OPERATING COMPANY  
 OTTESEN LE 06-170HNX  
 NW 1/4 SEC 14, SECTION 33, T1N, R66W, 6th P.M.  
 WELD COUNTY, COLORADO

SURVEYED BY: DALLAS NIELSEN, C.M.	DATE: 06-30-16
DRAWN BY: K.B.	DATE DRAWN: 11-11-15
SCALE: 1" = 1000'	
WELL LOCATION PLAT	