

8-Aug-2016  
IGRF Model [1900.0-2020.0] Dip: 66.56 deg Field: 52280.9 nT  
Lat: N40 0 16.5600 Long: W104 46 43.1184 Elev: 5073.60 ft  
Magnetic North is 8.28 deg East of TRUE North  
To correct azimuth from Magnetic to TRUE add 8.28 deg

# Great Western Operating Company, LLC

Location	Colorado	Slot	S18 - Ottesen LE 06-151HC
Field	Wattenburg	Well	Ottesen LE 06-151HC
Installation	Ottesen	Wellbore	Ottesen LE 06-151HC (PWB)

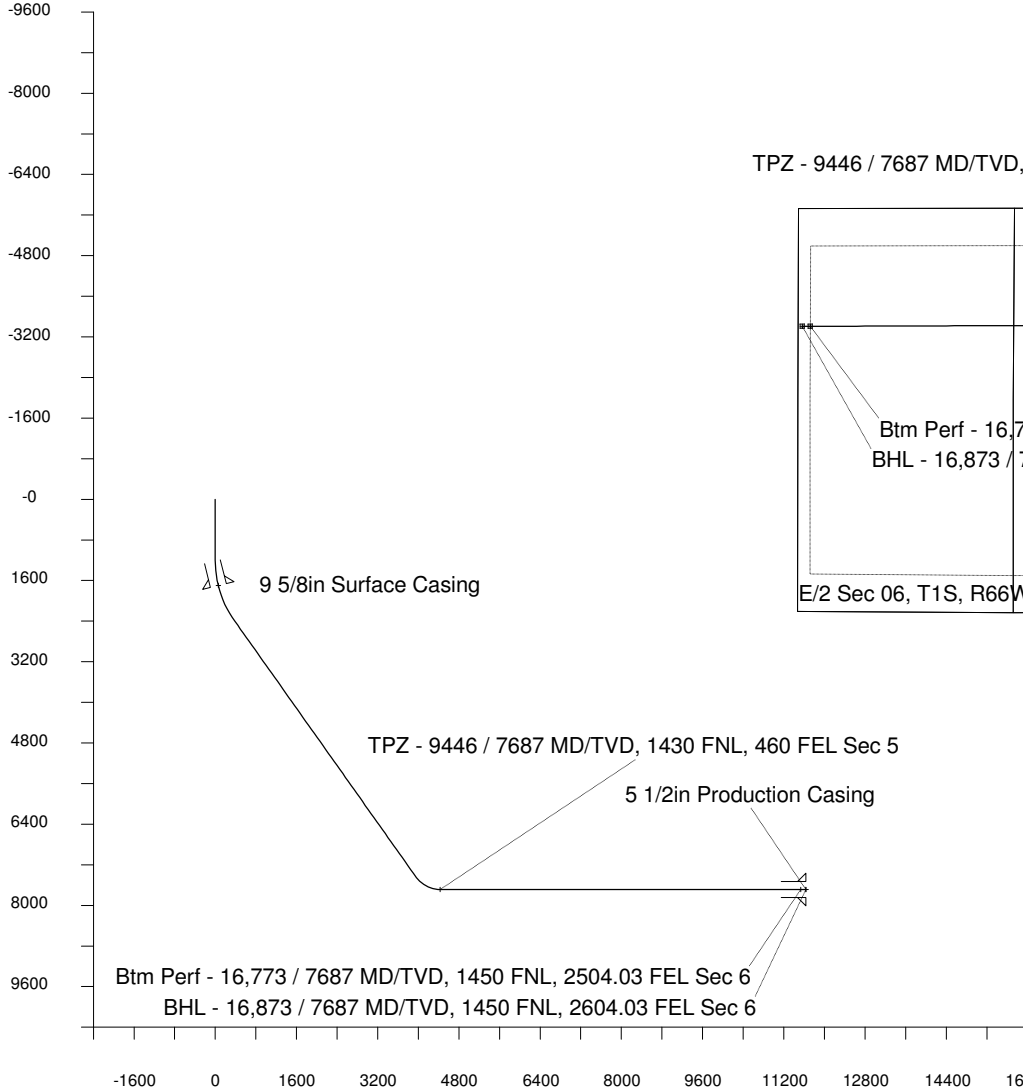
Created by	admin
Date plotted	28-Dec-2017
Plot reference is Ottesen LE 06-151HC (PWB).	
Ref wellpath is Ottesen LE 06-151HC (PWP#1).	
Coordinates are in Feet reference S18 - Ottesen LE 06-151HC.	
True Vertical Depths are reference Rig Datum.	
Measured Depths are reference Rig Datum.	
Rig Datum: Planned Datum #1	
Rig Datum to Mean Sea Level: 5093.60 ft.	
Plot North is aligned to TRUE North.	

Scale 1 cm = 500 ft

East (Feet) ->

-15000 -14000 -13000 -12000 -11000 -10000 -9000 -8000 -7000 -6000 -5000 -4000 -3000 -2000 -1000 0 1000 2000

Scale 1 cm = 800 ft  
True Vertical Depth (Feet)



Scale 1 cm = 800 ft

Vertical Section (Feet) ->

Azimuth 255.72 with reference 0.00 N, 0.00 E from S18 - Ottesen LE 06-151HC

<- North(Feet)

Scale 1 cm = 500 ft

## WELL PROFILE DATA

Point	MD	Inc	Azi	TVD	North	East	deg/100ft	V. Sect
Tie on	0.00	0.00	0.00	0.00	S 0.00	W 0.00		-0.00
KOP	1200.00	0.00	231.20	1200.00	S 0.00	W 0.00	0.00	-0.00
End of Build	2463.19	37.90	231.20	2373.08	S 252.36	W 313.86	9.84	366.41
End of Hold	8888.31	37.90	231.20	7443.35	S 2725.27	W 3389.46	0.00	3957.02
Target TPZ - ... Sec 5	9445.73	90.00	269.81	7687.00	S 2845.15	W 3846.00	36.09	4429.03
Target Btm Pe... Sec 6	16773.00	90.00	269.81	7687.00	S 2869.89	W 11173.23	0.00	11535.89
End of Turn	16775.01	90.00	270.03	7687.00	S 2869.89	W 11175.24	36.09	11537.84
T.D. & Target BHL...c 6	16873.02	90.00	270.03	7687.00	S 2869.85	W 11273.25	0.00	11632.81