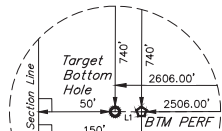


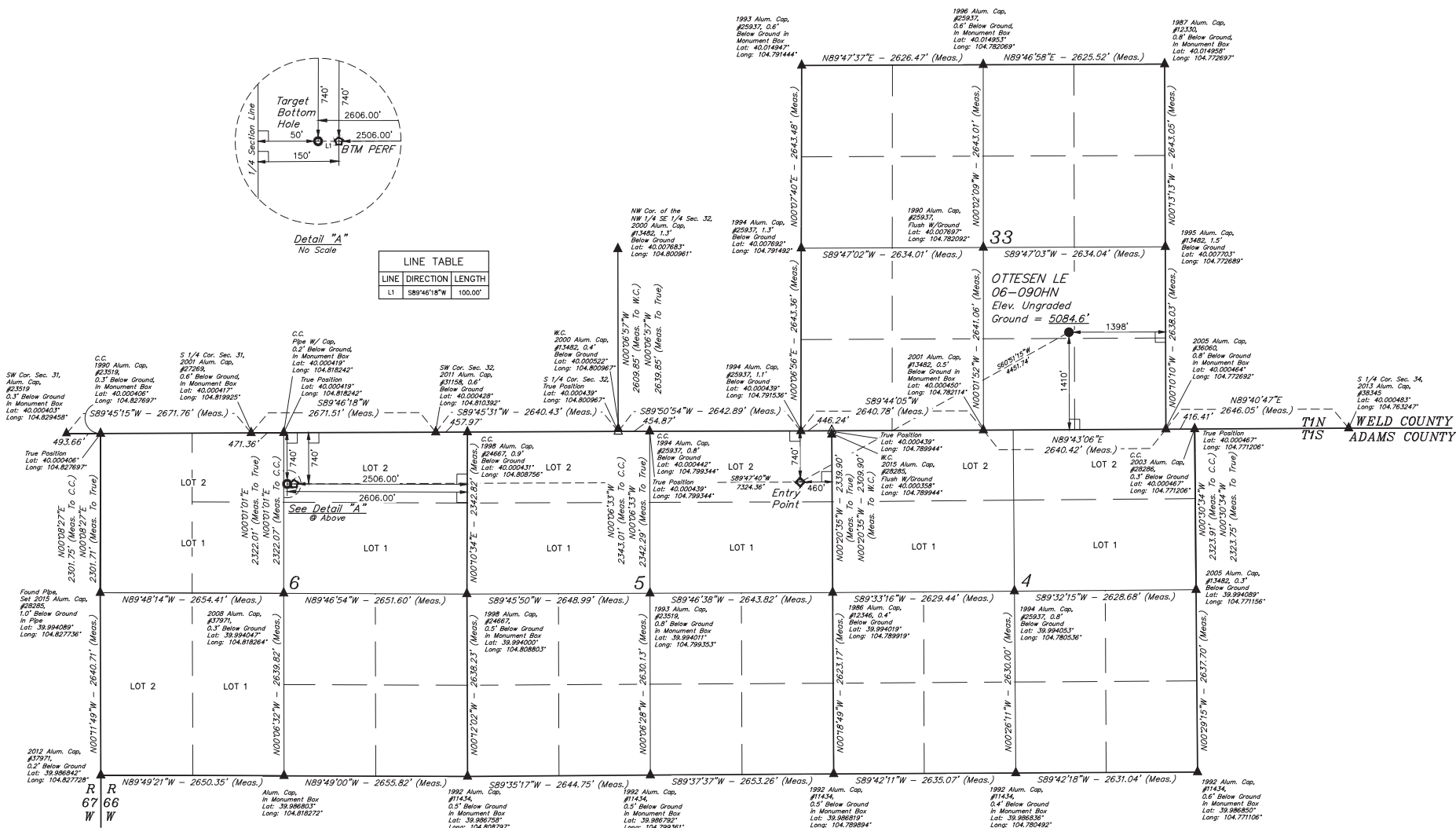
## LEGEND:

- 90° SYMBOL  
 ● PROPOSED WELLHEAD  
 ○ ENTRY POINT  
 ○ BTM PERF  
 ○ TARGET BOTTOM HOLE  
 ○ SECTION CORNERS LOCATED (NAD 83)  
 △ SECTION CORNERS RE-ESTABLISHED (Not Set on Ground) (NAD 83)



Detail "A"  
No Scale

LINE TABLE		
LINE	DIRECTION	LENGTH
L1	S89°46'18"W	100.00'



PDOP = 1.4

NAD 83 (SURFACE LOCATION)	NAD 83 (ENTRY POINT)	NAD 83 (BTM PERF)	NAD 83 (TARGET BOTTOM HOLE)
LATITUDE = 40°00'15.5" (40.004325)	LATITUDE = 39°59'54.25" (39.998408)	LATITUDE = 39°59'54.20" (39.998389)	LATITUDE = 39°59'54.20" (39.998389)
LONGITUDE = 104°46'39.65" (104.777681)	LONGITUDE = 104°47'29.68" (104.791578)	LONGITUDE = 104°47'29.77" (104.817714)	LONGITUDE = 104°49'05.05" (104.818071)
NAD 27 (SURFACE LOCATION)	NAD 27 (ENTRY POINT)	NAD 27 (BTM PERF)	NAD 27 (TARGET BOTTOM HOLE)
LATITUDE = 40°00'15.63" (40.004342)	LATITUDE = 39°59'54.35" (39.998422)	LATITUDE = 39°59'54.26" (39.998405)	LATITUDE = 39°59'54.26" (39.998405)
LONGITUDE = 104°46'37.75" (104.777153)	LONGITUDE = 104°47'27.78" (104.791050)	LONGITUDE = 104°49'01.87" (104.817180)	LONGITUDE = 104°49'05.15" (104.817543)



BASIS OF BEARINGS IS A G.P.S. OBSERVATION  
 BASIS OF ELEVATION  
 USGS COOPERATIVE BASE NETWORK CONTROL STATION,  
 DESIGNATION "JR 53 5026", NGS DATA SHEET LISTS THE NAVD 88  
 ELEVATION AS BEING 5028 FEET.



UELS, LLC  
 Corporate Office \* 85 South 200 East  
 Vernal, UT 84078 \* (435) 789-1017



REV: 4 12-01-17 K.B. (BTM PERF ADD, NAME, EP & TBH CHANGED)

GREAT WESTERN OPERATING COMPANY  
 OTTESEN LE 06-090HN  
 NW 1/4 SEC 14, SECTION 33, T1N, R66W, 6th P.M.  
 WELD COUNTY, COLORADO

SURVEYED BY: DALLAS NIELSEN, C.M.	DATE: 06-30-16
DRAWN BY: K.B.	DATE DRAWN: 11-11-15
SCALE: 1" = 1000'	
WELL LOCATION PLAT	