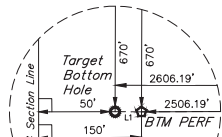


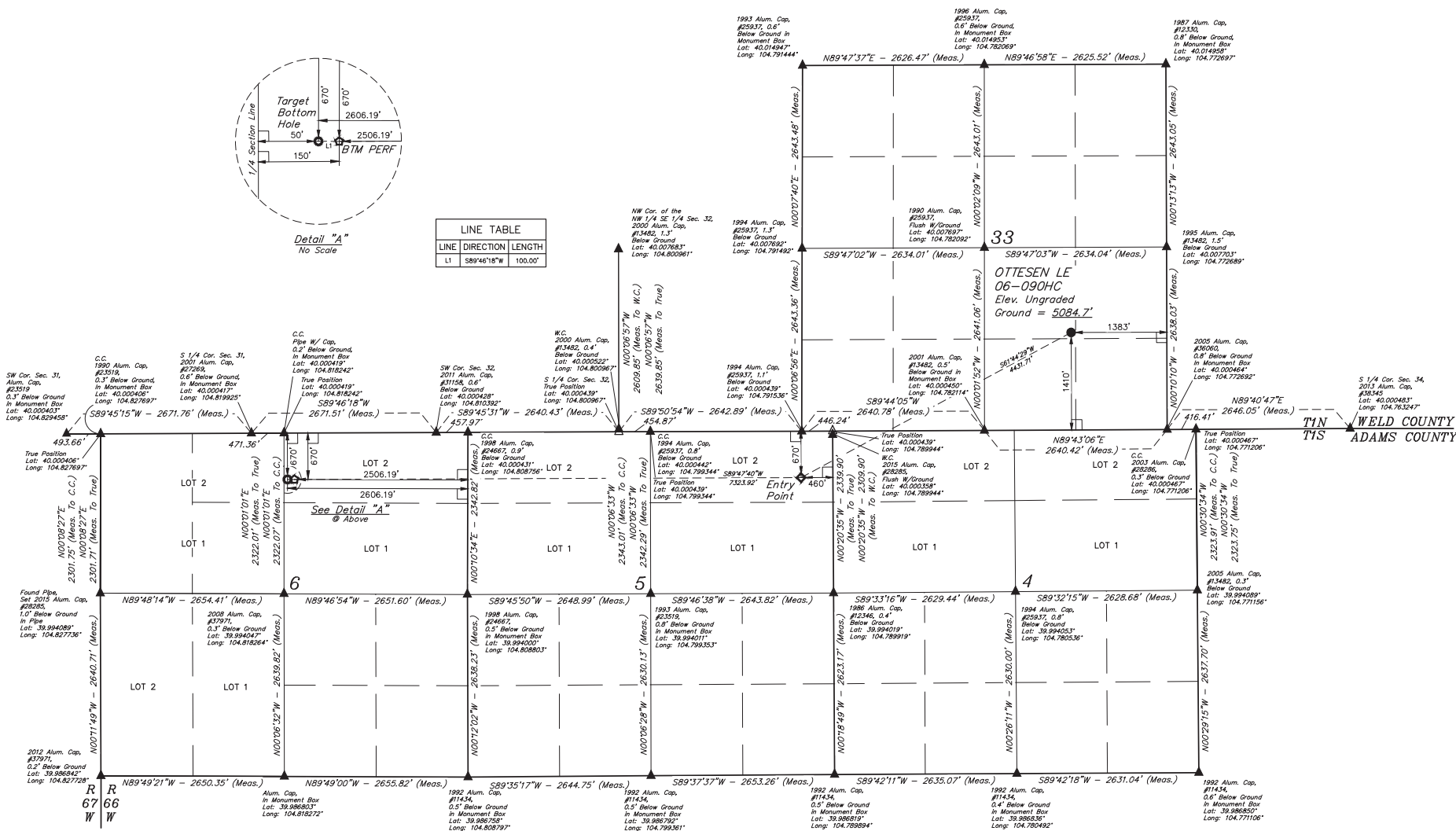
LEGEND:

- 90° SYMBOL
- PROPOSED WELLHEAD
- ENTRY POINT
- BTM PERF
- TARGET BOTTOM HOLE
- SECTION CORNERS LOCATED (NAD 83)
- △ SECTION CORNERS RE-ESTABLISHED (Not Set on Ground) (NAD 83)



Detail "A"
No Scale

| LINE TABLE | | |
|------------|-------------|---------|
| LINE | DIRECTION | LENGTH |
| L1 | S89°46'18"W | 100.00' |



PDOP = 1.4

| NAD 83 (SURFACE LOCATION) | NAD 83 (ENTRY POINT) | NAD 83 (BTM PERF) | NAD 83 (TARGET BOTTOM HOLE) |
|--|--|--|--|
| LATITUDE = 40°06'15.5" (044.004325) | LATITUDE = 39°59'53.94" (039.998600) | LATITUDE = 39°59'54.89" (039.998581) | LATITUDE = 39°59'54.48" (039.998588) |
| LONGITUDE = 104°46'39.46" (104.77628) | LONGITUDE = 104°46'29.68" (104.79158) | LONGITUDE = 104°46'03.77" (104.817713) | LONGITUDE = 104°46'05.05" (104.818070) |
| NAD 27 (SURFACE LOCATION) | NAD 27 (ENTRY POINT) | NAD 27 (BTM PERF) | NAD 27 (TARGET BOTTOM HOLE) |
| LATITUDE = 40°06'15.5" (044.004325) | LATITUDE = 39°59'53.92" (039.998617) | LATITUDE = 39°59'54.85" (039.998597) | LATITUDE = 39°59'54.43" (039.998597) |
| LONGITUDE = 104°46'37.56" (104.777100) | LONGITUDE = 104°46'27.56" (104.790163) | LONGITUDE = 104°46'01.87" (104.817185) | LONGITUDE = 104°46'03.51" (104.817542) |



BASIS OF BEARINGS
BASIS OF BEARINGS IS A G.P.S. OBSERVATION
BASIS OF ELEVATION
USGS COOPERATIVE BASE NETWORK CONTROL STATION,
DESIGNATION "JR 53 5026", NGS DATA SHEET LISTS THE NAVD 88
ELEVATION AS BEING 5028 FEET.



UELS, LLC
Corporate Office * 85 South 200 East
Vernal, UT 84078 * (435) 789-1017



REV: 4 12-01-17 K.B. (BTM PERF ADD, NAME, EP & TBH CHANGED)

GREAT WESTERN OPERATING COMPANY
OTTESSEN LE 06-090HC
NW 1/4 SEC 14, SECTION 33, T1N, R66W, 6th P.M.
WELD COUNTY, COLORADO

| | |
|-----------------------------------|----------------------|
| SURVEYED BY: DALLAS NIELSEN, C.M. | DATE: 06-30-16 |
| DRAWN BY: K.B. | DATE DRAWN: 11-11-15 |
| SCALE: 1" = 1000' | |
| WELL LOCATION PLAT | |