

LINE TABLE		
LINE	DIRECTION	LENGTH
L1	N89°W	86'
L2	S89°W	192'
L3	S85°W	333'
L4	NORTH	98'
L5	NORTH	79'

SHEET 1 OF 2

REV: 1 04-03-18 D.J.W. (PAD EXPANSION)

NOTES:



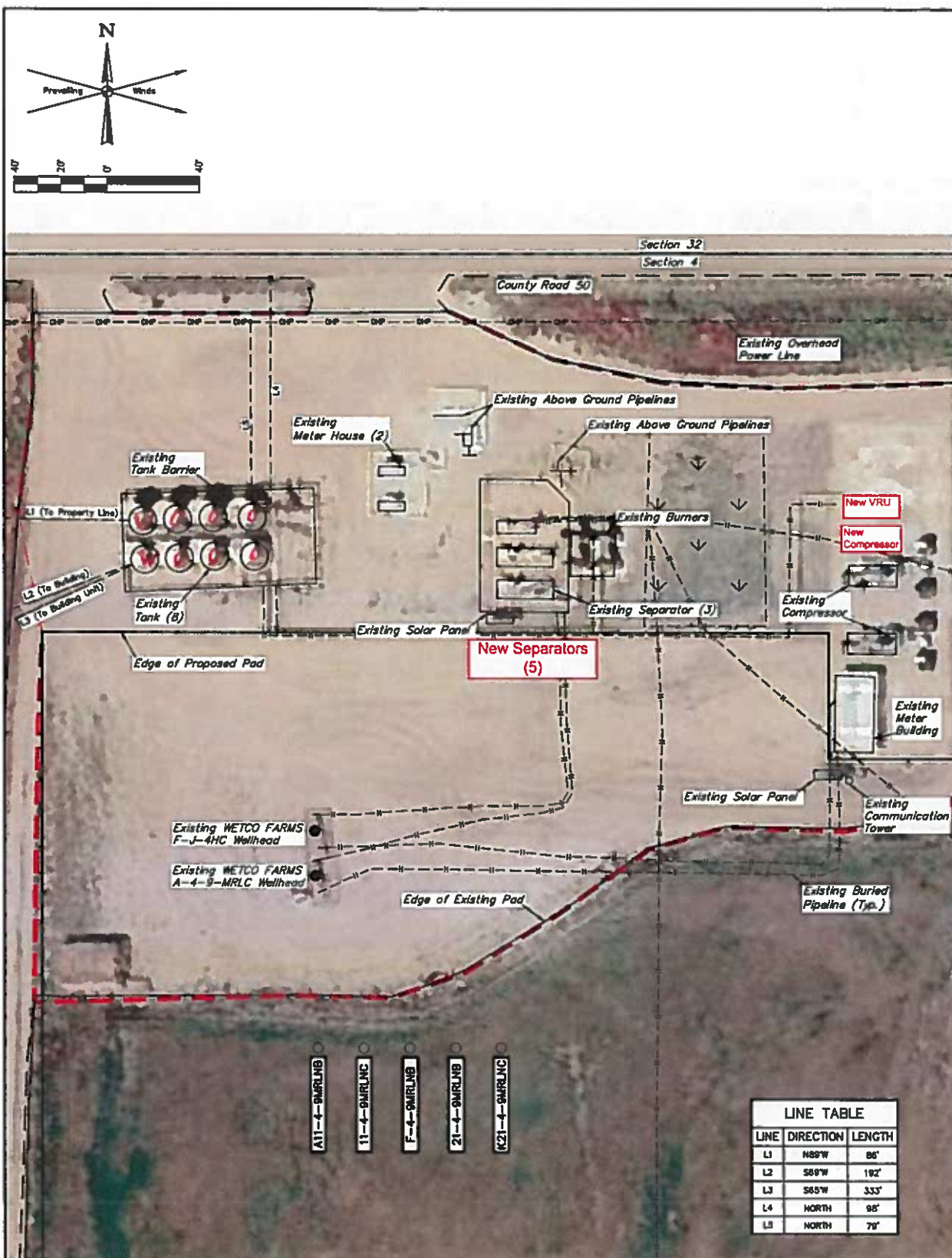
UELS, LLC  
Corporate Office • 85 South 200 East  
Vernal, UT 84078 • (435) 789-1017

**BONANZA CREEK ENERGY  
OPERATING COMPANY, LLC**

WETCO FARMS A-4 PAD  
LOT 2, SECTION 4, T4N, R63W, 6th P.M.  
WELD COUNTY, COLORADO

SURVEYED BY	DALLAS NIELSEN	03-14-18	SCALE
DRAWN BY	L.C.S.	12-21-16	1" = 300'

**FACILITY LAYOUT DRAWING**



Detail "A"

SHEET 2 OF 2

REV: 1 04-03-18 D.J.W. (WELL MOVES & ADD WELLS)

NOTES:

**BONANZA CREEK ENERGY  
OPERATING COMPANY, LLC**

WETCO FARMS A-4 PAD  
LOT 2, SECTION 4, T4N, R63W, 6th P.M.  
WELD COUNTY, COLORADO

SURVEYED BY DALLAS NIELSEN 03-14-18 SCALE  
DRAWN BY L.C.S. 12-21-16 1" = 40'

**FACILITY LAYOUT DRAWING**



**UELS, LLC**  
Corporate Office \* 85 South 200 East  
Vernal, UT 84078 \* (435) 789-1017